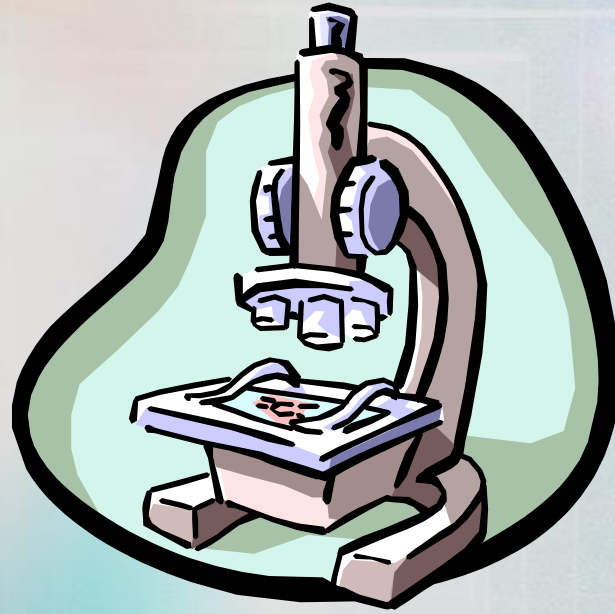


The Light Microscope



102 BOT

Lab 1

Introduction to the Microscope



- * **Care**
- * **Parts**
- * **Focusing**

Guidelines for Use

- Always carry with 2 hands ...one on the arm and the other on the base
- use lens paper for cleaning
- Clean after using immersion oil
- Never touch the lenses with your fingers.

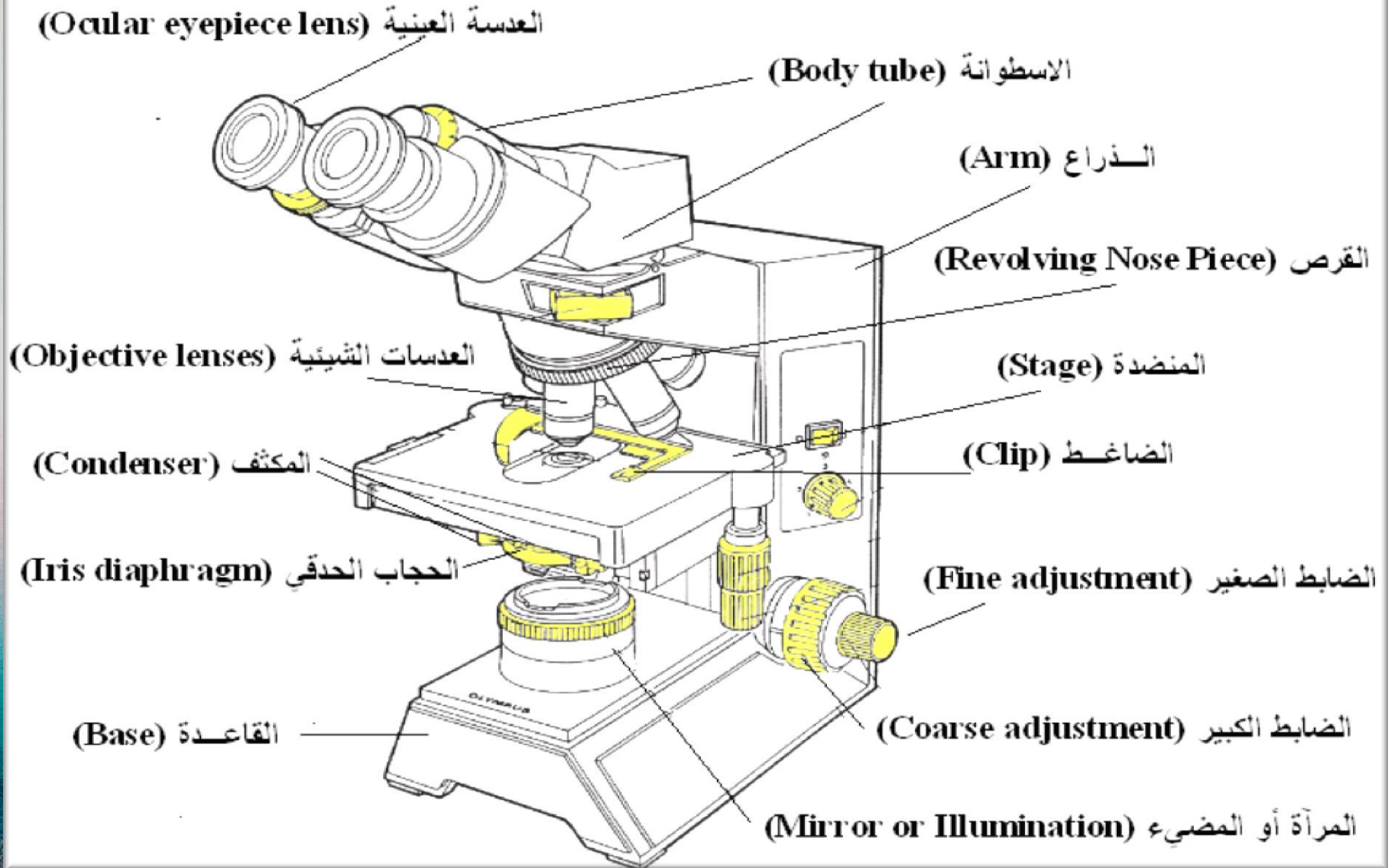


Guidelines for Use

- Do not force knobs
- Keep objects clear of desk and cords
- Always store covered
- When you are finished with your "scope", rotate the nosepiece so that it's on the low power objective, roll the stage down to lowest level, rubber band the cord, then replace the dust cover.



Parts of the Microscope



Using a Microscope

- Plug your microscope in to the outlet
- Turn light on.
- Start on the lowest magnification
- Don't use the coarse adjustment knob on high magnification...you'll break the slide!!!



Using a Microscope

- Place slide on stage and lock clips
- Adjust light source (if it's a mirror...don't stand in front of it!)
- Use fine adjustment to focus



Objective Lenses

Low Power = 4 x

Medium Power = 10 x

High Power = 40 x

Remember:

- If you are seeing perfectly round, clear circles then you just may be looking at air bubbles. Check your slide and try again.
- Microscopes must always be properly put away.
- Slides and cover-slips should be washed, dried, and returned to their proper place.



Munira A-Dosari


Thanks

for your attention!

almonerah@ksu.edu.sa