

Flower and Fruit



leaves



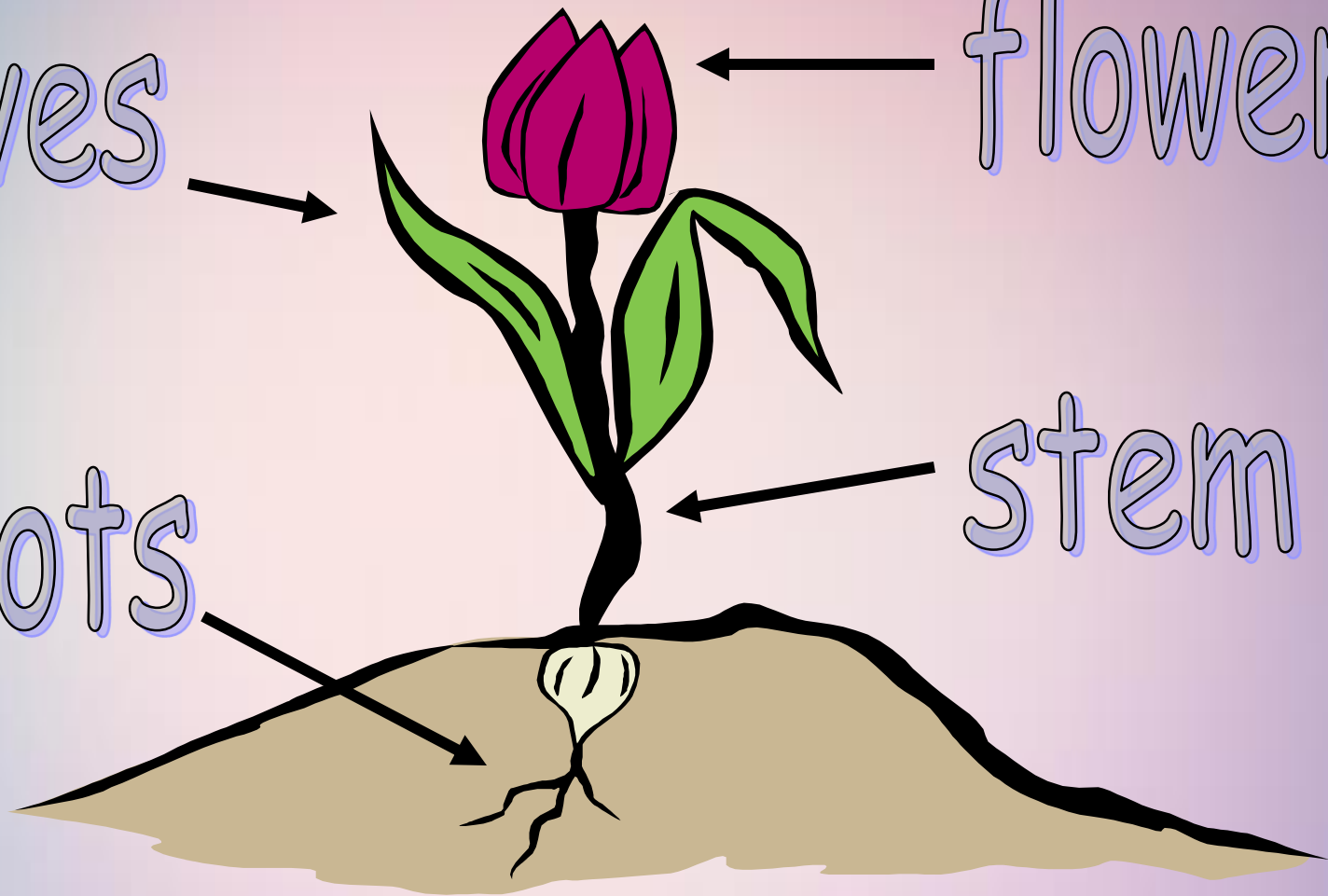
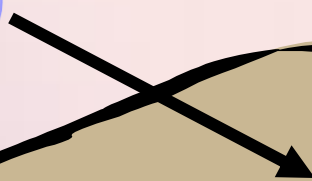
flower



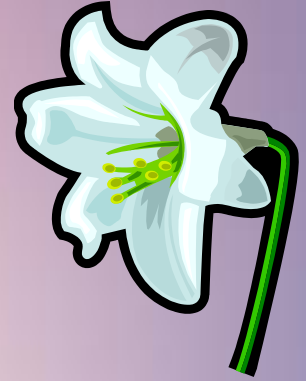
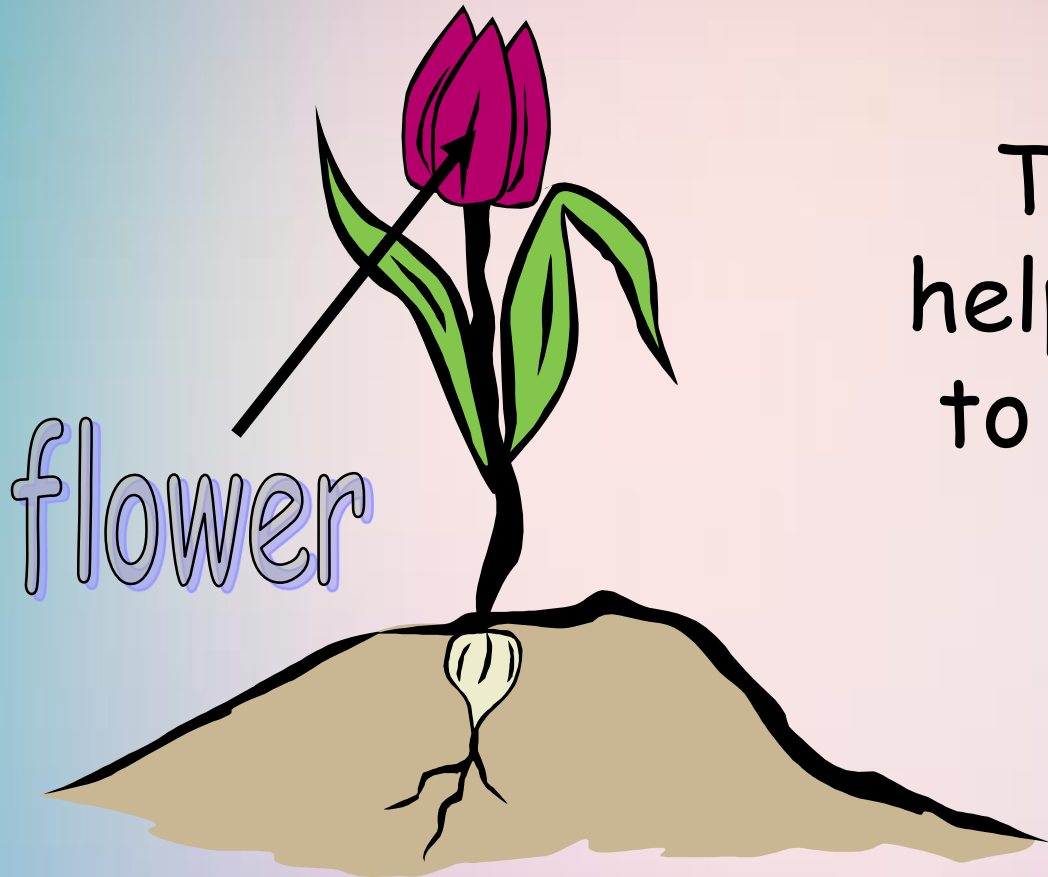
stem



roots

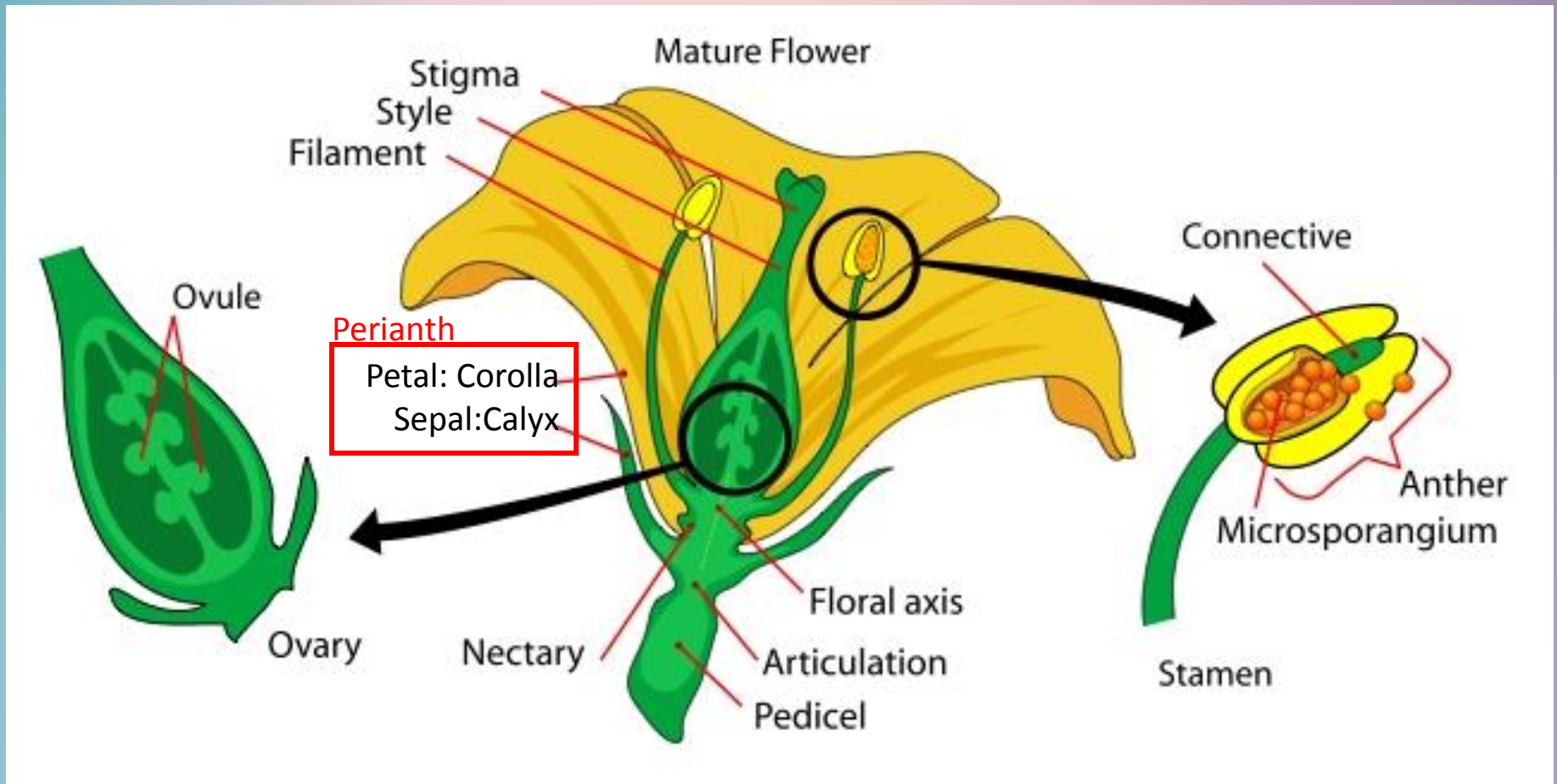


What is the function of the flower?

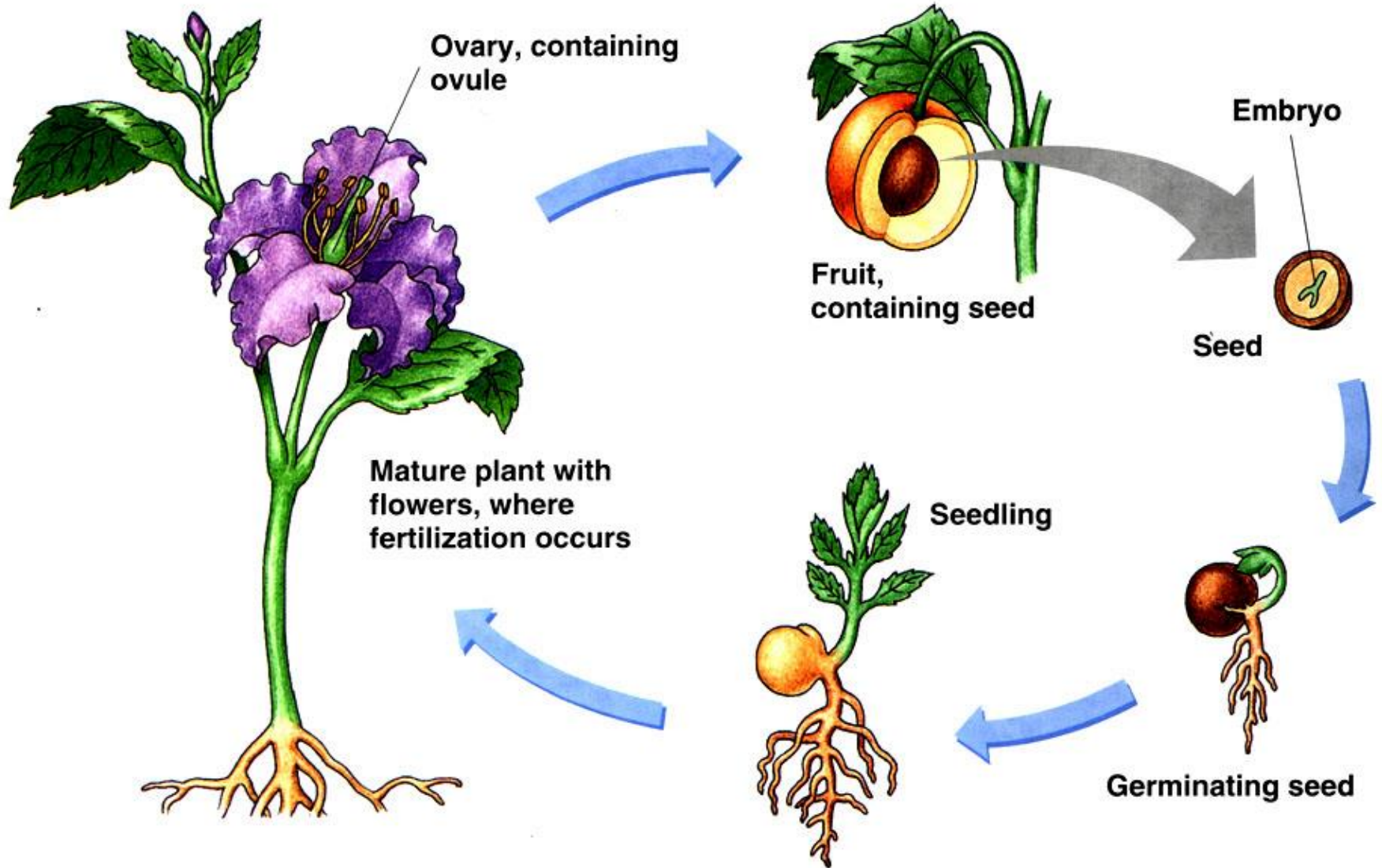


The flower
helps the plant
to reproduce.

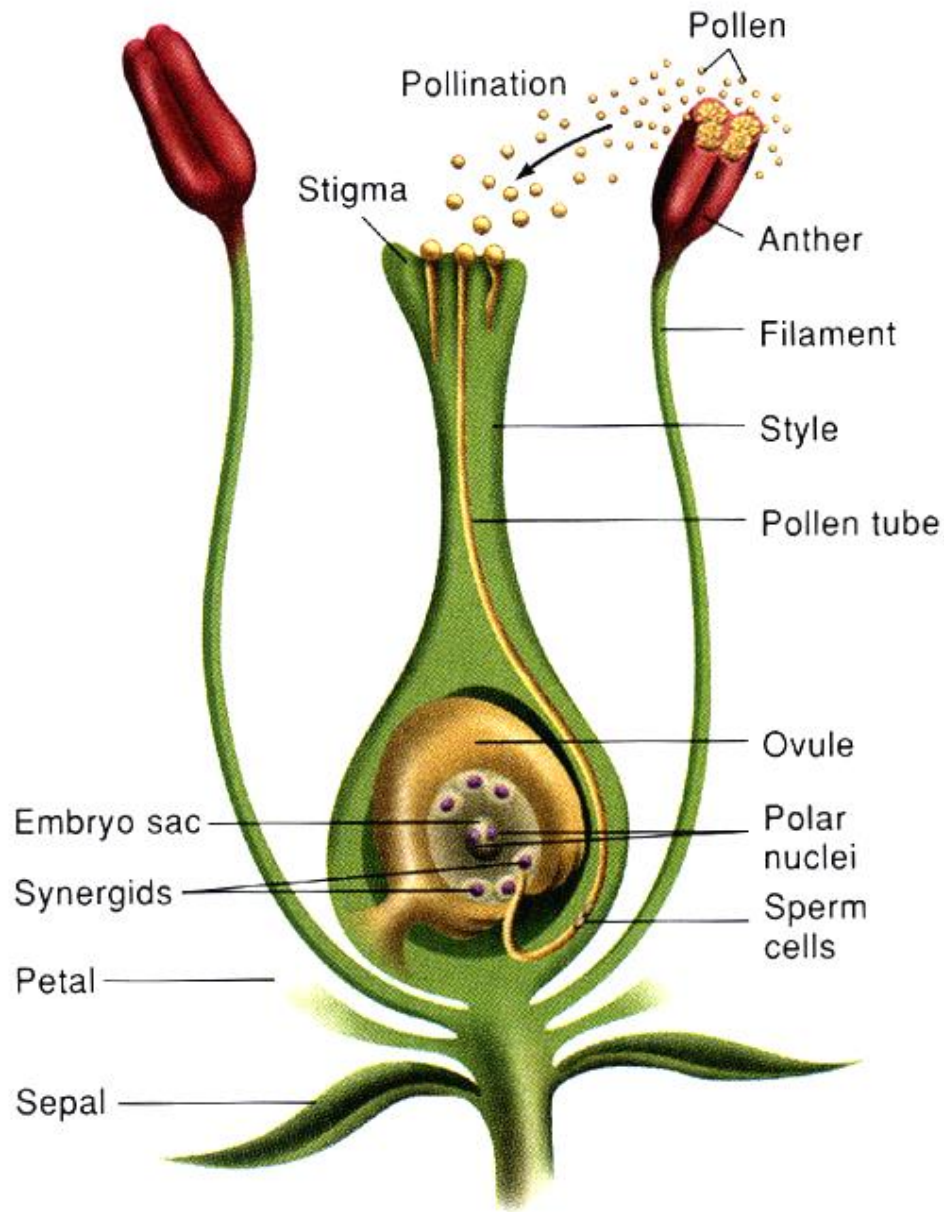
The Reproductive Structure of Flowering Plants:



Fruits



A fruit develops from the ovary wall after fertilization of the egg in the ovule



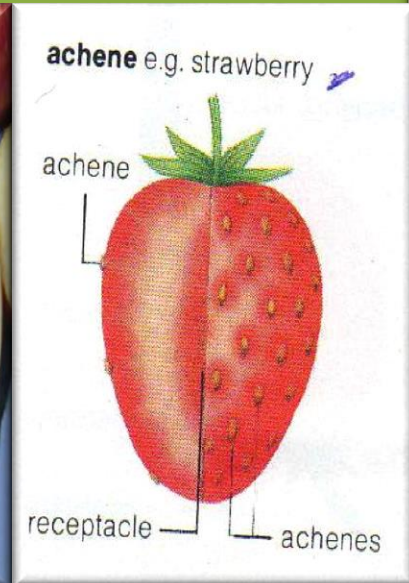
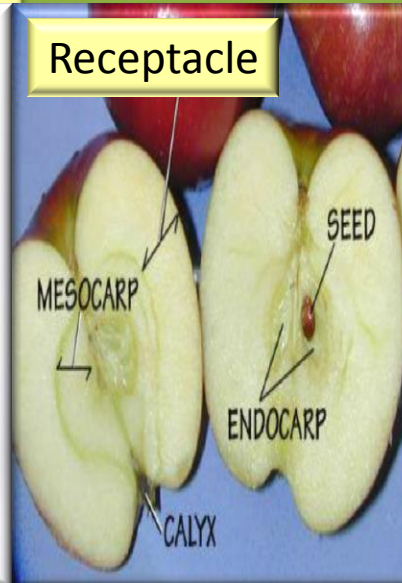
A seed develops from the ovule after fertilization of the egg in the ovule

First

Classification of fruits

A-True

B-False



Second

Classification of Fruits

Simple
(e.g. Senna pods)



Aggregate
(e.g. Star anise)



Composite
(compound, multiple)
(e.g. Figs)



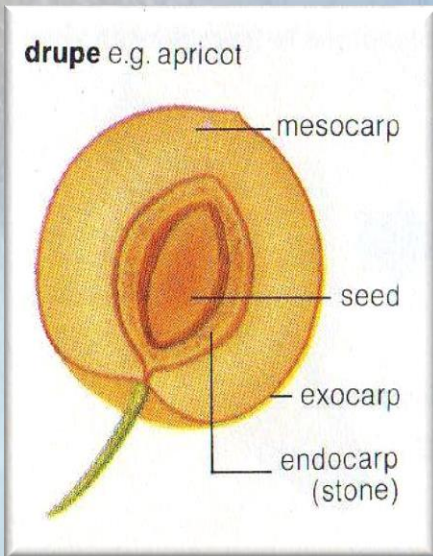
Simple Fruits الثمار البسيطة

1- Succulent (fleshy pericarp)

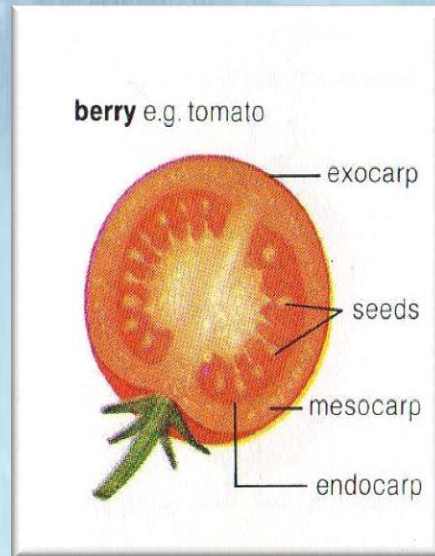
2- Dry Fruits

الثمار الغضة Succulent Fruits

حسلية
Drupe



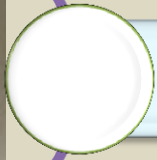
لبية
Berry



تفاحية كاذبة
Pome



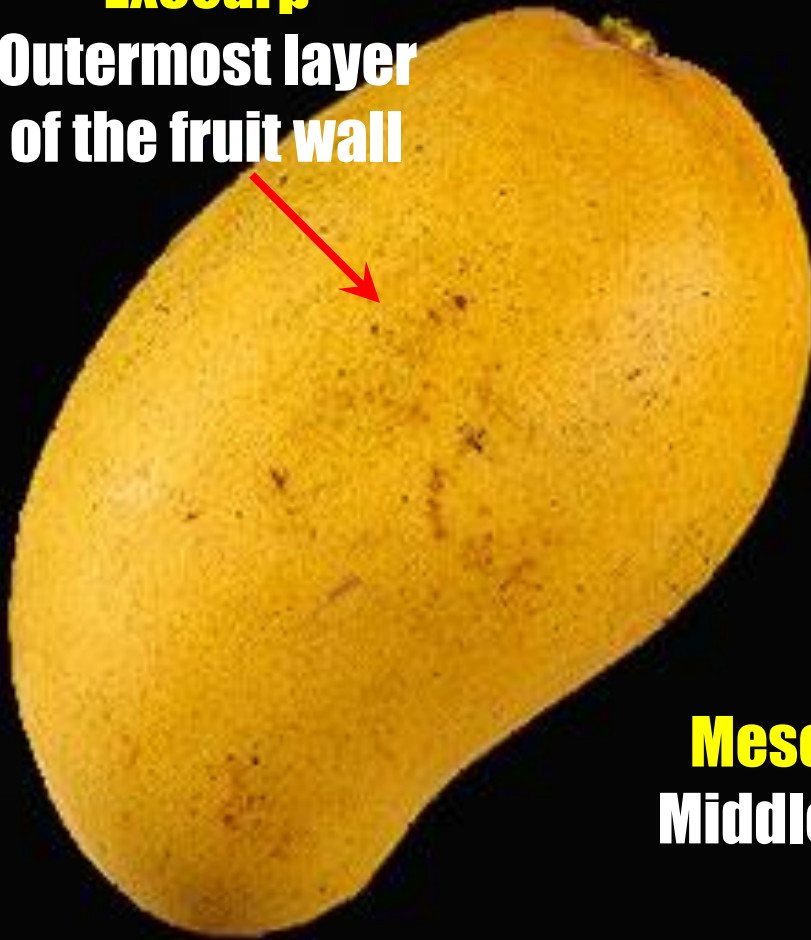
Drupe



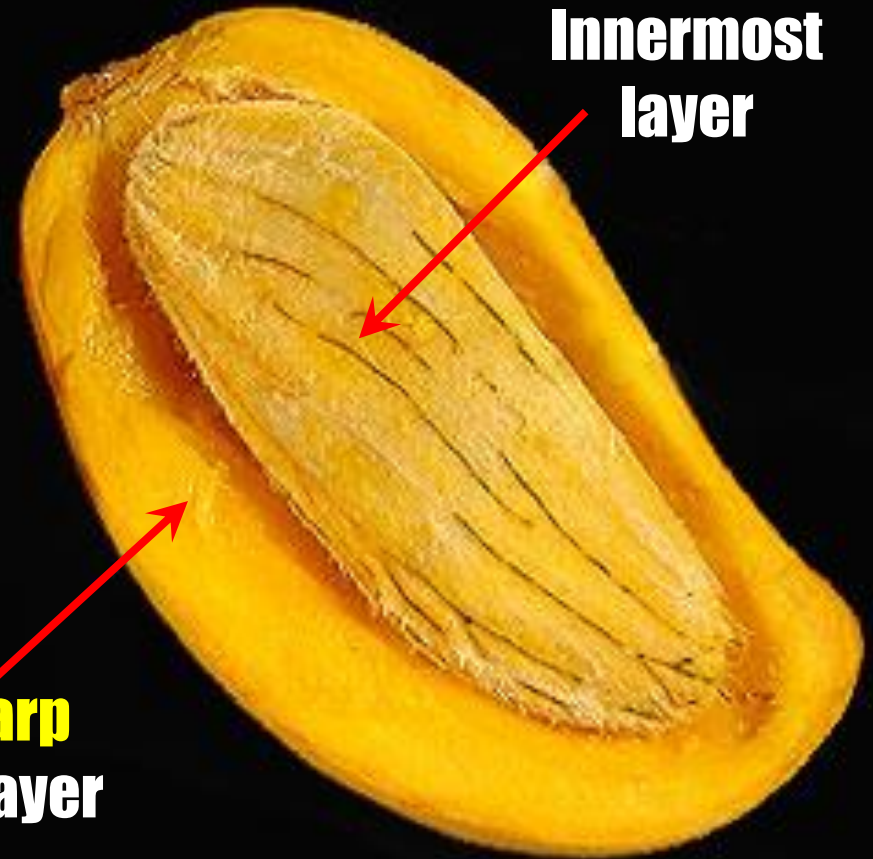
Simple Fruits

الثمار البسيطة

Exocarp
Outermost layer
of the fruit wall



Endocarp
Innermost
layer



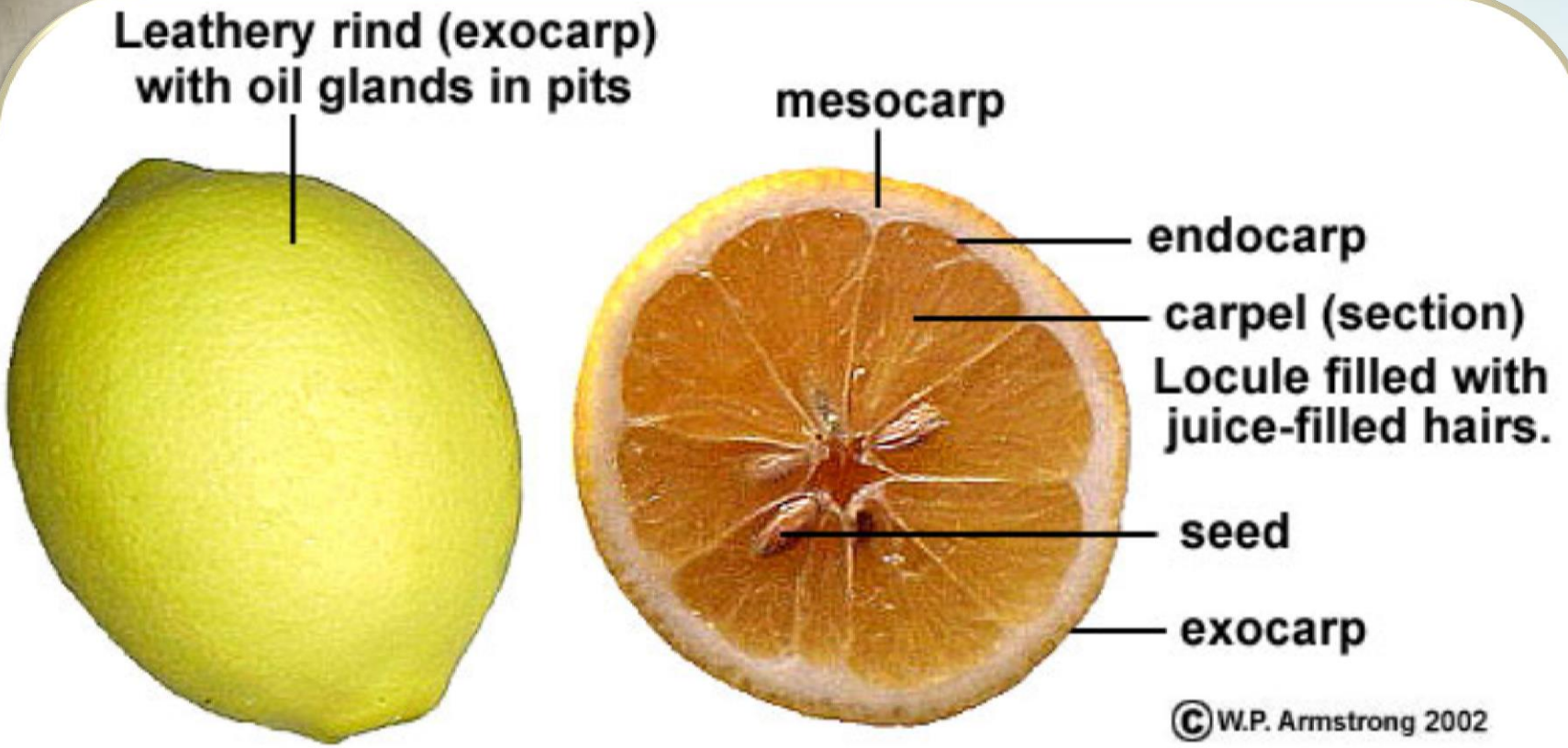
Mesocarp
Middle layer

Berry



Simple Fruits

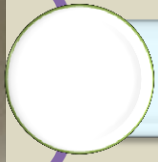
الثمار البسيطة



© W.P. Armstrong 2002

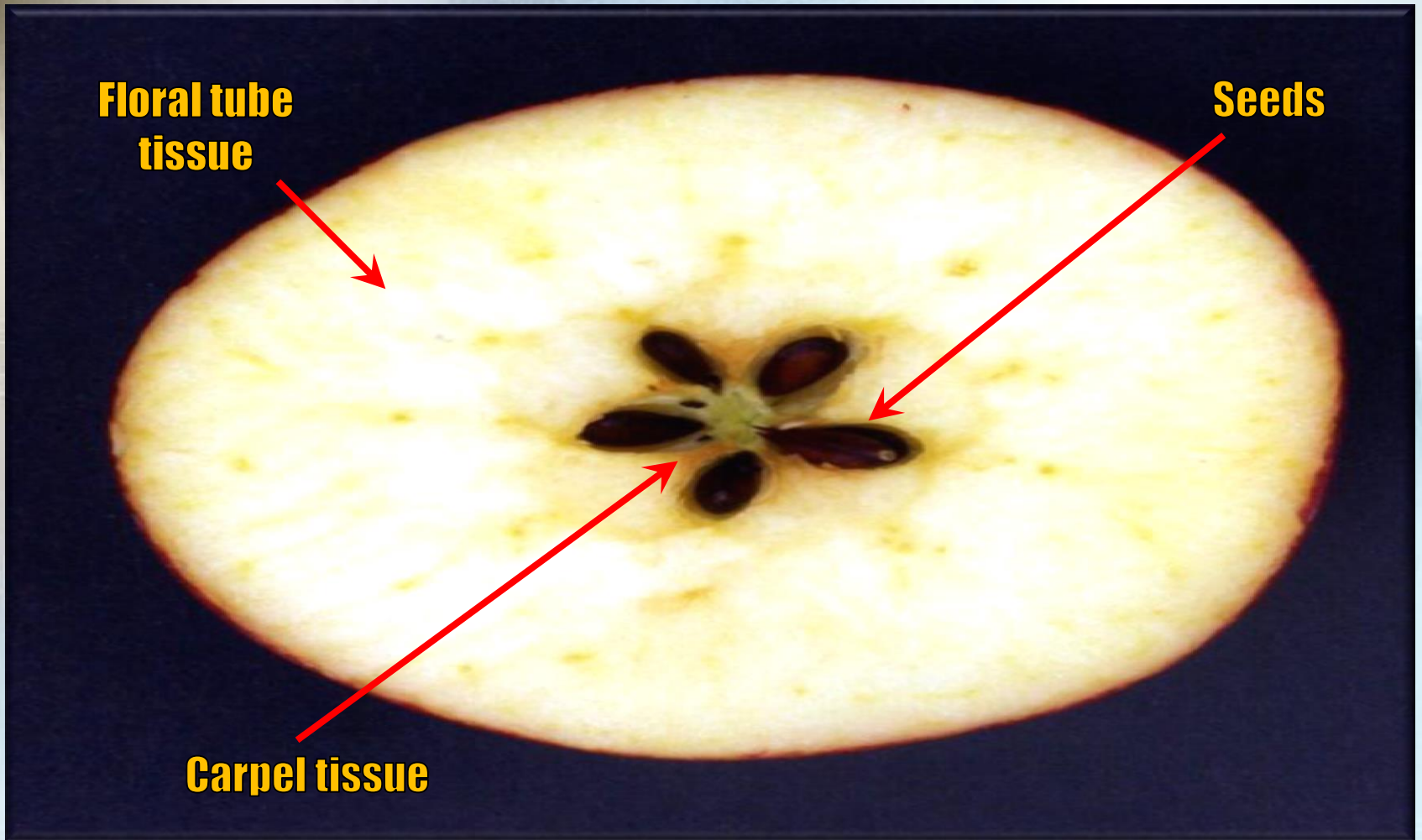
Hesperidium (berry with a leathery rind)
e.g. lemon (*Citrus lemon*)

Pome



Simple Fruits

الثمار البسيطة



Dry Fruits الثمار الجافة

جافة متفتحة
Dehiscent

جافة غير متفتحة
Indehiscent

منشقة
Schizocarpic

I-Dehiscent Fruits

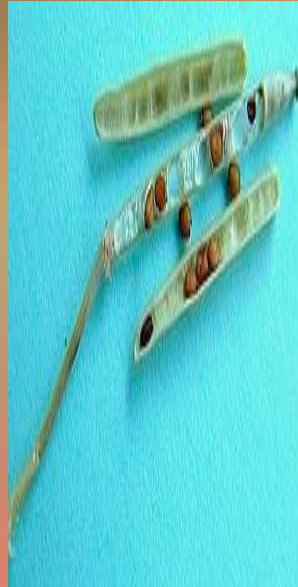
جرابية
Follicle



قرنية
Legume



خردلة
Siliqua



خريدلة
silicula



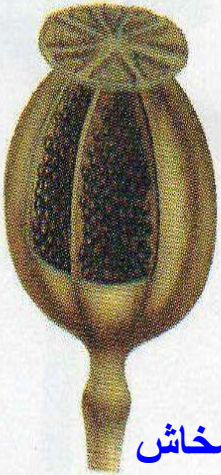
Capsule علبة



Capsule علبة

Porous ثقوب

capsule e.g. poppy



خشخاش

teeth اسنان



قرنفل

Lid غطاء



عين القط

Valves صمامات

مسكني

حاجزي

مصراعي



II-Indehiscent Fruits

غير متفتحة

فقيرة

Achene

بيرة

Caryopsis

سبسلا

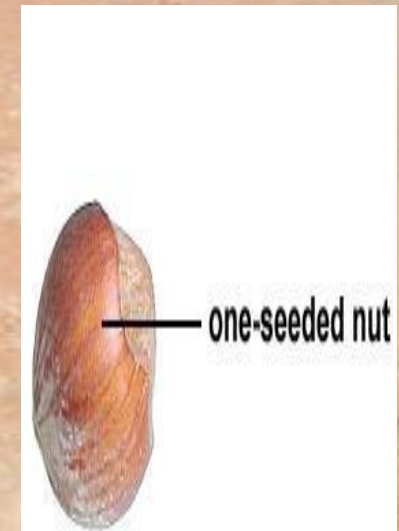
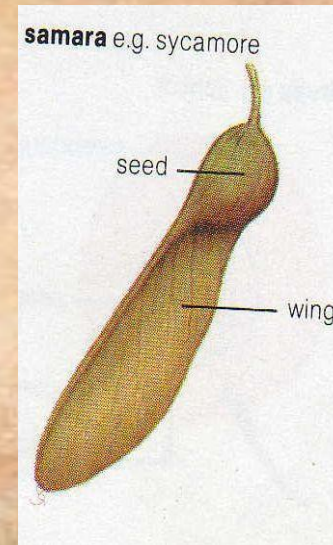
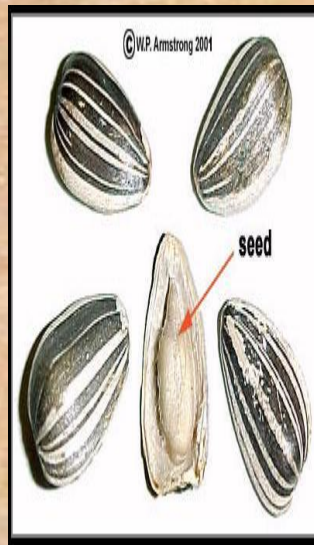
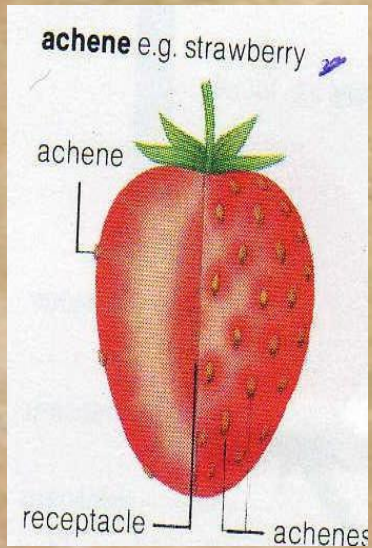
Cypsella

جناحية

Samara

بندقية

Nut



III-Schizocarpic Fruits

منشقة



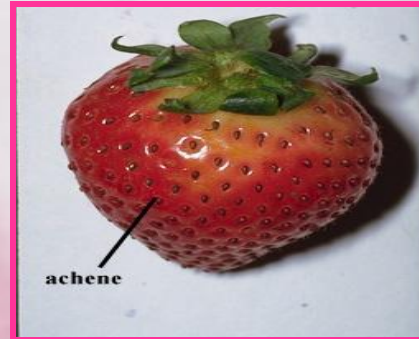
خبيزة

الثمار المتجمعة

Aggregate Fruits

Achenes

strawberry



Follicles

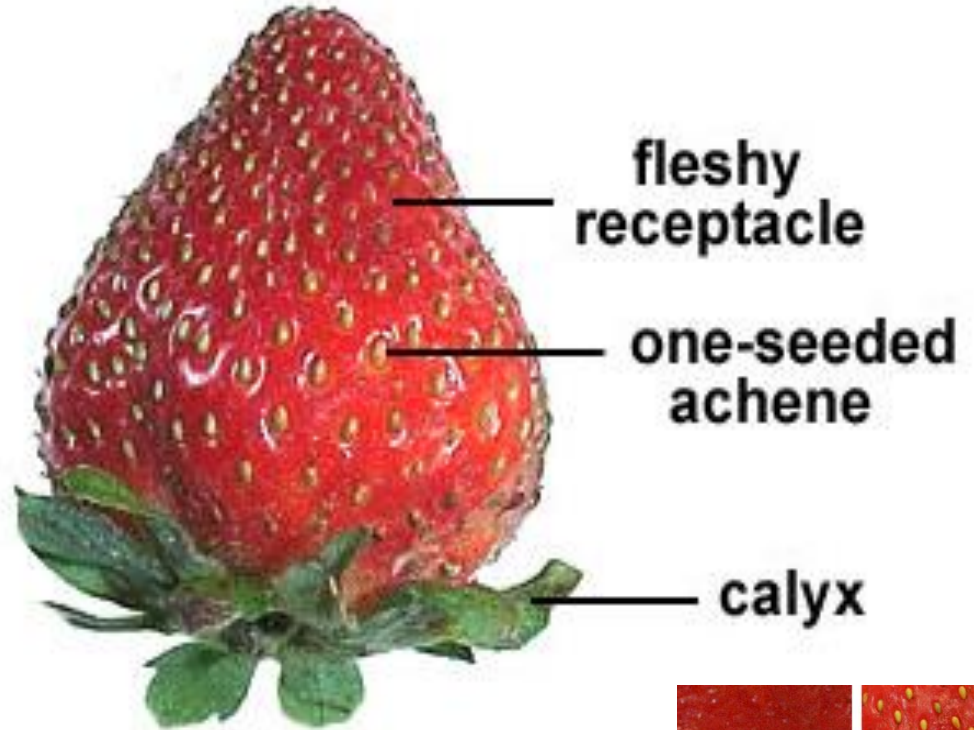


Compound-Aggregate

Many ovaries derived from a single flower



Strawberry Flower



Aggregate Fruit
Many one-seeded achenes
produced by a single flower.

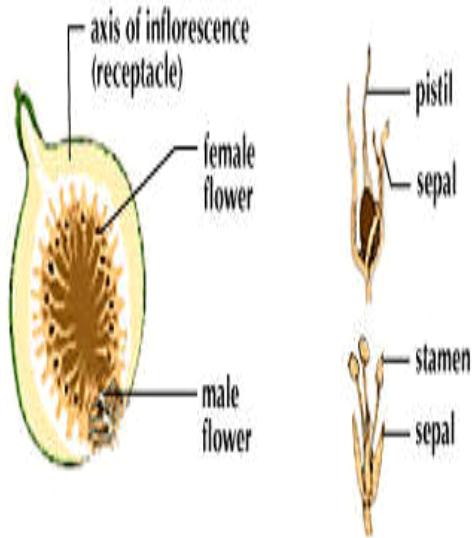


Strawberry (*Fragaria sp.*)

Composite Fruits (Compound, Collective or Multiple)

ثمار مركبة تينية

Multiple (Compound) Fruit
(fig)

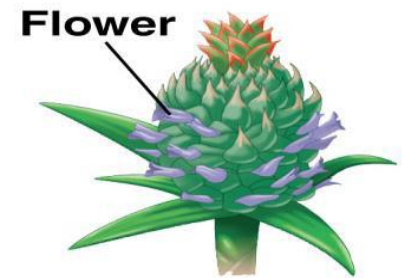


ثمار مركبة توتية



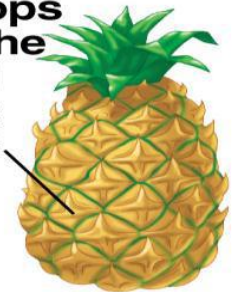
Multiple Fruit (Many Drupelets):
Each seed-bearing drupelet from
the ovary of one pistillate flower.
k Mulberry (*Morus nigra*)

ثمار الأناناس



Pineapple
inflorescence

Each segment
develops
from the
carpel
of one
flower



Pineapple fruit

(c) Multiple fruit

Multiple Fruit

© W.P. Armstrong 2002



Numerous Female Flowers:
Each composed of an individual monocarpous pistil (gynoecium).



Multiple Fruit (Many Drupelets):
Each seed-bearing drupelet from the ovary of one pistillate flower.

Multiple Fruit of the Black Mulberry (*Morus nigra*)

Multiple Fruit

Mulberry (Morus)



Raspberry



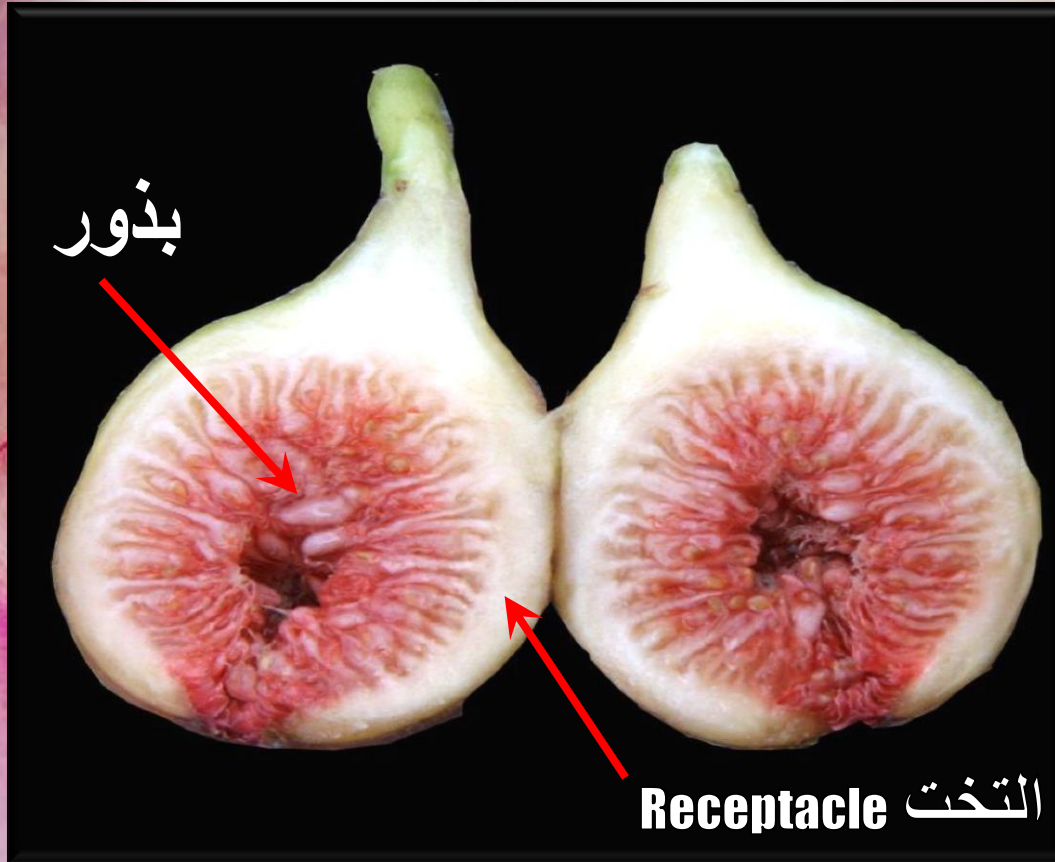
Compound-Multiple/Collective

From several ovaries of several flowers of a compact inflorescence



Pineapple (*Ananas comosus*)

Multiple Fruit



Syconium

Munirah Al-Dosari

Mama
BABYFLOSS.COM



تَعْرِ بِحَمْدِ اللَّهِ

You R Bright



myhotcomments.com

Good Luck on
your exam!!