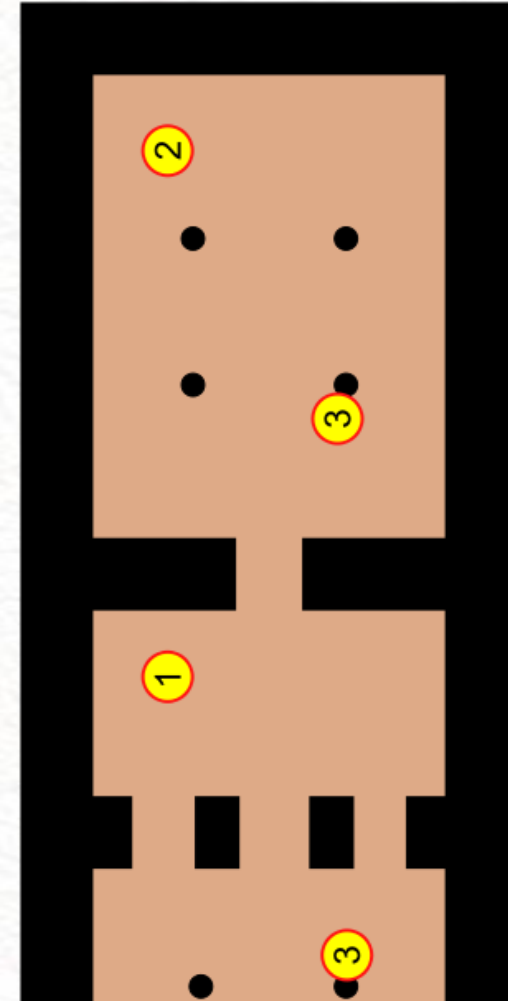
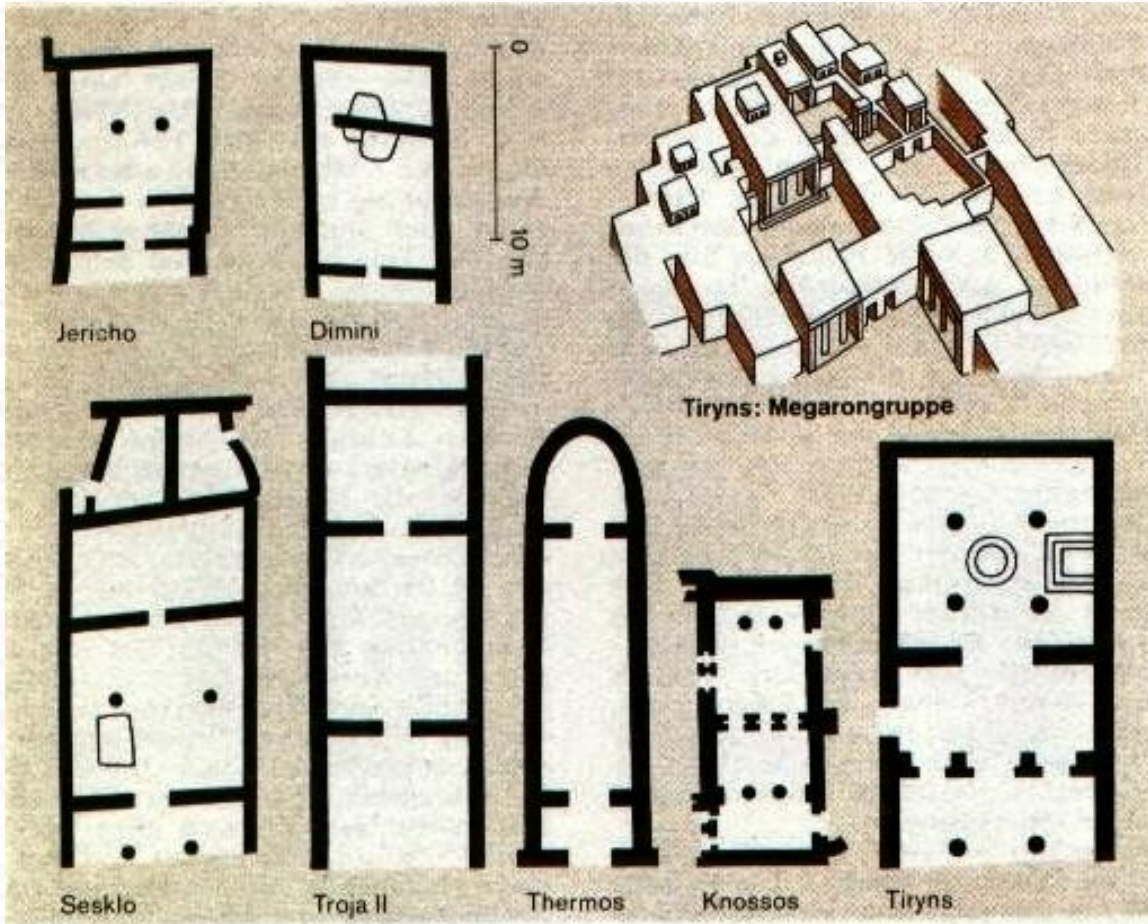
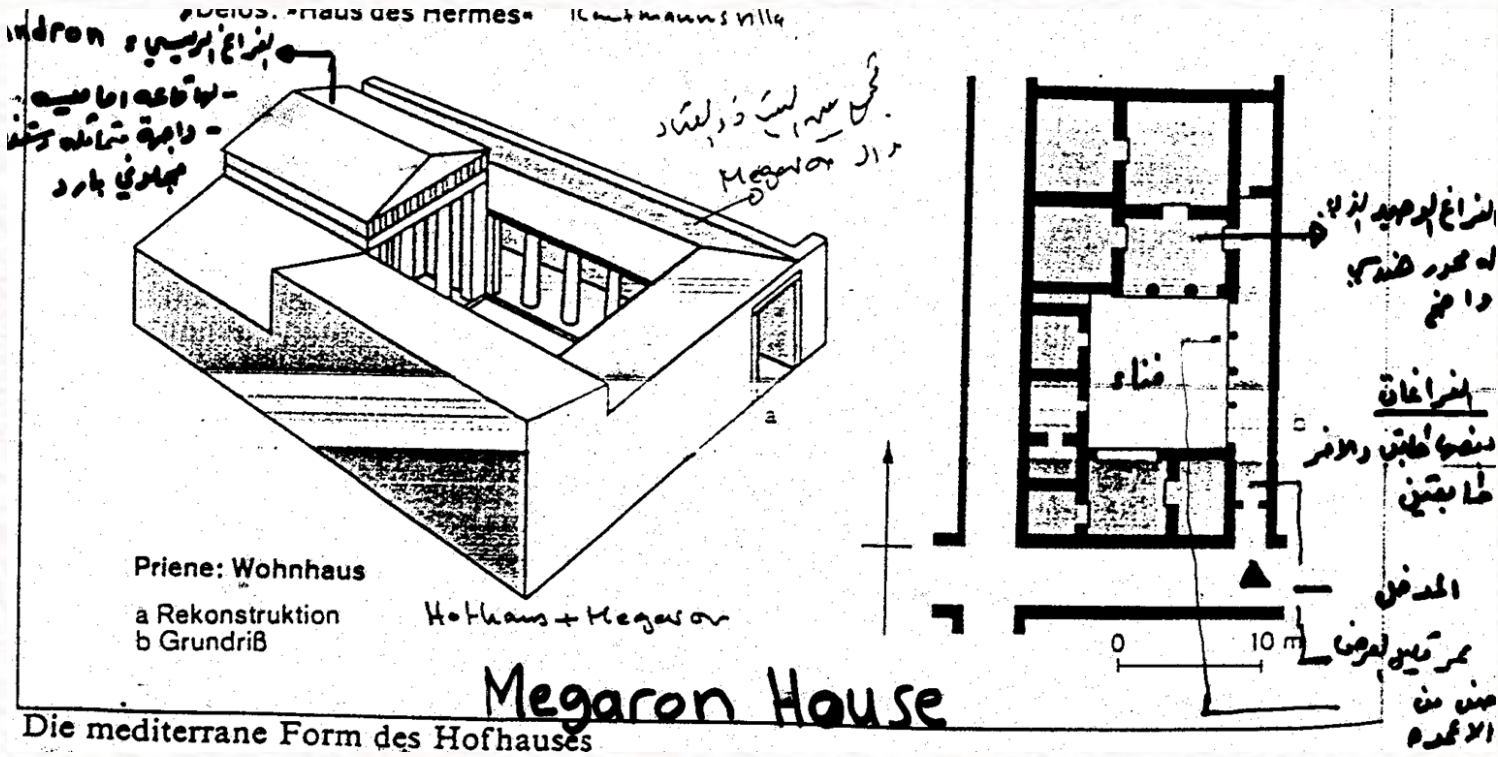


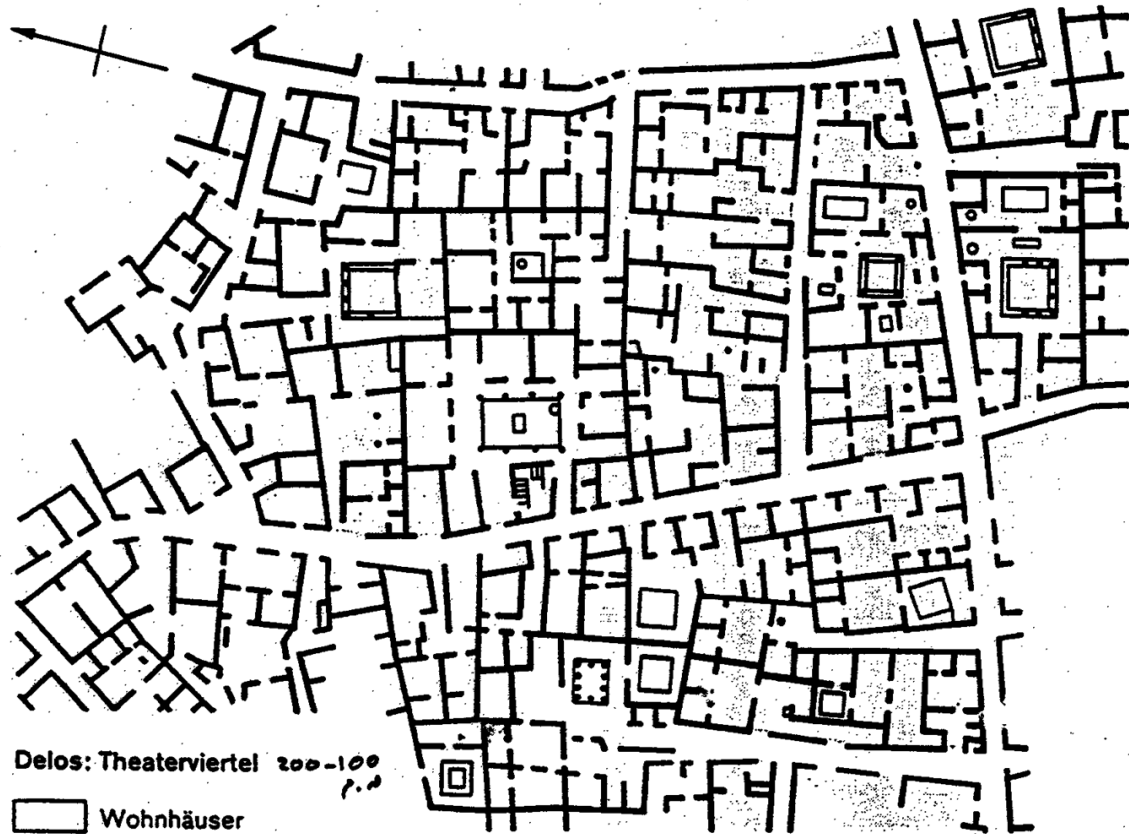
العمارة الانغريقية والايطالية في العصور القديمة

الاحياء والمباني السكنية في
بلاد الاندلس وايطاليا في
العصور القديمة

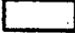



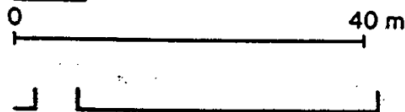


Peristyl-Haus



Delos: Theaterviertel 200-100
P.M.

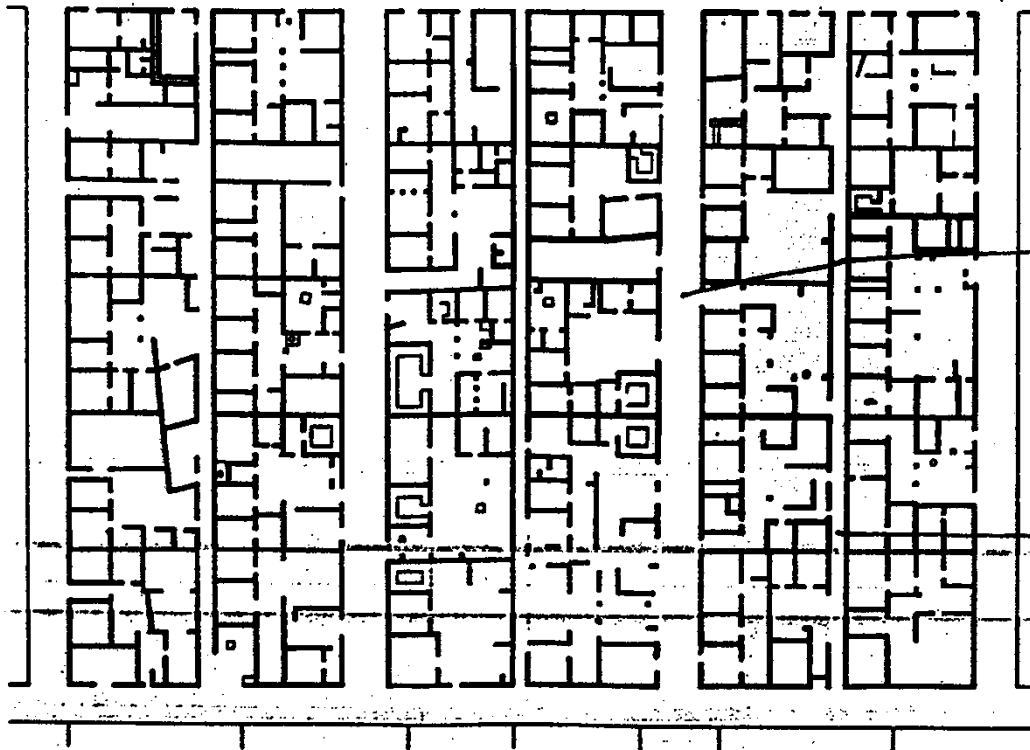
-  Wohnhäuser
-  Straßen und Plätze



- Verschachtelung, wie auf
 - unregelmäßige Laubstrassen mit verschiedenen Größen
 - Straßenbreite 1,5 - 2,6 m
 - Parkalleen

Straßen und Plätze
0 40 m

Verschachtelung, wie in
unregelmäßige Parzellen mit verschiedenen
Straßenbreiten 1.5 - 2.6 m
Hauptstr. - 0.4 m



Olynth: insulae der Neustadt 440 - 430 v. chr.

Pastas (Halle)-Haus

Hauptstr. - 0.4 m
- 7 m breit
- Abstand zwischen
2 Hauptstr.
(85.5 m)

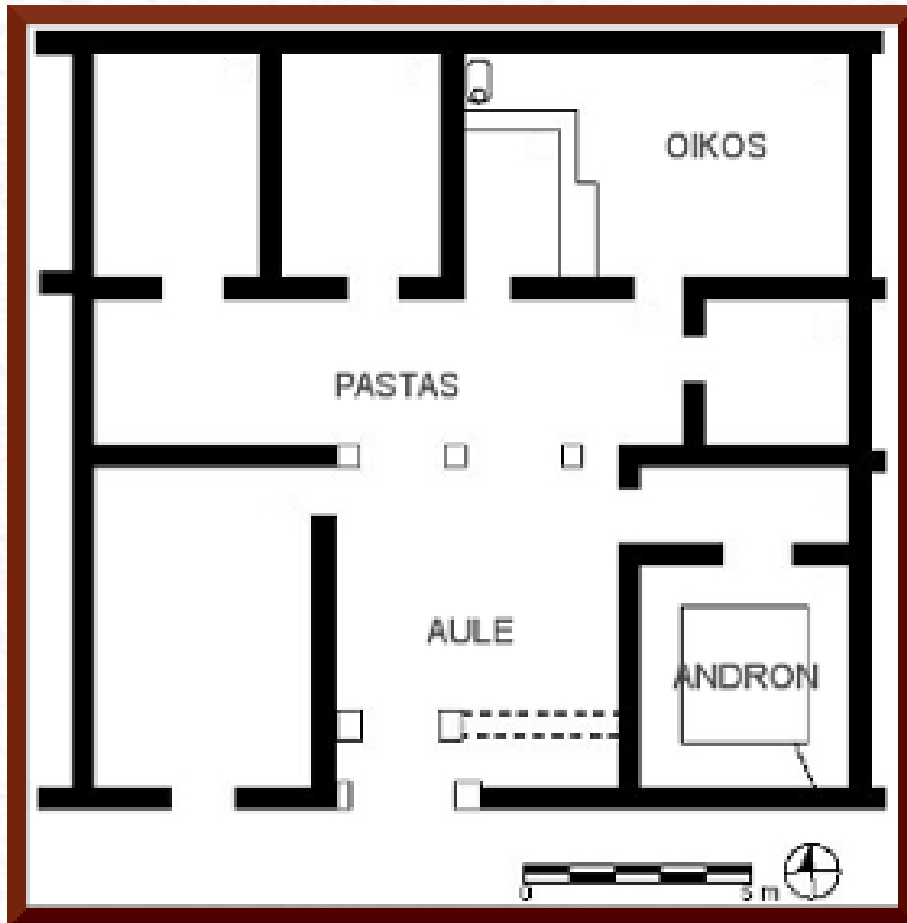
Nebenstr.
- 3.5 m breit
- Abstand
35.5 m

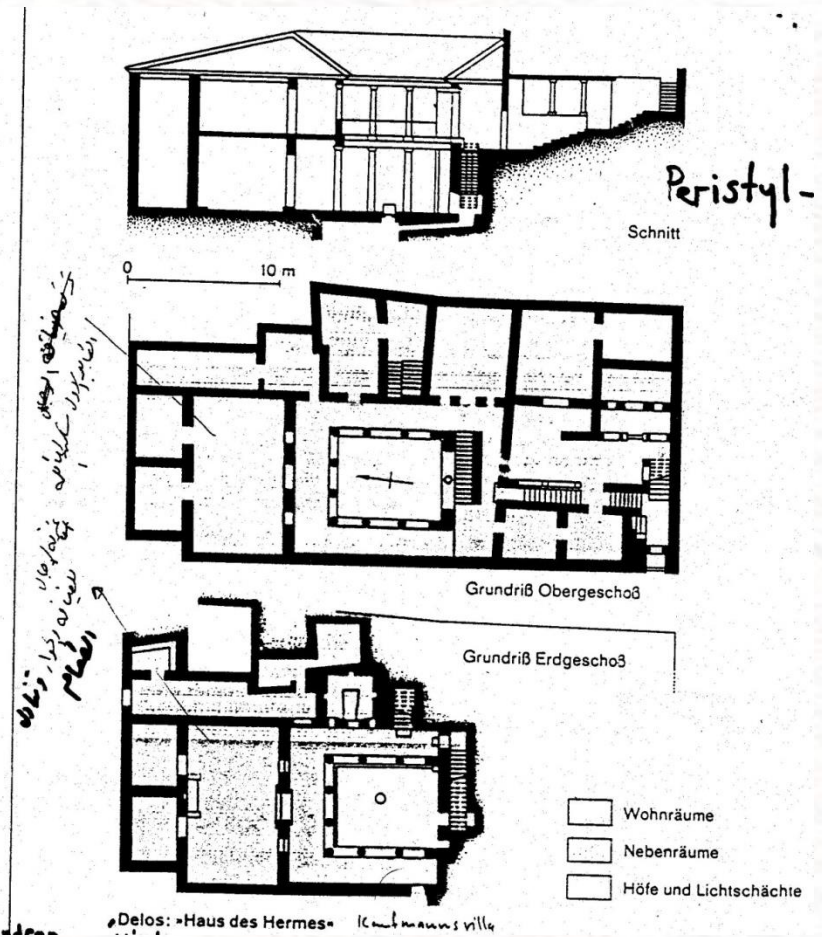
insula
- schmal-
händig
5:2
(Grundfläche)
der Hauptstr.

Erschließung
Weg 2 m

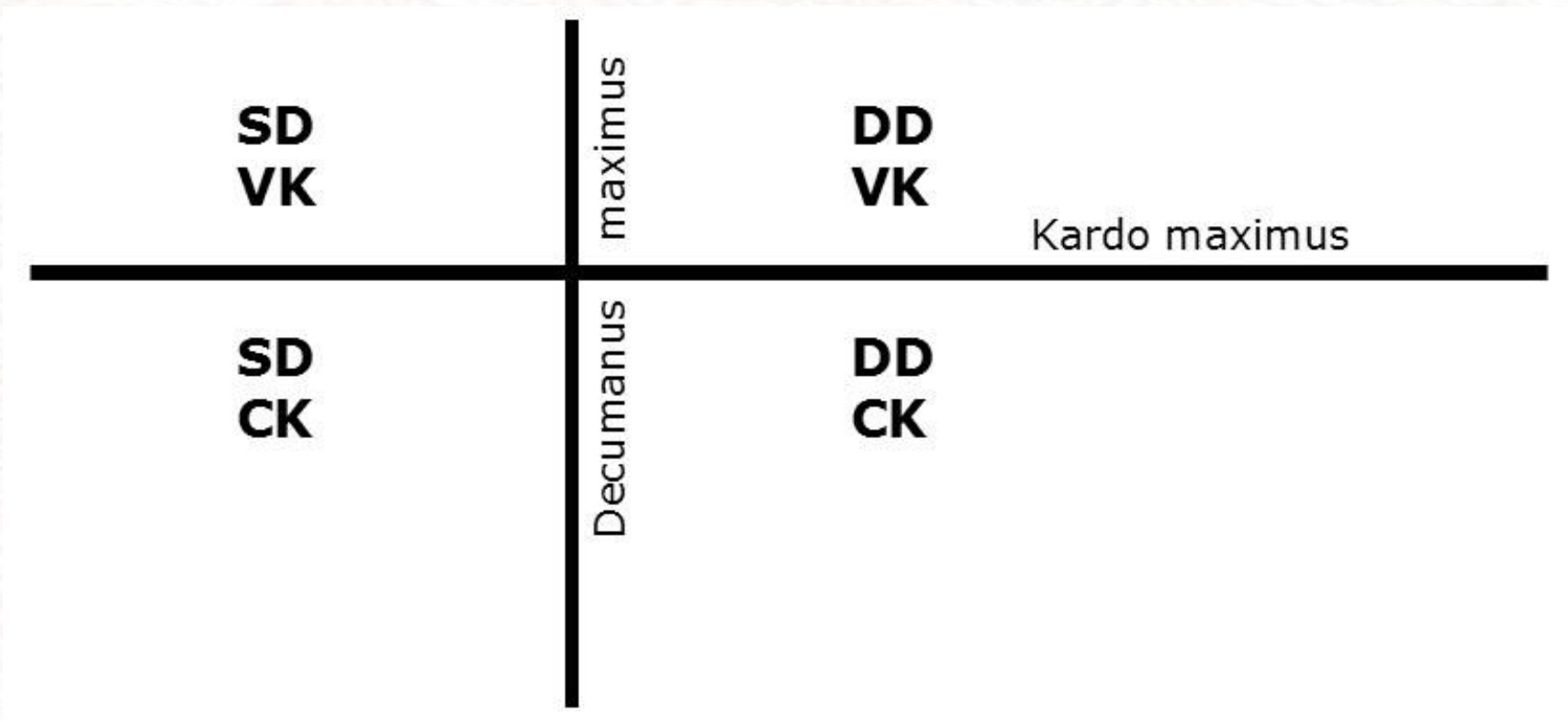
Inseln
landes
wenn
dern. I
steme
Neust
Das I
kleine
Haupt
hanga
GES zi
hört d
der St
trept
Zeit d
Tradit
Anlag
dische
Die g
die p
Straße
mäßig
Parzel
ersch
Straße
von I
Die
weise
Gasse
festen
risse
Durch
größe
haber
stöcki
satz z
meist

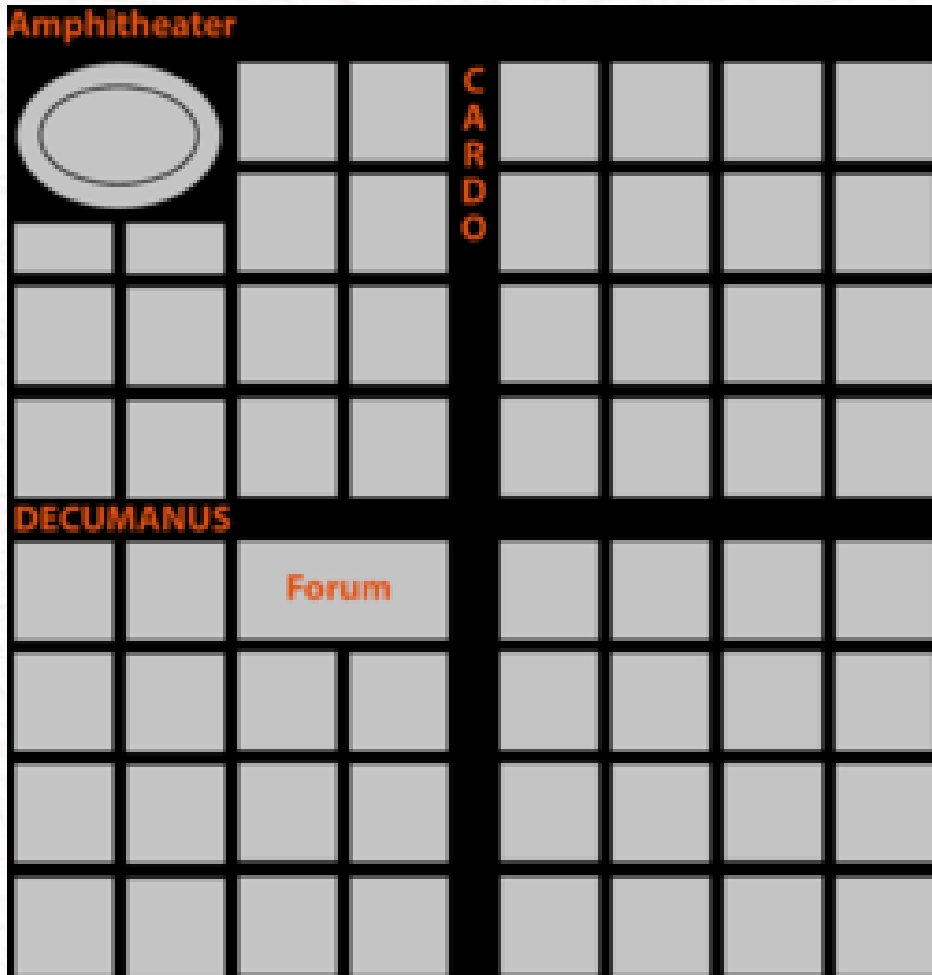
dtische Wohnviertel



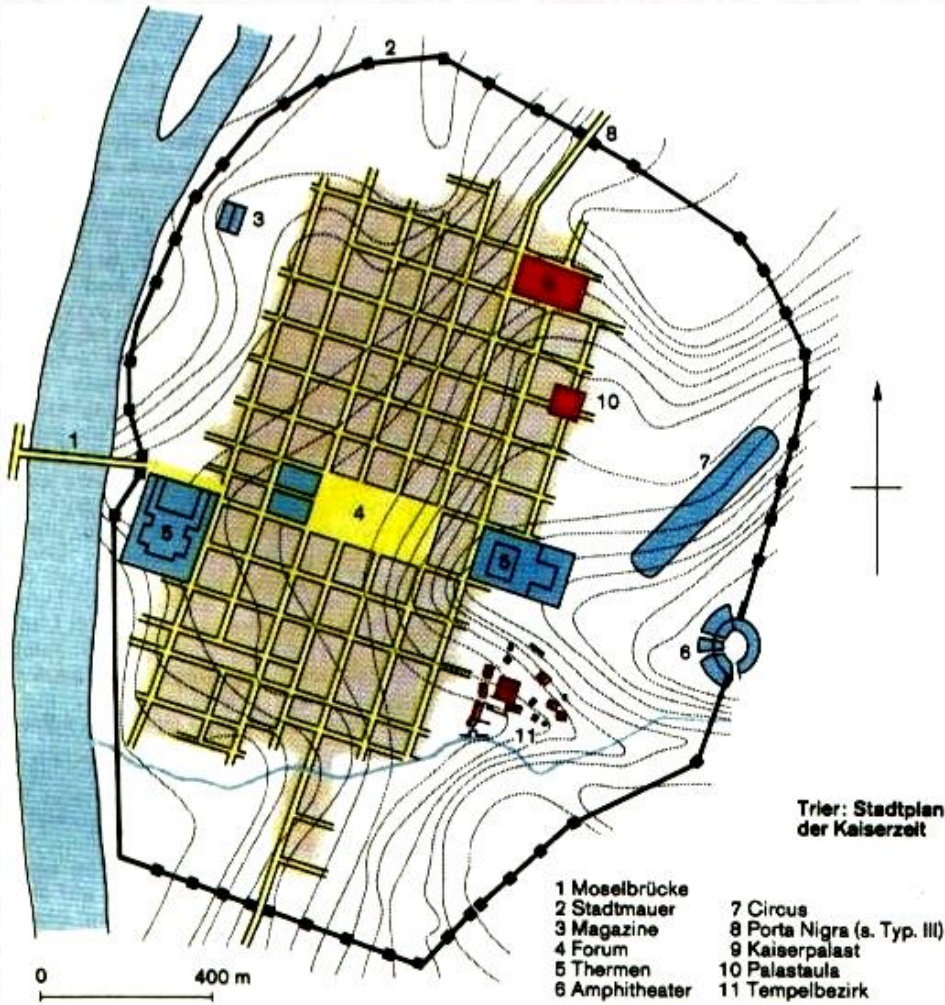


العمارة الإيطالية القديمة



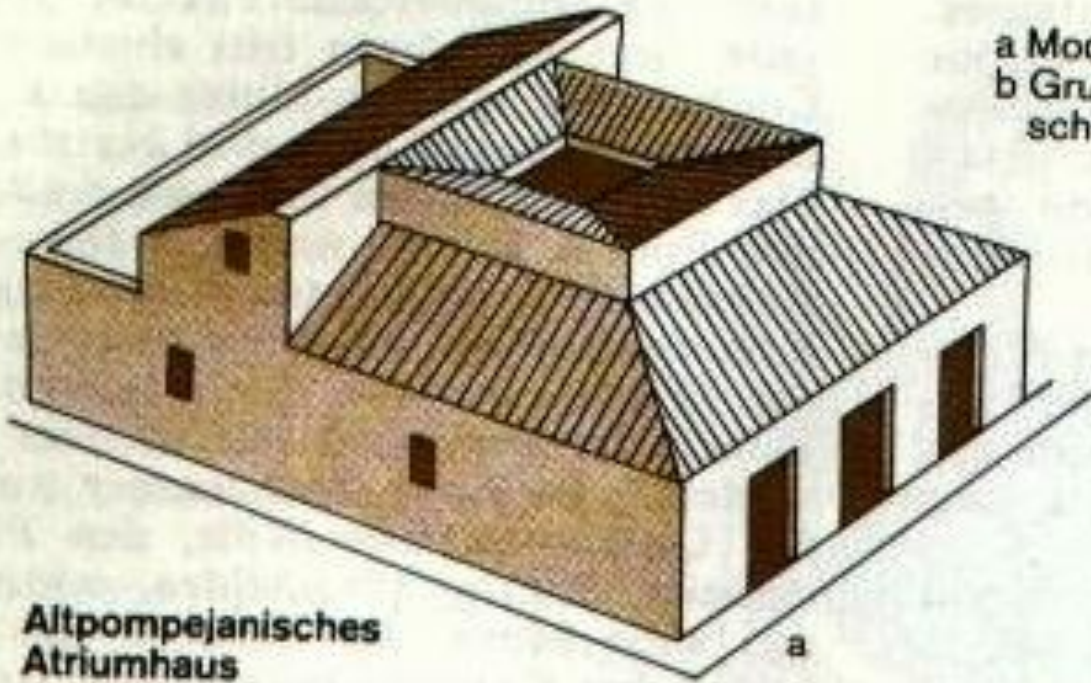






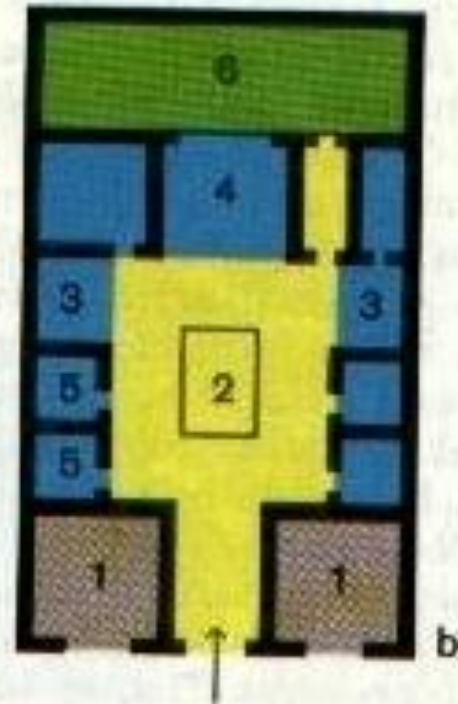
Trier: Stadtplan der Kaiserzeit

- | | |
|----------------|-----------------------------|
| 1 Moselbrücke | 7 Circus |
| 2 Stadtmauer | 8 Porta Nigra (s. Typ. III) |
| 3 Magazine | 9 Kaiserpalast |
| 4 Forum | 10 Palastaula |
| 5 Thermen | 11 Tempelbezirk |
| 6 Amphitheater | |



Altpompejanisches Atriumhaus

a Modell
b Grundriß-
schema



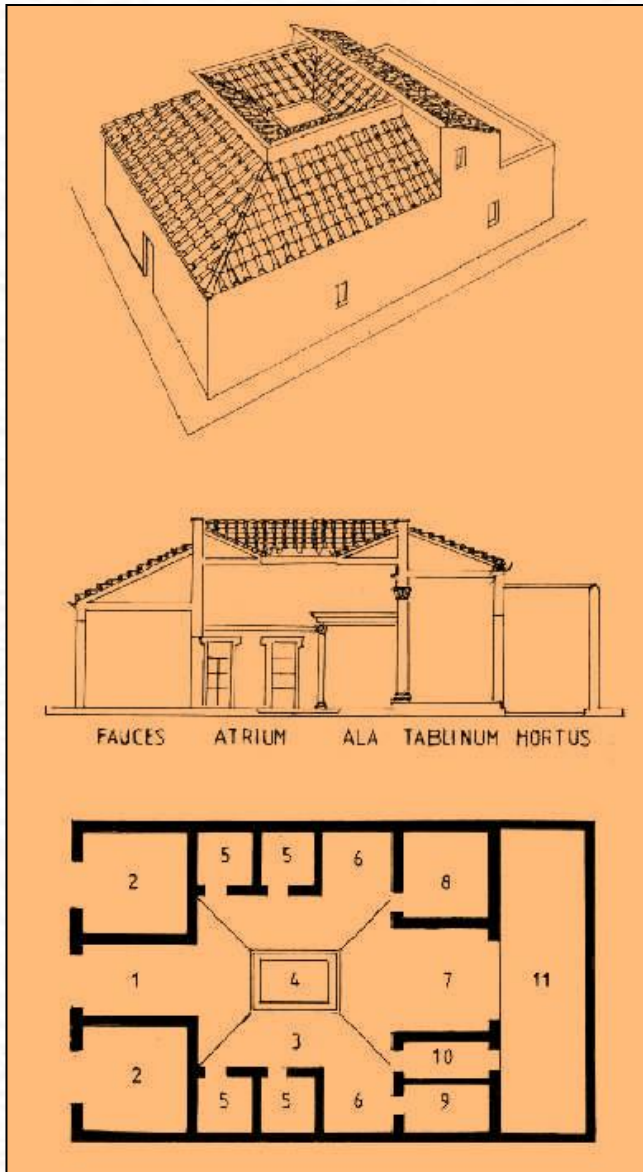
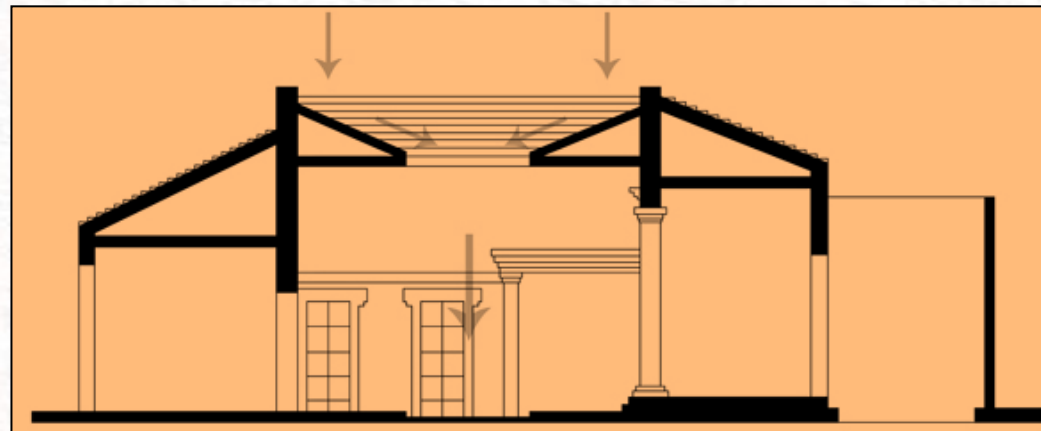


Abb. 4: Das italische Haus. Außenansicht, Längsschnitt und Grundriß.

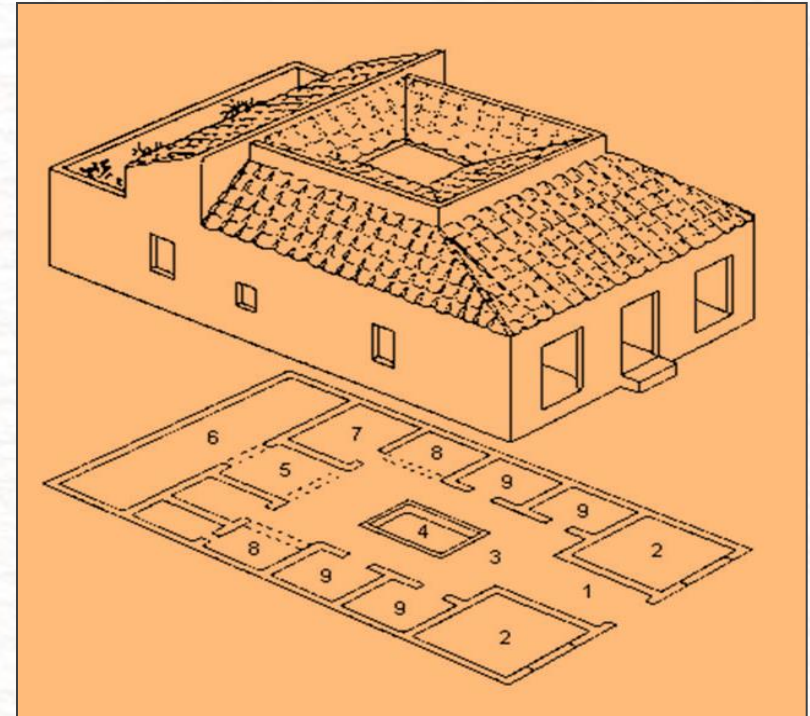
1. fauces
2. cella
3. atrium
4. impluvium
5. cubiculum
6. ala
7. tablinum
8. Triclinium
9. apotheca
10. andron
11. hortus

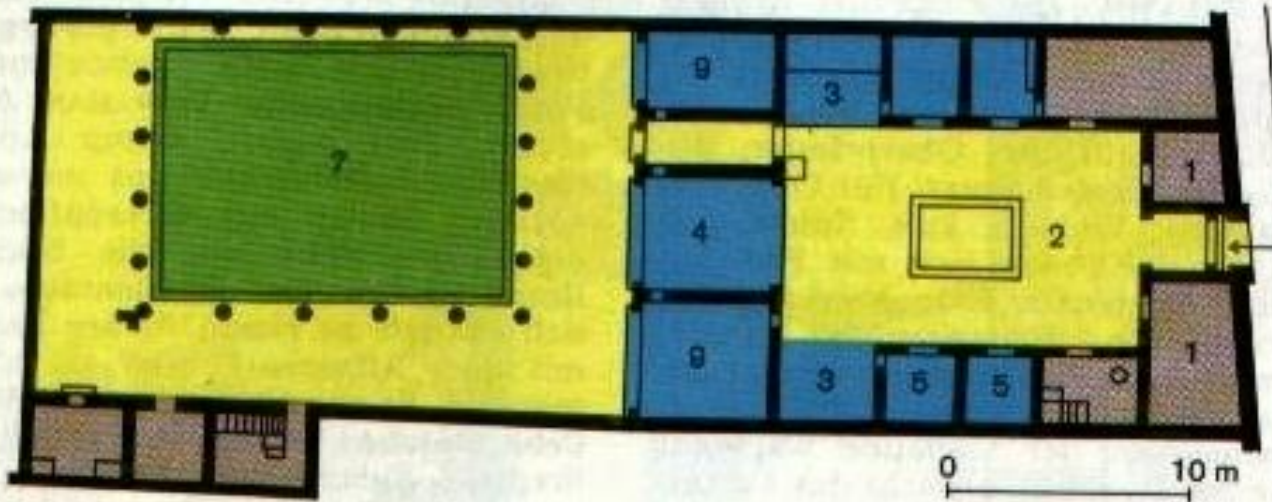
فراغات ثانوية

سفرة



1	fauces	Korridor	(كريدور)
2	tabernae	Läden	(دكان)
3	atrium	Wohnraum	(غرفة معيشة)
4	impluvium	Wasserbecken	(حوض ماء)
5	tablinum	Wohnraum	(غرفة معيشة)
6	triclinium	Eßzimmer	(سفرة)
7	andron	Gang	(
8	alae	Nebenräume	(فراغات ثانوية)
9	cubiculum	Schlaf- und Gästezimmer	(معيشة وضيوف)
10	culina	Küche	(مطبخ)
11	posticum	Hinter- oder Seitenausgang	(ممر جانبي أو خلفي)
12	exedra	Gartenzimmer	(برنדה بالحديقة)
13	hortus	Garten	(حديقة)
14	peristylum	Säulenhalle	(قاعة معمدة)

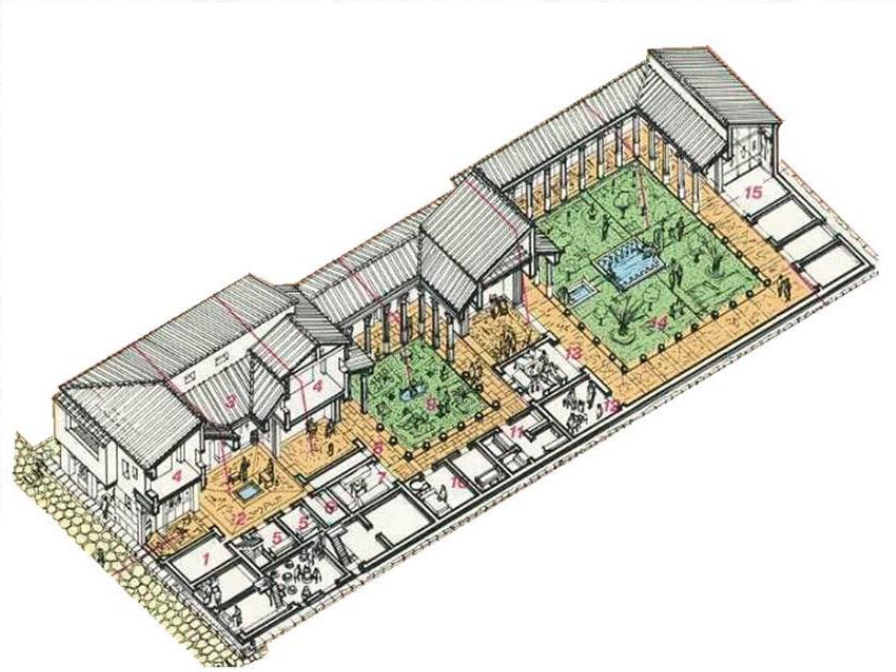




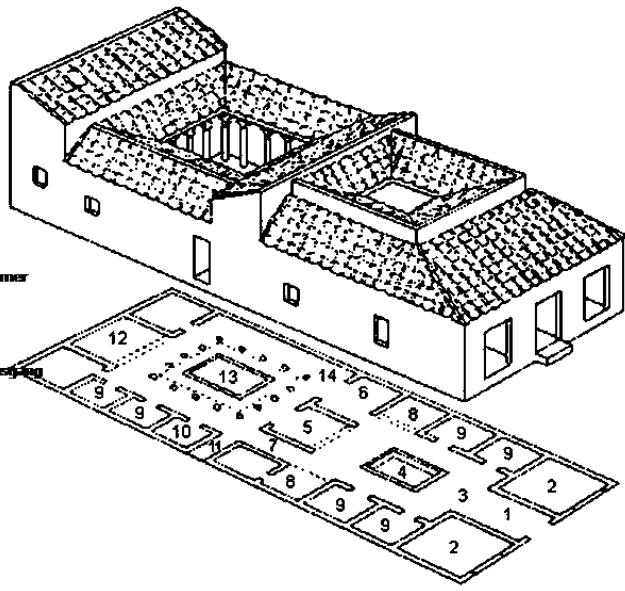
Pompejanisches Peristylhaus
(»Casa di Capiteli figurati«)



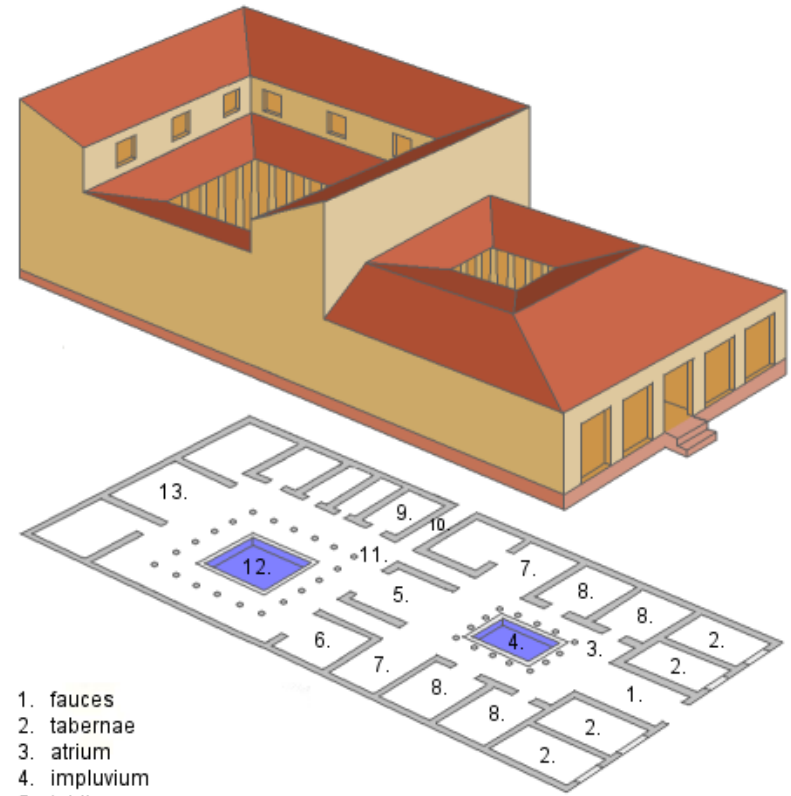
Pompejanisches Peristylhaus (schematischer Längsschnitt)



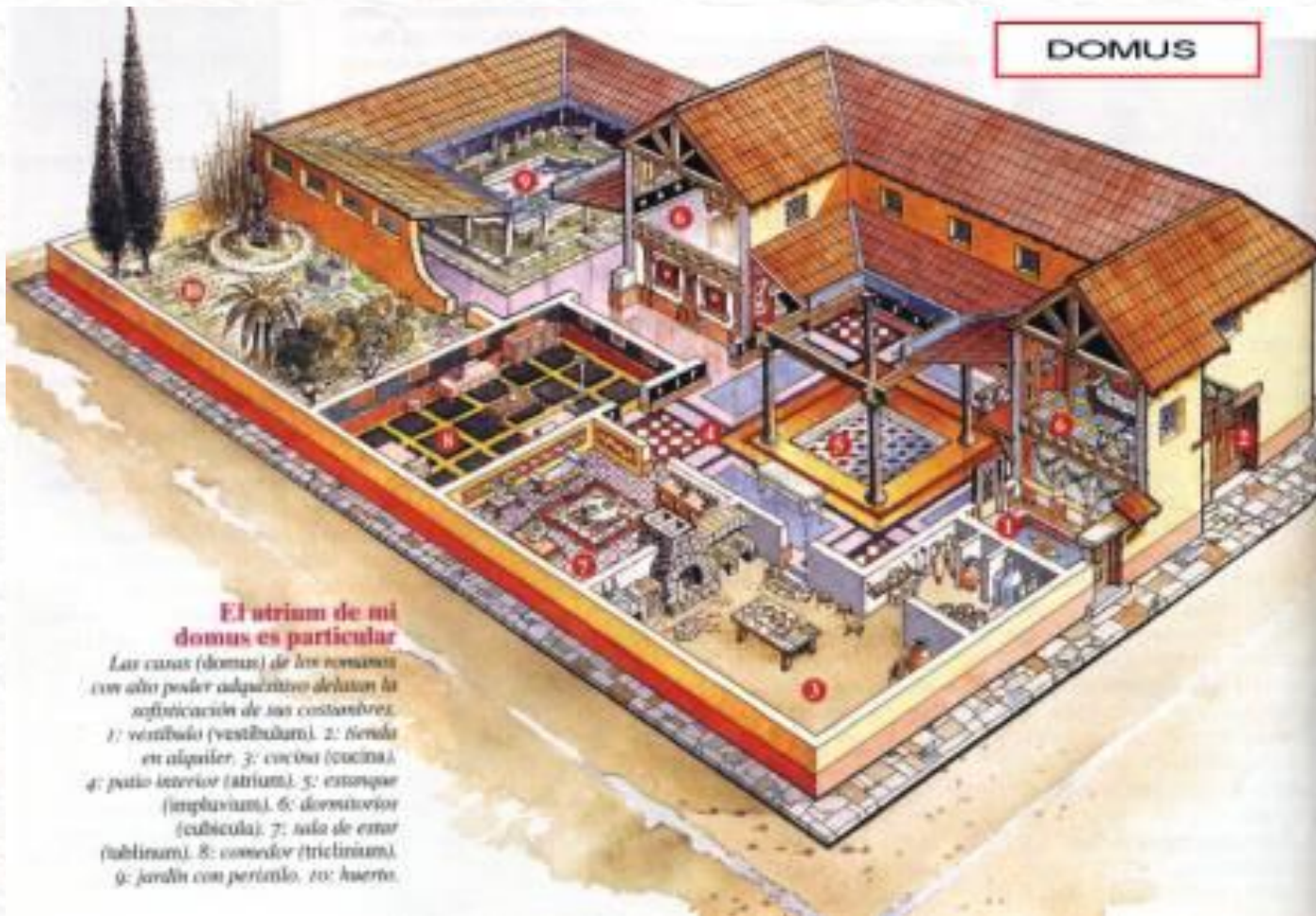
- 1 fauces Korridor
- 2 tabernae Läden
- 3 atrium Wohnraum
- 4 impluvium Wasserbecken
- 5 tablinum Wohnraum
- 6 triclinium Esszimmer
- 7 andron Gang
- 8 alae Nebenräume
- 9 cubiculum Schlaf- und Gästezimmer
- 10 culina Küche
- 11 posticum Hinter- oder Seitenausgang
- 12 exedra Gartenzimmer
- 13 hortus Garten
- 14 peristylum Säulenhalle
- 15 m

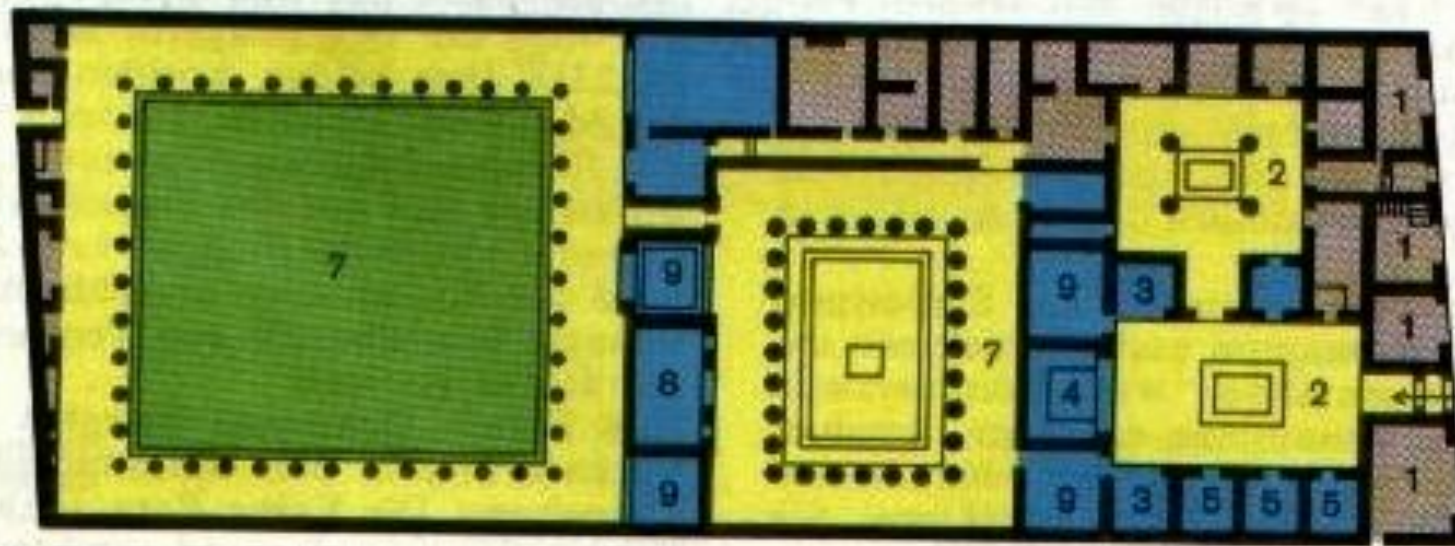


1. كوريدور
2. دكان
3. غرفة معيشة
4. حوض ماء
5. غرفة معيشة
6. سفرة
7. ممر/كوريدور
8. فراغات ثانوية
9. نوم وضيوف
10. مطبخ
11. ممر جانبي أو خلفي
12. برنדה بالحديقة
13. حديقة
14. قاعة معمدة




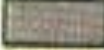
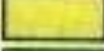

1. fauces
2. tabernae
3. atrium
4. impluvium
5. tablinum
6. triclinium
7. alae
8. cubiculum
9. culina
10. posticum
11. peristylum
12. piscina
13. exedra





Pompeji: großes Peristylhaus («Casa del Fauno»)

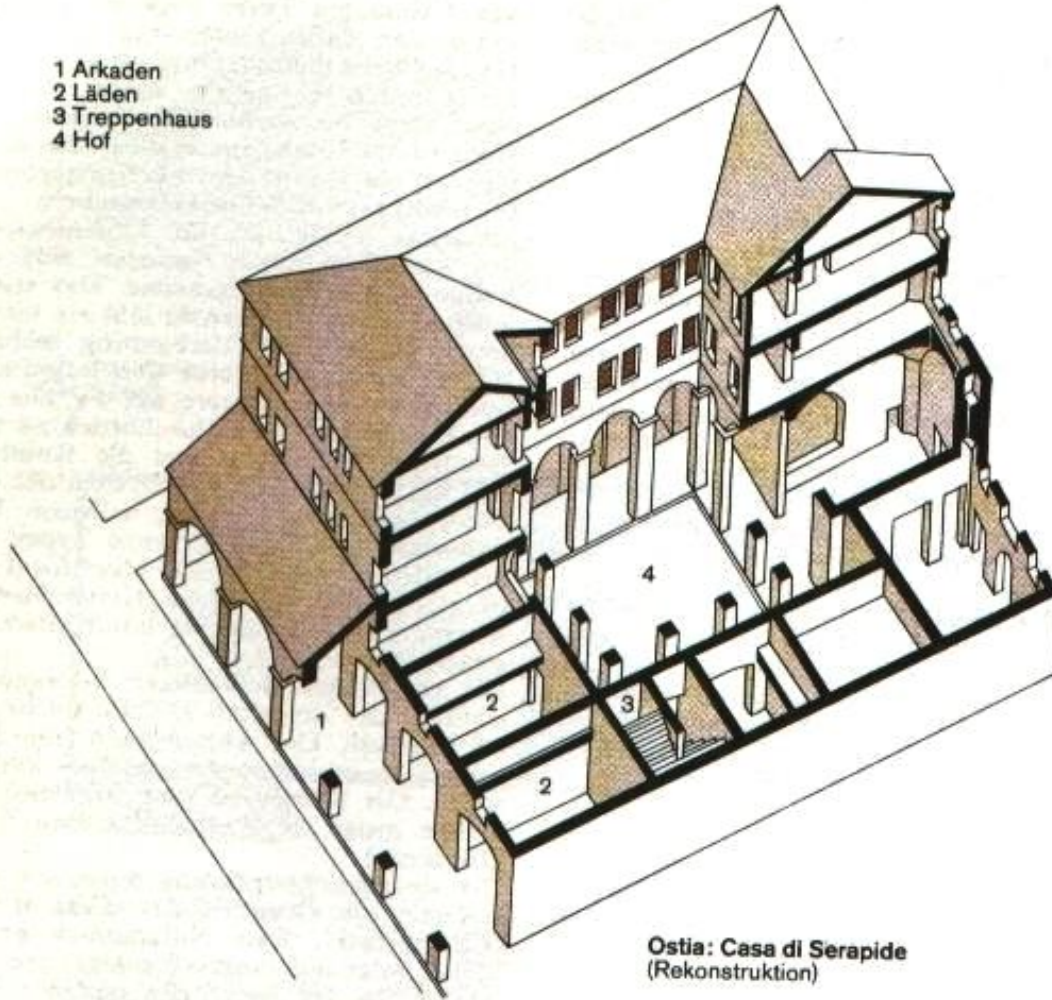
0 10 m

-  Wohnräume
-  Wirtschaftsräume
-  Gänge, Hallen, Höfe
-  Garten

- 1 Taberna
- 2 Atrium
- 3 Ala
- 4 Tablinum
- 5 Cubiculum

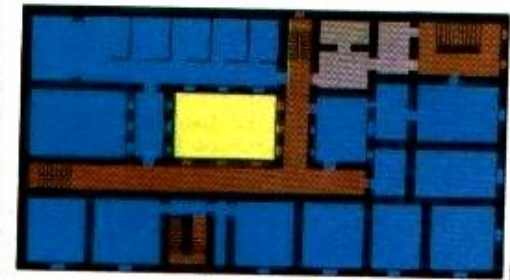
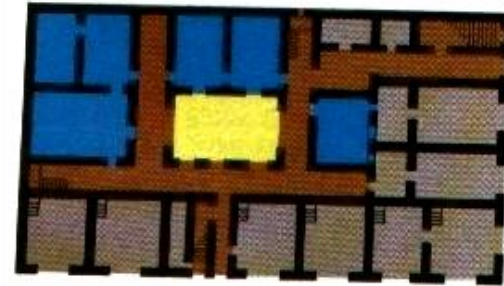
- 6 Garten
- 7 Peristyl
- 8 Exedra
- 9 Triclinium

- 1 Arkaden
- 2 Läden
- 3 Treppenhaus
- 4 Hof

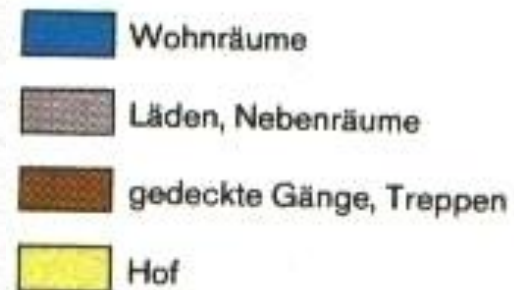


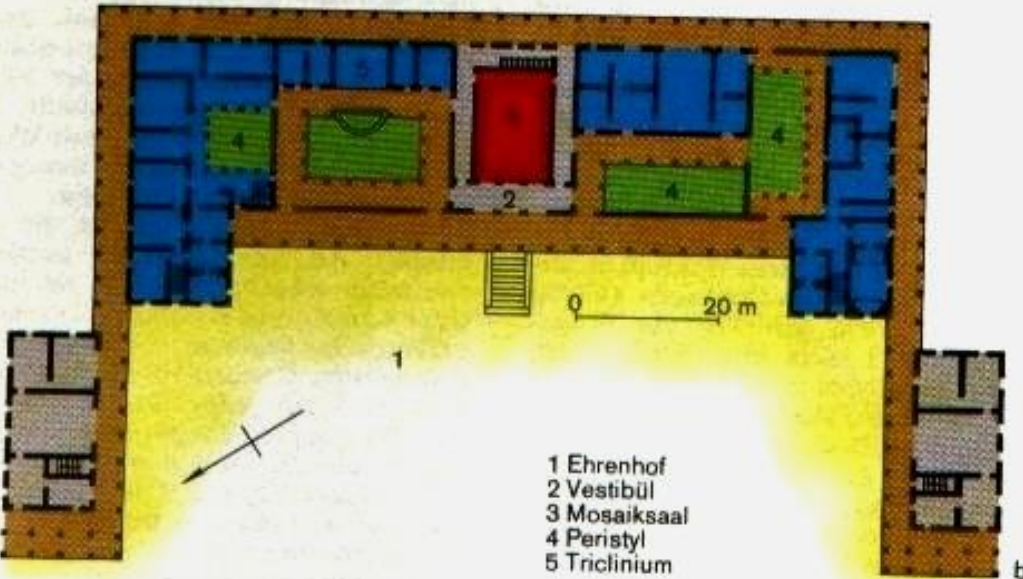
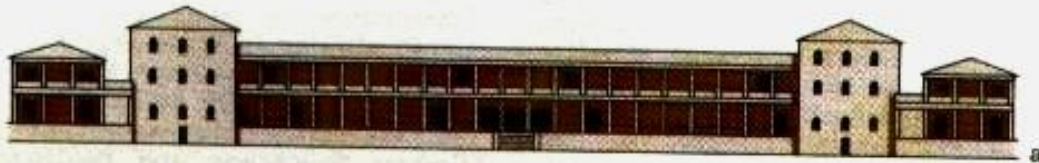
Ostia: Casa di Serapide
(Rekonstruktion)

0 10 m



Ostia: Casa di Diana
a Erdgeschoß, b Obergeschoß



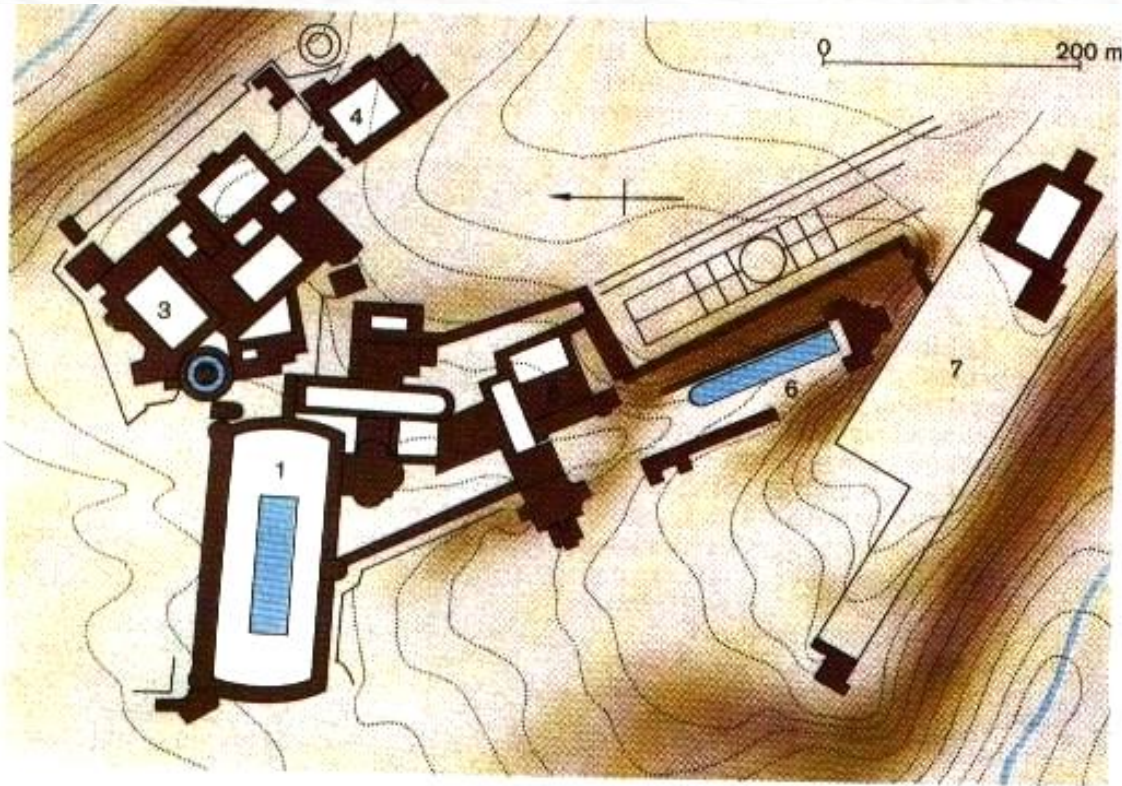


- 1 Ehrenhof
- 2 Vestibül
- 3 Mosaiksaal
- 4 Peristyl
- 5 Triclinium

Nennig: Villa

a Rekonstruktion
b Grundriß

	Repräsentation		Gartenhöfe
	Wohnungen		Höfe
	Nebenräume		Säulenhallen



Tivoli: Villa Hadriana
Lageplan

- | | |
|------------------|--------------|
| 1 »Poikile« | 5 Thermen |
| 2 Inselvilla | 6 »Canopus« |
| 3 Palastperistyl | 7 »Akademie« |
| 4 »Piazza d'Oro« | |









