

Example;

An object is fired from the ground at 100 meters per second at an angle of 30 degrees with the horizontal

- Calculate the horizontal and vertical components of the initial velocity
- After 2.0 seconds, how far has the object traveled in the horizontal direction?
- How high is the object at this point?

A.

$$v_{ix} = v_i \cos \theta = (100 \text{ m/s}) (\cos 30^\circ) = 87 \text{ m/s}$$

$$v_{iy} = v_i \sin \theta = (100 \text{ m/s}) (\sin 30^\circ) = 50 \text{ m/s}$$

B.

$$v_{ix} = \frac{\Delta x}{\Delta t}$$

$$\Delta x = v_{ix} t = (87 \text{ m/s}) (2.0 \text{ s}) = 174 \text{ m}$$

C.

$$\Delta y = v_{iy} \Delta t + \frac{1}{2} g (\Delta t)^2 = (50 \text{ m/s}) (2.0 \text{ s}) + \frac{1}{2} (9.8 \text{ m/s}^2) (2.0 \text{ s})^2$$

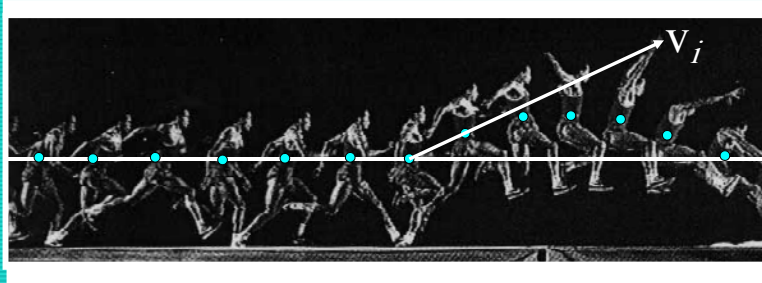
Physics

Dr. Abdallah M. Azzeer

1

Example;

Strobe photo of Mike Powell, world record holder for running long jump.



Suppose he runs at the speed of a good sprinter, $v = 10 \text{ m/s}$.

Also suppose he takes off at an angle of 25° .

What is the horizontal distance of the jump?

Physics

Dr. Abdallah M. Azzeer

2

horizontal distance:

$$\Delta x = v_i \cos \theta \cdot t$$

get the time from ...

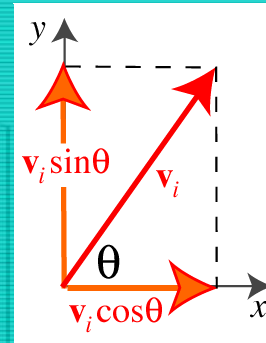
$$\Delta y = v_i \sin \theta \cdot t - \frac{1}{2} g t^2$$

$$\text{so for } \Delta y = 0, \quad t = \frac{2v_i \sin \theta}{g}$$

plug back in...

$$\Delta x = v_i \cos \theta \cdot t$$

$$= v_i \cos \theta \cdot \frac{2v_i \sin \theta}{g} = \frac{2v_i^2}{g} \cos \theta \sin \theta$$



**This is only true if
 $\Delta y = 0$, i.e. $y_f = y_i$.**

Physics

Dr. Abdallah M. Azzeer

3



$$\begin{aligned} \Delta x &= \frac{2v_i^2}{g} \cos \theta \cdot \sin \theta \\ &= \frac{2 (10 \text{ m/s})^2}{9.8 \text{ m/s}^2} 0.91 \cdot 0.42 = 7.8 \text{ m} \end{aligned}$$

Not his best jump...
World record 8.95 m !

Physics

Dr. Abdallah M. Azzeer

4

How to set the world record long jump

At what angle should Powell have jumped?

$$\Delta x = \frac{2v_i^2}{g} \cos \theta \cdot \sin \theta$$

A little calculus tells us that $\cos \theta \cdot \sin \theta$ has its maximal value of 0.5 when $\theta = 45^\circ$.

A jump at the same speed but at 45° would give:

$$\Delta x = \frac{2v_i^2}{g} \cos \theta \cdot \sin \theta = \frac{2 (10 \text{ m/s})^2}{9.8 \text{ m/s}^2} 0.5 = 10.2 \text{ m}$$

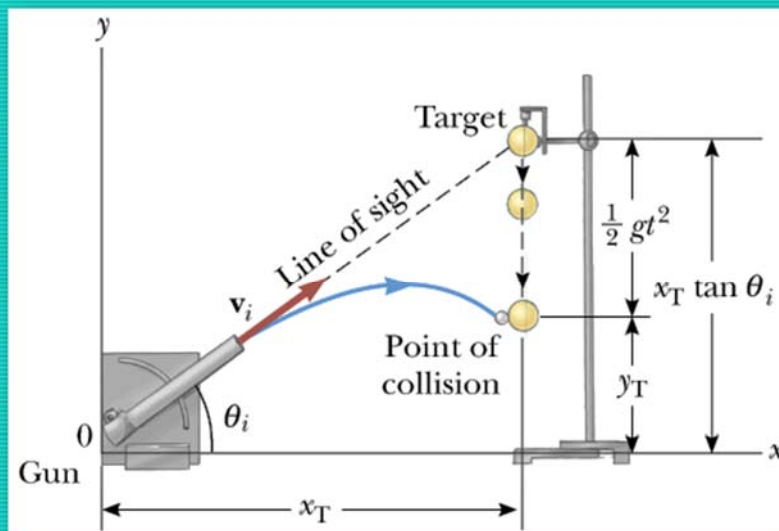
More than a meter **over** the world record!!!

Physics

Dr. Abdallah M. Azzeer

5

Example : Hitting the bull's eye. How's that?



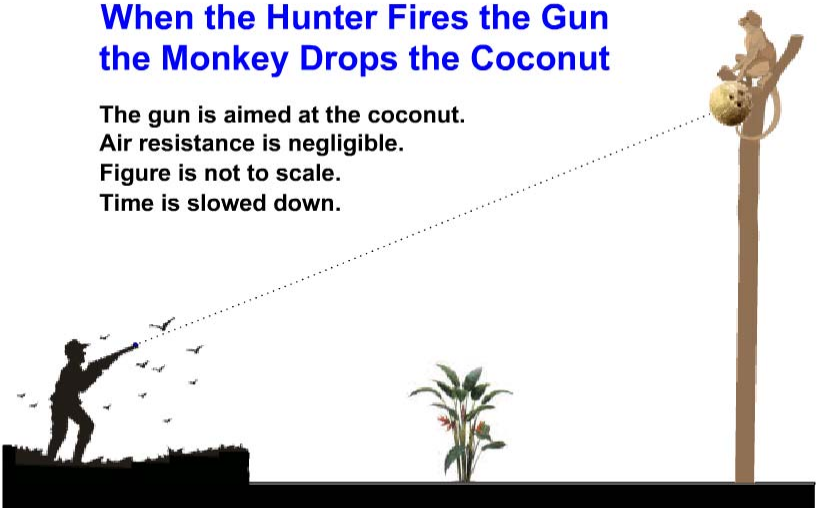
Physics

Dr. Abdallah M. Azzeer


6

When the Hunter Fires the Gun the Monkey Drops the Coconut

The gun is aimed at the coconut.
Air resistance is negligible.
Figure is not to scale.
Time is slowed down.



Copyright © 2004 David M. Harrison

Click to begin: 

Physics
Dr. Abdallah M. Azzeer
7

PROJECTILE MOTION

Neglecting air resistance...

Projectiles follow *parabolic* trajectories:

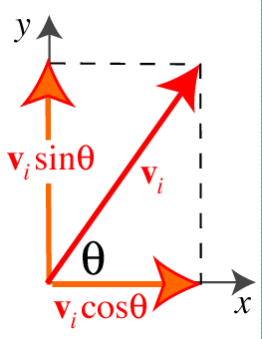
Parabolic proof

$v_x = v_i \cos \theta$ remains constant so

$$\Delta x = x = v_i \cos \theta \cdot t \Rightarrow t = \frac{x}{v_i \cos \theta}$$

$$\left. \begin{array}{l} v_{yi} = v_i \sin \theta \\ a_y = -g \\ \Delta t = t \\ \Delta y = y = ? \end{array} \right\} y = v_i \sin \theta \cdot t - \frac{1}{2} g \cdot t^2$$

$$\Rightarrow y = (\tan \theta)x - \left(\frac{g}{2v_i^2 \cos^2 \theta} \right) x^2$$



Physics
Dr. Abdallah M. Azzeer
8

Example for a Projectile Motion

- A stone was thrown upward from the top of a cliff at an angle of 37° to horizontal with initial speed of 65.0 m/s . If the height of the cliff is 125.0 m , how long is it before the stone hits the ground?

$$v_{xi} = v_i \cos \theta_i = 65.0 \times \cos 37^\circ = 51.9 \text{ m/s}$$

$$v_{yi} = v_i \sin \theta_i = 65.0 \times \sin 37^\circ = 39.1 \text{ m/s}$$

$$y_f = -125.0 = v_{yi}t - \frac{1}{2}gt^2$$

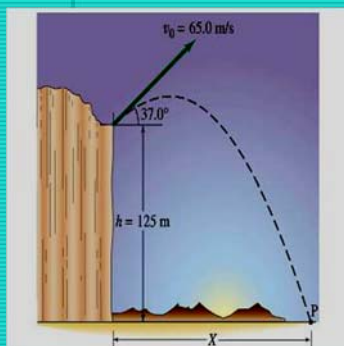
$$gt^2 - 78.2t - 250 = 9.80t^2 - 78.2t - 250 = 0$$

$$t = \frac{78.2 \pm \sqrt{(-78.2)^2 - 4 \times 9.80 \times (-250)}}{2 \times 9.80}$$

$$t = -2.43 \text{ s} \text{ or } t = 10.4 \text{ s}$$

$$t = 10.4 \text{ s}$$

Since negative time does not exist.



Physics

Dr. Abdallah M. Azzeer

9

Example cont'd

- What is the speed of the stone just before it hits the ground?

$$v_{xf} = v_{xi} = v_i \cos \theta_i = 65.0 \times \cos 37^\circ = 51.9 \text{ m/s}$$

$$v_{yf} = v_{yi} - gt = v_i \sin \theta_i - gt = 39.1 - 9.80 \times 10.4 = -62.8 \text{ m/s}$$

$$|v| = \sqrt{v_{xf}^2 + v_{yf}^2} = \sqrt{51.9^2 + (-62.8)^2} = 81.5 \text{ m/s}$$

- What are the maximum height and the maximum range of the stone?

Do these yourselves at home for fun!!!

Physics

Dr. Abdallah M. Azzeer

10

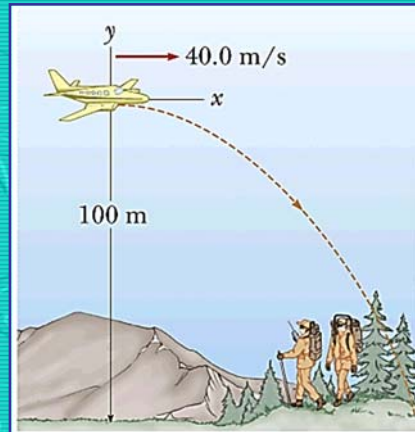
Example:

A rescue plane drops a package to stranded explorers. The plane is traveling horizontally at 40.0 m/s and is 100 m above the ground.

A. Where does the package strike the ground relative to the point at which it was released.

B. What are the horizontal and vertical components of the velocity of the package just before it hits the ground? What is the speed of the package as it hits the ground?

C. Where is the plane when the package hits the ground? (Assume that the plane does not change its speed or course.)



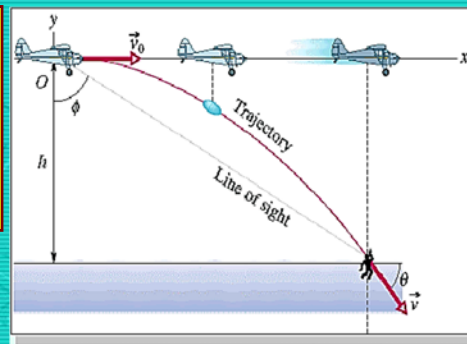
Physics

Dr. Abdallah M. Azzeer

11

Sample Problem 4-6

In the Fig., a rescue plane flies at 198 km/h ($= 55.0 \text{ m/s}$) and a constant elevation of 500 m toward a point directly over a boating accident victim struggling in the water. The pilot wants to release a rescue capsule so that it hits the water very close to the victim.



Physics

Dr. Abdallah M. Azzeer

12

(a) What should be the angle ϕ of the pilot's line of sight to the victim when the release is made?

Solution

$$\phi = \tan^{-1} \frac{x}{h}$$

$$x - x_0 = (v_0 \cos \theta_0) t$$

$$y - y_0 = (v_0 \sin \theta_0) t - \frac{1}{2} g t^2$$

$$-500 \text{ m} = (55.0 \text{ m/s})(\sin 0^\circ) t - \frac{1}{2} (9.8 \text{ m/s}^2) t^2$$

Solving for t , we find $t = \pm 10.1 \text{ s}$ (take the positive root).

$$x - 0 = (55.0 \text{ m/s})(\cos 0^\circ)(10.1 \text{ s})$$

$$x = 555.5 \text{ m}$$

$$\phi = \tan^{-1} \frac{555.5 \text{ m}}{500 \text{ m}} = 48^\circ$$

Physics

Dr. Abdallah M. Azzeer

13

(b) As the capsule reaches the water, what is its velocity \vec{v} in unit-vector notation and as a magnitude and an angle?

When the capsule reaches the water,

$$v_x = v_0 \cos \theta_0 = (55.0 \text{ m/s})(\cos 0^\circ) = 55.0 \text{ m/s}$$

$$\begin{aligned} v_y &= v_0 \sin \theta_0 - g t \\ &= (55.0 \text{ m/s})(\sin 0^\circ) - (9.8 \text{ m/s}^2)(10.1 \text{ s}) \\ &= -99.0 \text{ m/s} \end{aligned}$$

$$\vec{v} = (55.0 \text{ m/s})\hat{i} - (99.0 \text{ m/s})\hat{j}$$

$$v = 113 \text{ m/s} \quad \text{and} \quad \theta = -61^\circ$$

Physics

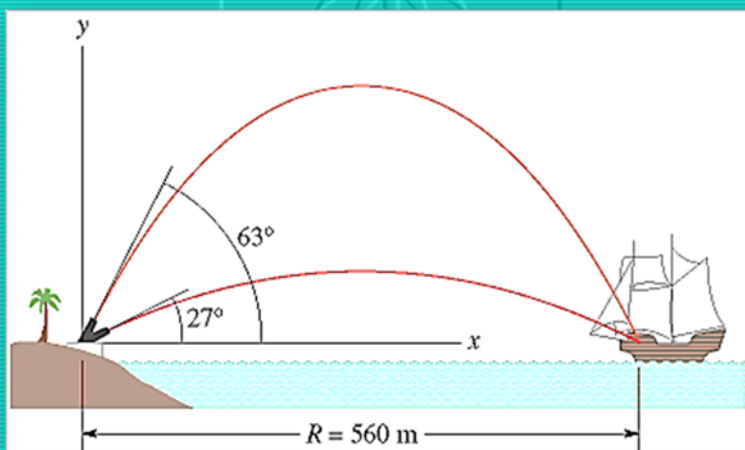
Dr. Abdallah M. Azzeer

14

Sample Problem

Figure shows a pirate ship 560 m from a fort defending the harbor entrance of an island. A defense cannon, located at sea level, fires balls at initial speed $v_0 = 82$ m/s.

- (a) At what angle θ_0 from the horizontal must a ball be fired to hit the ship?
 (b) How far should the pirate ship be from the cannon if it is to be beyond the maximum range of the cannonballs?



Physics

Dr. Abdallah M. Azzeer

15

SOLUTION:

(a) $R = \frac{v_0^2}{g} \sin 2\theta_0$ Which gives

$$2\theta_0 = \sin^{-1} \frac{g R}{v_0^2} = \sin^{-1} \frac{(9.8 \text{ m/s}^2)(560 \text{ m})}{(82 \text{ m/s})^2} = \sin^{-1} 0.816$$

There are two solutions

$$\theta_0 = \frac{1}{2} (54.7^\circ) \approx 27^\circ$$

$$\theta_0 = \frac{1}{2} (125.3^\circ) \approx 63^\circ$$

(b) Maximum range is :-

$$\begin{aligned} R &= \frac{v_0^2}{g} \sin 2\theta_0 = \frac{(82 \text{ m/s})^2}{9.8 \text{ m/s}^2} \sin (2 \times 45^\circ) \\ &= 686 \text{ m} \approx 690 \text{ m} . \end{aligned}$$

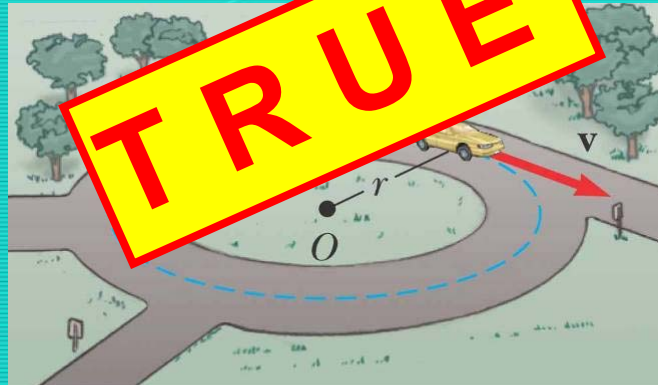
The maximum range is 690m. Beyond that distance, the ship is safe from the cannon.

Physics

Dr. Abdallah M. Azzeer

16

Car in a circle



TRUE OR FALSE? – A car moving in a circle at constant speed is accelerated.

Physics

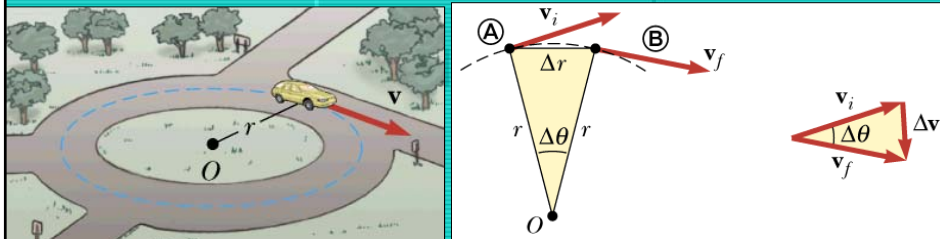
Dr. Abdallah M. Azzeer

17

Uniform Circular Motion

→ Motion in a circular path at constant speed.

- Velocity is changing, thus there is an acceleration!!
- Acceleration is perpendicular to velocity
- **Centripetal** acceleration is towards the center of the circle
- Magnitude of acceleration is $a_r = \frac{v^2}{r}$
- r is radius of circle

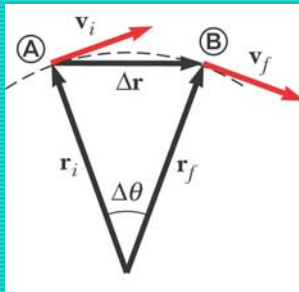


Physics

Dr. Abdallah M. Azzeer

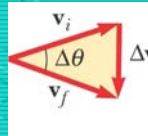
18

UNIFORM CIRCULAR MOTION



Acceleration is in the same direction as the change in velocity.

$$\Delta \mathbf{v} = \mathbf{v}_f - \mathbf{v}_i$$



$$a = \frac{\Delta \mathbf{v}}{\Delta t}$$

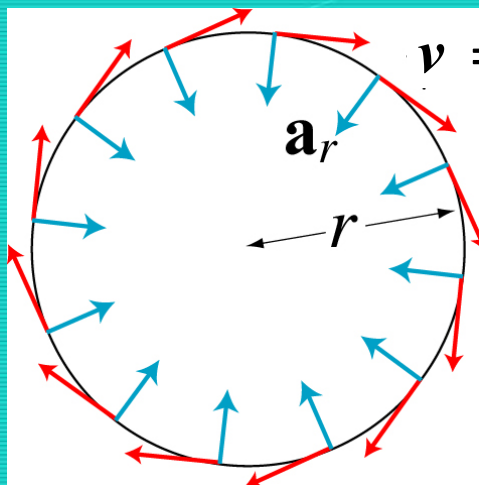
An object moving in a circle at constant speed has an instantaneous acceleration, which ...
... is called the **radial** or **centripetal** acceleration, ...
... and which points towards the **center** of the circle.

Physics

Dr. Abdallah M. Azzeer

19

UNIFORM CIRCULAR MOTION



$$v = \frac{\Delta r}{\Delta t}$$

Velocity is always tangent to the circle, hence perpendicular to the radius.

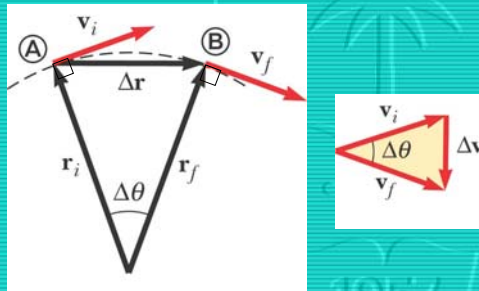
Physics

Dr. Abdallah M. Azzeer

20

Acceleration derivation

Similar triangles: $\frac{\Delta v}{v} = \frac{\Delta r}{r} \Rightarrow \Delta v = \frac{v \Delta r}{r}$



$$a_r = \lim_{\Delta t \rightarrow 0} \frac{\Delta v}{\Delta t} = \lim_{\Delta t \rightarrow 0} \frac{v}{r} \cdot \frac{\Delta r}{\Delta t} = \frac{v^2}{r}$$

Physics

Dr. Abdallah M. Azzeer

21

EXAMPLE;

Approximately what is the centripetal acceleration of someone standing at the Earth's equator?

- A. $7 \times 10^{-5} \text{ m/s}^2$
- B. 0.03 m/s^2
- C. 9.8 m/s^2
- D. $3 \times 10^8 \text{ m/s}^2$
- E. No idea



$$r_{\text{earth}} = 6.4 \times 10^6 \text{ m}$$

$$v = \frac{2\pi r}{T} = \frac{2\pi (6.4 \times 10^6 \text{ m})}{24 \times 60 \times 60 \text{ s}} = 465 \text{ m/s}$$

$$a = \frac{v^2}{r} = \frac{(465 \text{ m/s})^2}{6.4 \times 10^6 \text{ m}} = 0.034 \text{ m/s}^2$$

Physics

Dr. Abdallah M. Azzeer

22

EXAMPLE;

If a particular San Francisco hill has a radius of curvature of 20 m, what speed does the driver have to reach at the top of the hill in order to become airborne?



$$\frac{v^2}{r} = g \Rightarrow$$

$$v = \sqrt{r \cdot g} = \sqrt{20 \text{ m} \cdot 9.8 \text{ m/s}^2} = 14 \text{ m/s}$$

$$= 14 \text{ m/s} (3600 \text{ s/hr}) (1 \text{ km}/1000 \text{ m})$$

$$= 50 \text{ km/hr}$$

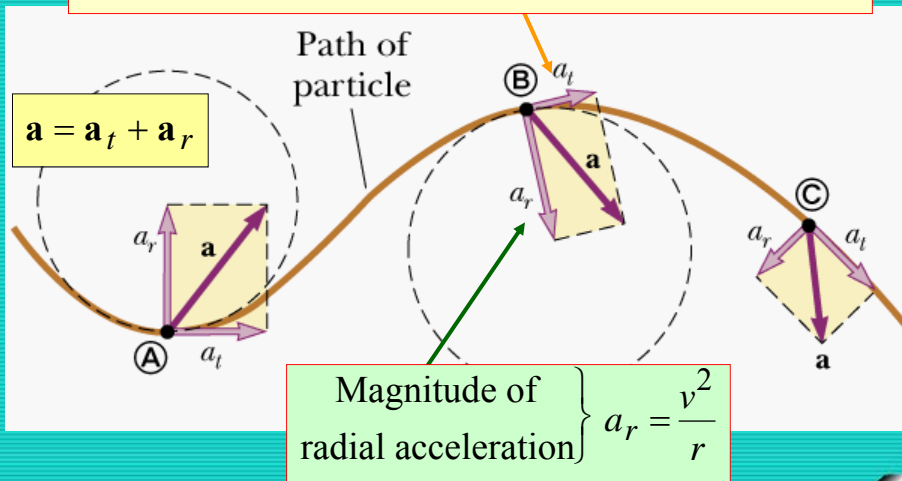
Physics

Dr. Abdallah M. Azzeer

23

MOTION ALONG CURVED PATH WITH CHANGING SPEED

Magnitude of tangential acceleration $\left\{ a_t = \lim_{\Delta t \rightarrow 0} \frac{\Delta \text{Speed}}{\Delta t} = \frac{d|\mathbf{v}|}{dt} \right.$



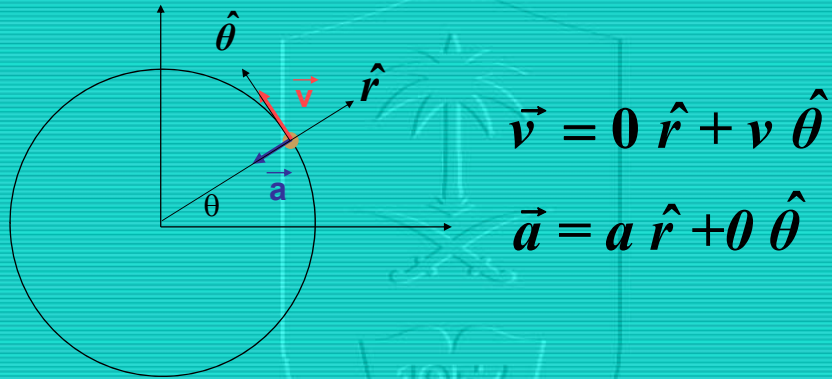
Physics

Dr. Abdallah M. Azzeer

24

Radial and Tangential Quantities

For uniform circular motion



$$\vec{v} = 0 \hat{r} + v \hat{\theta}$$

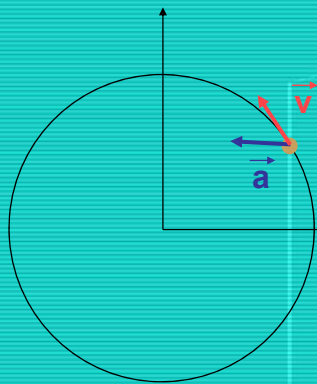
$$\vec{a} = a \hat{r} + 0 \hat{\theta}$$

Physics

Dr. Abdallah M. Azzeer

25

What about non-uniform circular motion ?



$$\vec{v} = 0 \hat{r} + v \hat{\theta}$$

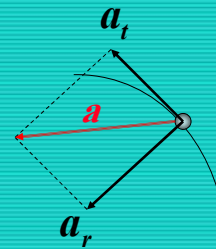
$$\vec{a} = a_r \hat{r} + a_t \hat{\theta}$$

a_t is along the direction of motion

$$a_t = \frac{d|\vec{v}|}{dt}$$

a_r is perpendicular to the direction of motion

$$a_r = \frac{v^2}{r}$$



Physics

Dr. Abdallah M. Azzeer

26

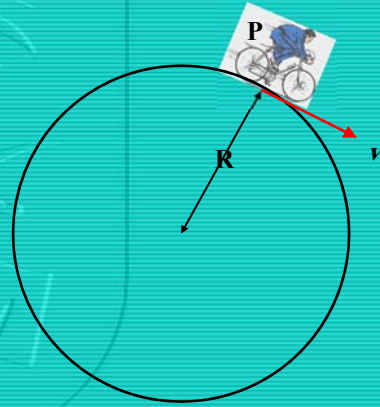
READ EXAMPLE 4.9

More Example:

(a) When at point P on a circular track of radius 50 m, a bicyclist has a speed of 5 m/s. In units of m/s^2 , the magnitude of his centripetal acceleration is closest to...

- A. 0.1
- B. 0.5
- C. 10
- D. 55
- E. 250

$$a_r = \frac{v^2}{r} = \frac{(5 \text{ m/s})^2}{50 \text{ m}} = 0.50 \frac{\text{m}}{\text{s}^2}$$



Physics

Dr. Abdallah M. Azzeer

27

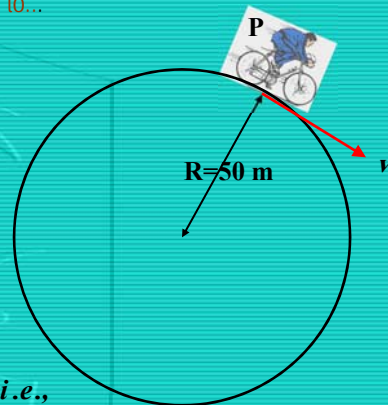
(b) He increases his speed at a constant rate during the next lap, and 44.9 s later is back at P. His average speed for the lap was closest to...

- A. 6 m/s
- B. 7 m/s
- C. 9 m/s
- D. 12 m/s
- E. 15 m/s

$$\bar{v} = \frac{\Delta s}{\Delta t} = \frac{2\pi R}{\Delta t} = \frac{2\pi \times 50 \text{ m}}{44.9 \text{ s}} = 7.0 \frac{\text{m}}{\text{s}},$$

where Δs is the distance around one lap, i.e.,

the circumference of the circular track.



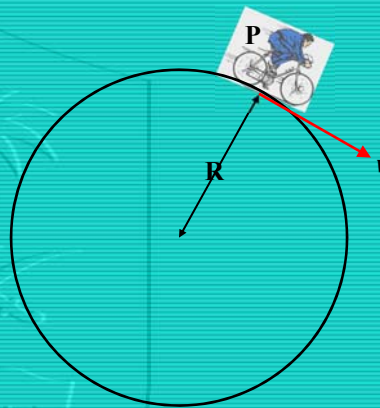
Physics

Dr. Abdallah M. Azzeer

28

(c) His *new* instantaneous speed at P is closest to...

- A. 6 m/s
- B. 7 m/s
- C. 9 m/s
- D. 12 m/s
- E. 15 m/s



Because he increases his speed at a constant rate:

$$\bar{v} = \frac{v_i + v_f}{2} \Rightarrow v_f = 2\bar{v} - v_i = (2 \times 7.0 - 5.0) \frac{m}{s} = 9.0 \frac{m}{s}$$

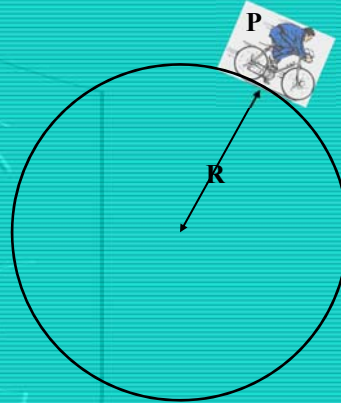
Physics

Dr. Abdallah M. Azzeer

29

(d) While he is speeding up, his tangential acceleration in m/s^2 is closest to...

- A. 0.09
- B. 0.21
- C. 0.34
- D. 0.38
- E. 0.55



$$a_t = \frac{\Delta v}{\Delta t} = \frac{v_f - v_i}{t} = \frac{(9.0 - 5.0) \frac{m}{s}}{44.9 \text{ s}} = 0.089 \frac{m}{s^2}$$

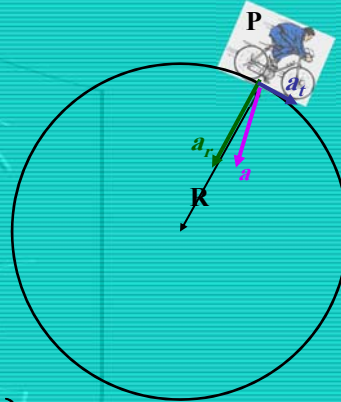
Physics

Dr. Abdallah M. Azzeer

30

(e) When her velocity is 6.0 m/s the magnitude of her total acceleration in m/s^2 is closest to...

- A. 0.1
- B. 0.2
- C. 0.3
- D. 0.7



$$\left. \begin{aligned} a_r &= \frac{v^2}{r} = \frac{(6.0 \text{ m/s})^2}{50 \text{ m}} = 0.720 \frac{\text{m}}{\text{s}^2} \\ a_t &= 0.089 \frac{\text{m}}{\text{s}^2} \end{aligned} \right\} a = \sqrt{a_r^2 + a_t^2} = 0.725 \frac{\text{m}}{\text{s}^2}$$

Physics

Dr. Abdallah M. Azzeer

31