

State of the art Ultrasound.



Areej Saud Aloufi

Done by

Samar Mammdoh Esmail

US System Components

The system comprises a monitor, a system control panel, and a cart.





Monitor display
controls Front handle
Height release handle
CD drive
Physio panel
Optical disk drive
Floppy disk drive
On/Off button
Reset button
Foot switch
Rotation lock lever
Soft keys
System control panel
Transducer holders
Transducer
connectors
Wheel lock
Wheel

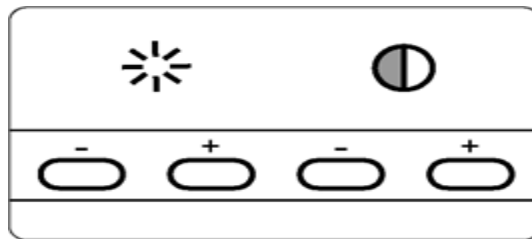
Adjusting the Monitor Display

Every time the ambient light changes, adjust the contrast and brightness of the monitor display.

To adjust the contrast and the brightness:

1. Press the **Setup** key.
2. Click the **System** tab.
3. Click **Monitor Adjust**.
4. Follow the instructions on the screen.

- To adjust the monitor brightness, press the + key or the - key below the  brightness symbol on the front of the monitor.
- To adjust the monitor contrast, press the + key or the - key below the  contrast symbol on the front of the monitor.



Changing the Tint of the Monitor

You can change the tint of the monitor. You have two options:

- Color 1: Bluish hue
- Color 2: Grayish hue

To view the current monitor tint setting, simultaneously press the + key and the - key below the brightness symbol on the front of the monitor:



The monitor tint setting (**Color 1** or **Color 2**) is displayed on the screen.

To change the tint of the monitor, press the + key and the - key again while the current monitor tint setting is still displayed.

Turning Your System On or Off

To turn your system on or off, press the On/Off button under the floppy disk drive.

Caution: Do not unplug the system from the wall until the system turns off completely.

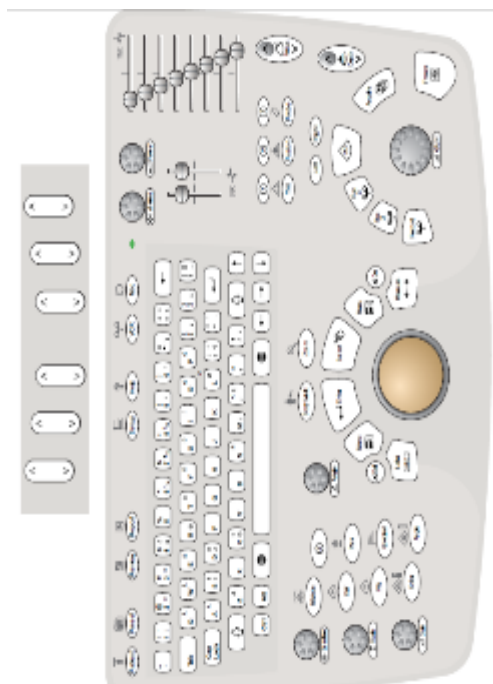
If you unplug the system before the system turns off completely, you will have to wait longer than usual to use your system the next time you turn it on. Some information

on the system may also be corrupted.

System Control Panel

About the System Control Panel

The system control panel is the horizontal surface that contains keys that you press, rotary controls that you turn, and slide controls that you move left and right or up and down. The keys, the rotary controls, and the slide controls are grouped with other controls with related functions. For instance, the Doppler controls are grouped in the lower left corner.



2D

Press the **2D** key to exit the current imaging mode or application and return to 2D Mode. The previous 2D Mode settings are restored

2D GAIN

Turn the 2D **GAIN** rotary control to adjust the gain, or overall brightness, of a 2D or M Mode image. The 2D **GAIN** rotary control is located under the **2D** key and is labeled "**GAIN**."

Angle

In PW Doppler, an arrow, called the angle-to-flow arrow, appears on the imaging screen along with the Doppler cursor line. Use the **Angle** rotary control to position the angle-to-flow arrow parallel to and in the same direction as the blood flow.

Baseline

In PW and CW Doppler, turn the **Baseline** rotary control to adjust the zero baseline position in the Doppler spectral trace.

In Color Mode, turn the **Baseline** rotary control to shift the color map to unwrap aliased flow and display more hemodynamics.

In Color Power Angio, turn the **Baseline** rotary control to adjust the amplitudes displayed.

Body Mark

Press the **Body Mark** key to display the body marker soft keys and choose a body marker to place on the imaging screen

Color

Press the **Color** key to enter Color Mode or to add color information to the reference image in PW Doppler, CW Doppler, or M Mode.

CW

In a cardiac preset, press the **CW** key to display the CW spectral trace.

In a non cardiac preset, press the **CW** key to enter CW Preview, so that you can position

the CW reference line. Press the **CW** key again to display the CW spectral trace

Depth

Press the up or the down arrow on the **Depth** key to increase or decrease the distance from the face of the transducer to the deepest point in the displayed image. The current imaging depth is displayed on the right side of the imaging screen.

Doppler Gain

In PW and CW Doppler, turn the Doppler **Gain** rotary control to adjust the brightness of the spectral display. Adjusting the Doppler **Gain** also affects the volume of the audio output.

Enter

Use the **Enter** key in conjunction with the trackball to click an item or choose a menu option.

Focus

Press the up or the down arrow on the **Focus** key to move the location of the focal zone or focal zones, the area or areas where the image is most clearly focused.

Freeze

Press the **Freeze** key to freeze a live image and initiate Quick Review, which allows you to scroll through the frames using the trackball.

Keyboard

Use the keyboard to type information into fields and to type labels, titles, and Quick Text onto the imaging screen

M Mode

In a cardiac preset, press the **M Mode** key to display the M Mode trace.

In a non cardiac preset, press the **M Mode** key to enter M Mode Preview.

Press the **M Mode** key again to display the M Mode trace.

Use the **Next** soft key to display the second level of soft keys..

Patient

Press the **Patient** key to open the **Patient Identification** window in which you can create

a new patient study, edit information about the current patient, or restart a patient study that was started earlier the same day.

Probe

Press the **Probe** key to activate the next connected transducer going from top to bottom.

The name of the current transducer appears on the right side of the imaging screen. The **Probe** key has no effect if only one transducer is connected.

PW

Press the **PW** key to enter PW Doppler Preview, so that you can position the Doppler sample volume gate. Press the **PW** key again to display the PW spectral trace.

Report

Press the **Report** key to open the report for the current study

Trackball

Use the trackball to move and resize objects on the imaging screen.

Zoom

Press the **Zoom** key to place a zoom box on an image. Press the **Zoom** key again to magnify the area in the zoom box.

State of the art Ultrasound.

