

Lab (3)

Kingdome: Protista

1. K: Protista

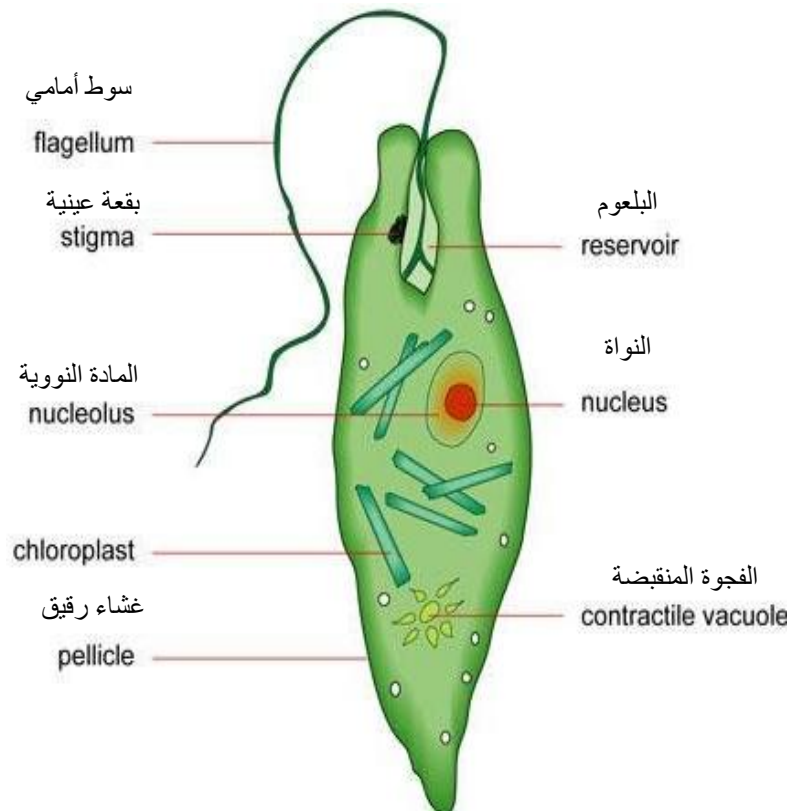
D: Euglenophyta

Cl: Euglenophyceae

Or: Euglenales

F: Euglenaceae

Ex: Euglena sp.



2. K: Protista

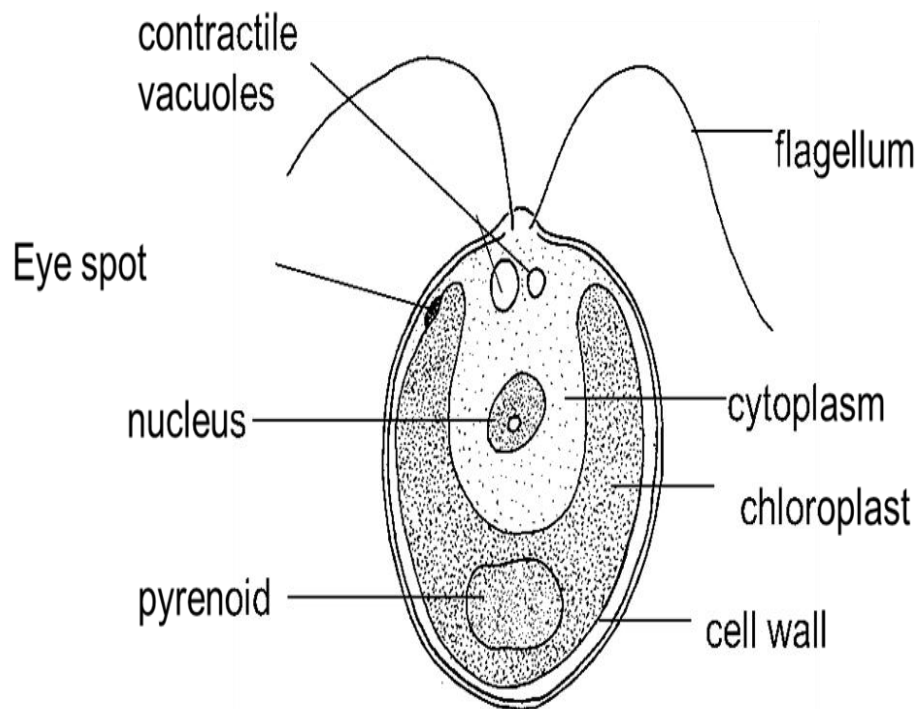
D: Chlorophyta

Cl: Chlorophyceae

Or: Volvocales

F: Chlamydomonaceae

Ex: Chlamydomonas sp.



3. K: Protista

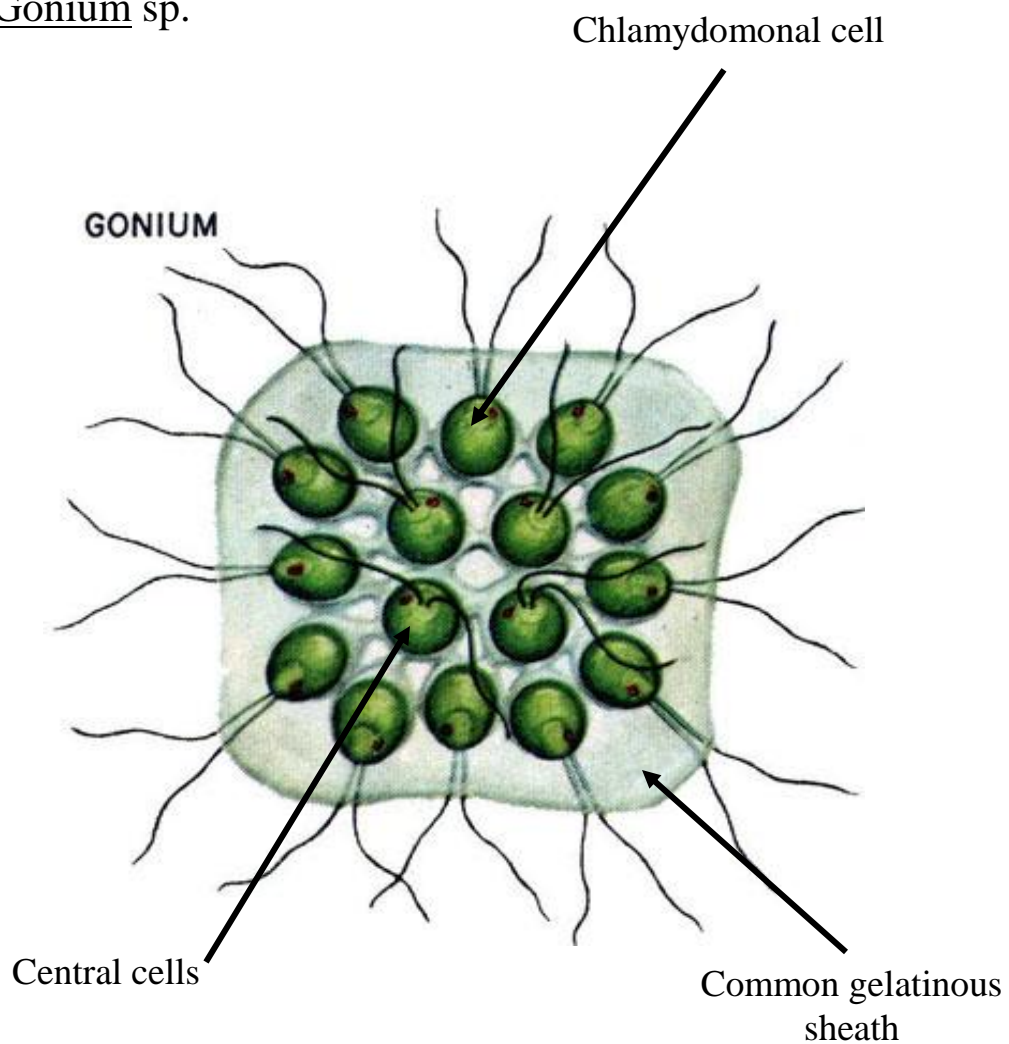
D: Chlorophyta

Cl: Chlorophyceae

Or: Volvocales

F: Volvocaceae

Ex: Gonium sp.



4. K: Protista

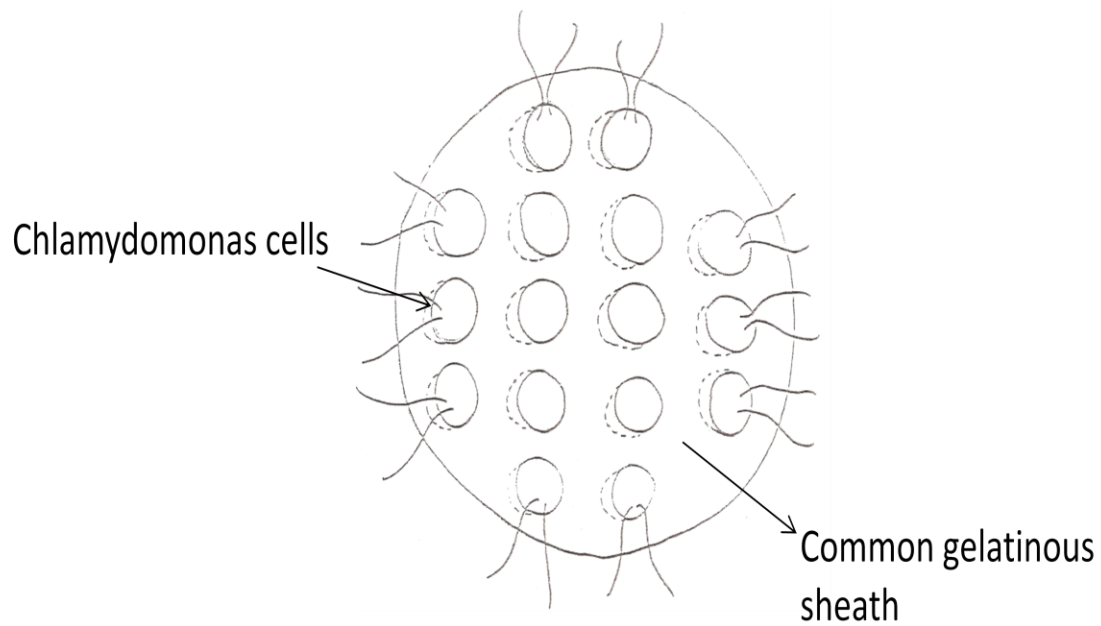
D: Chlorophyta

Cl: Chlorophyceae

Or: Volvocales

F: Volvocaceae

Ex: Eudorina sp.



5. K: Protista

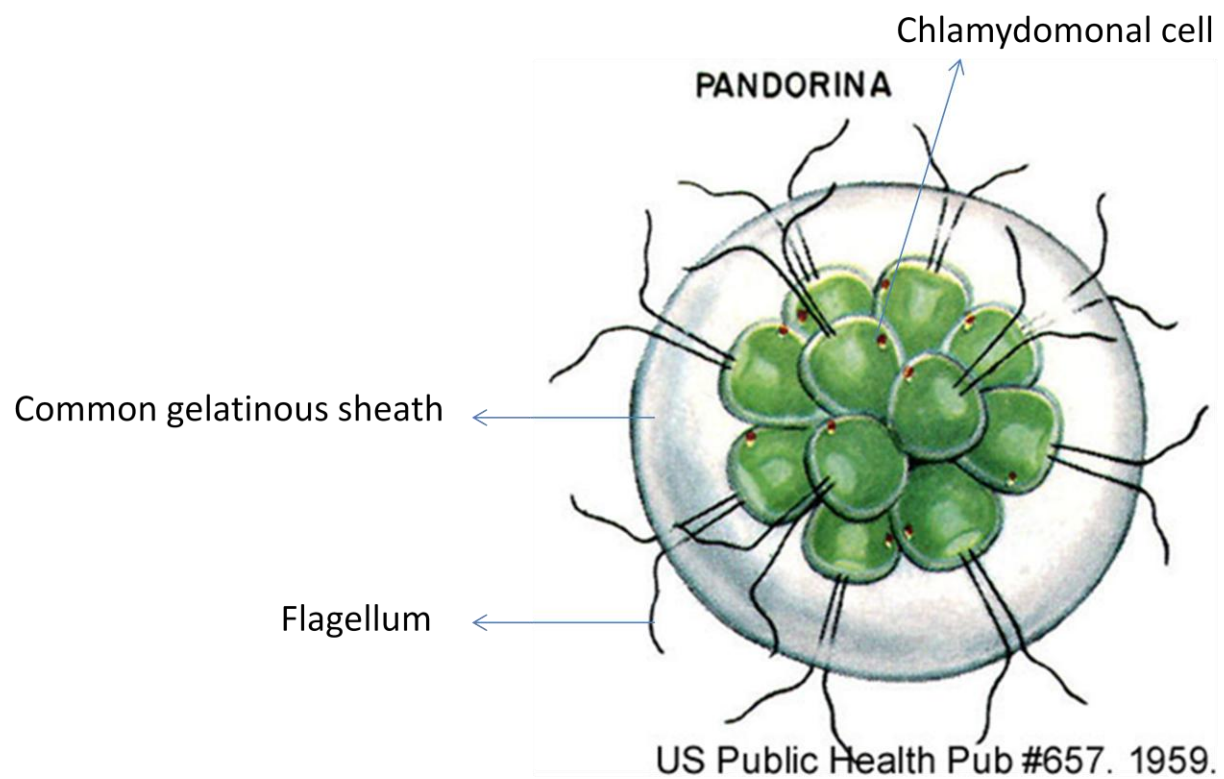
D: Chlorophyta

Cl: Chlorophyceae

Or: Volvocales

F: Volvocaceae

Ex: Pandorina sp.



6. K: Protista

D: Chlorophyta

Cl: Chlorophyceae

Or: Volvocales

F: Volvocaceae

Ex: Volvox sp.

