

Upper Limb

Upper Limb

Divided into 4 groups :

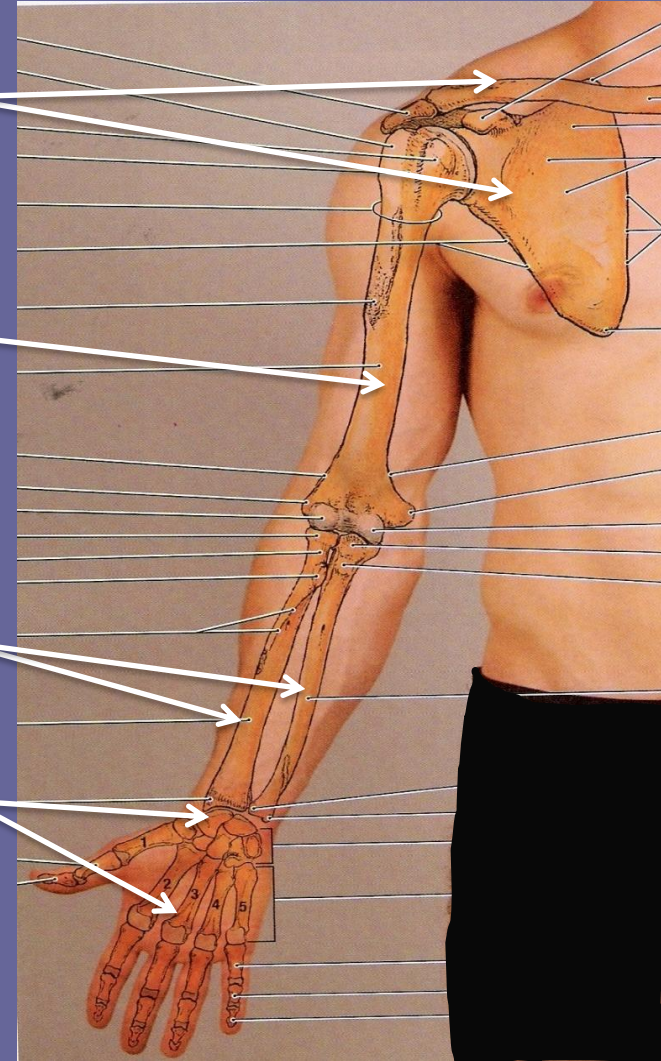
1. Hand & Wrist .
2. Forearm .
3. Humerus .
4. Shoulder .

Shoulder

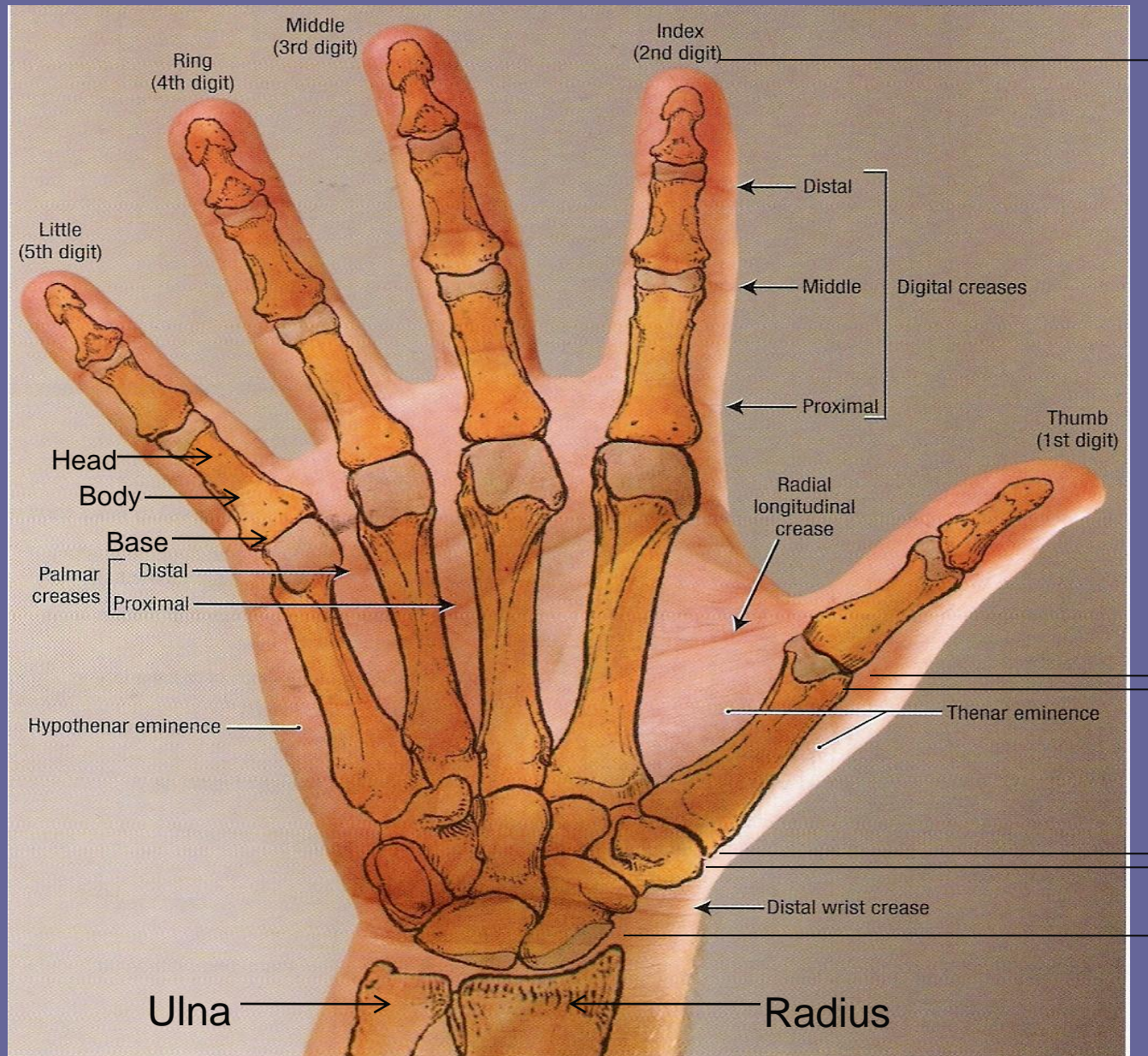
Humerus

Forearm

Hand & Wrist



1- Hand & Wrist



Phalanges 14

Metacarpals 5

Carpals 8

Total 27

Lt Hand PA





Scaphoid

Lunate

Triquetrum

Pisiform

Trapezium

Trapezoid

Capitate

Hamte

H

C

T

T

T

S

L

Articulate with 2nd MC

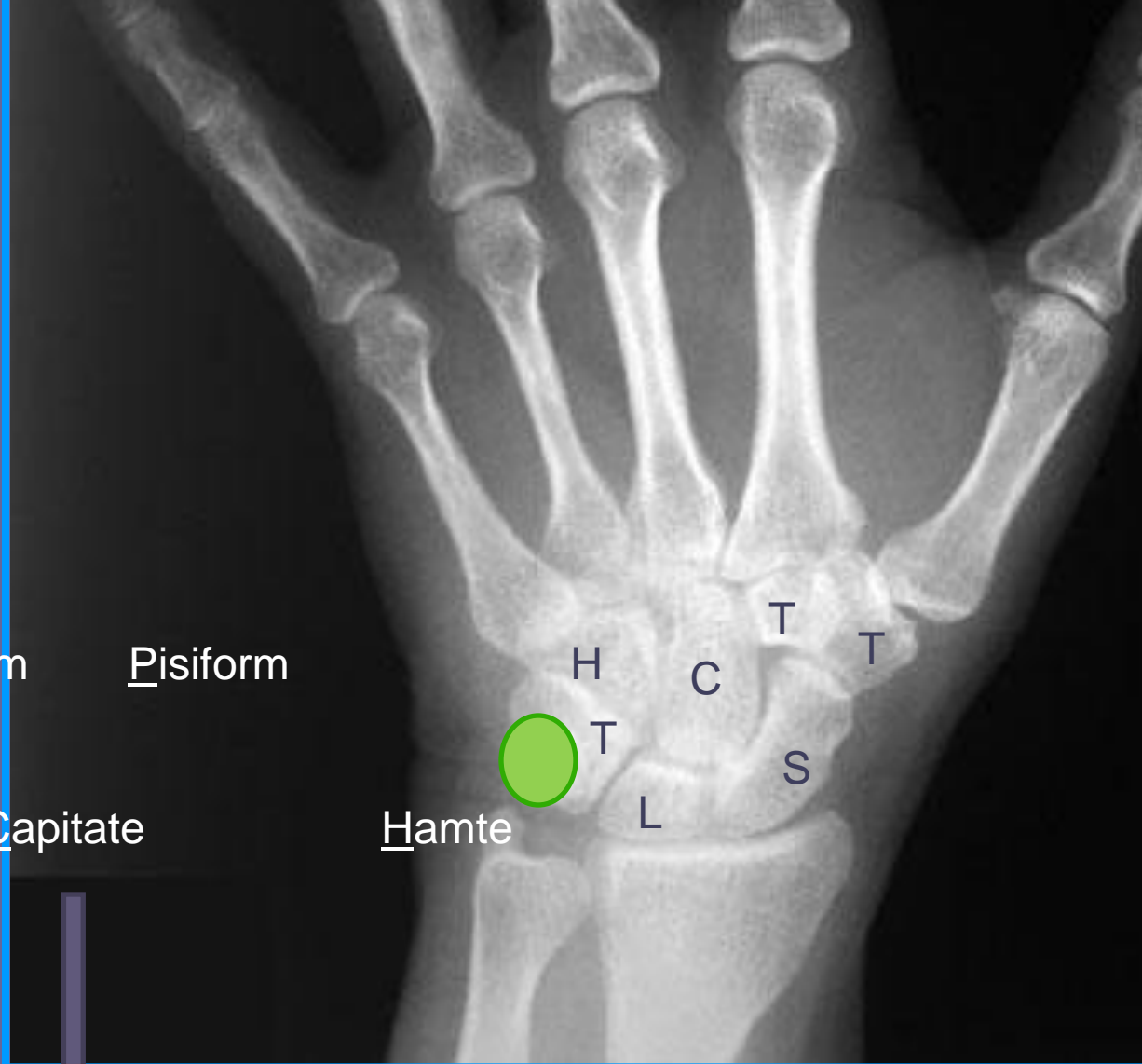
Articulate with thumb

Capital letter

→ big

Capitate bone

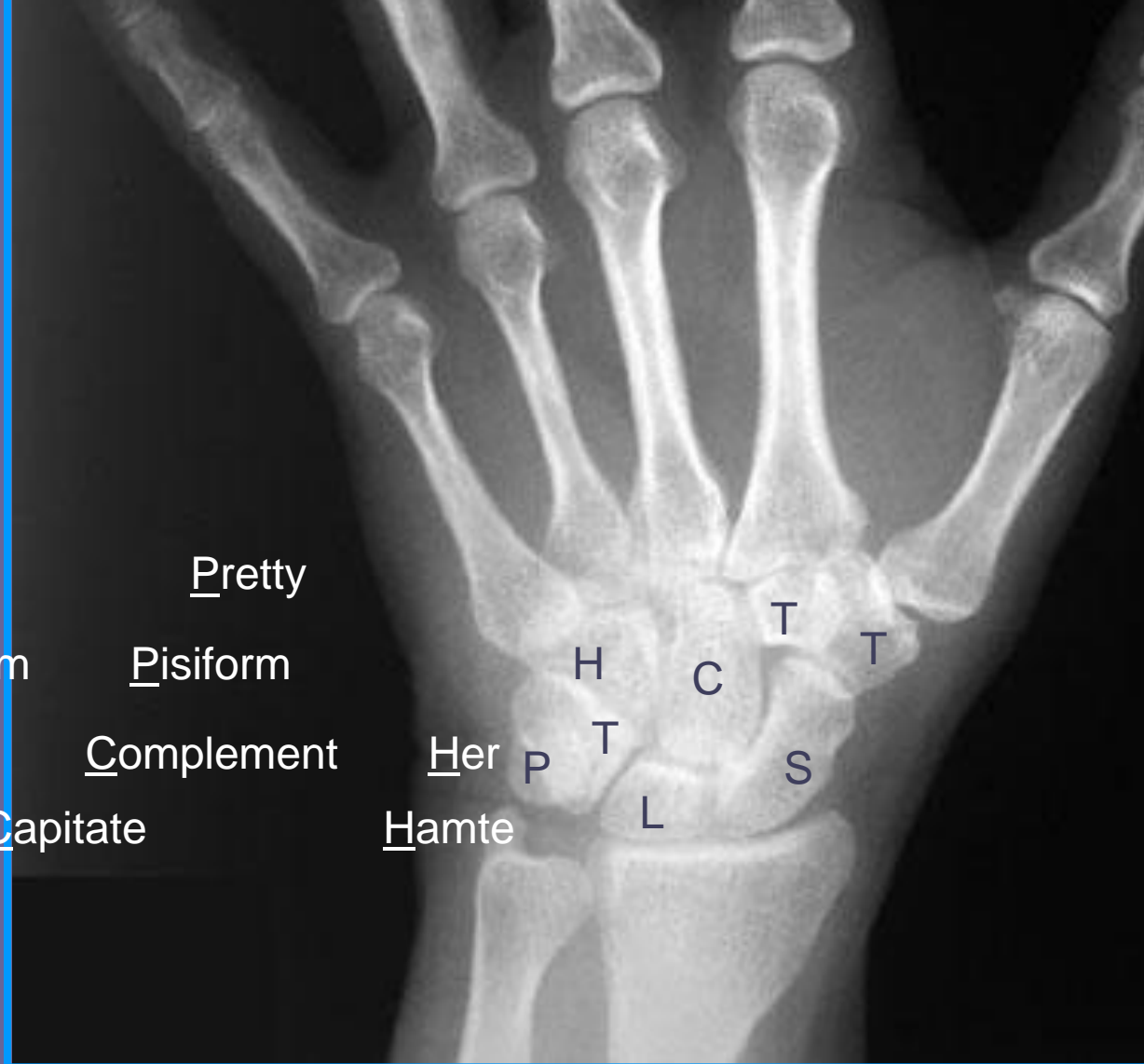
→ biggest carpal bone



Susan Looks Too Pretty
Try To Complement Her

Susan Looks Too
Scaphoid Lunate Triquetrum
Try To
Trapezium Trapezoid Capitate

Pretty
Pisiform
Complement
Hamte



When identifying •
joints & phalanges
,remember to mention
(prox or mid or
distal),the specific_
hand & digit

Hand, Oblique view



- A. Thumb 1st Finger(digit)
- B. Index 2nd Finger(digit)
- C. Middle 3rd finger(digit)
- D. Ring 4th finger (digit)
- E. Little 5th finger(digit)

- 1 Distal phalanx of 2nd digit of Rt hand
- 2 Middle phalanx of 2nd digit of Rt hand
- 3 Proximal phalanx of 2nd digit of Rt hand
- 4 distal phalanx of 1st digit of Rt hand
- 5 proximal phalanx of 1st digit of Rt hand
- 6 Sesamoid bones

7 Distal interphalangeal joint of 5th digit of Rt hand

8 Proximal interphalangeal joint of 5th digit of Rt hand

9 5th Metacarpophalangeal joint of Rt hand

10 5th Carpometacarpal joint of Rt hand

11 Triquetrum

19 Radius

20 Ulna

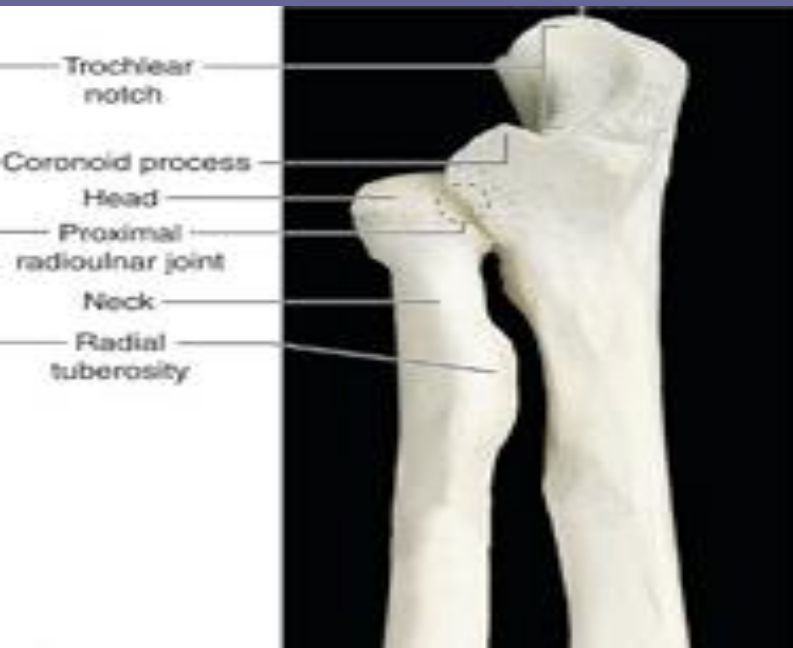
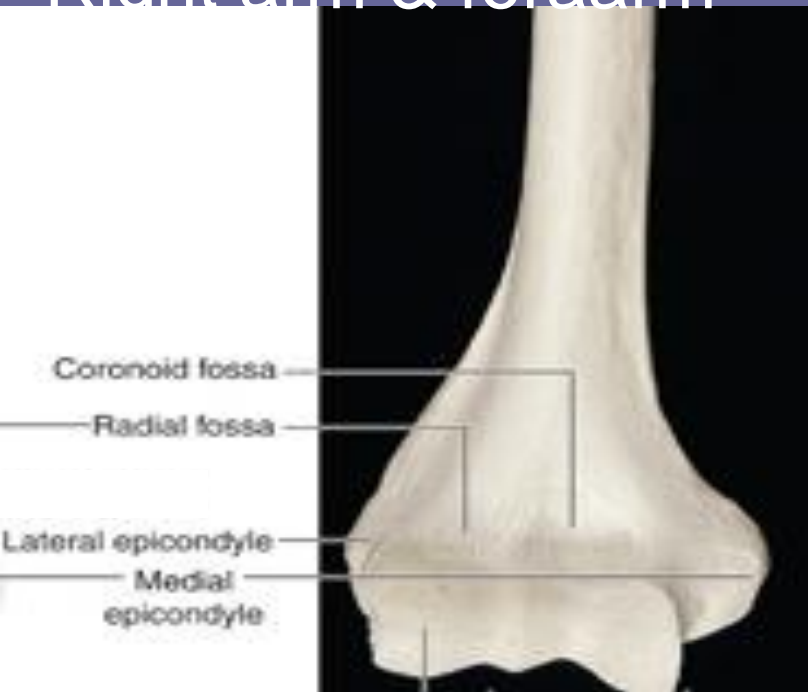


Wrist

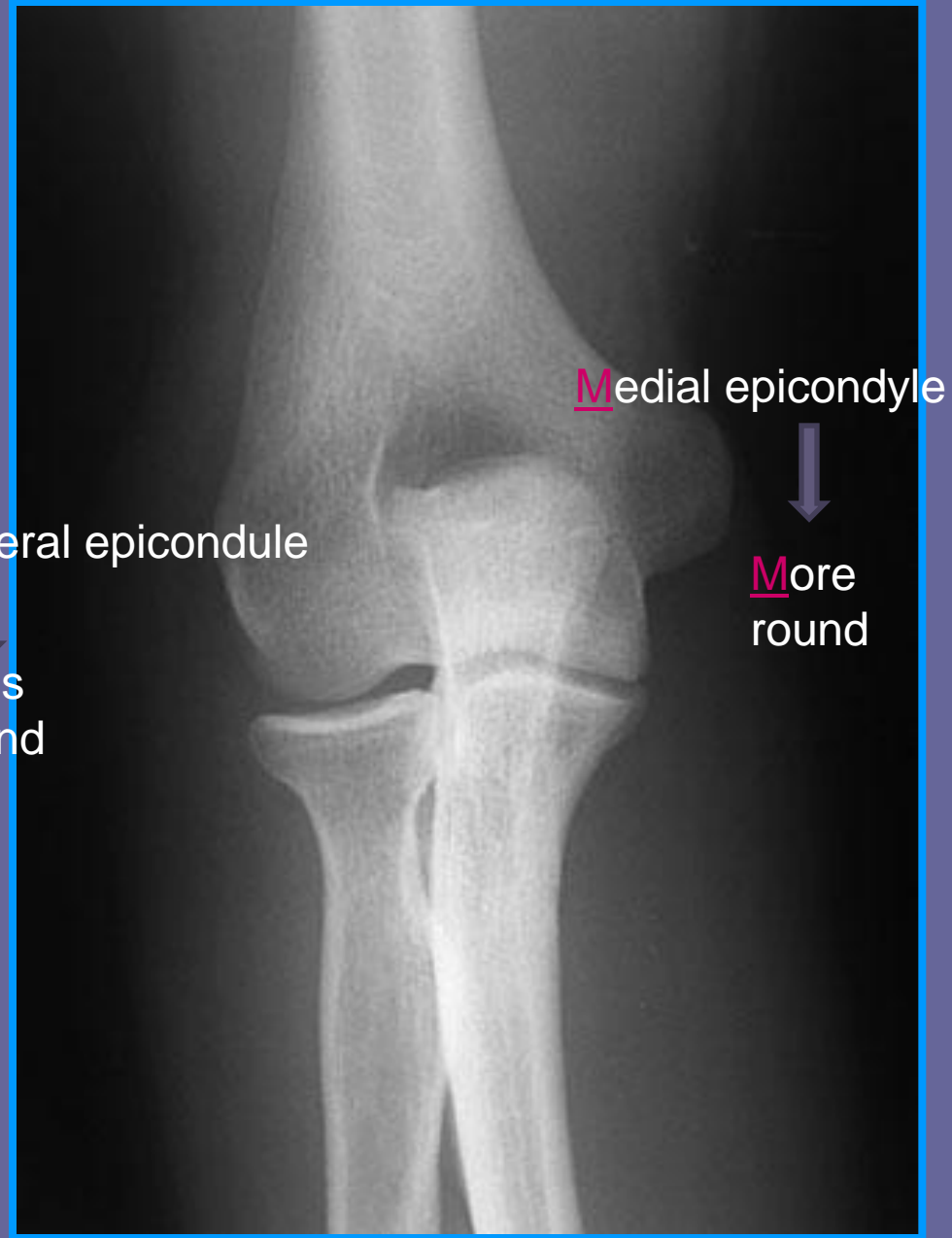
Lateral view

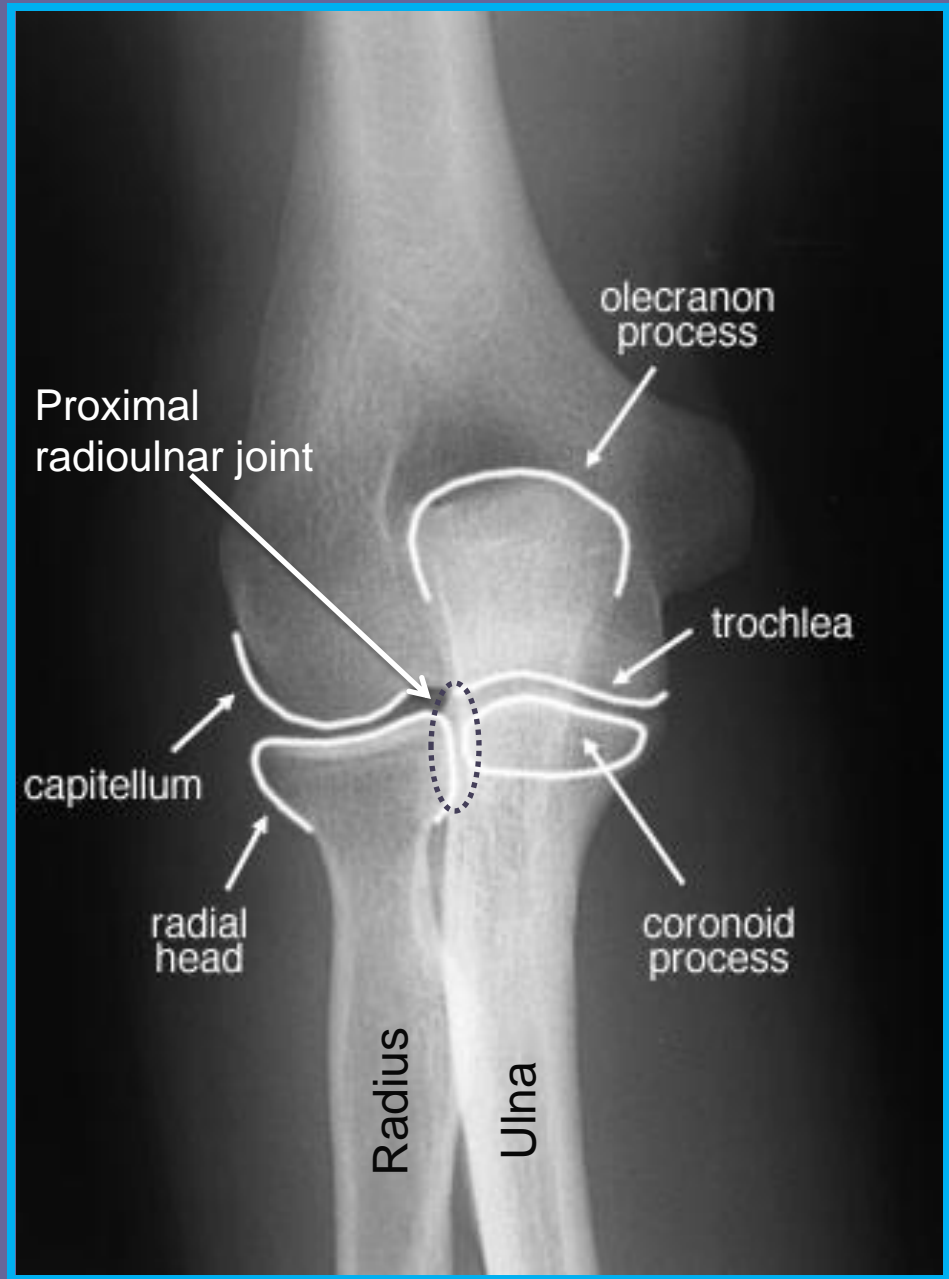
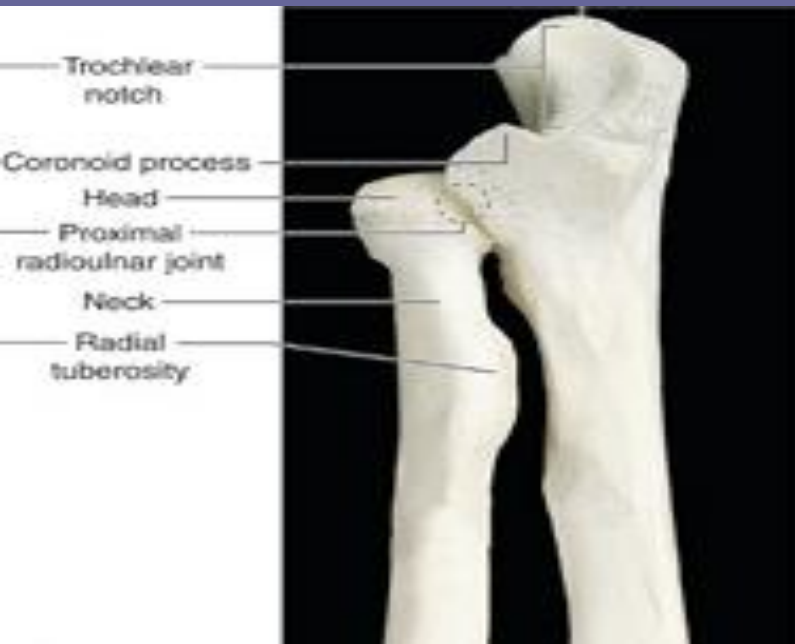
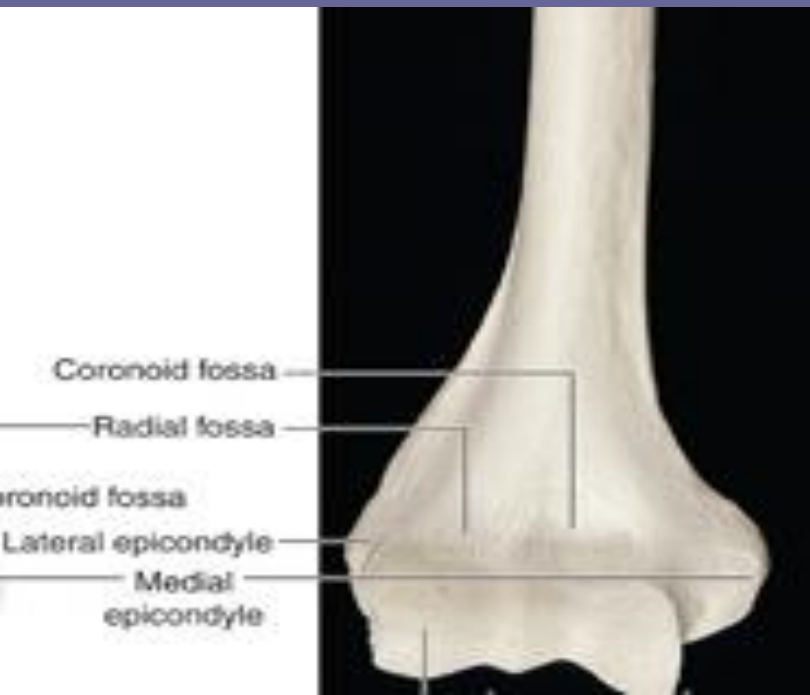


Right arm & forearm

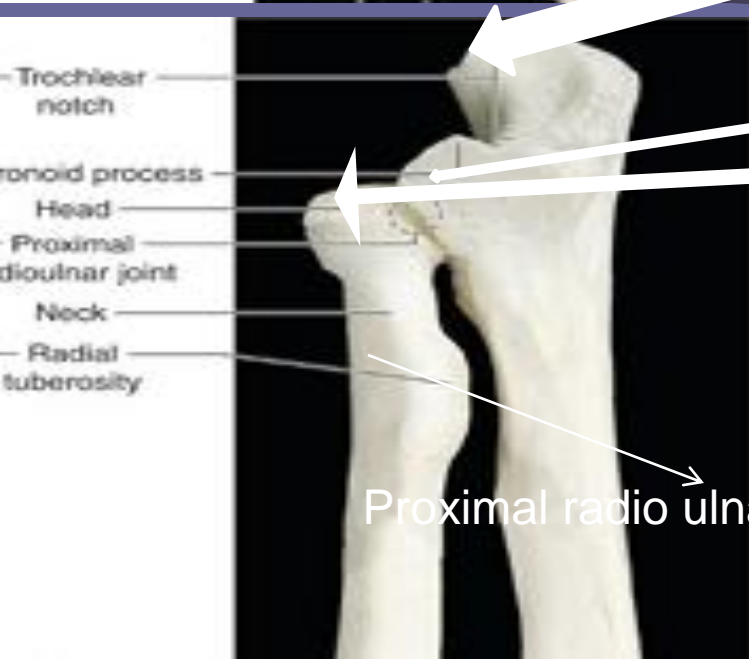
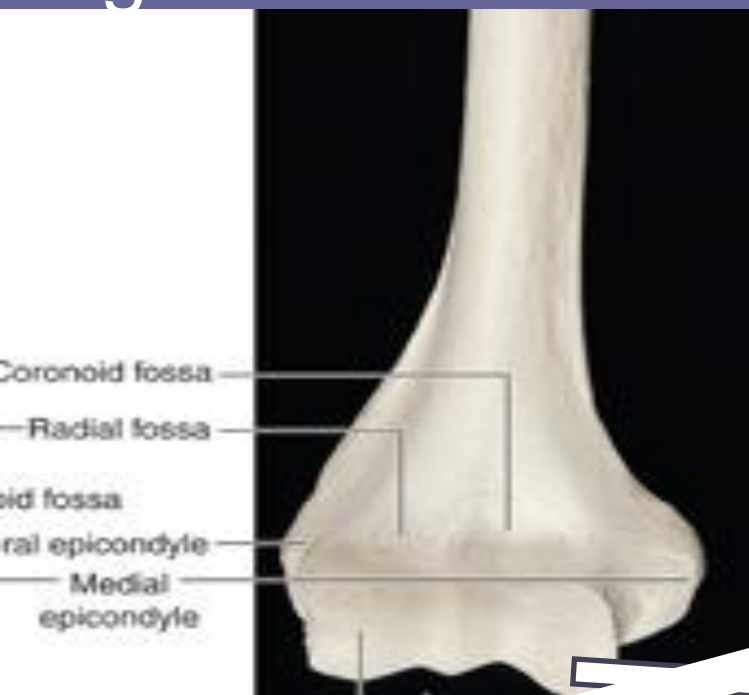


Lateral epicondyle
↓
Less round

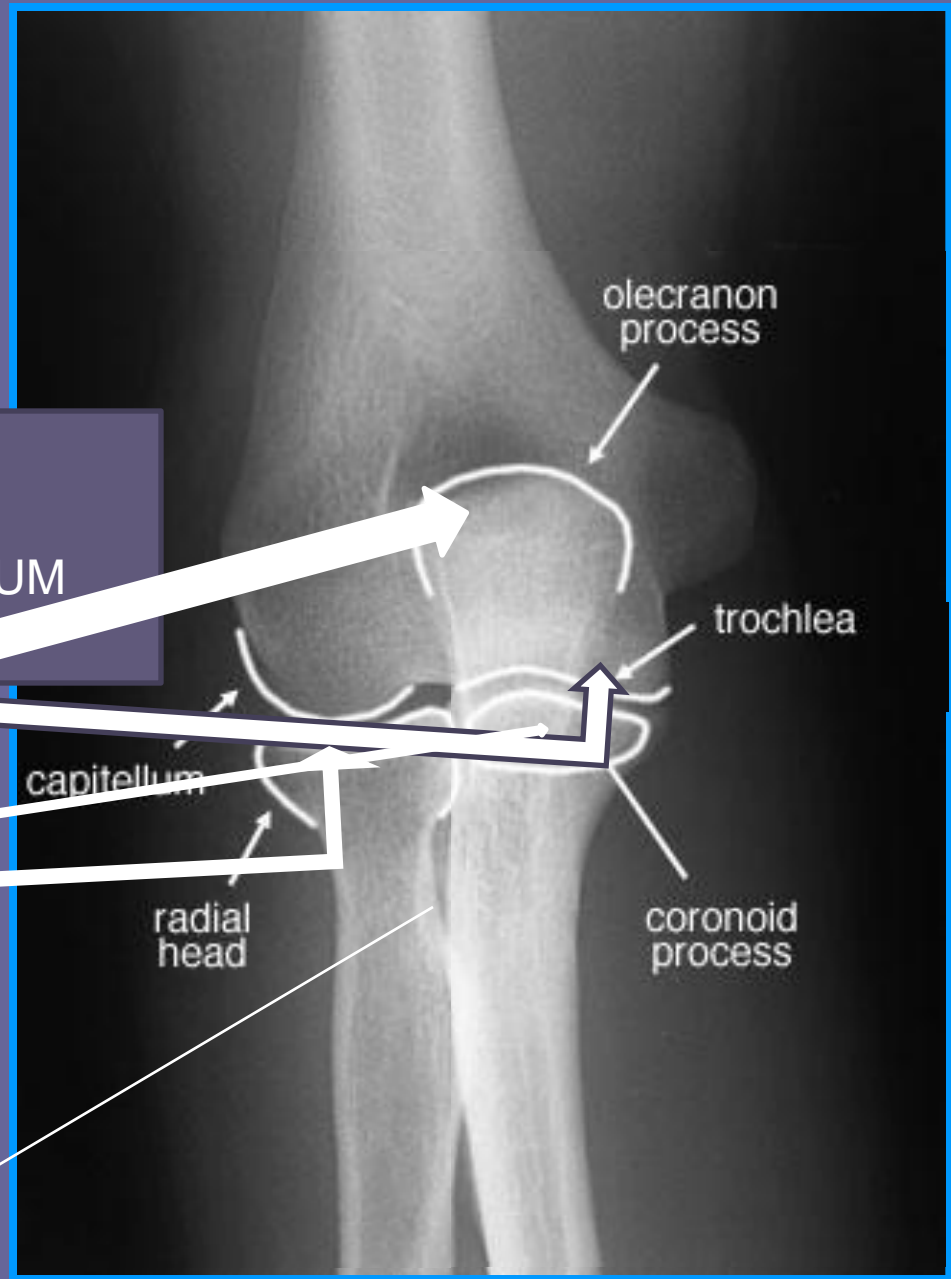




Right arm & forearm



AP
CAPITULUM



Elbow, Lateral view

