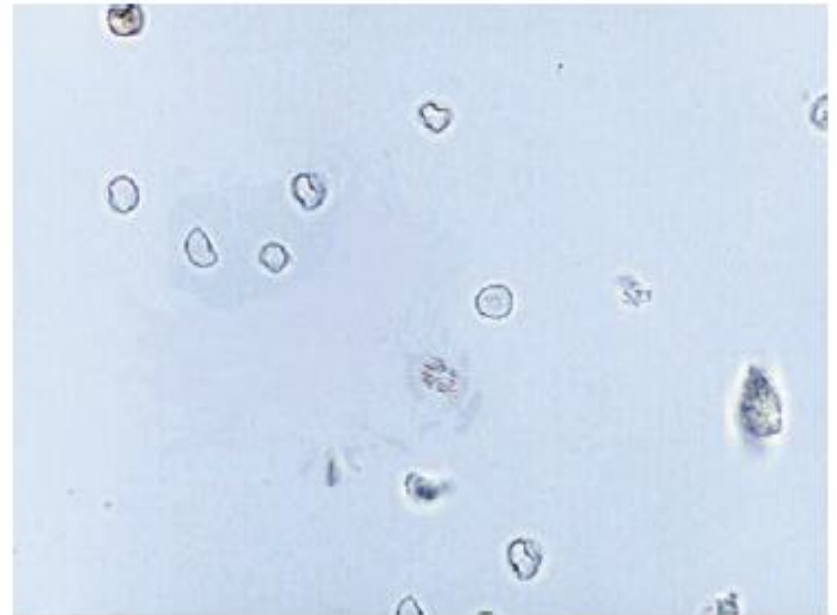
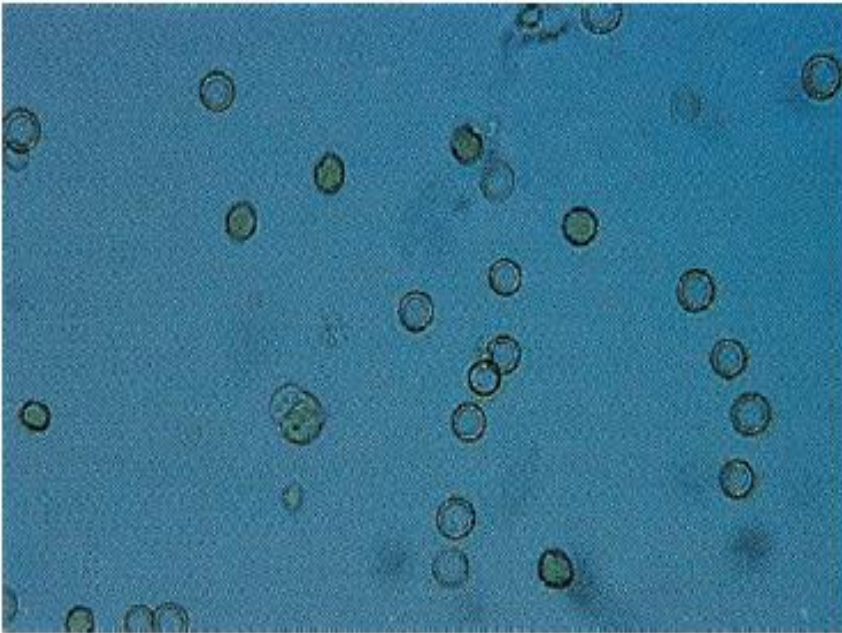


Microscopic examination of Urine

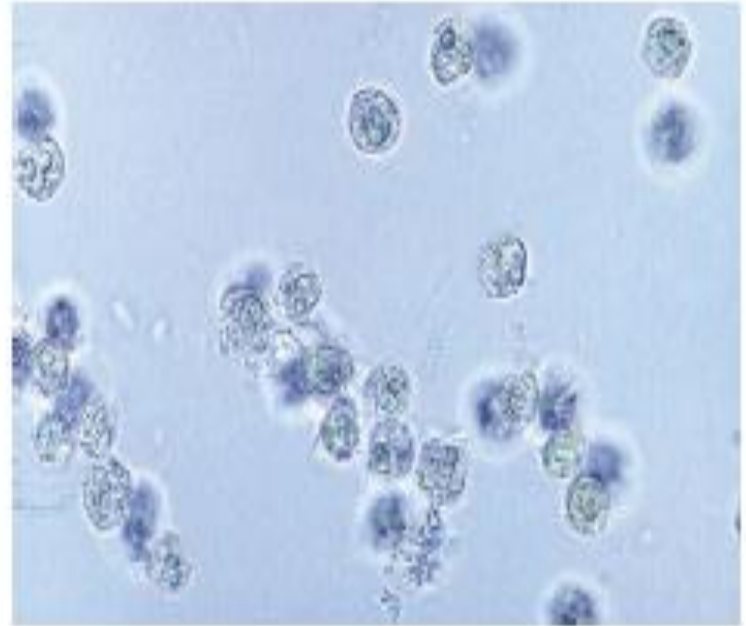
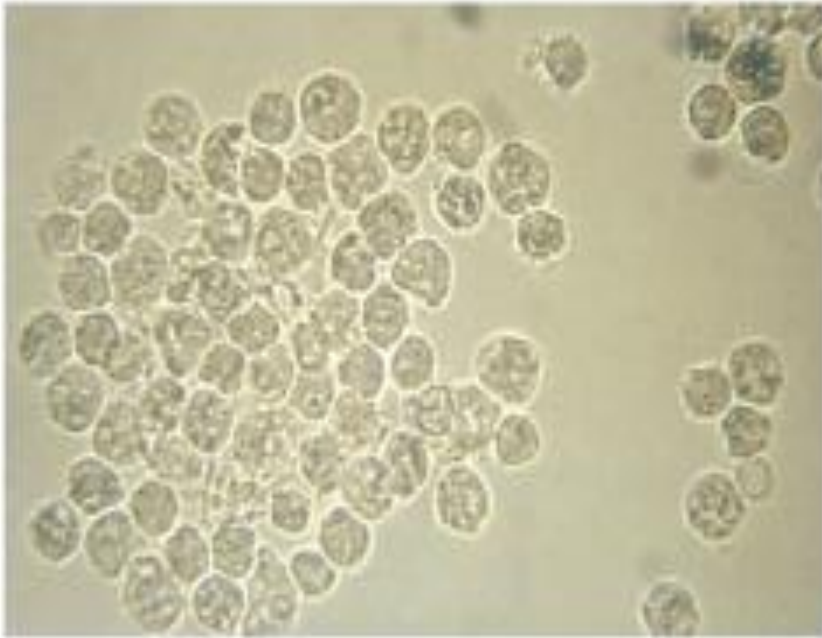
Disclaimer

The images in this presentation found on: Urinalysis and body fluids
(Susan King Strasinger- Marjorie Schaub De Lorenzo) Fifth edition

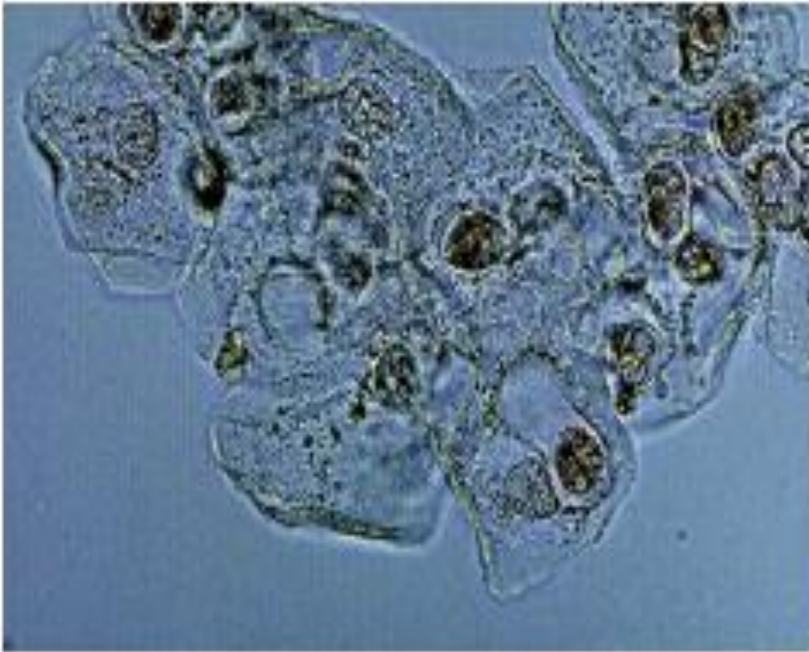
Red Blood Cells



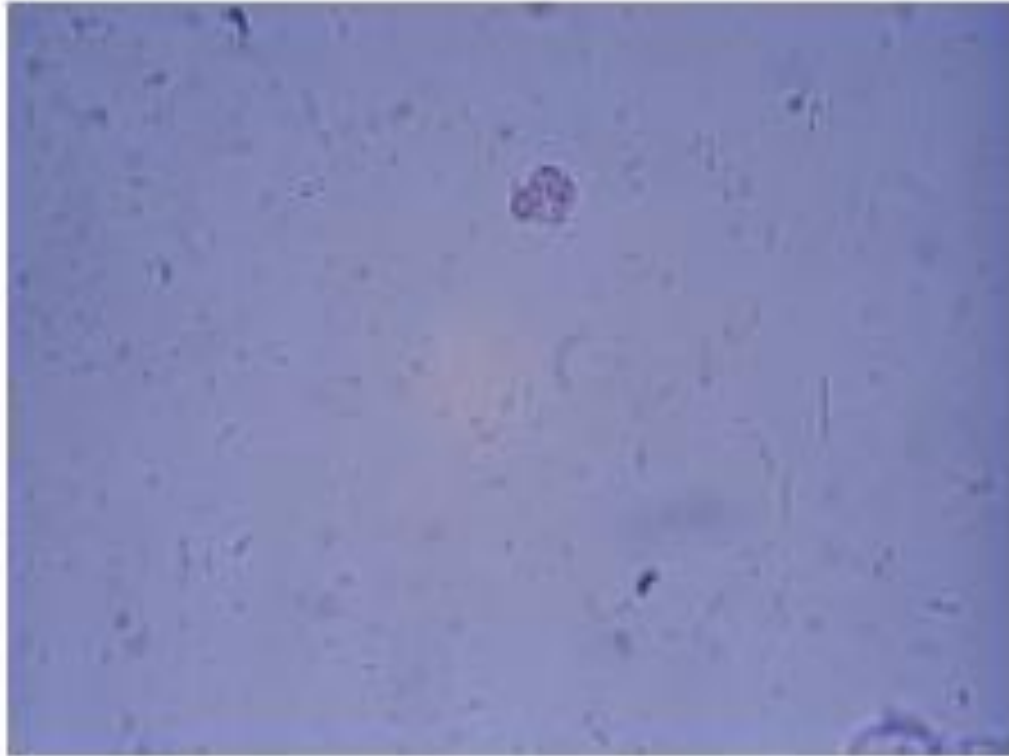
White Blood Cells



Epithelial Cells



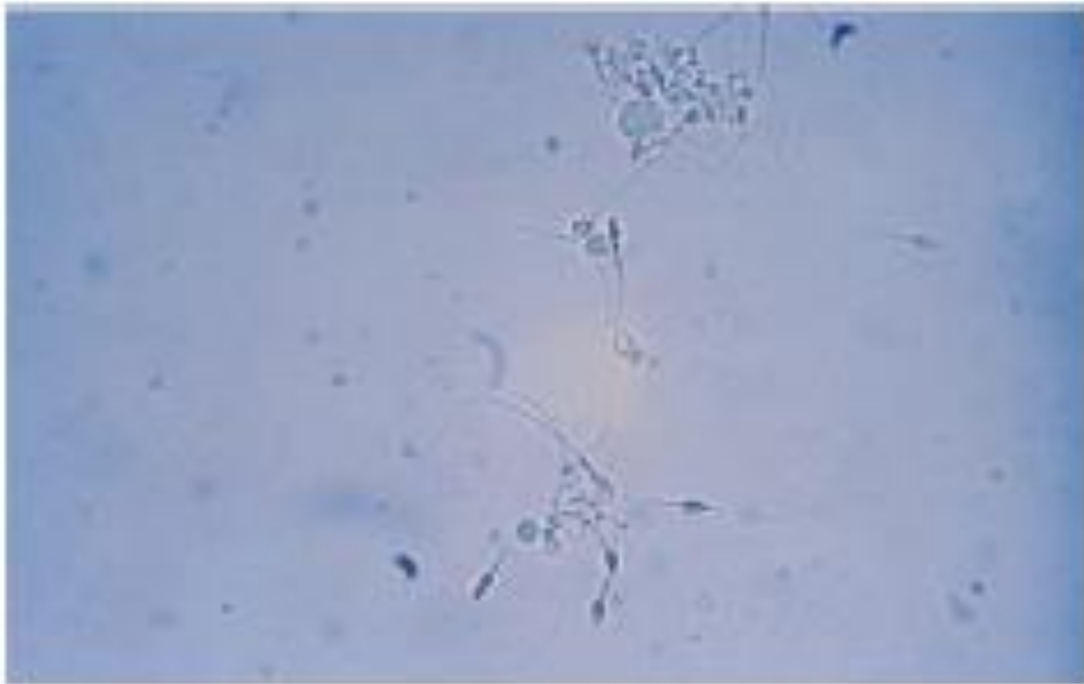
Bacteria



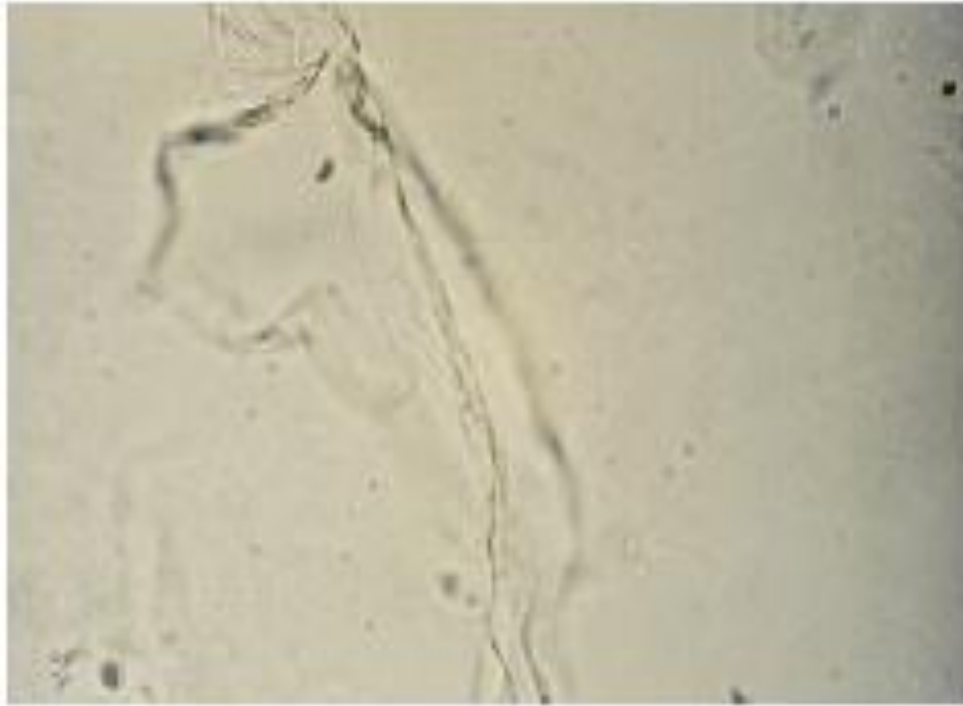
Yeast



Spermatozoa



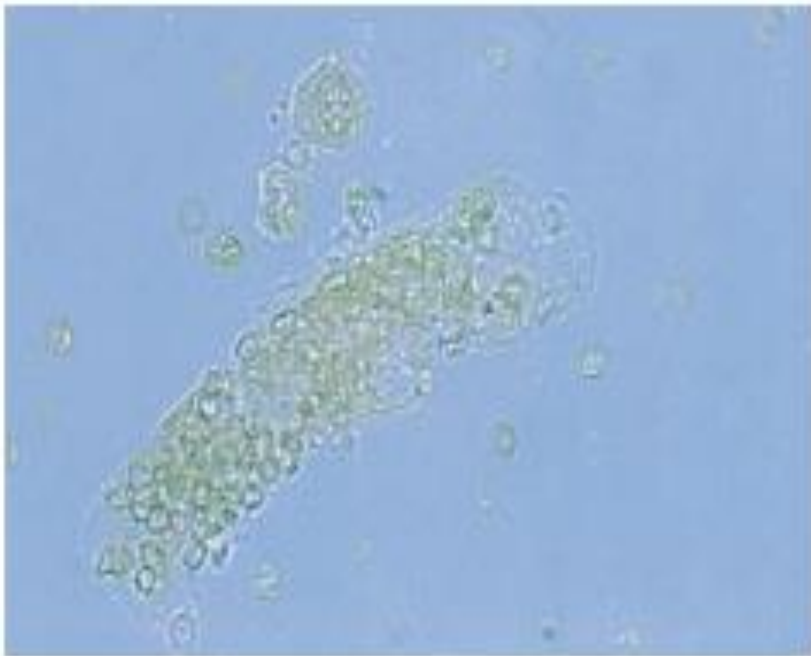
Mucus



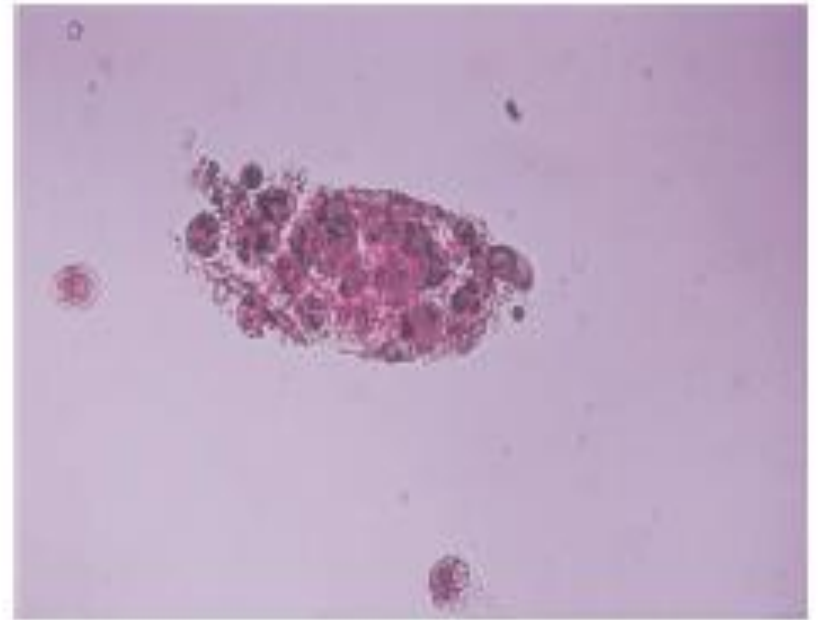
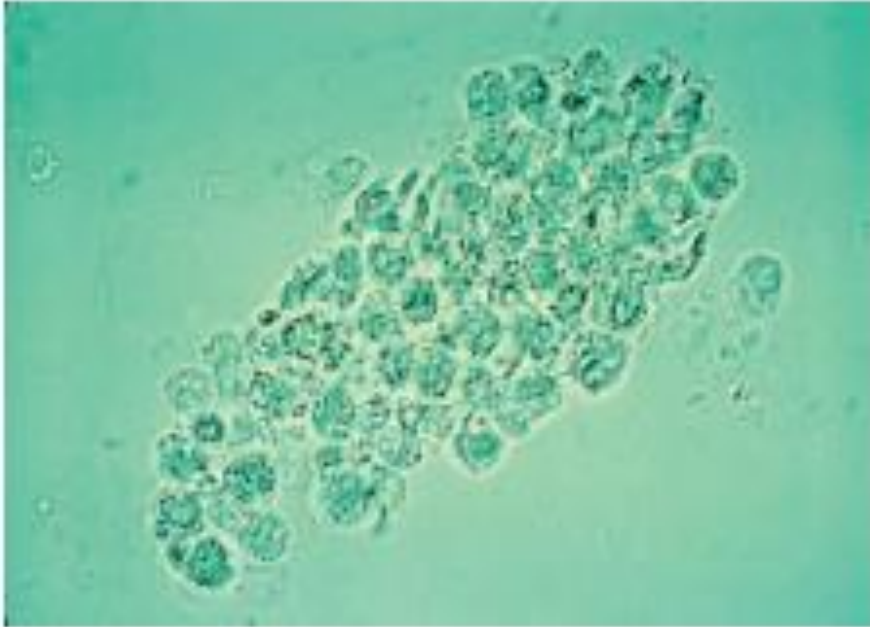
Casts



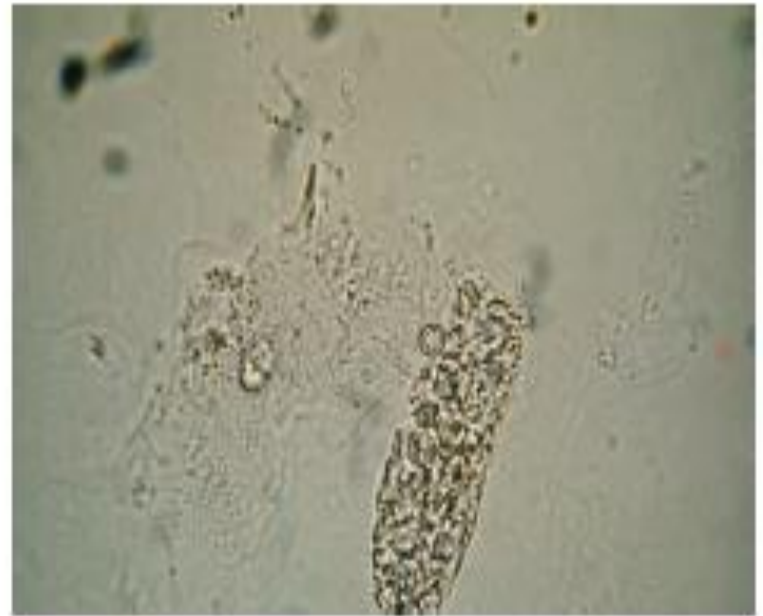
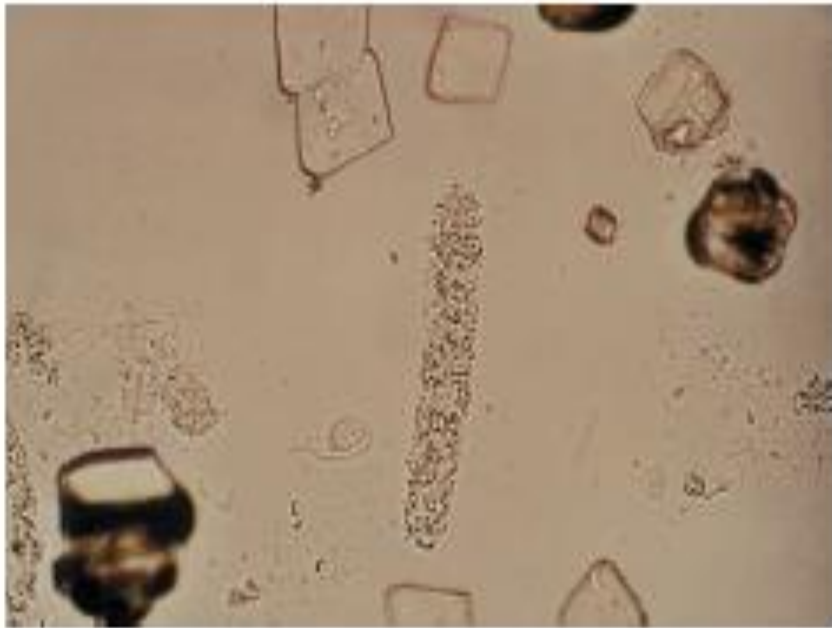
Hyaline Cast



Red Blood Cell Cast

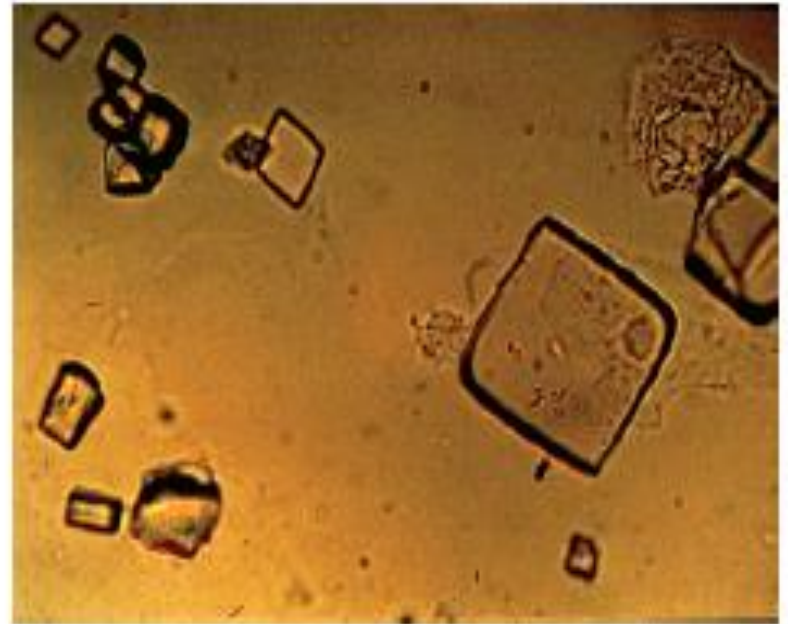


White Blood Cell Cast

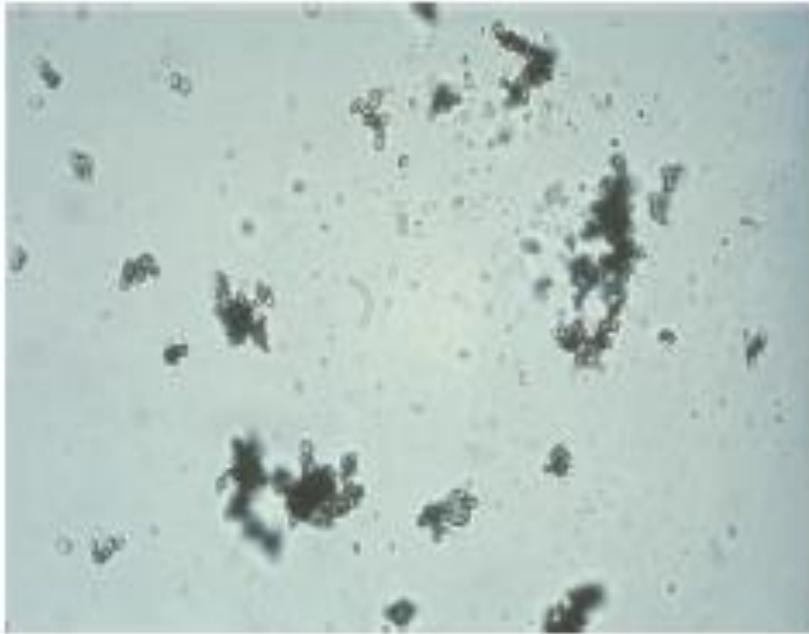


Granular Cast

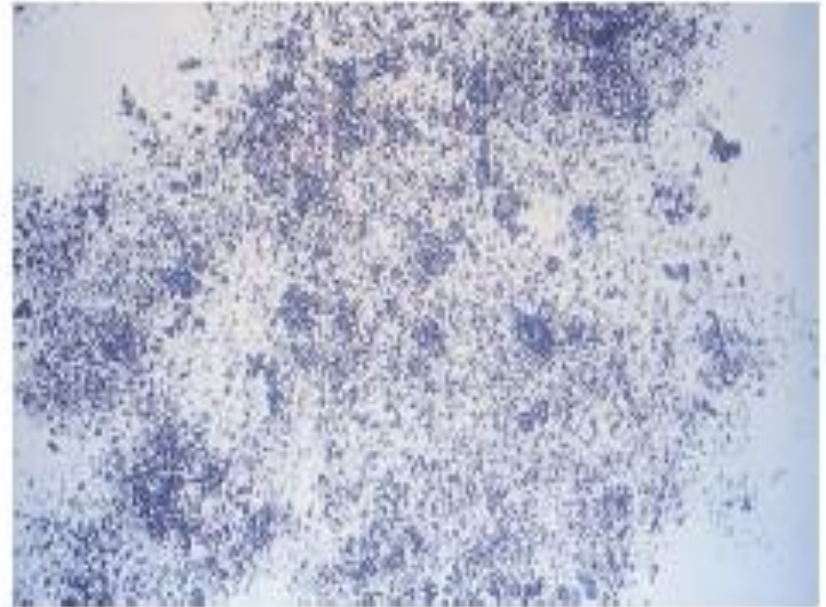
Urinary Crystals



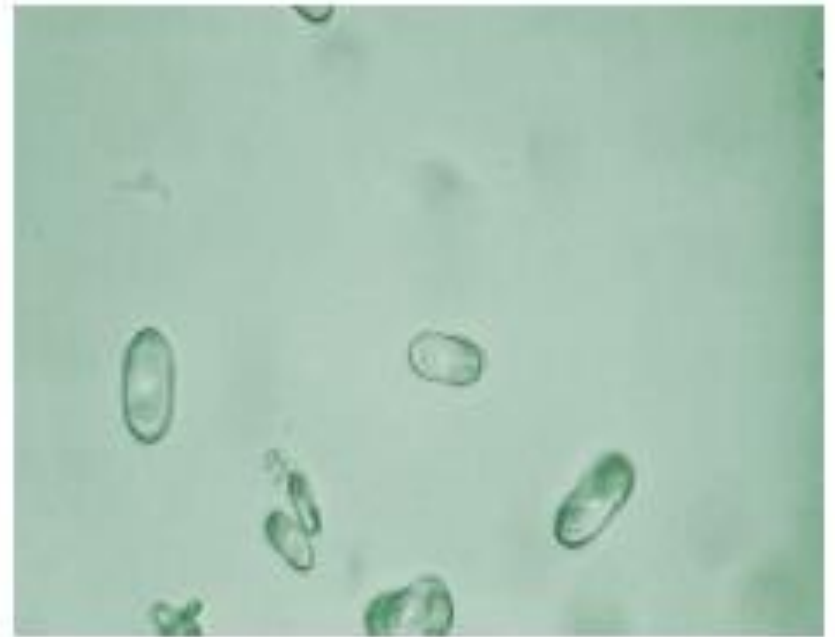
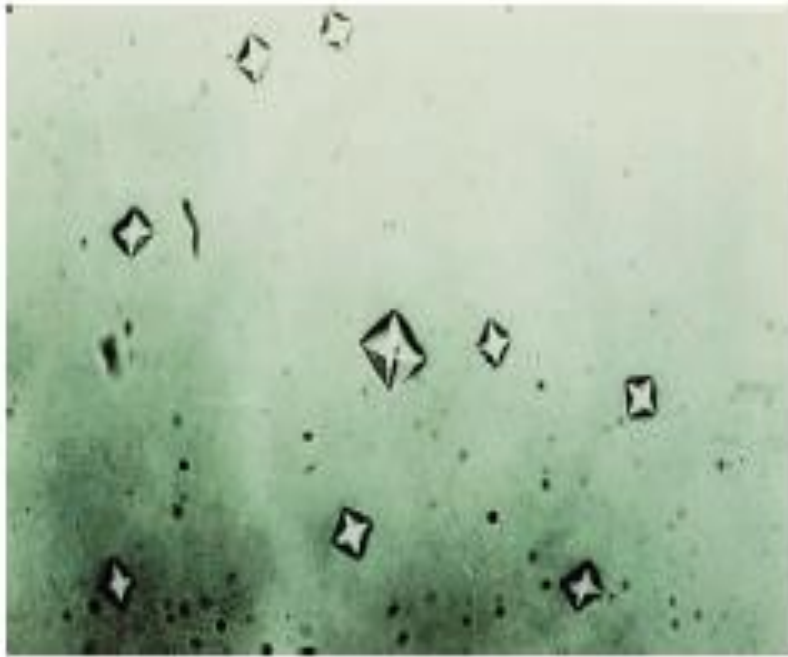
Uric Acid Crystals



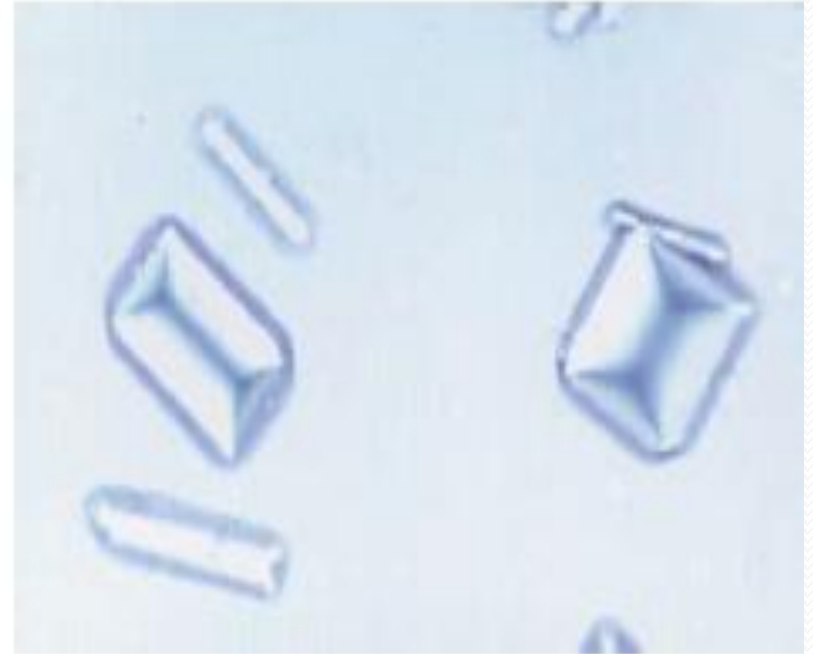
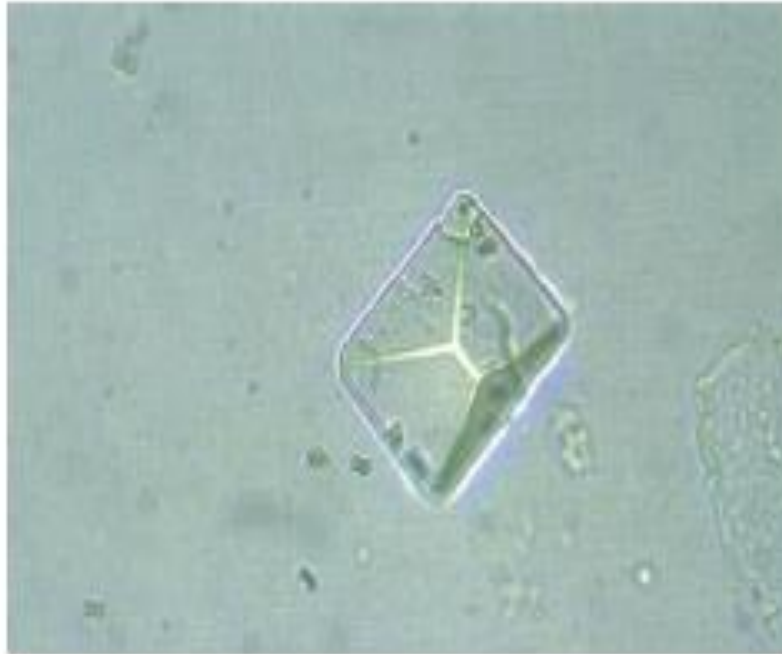
Amorphous Urates



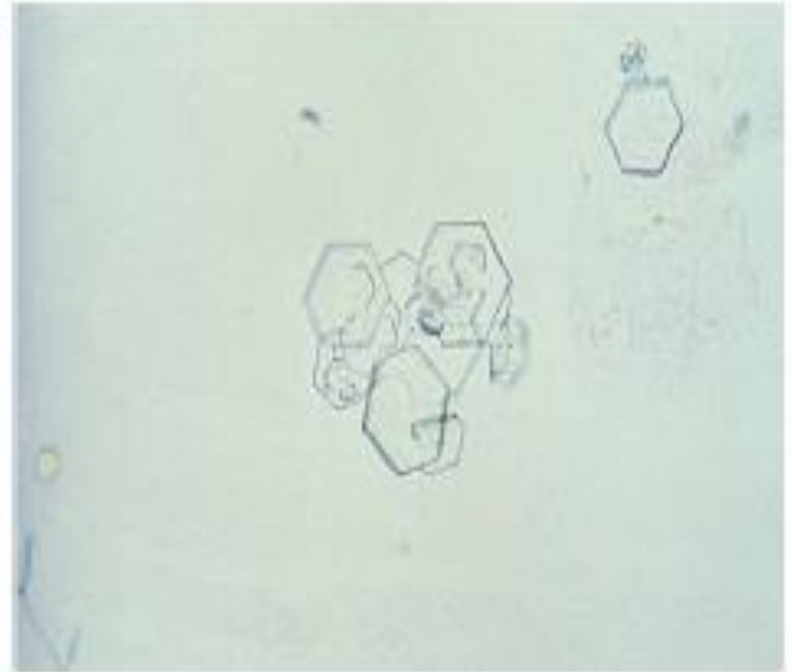
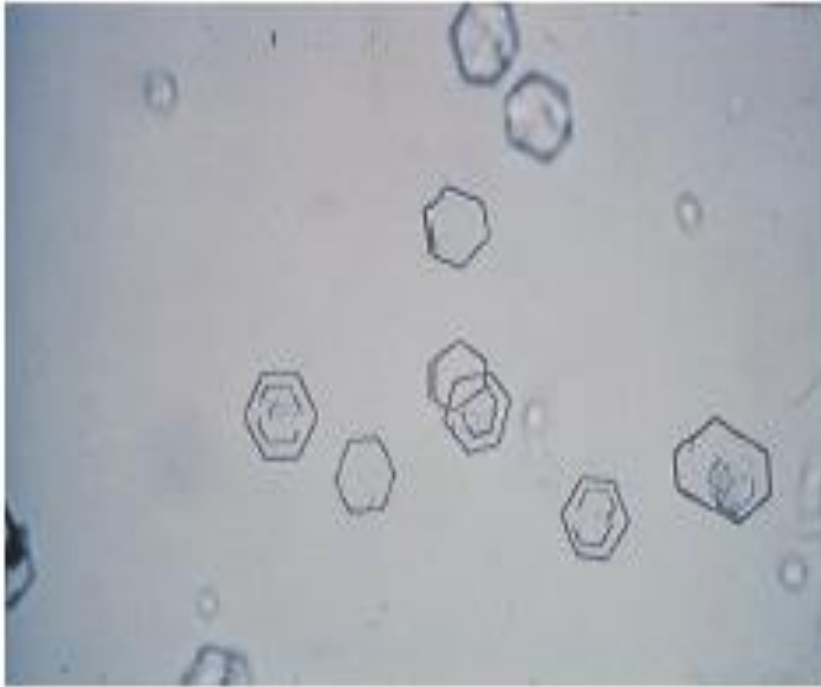
Amorphous Phosphate



Calcium Oxalates



Triple Phosphate



Cystine Crystals



Cholesterol Crystals



Tyrosine Crystals