



332

Ashwag alarfaj

332

practical radiographic technique

Credit hours: **3**

- **LECTURE, HOSPITAL ATTENDANCE & ATTITUDE : 5**
- **LOG BOOK : 13**
- **3 Hospital requests : 2**
- **PRACTECAL EXAME : 40**
- **WRITTEN EXAM : 40**
- **TOTAL = 100**



1- common abbreviations

2- Disease abbreviations

3-Some common words

4- Some common disease /situation

Abbreviation

C/O : complain of

K/O : Known case of

Hx or HO : History or History of

Dx : Diagnosis

PT : Patient

ADM : Admission

AXR : Abdominal X- ray

CXR : Chest X-ray

LMP : Last menstrual period

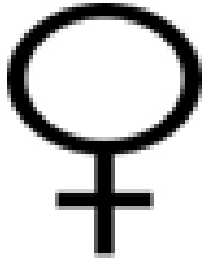
CBC : Complete blood count

WBC : White blood cell

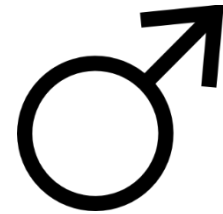
ABC : Air, Breathing and Circulation ,the basic initial checks of casualty condition .

ERPOC/ERPC : evacuation of retained products of conception

Abbreviations



Female



Male



Fracture

Abbreviations

NICU : Intensive care unit

• HDU : High Dependency Unit (intermediate care units)

NICU : Neonatal Intensive Care Unit

NPO : Nothing by mouth .

NIL : Nothing . eg : medical history: NIL /Urine analyses : NIL

CPR : cardiopulmonary resuscitation

*GRF : Glomerular filtration rate

* describes the flow rate of filtered fluid through the kidney , best test to measure your level of kidney function and determine your stage of kidney disease . doctor can calculate it from the results of your blood **creatinine** test, your age, race, gender and other factors .

Diseases Abbreviations

AAA : Abdominal aortic aneurysm (pronounced "triple-A

AV : Arteriovenous OR Atrioventricular

AVM : Arteriovenous malformation

AIDS : Acquired immunodeficiency syndrome

AMI : Acute myocardial infarction

ARF : Acute renal failure

CA : Cancer .

NHL : non Hodgkin's lymphoma

LBP : lower back pain

CVA : cerebrovascular accident

CHF : congestive heart failure

LOC : loss of consciousness or level of consciousness

Disease Abbreviation

HTN : Hypertension or high blood pressure.

OPPOSITE OF HYPOTENSION .

HBV /HCV : Hepatitis B Virus / Hepatitis C-virus .

DM : Diabetes mellitus . often simply referred to as diabetes—is a group of metabolic diseases in which a person has high blood sugar, either because the body does not produce enough insulin, or because cells do not respond to the insulin that is produced. This high blood sugar produces the classical **symptoms of:**

polyuria (frequent urination), polydipsia (increased thirst) and polyphagia (increased hunger).



• **TB** : Tuberculosis (TB) is divided into two categories: pulmonary and extrapulmonary .

IHD : Ischemic heart disease .

SOB : Shortness of breath .

SOL : Space-occupying lesion

SLE : Systemic lupus Erythematosus .

PIVD : Prolapsed Intervertebral disc .

DVT : Deep vein thrombosis ,

ICP : Intracranial pressure .

AVM



TB

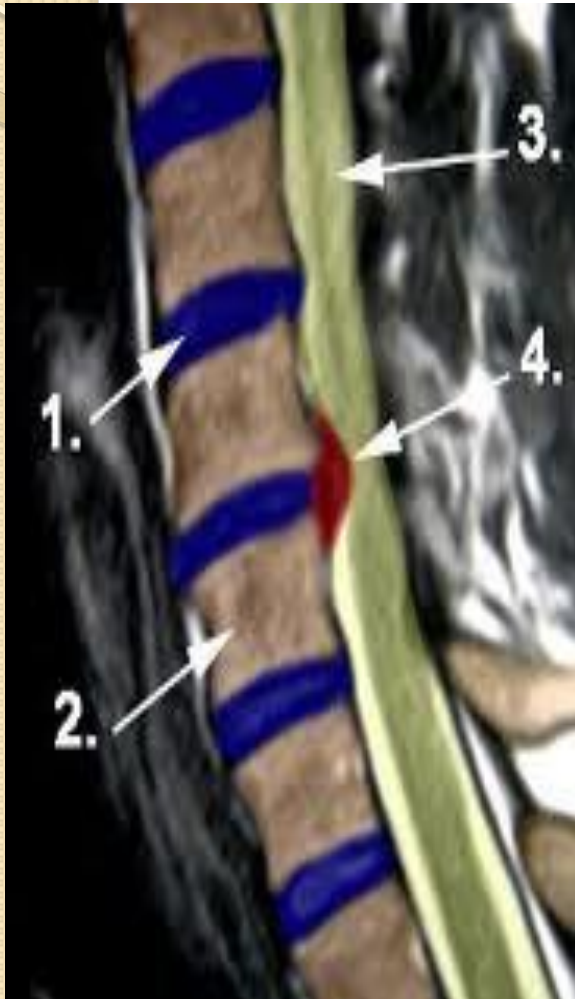


TB-spine

SOL

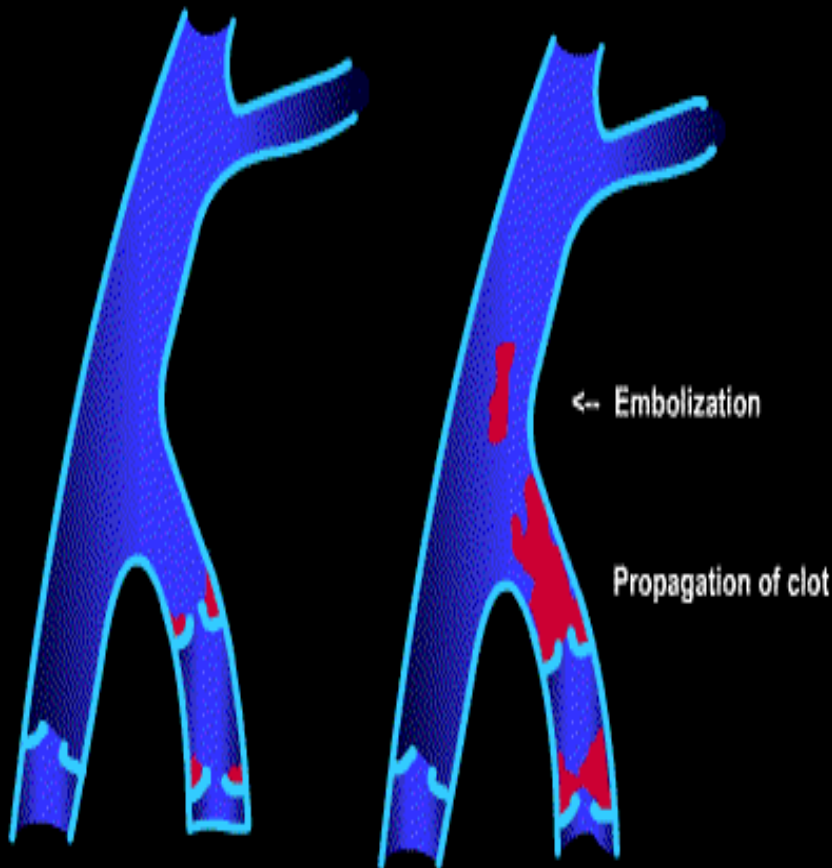


PIVD

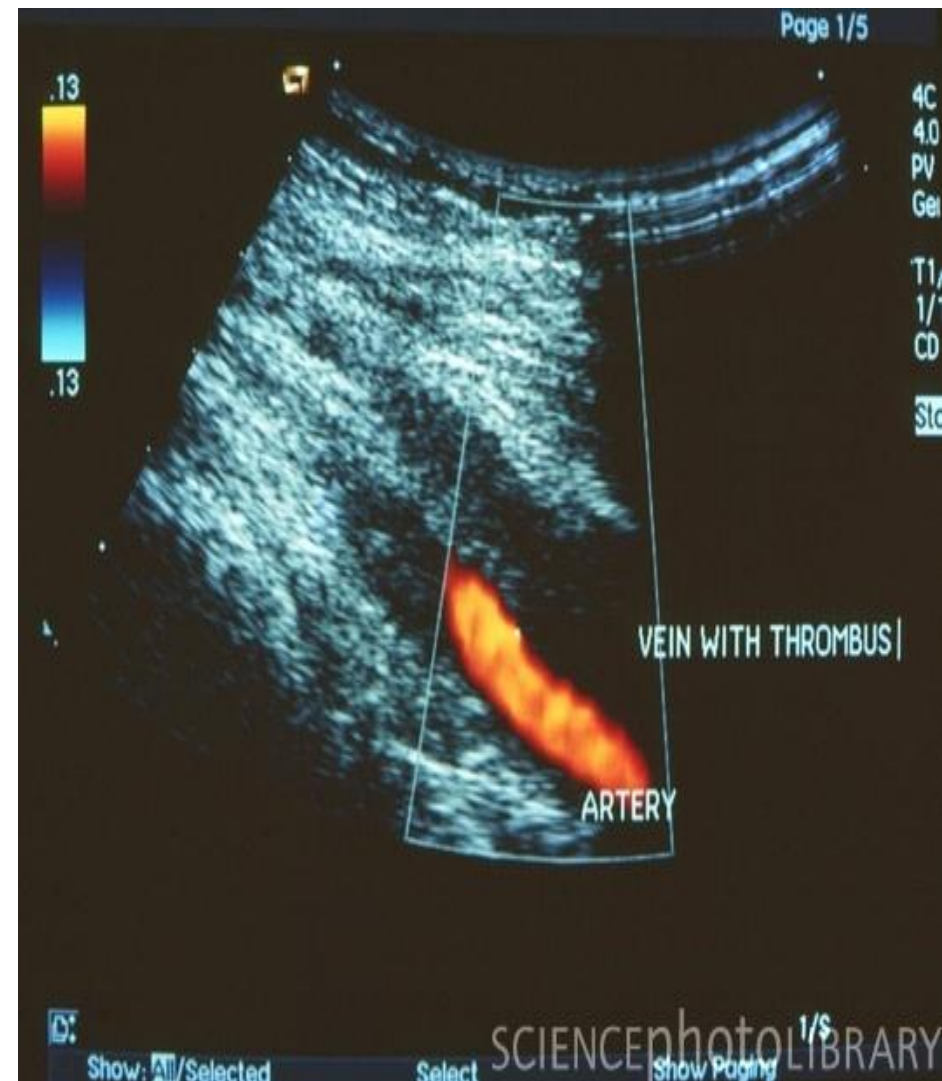


DVT

Thrombus (clot) Formation & Propagation



Early thrombus (clot) formation
in valve pockets of deep vein



SOME COMMON WORLDS :

1-URGENT : Something is very important and need s immediate attention .

2-CONSENT (HIGH RISK , LOW RISK) : to agree to do

3- OVR : occurrence variance report .

4 – Eligible :Having the right to do or obtain something .
eg: Patient have right to treat in specific hospital

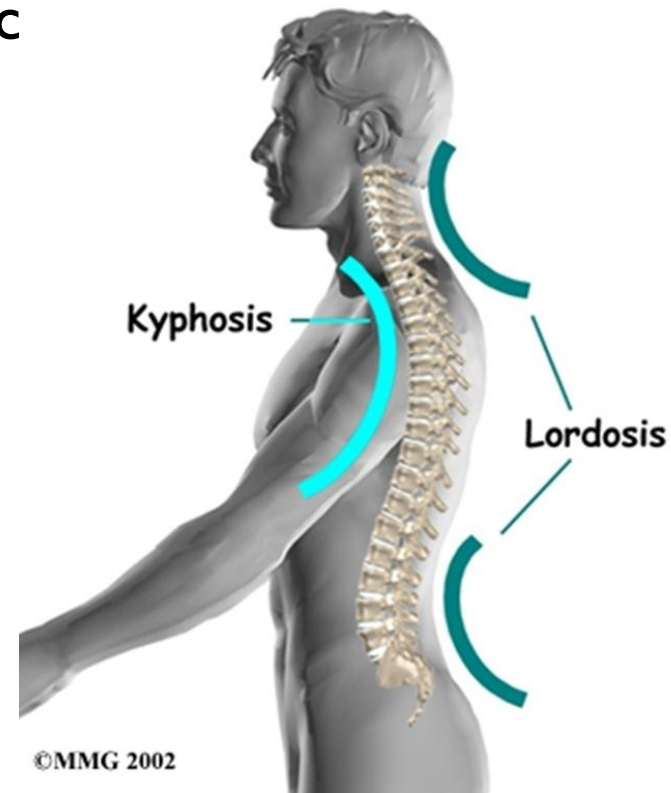
SOME COMMON DISEASES/situation

The spine has four natural curves. Two are lordotic and two are kyphotic.

The cervical and lumbar curves are **lordotic**.

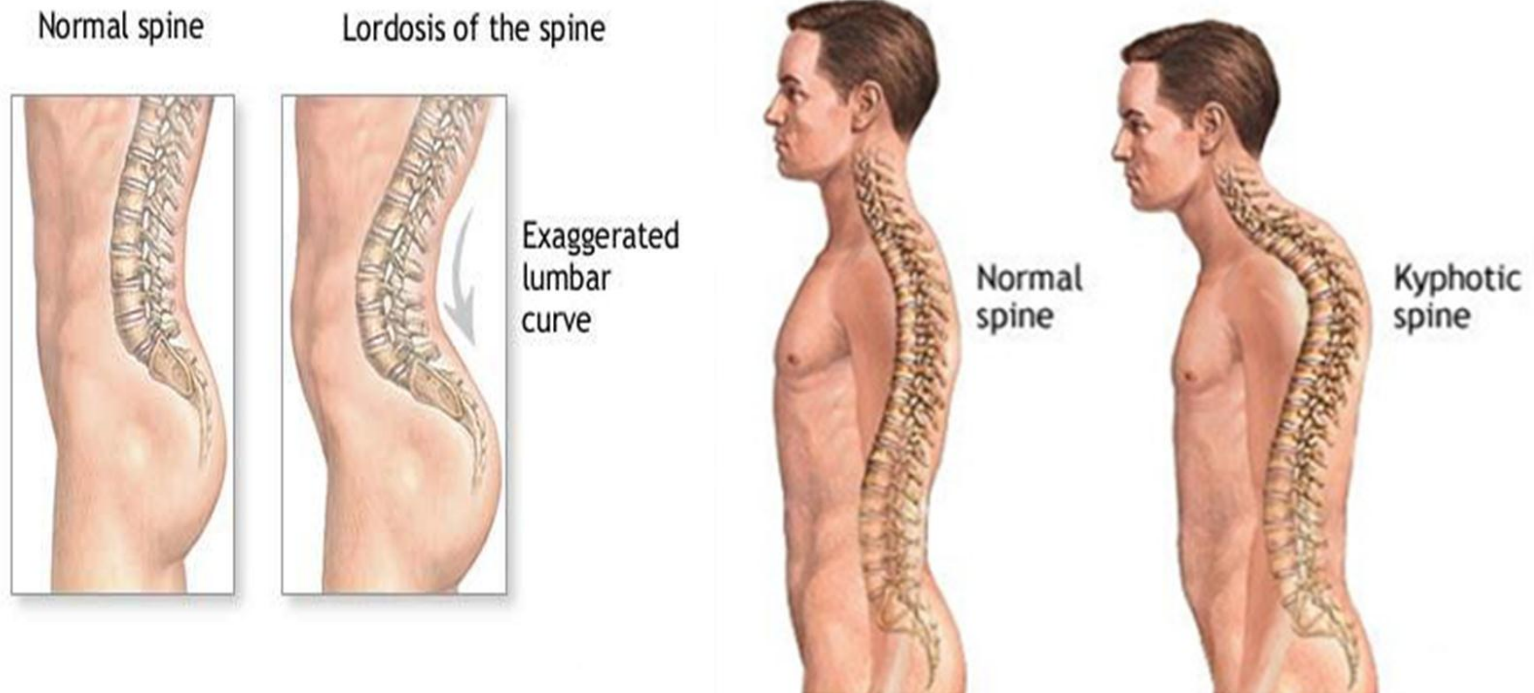
The thoracic and sacral curves are **kyphotic**.

The curves help to distribute mechanic moves.



Kyphosis: (from Greek – kyphos, a hump), also called round back which is outward curvature ,. Excessive kyphosis may cause an extreme out ward curve in the thoracic spine .

Lordosis : or "lordotic" inward curvature, Excessive lordosis may cause an extreme inward curve in the lower back.This condition is also called swayback.



Scoliosis :

- Is a disorder that causes an abnormal curve of the spine from side to side may look more like an "S" or a "C" .

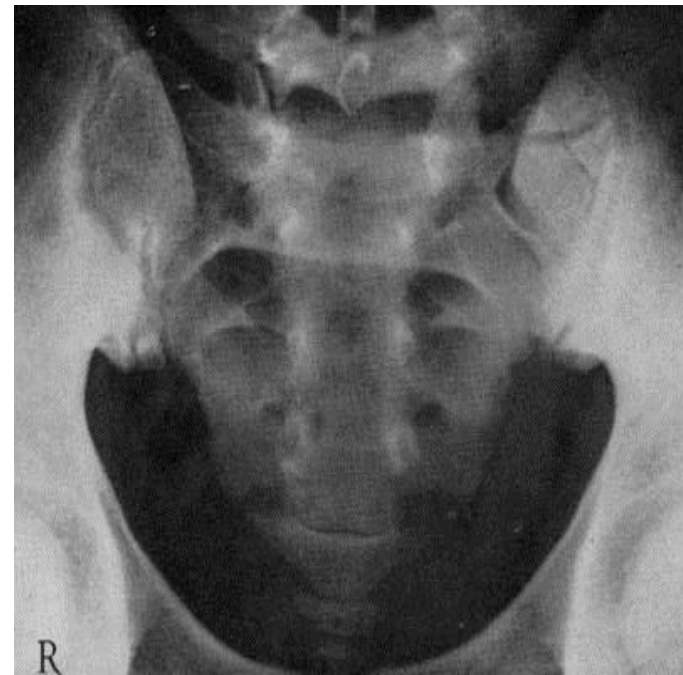


Spina bifida

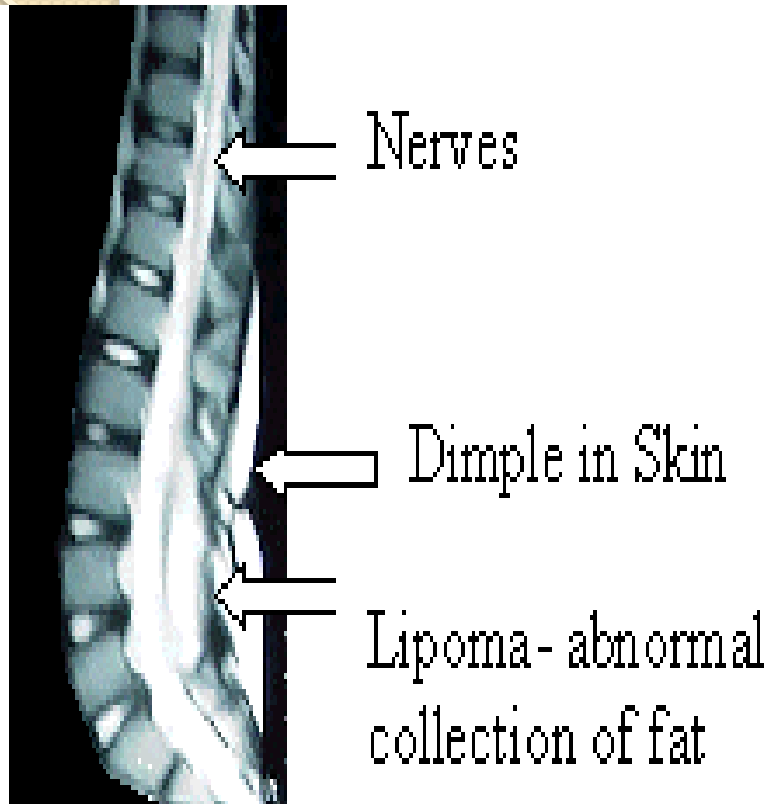
Is a developmental birth defect (malformation) caused by the incomplete closing of the embryonic neural tube. Some vertebrae overlying the spinal cord are not fully formed and remain unfused and open. The incidence of spina bifida can be decreased by up to 75% when daily folic acid supplements are taken prior to conception.



normal



Spinabifida



MRI of Underlying
Abnormality (Lipoma)





Hydrocephaly :

(hydro-water , cephalous -head)

abnormal accumulation of cerebrospinal fluid (CSF) in the ventricles, or cavities, of the brain.

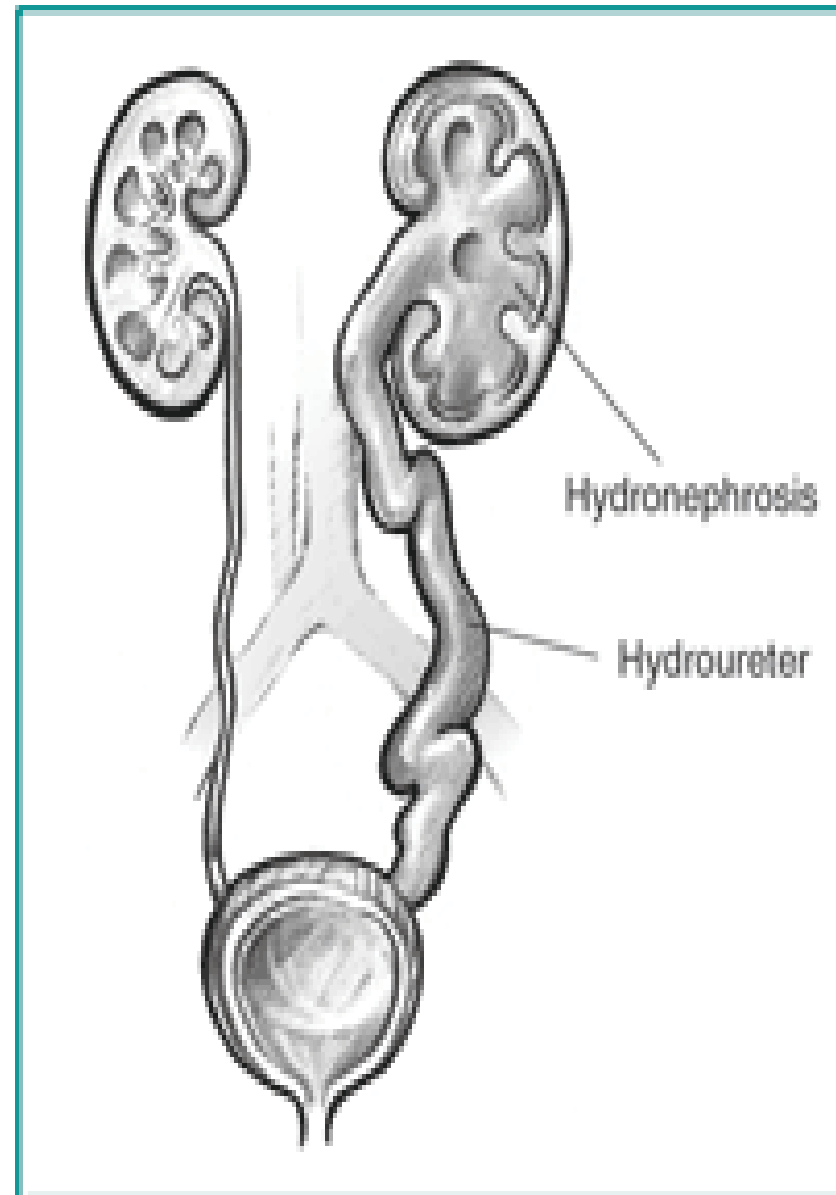
Hydronephrosis:

is distension and dilation of the renal pelvis calyces, usually caused by obstruction of the free flow of urine from the kidney, leading to progressive atrophy of the kidney .

Hydrocephalous



Hydronephrosis



Hemangioma :

- An abnormal buildup of blood vessels in the skin or internal organs.

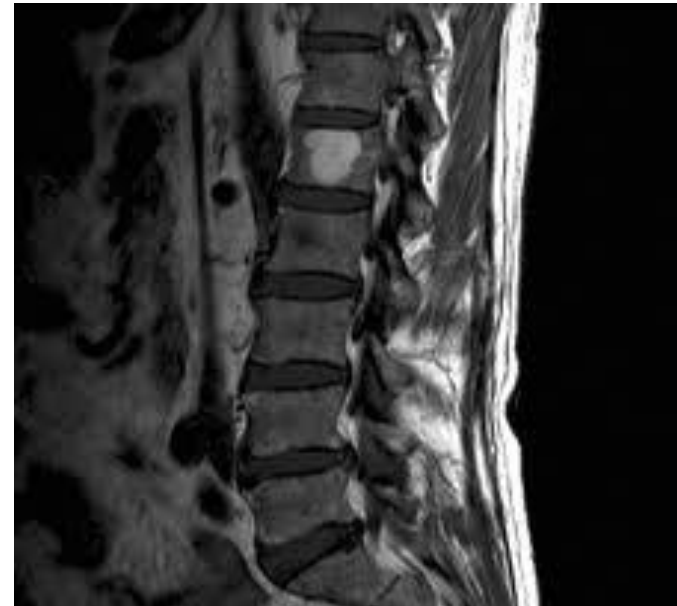
although referred to a tumors, which are not malignant and do not become cancerous .

Meningioma :

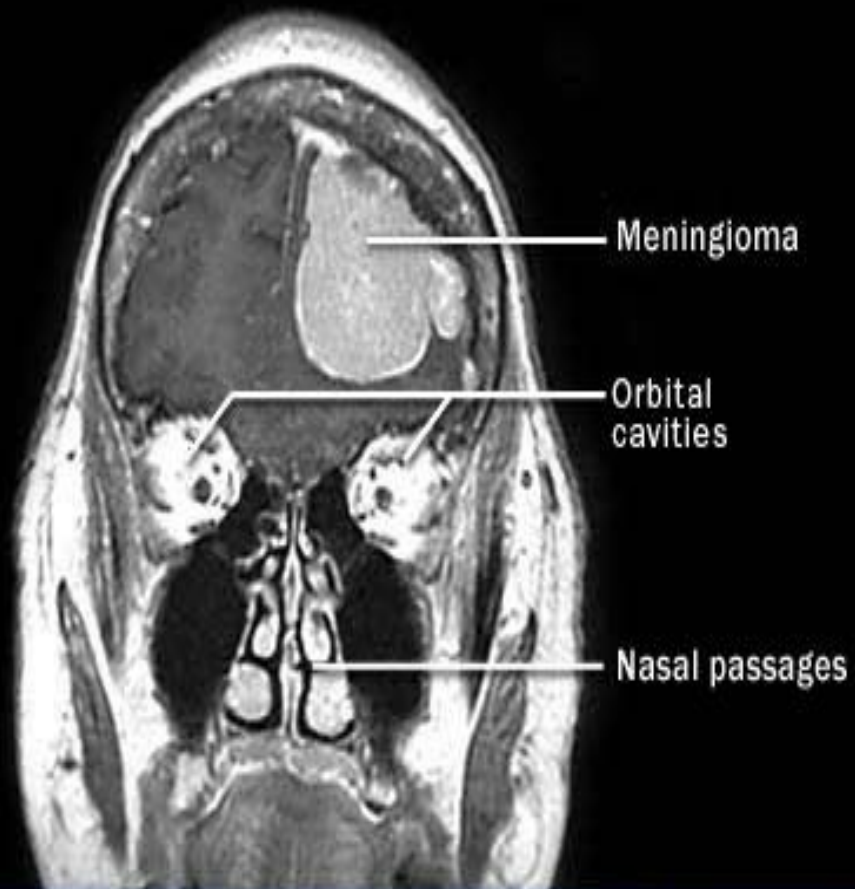
A meningioma is a tumor of the meninges, which are the protective membranes around the brain and spinal cord .

Most meningioma are benign. Malignant meningiomas are extremely rare. , It is arising from the arachnoid "cap" cells of the arachnoid villi in the meninges .

Haemangioma



Meningioma



Osteomyelitis :

osteo- derived from the Greek word osteon,
meaning bone, myelo- meaning marrow, and -itis
meaning inflammation) **simply** means an infection of
the bone or bone marrow.



H.W

- DEFINITION OF **DYSPNEA**
 - ashalarfaj@ksu.edu.sa