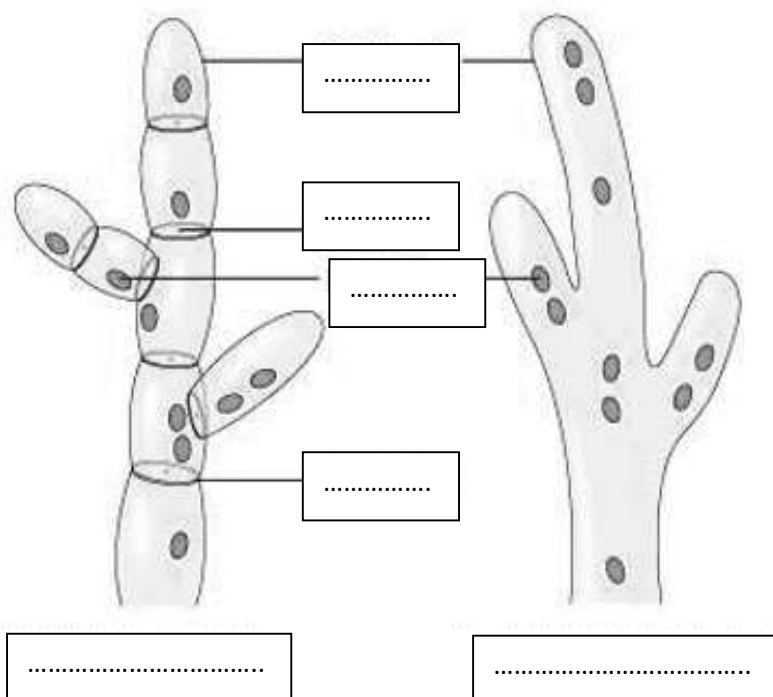


**Question 1: Fill the gaps:**

- 1- The first step in Preparing the microorganism to examine by TEM is primary Fixation by ..... overnight in refrigerator.
- 2- All samples examined by TEM should be dehydrated by .....  
.....
- 3- To view bacterial cells under TEM, we use ..... Instead of visible light (Lamb).
- 4- The last steps of bacterial cells treatment for TEM examination include cutting the embedded blocks using ....., then loading on the grid, finally staining by ..... and .....

**Question 2: Fill the labels in the following diagrams.**

- 1- The two types of hyphae are illustrated in the following diagram.



-----

\_\_\_\_\_

2- This virus is called .....  
It is not .....

.....

*symmetry*



.....



.....  
.....

.....