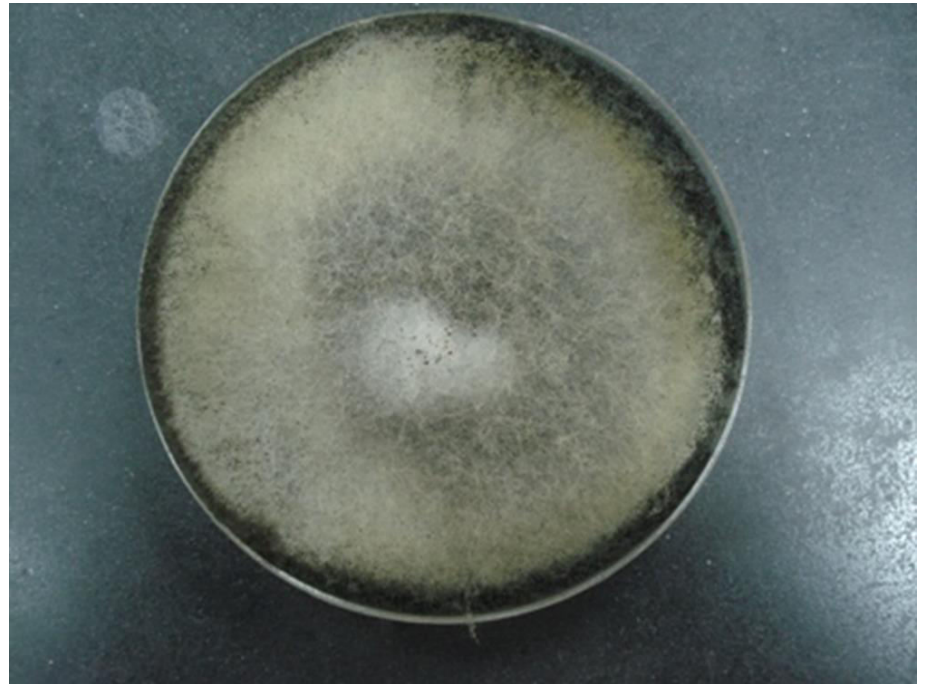


Continue *Saprophytic Fungi*
(*Air Contaminant Fungi*)

Rhizopus sp.

Colony morphology:

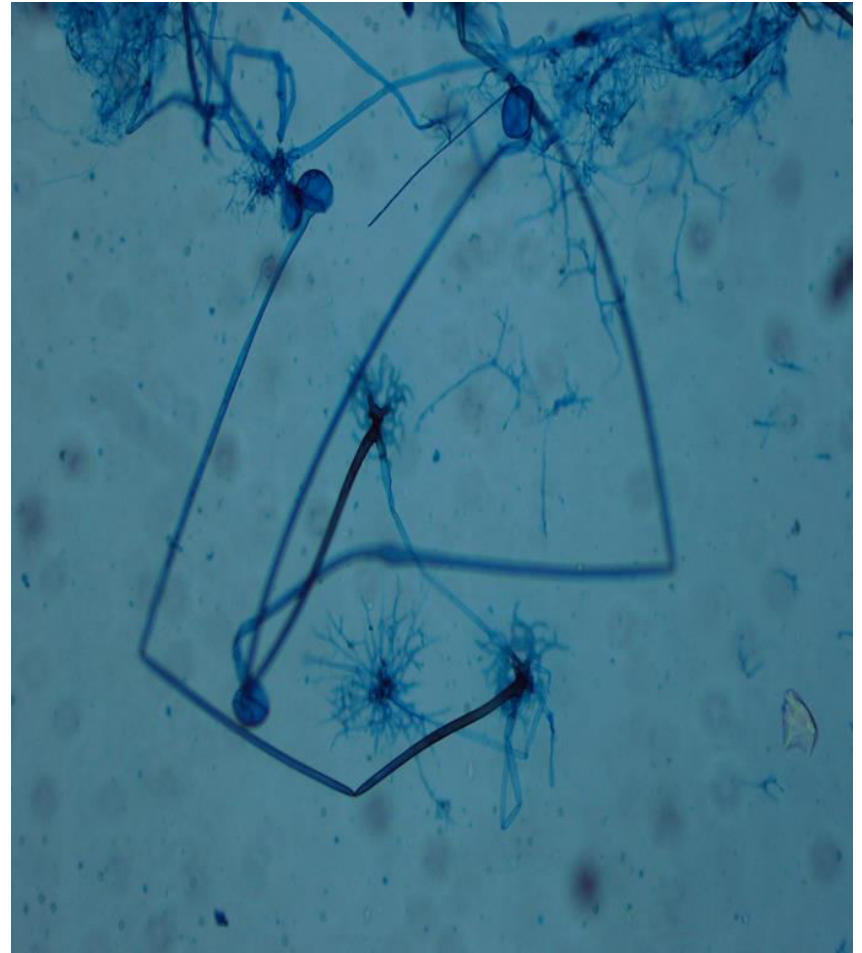
Colonies are cottony and push up against under the lid of the Petridish.



Rhizopus sp.

Microscopic Morphology:

- **Sporangiophores** are long and terminate with sporangium.
- **Sporangia (sporangium)** are dark, round shape, which form a sac like structure that contain many oval, colorless or brown **spores**.
- **Rhizoid** (root-like structure)

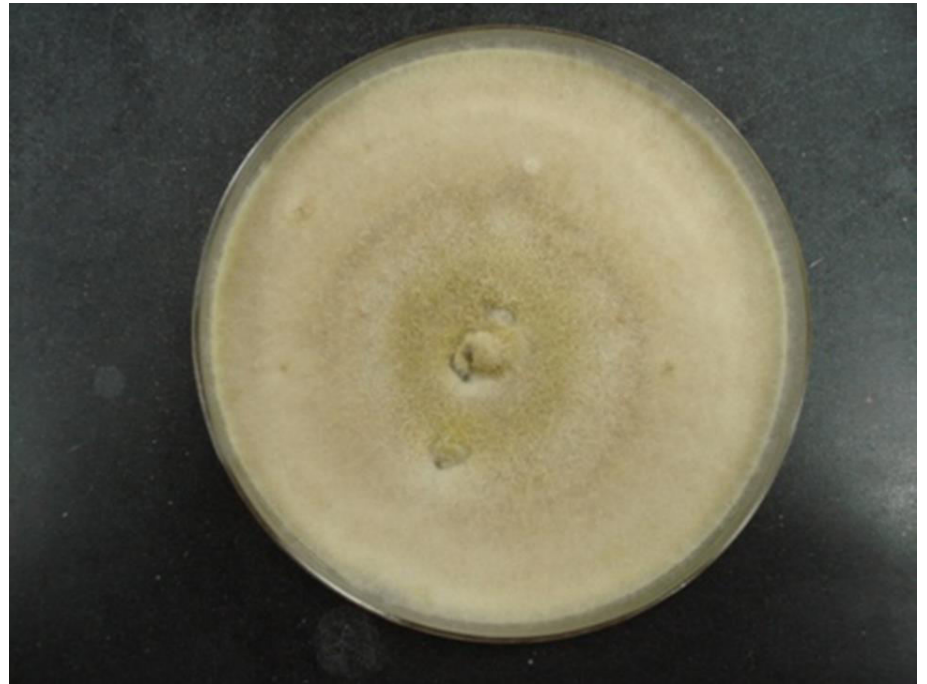




Fusarium sp.

Colony morphology:

Colony morphology at first white and cotton but often quickly develops a pink or violet color.

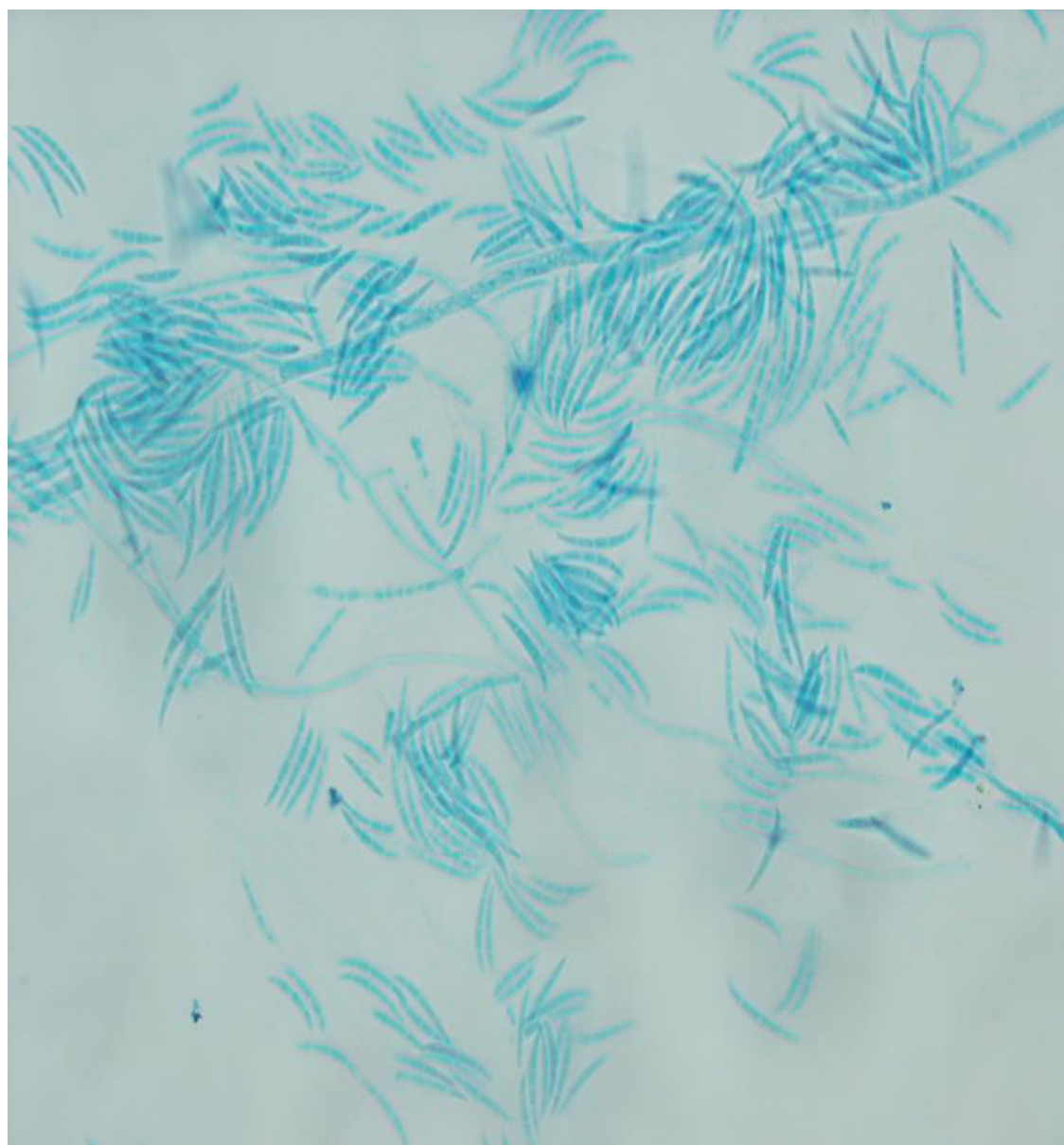


Fusarium sp.

Microscopic Morphology:

- Septate hyphae .
- Long or short simple conidiophore.
- Macroconidia are cylindrical (sickle shaped) and multi celled.



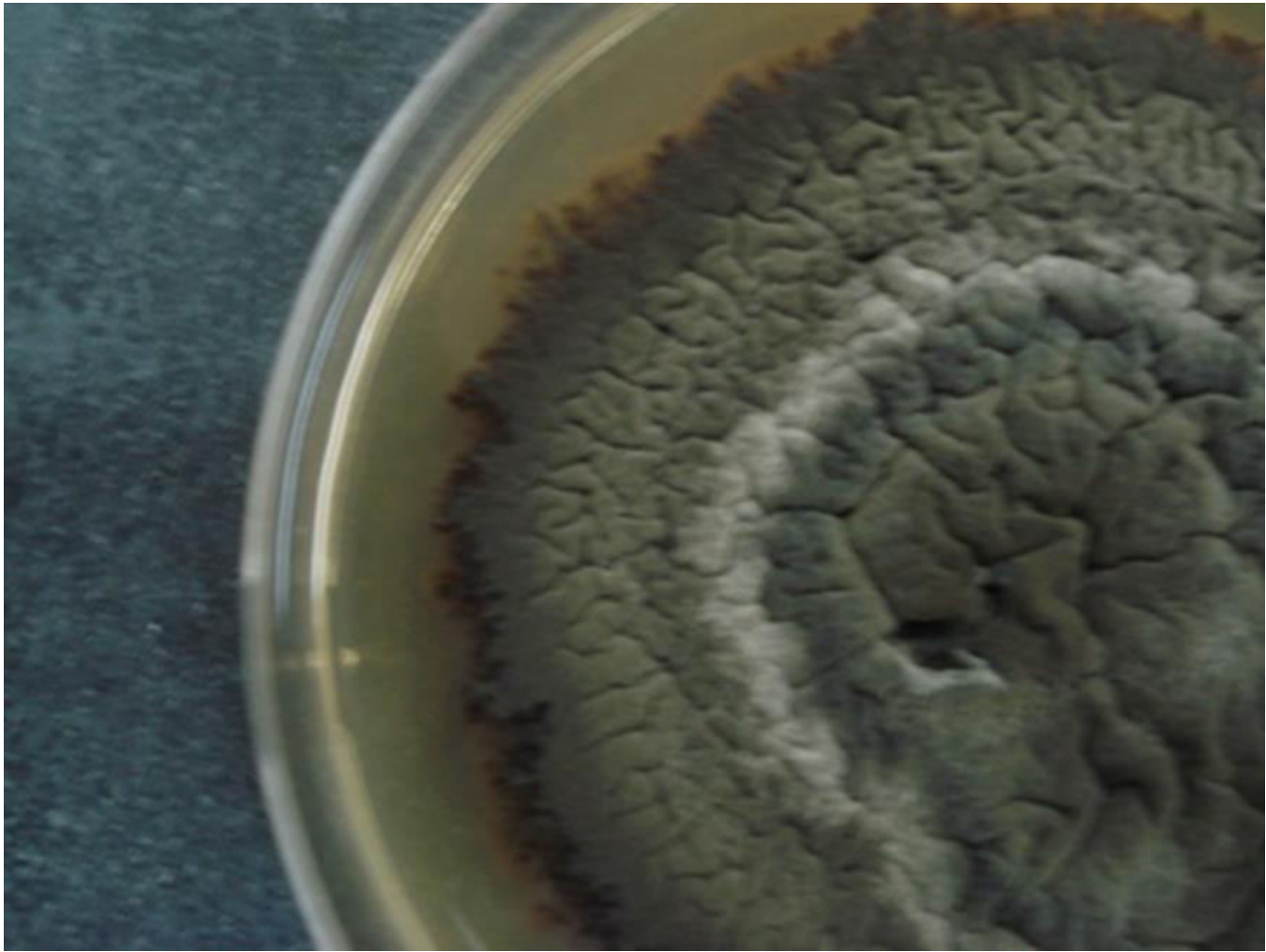


Alternaria sp.

Colony Morphology:

Colonies are dark (gray-brown or green to black)

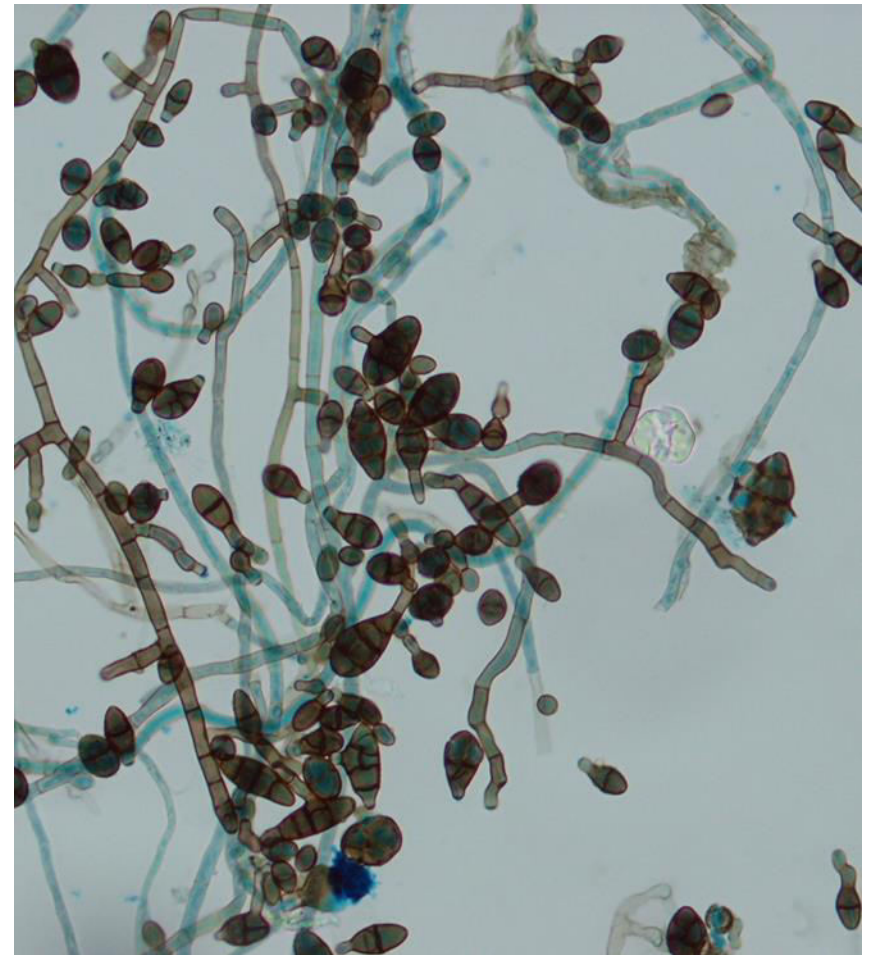




Alternaria sp.

Microscopic Morphology:

- Dark, septate hyphae
- Conidiophore.
- Macroconidia which are golden brown in color, found singly or in chains.
- The macroconidia are multicelled with longitudinal and transverse septations.





Bipolaris sp. (Drechslera sp.)

Colony Morphology:

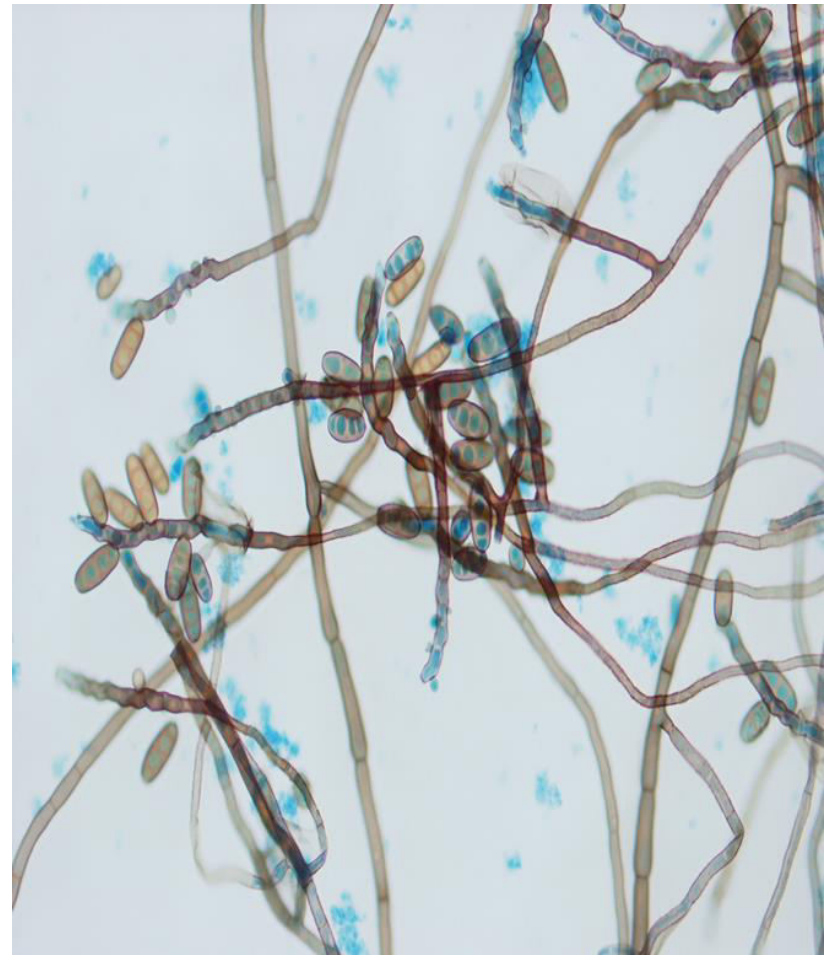
colonies brownish in color



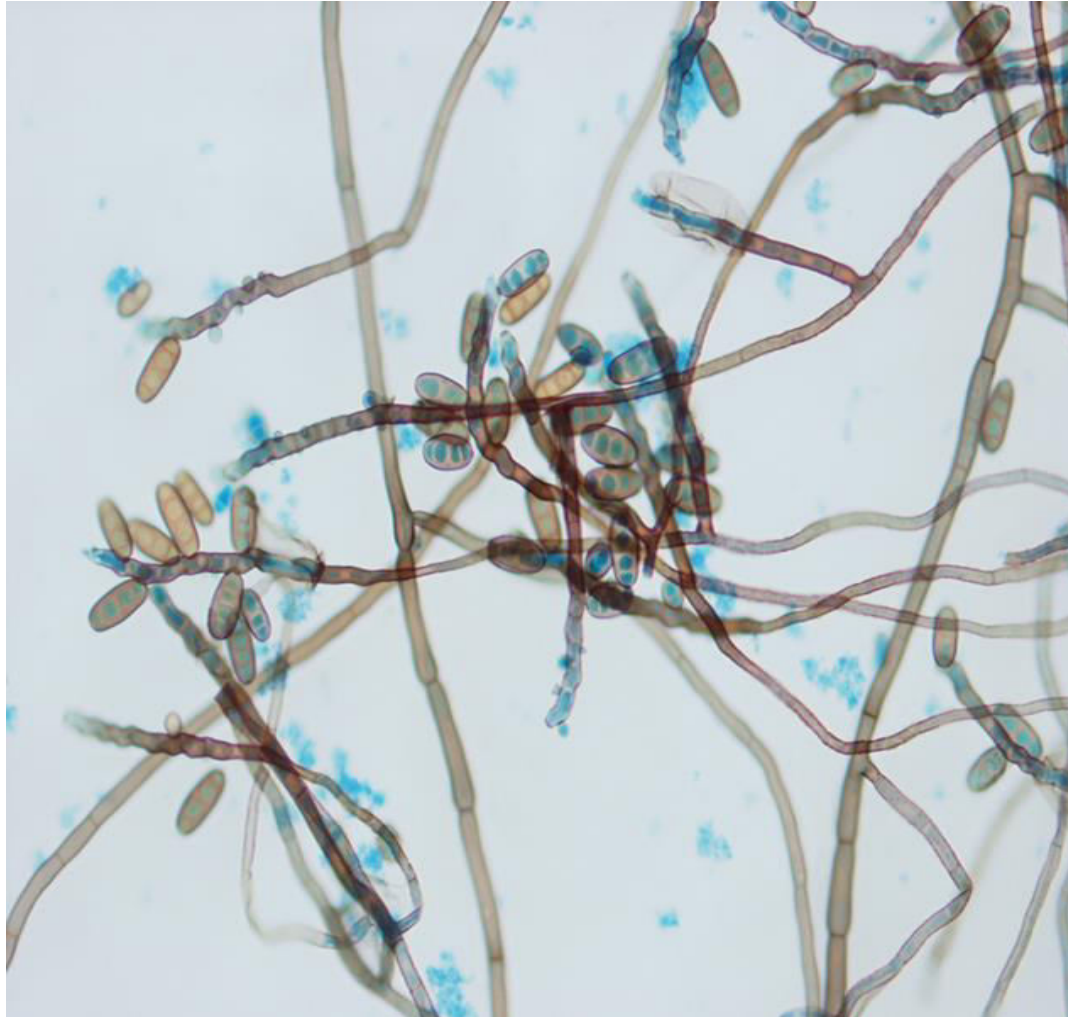
Bipolaris sp. (Drechslera sp.)

Microscopic Morphology:

- Dark Septate hyphae.
- Conidiophore.
- Macroconidia are brown, smooth, cylindrical with transverse septa (4 or more).



Bipolaris sp. (Drechslera sp.)



Curvularia sp.

Colony Morphology:

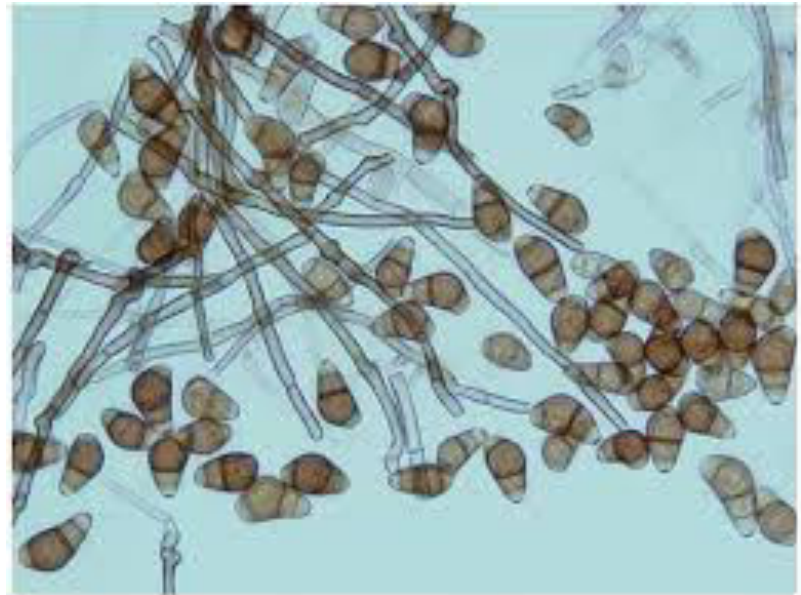
Wooly colonies, dark in color



Curvularia sp.

Microscopic Morphology:

- brown septate hyphae.
- Conidiophores are brown, simple or branched and are bent at the points where the conidia originate.
- Macroconidia are pale brown color, straight or curved.
- The macroconidia are multicelled by transverse septa.





Penicillium sp.

Colony Morphology:

Colonies are green to yellow green and velvety to powdery.



Penicillium sp.

Microscopic Morphology:

- Septate hyphae.
- Conidiophore are simple or branched.
- phialides are flask shaped
- Conidia have brush or finger like .

