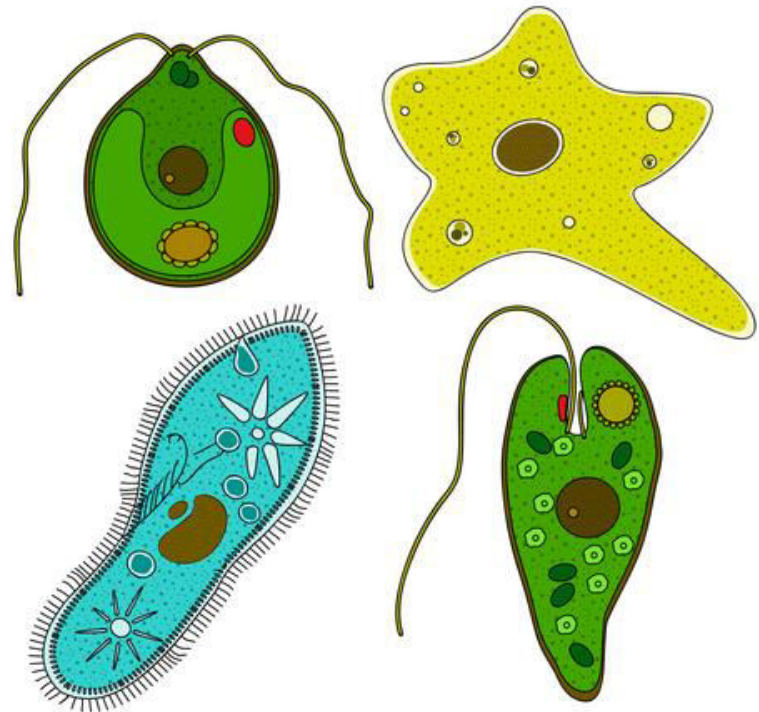
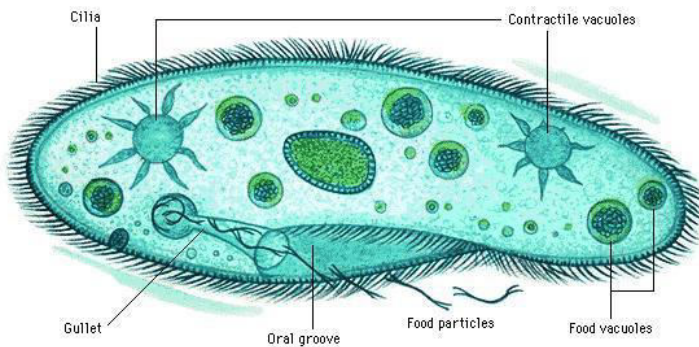


Protozoa



Toxoplasma gondii

◆ Name of the disease:

Toxoplasmosis.

◆ The life cycle involves two hosts:

✓ The cat:

The definitive host, where the sexual cycle takes place

✓ The man:

the intermediate host, where the asexual cycle Takes place

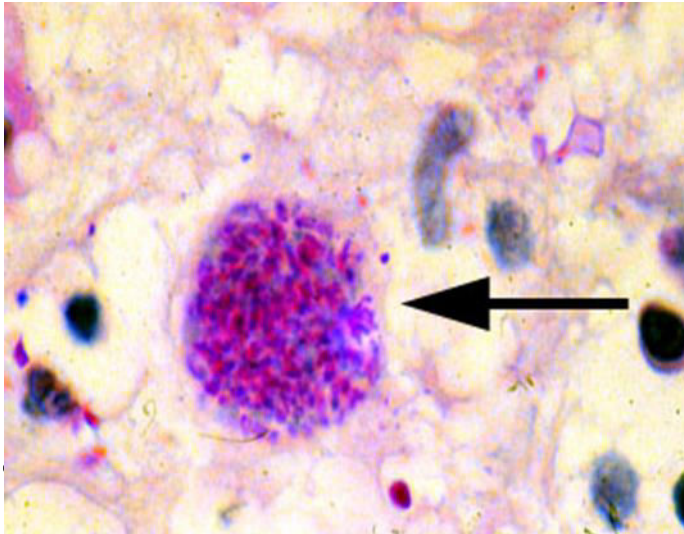


Toxoplasma gondii

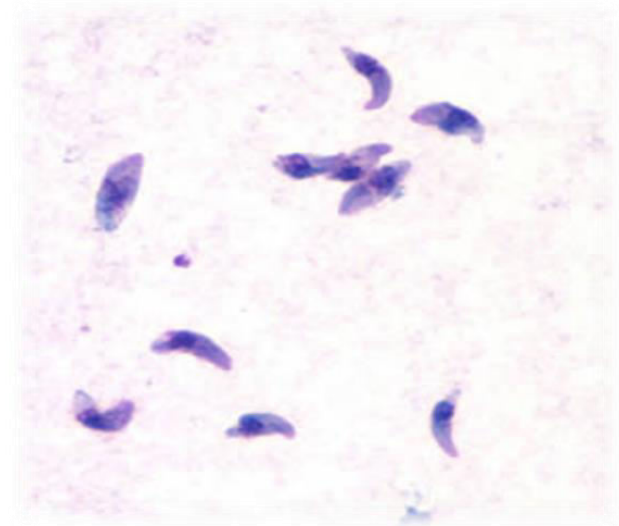
- It's an animal parasite.
- Two forms: cyst and trophozoite
- Crescent shape, with pointed ends (tachyzoite).
- It's an intracellular parasite can invade cells of different organs such as lymph gland, liver, muscles, CNS.
- The specimen is blood for serology.

Infective Stages

Cyst



Trophozoite



Oocyst



Transmission of *Toxoplasma gondii*

➤ All parasitic stage are infectious.

Humans can become infected by:

1. Accidental ingestion of oocysts present in cat feces.
2. Eating raw or undercooked meat.
3. Congenitally from infected mother to fetus.

Clinical Symptoms

- ◆ Infection of normal human hosts are common and usually **asymptomatic**.
- ◆ Infection in **immunocompromised individuals** is very severe and they may suffer relapse of the infection.
- ◆ **Congenital infections** can also be severe, it can result in still births, brain lesions, and they are a major cause of blindness in newborns.

Free living amoeba: *Acanthamoeba*

✧ **Two forms : trophozoite & cyst**

✧ **CNS and eye infection ***

✧ **Diseases:**

- Granulomatous amebic encephalitis (GAE)**
- Infection of the cornea of the eye (amebic keratitis)**

