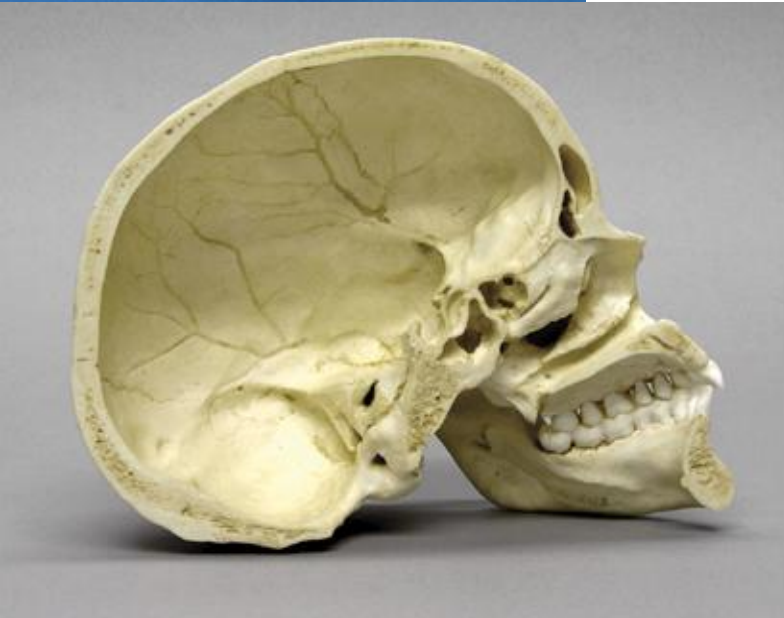
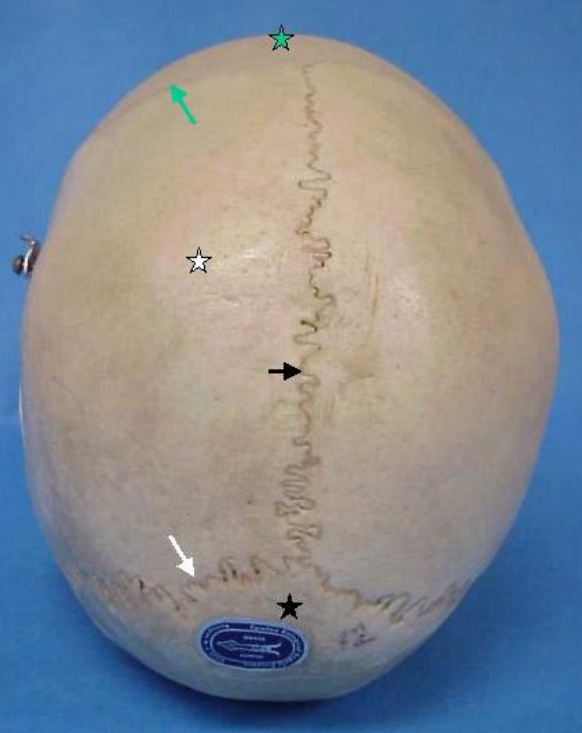


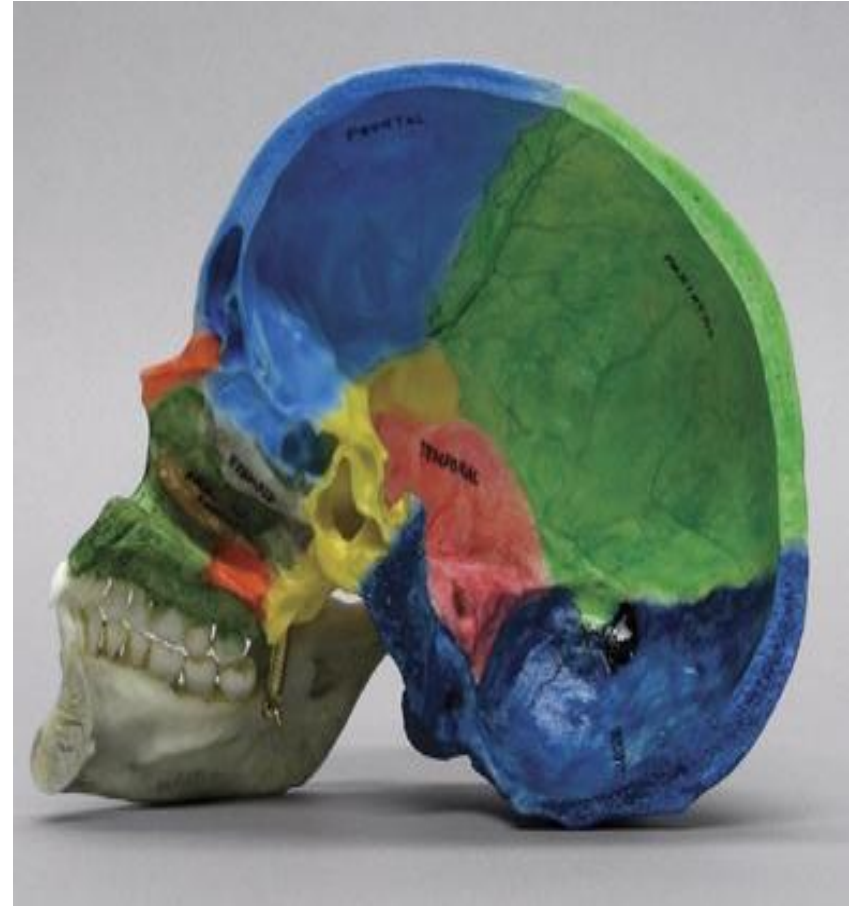
# skull



# skull

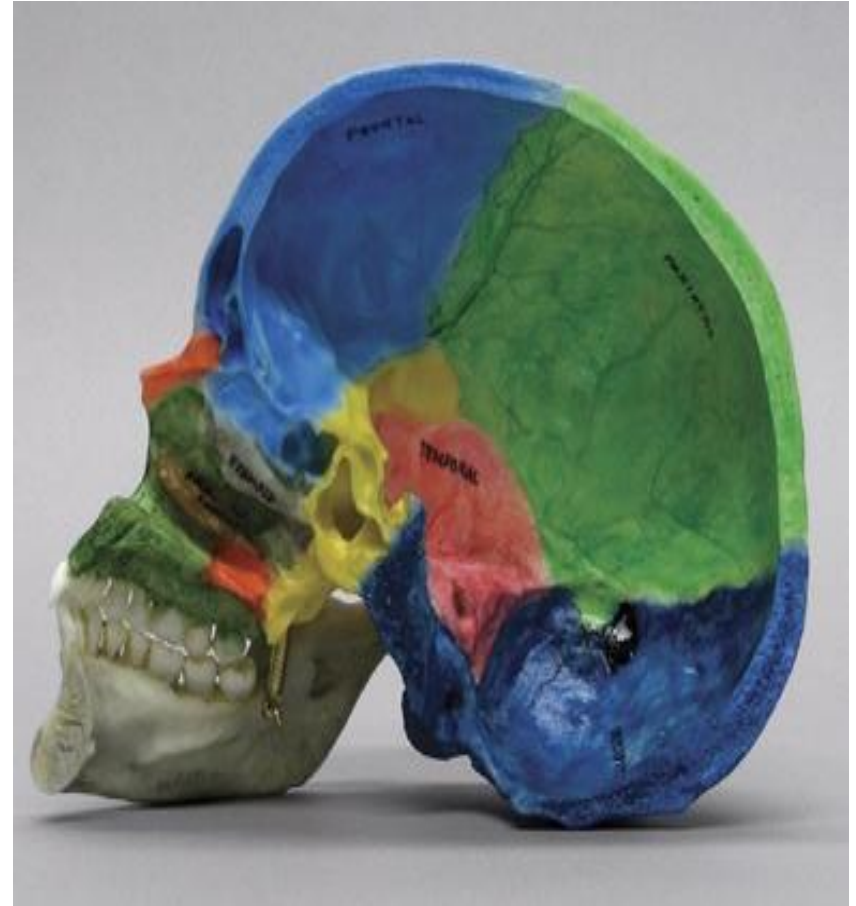
The skull is divided into :

- 8 Cranial Bones .
- 14 Facial Bones .



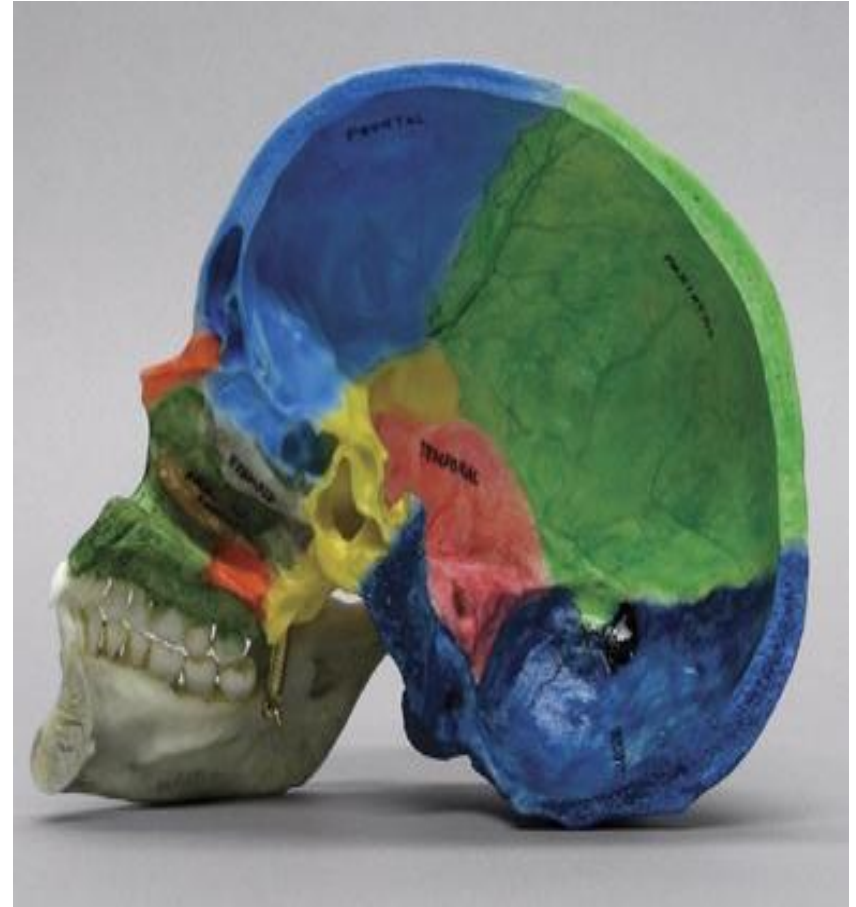
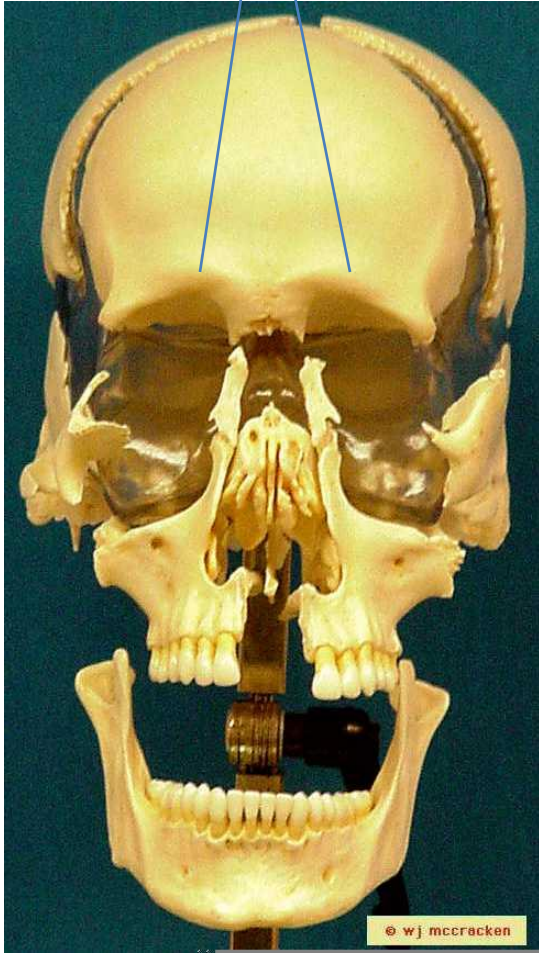
# Cranial Bones

- Frontal bone
- occipital
- Rt. Parietal Bone
- Lt. Parietal Bone
- Rt. Temporal Bone
- Lt. Temporal Bone
- Sphenoid
- Ethmoid



# Frontal bone

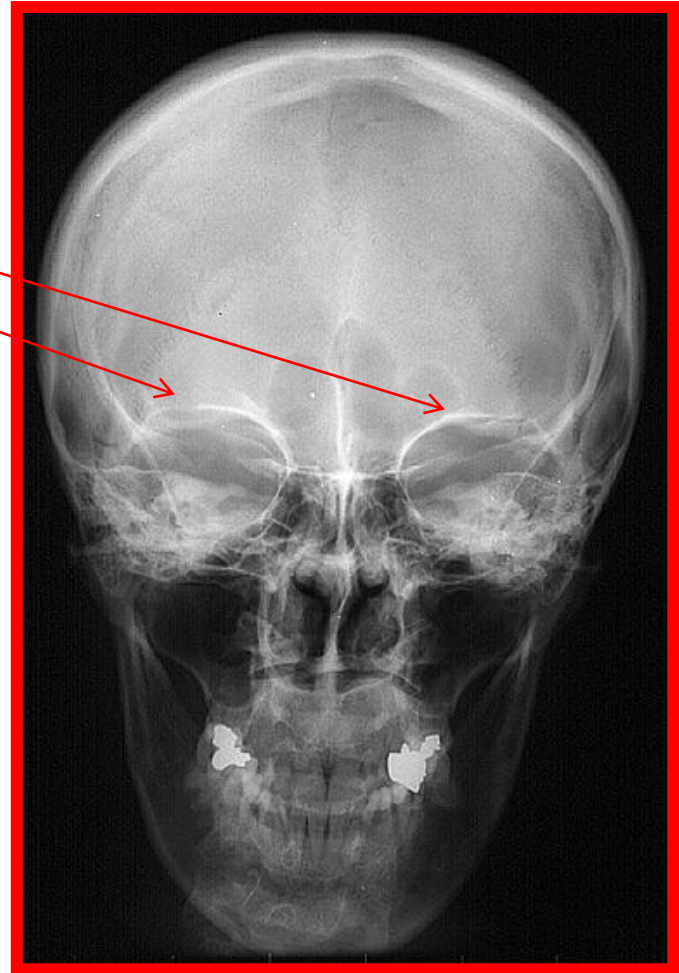
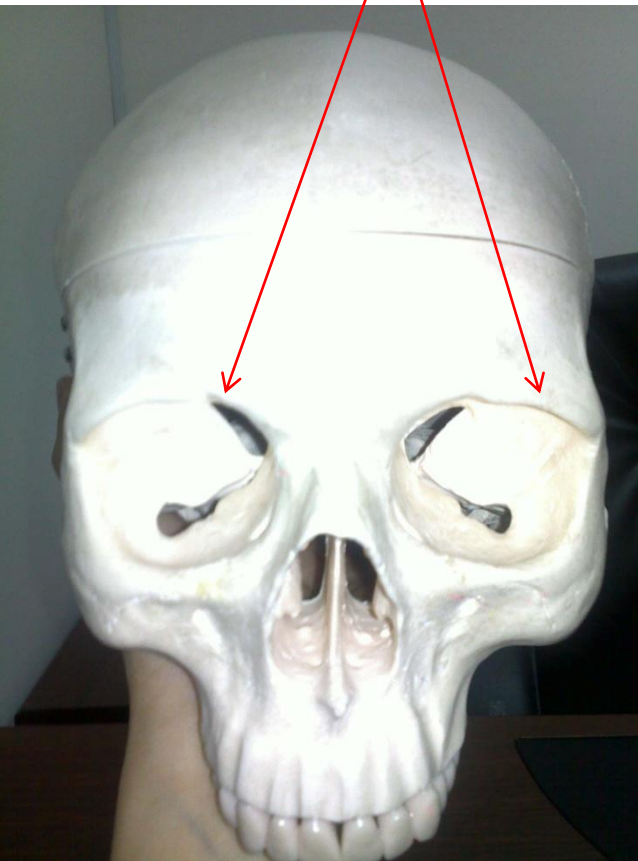
Supraorbital margin





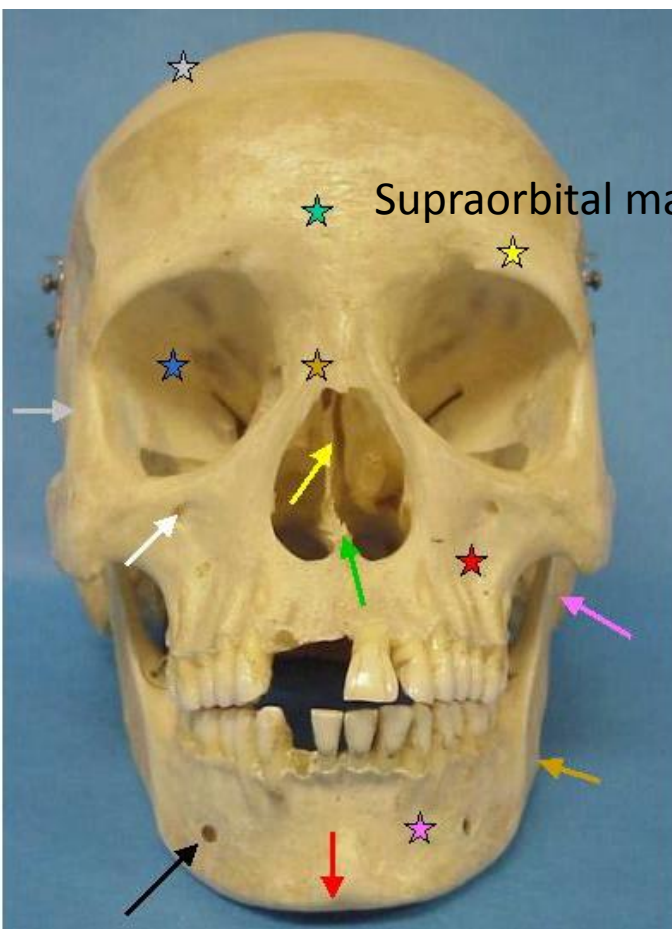
# PA

Supraorbital margin

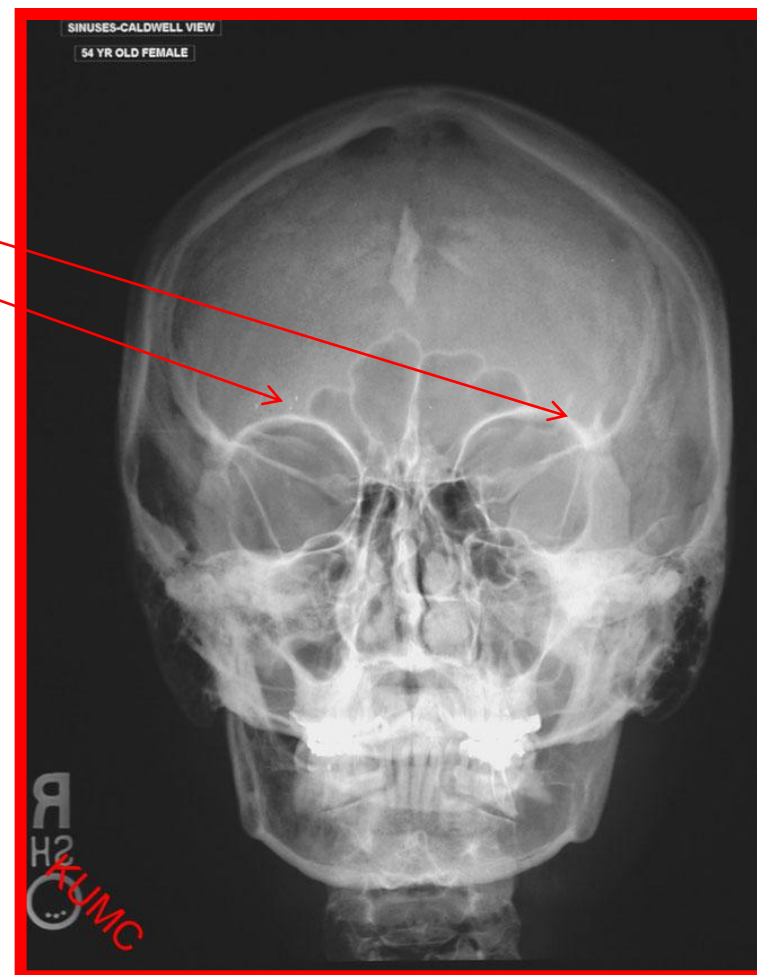


# Caldwell view

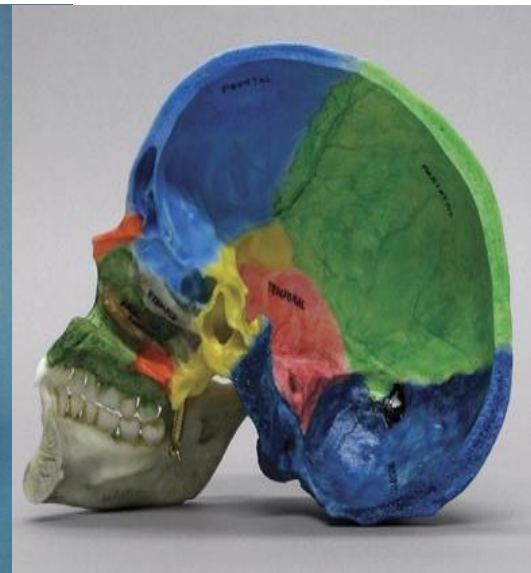
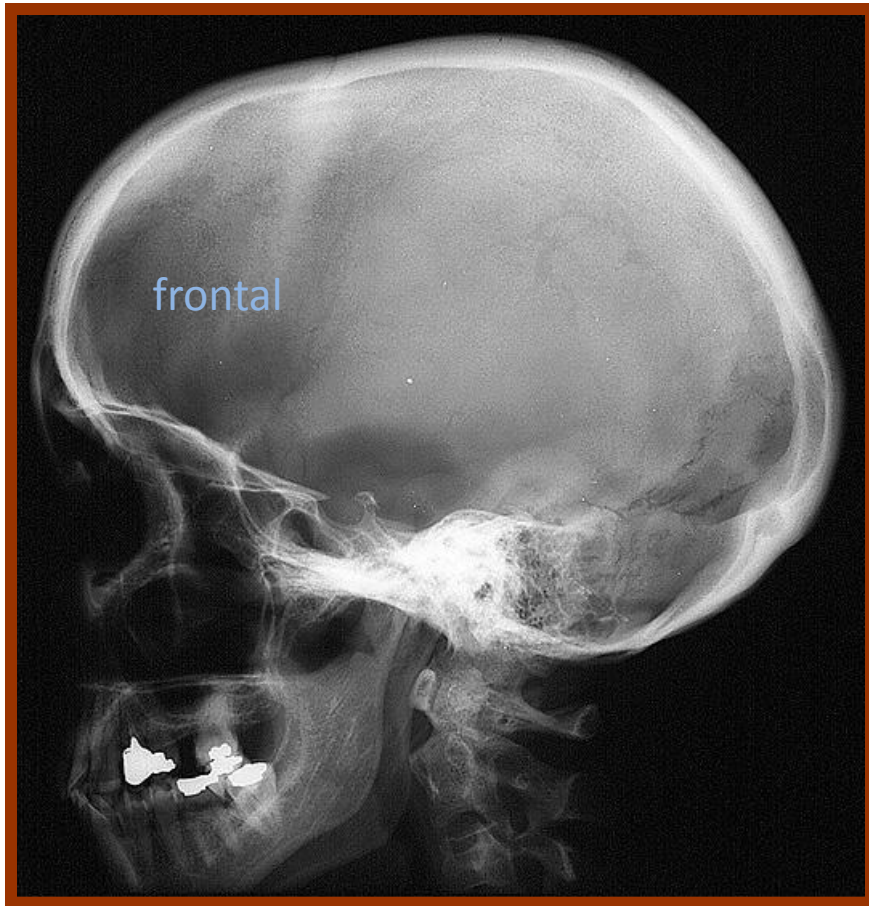
## PA with angle



Supraorbital margin

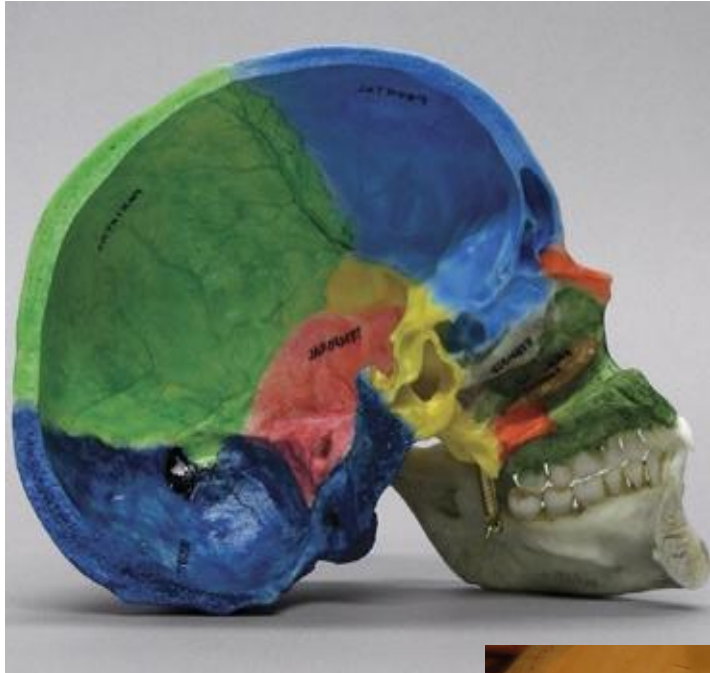


# Lateral skull

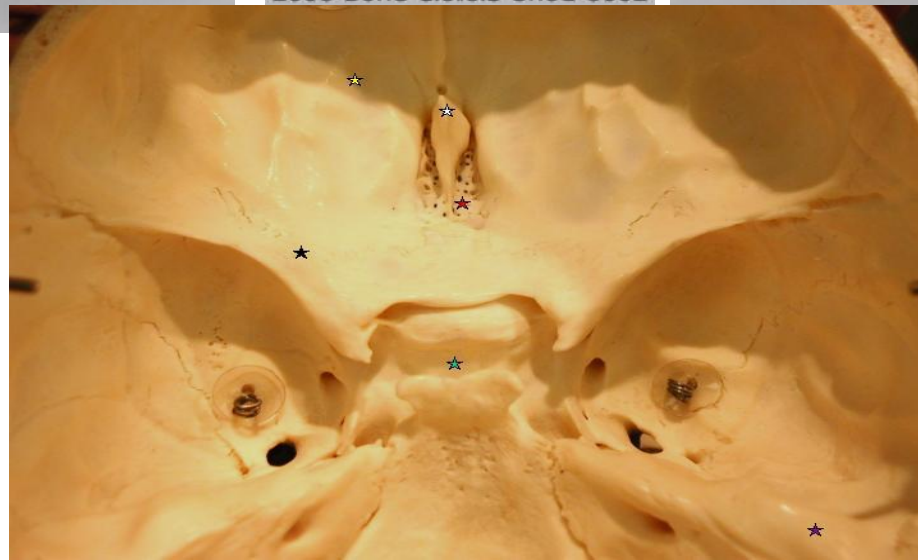
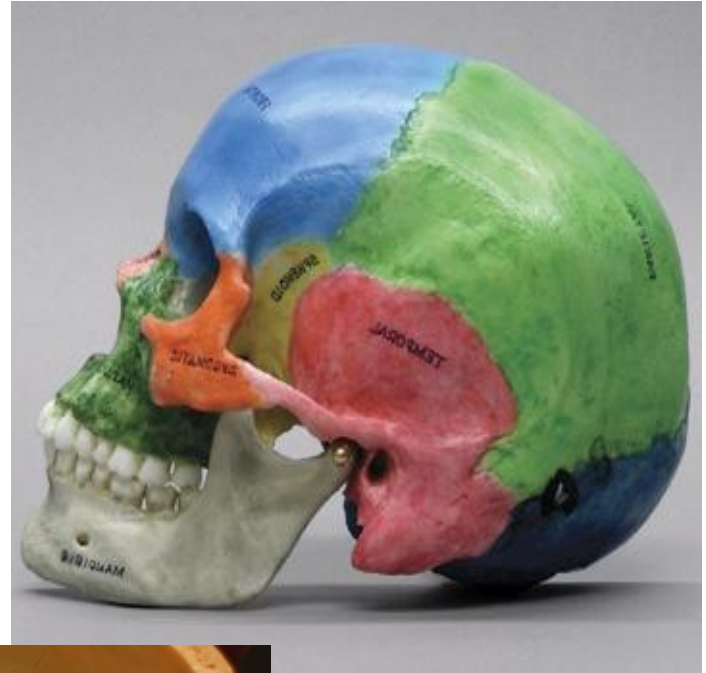




# Sphenoid

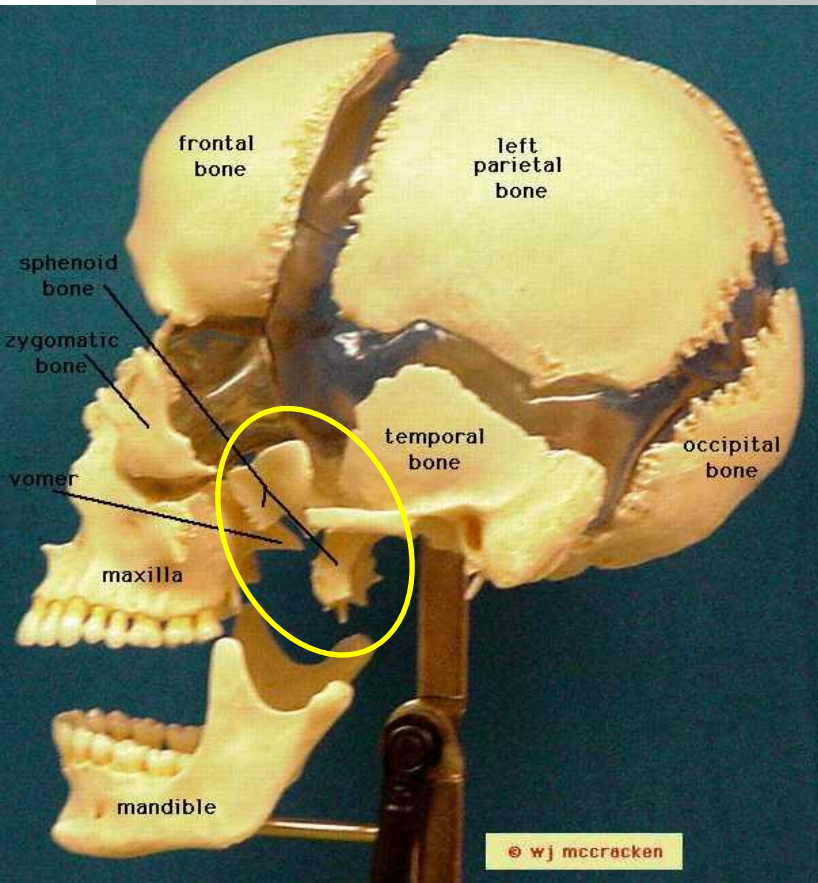


2008 Bone Clorid 800S

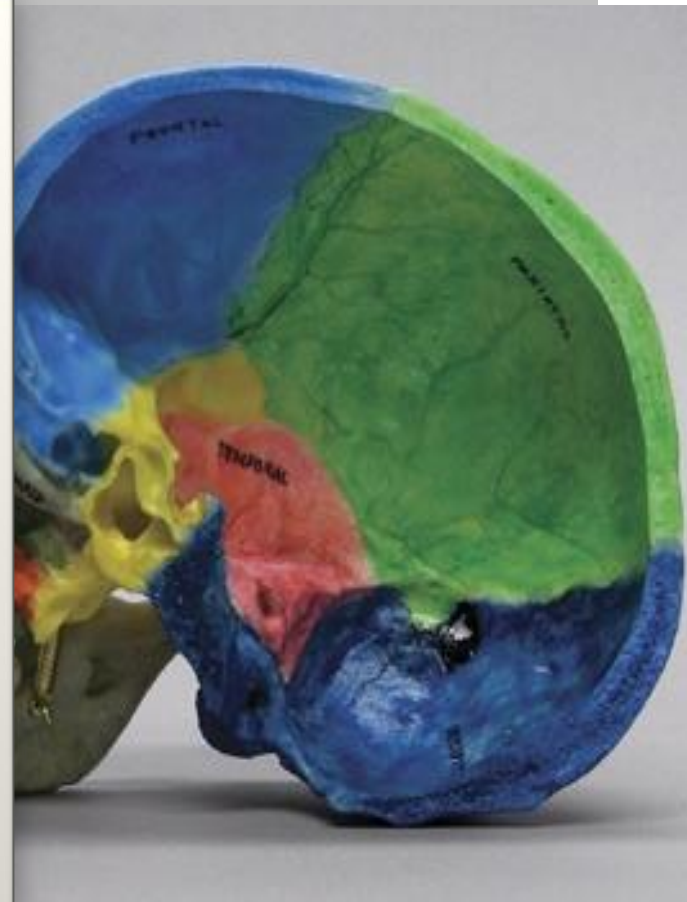
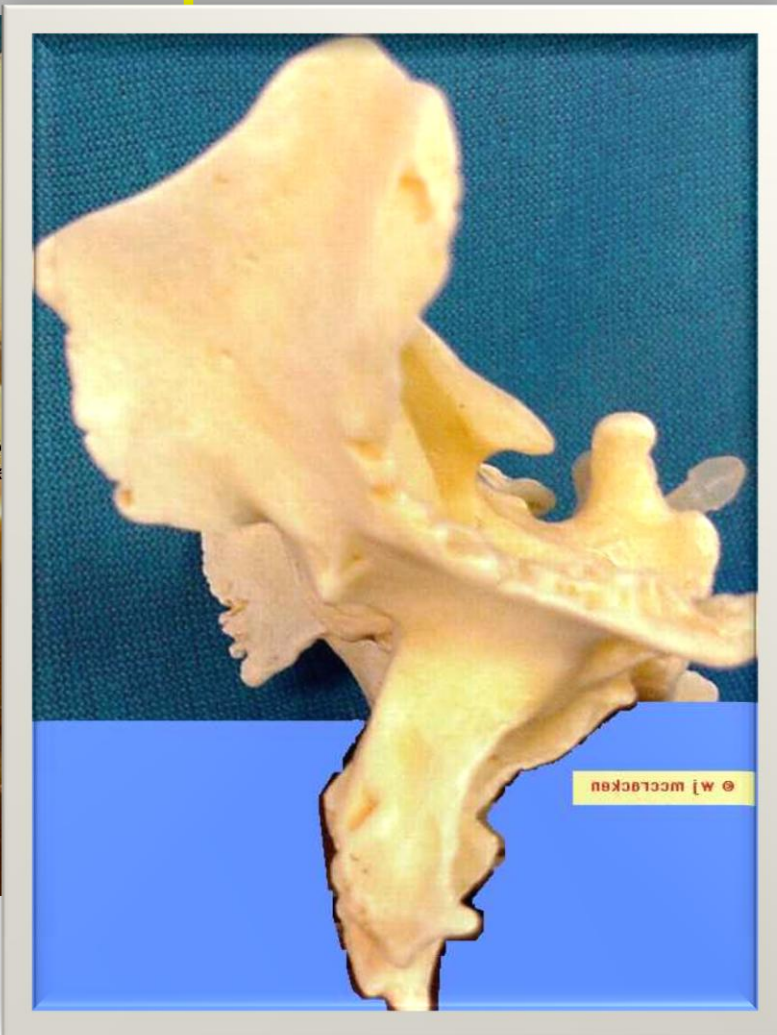
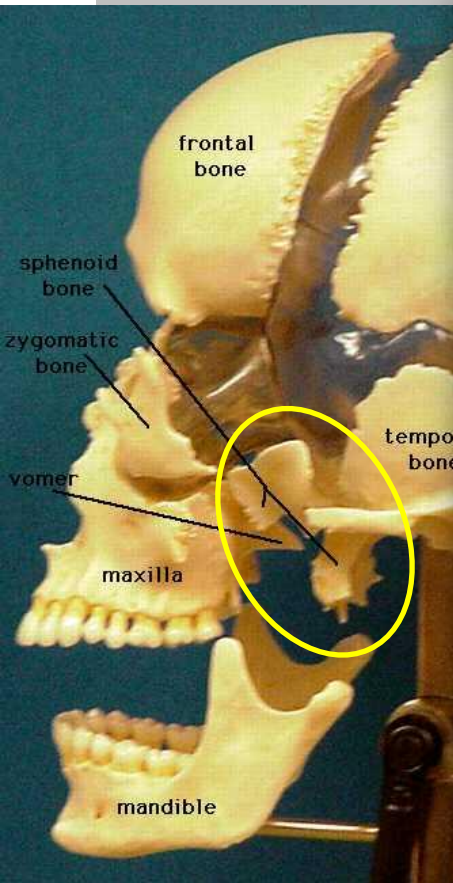




# Sphenoid lateral



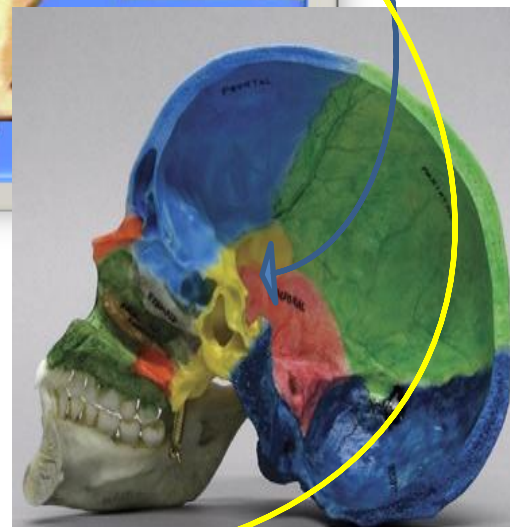
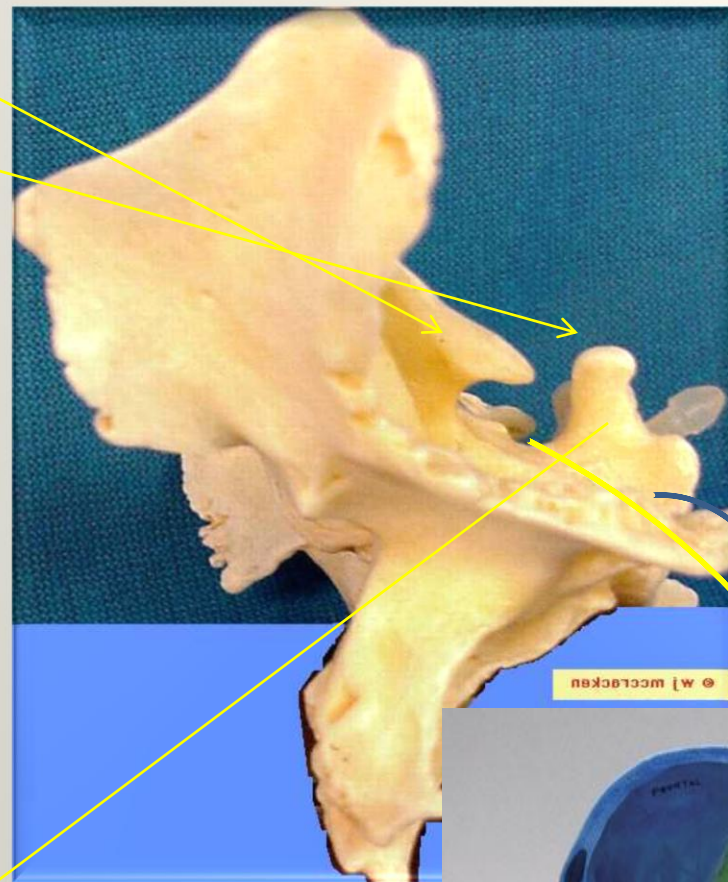
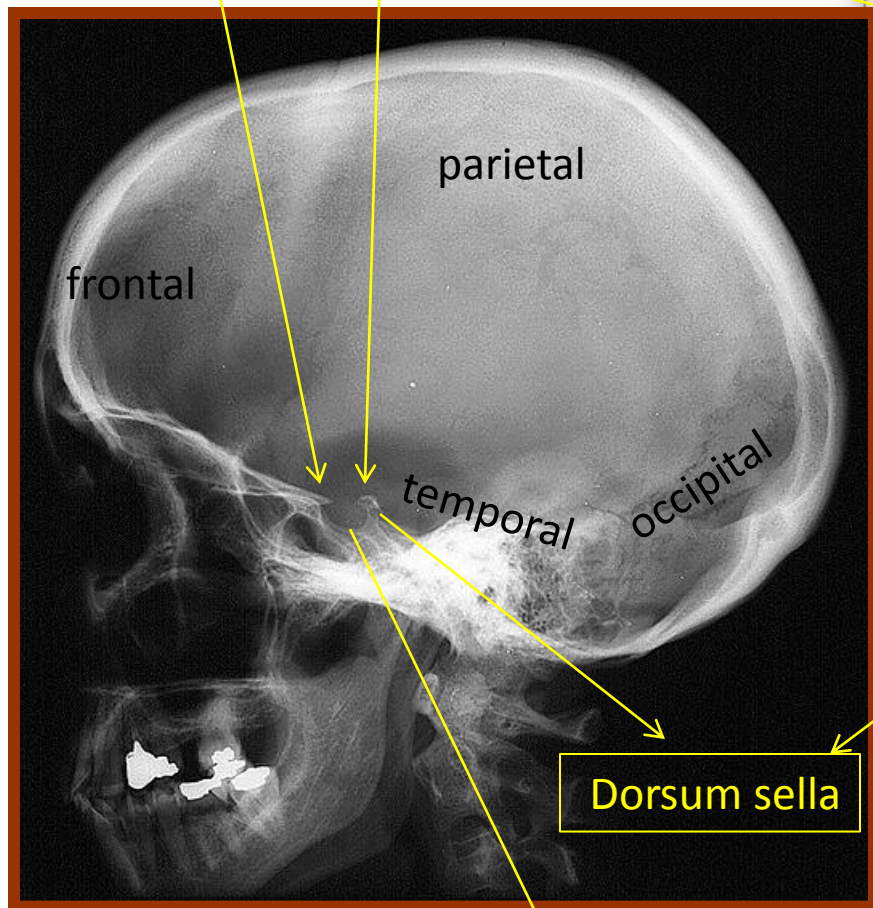
# Sphenoid lateral





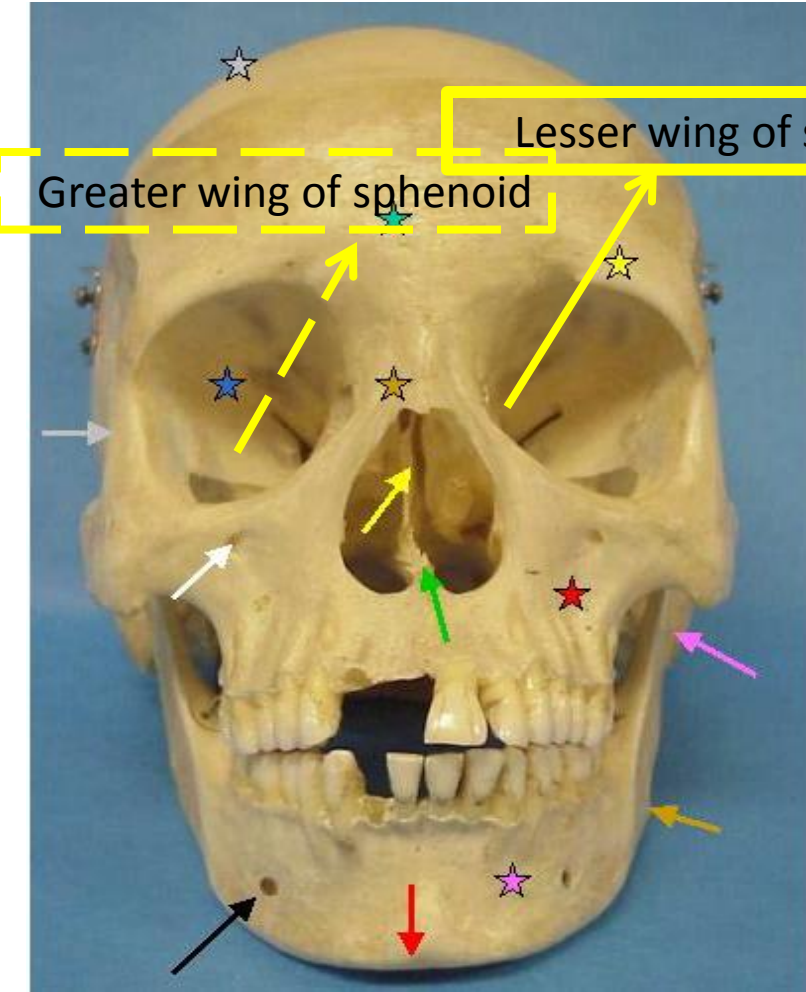
Anterior clinoid processes in the lesser wing

Posterior clinoid processes

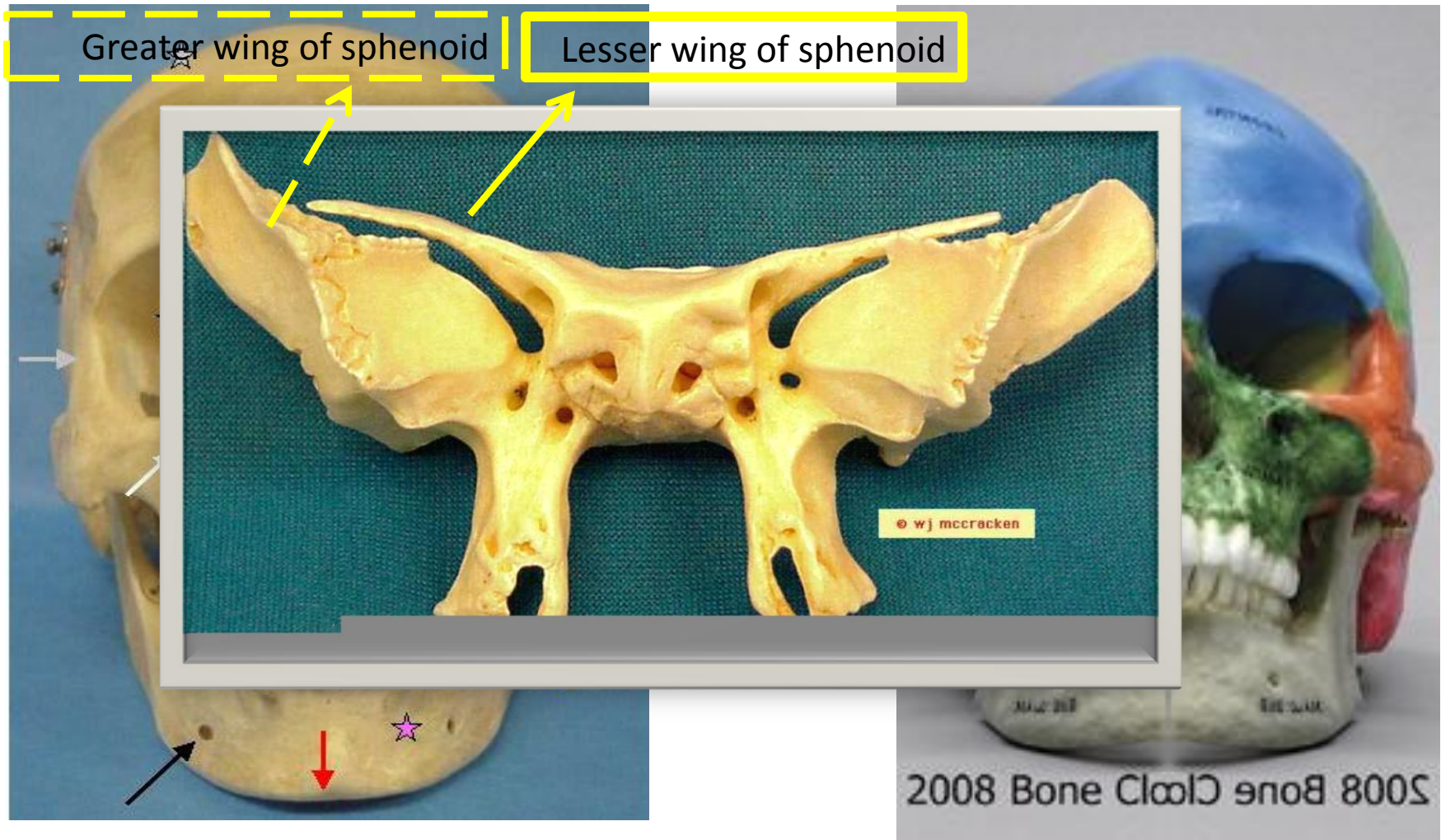


Sella turcica

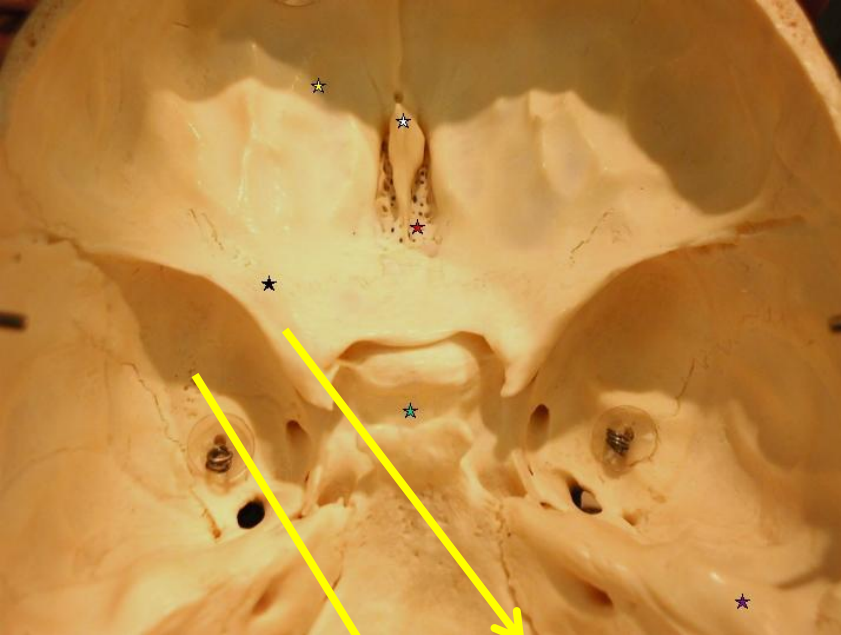




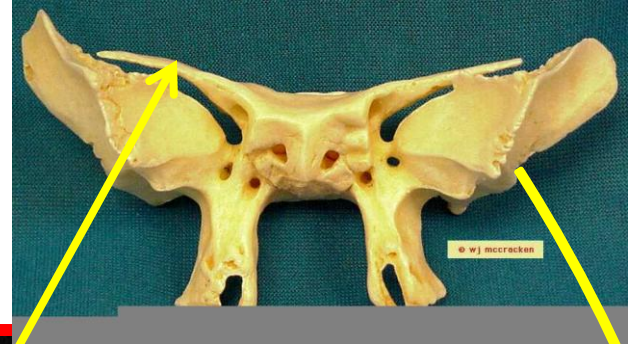
# Sphenoid anterior view



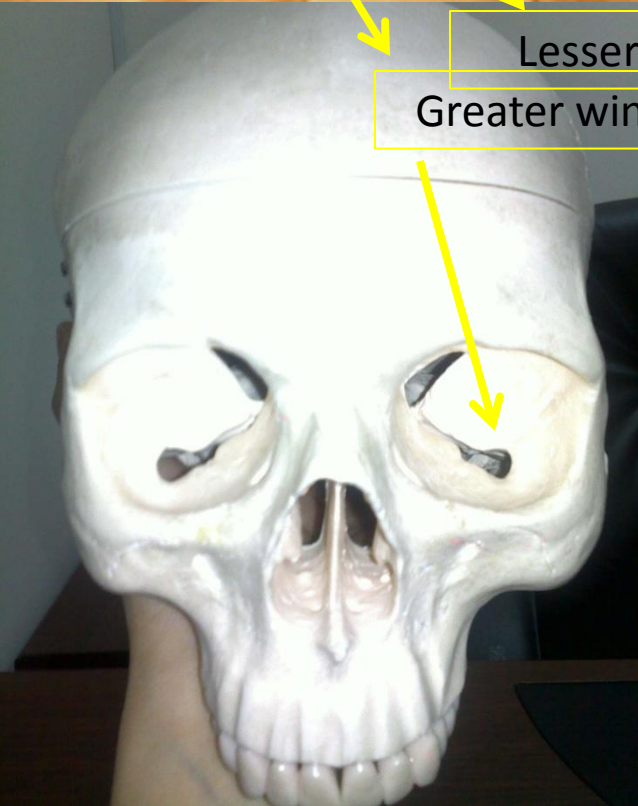
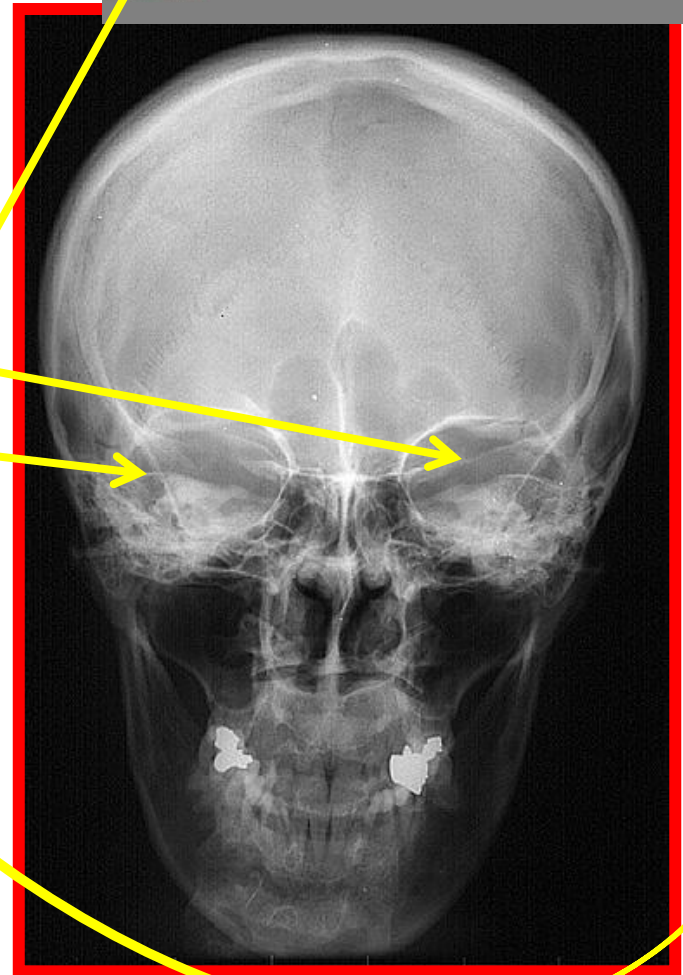




PA

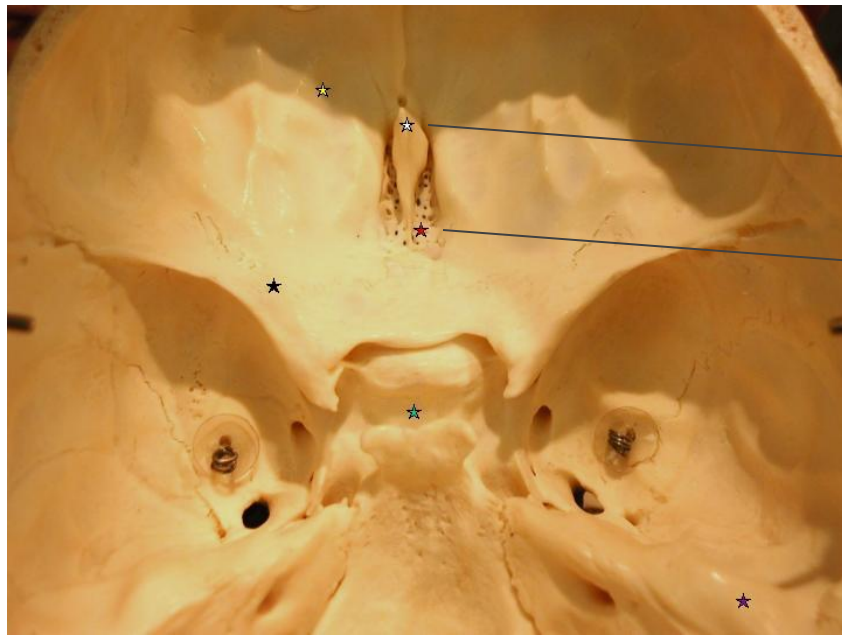
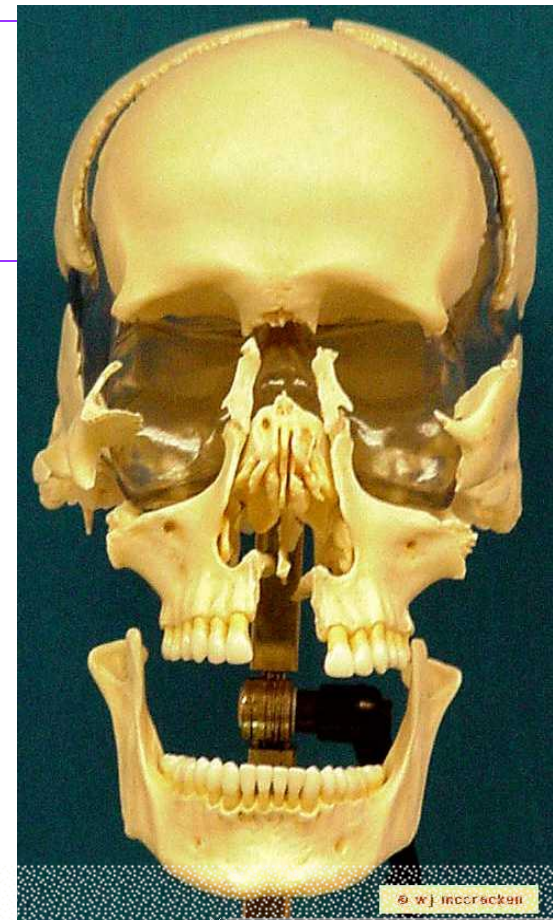


Lesser wing of sphenoid  
Greater wing of sphenoid

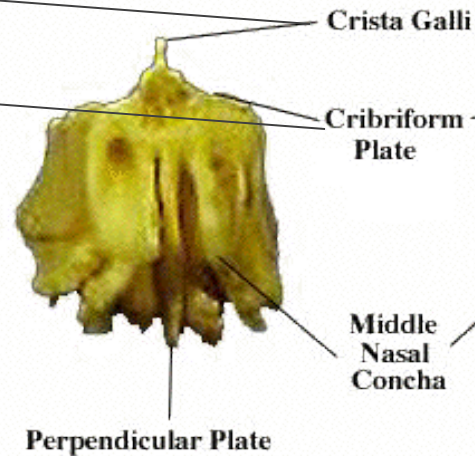




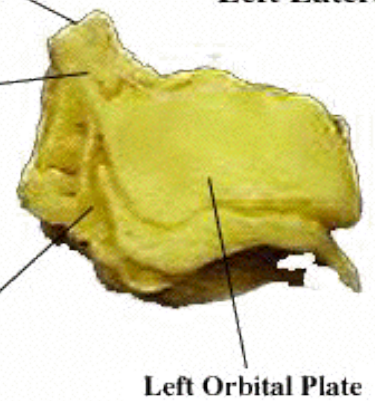
# Ethmoid



**Anterior View**

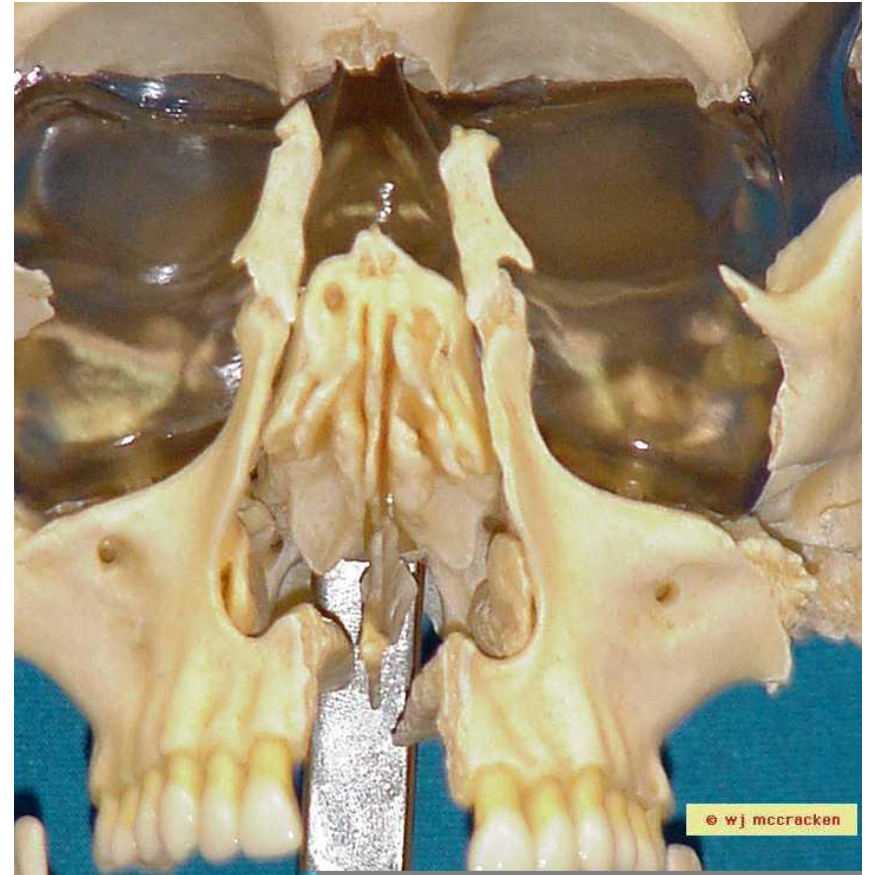
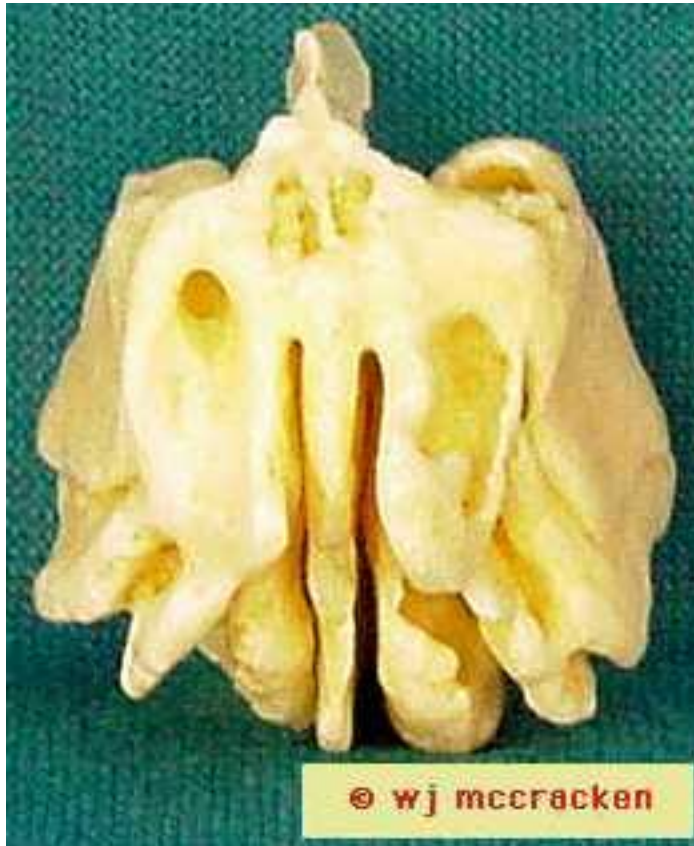


**Left Lateral View**

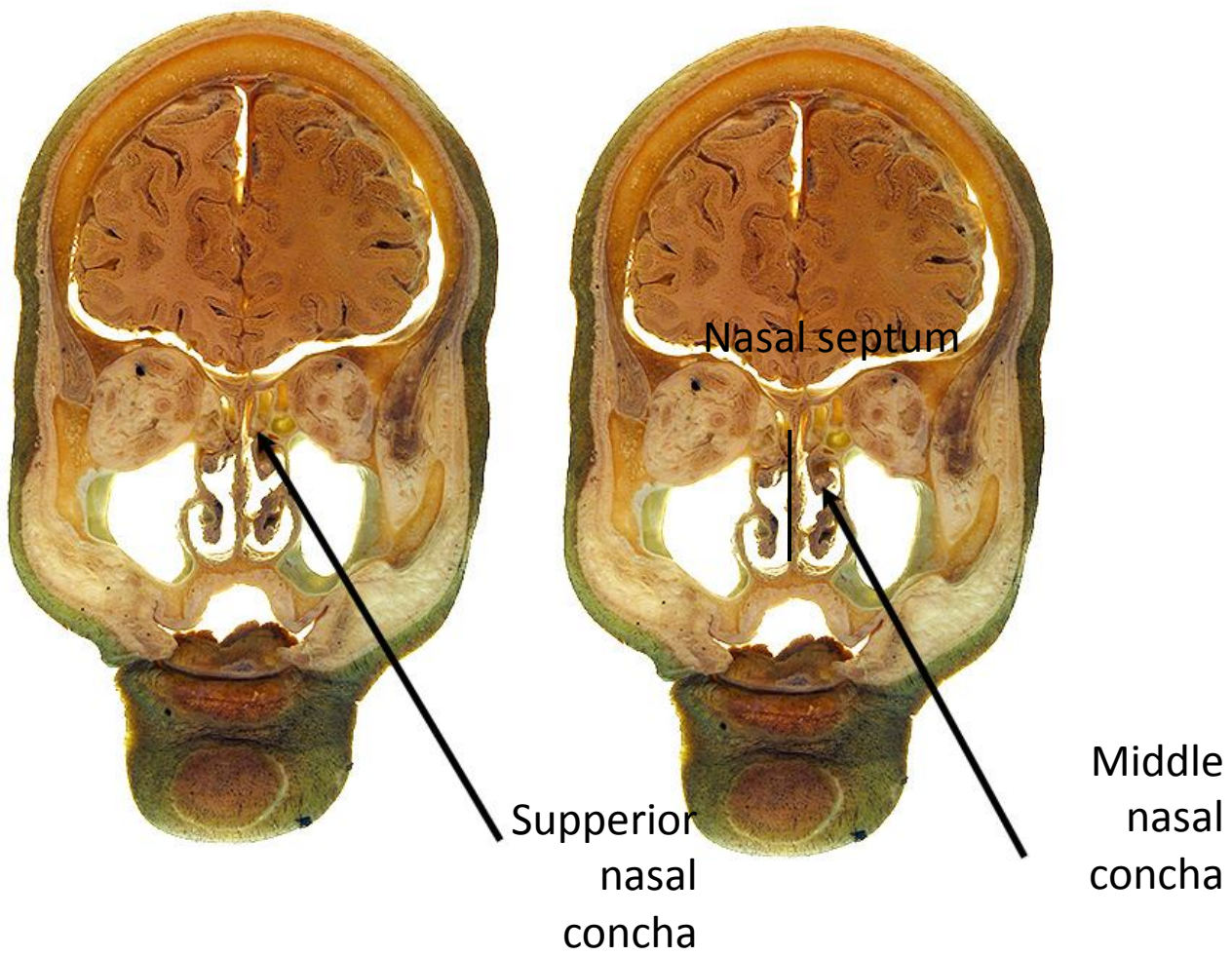


**Left Orbital Plate**

# Ethmoid



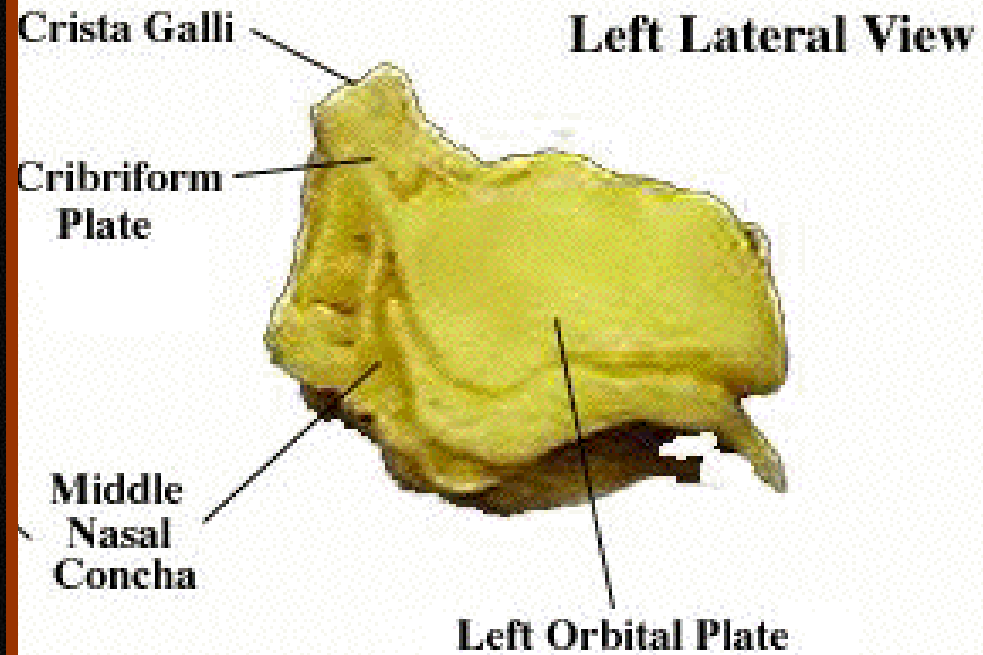
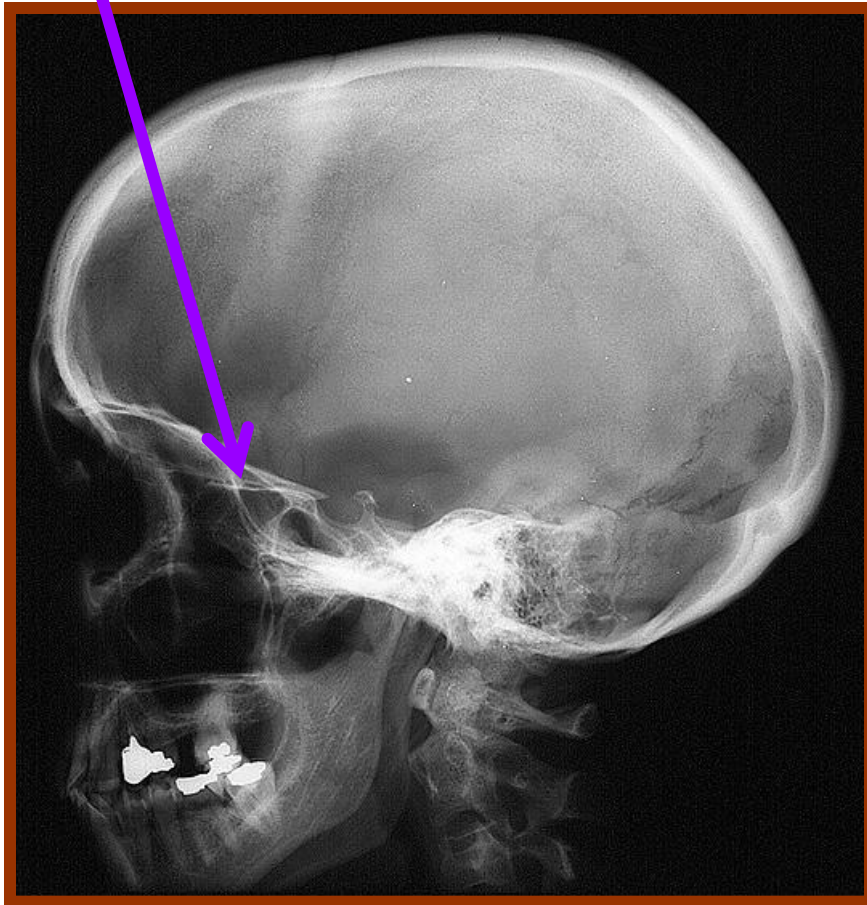




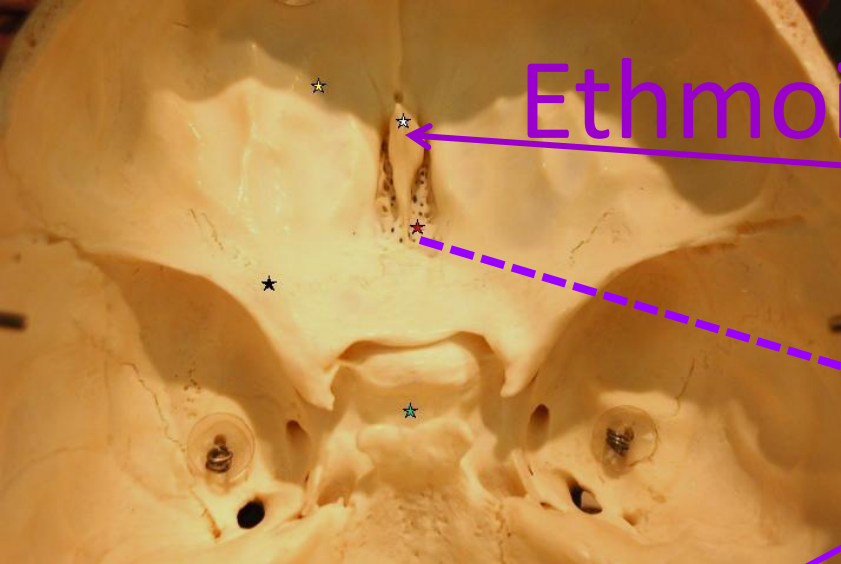


Cribriform plate

# Ethmoid in Skull Lateral View

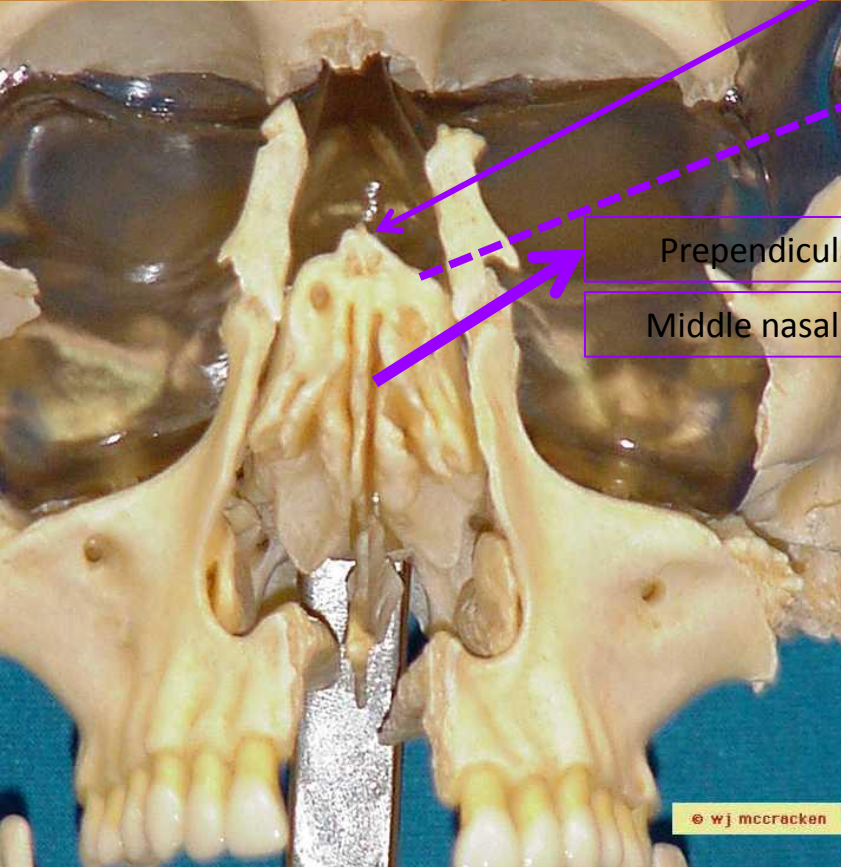


# Ethmoid in PA view



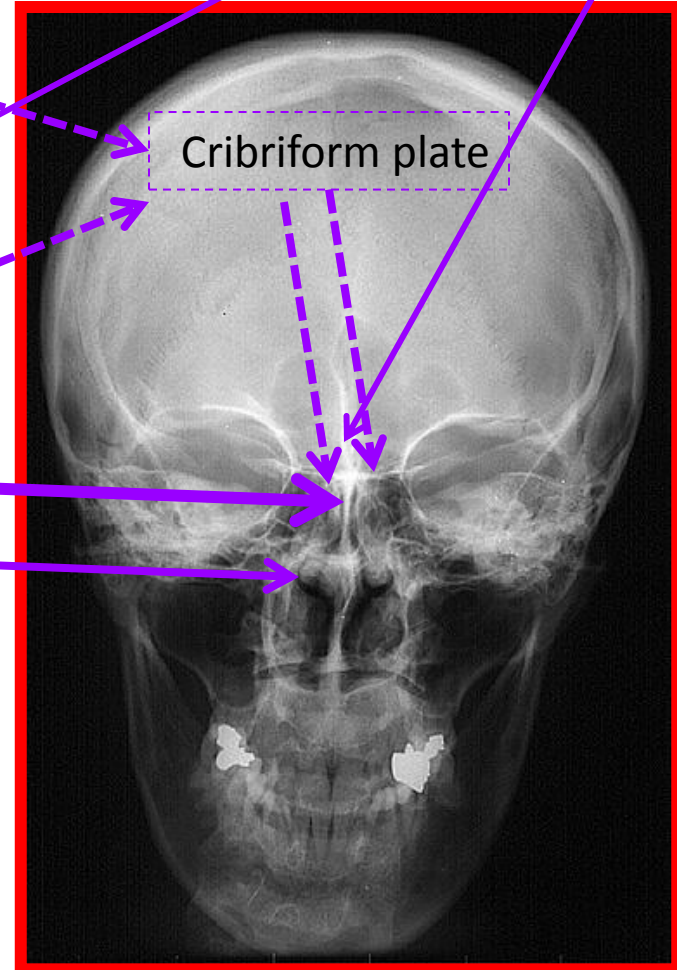
Crista galli of ethmoid

Cribriform plate



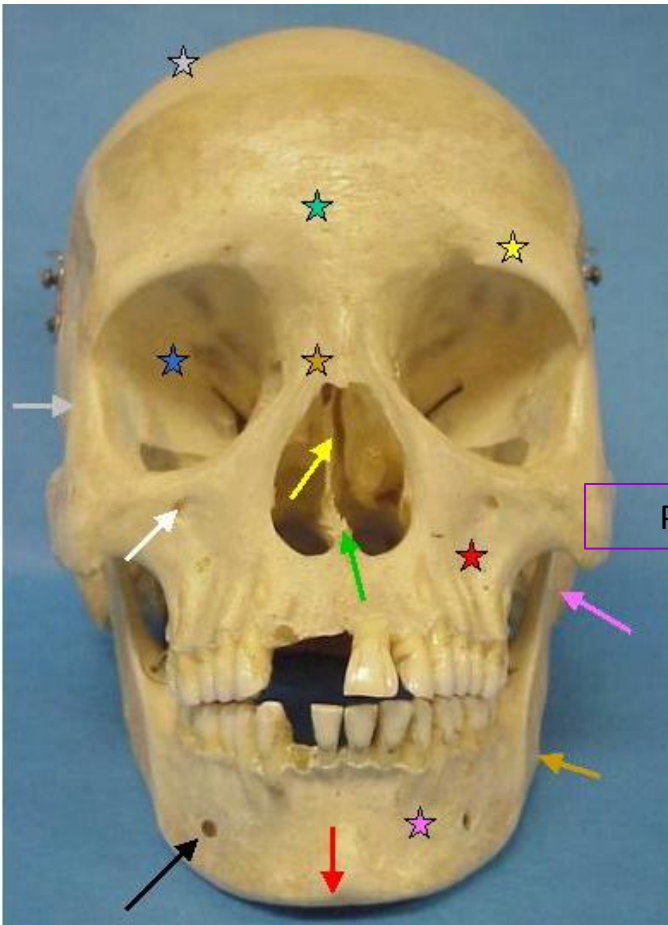
Perpendicular plate

Middle nasal concha



# Caldwell view

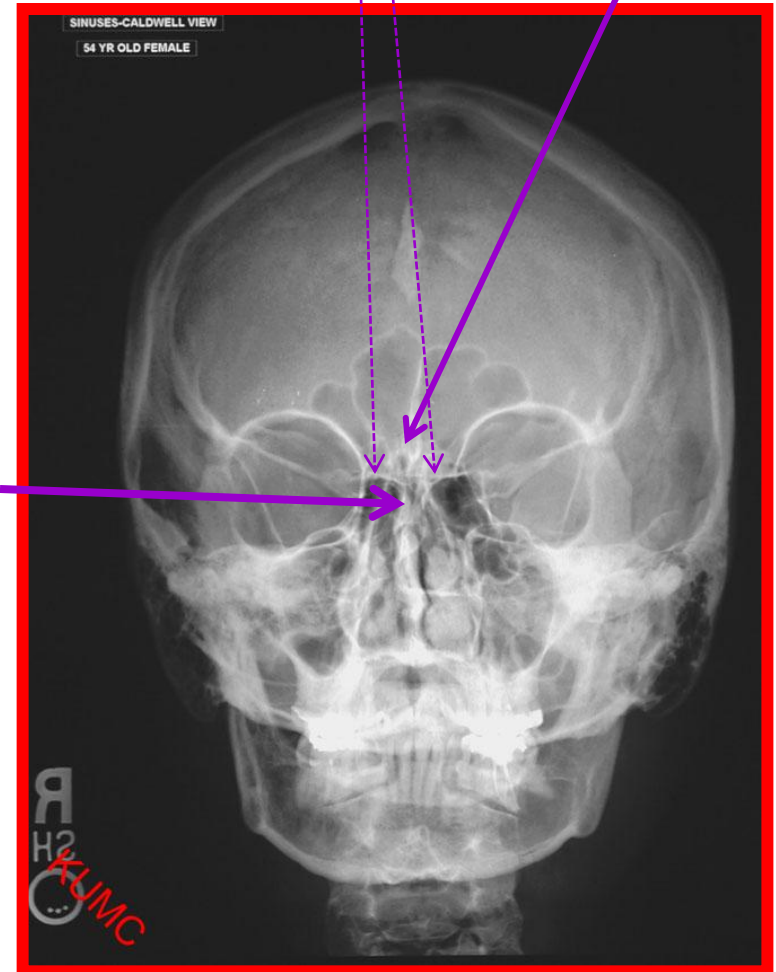
## PA with angle



Prependicular plate

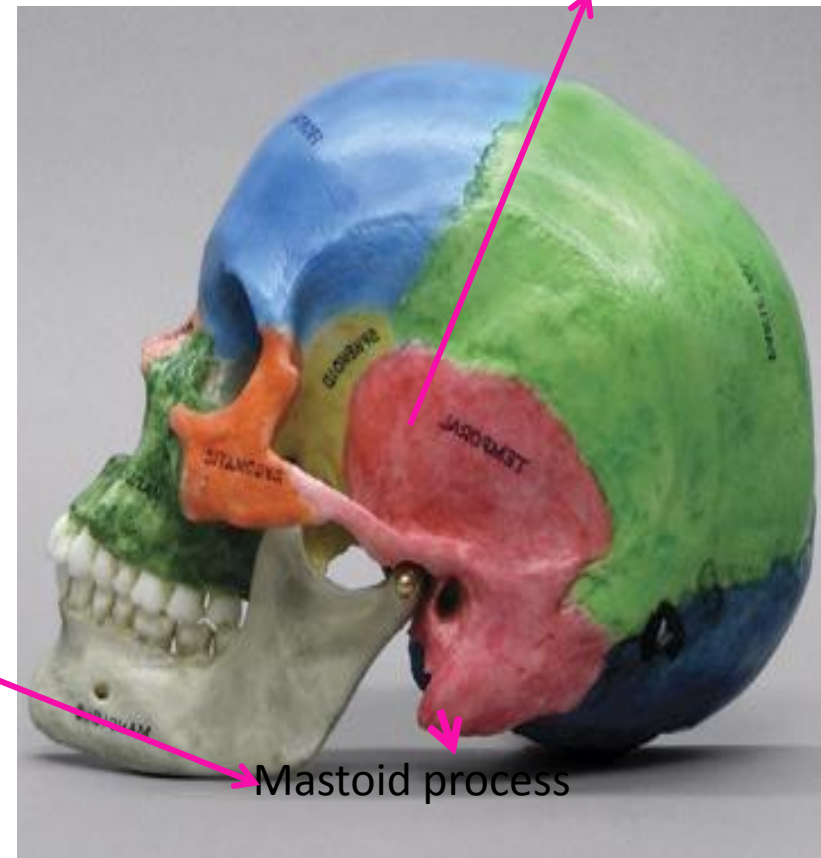
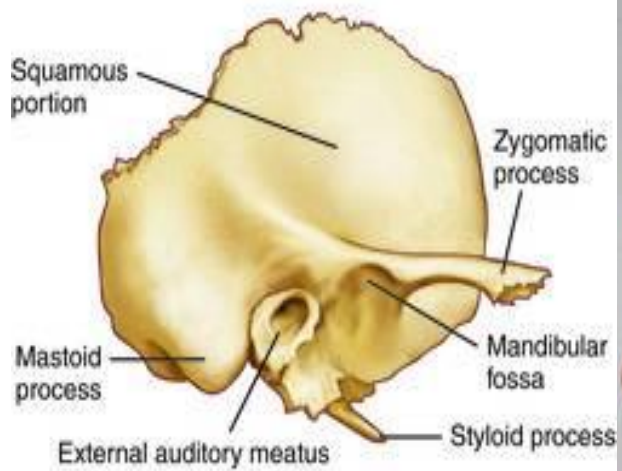
Crista galli of ethmoid

Cribriform plate





# Temporal



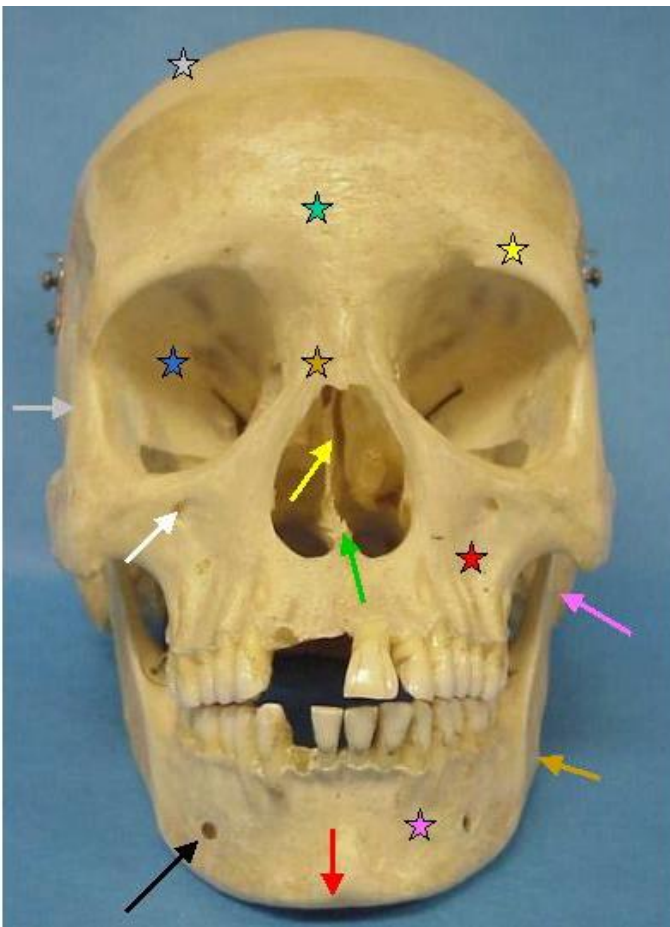
# PA



Mastoid Air cells

# Caldwell view

## PA with angle

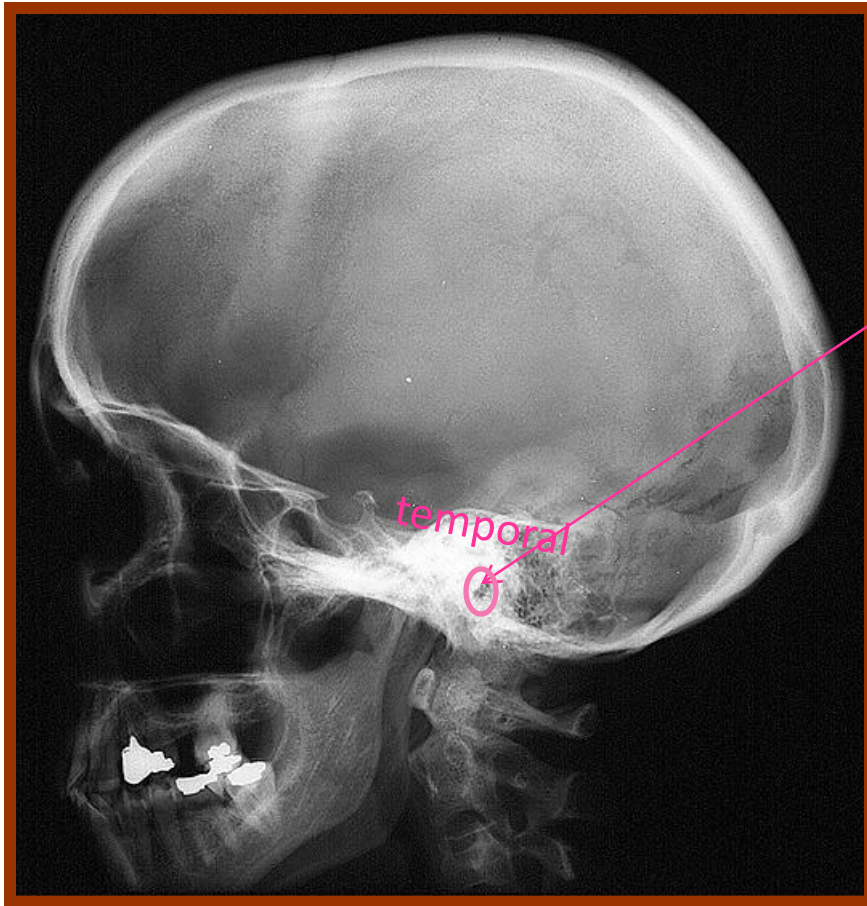


mastoid

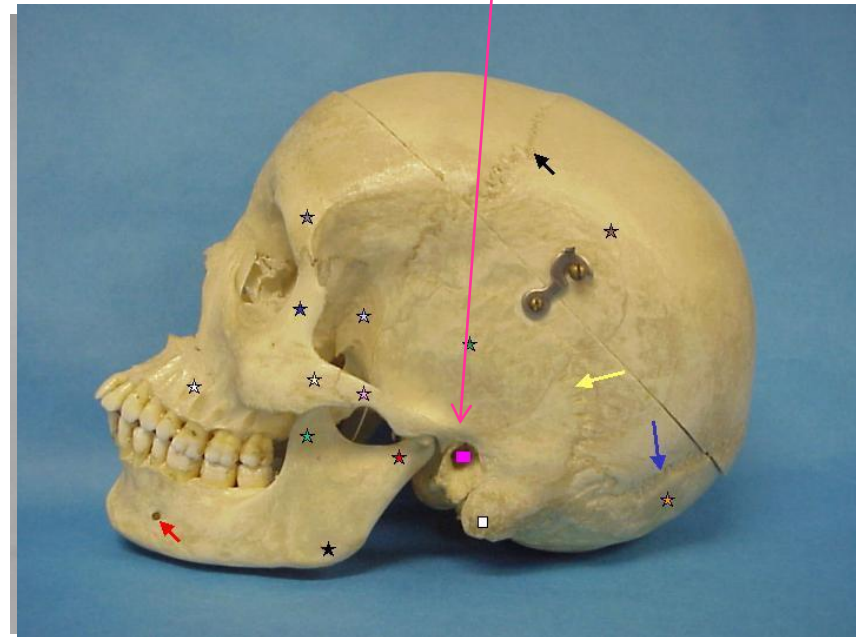
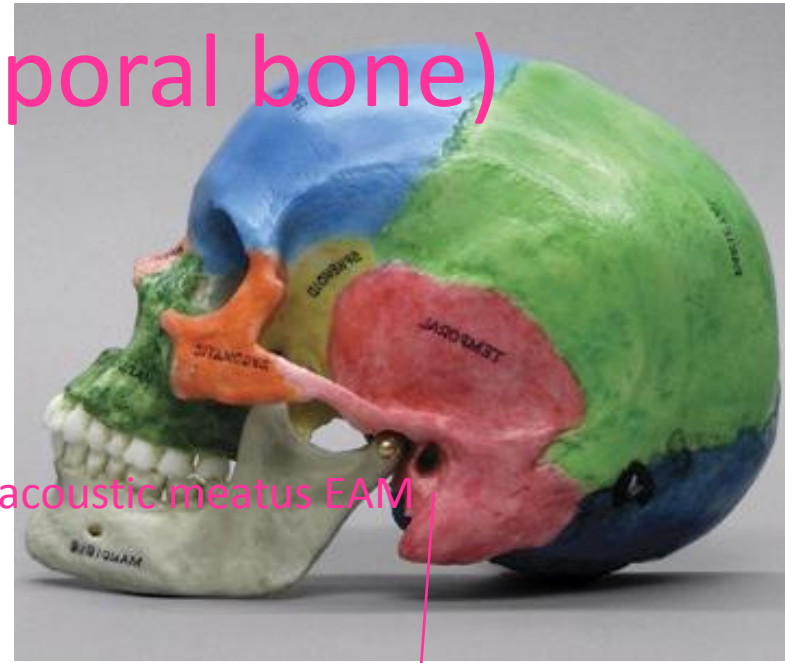




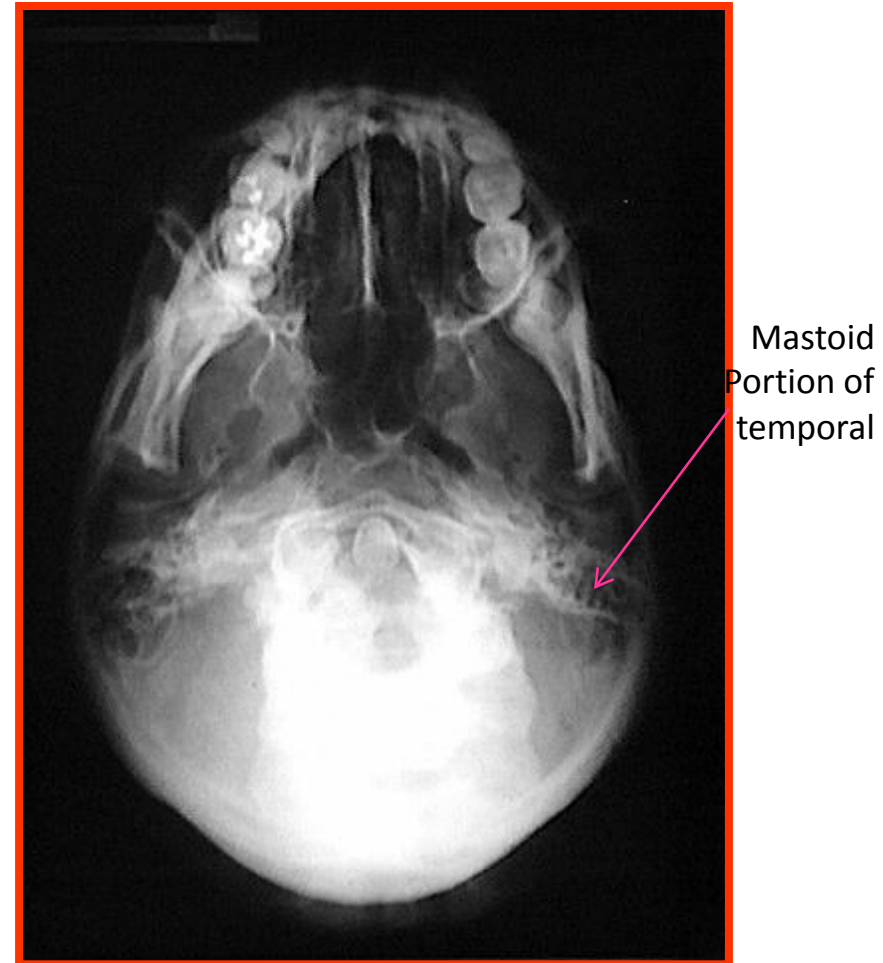
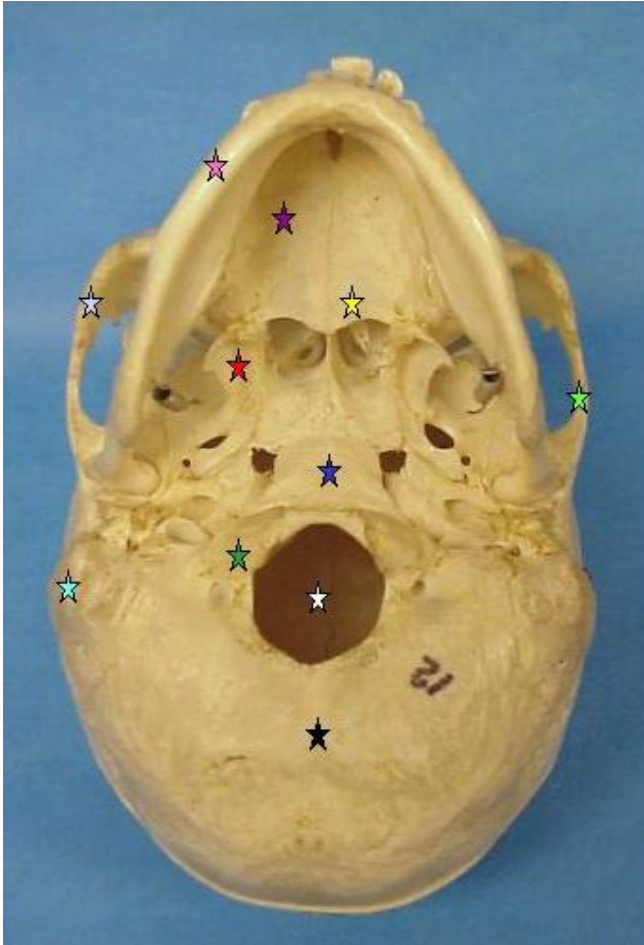
# SKULL LATERAL(temporal bone)

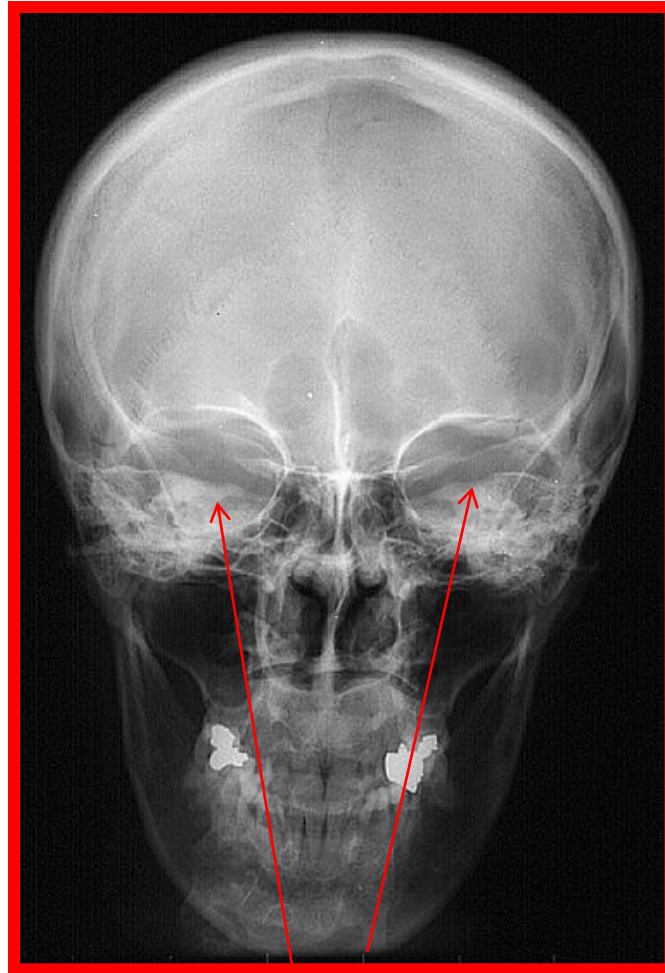


External acoustic meatus EAM



# Submentovertical view

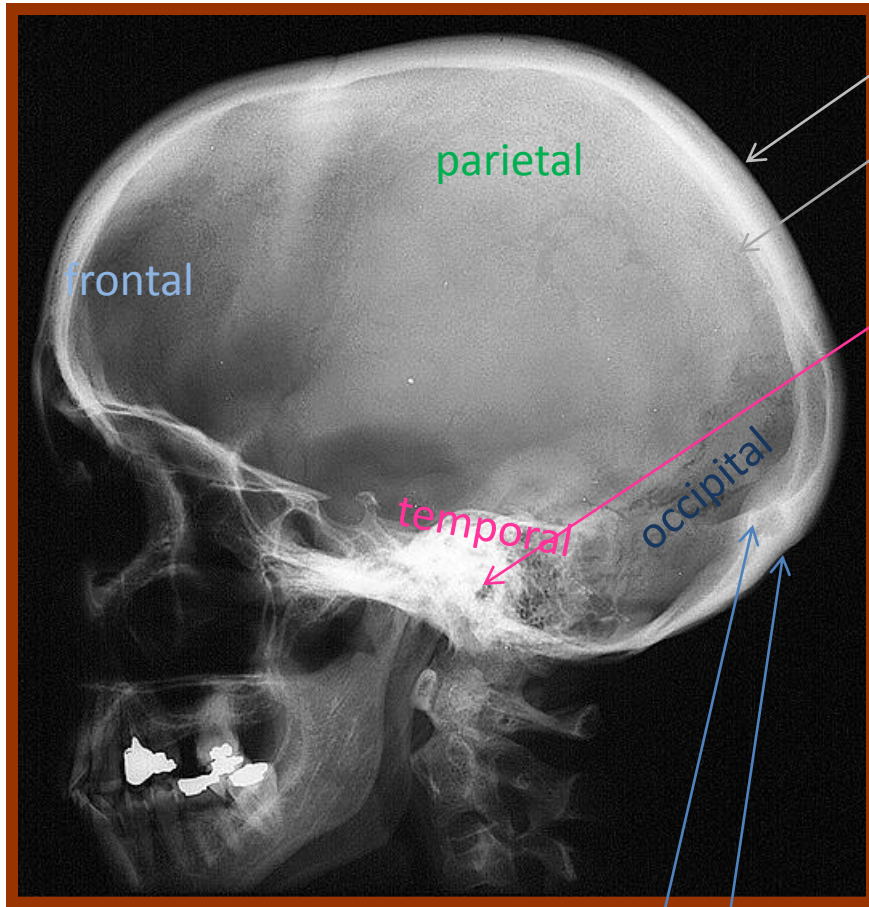




petrous portion in the temporal bone



# SKULL LATERAL



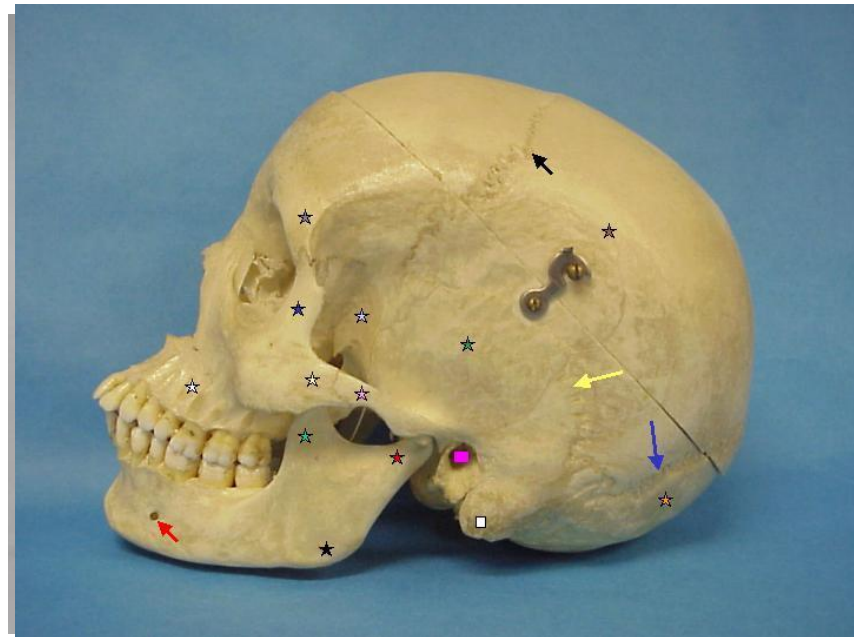
Internal occipital protuberance

External occipital protuberance

Outer table

Inner table

External acoustic meatus EAM

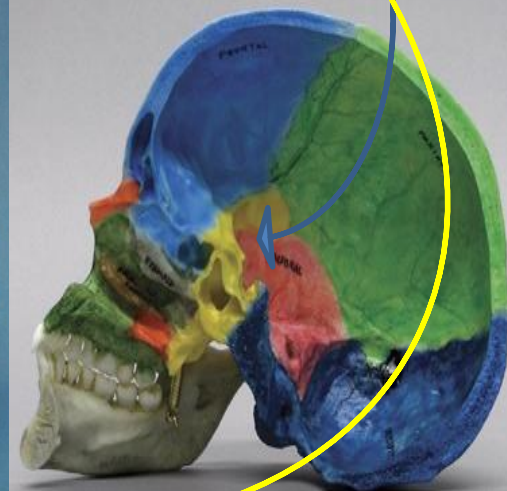
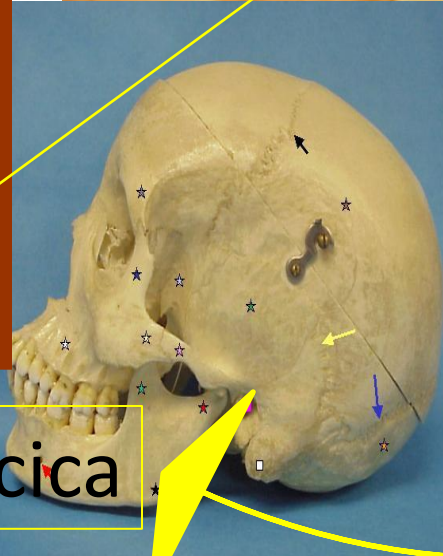
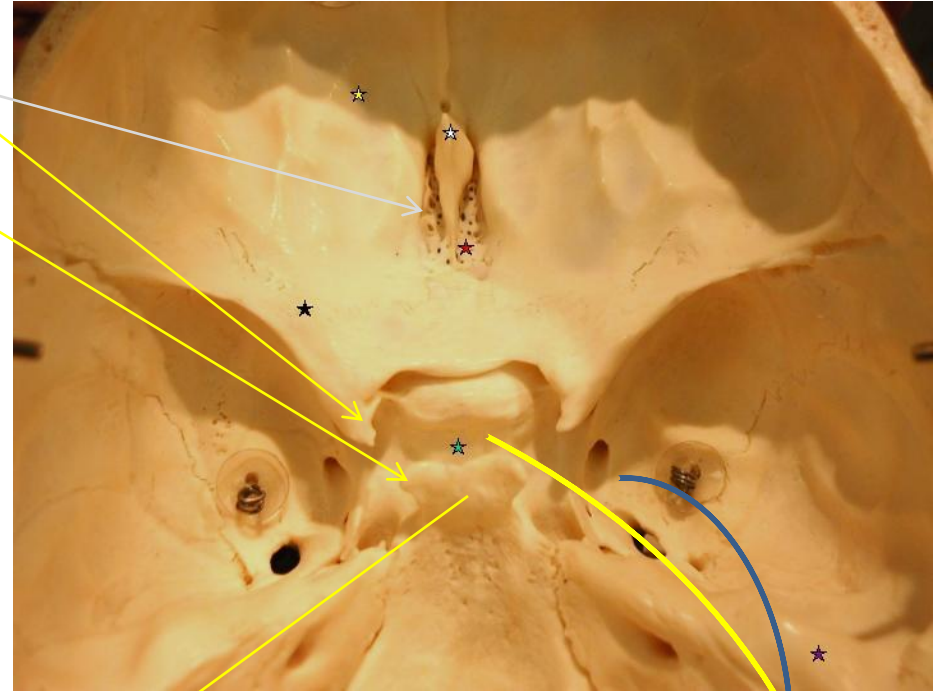
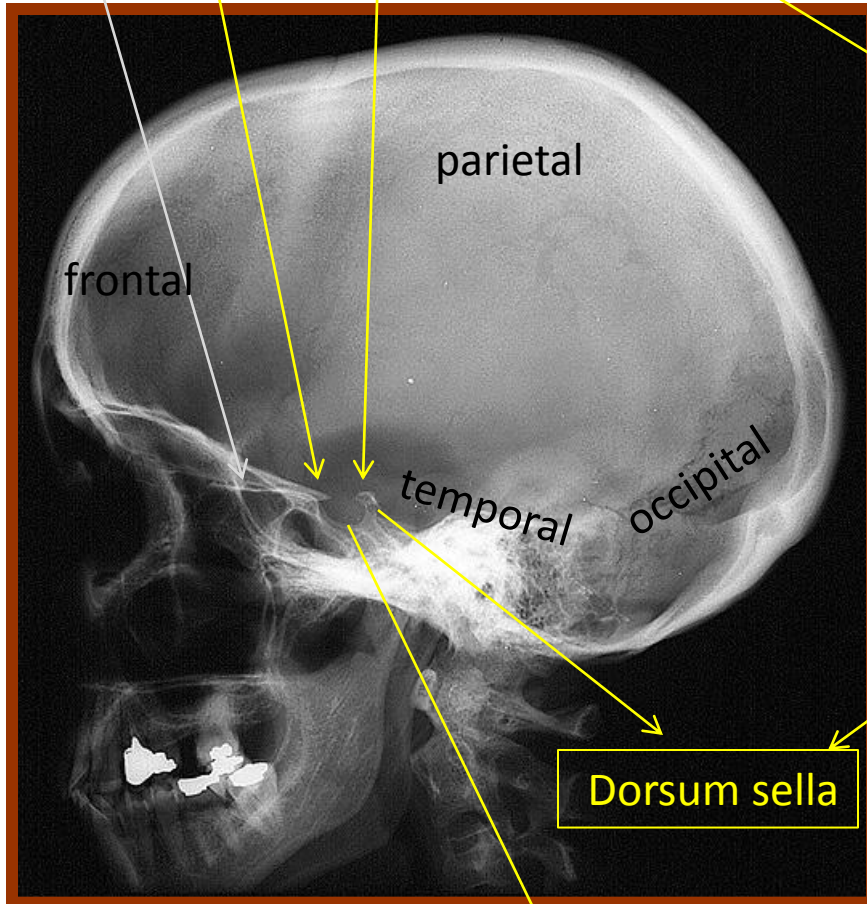


Cribriform plate

# SKULL LATERAL

Anterior clinoid processes in the lesser wing

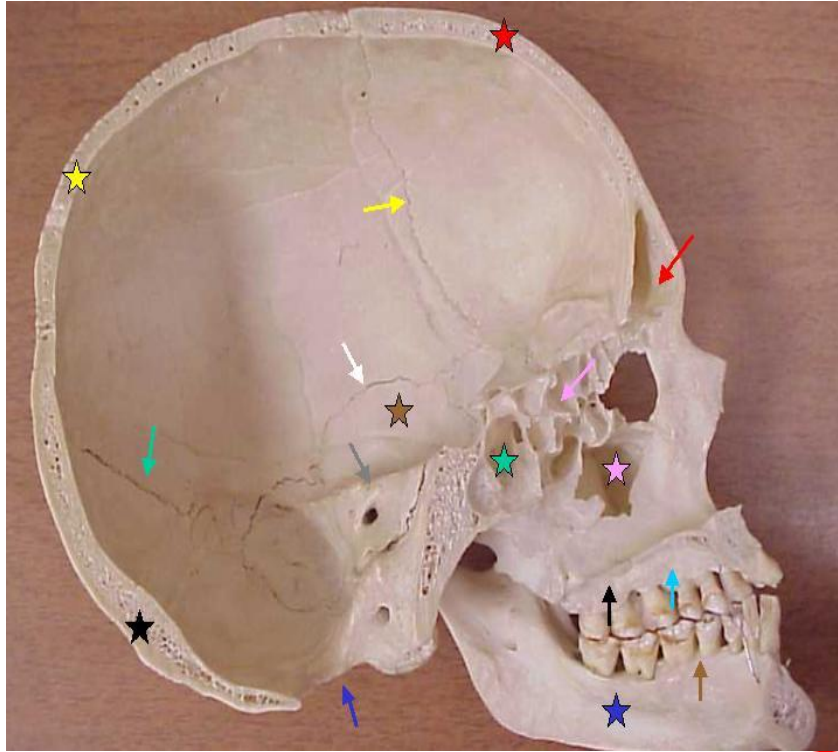
Posterior clinoid processes



Sella turcica



# Skull lateral

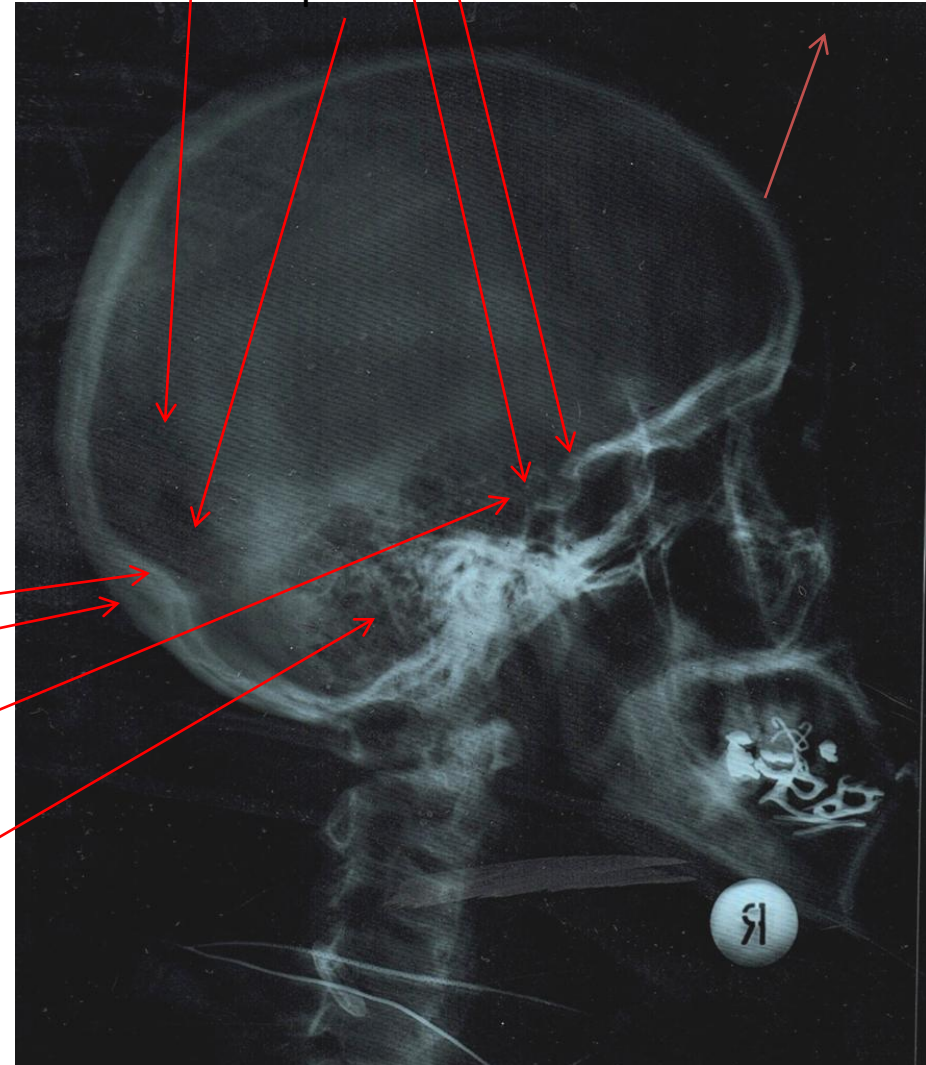


Lambdoid suture

Posterior clinoid processes  
Anterior clinoid processes

Frontal bone

occipital bone



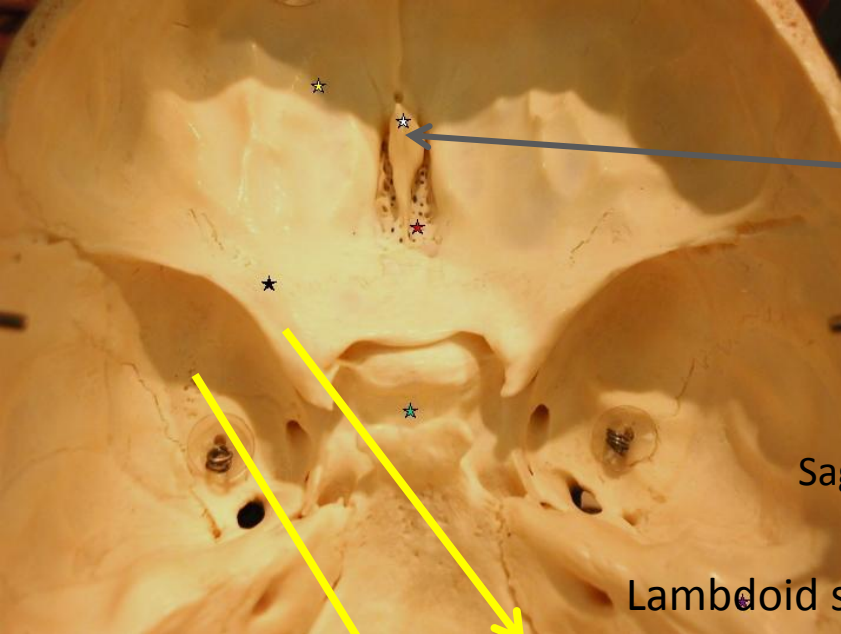
Internal occipital protuberance

(inion) External occipital protuberance

Dorsum sella

Mastoid portion of temporal





PA

Supraorbital margin

Crista galli of ethmoid

Sagittal suture

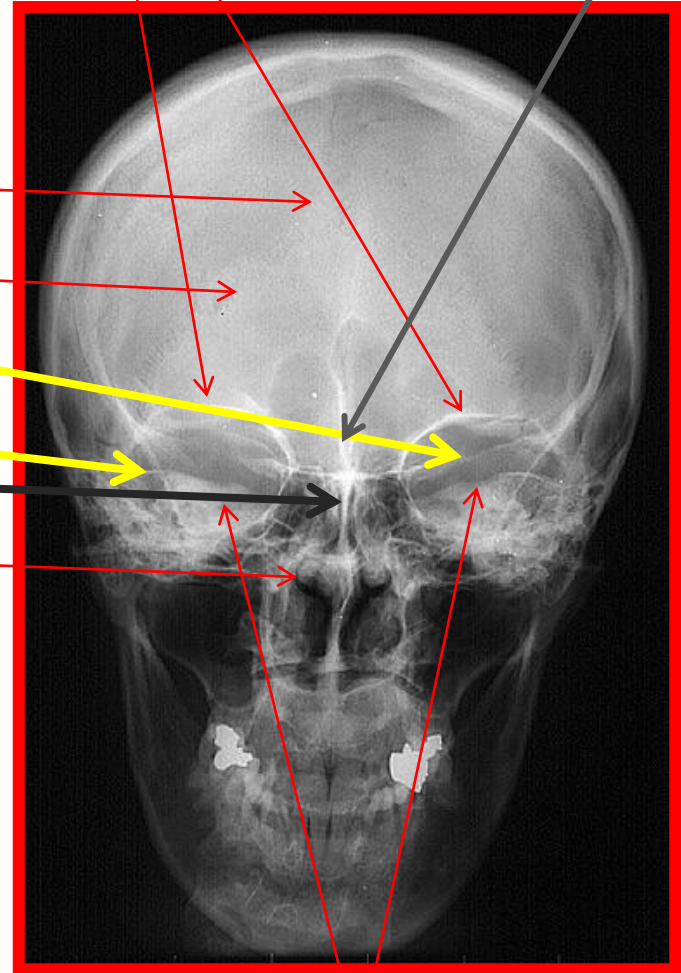
Lambdoid suture

Lesser wing of sphenoid

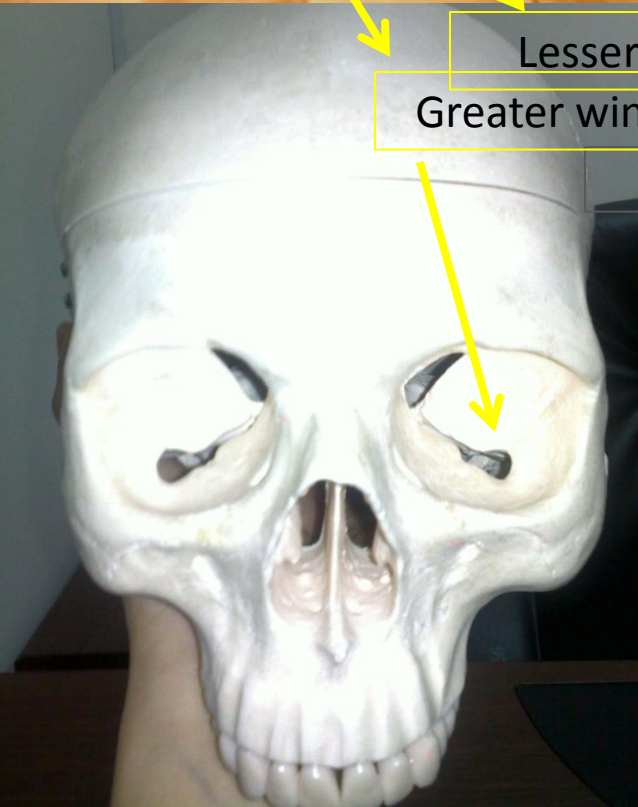
Greater wing of sphenoid

Perpendicular plate

Middle nasal concha



Petrous ridge



**THANK YOU**