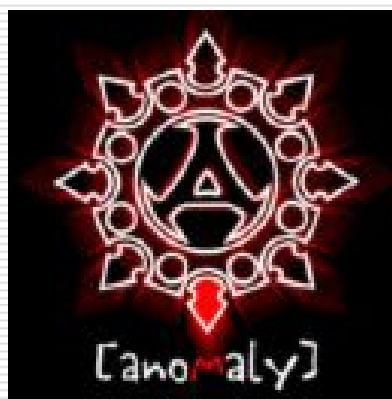
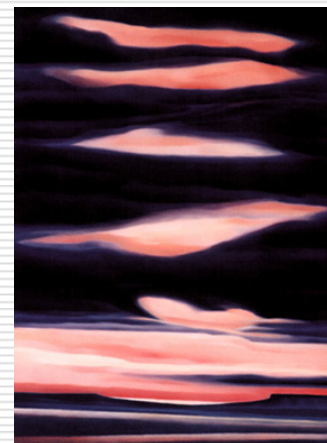
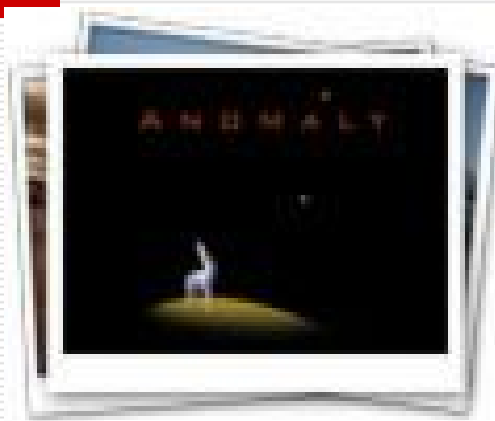


TWO DIMENSIONAL DESIGN

CHAPTER 8: ANOMALY

Dr. Hatem Galal A Ibrahim



Definition

- . Anomaly is the presence of irregularity in a design in which regularity still prevails.
- It marks a certain degree of departure from the general conformity, resulting in slight or considerable interruption of the overall discipline.
- Sometimes anomaly is just a singular element among uniform organization.
- Examples of anomaly around us are common: flowers among foliage, the moon in a starry night, cracks on a plain wall, an old church among modern skyscrapers.

Definition

In design, the use of anomaly has to be of genuine necessity. It must have a definite purpose, which may be one of the following:

To attract attention - When anomaly is used sparingly, it tends to stand out and attract immediate attention. Center of interest can be created if anomaly happens only within a restricted area of the design.

To relieve monotony - Plain regularity can be monotonous. Anomaly is able to generate movement and vibration. Anomalous areas in this case should be scattered either casually or systematically all over the design.

Definition

To transform regularity - One kind of regularity can be transformed into another. Here anomaly is just a change of discipline.

To break down regularity - Regularity can be completely broken down into disorder in one or more areas. Anomaly seems to be more violent in this case, but the unity of the design should be maintained.

Anomaly among Unit Forms

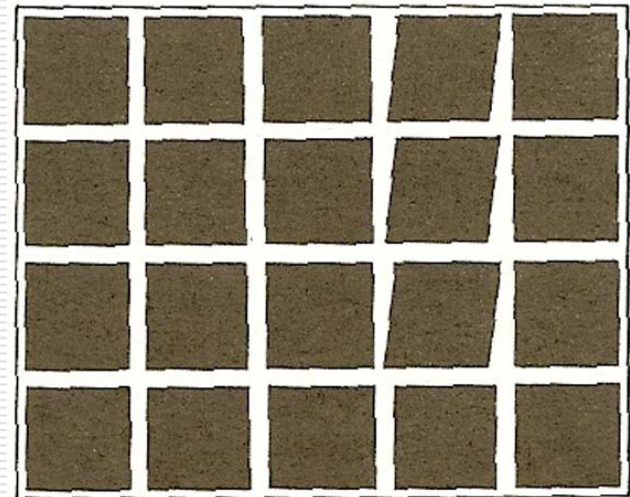
- Regularity exists among unit forms when they are related to each other under a certain kind of discipline, which may be repetition, similarity, or gradation.
 - However, if we consider all the visual and relational elements, the relationship of various unit forms can be rather complex.
 - Unit forms may be repetitive in all aspects, but they may also be repetitive only in certain elements and gradational in the remaining elements.
-

Anomaly among Unit Forms

Anomalous unit forms can attract attention in one or more of the following ways:

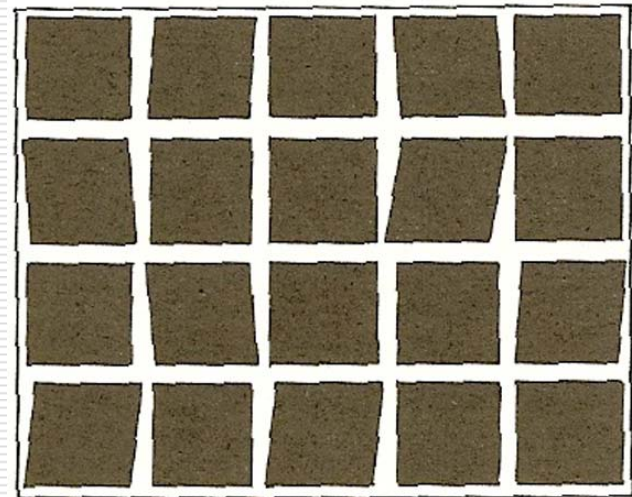
- a. The anomaly is prominent;
- b. All anomalous unit forms appear within a restricted area;
- c. There are only a few of these anomalous unit forms (or there is only one).

Concentrated anomaly normally becomes the center of interest in a design.



Anomaly among Unit Forms

- ❑ Anomaly relieves monotony when the anomalous unit forms appear quite frequently, scattering over a wide area.
- ❑ They can be fairly indistinct, occurring as minor distortions or transfigurations of the regular unit forms.
- ❑ Their placement in the design can be orderly or casual, generating movements.



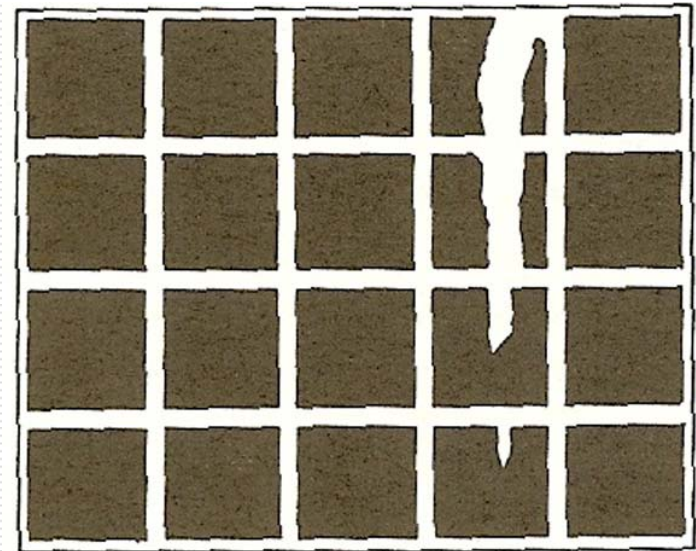
Anomaly among Unit Forms

- ❑ Such anomalous unit forms are not just related to each other regularly, but are also arranged regularly.
- ❑ This is like merging or annexing two different groups of regular unit forms.
- ❑ The minority group is an anomaly in terms of the majority, but sometimes such distinction may be rather vague.



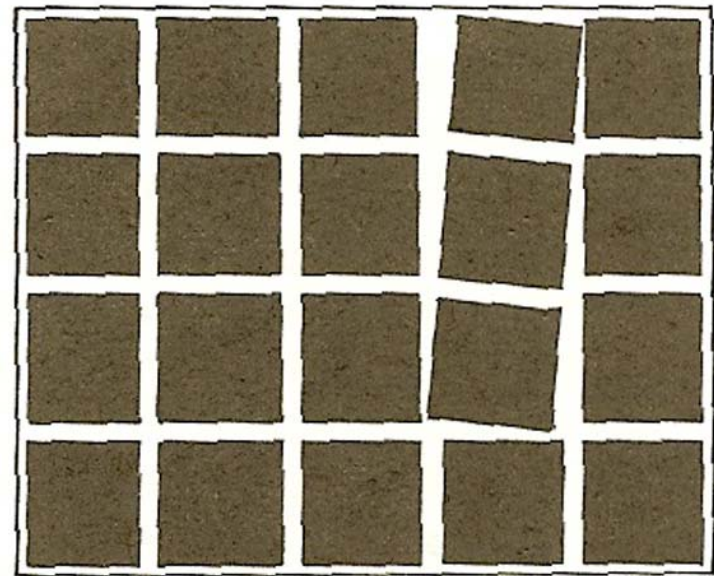
Anomaly among Unit Forms

Regularity can be broken down when unit forms in one or more areas appear to be torn, cracked, fractured, or dissolved. This can be more effective if the structure is also disrupted.



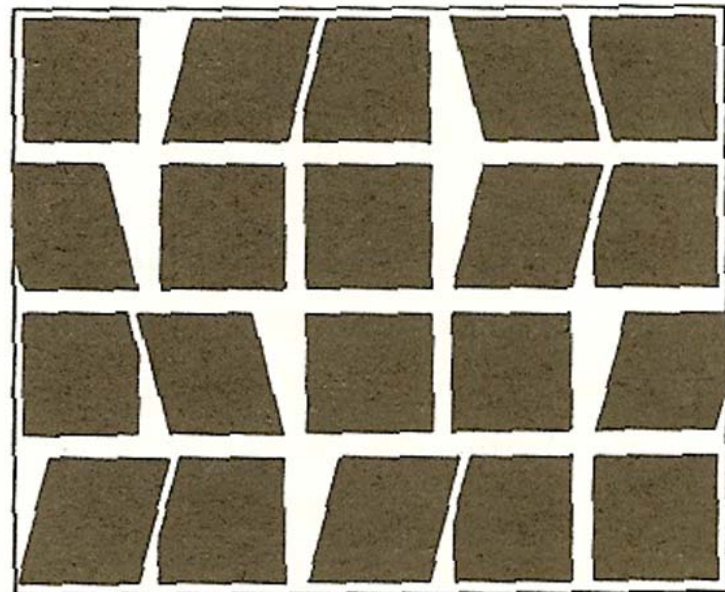
Anomaly within Structures

- ✓ Structural anomaly can attract attention when it happens quite noticeably within a restricted area.
- ✓ Even if all the visual elements of the unit forms stay unchanged, structural anomaly stretches or squeezes space which easily draws the eye to focus on.



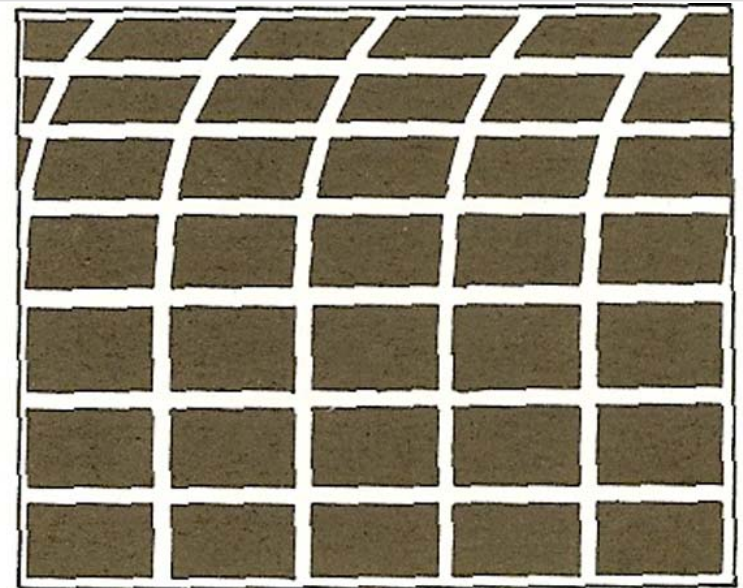
Anomaly within Structures

- ✓ Monotony in plain regularity can be relieved with frequent occurrence of anomalous structural subdivisions distributed in an orderly way or casually all over the design.
- ✓ This causes interesting variations of blank space and positioning of unit forms.



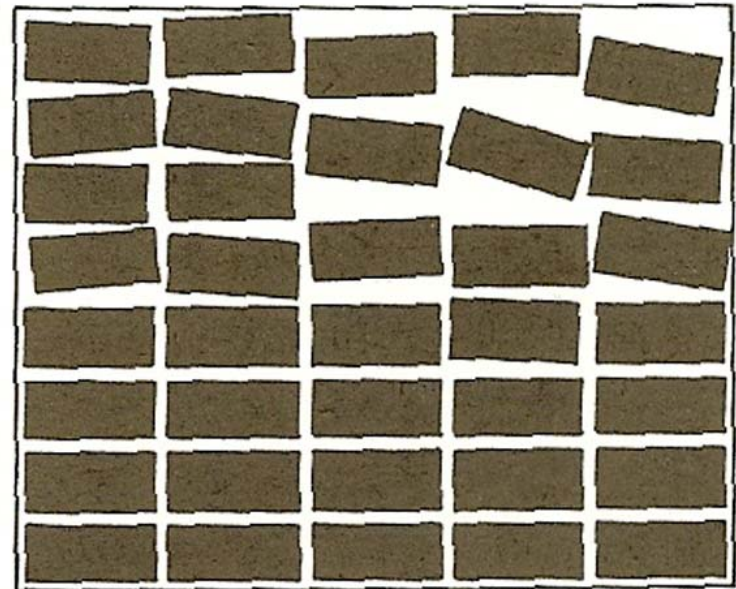
Anomaly within Structures

- ✓ The area or areas of anomaly may be just another kind of structural regularity different from the general discipline.
- ✓ Transformation of regularity can lead to exciting semi-formal compositions.

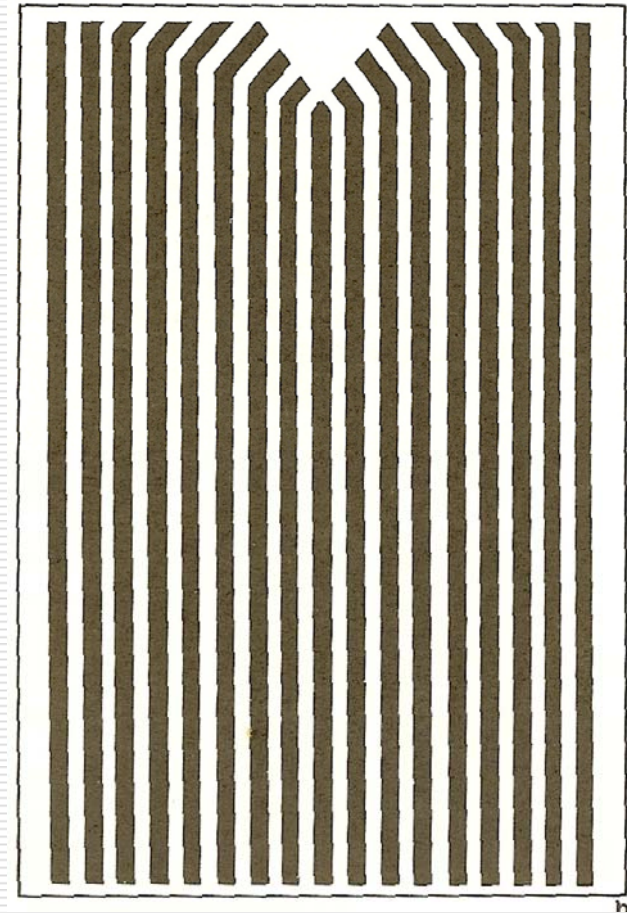
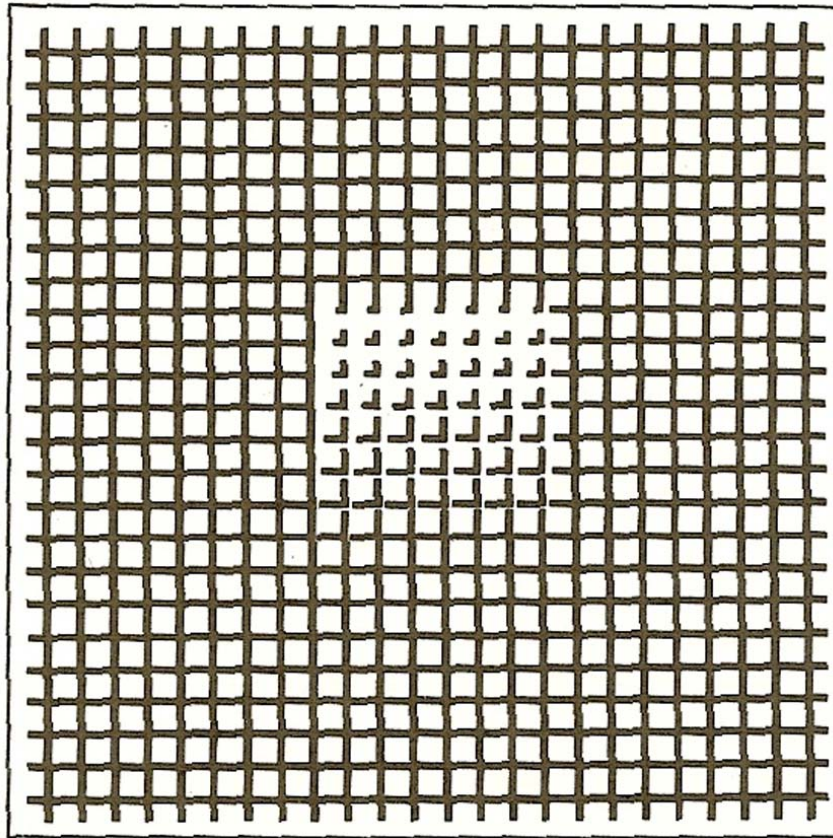


Anomaly within Structures

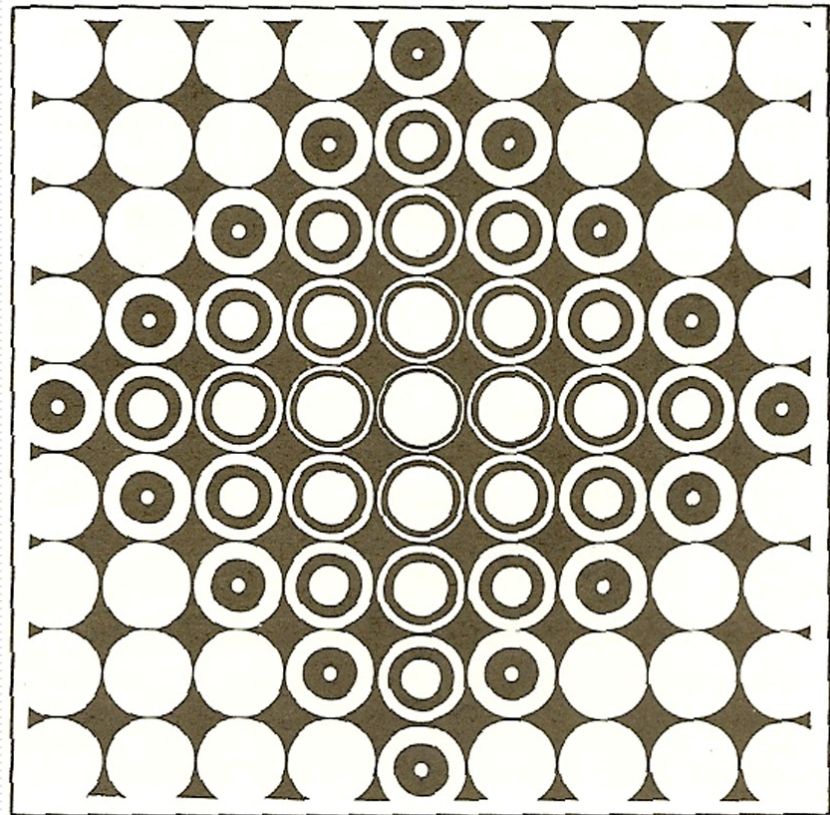
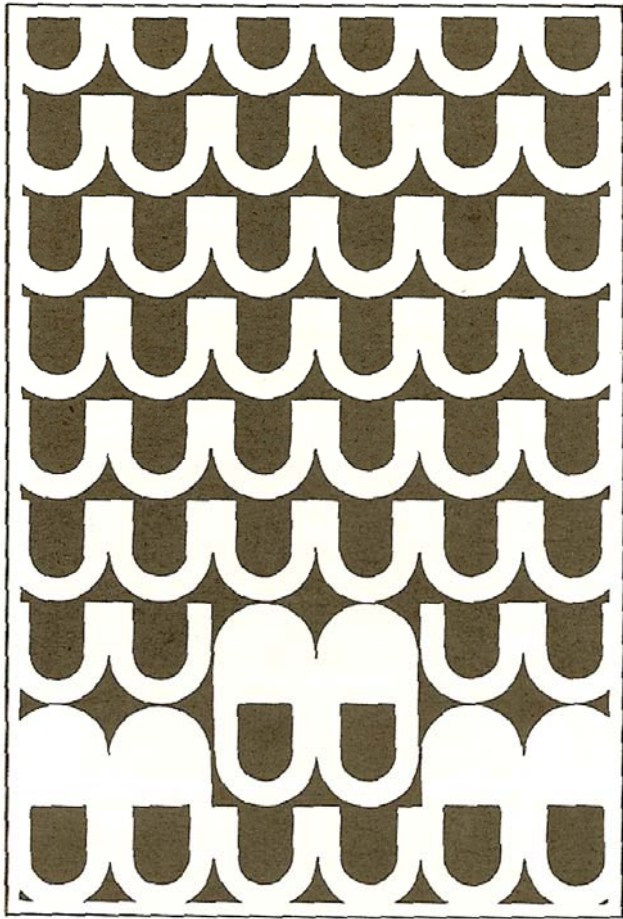
- ✓ Breakdown in a regular structure means that discipline is completely destroyed in one or more areas of anomaly.
- ✓ Structural lines get entangled, subdivisions distorted or dislocated, or the structure partially disintegrates.



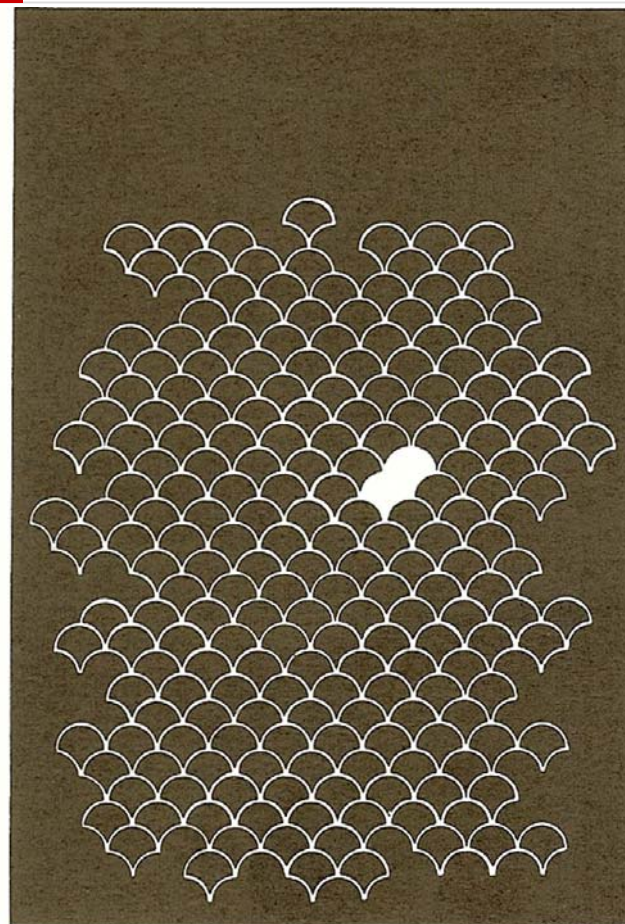
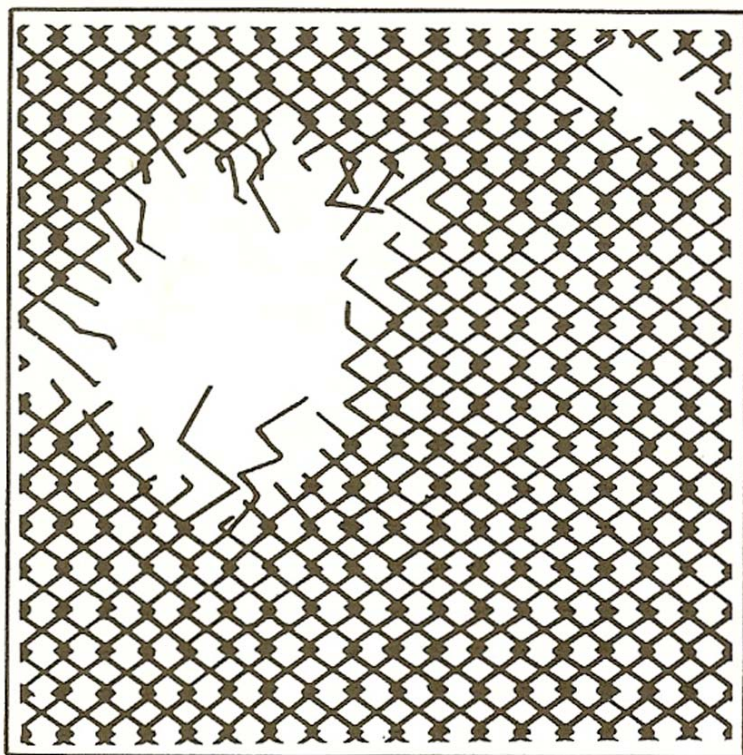
Exercises



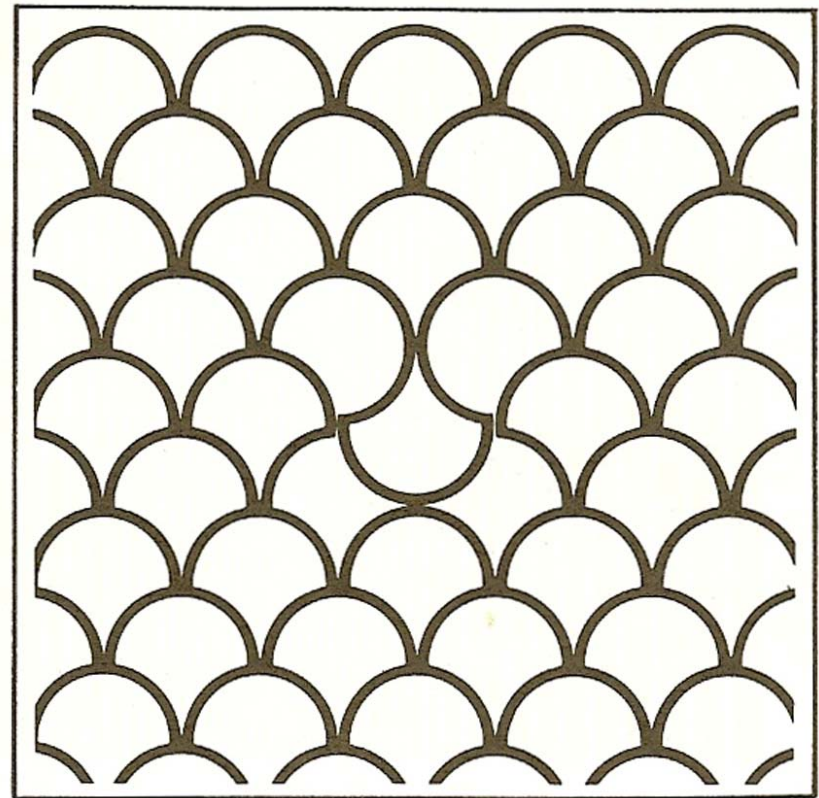
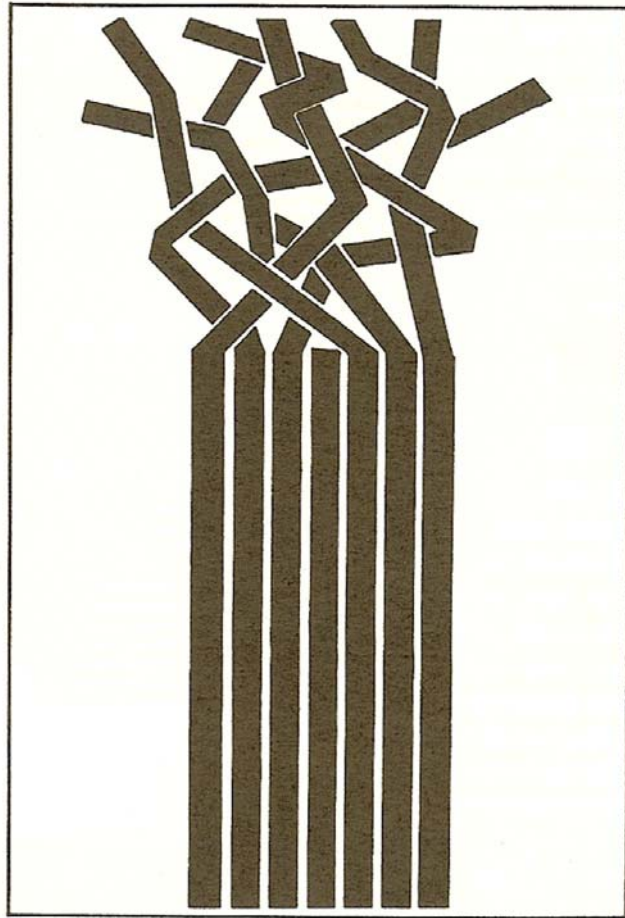
Exercises



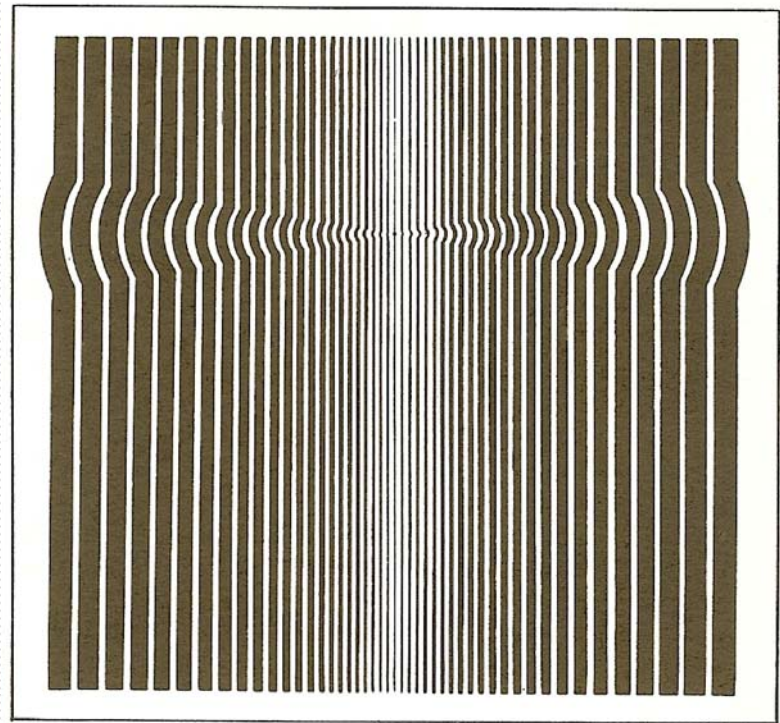
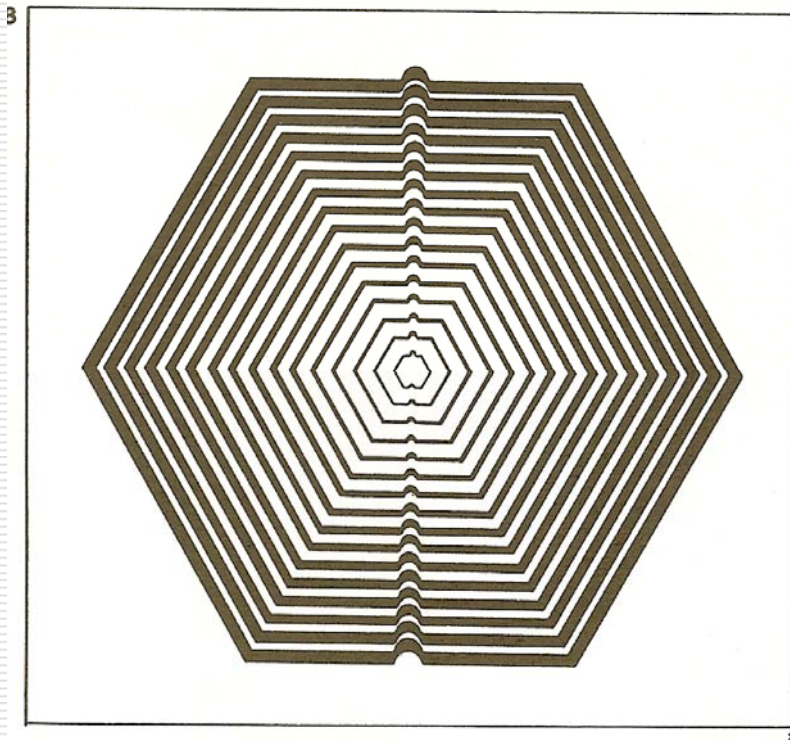
Exercises



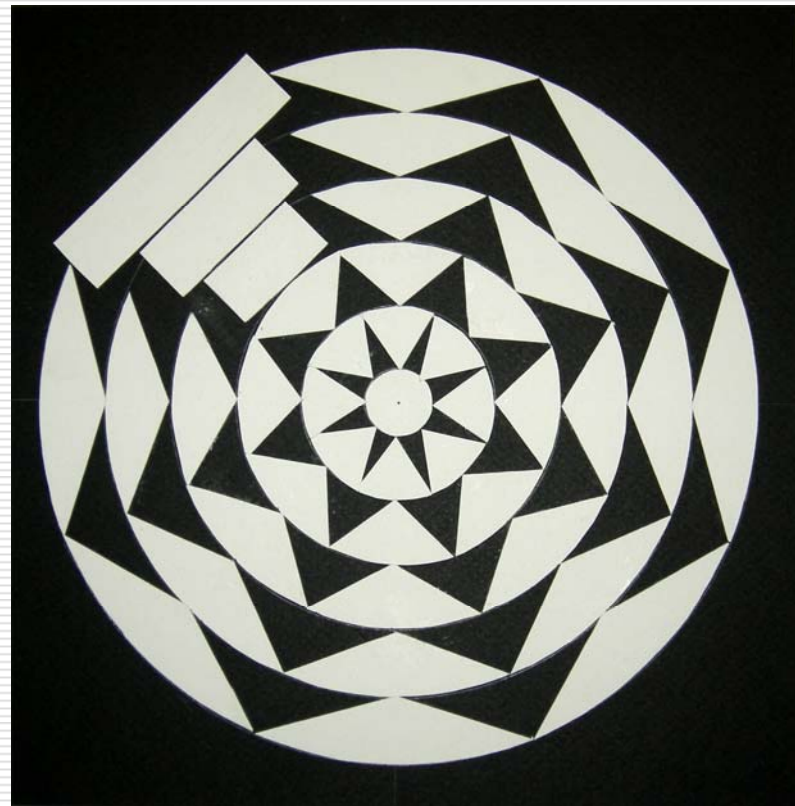
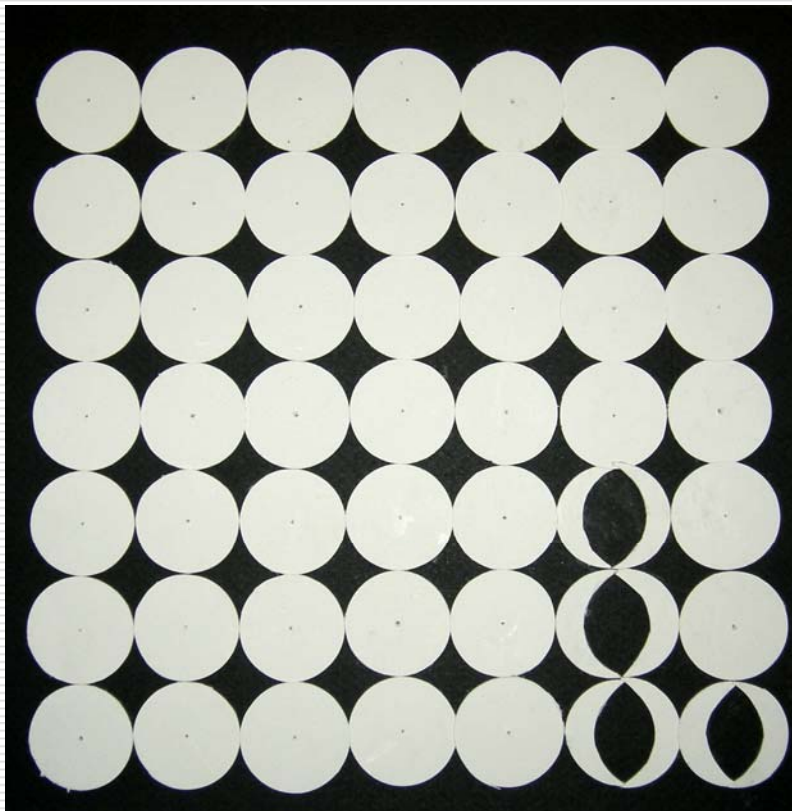
Exercises



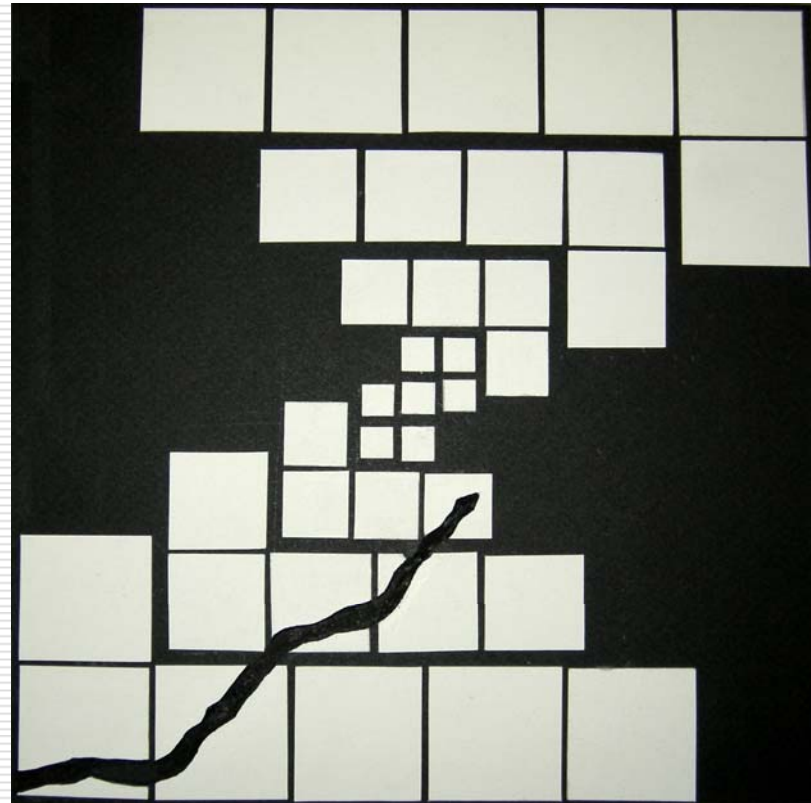
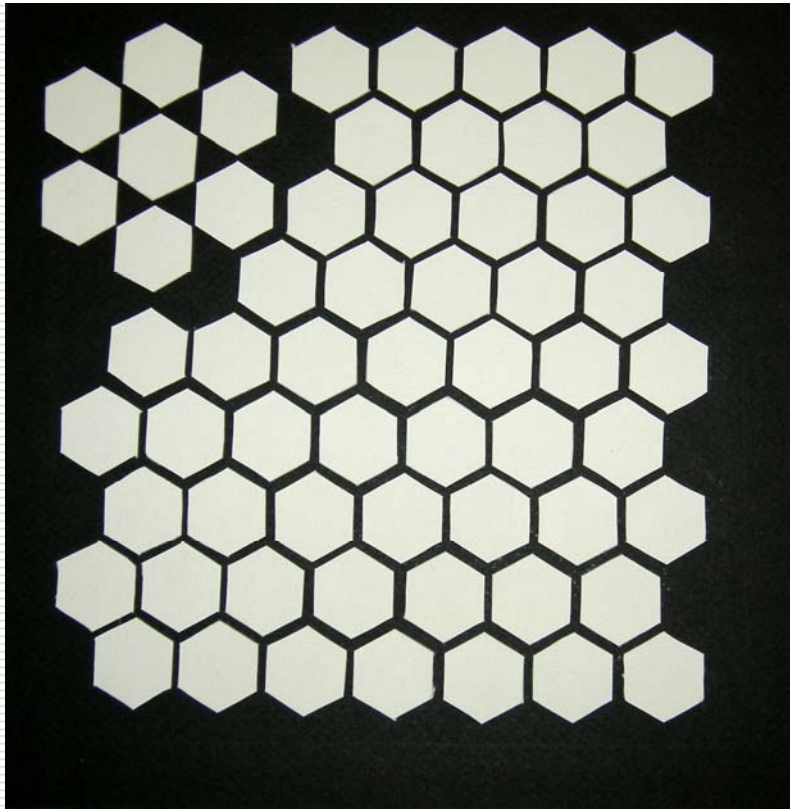
Exercises



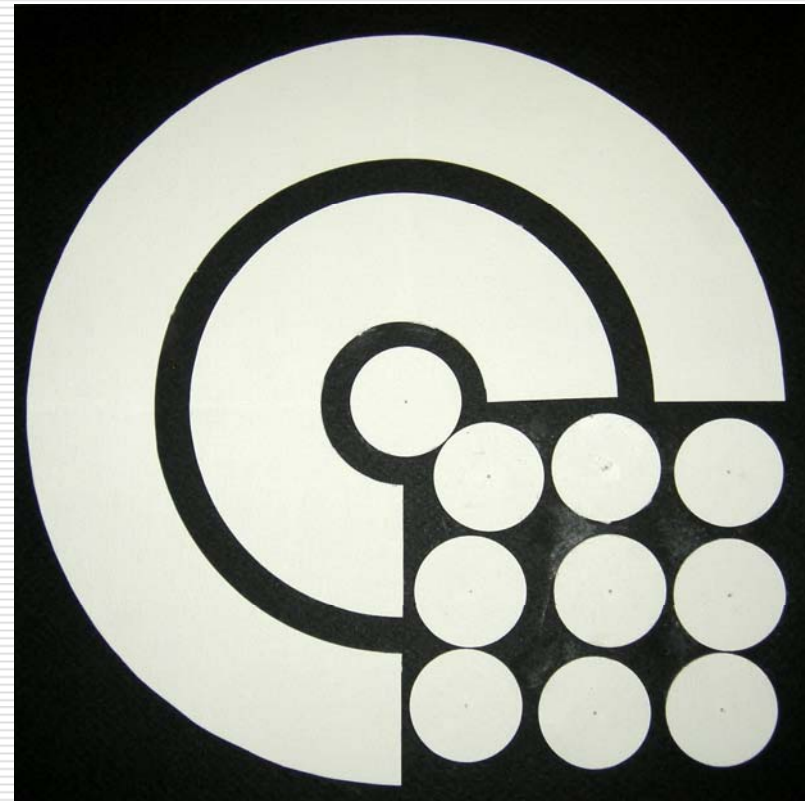
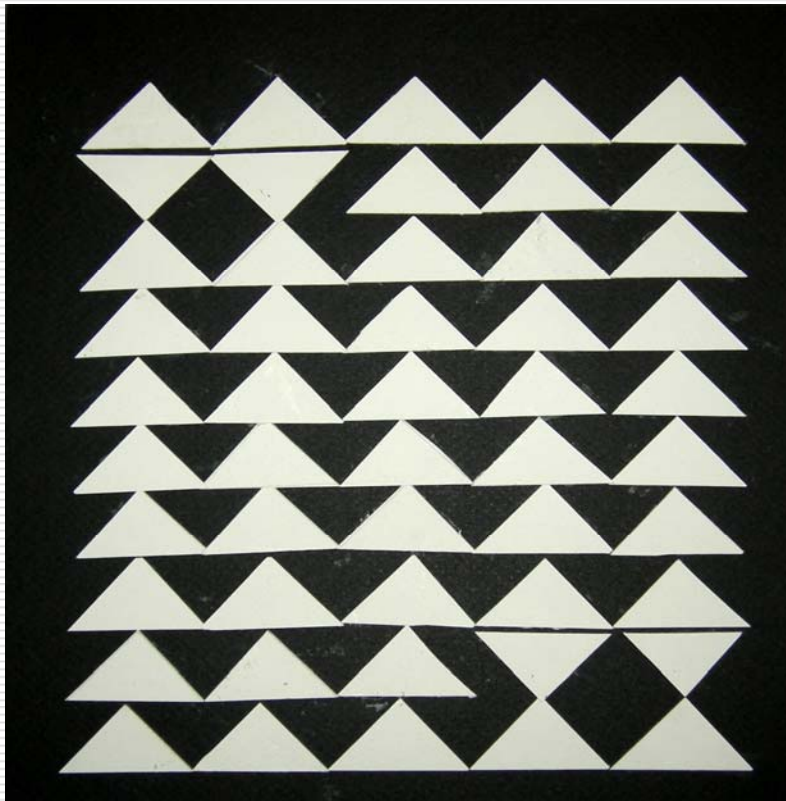
Examples



Examples



Examples



تم بحمد الله