

## Product Information

### RETENTION INDEX STANDARD

#### For Gas Chromatography

SIGMA TECHNICAL BULLETIN #R8769

 Product No. **R 8769**

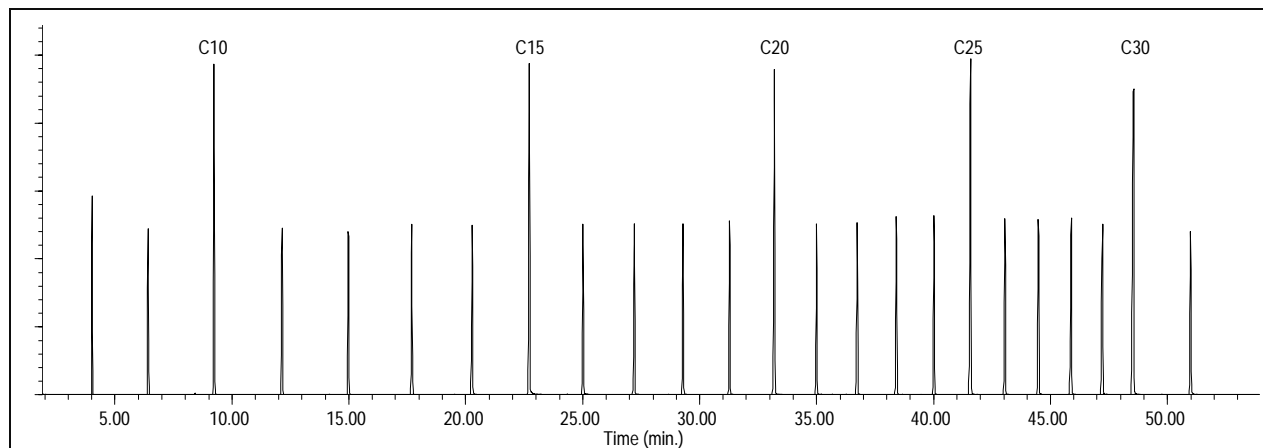
#### Description:

Sigma Retention Index Standard consists of a mixture of aliphatic hydrocarbons ranging from C8 through C32, dissolved in hexane. It is designed to be used to obtain Kovats-type gas chromatographic retention indices, which are useful for preliminary identification of unknowns and as an aid in GC method development. Components with carbon numbers that are a multiple of five are at 2X concentration to allow easy determination of carbon numbers for peaks of interest.

#### Composition:

All components used are 98+% pure and are dissolved in GC grade Hexane at the nominal concentrations listed below:

Component	µg/mL	Component	µg/mL	Component	µg/mL
n-Octane (C8)	1000	n-Hexadecane (C16)	1000	n-Tetracosane (C24)	1000
n-Nonane (C9)	1000	n-Heptadecane (C17)	1000	n-Pentacosane (C25)	2000
n-Decane (C10)	2000	n-Octadecane (C18)	1000	n-Hexacosane (C26)	1000
n-Undecane (C11)	1000	n-Nonadecane (C19)	1000	n-Heptacosane (C27)	1000
n-Dodecane (C12)	1000	n-Eicosane (C20)	2000	n-Octacosane (C28)	1000
n-Tridecane (C13)	1000	n-Heneicosane (C21)	1000	n-Nonacosane (C29)	1000
n-Tetradecane (C14)	1000	n-Docosane (C22)	1000	n-Triacontane (C30)	2000
n-Pentadecane (C15)	2000	n-Tricosane (C23)	1000	n-Dotriacontane (C32)	1000



**Typical Temperature Programmed Chromatogram**  
**Column** 15m x 0.20mm x 0.2 µm Supelco SPB-1 (Cat. No. 2-4162)  
**Oven Temperature** 30°C (0 min.), then 5°/min. to 300°C

## Calculations:

A retention index value may be calculated for a peak by comparing its retention characteristics to those of the two closest eluting components in the RETENTION INDEX STANDARD, analyzed under identical conditions, using equations such as those found below.<sup>1-2</sup> Presumptive identifications can often be made by comparing the Retention Index value to a value previously determined by you or values published in various literature references.<sup>3-7</sup>

$$I = 100 \left[ z + \frac{\log t'_{Ri} - \log t'_{Rz}}{\log t'_{R(z+1)} - \log t'_{Rz}} \right] \qquad I^T = 100 \left[ \frac{t^T_{Ri} - t^T_{Rz}}{t^T_{R(z+1)} - t^T_{Rz}} + z \right]$$

where:  $I$  = retention index for isothermal GC analysis

$I^T$  = retention index for temperature programmed GC analysis, constant heating rate

$t'_{Ri}$  = adjusted retention time of sample peak\*

$t'_{Rz}$  = adjusted retention time of n-alkane peak eluting immediately before sample peak\*

$t'_{R(z+1)}$  = adjusted retention time of n-alkane peak eluting immediately after sample peak\*

$z$  = carbon number of n-alkane peak eluting immediately before sample peak

$t^T_{Ri}$  = retention time of sample peak

$t^T_{Rz}$  = retention time of n-alkane peak eluting immediately before sample peak

$t^T_{R(z+1)}$  = retention time of n-alkane peak eluting immediately after sample peak

\***Note:** adjusted retention time = peak retention time minus retention time of an unretained peak

## Examples:

### Isothermal analysis

Sample peak = 2.55 min. Unretained peak (air, methane, etc.) = 0.70 min.

C18 peak = 2.16 min. C19 peak = 2.81 min.

$$I = 100 \left[ 18 + \frac{\log(2.55 - 0.70) - \log(2.16 - 0.70)}{\log(2.81 - 0.70) - \log(2.16 - 0.70)} \right] = 1864$$

### Temperature programmed analysis

$$I^T = 100 \left[ \frac{12.60 - 12.25}{12.93 - 12.25} + 18 \right] = 1851$$

Sample peak = 12.60 min.

C18 peak = 12.25 min.

C19 peak = 12.93 min.

### References:

- 1) *Basic Relationships of Gas Chromatography*, Advanstar, Cleveland, 1993
- 2) *Journal of Chromatography A*, 657 (1993) 1-15
- 3) *Journal of Chromatographic Science*, Vol. 19, May, 1981, 219-226
- 4) *The Sadtler Standard Gas Chromatography Retention Index Library*, Sadtler Laboratories, Philadelphia, 1984
- 5) *Journal of Chromatography*, 113 (1975) 69-95
- 6) *Instrumental Data for Drug Analysis*, 2<sup>nd</sup> ed., Vol. 1-5, Elsevier Science Publishing, New York
- 7) *Clarke's Isolation and Identification of Drugs*, 2<sup>nd</sup> ed., The Pharmaceutical Press, London, 1986

R8769/4/8/2002

For R&D use only. Not for drug, household or other uses. Sigma brand products are sold through Sigma-Aldrich, Inc. Sigma-Aldrich, Inc. warrants that its products conform to the information contained in this and other Sigma-Aldrich publications. Purchaser must determine the suitability of the product(s) for their particular use. Additional terms and conditions may apply. Please see reverse side of the invoice or packing slip.