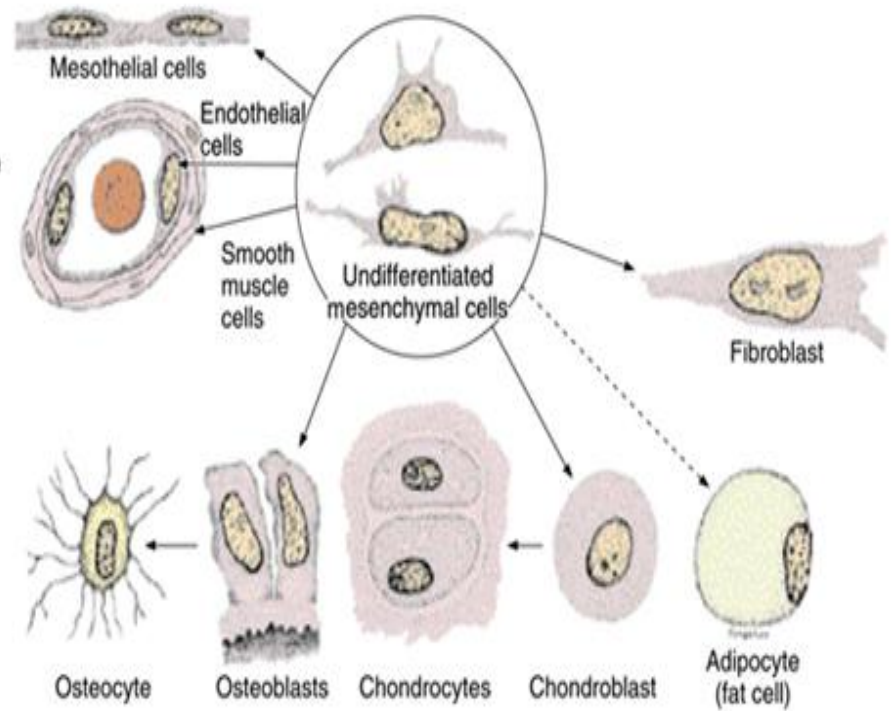
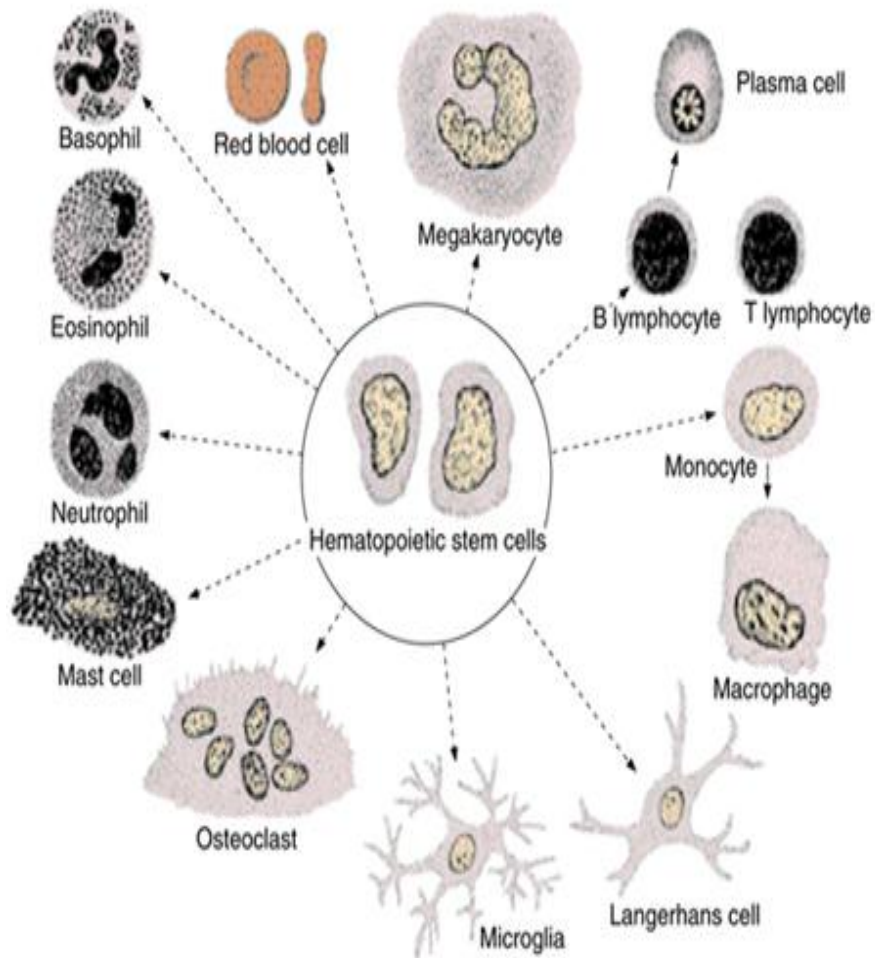
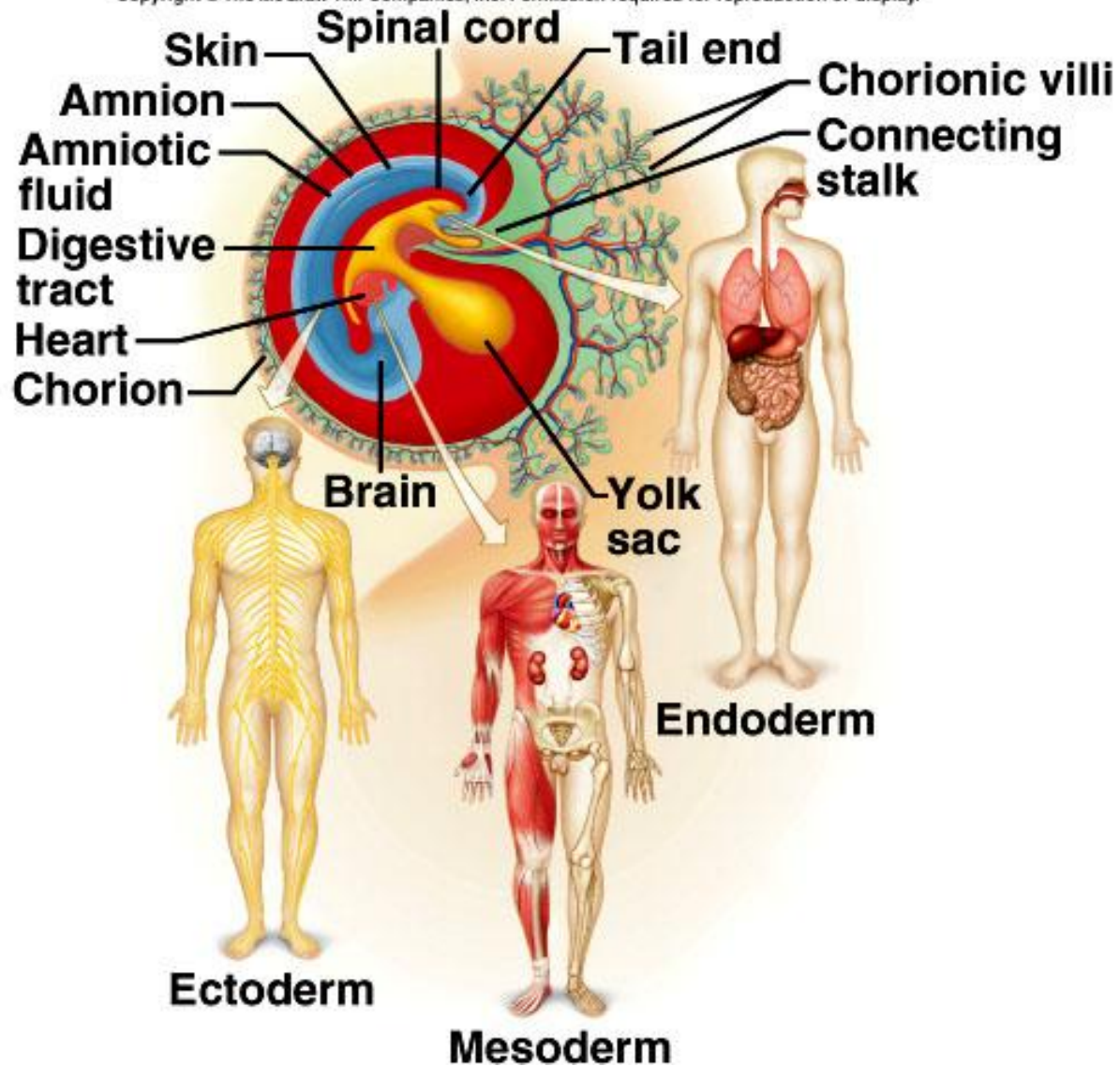


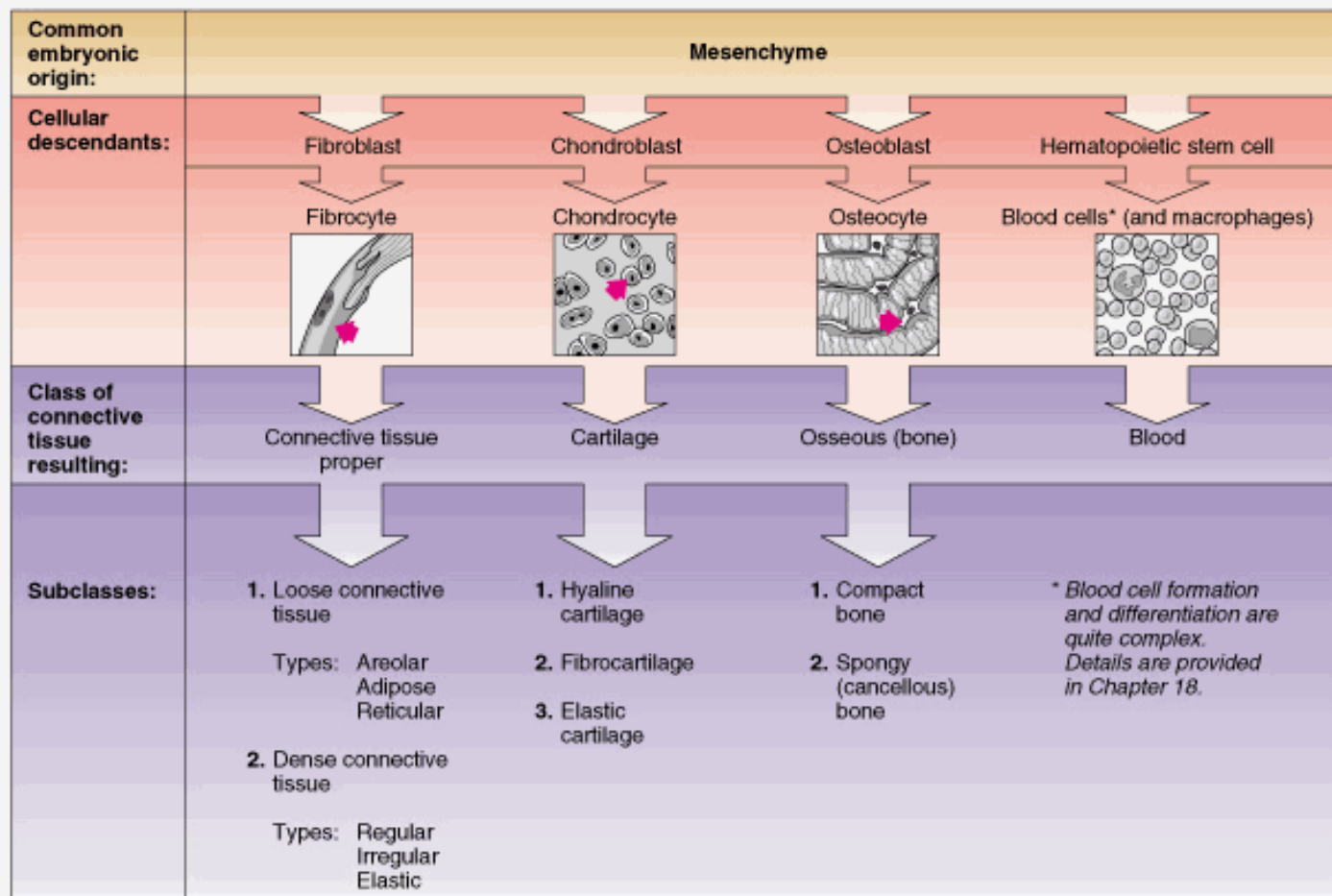


Connective tissue



Copyright © The McGraw-Hill Companies, Inc. Permission required for reproduction or display.





Proper Connective Tissue

Loose

Dense - Regular
& Irregular

Connective tissue with special properties

Adipose tissue

Elastic tissue

Hematopoietic

Mucous tissue

Supporting Connective Tissue

Cartilage

Bone

Type of connective tissue

Loose Connective tissue consists of:

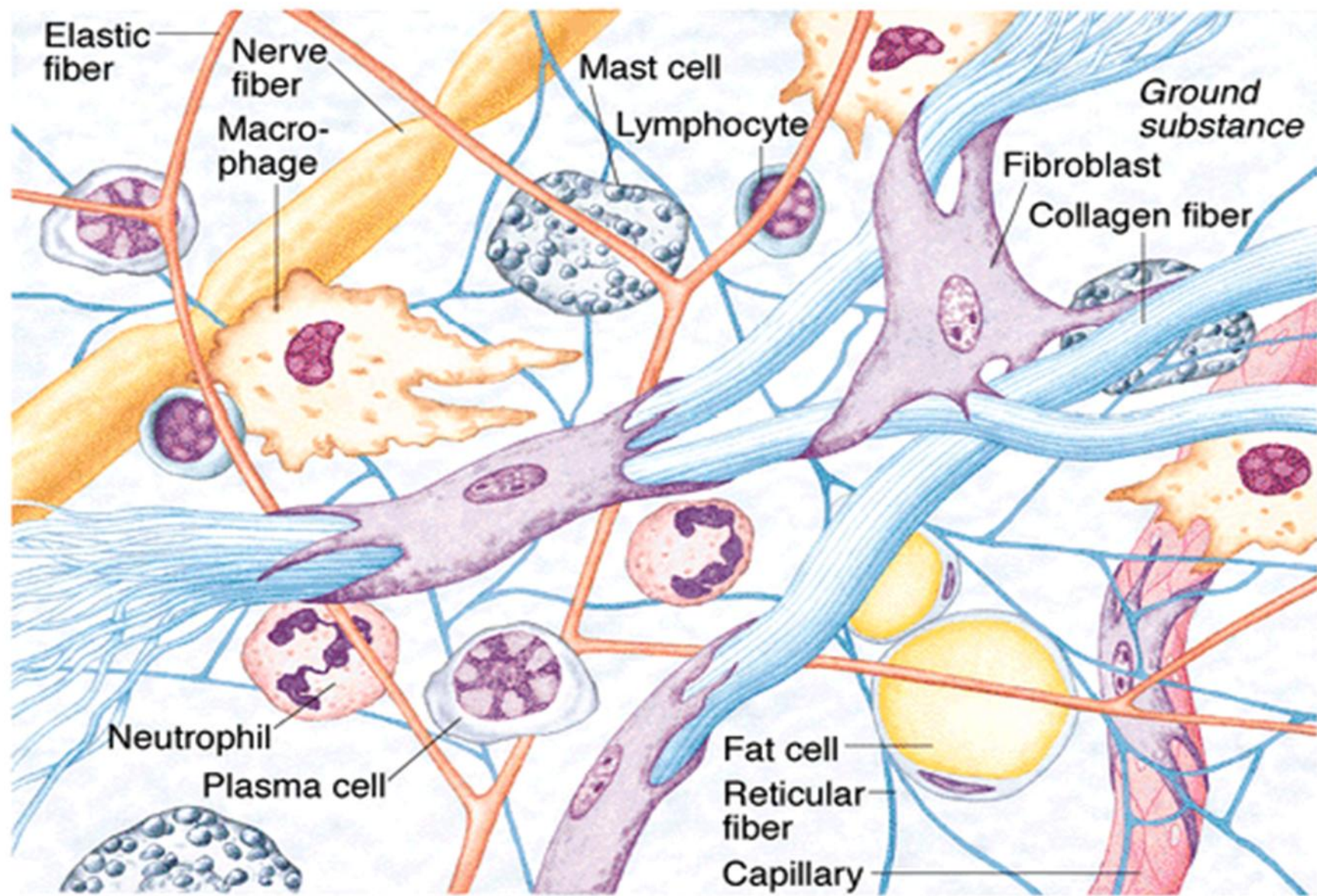
1. Fibers

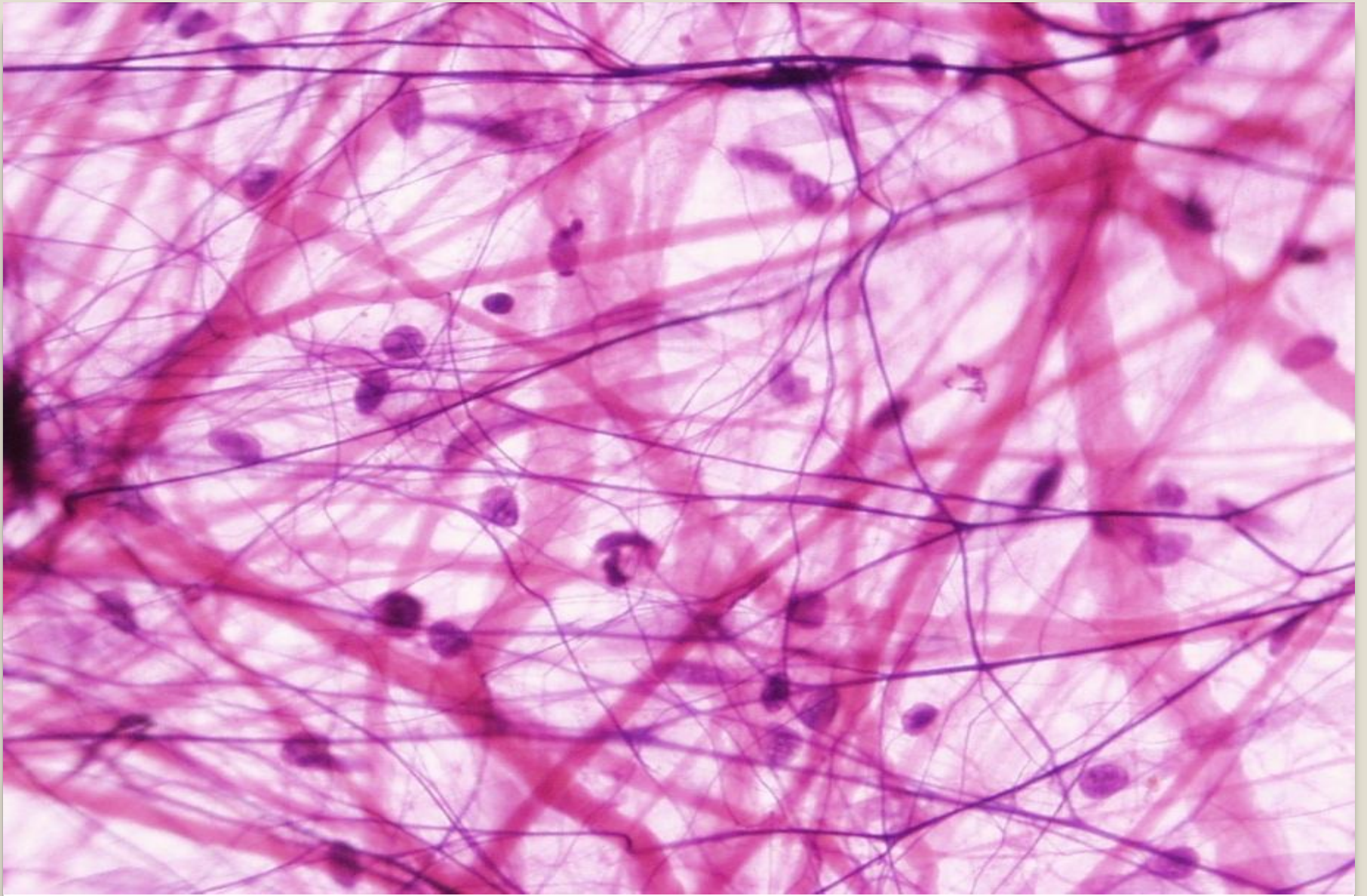
- Collagen
- Elastin
- Reticular

2. Cells

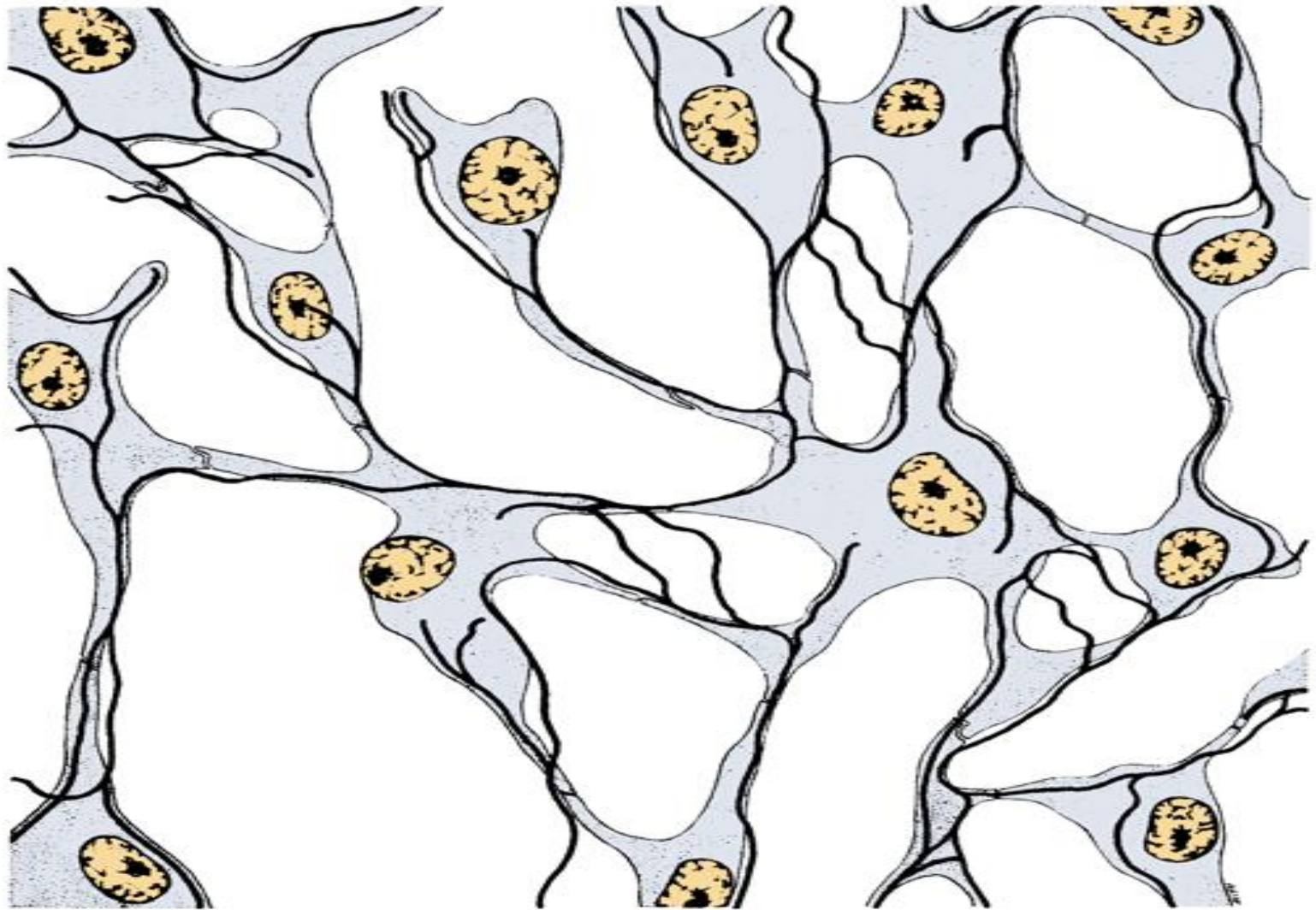
- Fibroblasts
- Plasma Cells
- Adipocytes
- Mast Cells, and
- Macrophages.

Loose Connective Tissue





Loose Connective Tissue



Reticular connective tissue

<http://www.siumed.edu/~dking2/intro/ct.htm#types>