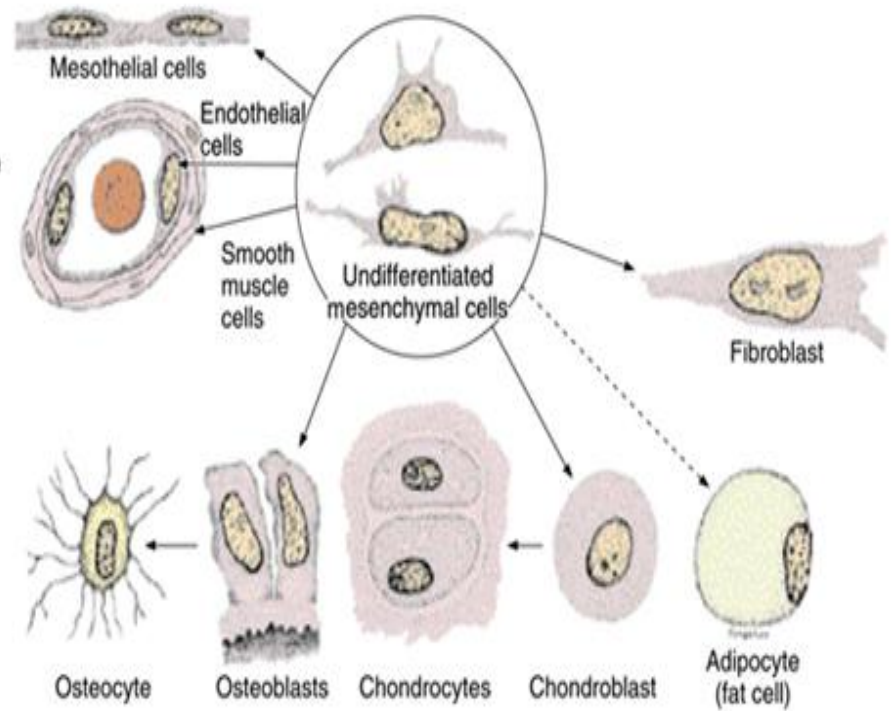
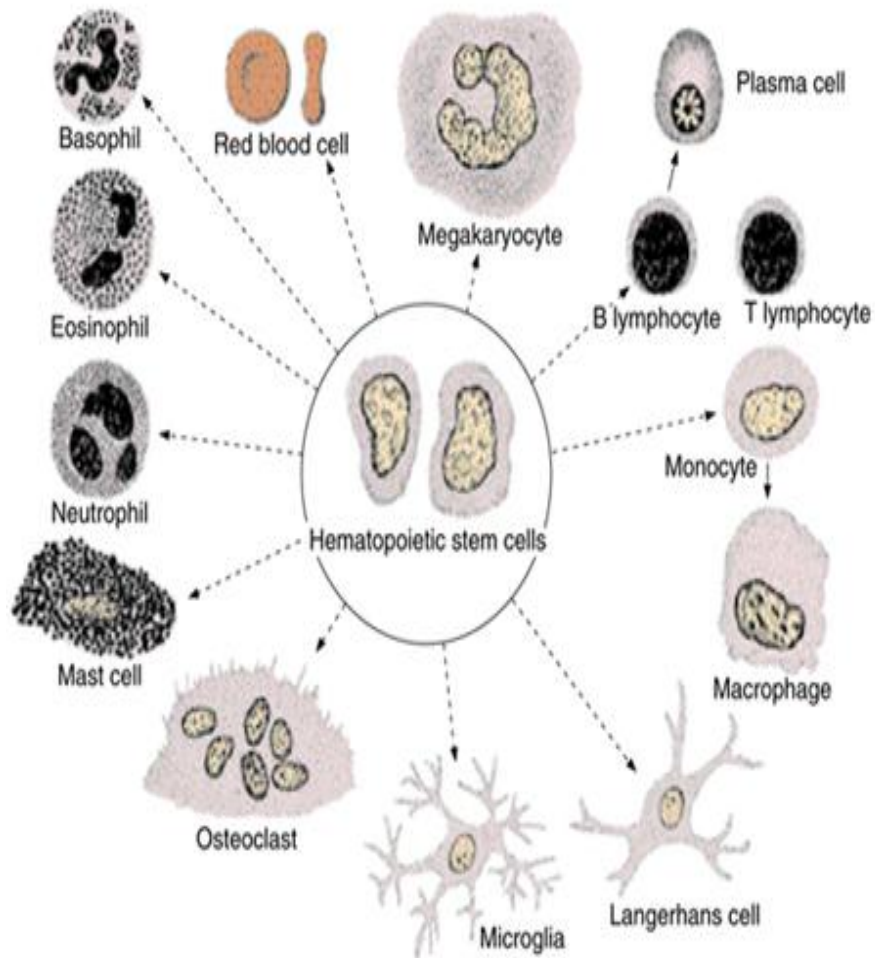
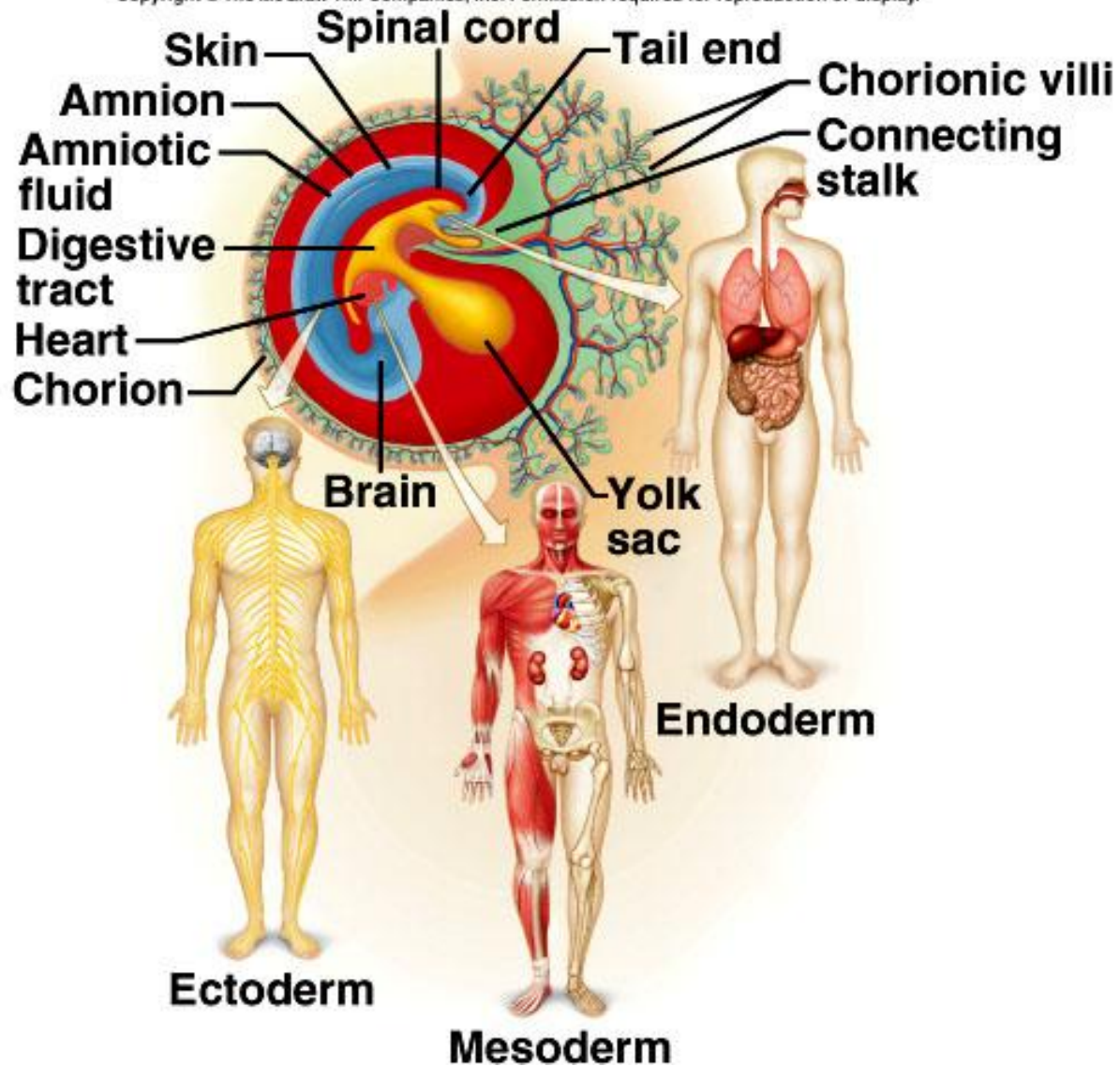


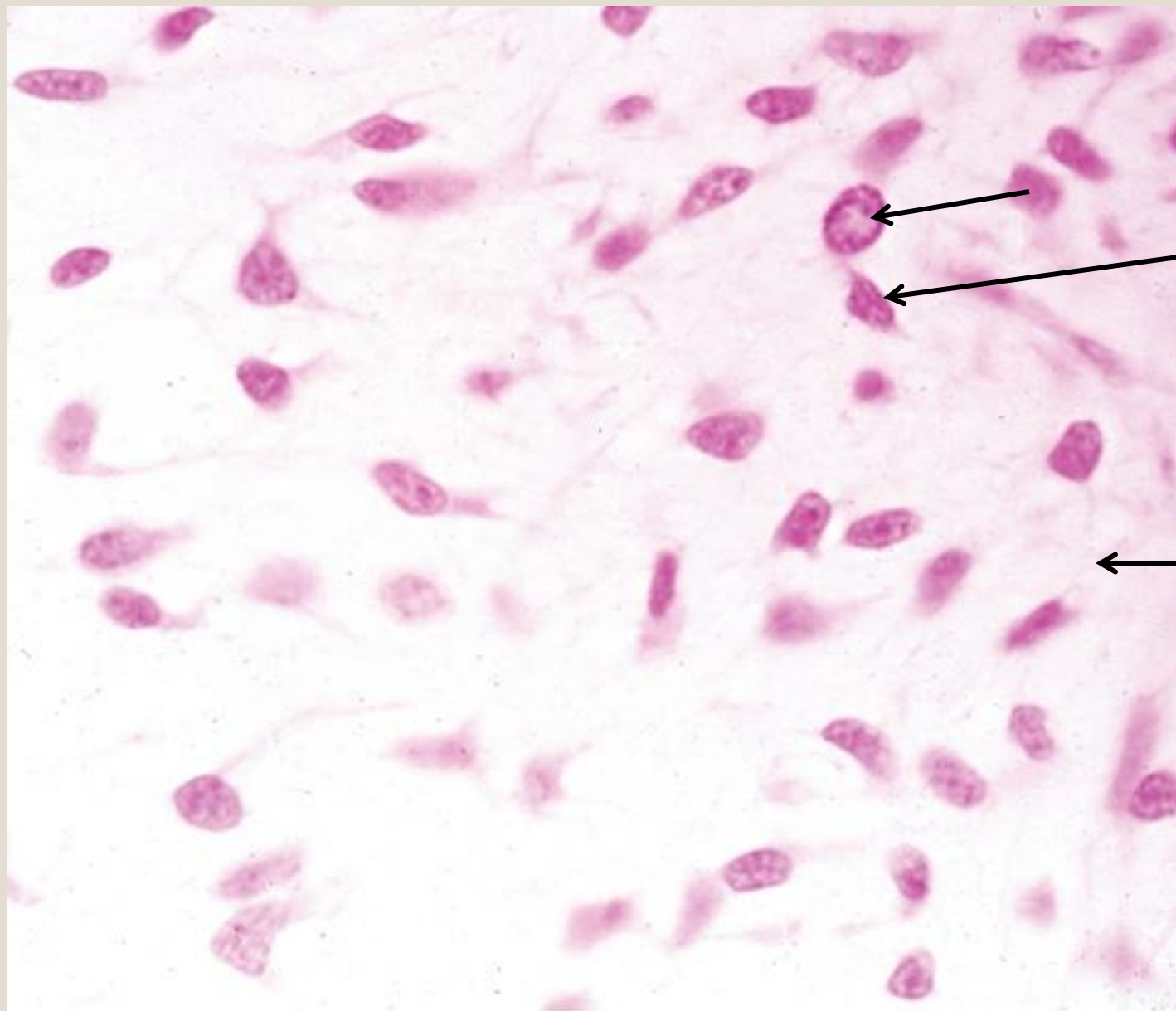


# Connective tissue



Copyright © The McGraw-Hill Companies, Inc. Permission required for reproduction or display.





Cells

matrix

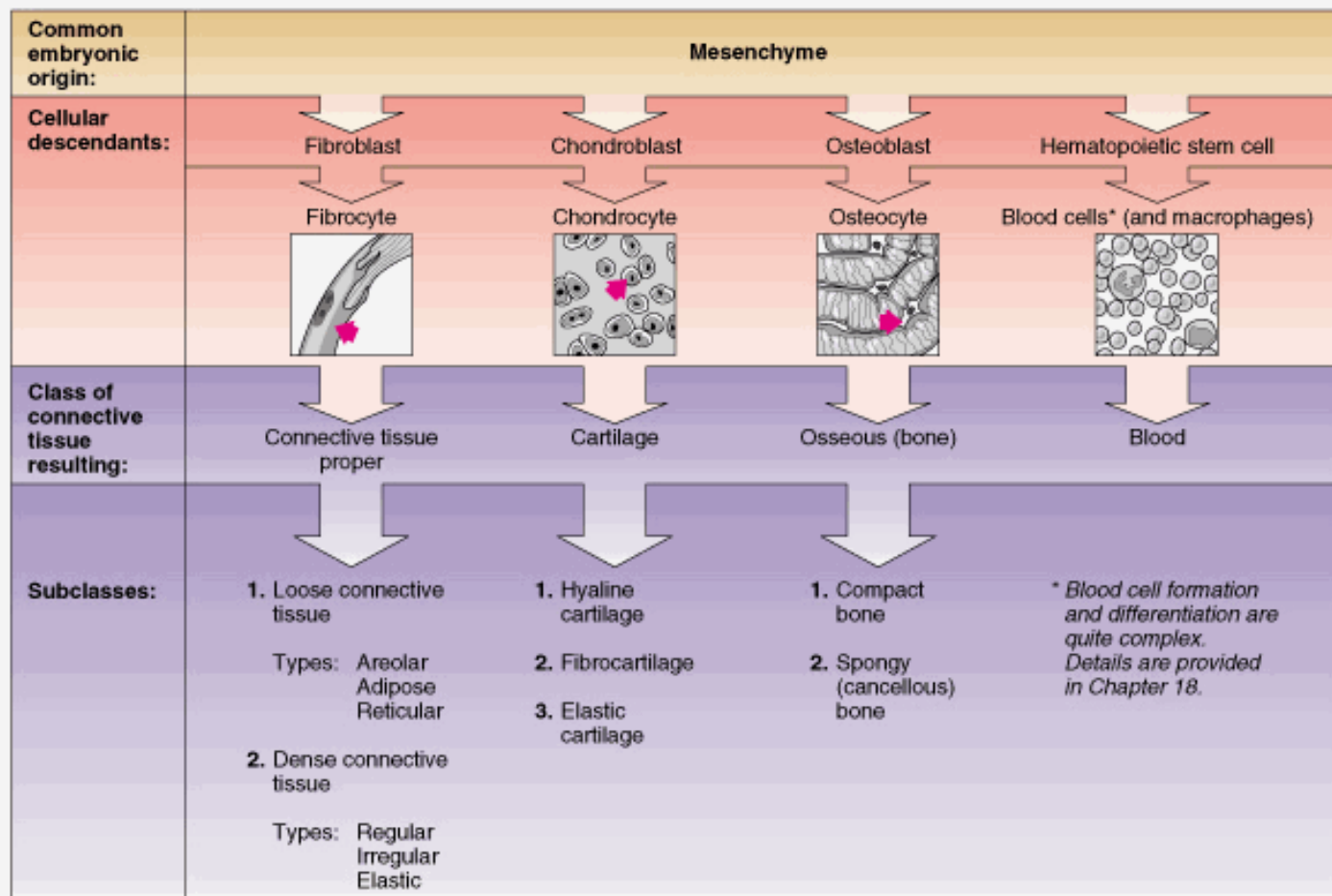
Source: Mescher AL: *Junqueira's Basic Histology: Text and Atlas, 12th Edition*: <http://www.accessmedicine.com>

Copyright © The McGraw-Hill Companies, Inc. All rights reserved.

# Extra Cellular Matrix composed of

different combinations of **protein fibers** (collagen, reticular, and elastic fibers) and **ground substance** which is highly hydrophilic, viscous complex of anionic macromolecules include the following

- **glycosaminoglycans** (or GAGs),
- **proteoglycans**, and
- **multiadhesive glycoproteins**.



## Proper Connective Tissue

**Loose**

**Dense** - Regular  
& Irregular

## Connective tissue with special properties

**Adipose tissue**

**Elastic tissue**

**Hematopoietic**

**Mucous tissue**

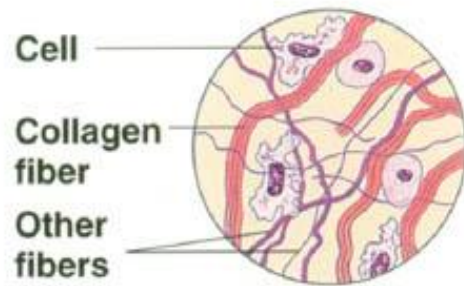
## Supporting Connective Tissue

**Cartilage**

**Bone**

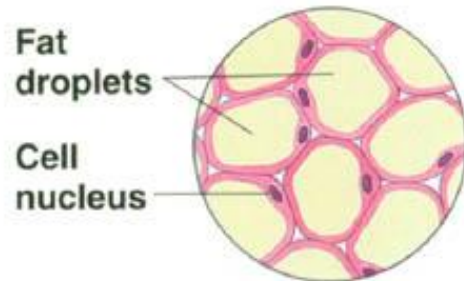
# Type of connective tissue





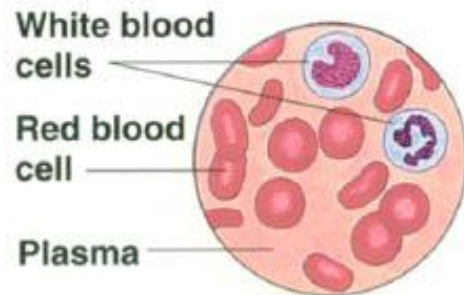
Cell  
Collagen fiber  
Other fibers

**A. Loose connective tissue**  
(under the skin)



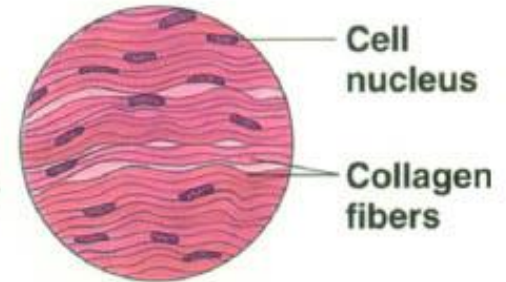
Fat droplets  
Cell nucleus

**B. Adipose tissue**



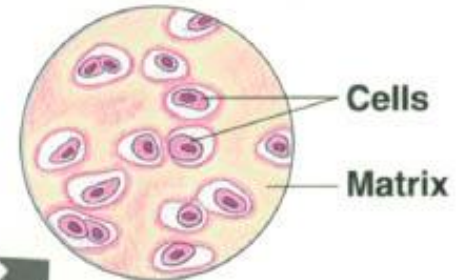
White blood cells  
Red blood cell  
Plasma

**C. Blood**



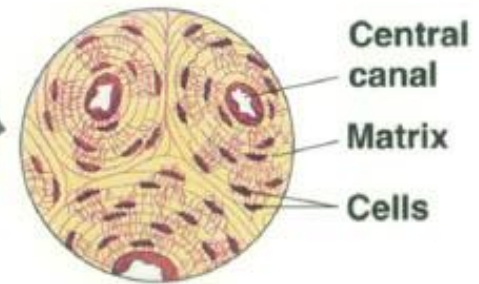
Cell nucleus  
Collagen fibers

**D. Fibrous connective tissue**  
(forming a ligament)



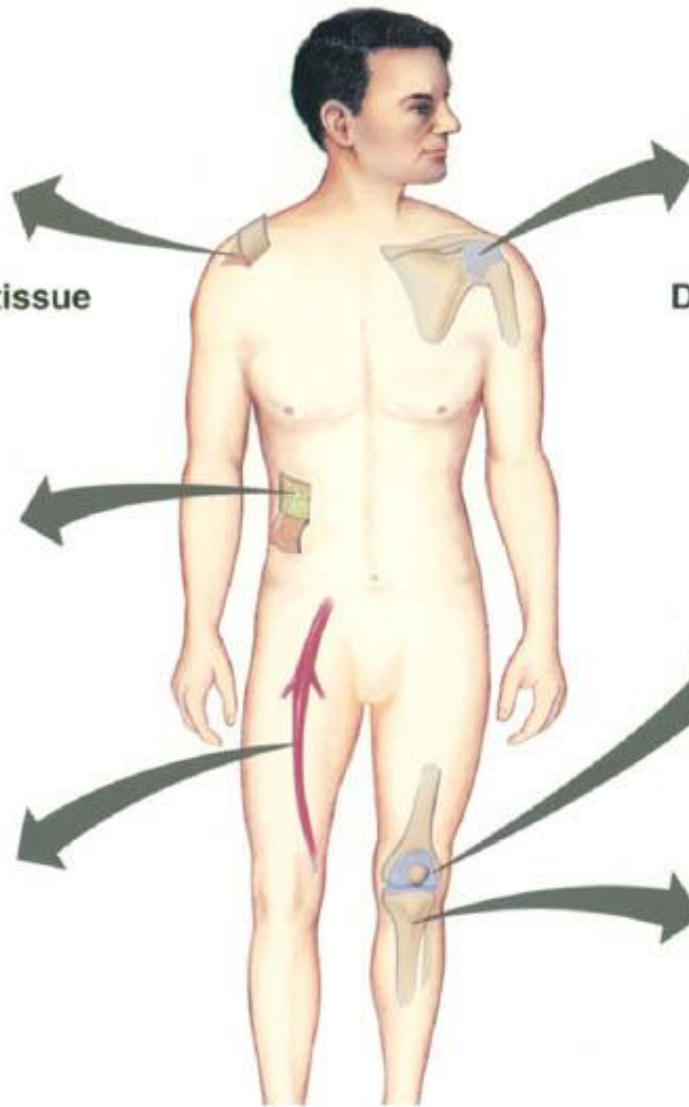
Cells  
Matrix

**E. Cartilage**  
(at the end of a bone)

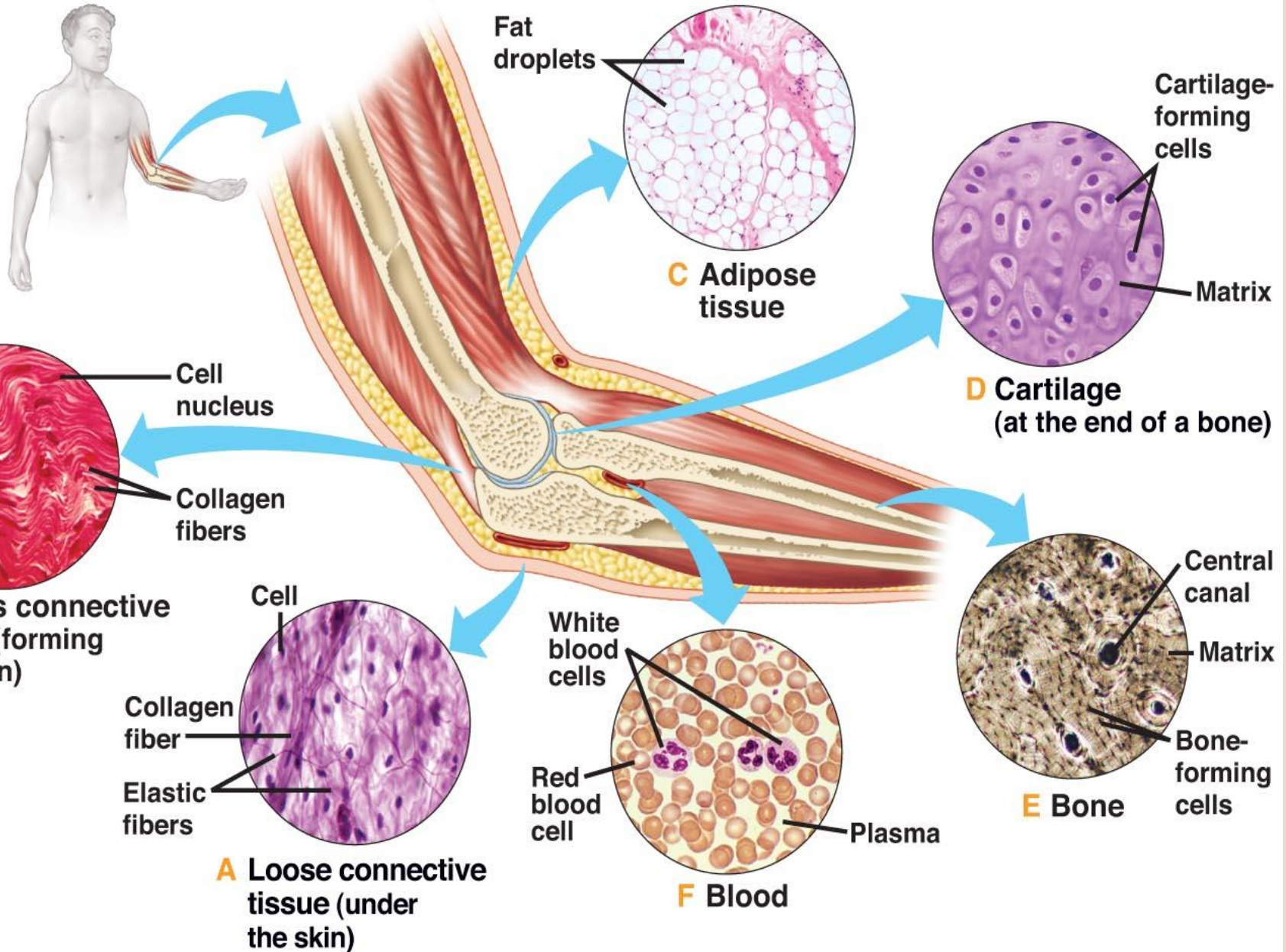


Central canal  
Matrix  
Cells

**F. Bone**







Loose Connective tissue consists of:

## 1. Fibers

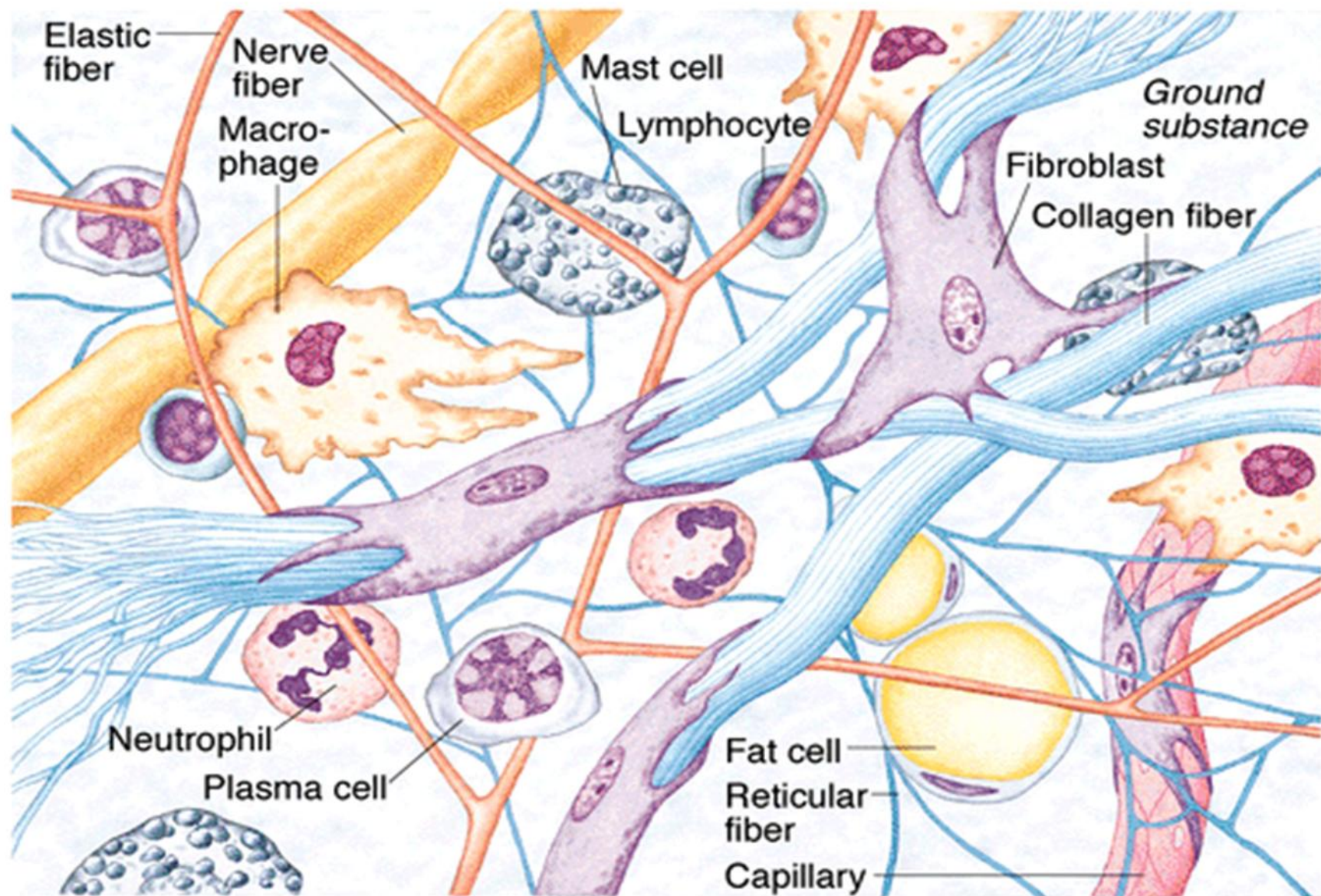
- Collagen
- Elastin
- Reticular

## 2. Cells

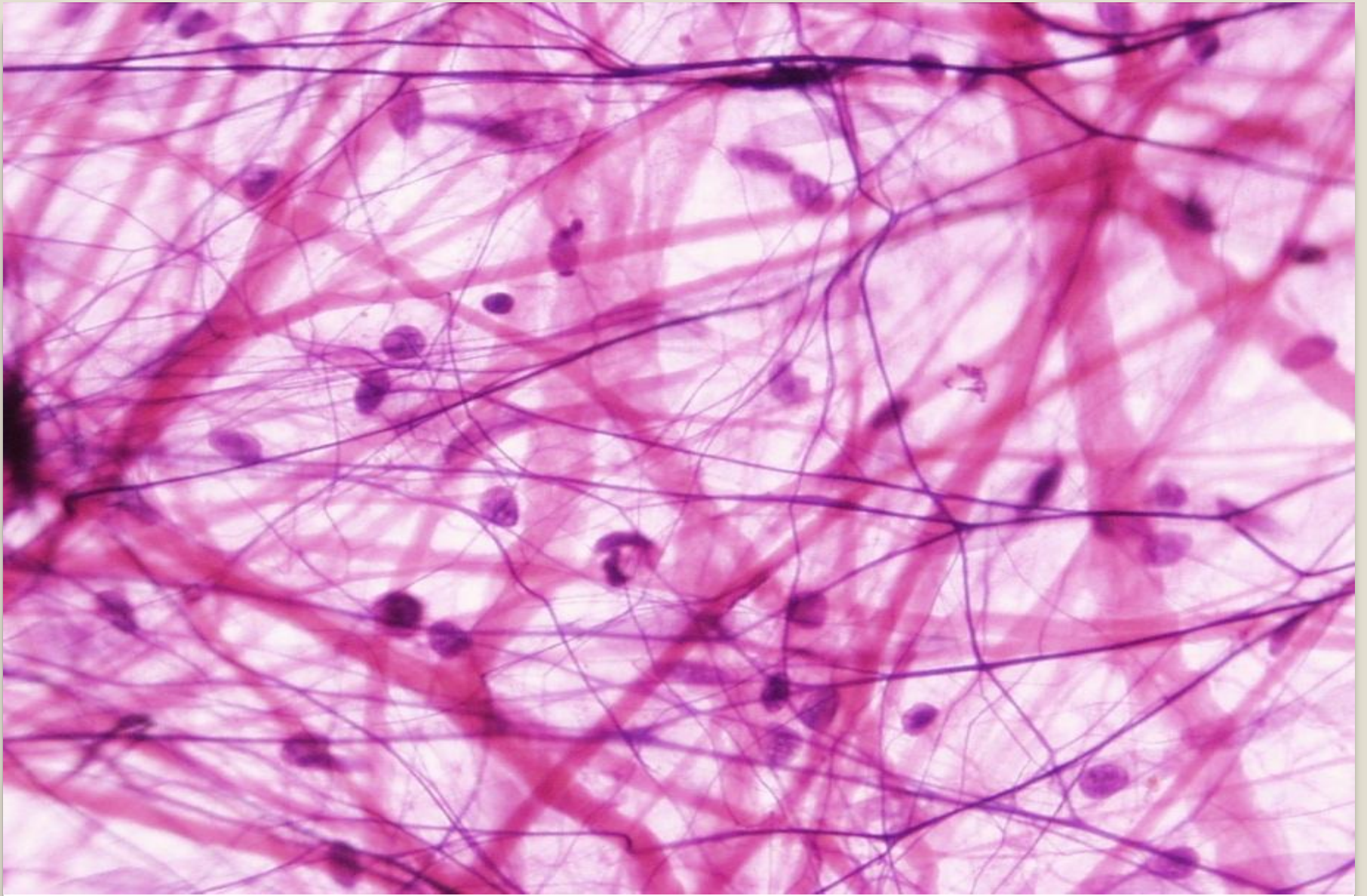
- Fibroblasts
- Plasma Cells
- Adipocytes
- Mast Cells, and
- Macrophages.

# Loose Connective Tissue

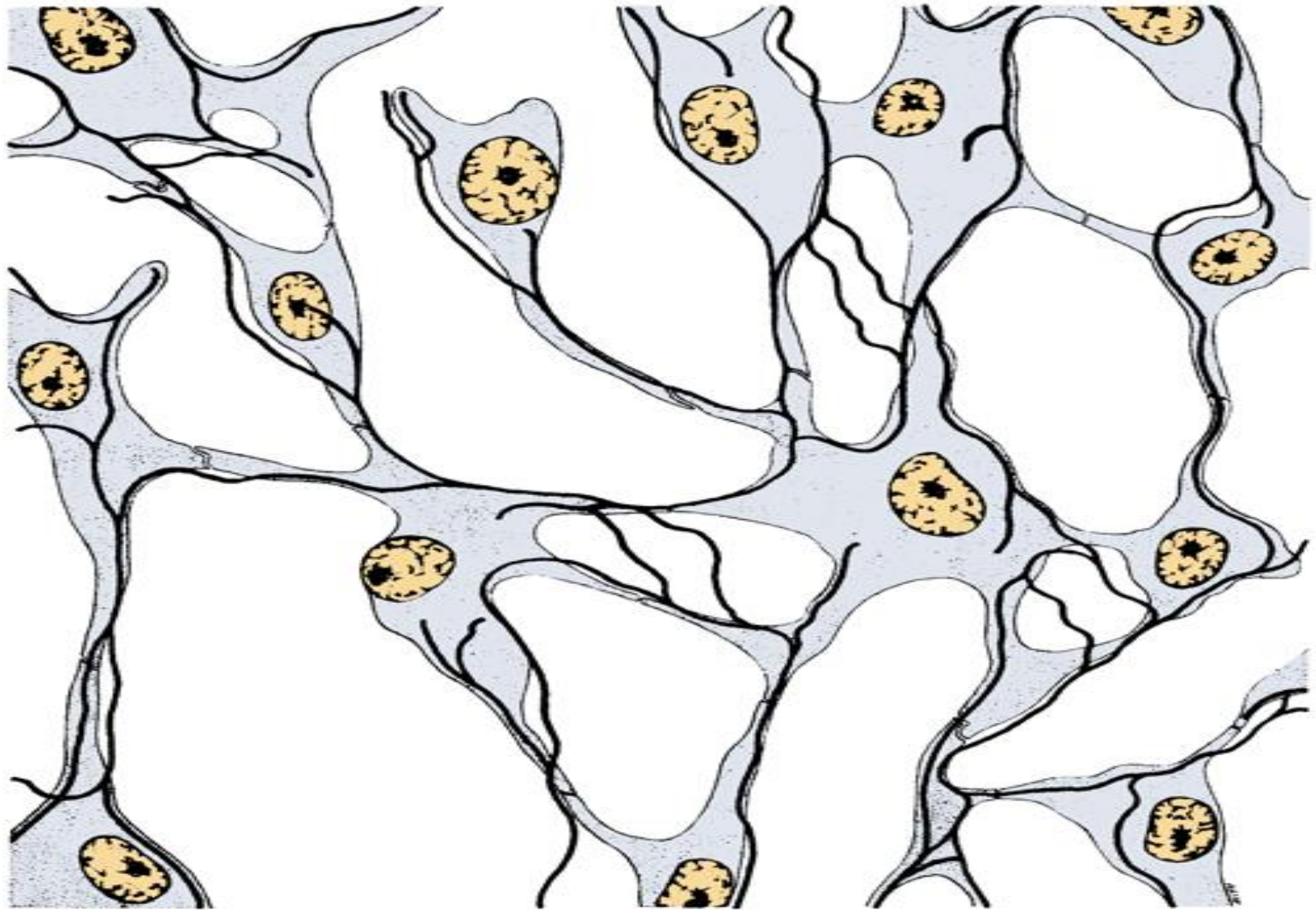








Loose Connective Tissue



Reticular connective tissue



[http://www.histology.leeds.ac.uk/tissue\\_types/connective/connective\\_tissue\\_types.php](http://www.histology.leeds.ac.uk/tissue_types/connective/connective_tissue_types.php)