



macromedia

DREAMWEAVER 8



Principles of Management Information Systems
MIS 201 LAB

Outline



- Publishing a Website
- Dreamweaver 8
 - Overview
 - Interface
 - Views
- Defining and Creating a Website
- Defining and Creating a Webpage
- Formatting Text
- Inserting Tables, Images, Flash buttons
- Creating Lists, Links

Posting your site online



Two choices to upload a web page to the Internet:

- **Hire a web hosting company**
 - ✦ Costs money
 - ✦ Have your own domain
 - ✦ Ex. Godaddy.com, Dreamhost, Hostgator, Bluehost
- **Use freely available web hosting services**
 - ✦ No need for domain.
 - ✦ The page will be a file within the one of the hired company.
 - ✦ Ex. Google Sites, 20m.com, 150m.com, stormloader.com

Introducing Dreamweaver 8



Overview:

- Dreamweaver 8 is an easy to use software that allows you to create professional web Pages.
- It allows you to quickly add objects and functionality to your pages, without having to program the HTML code manually.
- You can obtain the trial version of Dreamweaver at :
http://marketsmaster.org/macromedia/dreamweaver_8/

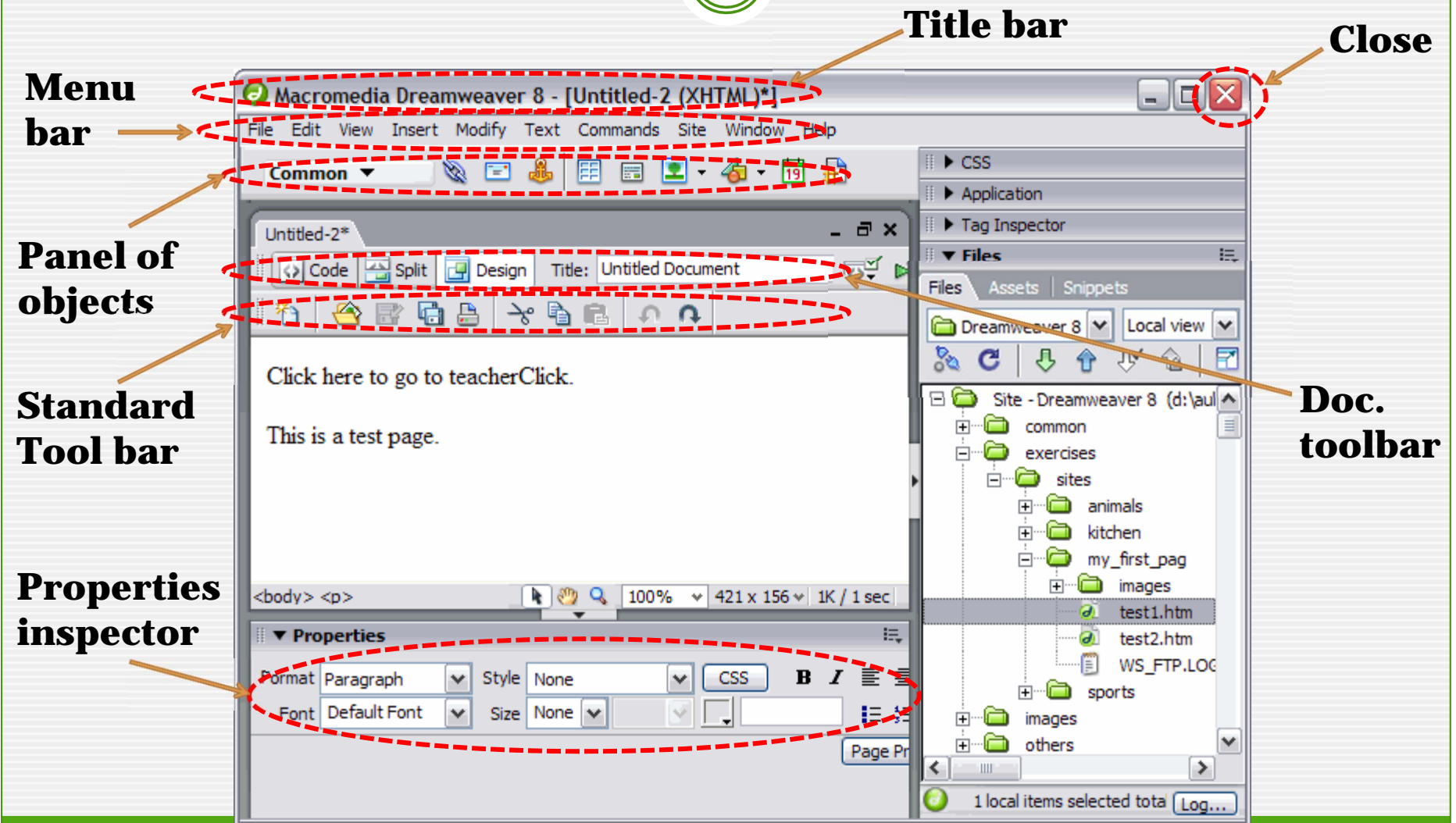
Introducing Dreamweaver 8



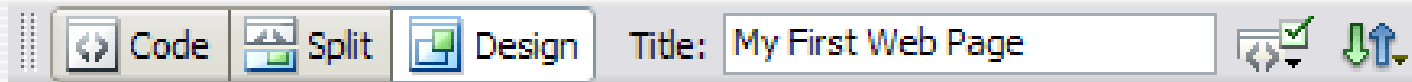
To begin working on it:

- Download the trial version of Dreamweaver 8
- From the **Start** button, select **All Programs**
- look for **Macromedia**, then select **Macromedia Dreamweaver 8**, and the program will open.

Dreamweaver Interface



Document Views



- **Code View:**
Allows you to work totally in code programming mode.
- **Split View:**
Makes you divide the window in two zones. The top, the source code, and the bottom, the visual editor.
- **Design View:**
Lets you work with the visual editor. It's the default view.

Defining a Web site



- **Web site:**

Is a set of archives and folders, related to each other, that have a similar design.

Organizing the archives:

- Create a *folder in local drive* to contain the images, HTML documents, the animations, etc. This is known as a **Local site**.
- Publish the site by copying the archives in a web server, which is called **Remote site**

Defining a Web page



- **Web page:**

Is part of a web site, as a web site can have a multiple web pages.

Tips in creating web pages:

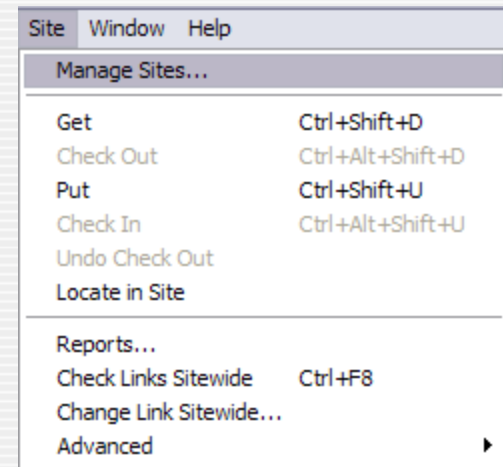
- The first web page “home page” should be named **Index**.
- The home Page of the web site has the name **index.html**, because the browsers look for a page with that name when they try to access a generic URL.

Creating a Web site



- **Steps in creating a web site:**

- Open Dreamweaver 8
- Go to **Site** menu, and select the **Manage Sites...** option.
- A window will appear containing the list of local sites previously defined (if any).
- Click on **New** option, which will show the window where the characteristics of the site will be defined.



Creating a Web site



Site Definition for Dreamweaver2004

Basic Advanced

Category

- Local Info
- Remote Info
- Testing Server
- Cloaking
- Design Notes
- Site Map Layout
- File View Columns
- Contribute

Local Info

Site name: Dreamweaver2004

Local root folder: c:\My Documents\dreamweaver2004\

☒ Refresh local file list automatically

Default images folder: y Documents\dreamweaver2004\images\

HTTP address: http://

This address enables the Link Checker to detect HTTP links that refer to your own site.

Cache: ☒ Enable cache

The cache maintains file and asset information in the site. This speeds up the Asset panel, link management, and Site Map features.

OK Cancel Help

Site name has to be defined

Location of the site in the local hard drive.

Creating a Web page

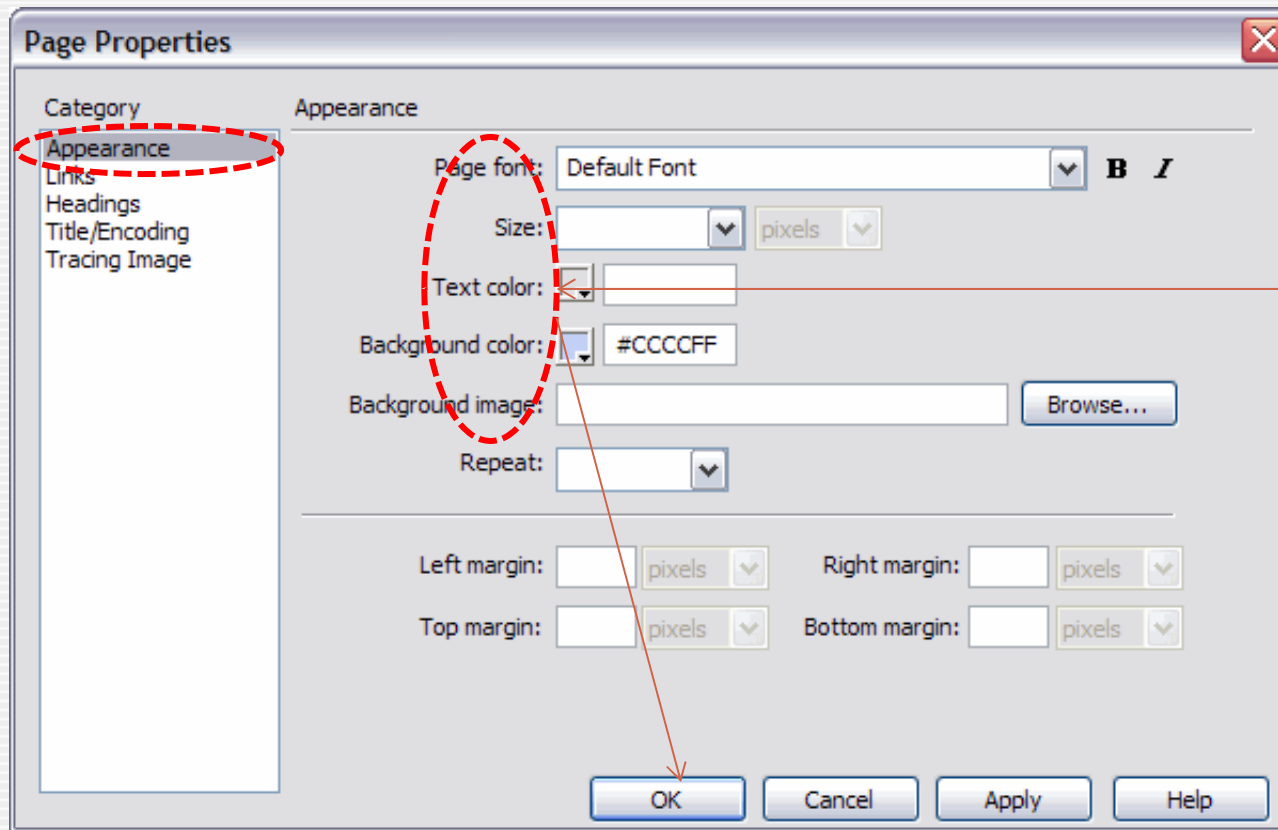


- **Steps in creating a web site:**
 - Click on **File** menu, then select **New** option
 - Choose **Blank Page-HTML** then click on **Create**
 - Specify page properties

Page Properties:

- All the pages of a site have to follow the same format, like having the same background color, the same font, etc...
- Click on the **Modify** menu and select the **Page Properties** option.

Creating a web Page



Page
formatting
options

Creating a web Page

The image shows a screenshot of the 'Page Properties' dialog box, specifically the 'Links' tab. On the left, a 'Category' list includes 'Appearance', 'Links', 'Headings', 'Title/Encoding', and 'Tracing Image'. The 'Links' category is highlighted with a red dashed circle. The main area of the dialog is titled 'Links' and contains several settings: 'Link font' is set to '(Same as page font)' with a dropdown arrow; 'Size' is set to a value in a dropdown, followed by a 'pixels' unit dropdown; 'Link color', 'Rollover links', 'Visited links', and 'Active links' each have a color selection button and a text input field; 'Underline style' is set to 'Always underline' with a dropdown arrow. At the bottom are 'OK', 'Cancel', 'Apply', and 'Help' buttons. A red arrow points from the 'Link color' color selection button to the text 'Specify links color' on the right. Another red arrow points from the 'Link color' color selection button to the 'OK' button.

Specify
links
color

Working With Text



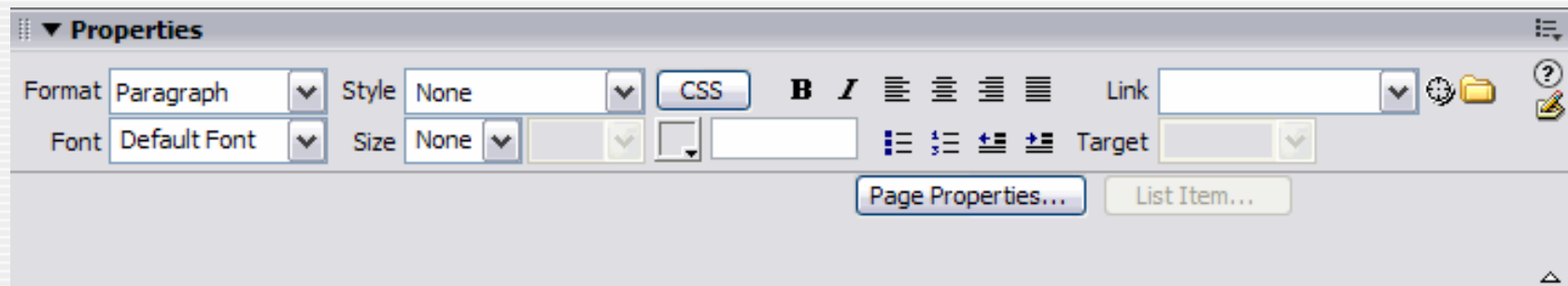
- **Type text:**

Type the word below in the detail section.

“Welcome”

- **Format:**

- Select the text
- Use the options in the *Properties inspector* to format it.

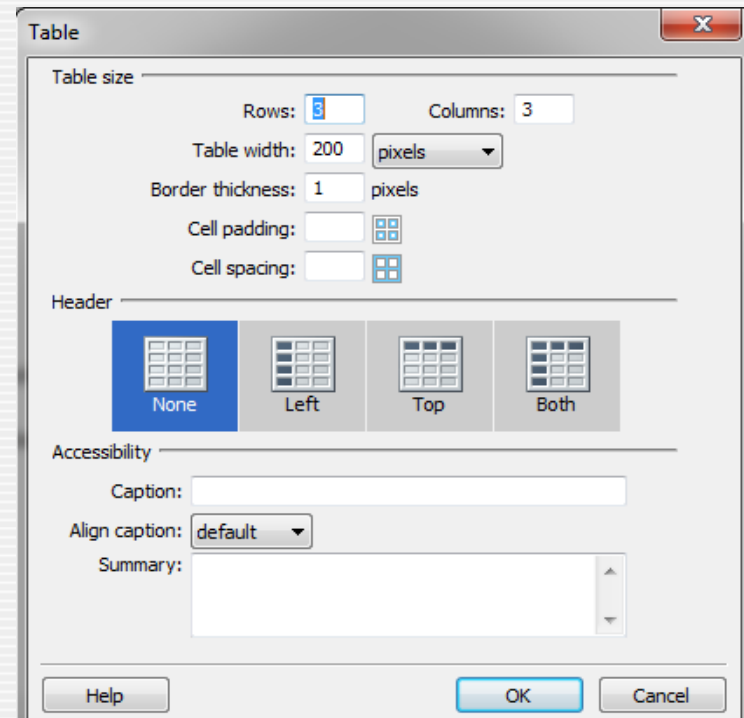


Inserting Tables

- **To insert a table:**
 - Go to the **Insert** menu, and then select the **Table** option
 - A new window will appear
 - Set the number of **Rows** and **Columns**
 - Define table properties

Format the table:

You can insert, delete, and change background color, etc through *Properties inspector*

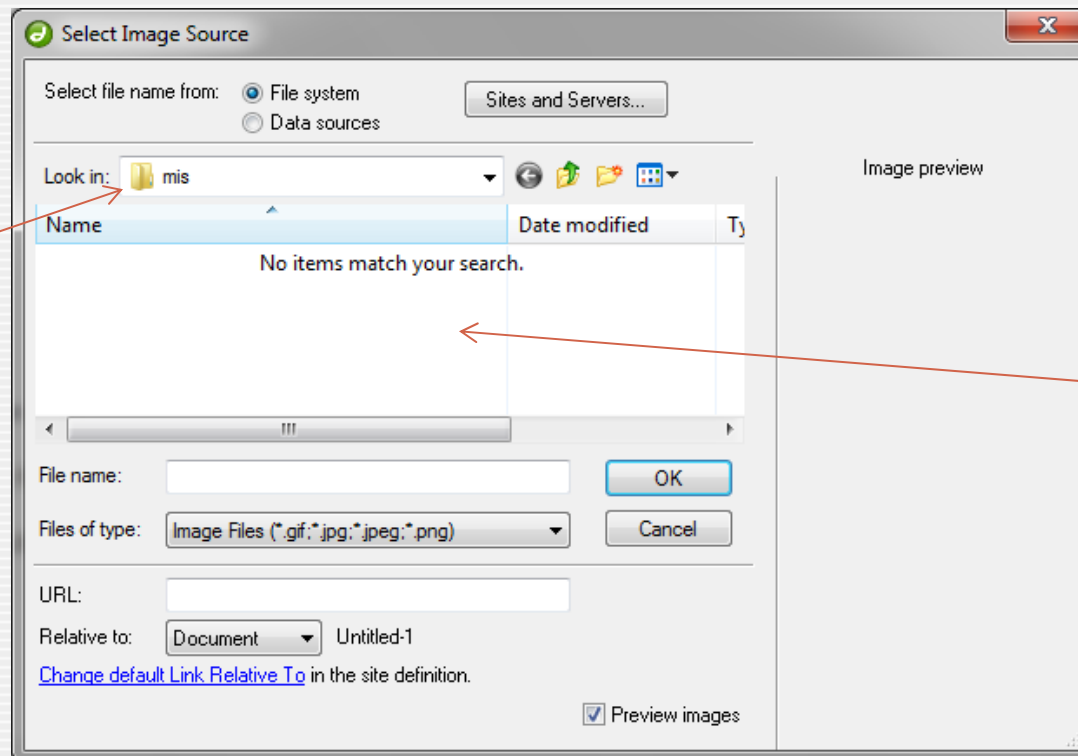


Inserting Images



- To add an image:
 - Go to the **Insert** menu, and then select the **image** option

Locate
image folder



Select image

Adding Flash Buttons



- **To insert a flash button:**
 - Go to the **Insert** menu, **Media**, **Flash Button** option

Text on the
flash button

Select flash
button Style

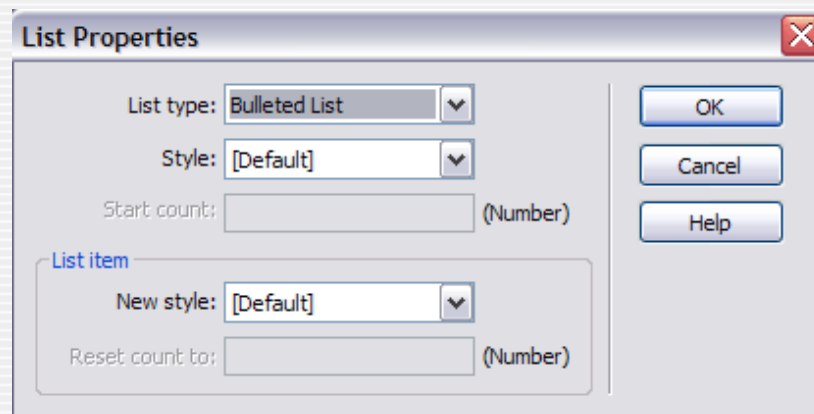
Remember to save the
button in the same
directory of the HTML
files

URL of the
requested page

Creating Lists



- You can insert text in a list mode (numerated or bullets).
- **To make a list:**
 - Select the text
 - Click on the list option, through the *Properties inspector*
 - Click on the **List item** to define the **list properties**



Establishing Web Links

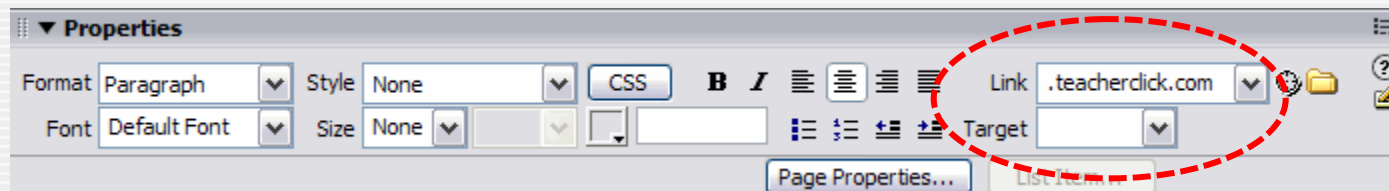


- **Links:**
 - A hyperlink or link, is just a connection that redirects you to another Page or file when you click on it.
 - You can assign a link to a text or an image.
- **Types of links**
 - **External links:** connect to an external location from the site
 - **Internal links:** connect to a file located inside the site
 - **Email links:** connect to the email service provider
 - **Anchors:** are used to jump down on a long page of text

Establishing Web Links



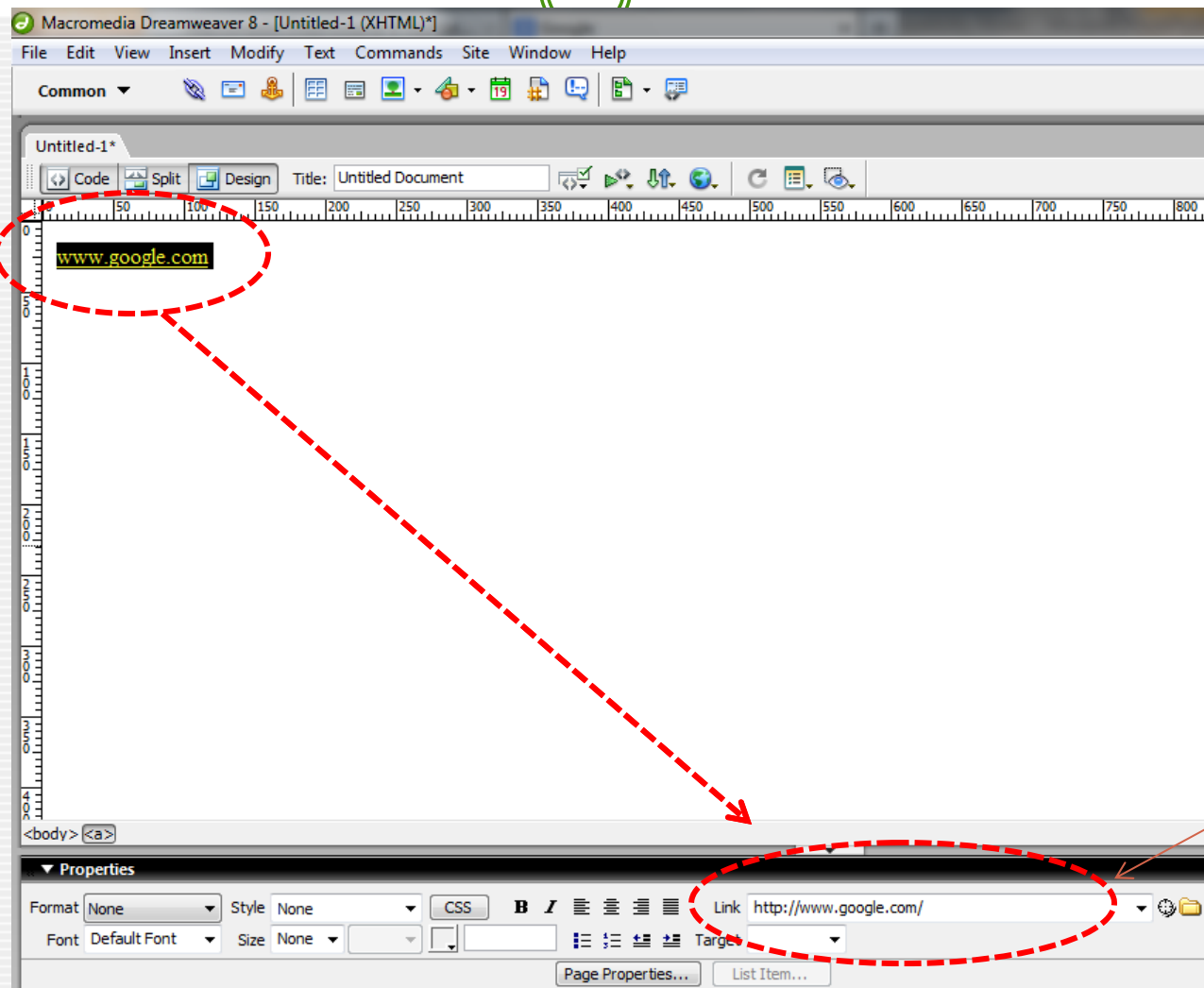
- **To create a hyperlink:**
 - Select the text or the object which is going to be used as a link
 - Type in the complete URL in the **Link** option, through the *Properties inspector*, then *Enter*
 - Determine which window the linked page is going to be opened. It can be specified in *Properties inspector* through **Target**



Another way to create a hyperlink is through the menu **Insert, Hyperlink**.

Example of an External Link

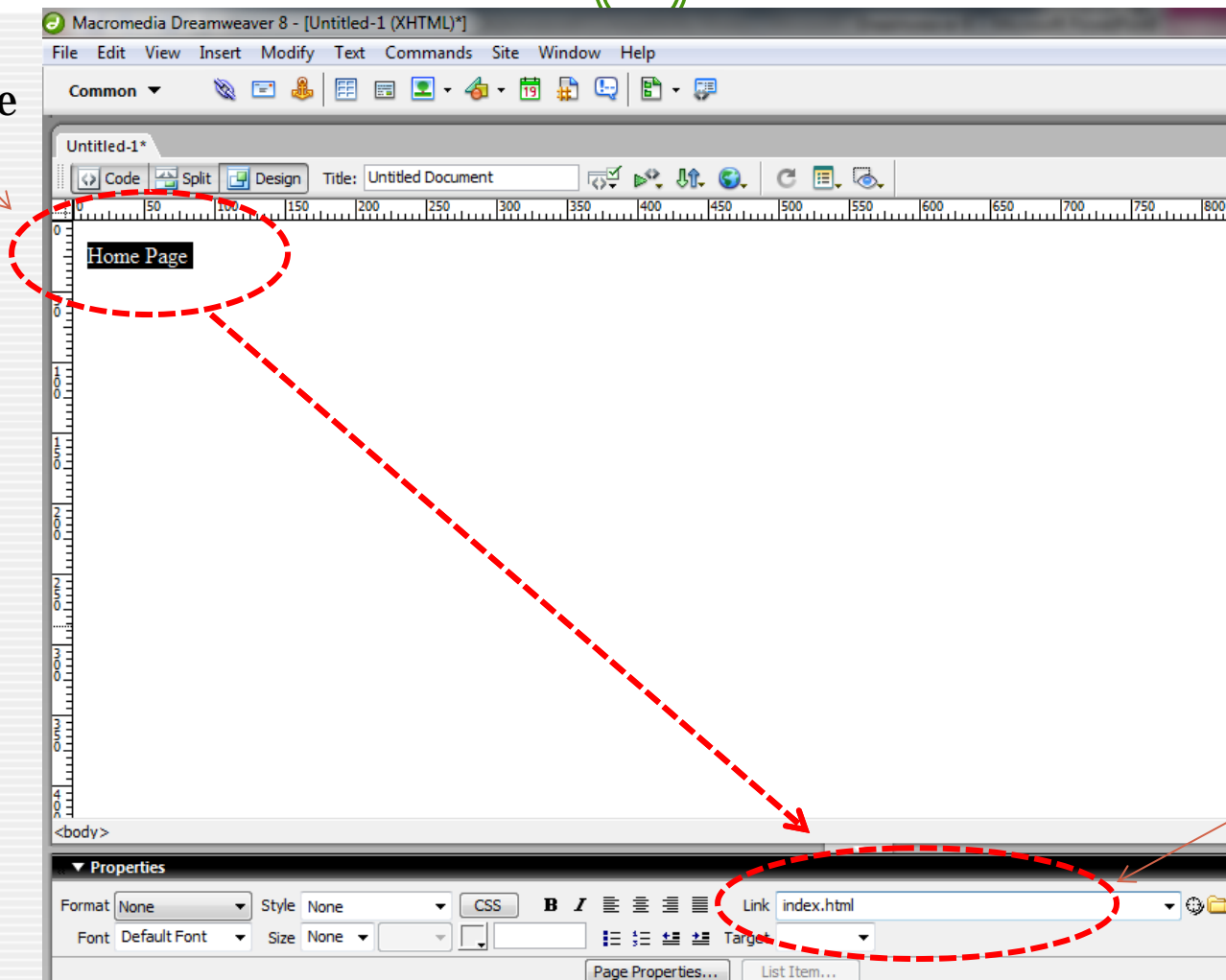
Type in the
text



Complete
URL

Example of an Internal Link

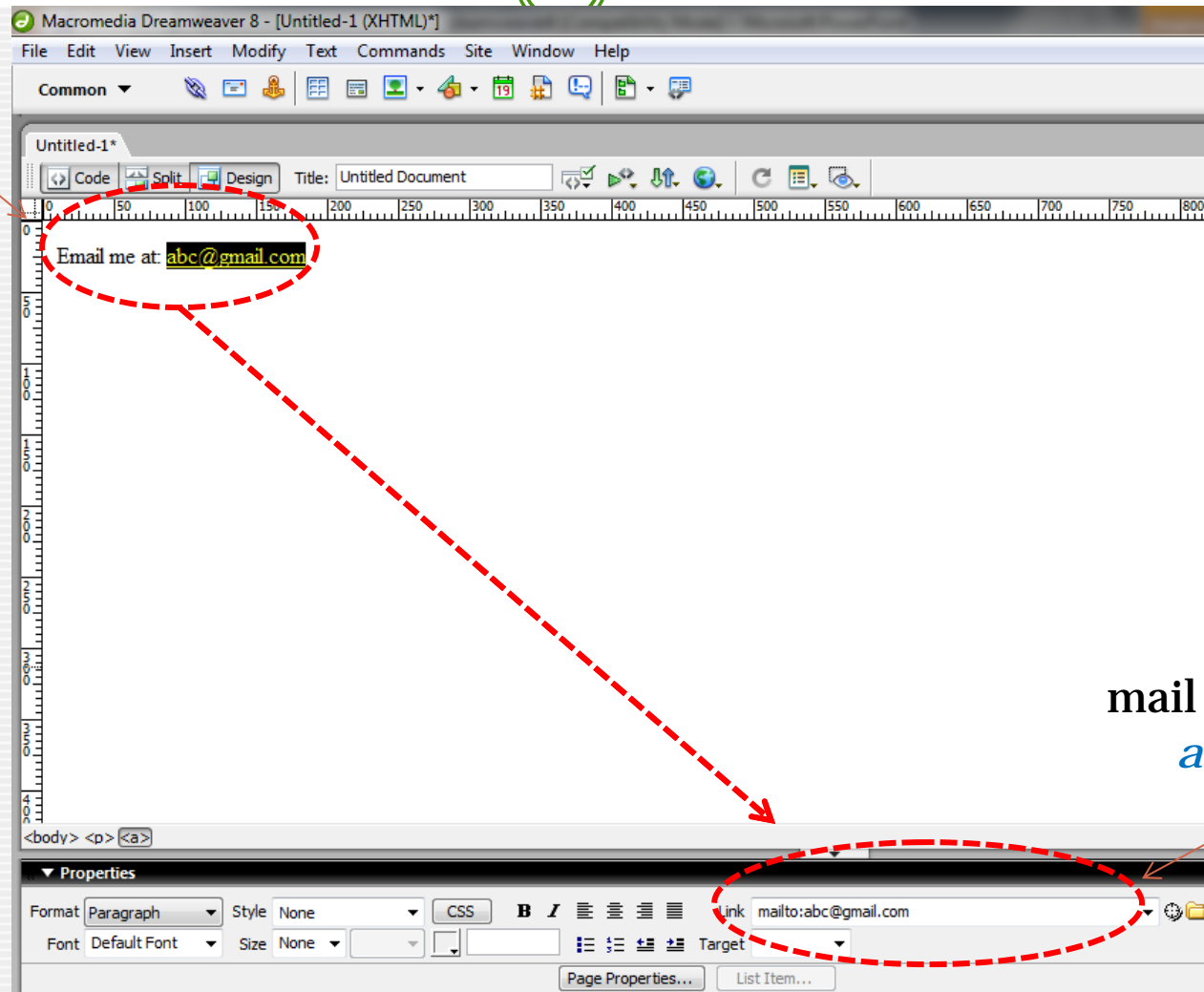
Type in the
text



Page title

Example of Email Link

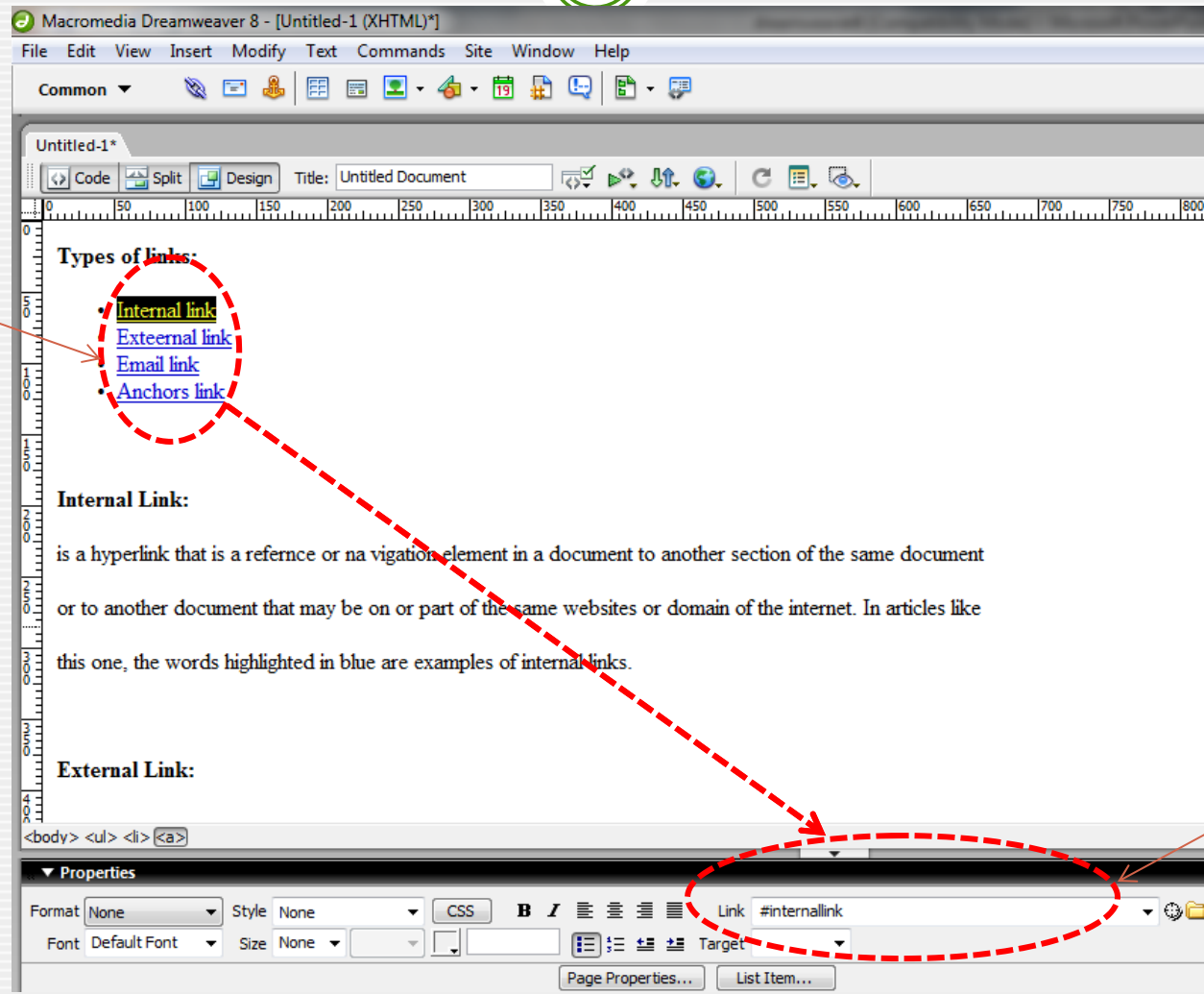
Type in the
email address



mail to: *e-mail
address*

Example of Anchor Link

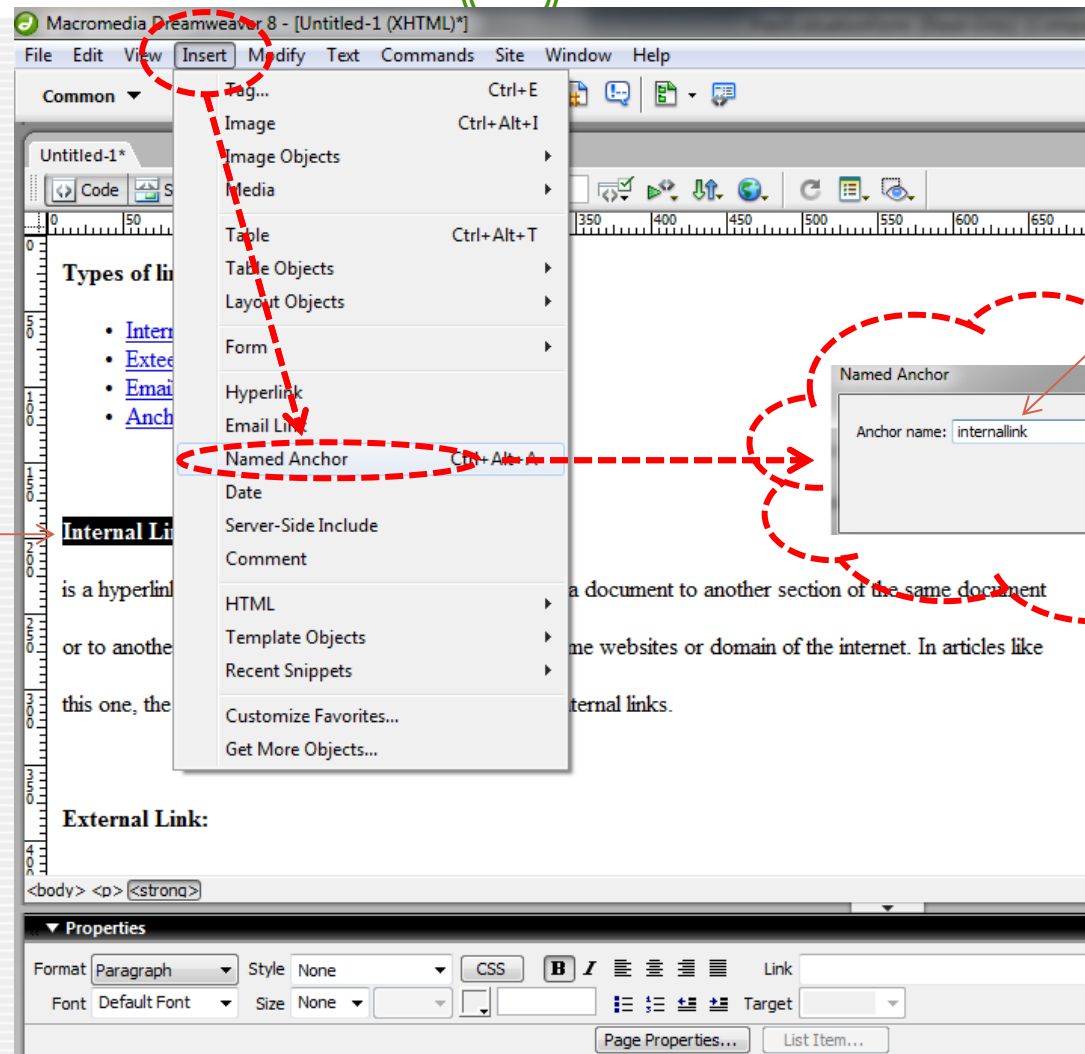
Highlight the word



#*name*

Example of Anchor Link

Highlight the word



name

Duplicate Page



- Do NOT forget to save each step along the way.
- Once the index.html page is set up as desired with the logo, header, and navigation buttons, it can serve as a template for creating new pages.
- Be sure to save each new page with a new name in the folder that you have created.

Preview in Browser



- You can preview your design before publishing.
- To preview in a browser:
 - Go to **File** menu
 - Select **Preview in Browser**
 - Choose your desired browser

Helpful Links



- <http://bmb.cu.edu.tr/mcuma/files/Dreamweaver8.pdf>
- <http://www.youtube.com/watch?v=wdxSylClUvo>
- http://www.youtube.com/watch?v=M_y8eA3czGc&feature=relmfu
- <http://www.youtube.com/watch?v=IvkoZDxtDBU&feature=relmfu>
- <http://www.youtube.com/watch?v=m4wrfOLg-tg&feature=relmfu>
- <http://www.youtube.com/watch?v=-oSnqGRdKtM&feature=relmfu>