

# Histology

# 4 types of tissues

---

- ① 1-Epithelial tissue
- ② 2-Connective tissue
- ③ 3-Muscle tissue
- ④ 4-Nervous tissue

# Epithelial tissue

---



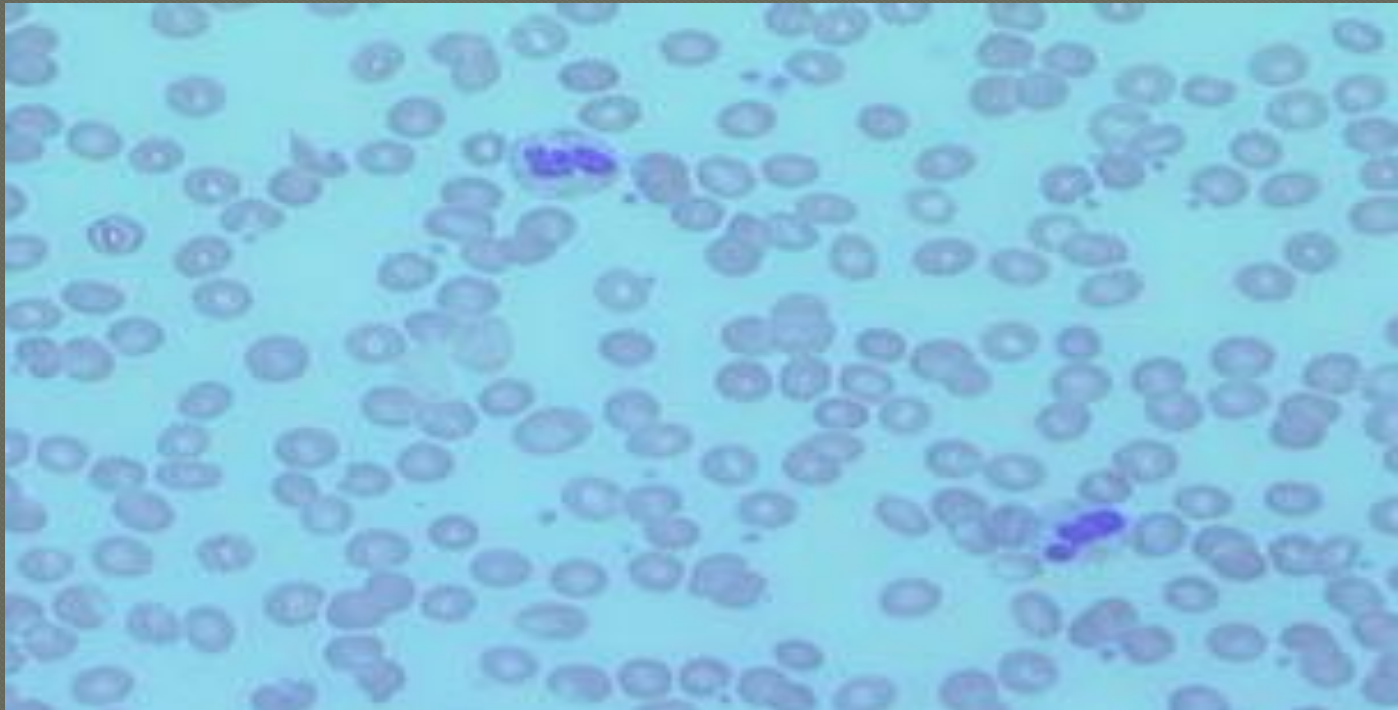
# Connective tissue

---

- ① 1- Tendons & ligaments,
- ② 2- blood.
- ③ 3- fat.
- ④ 4- bone.
- ⑤ 5-Hyaline cartilage.

# Smear of Human Blood

---



# Hyaline Cartilage



Trachea

C, chondrocyte

la = lacuna



# Bone



# Muscle tissue

---

- ① 1- Straited muscle.(Skeletal)
- ② 2- Cardic muscle.
- ③ 3-smooth muscle

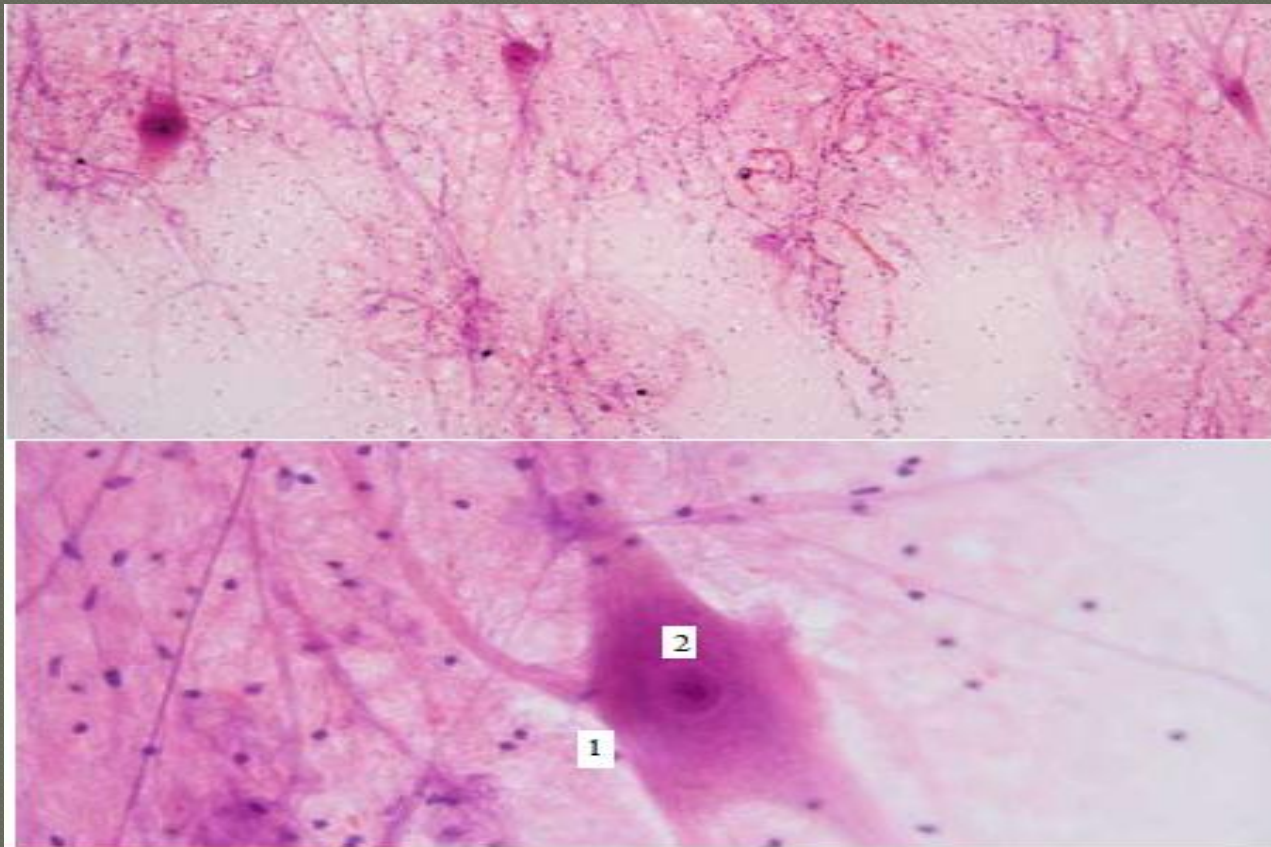


# Nervous tissue

---

- 1- Nerve cell (neuron).
- 2-Spinal cord.

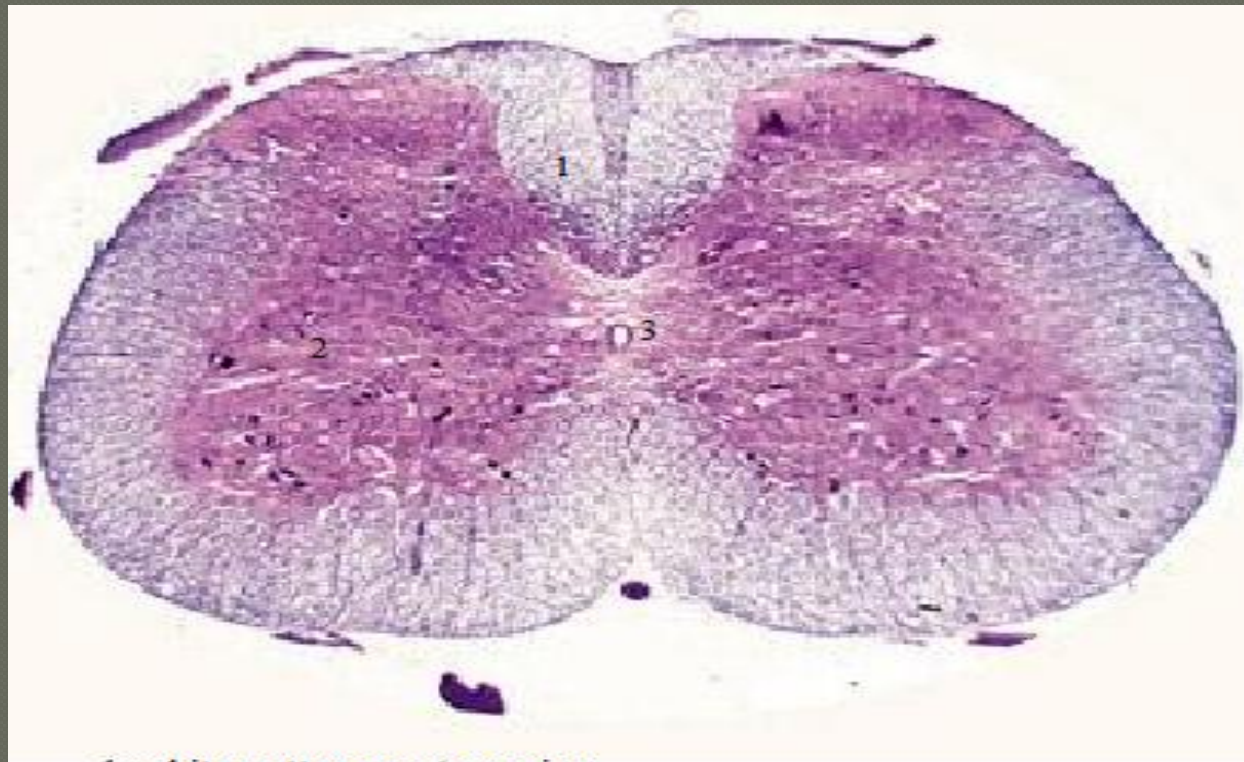
# Nerve cell



1-neuron cell body

2-nucleus of neuron

# Spinal cord



1- white matter or outer region

2- grey matter or inner region

3- central canal