

Student Name:.....

Student ID:.....



College of Applied Studies and Community Service
King Saud University (KSU)

CT 1314 - Homework#3

Answer the following questions:

1. Your company is working to save costs by conserving the power consumption of its servers.
Which of the default power plans should you select for Windows Server 2008 servers to help in saving the power?

.....

2. You have noticed lately that your server is running very slowly, especially when switching between programs. You see that the C: partition had a very limited size of free space and it is your boot partition. You have a second partition, D: that has 100 GB of free space.

- a. How can you monitor the usage of the memory by the programs?

.....

- b. Can you suggest a solution to speed up your server knowing that the size of your RAM is actually very small approximately 256 MB and there are no more expansion slots for more memory?

.....

3. Your university is planning to develop its computer labs by replacing its old ink jet printers with new laser printers that have a PnP technology to ease the process of installation. The printers will be attached only to the server computers in the labs. The server computers had Windows Server 2008 operating system and are configured to have *Print Services role*.

- a. What should the lab technician consider to ensure that the PnP will work properly?

1).....

2).....

3).....



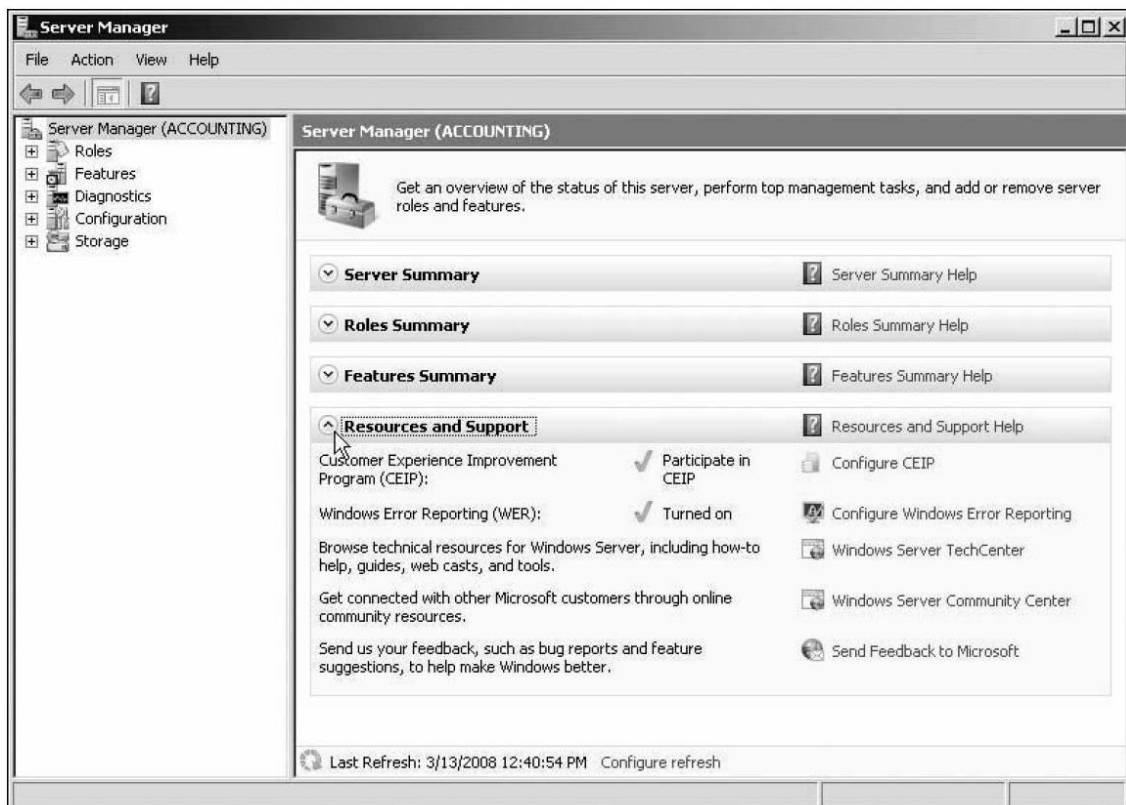
College of Applied Studies and Community Service
King Saud University (KSU)

4. A software company wants to secure its local network from viruses and attackers by closing all unused ports and disabling any unused applications that may cause dangerous holes to the network. Its network is managed through a Windows Server 2008 server.
- a. Can you guide the network administrator to the window that helps him performing this task?

.....

5. Give example of three administrative functions that can be done from the following window?

- 1).....
- 2).....
- 3).....



Good Luck ☺