

بِسْمِ اللَّهِ الرَّحْمَنِ الرَّحِيمِ

Taxonomy

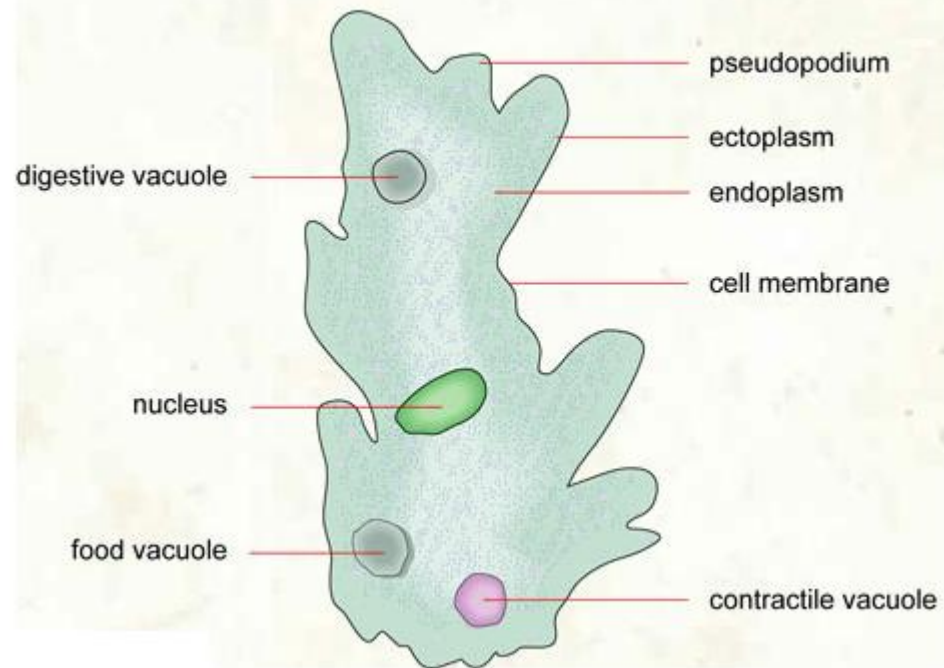
# Kingdoms

---



- 
- ◉ Kingdom: Protista
  - ◉ Subkingdom: Protozoa
  - ◉ A-Phylum: sarcomastigophora
  - ◉ 1- subphylum: Sarcodina
  - ◉ 1-Genus: *Amoeba*

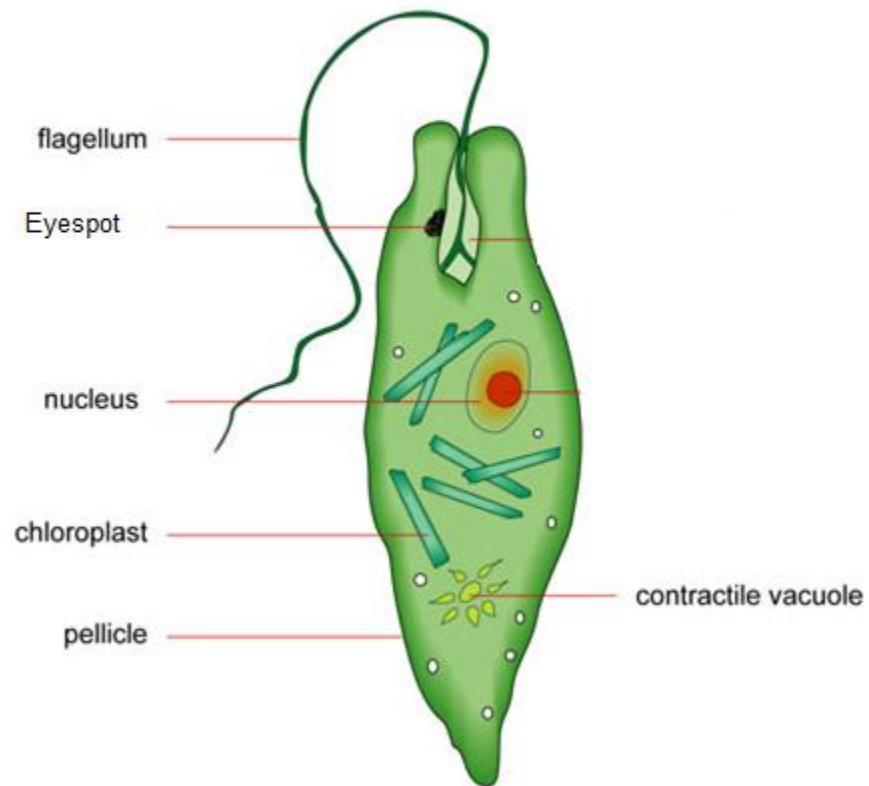
## STRUCTURE OF AN AMOEBA



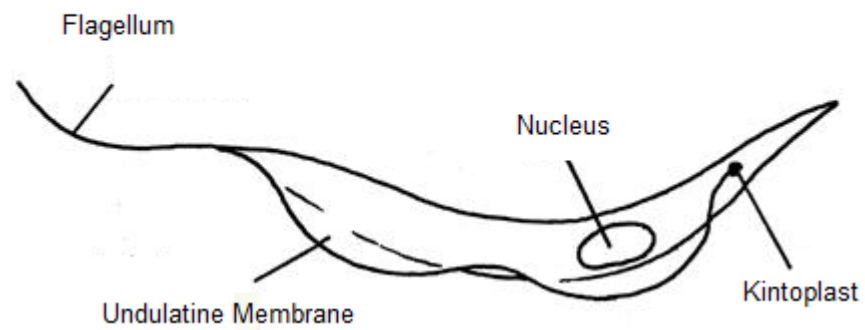
- 
- ◉ 2-Genus: Entamoeba
  - ◉ Species: Coli

- 
- ◉ 2- Subphylum: Mastigophora
  - ◉ Genus:
  - ◉ 2-1 Euglena
  - ◉ 2-2 Trypanosoma

## STRUCTURE OF A EUGLENA



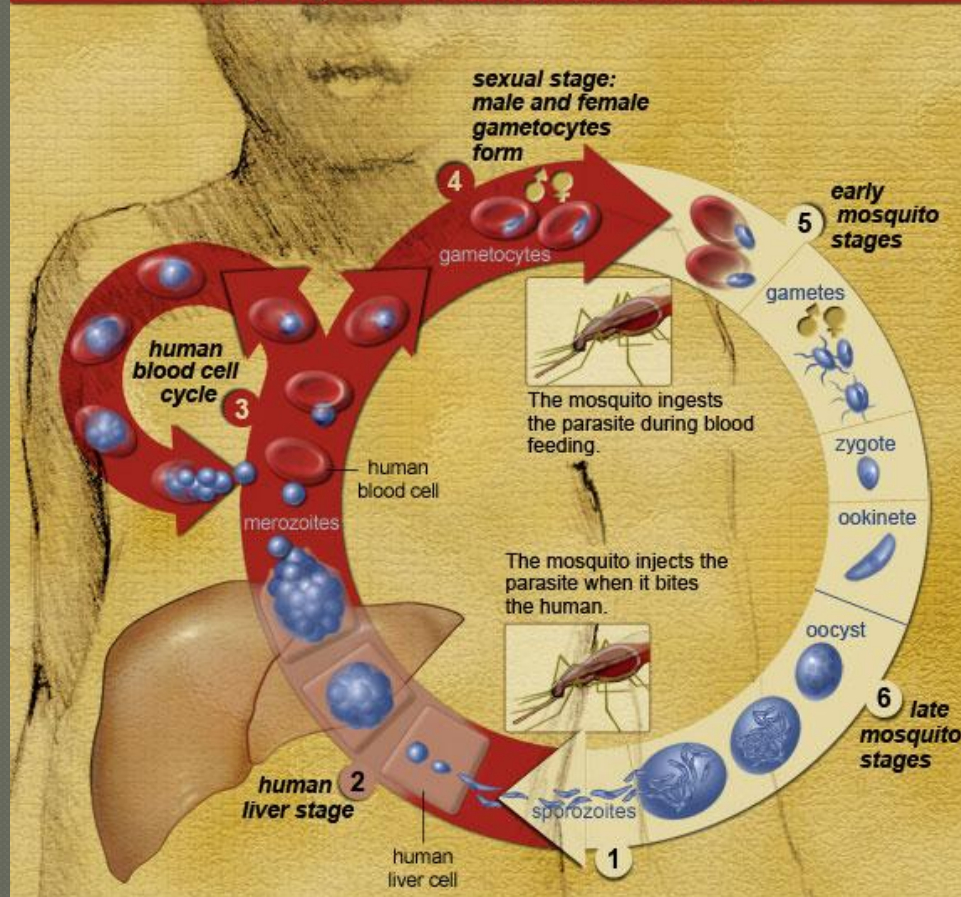
### Structure of Trypanosoma





- 
- ◉ B-Phylum: Apicomplexa.
  - ◉ Genus:
  - ◉ Plasmodium

## Life Cycle of the Malaria Parasite



- 
- ◉ B-Phylum: ciliophora
  - ◉ Genus:
  - ◉ Paramecium

## Structure of Paramecium

