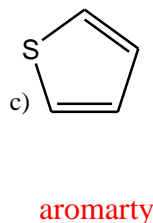
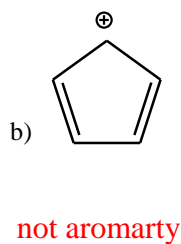
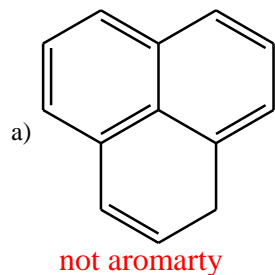


## Exercise Ch 4

Which of these structure will be **aromatic**:

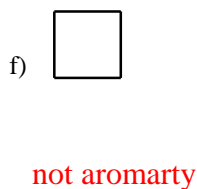
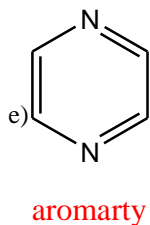
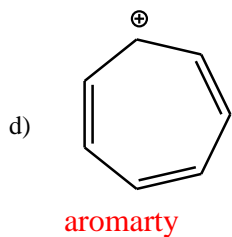


Aromatic:

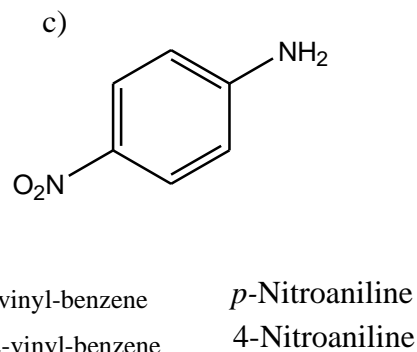
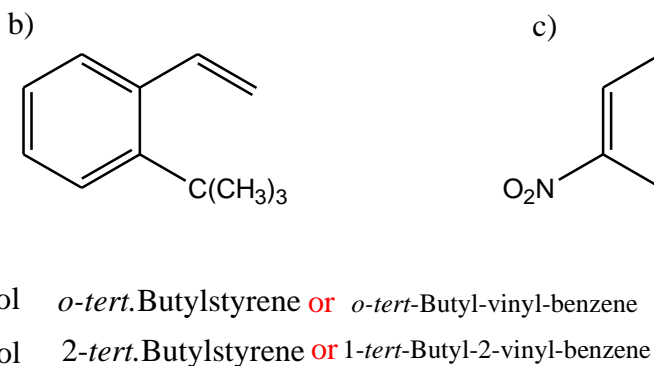
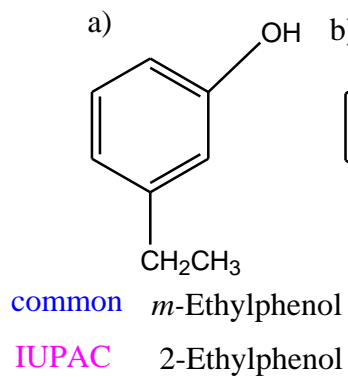
$$4n+2=6$$

$$4n=4$$

$$n=1$$

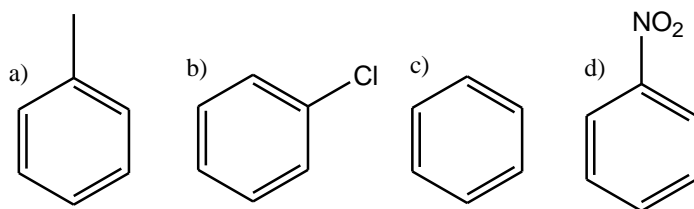


Name each of the following structures (**common name and IUPAC**)



## Exercise Ch 4

Arrange the following series of compounds in **decreasing order** of reactivity toward **Nitration**



a > c > b > d

Complete the following reactions

