

1- Which of the following structures is an aromatic?



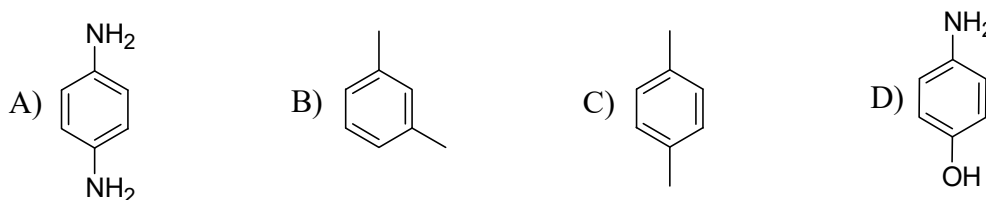
2- Chlorination of toluene in presence of light gives

- A) 1-Chlorotoluene
- B) Benzyl chloride
- C) 1,4-Dichlorotoluene
- D) 2-Chlorotoluene

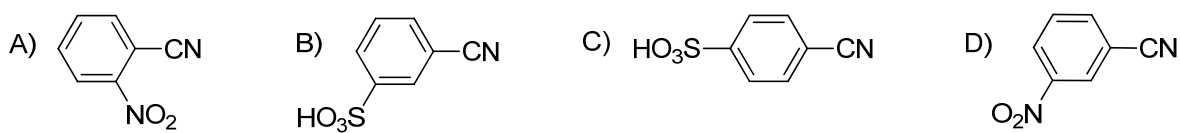
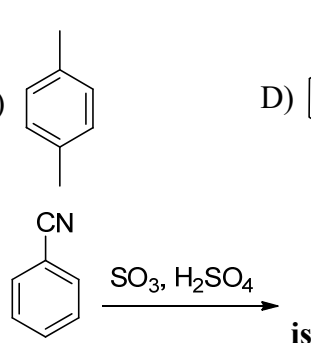
3- Which of the following groups is deactivating in electrophilic aromatic substitution reactions?

- A)  $-OCH_3$
- B)  $-NH_2$
- C)  $-OH$
- D)  $-COOH$

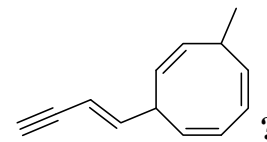
4- Which of the following compounds has the common name *p*-xylene?



5- The product of the following reaction



6- How many  $\pi$  bonds are present in the following compound



- A) 5
- B) 12
- C) 6
- D) 7