

Distribution of mercury in molluscs, seawaters and coastal sediments of Tarut Island, Arabian Gulf, Saudi Arabia



Mohamed Youssef ^{a, b, *}, Abdelbaset El-Sorogy ^{a, c}, Khaled Al-Kahtany ^a

^a Geology and Geophysics Department, College of Science, King Saud University, Saudi Arabia

^b Geology Department, Faculty of Science, South Valley University, 83523 Qena, Egypt

^c Geology Department, Faculty of Science, Zagazig University, Egypt

ARTICLE INFO

Article history:

Received 14 January 2016

Received in revised form

26 September 2016

Accepted 30 September 2016

Available online 3 October 2016

Keywords:

Mercury
Coastal sediments
Seawaters
Mollusca
Tarut Island
Arabian Gulf
Saudi Arabia

ABSTRACT

In order to assess the distribution of mercury along the Tarut coast, Arabian Gulf, Thirty eight (38) sediment samples, twenty six (26) seawater samples, and forty (40) Mollusca specimens were collected from the Tarut coast. The concentrations of Mercury in the sediments of the studied area (average = 0.55 µg/g) are generally high comparing to the reported values from the Gulf of Oman, Red Sea, and the Gulf of Finland. The concentrations of Hg exceeded the wet threshold safety values (median effect concentration (MEC), and probable effect concentration (PEC) indicating possible Hg contamination. According to the Swedish Environmental Protection Agency (SEPA), thirty four (34) samples occur in class 4 and four (4) samples occur in class 5, which means that the sediments of the Tarut Island are largely contaminated with Hg. Enrichment factor (EF) results (average = 1.76) suggested that, the coastal sediments of the Tarut Island are considered to entirely originate from the crustal materials or natural processes. The studied sediments show lower values ($I_{geo} < 0$) indicating that the sediments are unpolluted. These sediments according to contamination factor (CF) are considered contaminated with Hg ($1 < CF < 3$). The Hg concentration in water samples (average = 30 µg/g) considered high. Comparison with Hg contents in coastal sediments, seawaters and molluscs in the Red Sea, the Arabian Gulf suggested that the studied samples have higher concentrations of Hg. The suggested natural sources of Hg in the study area are the weathering and decomposition of neighboring deserts. The anthropogenic sources are the land reclamation, petrochemical industries, boat exhaust emissions, oil leakage, desalination plants and sewage effluents exceeded in the study area and in Al Jubail industrial city to the north.

© 2016 Elsevier Ltd. All rights reserved.

1. Introduction

Coastal environments are often extensively contaminated by receiving various pollutants such as toxic metals, nutrients, and pesticides (Readman et al., 1992; Bhakta and Munekage, 2010; El-Sorogy et al., 2012, 2013a, b). The major anthropogenic sources which contribute significantly to the natural background of toxic metals in soils and sediments of coastal regions are: mining and smelting, industrial sources, urban waste, waste water discharges and shipping activities.

Mercury is a volatile element emitted from both natural and anthropogenic sources (Nishimura et al., 1983). Although the

atmospheric Hg input to the ocean is 2-fold higher than that from the rivers (Lantzy and Mackenzie, 1979), all the mercury moving over the surface of the globe is anthropogenic (Moore and Morre, 1976). The main species of Hg in the atmosphere is gaseous elemental Hg or Hg (0), which has a long atmospheric residence time (6–12 months) and can thus undergo long-range transport (Selin, 2009). In the atmosphere, Hg(0) can react with strong oxidants, such as halogen radicals, to form chemical species termed reactive gaseous Hg (RGM) and particulate Hg (PHg), both of which have relatively short atmospheric residence times and therefore are rapidly deposited to underlying surfaces, such as landscapes and water bodies (Steffen et al., 2008).

Many studies in the Arabian and Oman gulfs have dealt with fauna, environmental assessment, and sedimentology (Bosch et al., 1995; Sadiq and Alam, 1989; Pourang et al., 2005; Loughland et al., 2012; Naser, 2013; Almasoud et al., 2015; El-Sorogy and Youssef, 2015; El-Sorogy et al., 2016a,b; Youssef et al., 2015).

* Corresponding author. Department of Geology and Geophysics, College of Science, King Saud University, P.O. Box: 2455, Riyadh 11451, Saudi Arabia.

E-mail addresses: myousefgeology@gmail.com, mymohamed@ksu.edu.sa (M. Youssef).

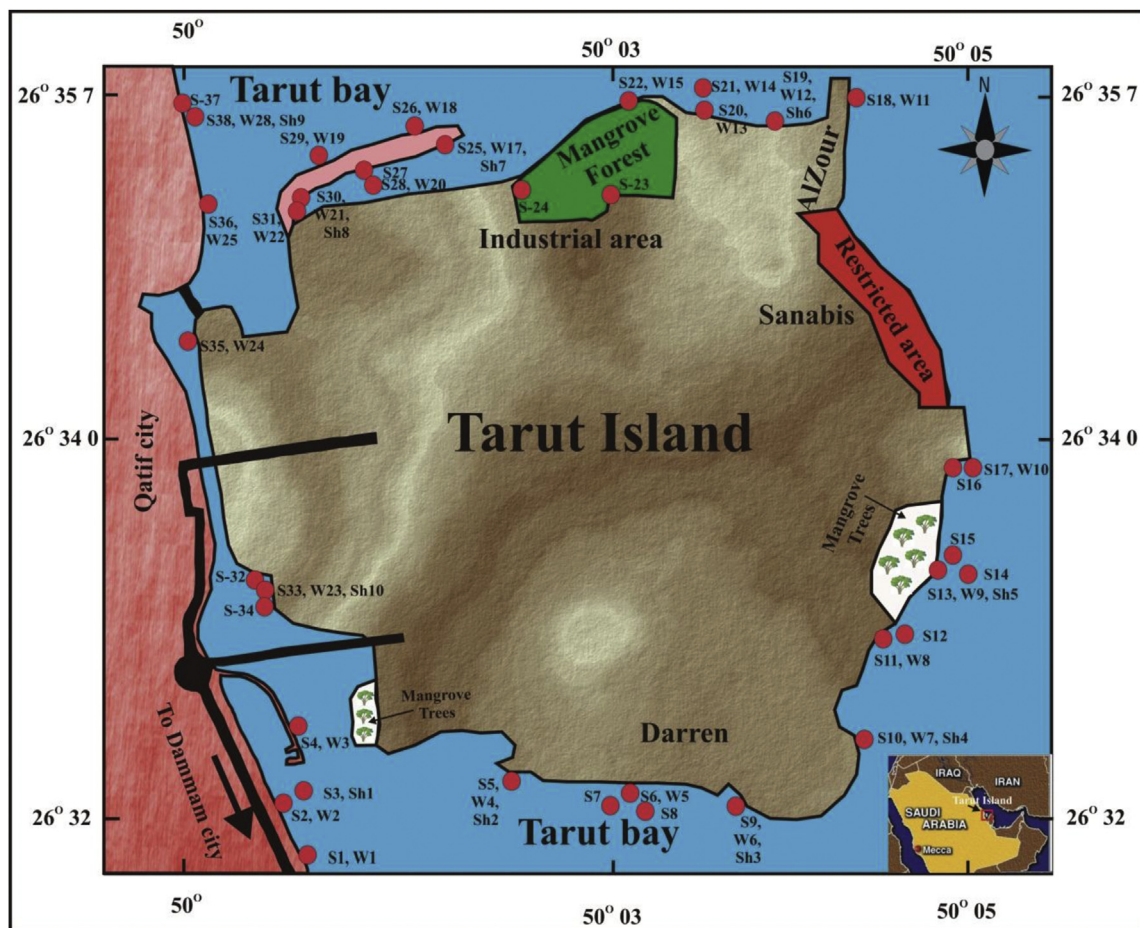


Fig. 1. Location map of the study area and the sites of the collected samples. S = sediments sample, w = water sample, sh = Mollusca sample.

The main objectives of the present study are: 1) evaluate the levels of Hg along the Tarut coast using coastal sediments, seawaters and mollusk shells, 2) assess the impact of environmental changes along the coast, 3) document the difference between gastropods and bivalves in Hg uptake, 4) comparison between the rate of pollution in the Tarut coast and neighboring coasts.

2. Material and methods

2.1. Study area

38 coastal sediments, 26 unfiltered seawaters and 40 mollusk specimens were collected in December 2014 from the subtidal zone of the Tarut Island coast (Fig. 1). Tarut is an island in the Arabian

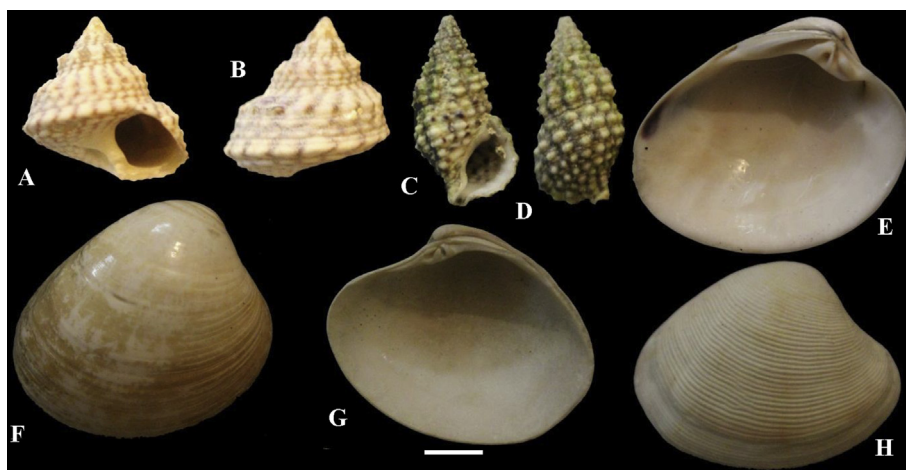


Fig. 2. A, B, Trochus (Infundibulops) erithreus; C, D, Clypeomorus bifasciatus persicus; E, F, Amiantis umbonella; G, H, Protapes sinuosa.

Table 1

Minimum, Maximum and averages of Hg, enrichment factor, geoaccumulation index and contamination factor of the studied sediments samples.

	Hg			Fe	EF	Geo	CF
	Sediments	Seawaters	Molluscs				
Minimum	0.3	0.19	0.4	599	0.49	−1.22	0.75
Maximum	1.7	0.44	1.2	12924	5.71	1.54	4.25
Average	0.55	0.30	0.763	3447.1	1.76	−0.34	1.38

Gulf belonging to the Eastern Province of Saudi Arabia, now connected by three causeways to Qatif. It is six kilometers from the coast; the island has an area of 70 square kilometers, and is the longest island in the Gulf after Qeshm Island, extending from Ra's Tannurah in the north to Qatif in the west.

2.2. Methodology

The sediment samples were stored in a clean polyethylene bags until metals analysis was performed. The sediment samples were prepared by accurately weighing around 100 mg of samples into a dry and clean Teflon microwave digestion vessels, 2 ml of HNO₃, 6 ml HCl and 2 ml HF were added to the vessels. Samples were digested using scientific microwave (Model Milestone Ethos 1600). The resulting digest was transferred to a 15 ml plastic volumetric

tube and made up to mark using deionized water. A blank digest was carried out in the same way. For Hg and Fe analysis (Enrichment factor analysis) the sediments was analyzed by ICP-MS (Inductively Coupled Plasma-Mass Spectrometer); NexION 300D (Perkin Elmer USA).

Total dissolved solids (TDS), redox potential (Eh), electrical conductivity and dissolved oxygen (DO) were directly measured in seawater samples in-situ. Specimens of the gastropods, *Trochus* (*Infundibulops*) *erithreus* Brocchi, 1823; *Clypeomorus bifasciatus persicus* Houbbrick, 1985 and the bivalves, *Amiantis umbonella* (Lamarck, 1818); *Protapes sinuosa* (Lamarck, 1818) were collected from 10 representative stations along the studied coast (Fig. 1). Mollusks were chosen because these are: 1) present all over the 10 studied stations and easy to sampling, 2) benthic sessile and abundant, 3) filter feeders and have the potential to bioconcentrate contaminants present in the water or within sediments. The Mollusk shells are illustrated in Fig. 2.

3. Concentration of mercury

3.1. Mercury in sediments

The concentrations of Hg in sediments of the study area (Table 1, Fig. 3, a) are quite high (0.3–1.7 µg/g) comparing to other areas. Within the adjacent areas (Table 2) Hg levels were vary between 0.19 and 2.34 µg/g in coastal sediments from Qatar (Al-Madfa et al.,

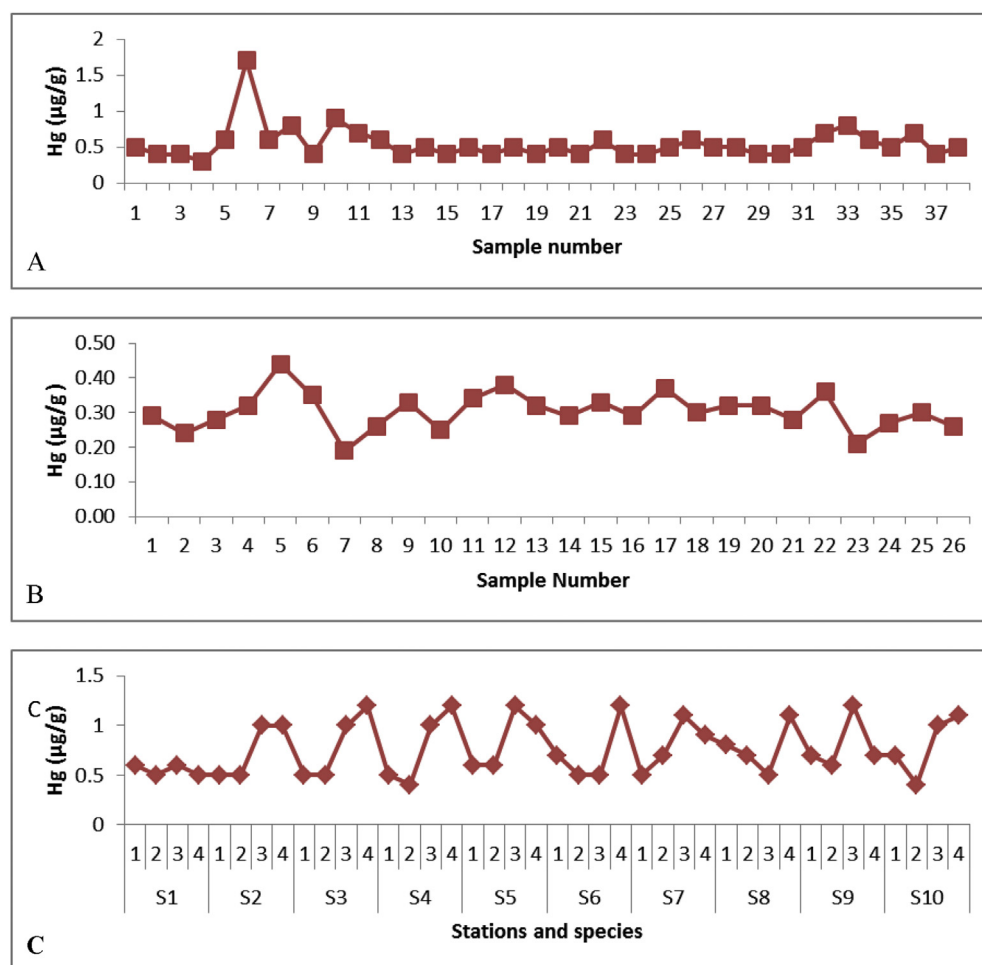


Fig. 3. Concentrations of Hg in coastal sediments (A), seawaters (B) and mollusc specimens (C), (1 *Trochus* (*Infundibulops*) *erithreus*; 2 *Clypeomorus bifasciatus persicus*; 3 *Amiantis umbonella*; 4 *Protapes sinuosa*).

Table 2

Comparison between Hg in the present coastal sediments and other worldwide localities.

Location	Reference	Hg ($\mu\text{g g}^{-1}$)
Tarut Island, Arabian Gulf	Present study	0.3–1.7
Red Sea, Saudi Arabia	Youssef et al., submitted	0.01–0.02
Qatar	de Mora et al. (2004)	0.0015–0.0167
UAE		0.0006–0.0022
Bahrain		0.0025–0.220
Oman		<0.0001–0.011
Gulf of Aqaba	Al-Taani et al. (2014)	2.36–2.37
Gulf of Finland	Vallius et al. (2007)	0.09–0.32
Background shale	Turekian and Wedepohl (1961)	0.4
Background continental crust	Taylor (1964)	0.08
Daliao River System, China	Lin et al. (2012)	0.01–0.1

Table 3

A- Number of samples that had metal concentrations above the sediment effect data of ERL and ERM in the collected samples. Data after Long et al., 1996, ERL = Effect range low, ERM = effect range median. B- Classification of sediment Hg contamination according to the Swedish environmental Protection Agency ($\mu\text{g g}^{-1}$ dry weight). from Vallius et al., 2007.

Metal ($\mu\text{g g}^{-1}$)		Guidelines		Study area	No. of samples below the ERL		No. of samples between ERL and ERM			No. of samples above the ERM	
		ERL	ERM	Average							
Hg		0.15	0.71	0.55	0		34			4	
Metal ($\mu\text{g g}^{-1}$)	Class 1 little or none	Samples in class 1		Class 2 slight	Samples in class 2	Class 3 significant	Samples in class 3	Class 4 large	Samples in class 4	Class 5 very large	Samples in class 5
Hg	<0.04	0		0.04–0.10	0	0.10–0.27	0	0.27–0.7	34	>0.7	4

Data after Long et al., 1996.

ERL = Effect range low, ERM = effect range median.

1994), from 0.032 to 0.27 $\mu\text{g/g}$ in surface sediments of Arabian Gulf (Kureishy and Ahmed, 1994), and from 0.042 to 0.375 $\mu\text{g/g}$ (Al-Majed and Rajab, 1998). The Hg content in the surface sediments of Oman Gulf also is very low ranges from 0.0001 to 0.22 $\mu\text{g/g}$ (de Mora et al., 2004). Hg concentration is very low also in the Red Sea coastal sediments range 0.0003–0.133 $\mu\text{g/g}$ (Pan et al., 2011). Gulf of Aqaba surface sediments have very high Hg concentration (2.36–2.37 $\mu\text{g/g}$) and these values were interpreted by Al-Taani et al. (2014) as a geologic source of Hg to seawater. They reported higher levels of Hg with average values of 105 $\mu\text{g/g}$ and 264 $\mu\text{g/g}$ in the rock samples. The average concentration of Hg in Northeastern Gulf of Finland is 0.22 $\mu\text{g/g}$ (Table 2). The concentration of Mercury in some samples in the studied area exceeded the ERM, indicating possible Hg contamination (Table 3) (see Fig. 4).

3.2. Mercury in seawaters

The distribution of Hg is nearly random along the studied coast, in spite of recorded high values in the southwestern and north-eastern samples. Hg content in seawater samples vary from 0.19 to 0.44 $\mu\text{g/L}$ with an average of 0.30 $\mu\text{g/L}$ (Fig. 3, b). Comparison made between averages of Hg content in coastal sediments and seawater reveal that sediment samples contain 2-fold higher mercury. Table 4 illustrates comparisons between Hg values in the present study with others from surface seawaters in neighboring and abroad gulfs and seas. These values are much higher than those recorded from seawaters of Gulf of Aqaba (Al-Taani et al., 2014), Red Sea coast (Youssef et al., submitted).

3.3. Mercury in mollusk shells

Hg content in the studied seashells varies from 0.4 to 1.2 $\mu\text{g/g}$ with an average of 0.763 $\mu\text{g/g}$ (Fig. 3, c). The average of Hg content in mollusk specimens are 2-fold higher mercury comparing to the water sample. Low Hg values are recorded in *Clypeomorus bifasciatus*

in station 4, 10 and the high Hg concentration is reported in *Pro-tapes sinuosa* in station 3, 4. Bivalves are good accumulators for Hg than gastropods with high concentrations in *A. umbonella* (stations 2, 3, 4, 7, 9, 10) and *P. sinuosa* (stations 2, 3, 4, 5, 6, 8, 10).

Table 5 illustrates comparisons between present Hg values with others mollusks in neighboring gulfs and seas. The present Hg values are higher than the values recorded in *Pinctada radiata*, *Saccostrea cucullata*, *Circentia callipyga*, *Pinna muricata* and *Spondylus* sp. from coasts of Qatar, UAE, Bahrain, Oman along Arabian Gulf (de Mora et al., 2004).

4. Contamination level

Using the Effect range low (ERL) and the effect range median (ERM) (Table 3), thirty four (34) samples lie between the ERL and ERM. According to the Swedish Environmental Protection Agency (SEPA), thirty four (34) samples are largely contaminated, 4 samples are considered very large contaminated (Vallius et al., 2007).

Enrichment factor (EF) analysis (Simex and Helz, 1981; Zhang et al., 2012) suggested that mercury in coastal sediments of the Tarut Island is considered to entirely originate from natural processes. The Minimum, maximum and average EF values for Hg are tabulated in Table 1. Based on Muller scales (Muller, 1981) of geo-accumulation index (Igeo), the studied sediments show lower values (Igeo<0) indicating that the sediments are unpolluted. Also according to contamination factor (Cf) of Hökanson (1980) and Savvides et al. (1995), these sediments are considerable contaminated with Hg ($1 < \text{CF} < 3$).

The sources for Hg in the studied sediments, seawaters and mollusks are natural and for low extent anthropogenic. The weathering and decomposition of rocks from neighboring deserts, in the form of dust storms repeated especially annually in April and May natural are believed to be the sources of Hg. Anthropogenic source of Hg are believed to a wide range of potential effects of the coastal ecosystems, particularly from point and non-point sources

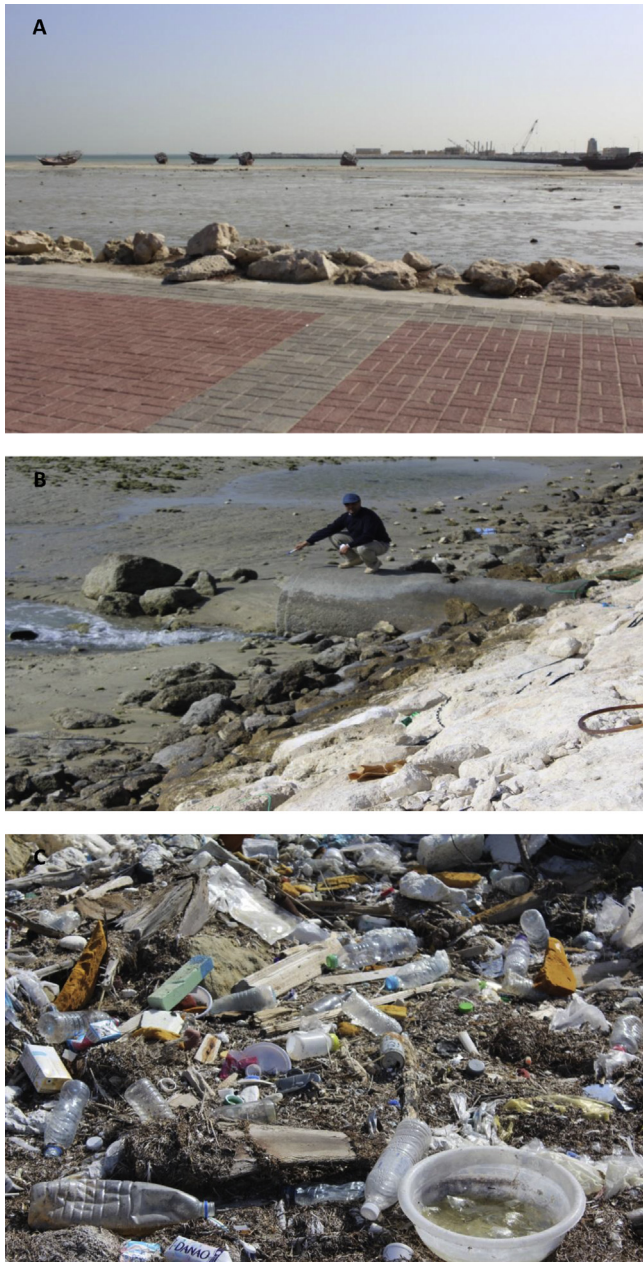


Fig. 4. A, crowded fishing boats in the intertidal zone, station 3; B, Wastewater and desalination units upon the coast, station 8; C, solid wastes in the form of plastic bottles in the intertidal zone, station 6.

of pollution. Discharge of industrial effluents, desalination plants, sewage, irrigation, and urban runoff are the main sources of Hg from Tarut Island itself or from Al-Jubail industrial city, about 60 Km to the north of the study area, which is highly populated with intense industrial activities.

Table 4
Comparison between Hg in the present seawater samples and other worldwide localities.

Location	Reference	Hg ($\mu\text{g g}^{-1}$)
Tarut Island, Arabian Gulf	Present study	0.19–0.44
Jordanian Gulf of Aqaba	Al-Taani et al., 2014	0.018–0.123
Red Sea	Youssef et al., submitted	0.003–0.01

Table 5

Comparison between Hg in the present molluscs and other worldwide localities.

Location	References	Hg ($\mu\text{g g}^{-1}$)
Tarut Island, Arabian Gulf	Present study	0.763
Qatar	de Mora et al. (2004)	0.315
UAE		0.130
Bahrain		0.074
Oman		0.116

5. Conclusions

Analyses of mercury in coastal sediments, seawaters and mollusks along the Tarut coast indicated that the present Hg values are high in comparison with those recorded from the adjacent areas of Arabian Gulf, Gulf of Aqaba, and Red Sea and exceed those recorded in shale and continental crust backgrounds. The enrichment factor, geoaccumulation index and contamination factor indicated that the coastal sediments are enriched with Hg as a result of natural and anthropogenic inputs. The Tarut coast are considered large to very large contaminated with Hg. The natural source of Hg in the study area is believed to be the dust storms result from weathering and decomposition of rocks from neighbouring deserts. Anthropogenic sources of Hg (Fig. 3) are believed to discharge of industrial effluents, desalination plants, sewage, irrigation, and urban runoff especially from Al-Jubail industrial city to the north.

Acknowledgement

This Project was funded by the National Plan for Science, Technology and Innovation (MAARIFAH) (12-ENV2805-02), King Abdulaziz City for Science and Technology, Kingdom of Saudi Arabia, Award Number (12- ENV2805-02).

References

- Al-Madfa, H., Dahab, A.O., Holail, H., 1994. Mercury Pollution in Doha (Qatar) Coastal Environment. *Environmental Toxicology and Chemistry*, vol. 13, pp. 725–735.
- Al-Majed, N.B., Rajab, W.A., 1998. Levels of mercury in the marine environment of the ROPMEsea area. In: Otsaki, A., Abdulraheem, M.Y., Reynolds, R.M. (Eds.), *Offshore Environment of the ROPMEsea Area after the War-Related Oil Spills*. Terra Scientific, Tokyo, pp. 124–147.
- Al-Majed, N.B., Rajab, W.A., 1998. Levels of mercury in the marine environment of the ROPMEsea area. In: Otsaki, A., Abdulraheem, M.Y., Reynolds, R.M. (Eds.), *Offshore Environment of the ROPMEsea Area after the War-Related Oil Spills*. Terra Scientific, Tokyo, pp. 124–147.
- Almasoud, F.I., Usman, A.R., Al-Farraj, A.S., 2015. Heavy metals in the soils of the Arabian Gulf coast affected by industrial activities: analysis and assessment using enrichment factor and multivariate analysis. *Arab. J. Geosci.* 8, 1691–1703.
- Al-Taani, A.A., Batayneh, A., Nazzal, Y., Ghrefat, H., Elawadi, E., Zaman, H., 2014. Status of trace metals in surface seawater of the Gulf of Aqaba, Saudi Arabia. *Mar. Poll. Bull.* 86, 582–590.
- Bhakta, J.N., Munekage, Y., 2010. Spatial distribution and contamination status of arsenic, cadmium and lead in some coastal shrimp (*Macrobrachium rosenbergii*) farming ponds of Viet Nam. *Pac. J. Sci. Tech.* 11 (1), 606–615.
- Boschi, D., Dance, S.P., Moolenbeek, R.G., Oliver, P.G., 1995. *Seashells of Eastern Arabia*. Motivate Publ., p. 296.
- de Mora, S., Fowler, S.W., Wyse, E., Azemard, S., 2004. Distribution of heavy metals in marine bivalves, fish and coastal sediments in the Gulf and Gulf of Oman. *Mar. Pollut. Bull.* 49, 410–424.
- El-Sorogy, A.S., Abdelwahab, M., Nour, H., 2012. Heavy metals contamination of the Quaternary coral reefs, Red Sea coast. *Egypt. Environ. Earth Sci.* 67, 777–785.
- El-Sorogy, A.S., El Kammar, A., Ziko, A., Aly, M., Nour, H., 2013a. Gastropod shells as pollution indicators, Red Sea coast. *Egypt. J. Afr. Earth Sci.* 87, 93–99.
- El-Sorogy, A.S., Nour, H., Essa, E., Tawfik, M., 2013b. Quaternary coral reefs of the Red Sea coast, Egypt: diagenetic sequence, isotopes and trace metals contamination. *Arab. J. Geosci.* 6, 4981–4991.
- El-Sorogy, A., Youssef, M., 2015. Assessment of heavy metal contamination in intertidal gastropod and bivalve shells from central Arabian Gulf coastline, Saudi Arabia. *J. Afr. Earth Sci.* 111, 41–53.
- El-Sorogy, A., Youssef, M., Kh, Al-Kahtany, 2016a. Integrated assessment of the Tarut Island coast, Arabian Gulf, Saudi Arabia. *Environ. Earth Sci.* (Accepted).
- El-Sorogy, A., Youssef, M., Al-Kahtany, Kh, Al-Otaiby, N., 2016b. Assessment of arsenic in coastal sediments, seawaters and molluscs in the Tarut Island,

- Arabian Gulf, Saudi Arabia. *J. Afr. Earth Sci.* 113, 65–72.
- Hökanson, L., 1980. An ecological risk index for aquatic pollution control. a sedimentological approach. *Water Res.* 14, 975–1001.
- Kureishy, T.W., Ahmed, M.H., 1994. Total Mercury Distribution in Surface Sediments from the Arabian Gulf, vol. 14. *Qatar Univ. Sci. J.* pp. 390–394.
- Lantzy, R., Mackenzie, F., 1979. Atmospheric trace elements: global cycles and assessment of man's impact. *Geochim. Cosmochim. Acta* 43, 511–525.
- Lin, Y., Vogt, R., Larssen, T., 2012. Environmental mercury in China: a review. *Environ. Toxicol. Chem.* 31, 2431–2444.
- Long, E., Robertson, A., Wolfe, D., Hameedi, J., Sloane, G., 1996. Estimates of the spatial extent of sediment toxicity in major US estuaries. *Env. Sci. Tech* 30, 3585–3592.
- Loughland, R.A., Al-Abdulkader, K.A., Wyllie, A., Burwell, B.O., 2012. Anthropogenic induced geomorphological change along the Western Arabian Gulf coast. In: Piacentini, T. (Ed.), *Studies on Environmental and Applied Geomorphology*, pp. 191–218. In Tech.
- Moore, J., Morre, E., 1976. *Environmental Chemistry*. Academic Press, New York, p. 398.
- Muller, G., 1981. Die Schwermetallbelastung der Sedimenten des Neckars und Seiner Nebenflüsse. *Chemiker-Zeitung* 6, 157–164.
- Naser, H.A., 2013. Assessment and management of heavy metal pollution in the marine environment of the Arabian Gulf: a review. *Mar. Poll. Bull.* 72, 6–13.
- Nishimura, M., Konishi, S., Matsunaga, K., 1983. Mercury concentration in the ocean. *J. Oceanogr. Soc. Jpn.* 39, 295–300.
- Pan, K., Lee, O., Qian, P., Wang, X., 2011. Sponges and sediments as monitoring tools of metal contamination in the eastern coast of the Red Sea, Saudi Arabia. *Mar. Pollut. Bull.* 62, 1140–1146.
- Pourang, N., Nikouyan, A., Dennis, J., 2005. Trace element concentrations in fish, surficial sediments and water from northern part of the Persian Gulf. *Environ. Monit. Assess.* 109, 293–316.
- Readman, J.W., Liong, W., Kwong, K., Mee, L.D., Bartocci, J., Nilve, G., Rodriguez-Solano, J.A., Gonzalez-Faryas, F., 1992. Persistent organophosphorus pesticides in Tropical marine environments. *Mar. Poll. Bull.* 24, 398–402.
- Sadiq, M., Alam, I., 1989. Metal concentrations in pearl oyster, *Pinctada radiata*, collected from Saudi Arabian coast of the Arabian Gulf. *Bull. Environ. Contam. Toxicol.* 42, 111–118.
- Savvides, C., Papadopoulos, A., Haralambous, K.J., Loizidou, M., 1995. Sea sediments contaminated with heavy metals: metal speciation and removal. *Water Sci. Technol.* 32 (9–10), 65–73.
- Selin, N.E., 2009. Global biogeochemical cycling of mercury: a review. *Annu. Rev. Environ. Resour.* 34, 43–63.
- Simex, S.A., Helz, G.R., 1981. Regional geochemistry of trace elements in Cheapeake Bay. *Environ. Geol.* 3, 315–323.
- Steffen, A., Douglas, T., Amyot, M., Ariya, P., Aspmo, K., Berg, T., Bottenheim, J., Brooks, S., Cobbett, F.D., Dastoor, A., Dommergue, A., Ebinghaus, R., Ferrari, C., Gardfeldt, K., Goodsite, M.E., Lean, D., Poulain, A.J., Scherz, C., Skov, H., Sommar, J., Temme, C., 2008. A synthesis of atmospheric mercury depletion event chemistry in the atmosphere and snow. *Atmos. Chem. Phys.* 8, 1445–1482.
- Taylor, S.R., 1964. Abundance of chemical elements in the continental crust: a new table. *Geochim. Cosmochim. Acta* 28, 1273–1285.
- Turekian, K.K., Wedepohl, K.H., 1961. Distribution of the elements in some major units of the earth's crust. *Geol. Soc. Amer.* 72, 175–192.
- Vallius, H., Ryabchuk, D., Kotilainen, A., 2007. Distribution of heavy metals and arsenic in soft surface sediments of the coastal area off Kotka, northeastern Gulf of Finland, Baltic Sea. In: Vallius, H. (Ed.), *Holocene Sedimentary Environment and Sediment Geochemistry of the Eastern Gulf of Finland, Baltic Sea*. *Geol. Surv. Finland, Special Paper*, vol. 45, pp. 33–48.
- Youssef, M., El-Sorogy, A.S., Al-Kahtany, K.H., Al-Otaibi, N., 2015. Environmental assessment of coastal surface sediments Tarut Island, Arabian gulf (Saudi Arabia). *Mar. Pollut. Bull.* 96, 424–433, 2015.
- Youssef, M., El-Sorogy, A., Al-Otaibi, S., 2016. Spatial distribution and environmental assessment of metals in sea water of Sharm Al-Kharrar lagoon, Rabigh (Saudi Arabia). *J. Geol. Soc. India* (submitted).
- Zhang, G., Liu, D., Wu, H., Chen, L., Han, Q., 2012. Heavy metal contamination in the marine organisms in Yantai coast, northern Yellow Sea of China. *Ecotoxicol.* 21, 1726–1733.