

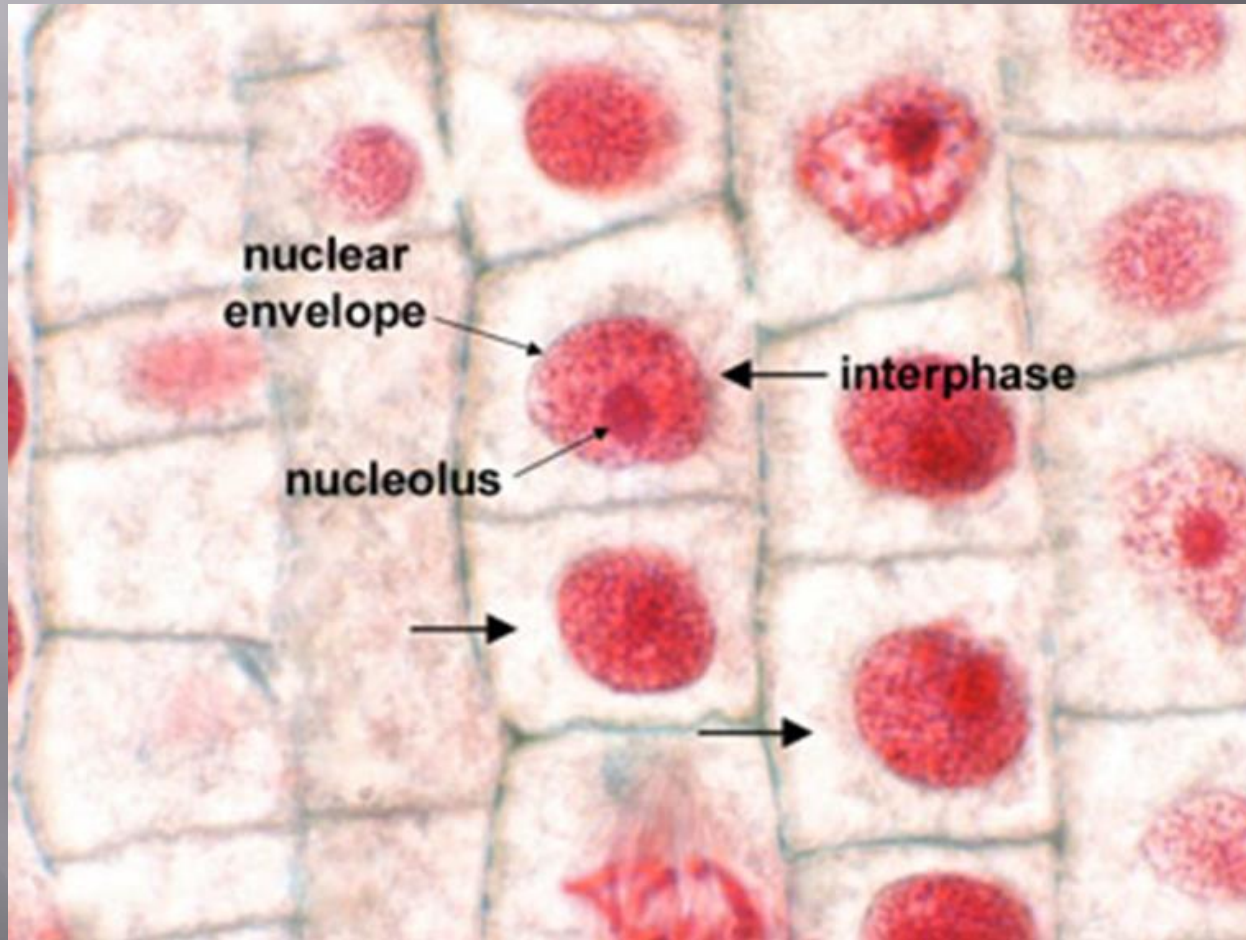
Cell Division

- A type of cell division that produces two cells identical to the parent cell.
- It occurs in Somatic Cells in Roots and Stems tips . It is an important to repair of damaged cells.
- It transfer Chromosomes contained the DNA that makes up the genetic material of a cell.
- Has 4 major stages Prophase, Metaphase, Anaphase, and Telophase.

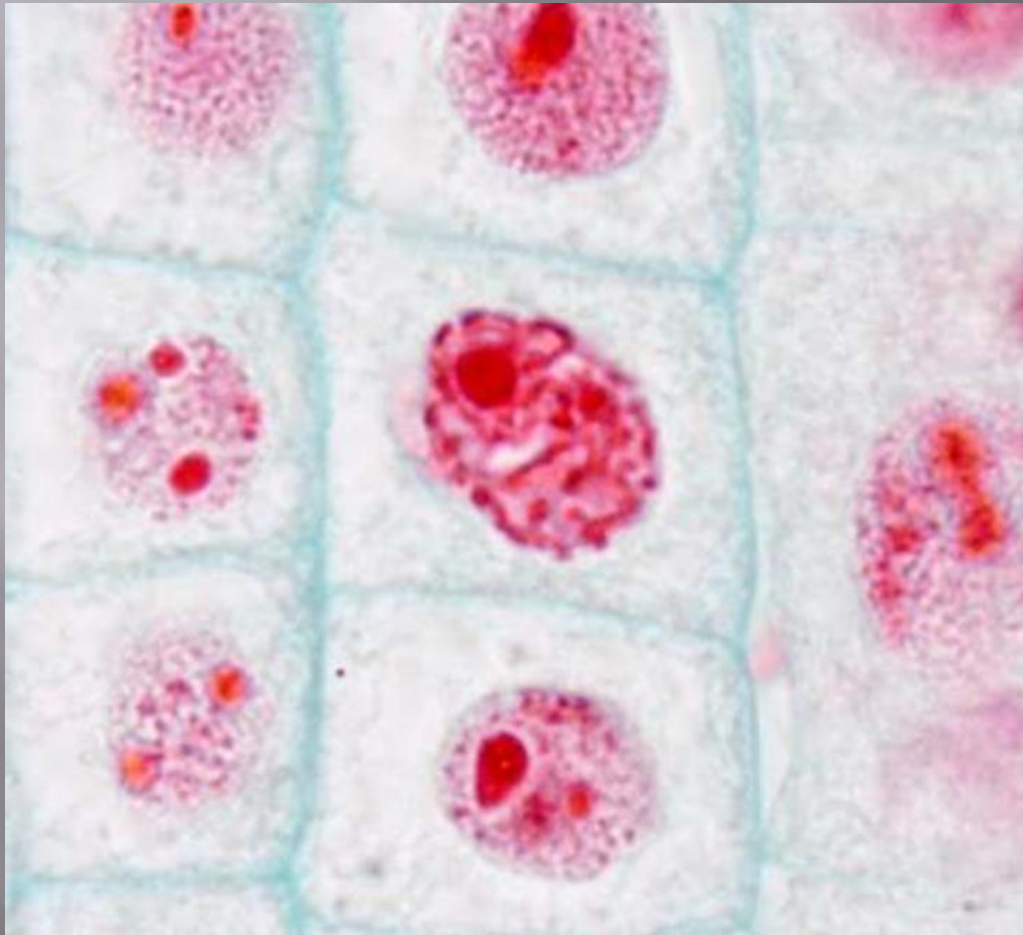
Exsample:

Onion root which you can visualize all of the stages of mitosis.

الطور البيني (interphase)



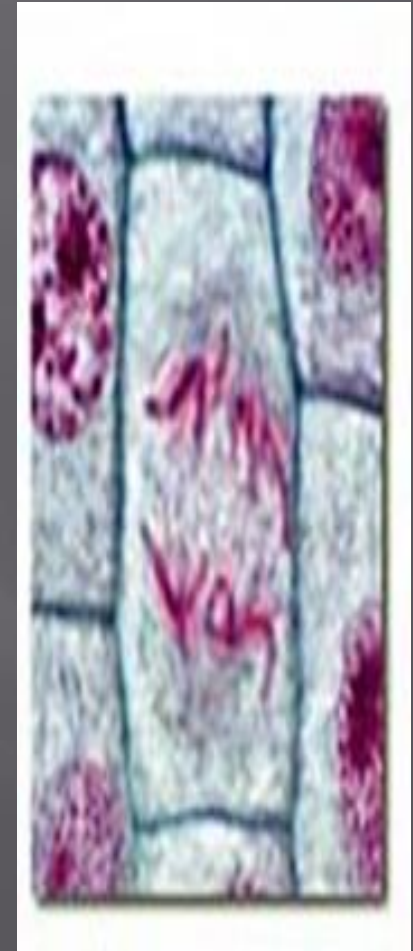
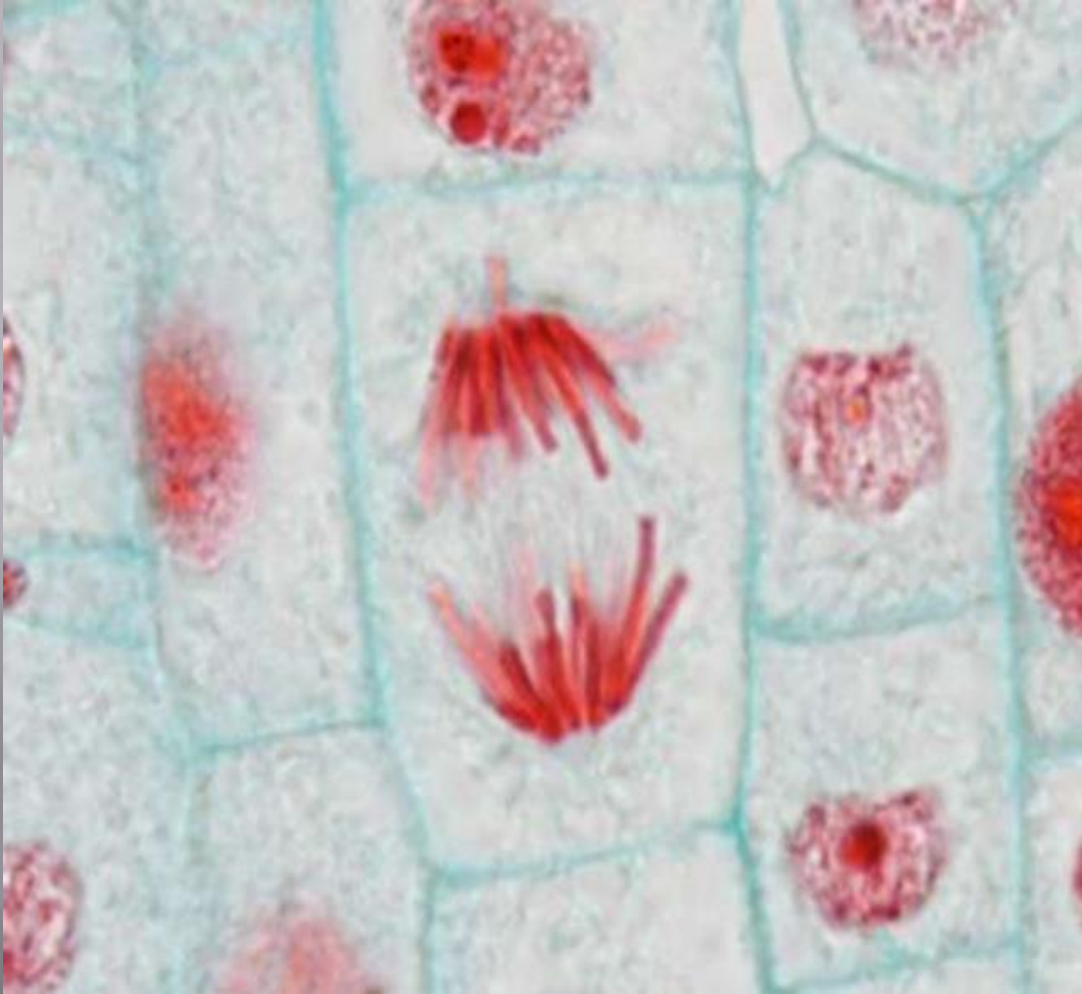
الطور التمهيدي *Prophase*



- الطور الاستوائي (meta phase)



Anaphase الطور الانفصالي



الطور النهائي (Telophase)

