

Chapter 2: Application of the definite integral

Table of contents

- 1 Area Between Curves.
- 2 Volume Of A Solid Revolution
- 3 Volume Of A Solid Revolution (Cylindrical shells method)

Table of contents

1 Area Between Curves.

2 Volume Of A Solid Revolution

3 Volume Of A Solid Revolution (Cylindrical shells method)

Area Between Curves.

In this section we are going to look at finding the area between two curves.

QUESTION:

How we can determine the area between $y = f(x)$ and $y = g(x)$ on the interval $[a, b]$

Theorem 1.1 (Area Between Curves)

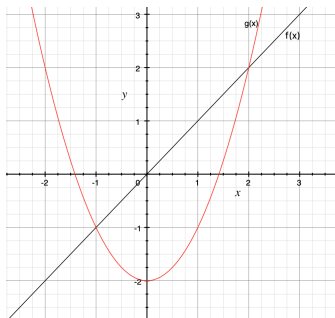
Let $f(x)$ and $g(x)$ be continuous functions defined on $[a, b]$ where $f(x) \geq g(x)$ for all x in $[a, b]$.

The area of the region bounded by the curves $y = f(x)$, $y = g(x)$ and the lines $x = a$ and $x = b$ is

$$\int_a^b [f(x) - g(x)] dx$$

Area Between Curves.

$$A = \int_a^b (\text{upper function}) - (\text{lower function}) \, dx, \quad a \leq x \leq b$$



$$A = \int_a^b f(x) - g(x) \, dx$$

The steps to calculate the area between curves

- 1 Find the intersection points between the curves.
- 2 determine the upper function and the lower function.
- 3 Calculate the integral:

$$A = \int_a^b (\text{upper function}) - (\text{lower function}) dx$$

Which give us the required area.

Area Between Two Curves (Example)

Example 1.1

Find the area enclosed between the graphs $y = x$ and $y = x^2 - 2$.

Solution

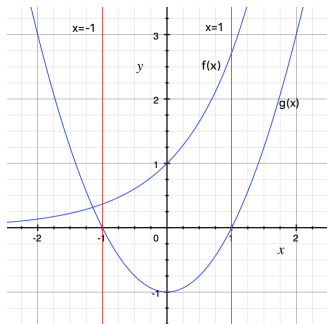
- 1 Points of intersection between $y = x^2 - 2$ and $y = x$ is:
$$x^2 - 2 = x \Rightarrow x^2 - x - 2 = 0 \Rightarrow (x + 1)(x - 2) = 0$$
$$\Rightarrow x = -1 \text{ and } x = 2$$
- 2 Note that upper function is $y = x$ and lower function is $y = x^2 - 2$
Note that $y = x^2 - 2$ is a parabola opens upward with vertex $(0, -2)$, and $y = x$ is a straight line passing through the origin.

- 3
$$A = \int_{-1}^2 x - (x^2 - 2) dx = \int_{-1}^2 x - x^2 + 2 dx = \left[\frac{x^2}{2} - \frac{x^3}{3} + 2x \right]_{-1}^2 = \frac{27}{6}$$

Area Between Two Curves (Example)

Example 1.2

Find the area enclosed between the graphs $y = e^x$, $y = x^2 - 1$, $x = -1$, and $x = 1$



Area Between Two Curves (Example)

Solution

Note that upper function is $y = e^x$ and lower function is $y = x^2 - 1$

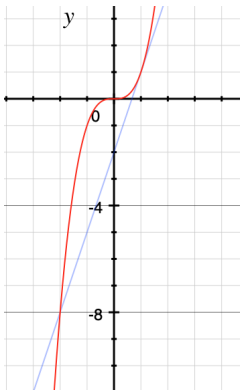
$$\begin{aligned} A &= \int_{-1}^1 e^x - (x^2 - 1) dx = \int_{-1}^1 e^x - x^2 + 1 dx = \left[e^x - \frac{1}{3}x^3 + x \right]_{-1}^1 \\ &= e - \frac{1}{e} + \frac{4}{3} \end{aligned}$$

Area Between Two Curves (Example)

Example 1.3

Compute the area of the region bounded by the curves

$$y = x^3 \text{ and } y = 3x - 2$$



Area Between Two Curves (Example)

- ① Points of intersection between $y = x^3$ and $y = 3x - 2$

$$x^3 - 3x + 2 = 0 \Rightarrow (x - 1)(x^2 + x - 2) = 0$$

$$\Rightarrow x = -2 \text{ and } x = 1$$

- ② Note that upper function is $y = x^3$ and lower function is $y = 3x - 2$

③
$$A = \int_{-2}^1 x^3 - (3x - 2) dx = \int_{-2}^1 x^3 - 3x + 2 dx$$

$$= \left[\frac{x^4}{4} - \frac{3}{2}x^2 + 2x \right]_{-2}^1$$

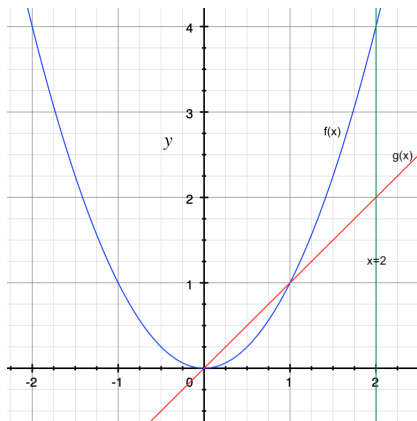
$$= \frac{3}{4} + 6 = \frac{27}{4}$$

Area Between Two Curves (Example)

Example 1.4

Find the area enclosed between the graphs

$f(x) = x^2$ and $g(x) = x$ between $x = 0$, and $x = 2$.



Area Between Two Curves (Example)

- 1 we see that the two graphs intersect at $(0, 0)$ and $(1, 1)$.
- 2 In the interval $[0, 1]$, we have $g(x) = x \geq f(x) = x^2$,
and in the interval $[1, 2]$, we have $f(x) = x^2 \geq g(x) = x$
- 3 Therefore the desired area is:

$$\begin{aligned} A &= \int_0^1 (x - x^2) dx + \int_1^2 (x^2 - x) dx = \left[\frac{x^2}{2} - \frac{x^3}{3} \right]_0^1 + \left[\frac{x^3}{3} - \frac{x^2}{2} \right]_1^2 \\ &= \frac{1}{6} + \frac{5}{6} = 1 \end{aligned}$$

Table of contents

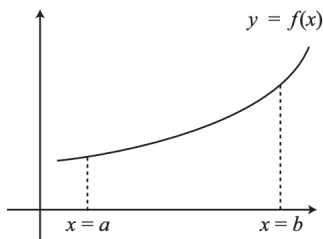
1 Area Between Curves.

2 Volume Of A Solid Revolution

3 Volume Of A Solid Revolution (Cylindrical shells method)

Volume Of A Solid Revolution (The Disk Method)

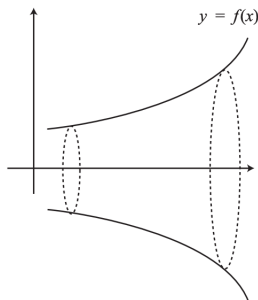
Suppose we have a curve $y = f(x)$



Imagine that the part of the curve between the ordinates $x = a$ and $x = b$ is rotated about the x-axis through 360 degree.

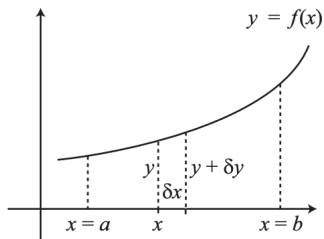
Volume Of A Solid Revolution (The Disk Method)

Now if we take a cross-section of the solid, parallel to the y-axis, this cross-section will be a circle.



But rather than take a cross-section, let us take a thin disc of thickness δx , with the face of the disc nearest the y-axis at a distance x from the origin.

Volume Of A Solid Revolution (The Disk Method)



The radius of this circular face will then be y . The radius of the other circular face will be $y + \delta y$, where δy is the change in y caused by the small positive increase in x , δx .

Volume Of A Solid Revolution (The Disk Method)

The volume δV of the disc is then given by the volume of a cylinder, $\pi r^2 h$, so that

$$\delta V = \pi r^2 \delta x$$

So the volume V of the solid of revolution is given by

$$V = \lim_{\delta x \rightarrow 0} \sum_{x=a}^{x=b} \delta V = \lim_{\delta x \rightarrow 0} \sum_{x=a}^{x=b} \pi y^2 \delta x = \pi \int_a^b [f(x)]^2 dx$$

Examples

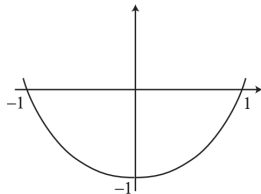
Example 2.1

The curve $y = x^2 - 1$ is rotated about the x-axis through 360 degree. Find the volume of the solid generated when the area contained between the curve and the x-axis is rotated about the x-axis by 360 degree.

$$V = \pi \int_a^b [f(x)]^2 dx = \pi \int_{-1}^1 [x^2 - 1]^2 dx$$

$$= \pi \int_{-1}^1 (x^4 - 2x^2 + 1) dx$$

$$= \left[\frac{x^5}{5} - \frac{2x^3}{3} + x \right]_{-1}^1 = \frac{16\pi}{15}$$

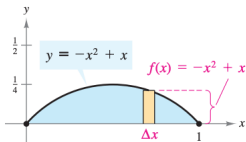


The graph of $y = x^2 - 1$

Examples

Example 2.2

Find the volume of the solid formed by revolving the region bounded by the graph of $f(x) = -x^2 + x$ and the x-axis about the x-axis.



Using the Disk Method, you can find the volume of the solid of revolution.

$$\begin{aligned} V &= \pi \int_0^1 [f(x)]^2 dx = \pi \int_0^1 [(-x^2 + x)^2] dx = \pi \int_0^1 (x^4 - 2x^3 + x^2) dx \\ &= \pi \left[\frac{x^5}{5} - \frac{2x^4}{4} + \frac{x^3}{3} \right]_0^1 = \frac{\pi}{30} \end{aligned}$$

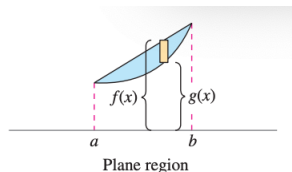
Volume Of A Solid Revolution (The Washer Method)

The Washer Method

Let f and g be continuous and nonnegative on the closed interval $[a, b]$, if $f(x) \geq g(x)$ for all x in the interval, then the volume of the solid formed by revolving the region bounded by the graphs of $f(x)$ and $g(x)$ ($a \leq x \leq b$), about the x-axis is:

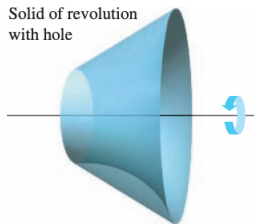
$$V = \pi \int_a^b \left\{ [f(x)]^2 - [g(x)]^2 \right\} dx$$

$f(x)$ is the **outer radius**
and $g(x)$ is the **inner radius**.



(a)

Solid of revolution
with hole



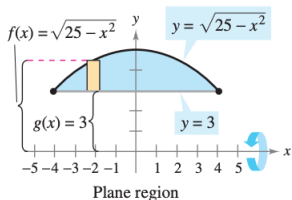
(b)

Examples

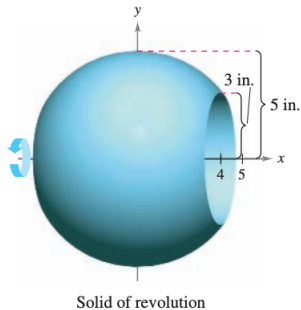
Example 2.3

Find the volume of the solid formed by revolving the region bounded by the graphs of $f(x) = \sqrt{25 - x^2}$ and $g(x) = 3$

We sketch the bounding region and the solid of revolution:



(a)



(b)

Examples

First find the points of intersection of f and g , by setting $f(x)$ equal to $g(x)$ and solving for x .

$$\sqrt{25 - x^2} = 3 \Rightarrow 25 - x^2 = 9 \Rightarrow x^2 = 16 \Rightarrow x = \pm 4$$

Using $f(x)$ as the outer radius and $g(x)$ as the inner radius, you can find the volume of the solid as shown.

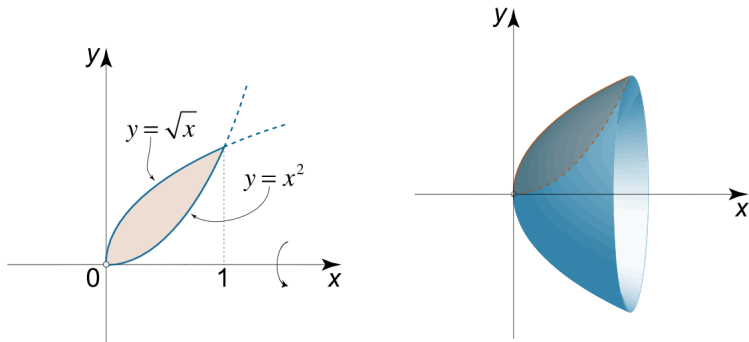
$$\begin{aligned} V &= \pi \int_a^b \left\{ [f(x)]^2 - [g(x)]^2 \right\} dx = \pi \int_{-4}^4 (\sqrt{25 - x^2})^2 - (3)^2 dx \\ &= \pi \int_{-4}^4 (16 - x^2) dx = \pi \left[16x - \frac{x^3}{3} \right]_{-4}^4 = \frac{256\pi}{3} \end{aligned}$$

Examples

Example 2.4

Calculate the volume of the solid obtained by rotating the region bounded by the parabola $y = x^2$ and the square root function $y = \sqrt{x}$ around the x -axis

We sketch the bounding region and the solid of revolution:



Examples

Both curves intersect at the points $x = 0$ and $x = 1$. Using the washer method, we have

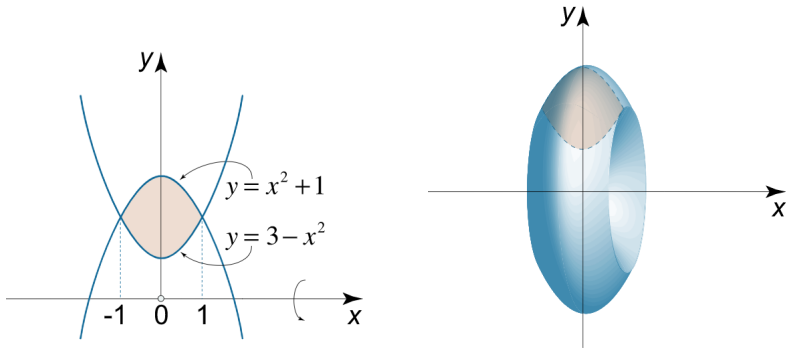
$$\begin{aligned} V &= \pi \int_a^b \left\{ [f(x)]^2 - [g(x)]^2 \right\} dx = \pi \int_0^1 (\sqrt{x})^2 - (x^2)^2 dx \\ &= \pi \int_0^1 (x - x^4) dx = \pi \left[\frac{x^2}{2} - \frac{x^5}{5} \right]_0^1 = \pi \left[\frac{1}{2} - \frac{1}{5} \right] = \frac{3\pi}{10} \end{aligned}$$

Examples

Example 2.5

Find the volume of the solid obtained by rotating the region bounded by two parabolas $y = x^2 + 1$ and $y = 3 - x^2$ about the x -axis.

We sketch the bounding region and the solid of revolution:



Examples

First we determine the boundaries a and b :

$$x^2 + 1 = 3 - x^2 \Rightarrow 2x^2 = 2 \Rightarrow x^2 = 1 \Rightarrow x = \pm 1$$

Hence the limits of integration are $a = 1$ and $b = -1$.

Using the washer method, we find the volume of the solid:

$$\begin{aligned} V &= \pi \int_a^b \left\{ [f(x)]^2 - [g(x)]^2 \right\} dx \\ &= \pi \int_{-1}^1 [(3 - x^2)^2 - (x^2 + 1)^2] dx = \pi \int_{-1}^1 (8 - 8x^2) dx \\ &= 8\pi \int_{-1}^1 (1 - x^2) dx = 8\pi \left[x - \frac{x^3}{3} \right]_{-1}^1 = \frac{32\pi}{3} \end{aligned}$$

Table of contents

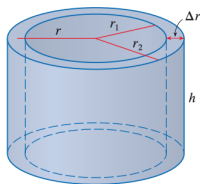
- 1 Area Between Curves.
- 2 Volume Of A Solid Revolution
- 3 Volume Of A Solid Revolution (Cylindrical shells method)

Volume Of A Solid Revolution (Cylindrical shells method)

The method of cylindrical shells

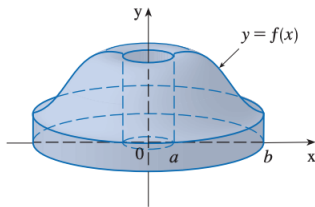
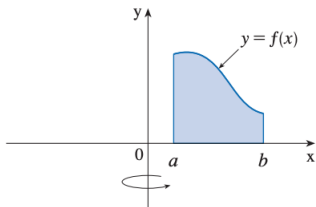
the cylindrical shell with inner radius r_1 , outer radius r_2 , and height h . Its volume V is calculated by subtracting the volume V_1 of the inner cylinder from the volume V_2 of the outer cylinder:

$$\begin{aligned} V &= V_2 - V_1 = \pi r_2^2 h - \pi r_1^2 h \\ &= \pi(r_2^2 - r_1^2)h = \pi(r_2 - r_1)(r_2 + r_1)h \\ &= 2\pi \frac{r_2 + r_1}{2} h(r_2 - r_1) \Rightarrow V = 2\pi r h \Delta r \end{aligned}$$



Volume Of A Solid Revolution (Cylindrical shells method)

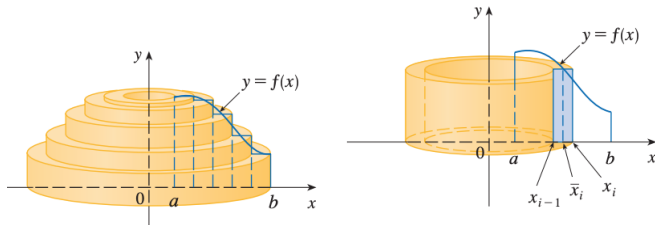
let be the solid obtained by rotating about the y -axis the region bounded by $y = f(x)$,
where $f(x) \geq 0$, $y = 0$, $x = a$ and $x = b$, where $b > a \geq 0$.



Volume Of A Solid Revolution (Cylindrical shells method)

We divide the interval into n subintervals $[x_{i-1}, x_{i+1}]$ of equal width and let \bar{x}_i be the midpoint of the i th subinterval. If the rectangle with base $[x_{i-1}, x_i]$ and height $f(\bar{x}_i)$ is rotated about the y -axis then the result is a cylindrical shell with average radius \bar{x}_i height $f(\bar{x}_i)$ and thickness Δx so its volume is:

$$V_i = (2\pi)\bar{x}_i[f(\bar{x}_i)]\Delta x$$



Volume Of A Solid Revolution (Cylindrical shells method)

An approximation to the volume of is given by the sum of the volumes of these shells:

$$V \approx \sum_{i=1}^n V_i = \sum_{i=1}^n 2\pi \bar{x}_i [f(\bar{x}_i)] \Delta x$$

This approximation appears to become better as $n \rightarrow \infty$ But, from the definition of an integral, we know that

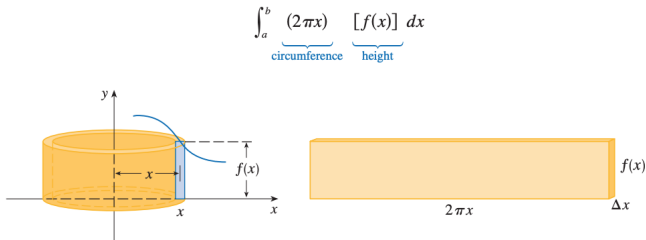
$$\lim_{n \rightarrow \infty} \sum_{i=1}^n 2\pi \bar{x}_i [f(\bar{x}_i)] \Delta x = \int_a^b 2\pi x f(x) dx$$

Volume Of A Solid Revolution (Cylindrical shells method)

The volume of the solid, obtained by rotating about the y -axis the region under the curve $y = f(x)$ from a to b , is

$$V = \int_a^b 2\pi x f(x) dx \quad \text{where } 0 \leq a < b$$

The best way to remember the last Formula is to think of a typical shell, cut and flattened as in Figure with radius x , circumference $2\pi x$, height $f(x)$ and thickness Δx or dx :



$$\int_a^b \underbrace{(2\pi x)}_{\text{circumference}} \underbrace{[f(x)]}_{\text{height}} dx$$

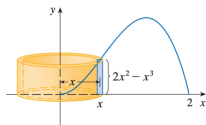
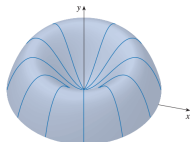
Examples

Example 3.1

Find the volume of the solid obtained by rotating about the y -axis the region bounded by $y = 2x^2 - x^3$ and $y = 0$

by the shell method, the volume is

$$\begin{aligned} V &= \int_0^2 (2\pi x)(2x^2 - x^3) dx = 2\pi \int_0^2 (2x^3 - x^4) dx = 2\pi \left[\frac{x^4}{2} - \frac{x^5}{5} \right]_0^2 \\ &= 2\pi \left(8 - \frac{32}{5} \right) = \frac{16}{5}\pi \end{aligned}$$

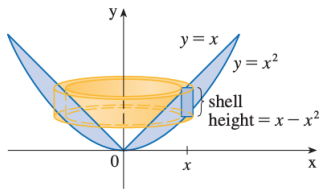


Examples

Example 3.2

Find the volume of the solid obtained by rotating about the y -axis the region between $y = x$ and $y = x^2$.

$$\begin{aligned} V &= \int_0^1 (2\pi x)(x - x^2) dx \\ &= 2\pi \int_0^1 (x^2 - x^3) dx \\ &= 2\pi \left[\frac{x^3}{3} - \frac{x^4}{4} \right]_0^1 = \frac{\pi}{6} \end{aligned}$$



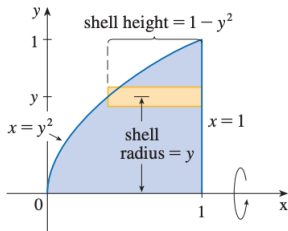
Examples

Example 3.3

Use cylindrical shells to find the volume of the solid obtained by rotating about the x -axis the region under the curve $y = \sqrt{x}$ from 0 to 1.

For rotation about the x -axis we see that a typical shell has radius y , circumference $2\pi y$, and height $1 - y^2$. So the volume is

$$\begin{aligned} V &= \int_0^1 (2\pi y)(1 - y^2) dy \\ &= 2\pi \int_0^1 (y - y^3) dy \\ &= 2\pi \left[\frac{y^2}{2} - \frac{y^4}{4} \right]_0^1 = \frac{\pi}{2} \end{aligned}$$



Examples

Example 3.4

Find the volume of the solid obtained by rotating the region bounded by $y = x - x^2$ and $y = 0$ about the line $x = 2$.

the region and a cylindrical shell formed by rotation about the line $x = 2$. It has radius $2 - x$, circumference $2\pi(2 - x)$, and height $x - x^2$.

$$\begin{aligned} V &= \int_0^1 2\pi(2 - x)(x - x^2) dx = 2\pi \int_0^1 (x^3 - 3x^2 + 2x) dx \\ &= 2\pi \left[\frac{x^4}{4} - x^3 + x^2 \right]_0^1 = \frac{\pi}{2} \end{aligned}$$

