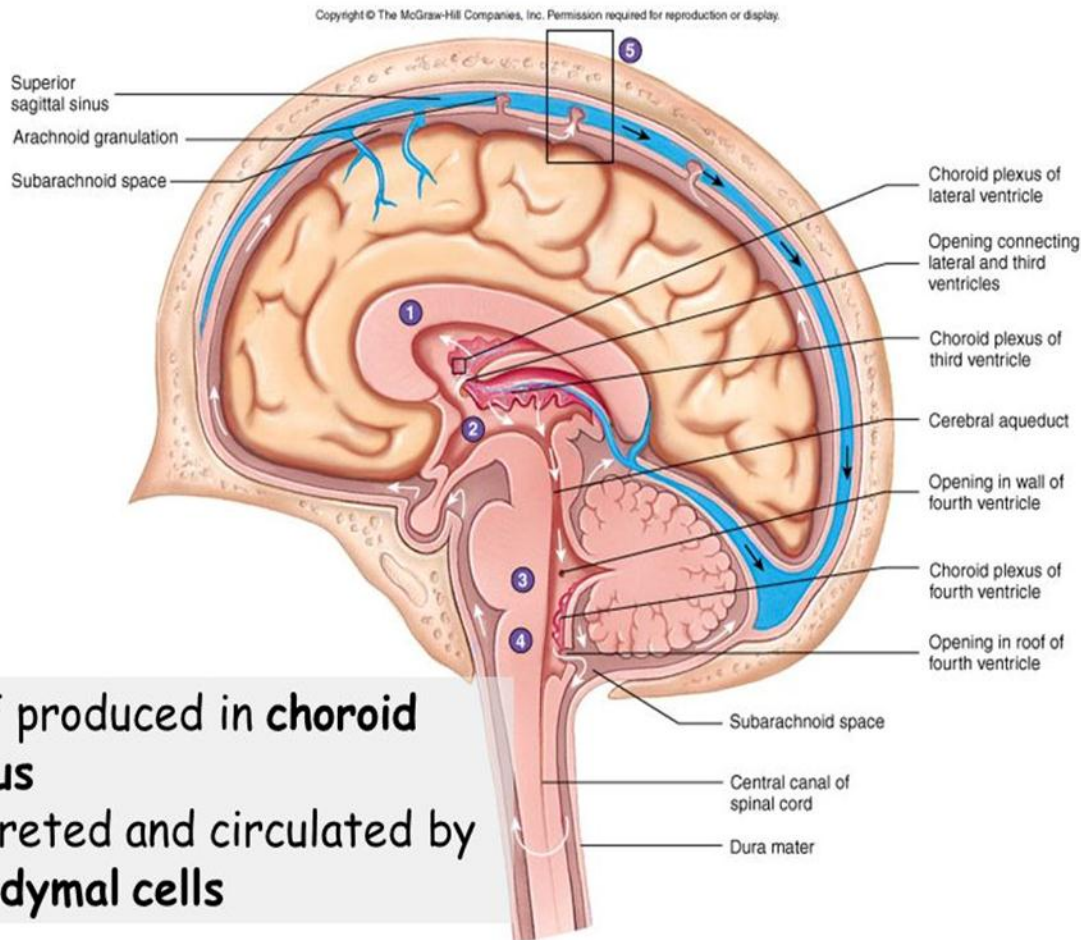


CENTRAL NERVOUS SYSTEM INFECTIONS

And other miscellaneous infections

ROUTES OF INFECTION



- CSF produced in **choroid plexus**
- Secreted and circulated by **ependymal cells**

DISEASES OF CNS

- Meningitis

- Purulent meningitis

- Acute

- Aseptic meningitis

- Encephalitis/ meningoencephalitis

- viral

- Brain abscess

LABORATORY DIAGNOSIS

◉ Meningitis

- Specimen collection and transport
- Initial processing
- CSF laboratory results
- Visual detection
- Direct detection
- Other tests
- Culture

<http://www.cdc.gov/meningitis/lab-manual/>



EYES, EARS, AND SINUSES INFECTIONS

EYES INFECTIONS

MICROBIAL FLORA

- ◉ *S. epidermidis*
- ◉ *Lactobacillus* spp

DISEASES

- ◉ Conjunctivitis
- ◉ Keratitis

LABORATORY DIAGNOSIS

- ◉ Specimen collection and transport
- ◉ Direct visual examination
- ◉ Culture
- ◉ Non-culture methods



EYES, EARS, AND SINUSES INFECTIONS

EARS INFECTIONS

MICROBIAL FLORA

- ◉ *S. pneumoniae, propionobacterium acnes*
- ◉ *S. aureus*
- ◉ *Candida spp*

DISEASES

- ◉ Otitis Externa
- ◉ Otitis media

LABORATORY DIAGNOSIS

- ◉ Specimen collection and transport
 - Benzalkonium chloride
- ◉ Direct visual examination
- ◉ Culture and Non-culture methods



EYES, EARS, AND SINUSES INFECTIONS

SINUES INFECTIONS

DISEASES

- ◉ Sinusitis

DIAGNOSIS

SKIN, SOFT TISSUES AND WOUND INFECTIONS

INFECTION OF THE SKIN

- Normal flora
- Skin and soft tissue infections
- Wound infection
 - Postoperative
 - Bites
 - Burns

LABORATORY DIAGNOSIS

Infections of epidermis and dermis

- Erysipelas and cellulitis
- Pustule
- Vesicles and bullae

Wound infections

- Postoperative
- Bites
- Burns