

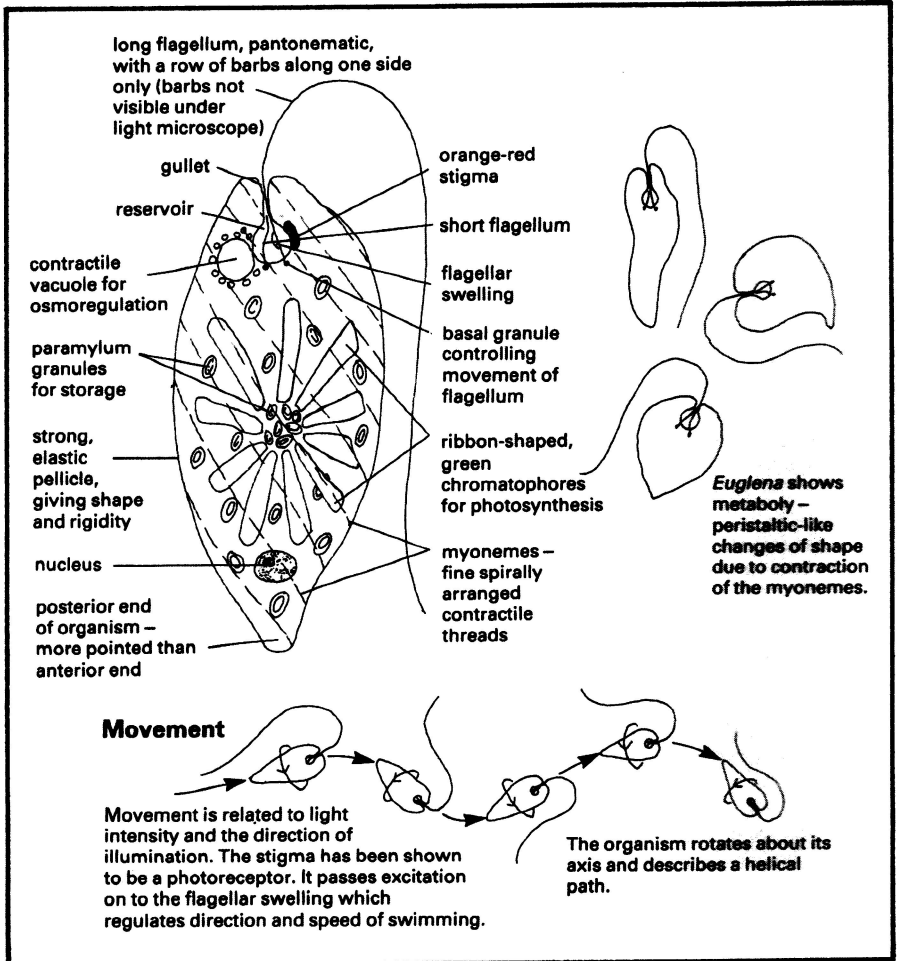
Euglena viridis

DIVISION EUGLENOPHYTA

CLASS EUGLENOPHYCEAE

ORDER EUGLENALES

GENUS *Euglena*



Euglena viridis is often found in puddles, ponds, ditches or stagnant water generally, flourishing where there is plenty of organic matter. Other species of *Euglena* are epiphytic and epipelic, and can cause problems in lakes and reservoirs. When conditions are favourable for growth, rapid reproduction occurs, forming 'blooms' which can clog up water-filtering apparatus.

The genus *Euglena* is remarkable in that many of the pigmented species can live in the dark, if they are provided with a source of energy to compensate for lack of light. Most of these species will retain their chlorophyll under these circumstances, but some become colourless. Photosynthetic species cannot use nitrates as a source of nitrogen, but must have either ammonium salts or organic nitrogen in order to synthesize proteins.