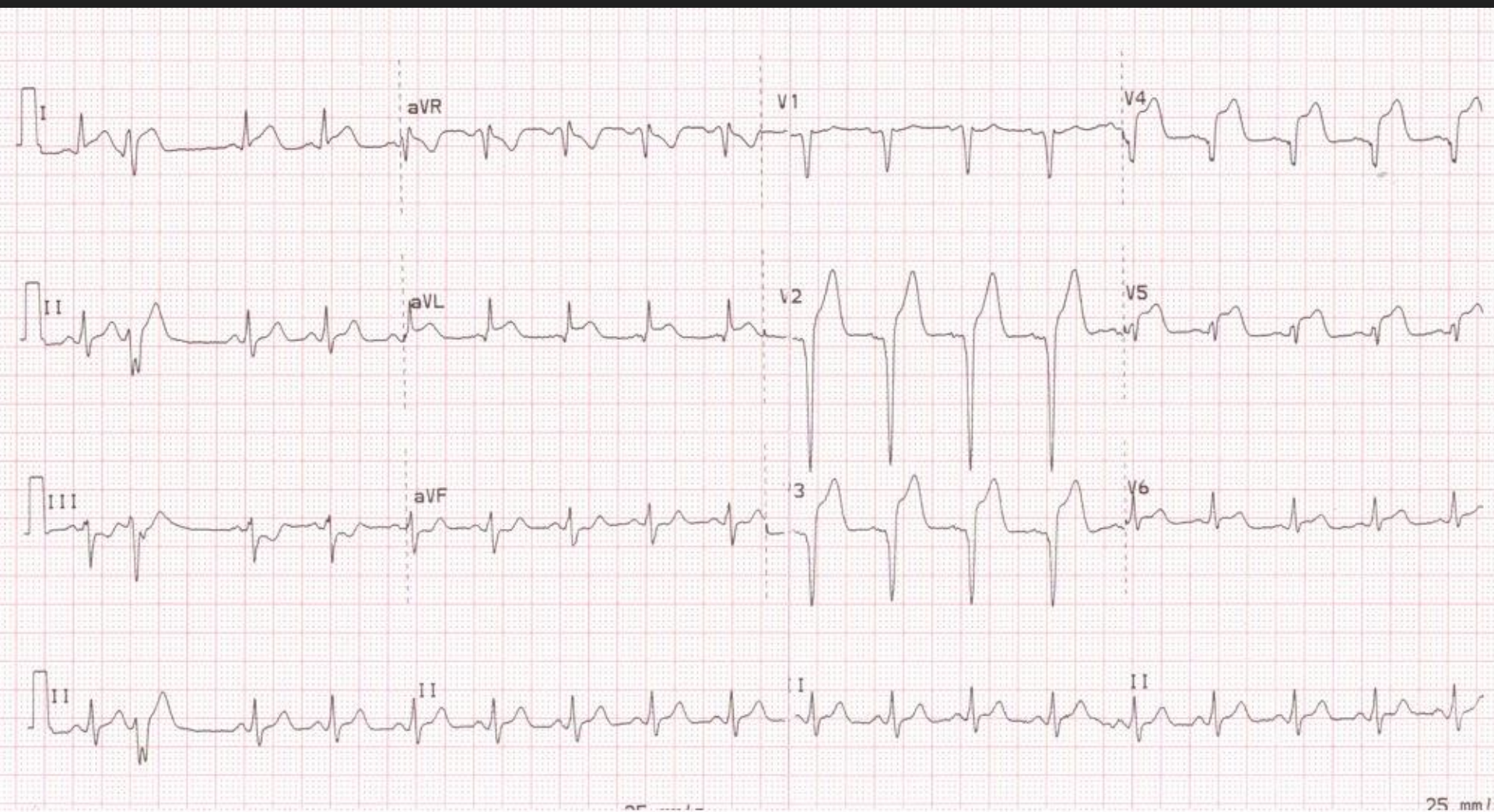


# CHALLENGING EMERGENCY ECGs

**Dr. Tawfiq Almezeiny**

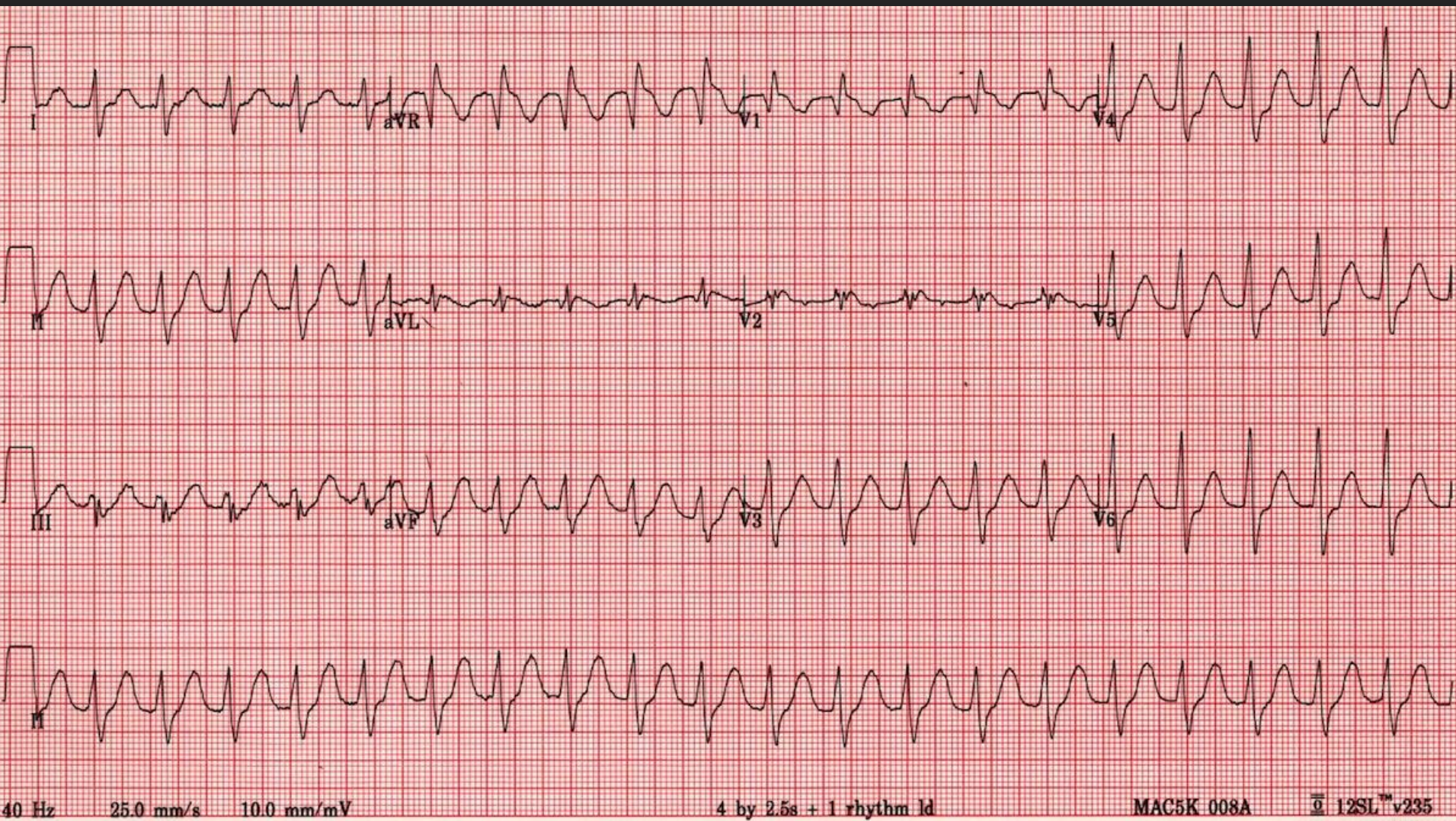
**MBBS FRCPC (CCM)**

---



1



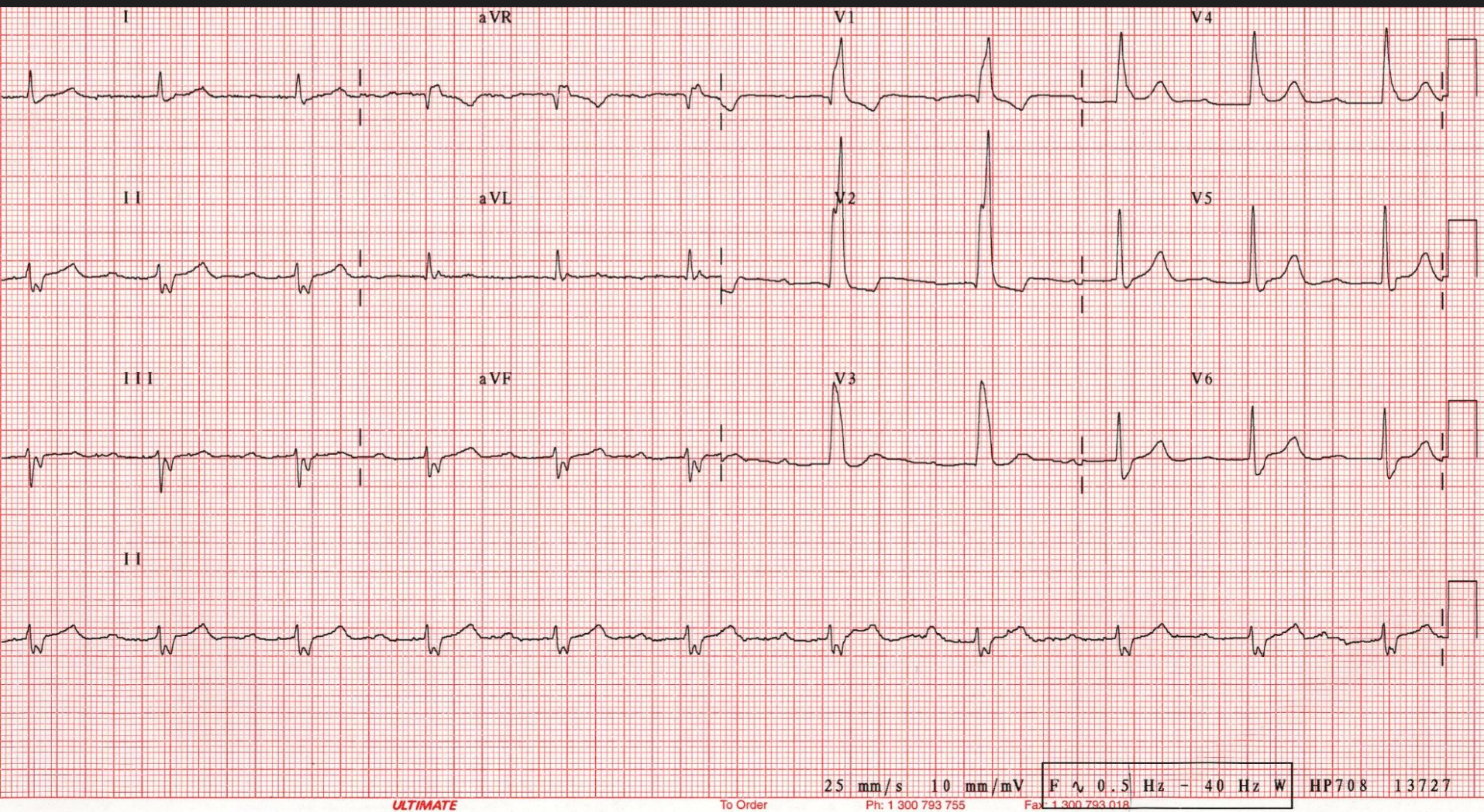


2

BP 75/40

GCS 8/15





Na 141 K 1.1 Cl 116 GI 5.4  
PH 7.25 PaCO<sub>2</sub> 35 HCO<sub>3</sub> 15 PO<sub>2</sub> 234



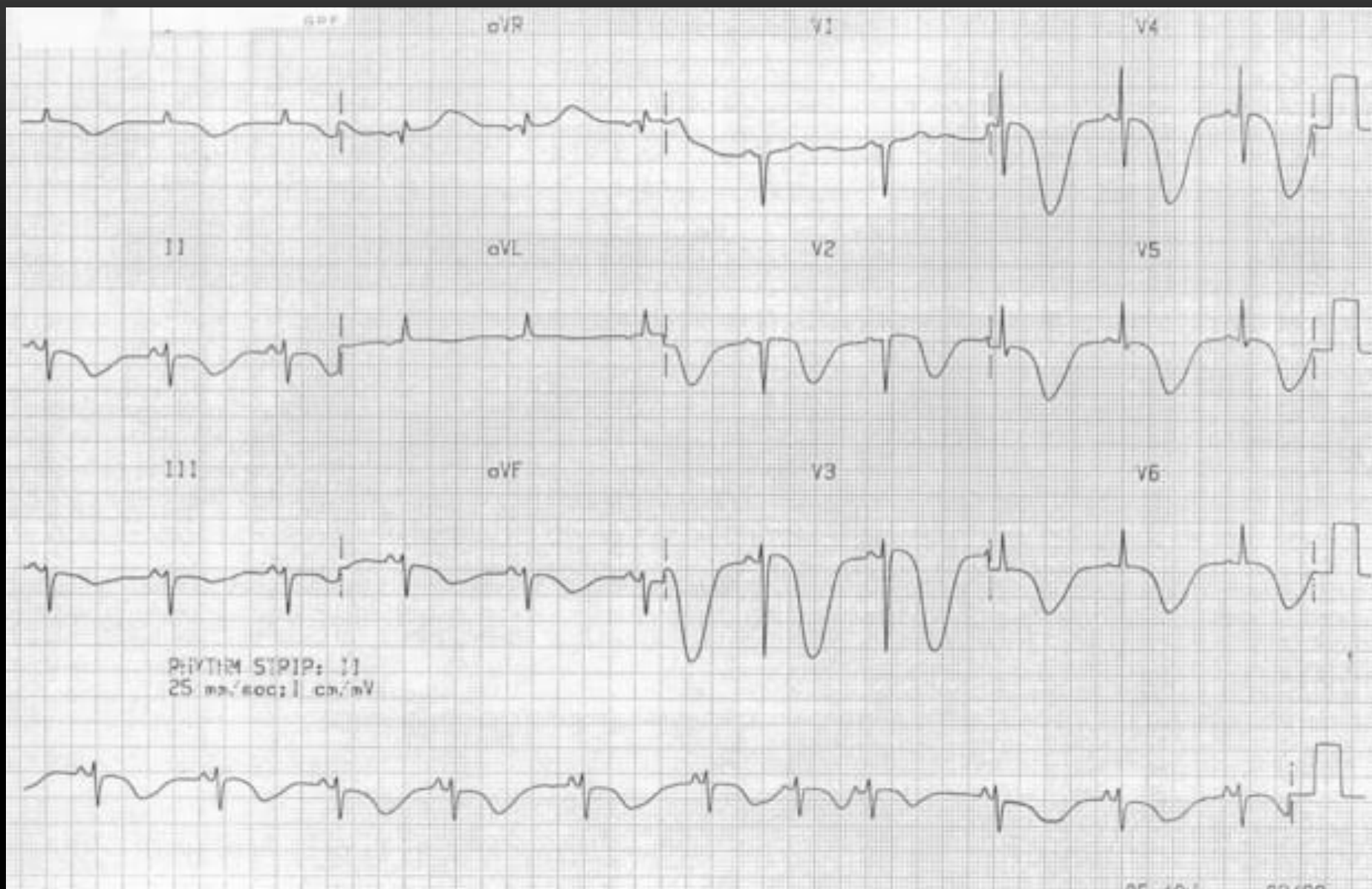
4

BP 90/50

HR 75/min

T 37.1° C





5

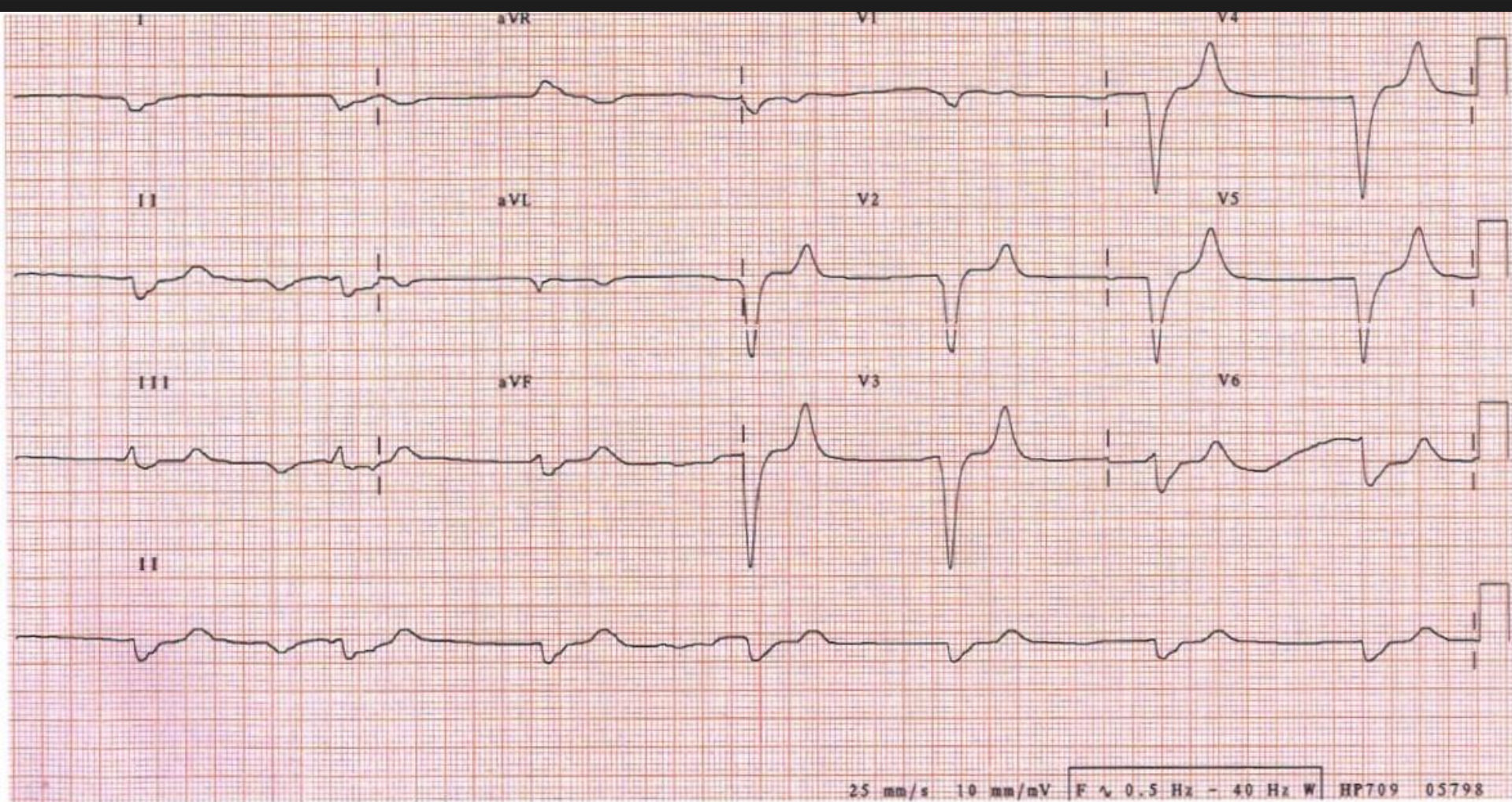
BP 184/98

HR 66/min

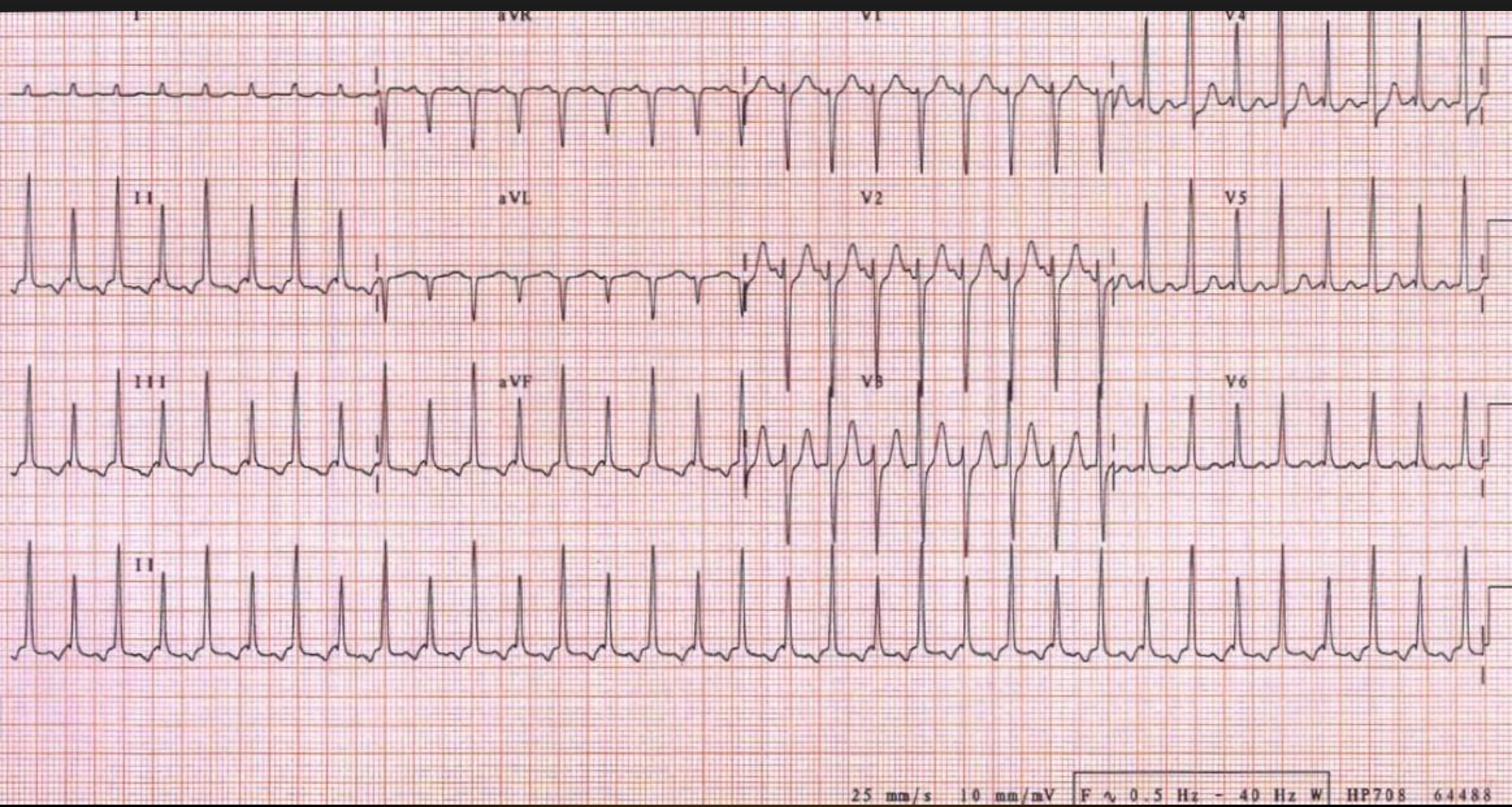
T 37.4° C

RR 28/min

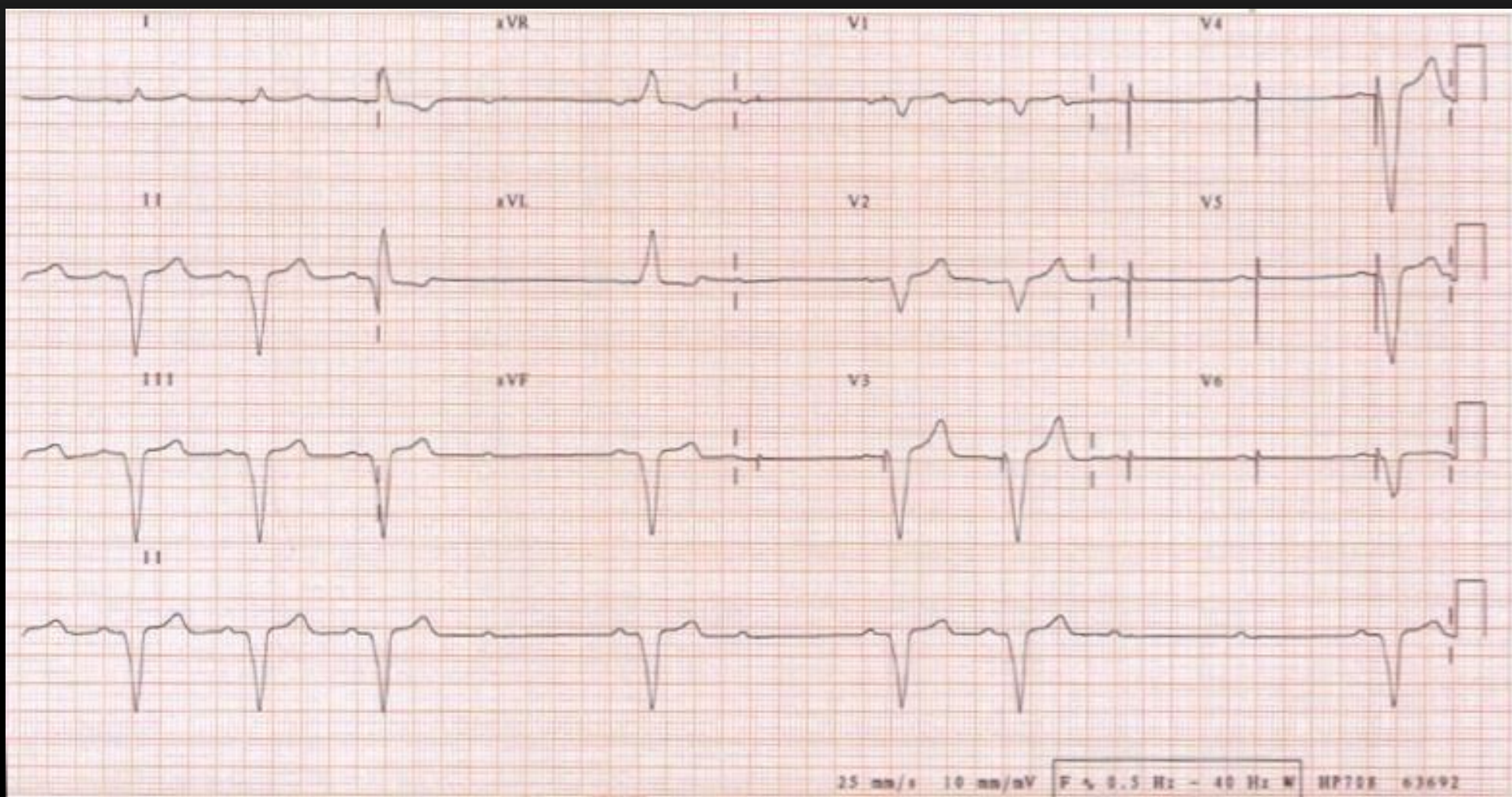




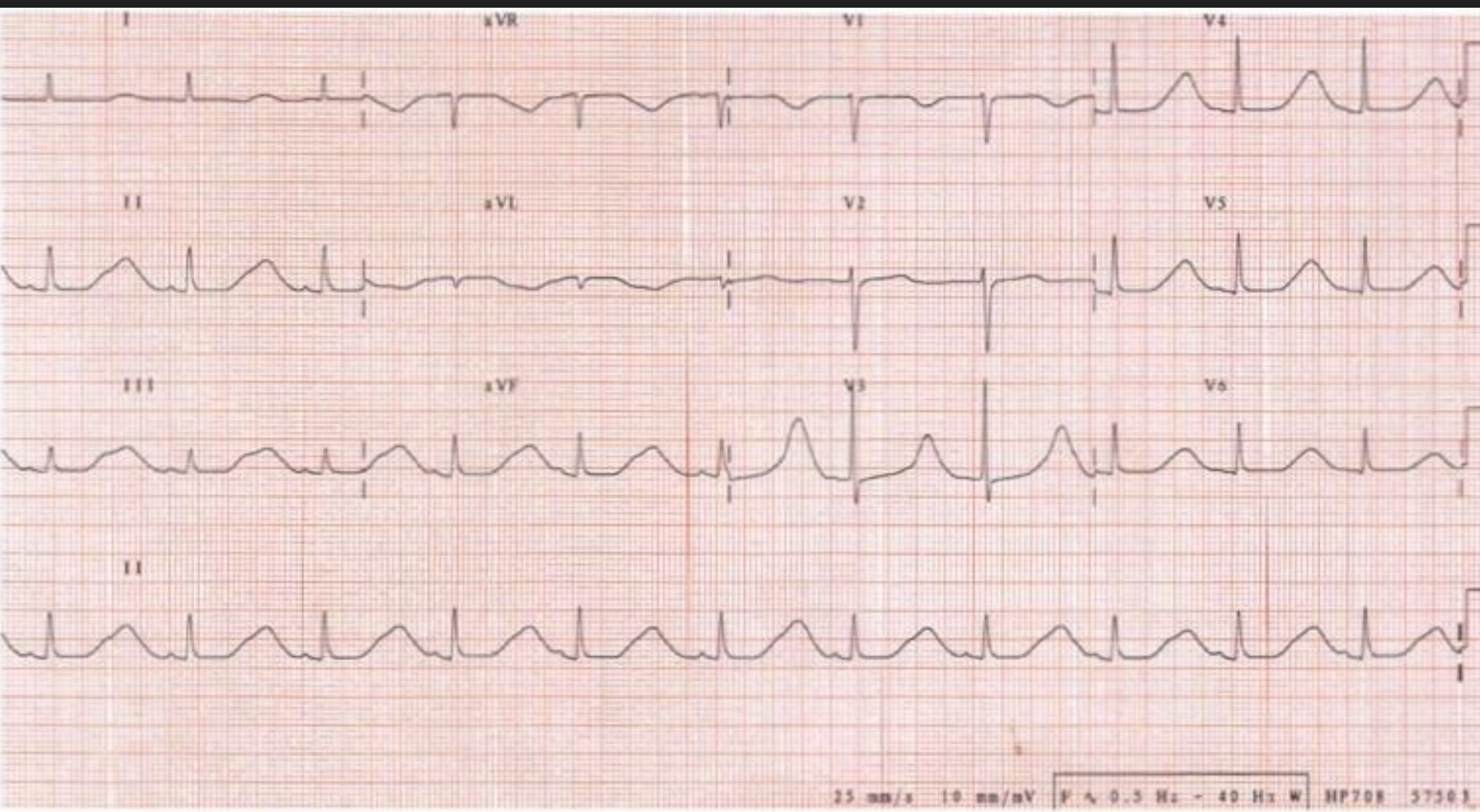




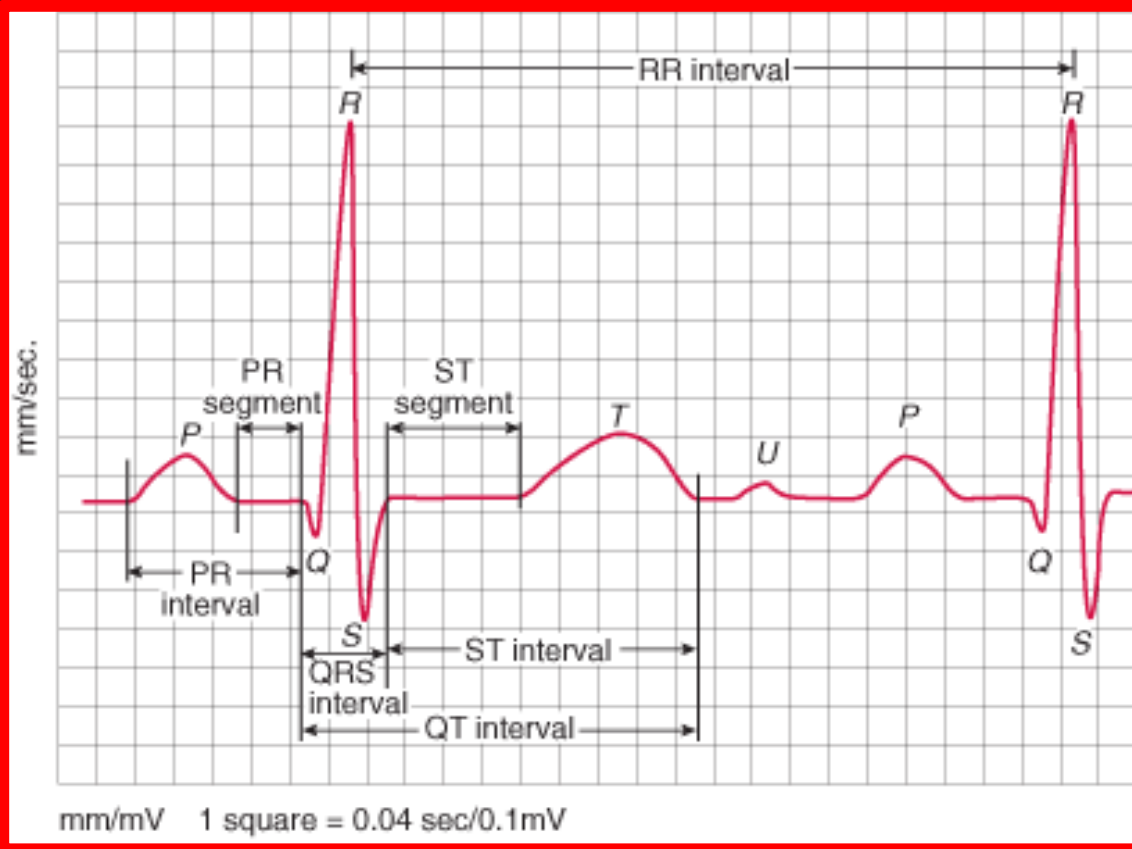












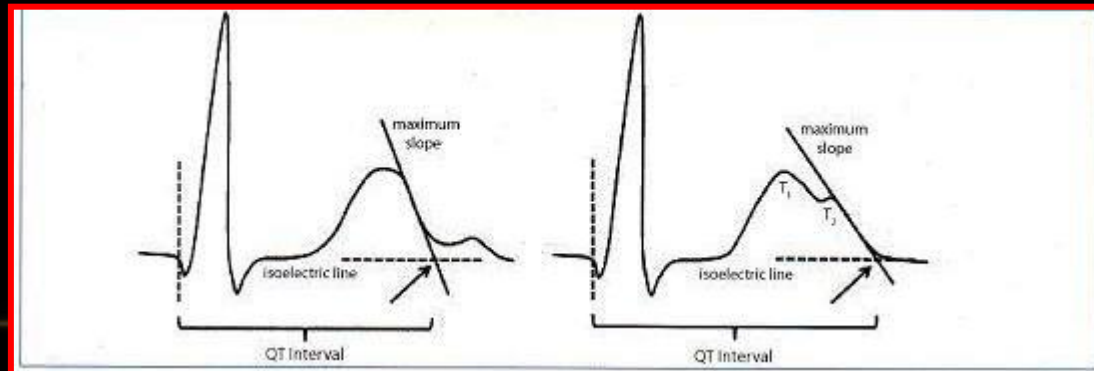


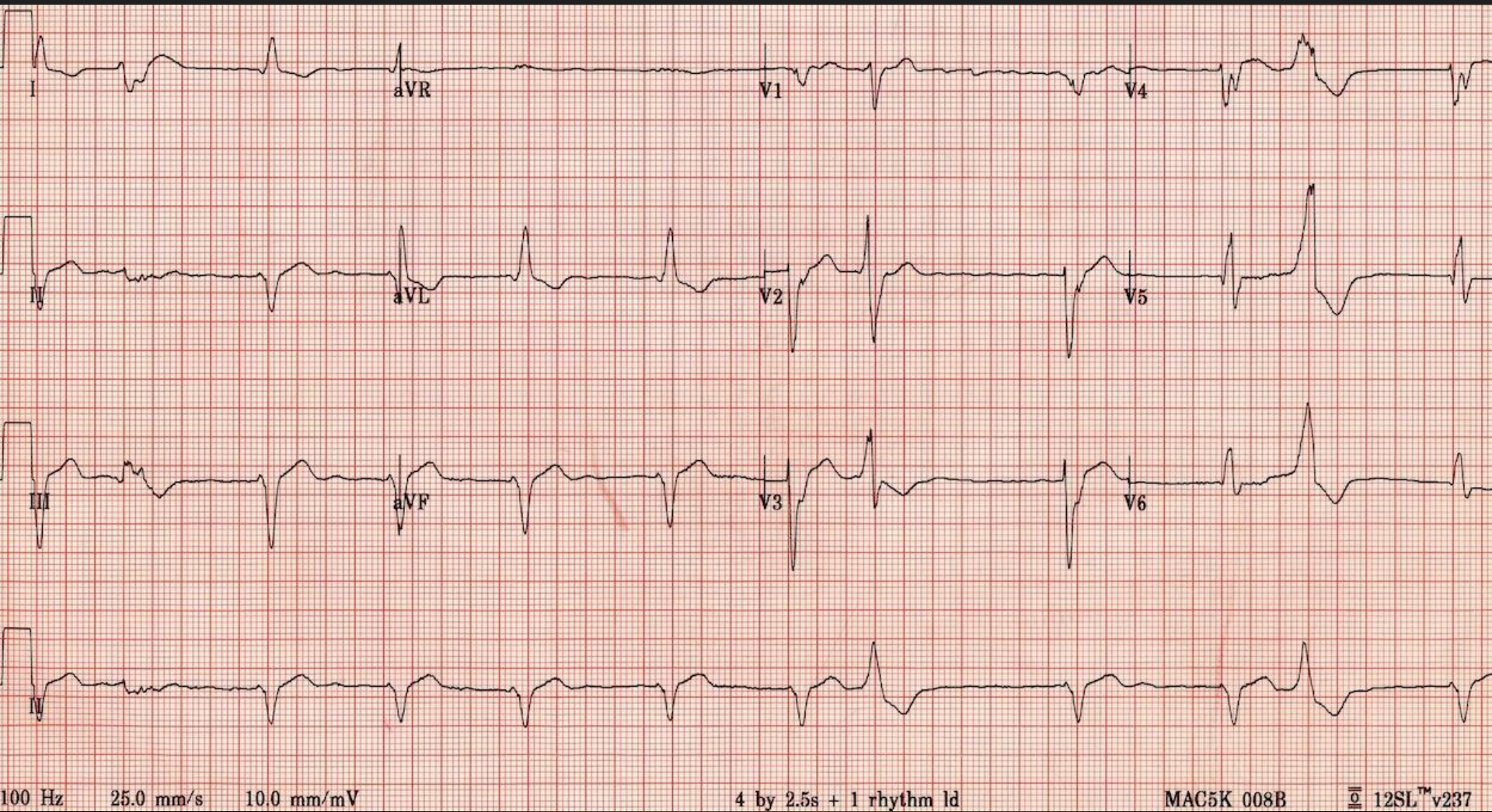
**Bazett's formula:  $QT_c = QT / \sqrt{RR}$**

**Fredericia's formula:  $QT_c = QT / RR^{1/3}$**

**Framingham formula:  $QT_c = QT + 0.154 (1 - RR)$**

**Hodges formula:  $QT_c = QT + 1.75 (\text{heart rate} - 60)$**



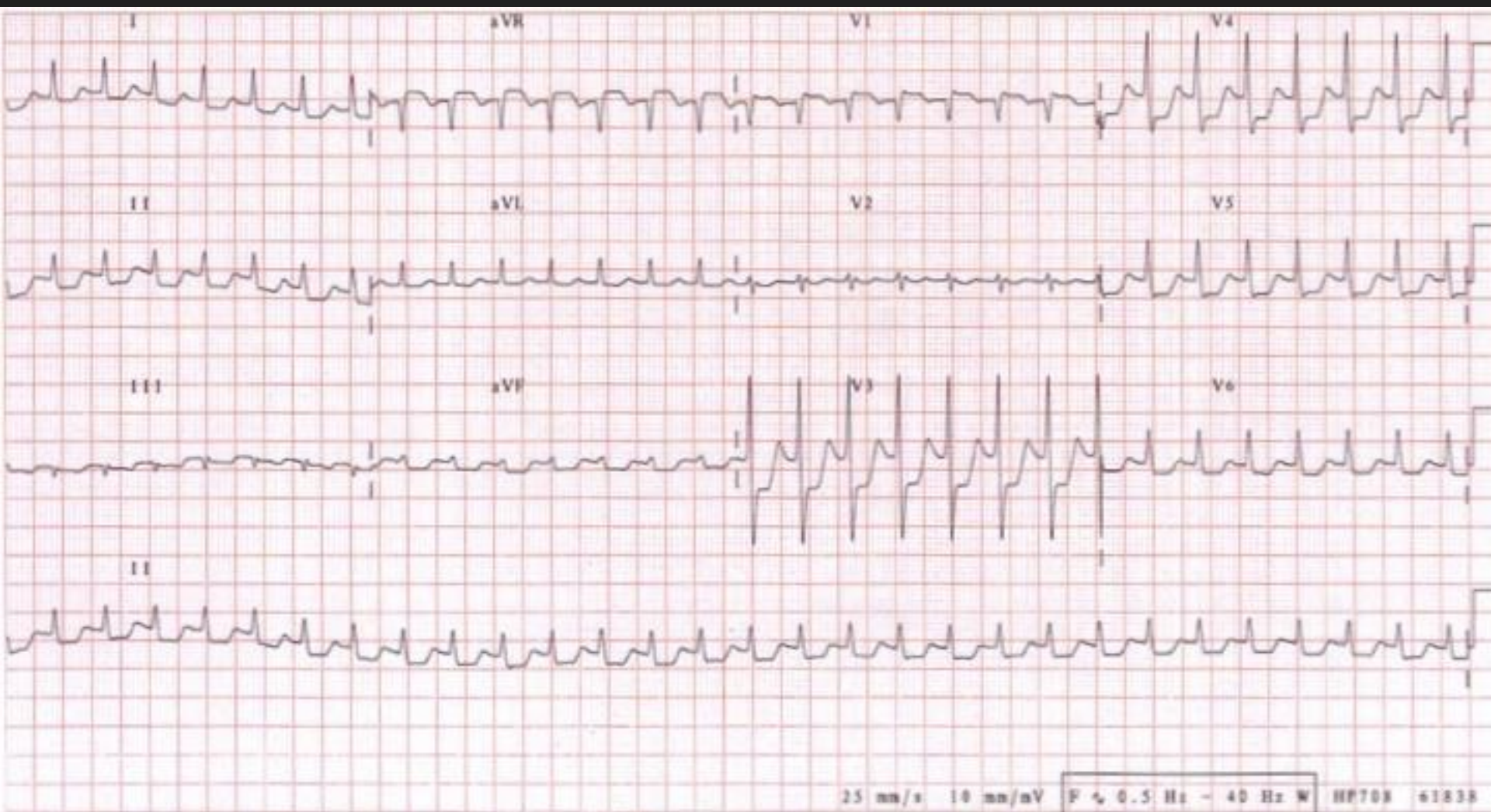


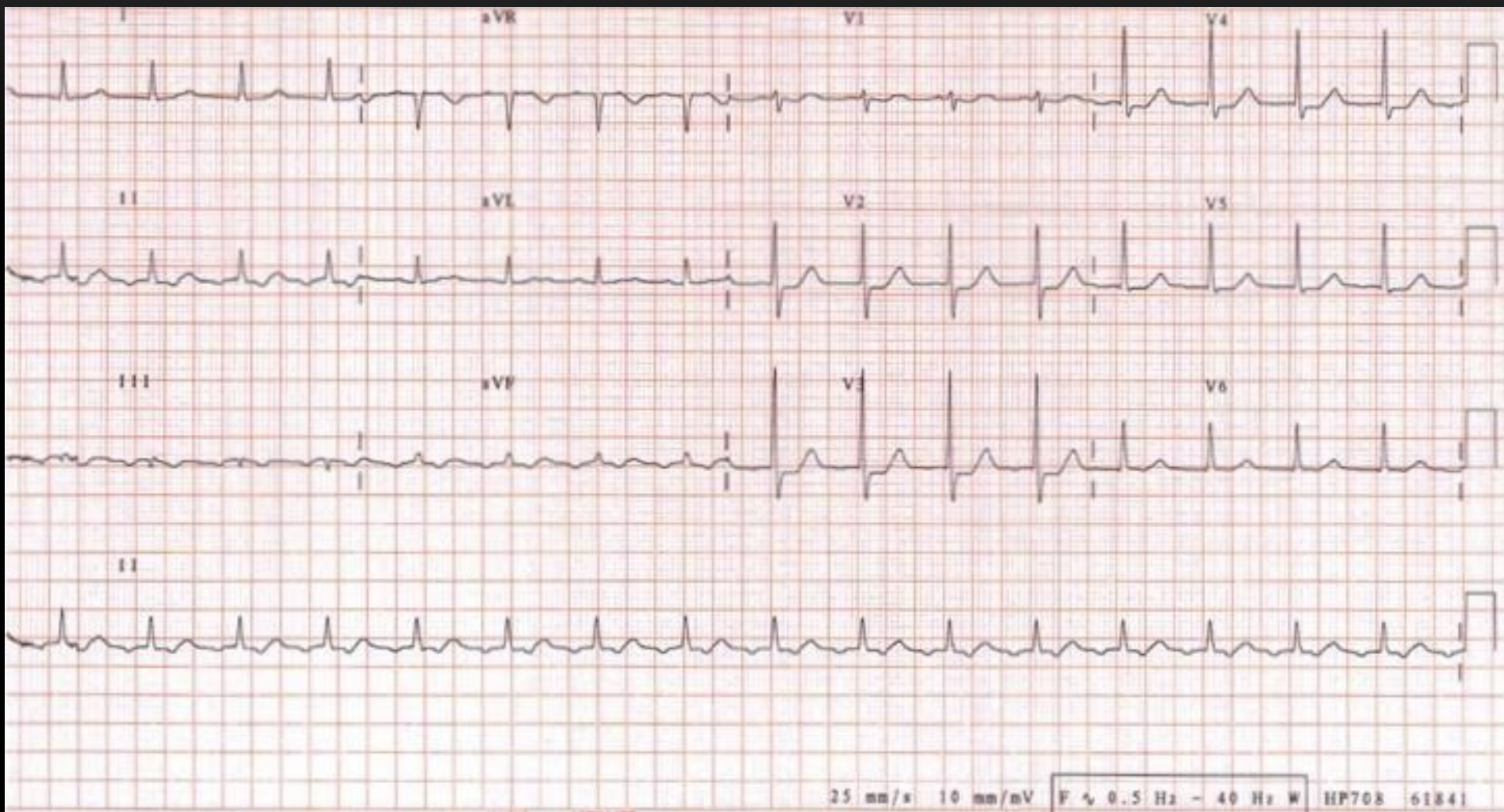
10

BP 90/70

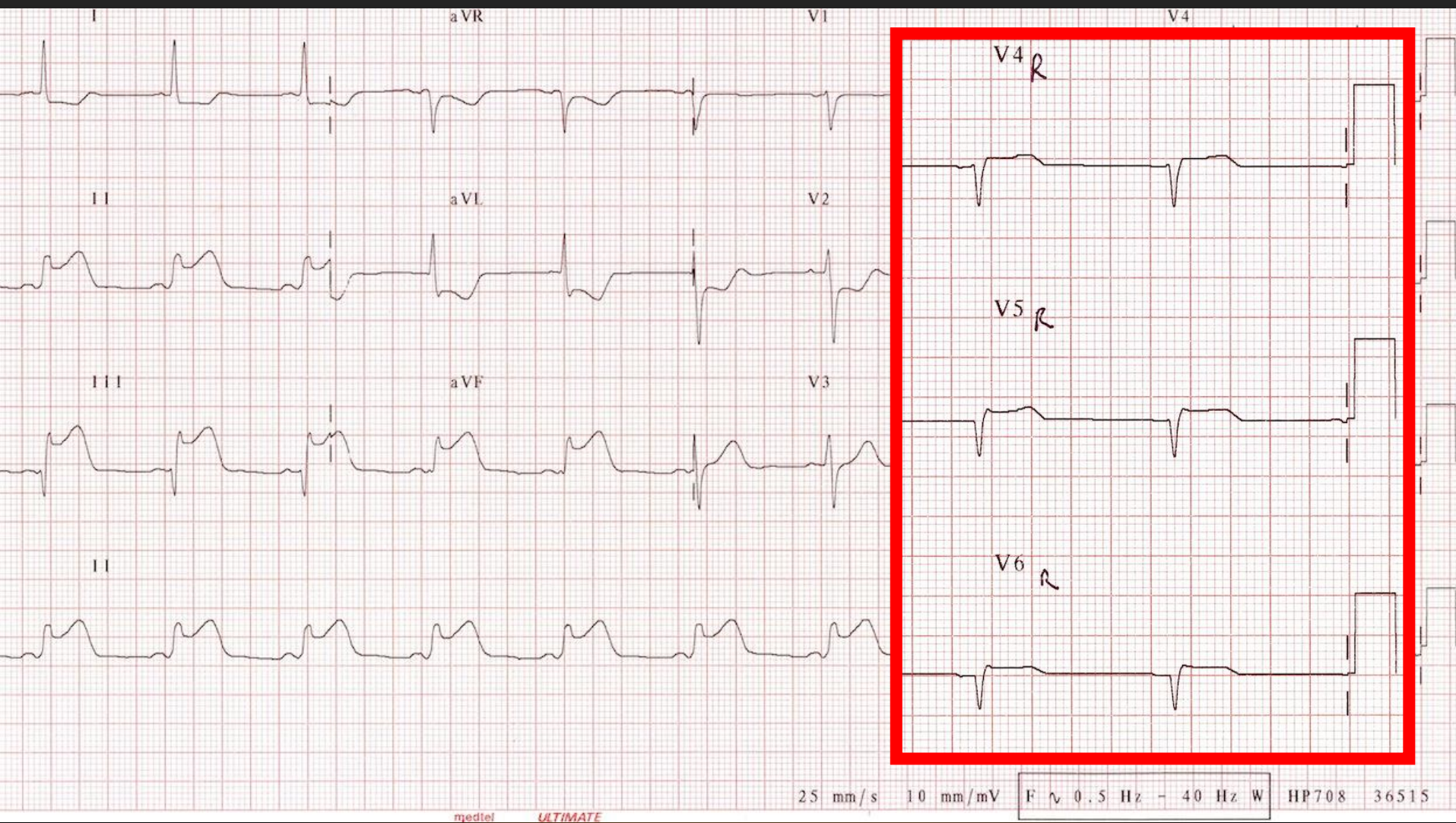
O2 Sat 95% (RA)









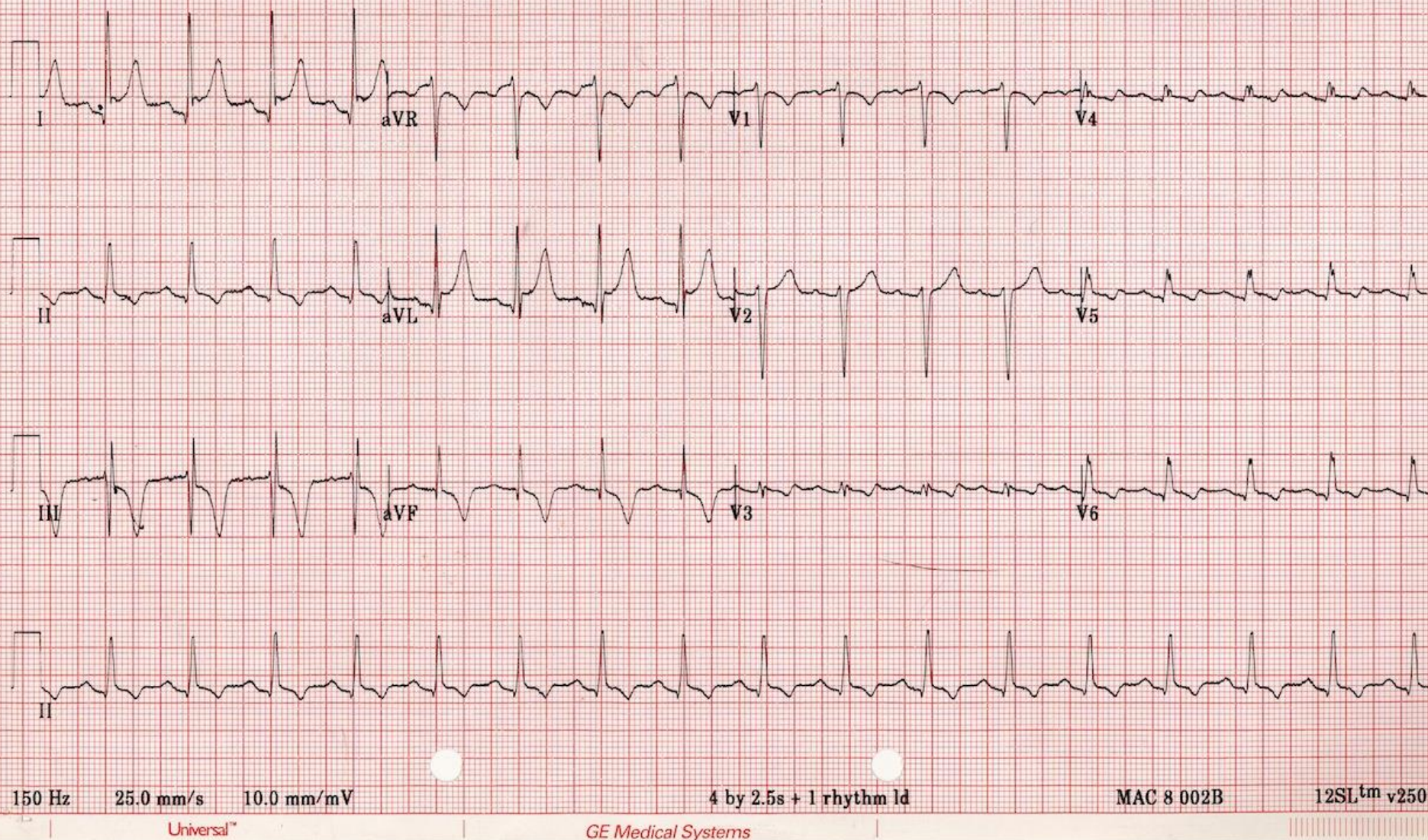


12

BP 80/60

O<sub>2</sub> Sat 97% (RA)



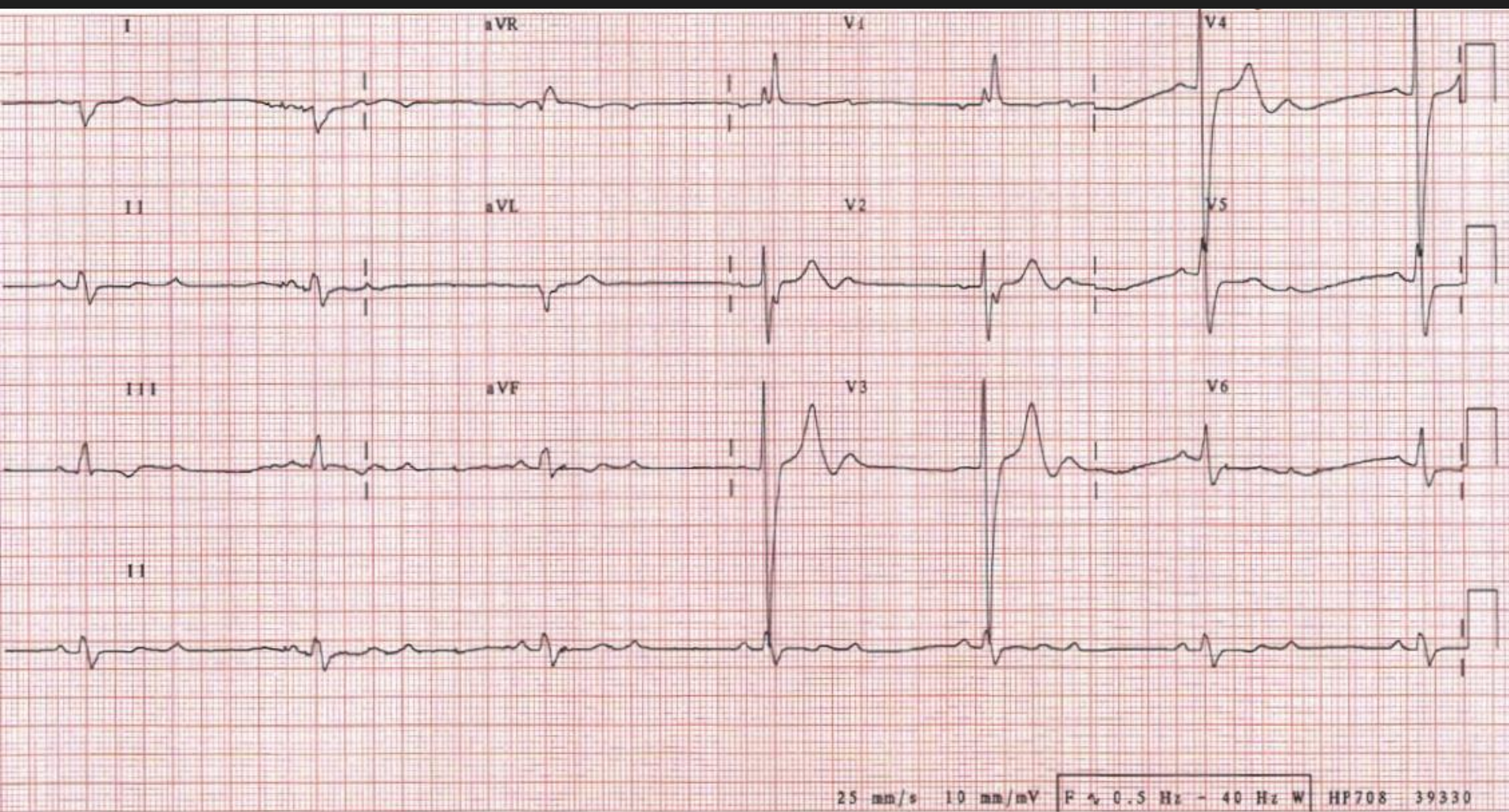


13

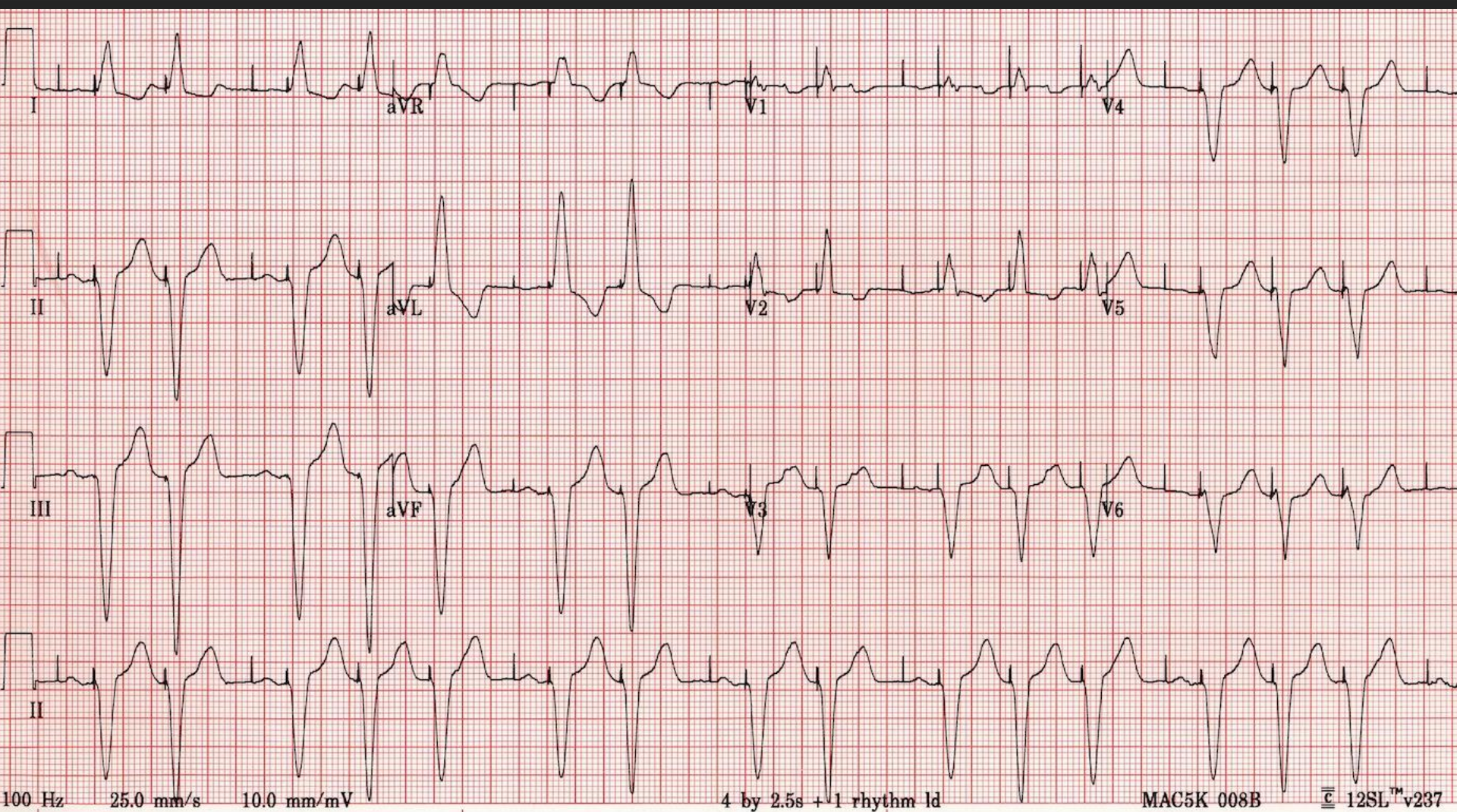
BP 110/70

O<sub>2</sub> Sat 97% (RA)









15

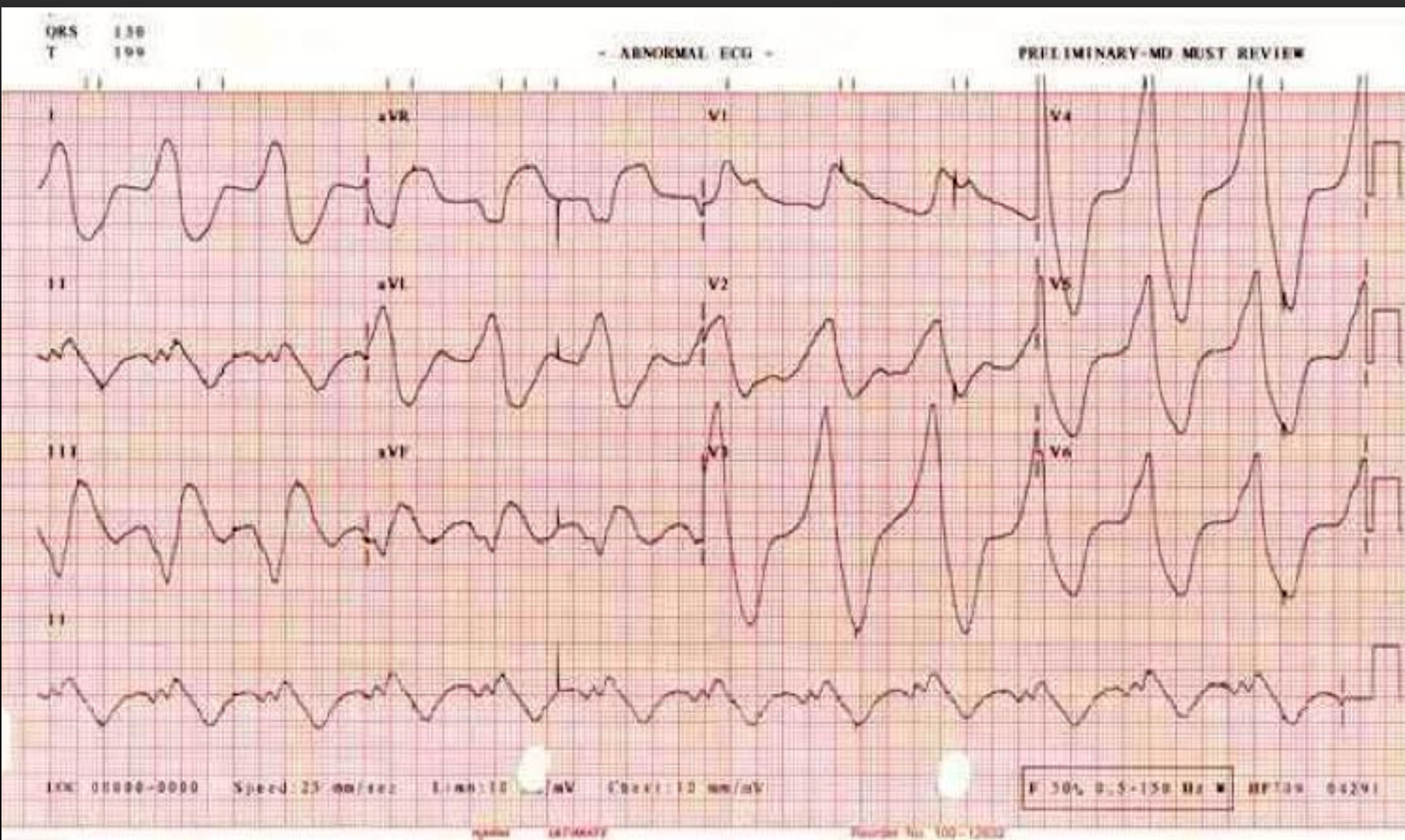
BP 95/60

HR 96/min

T 37° C

O<sub>2</sub> Sat 89% (RA)





16

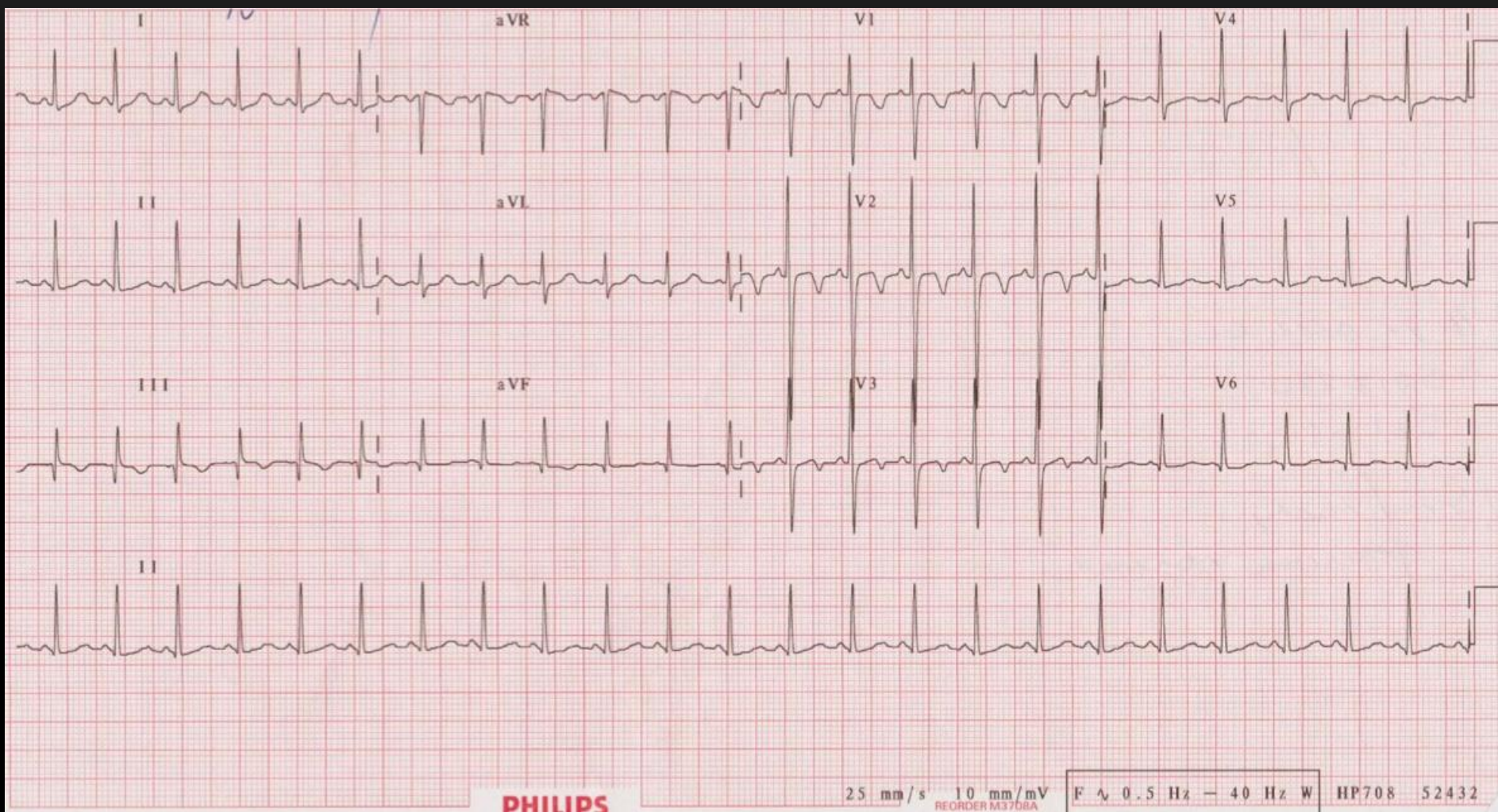
BP 95/60 mmHg

T 36° C

O2 Sat 95% (RA)

GCS 11/15 (E3V3M5)





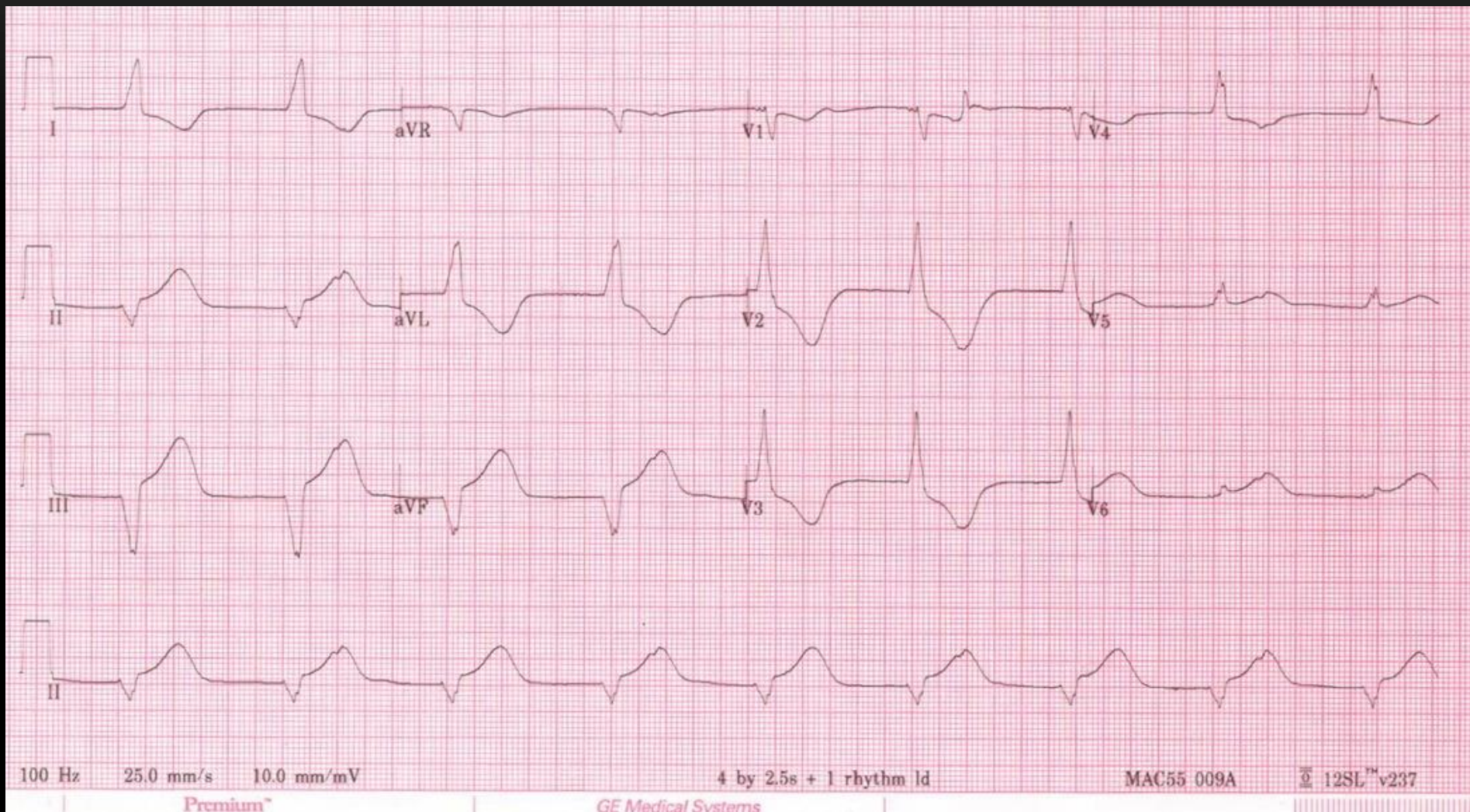
17

BP 90/60 mmHg

T 37° C

RR 20/min





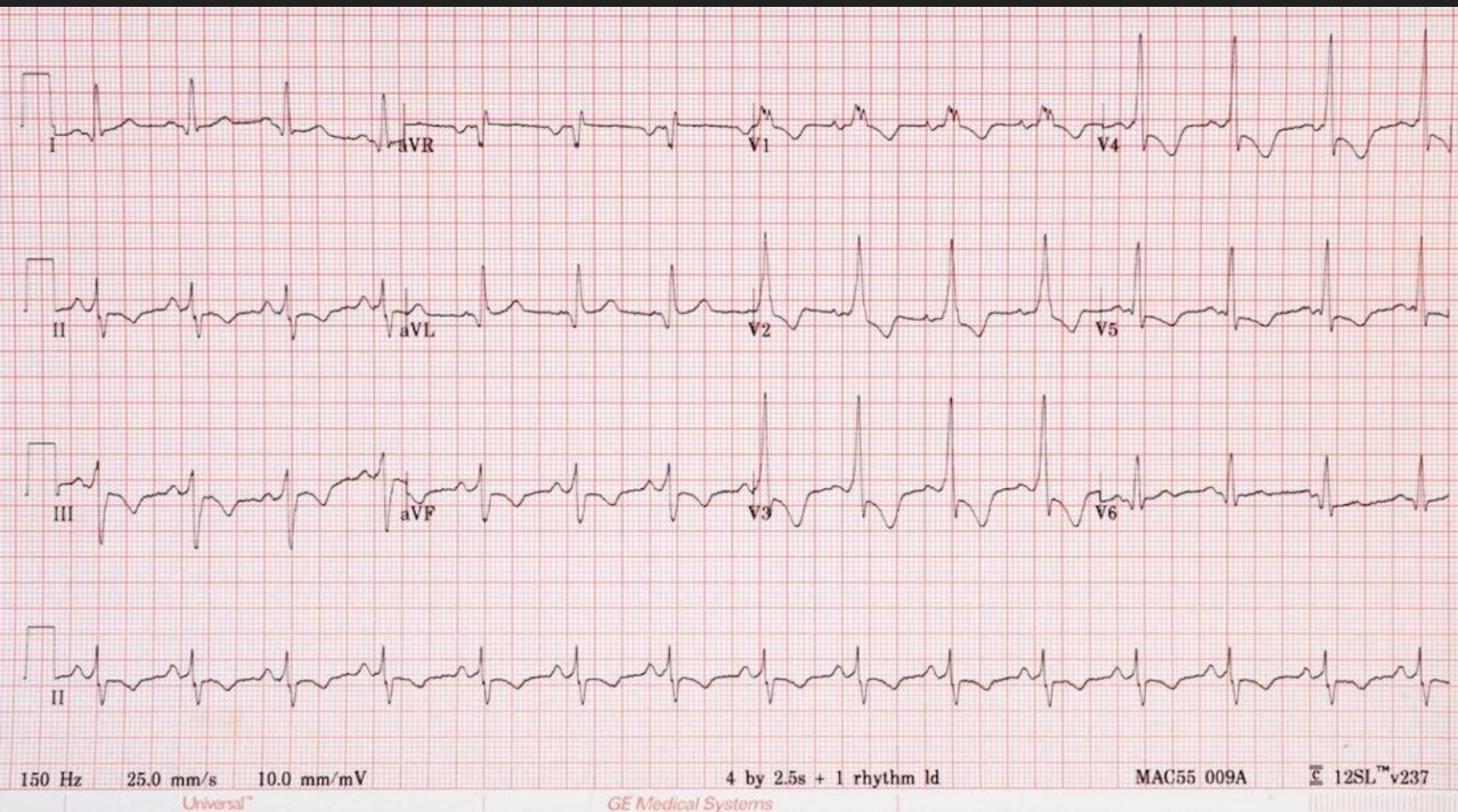
18

BP 150/80 mmHg

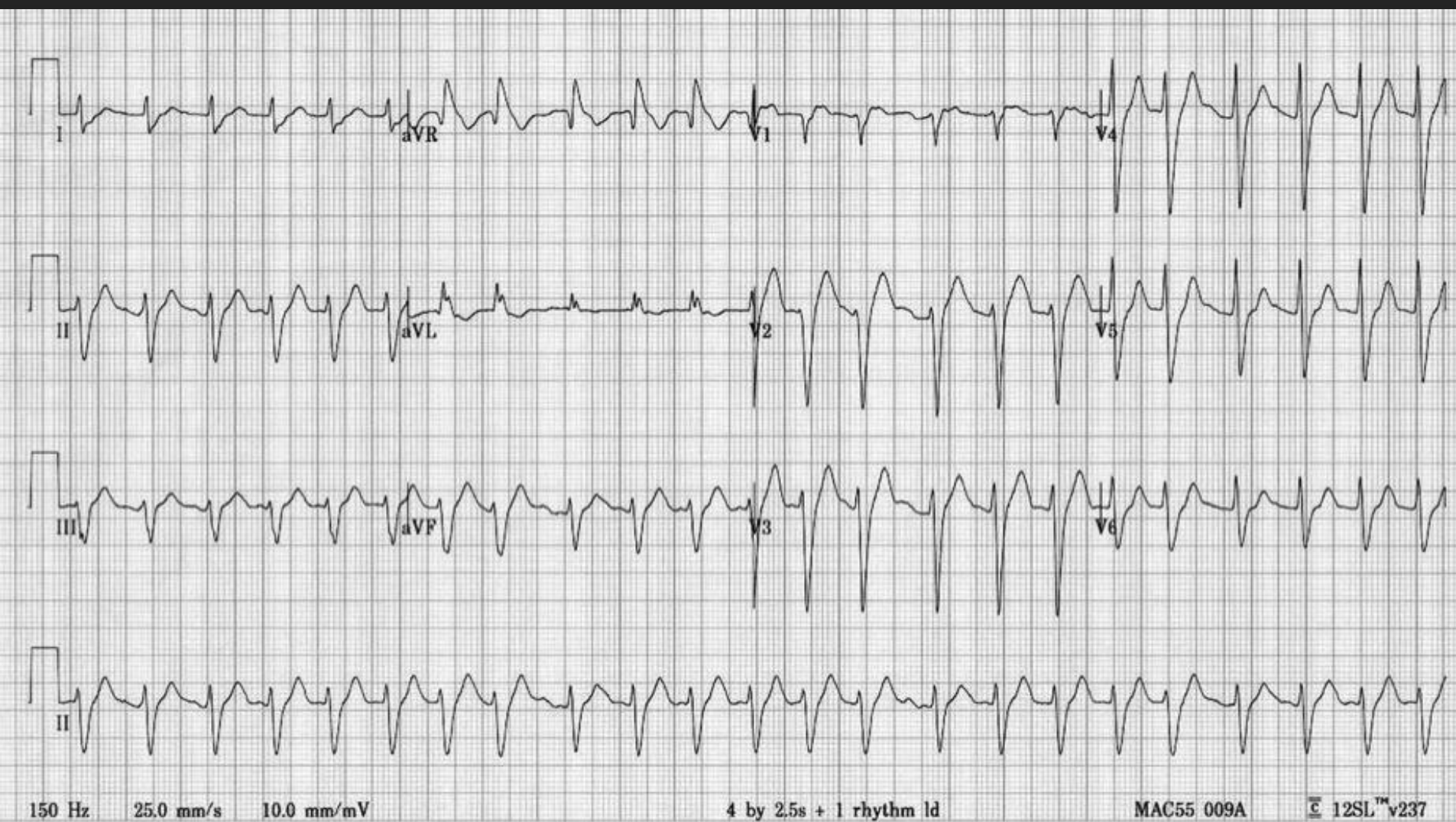
T 36° C

O<sub>2</sub> Sat 98% (RA)









20

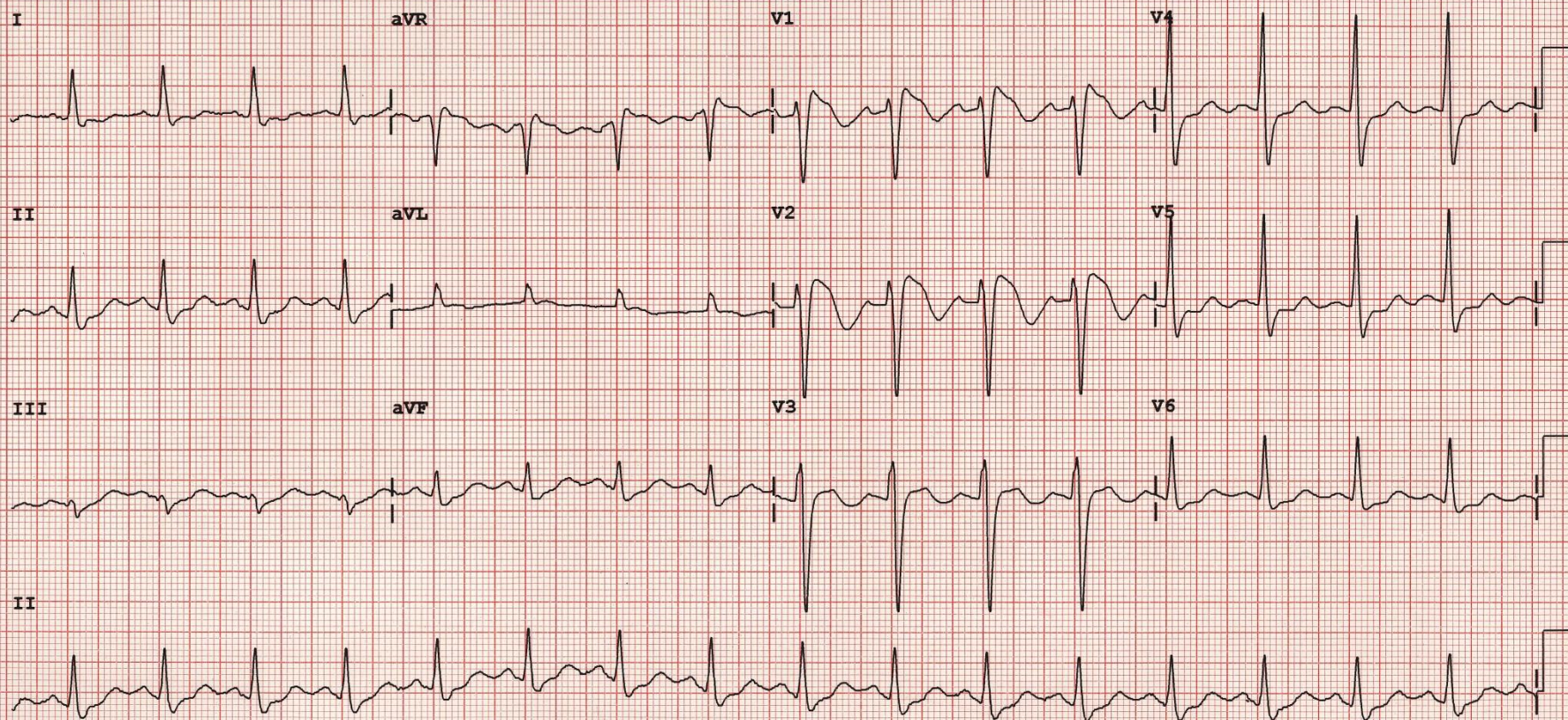
BP 85/60 mmHg

T 37° C

O<sub>2</sub> Sat 100% (8L/min O<sub>2</sub>)

GCS 12/15





Dev: Speed: 25 mm/sec Limb: 10 /mV Chest: 10 mm/mV

F 50~ 0.15-150 Hz

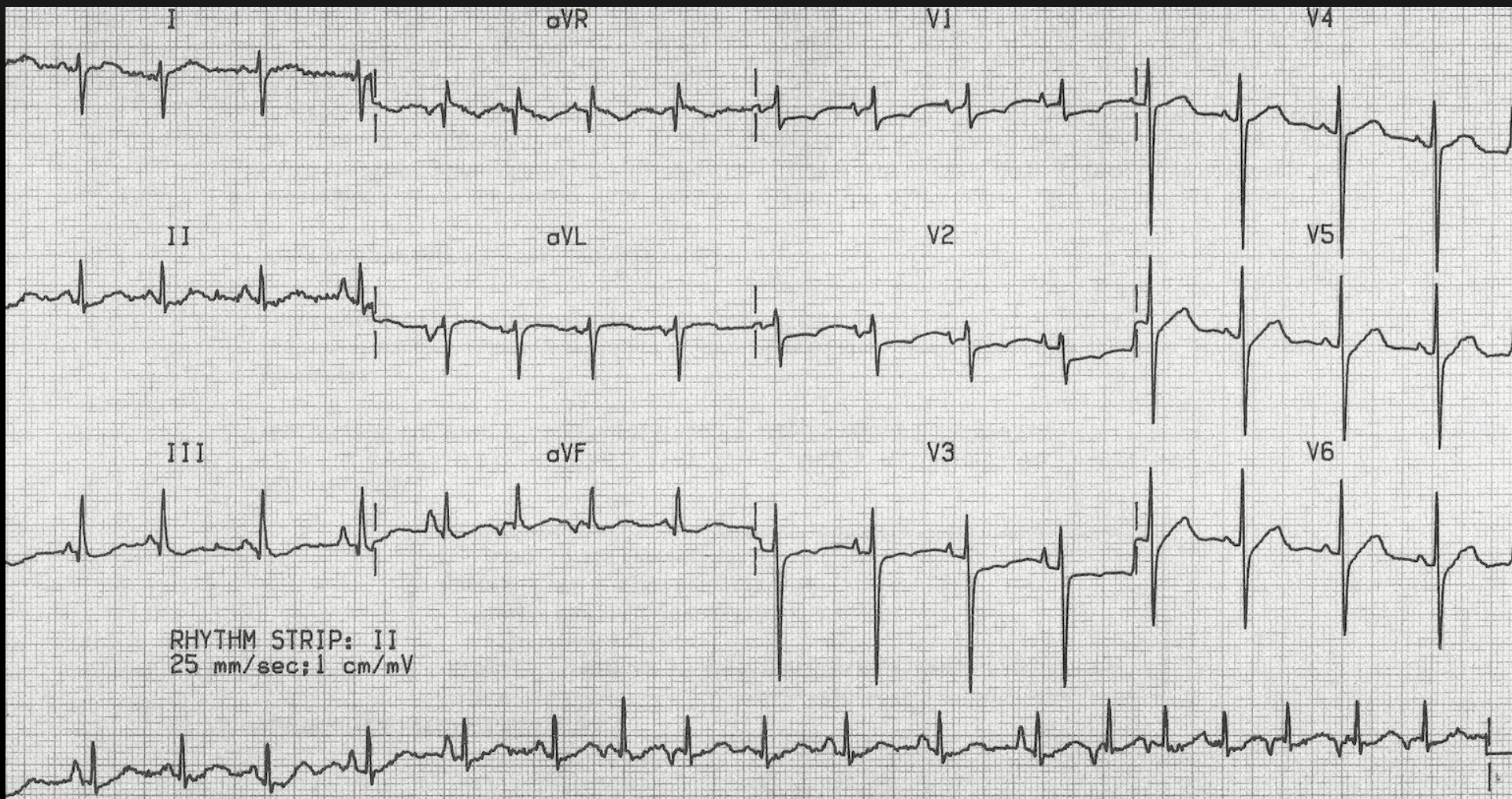
PH08

P?

medtel ULTIMATE

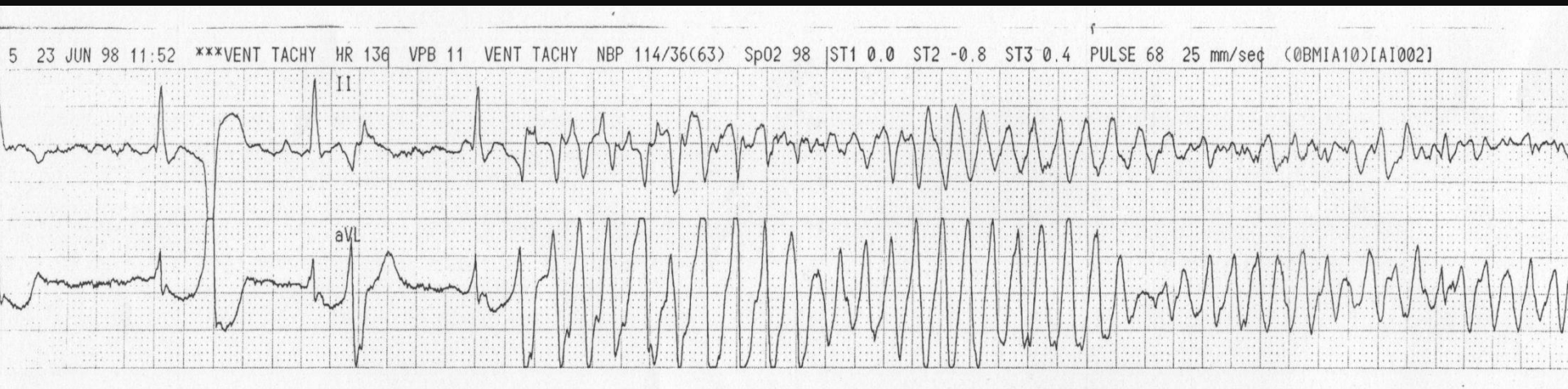


# QUIZ ?



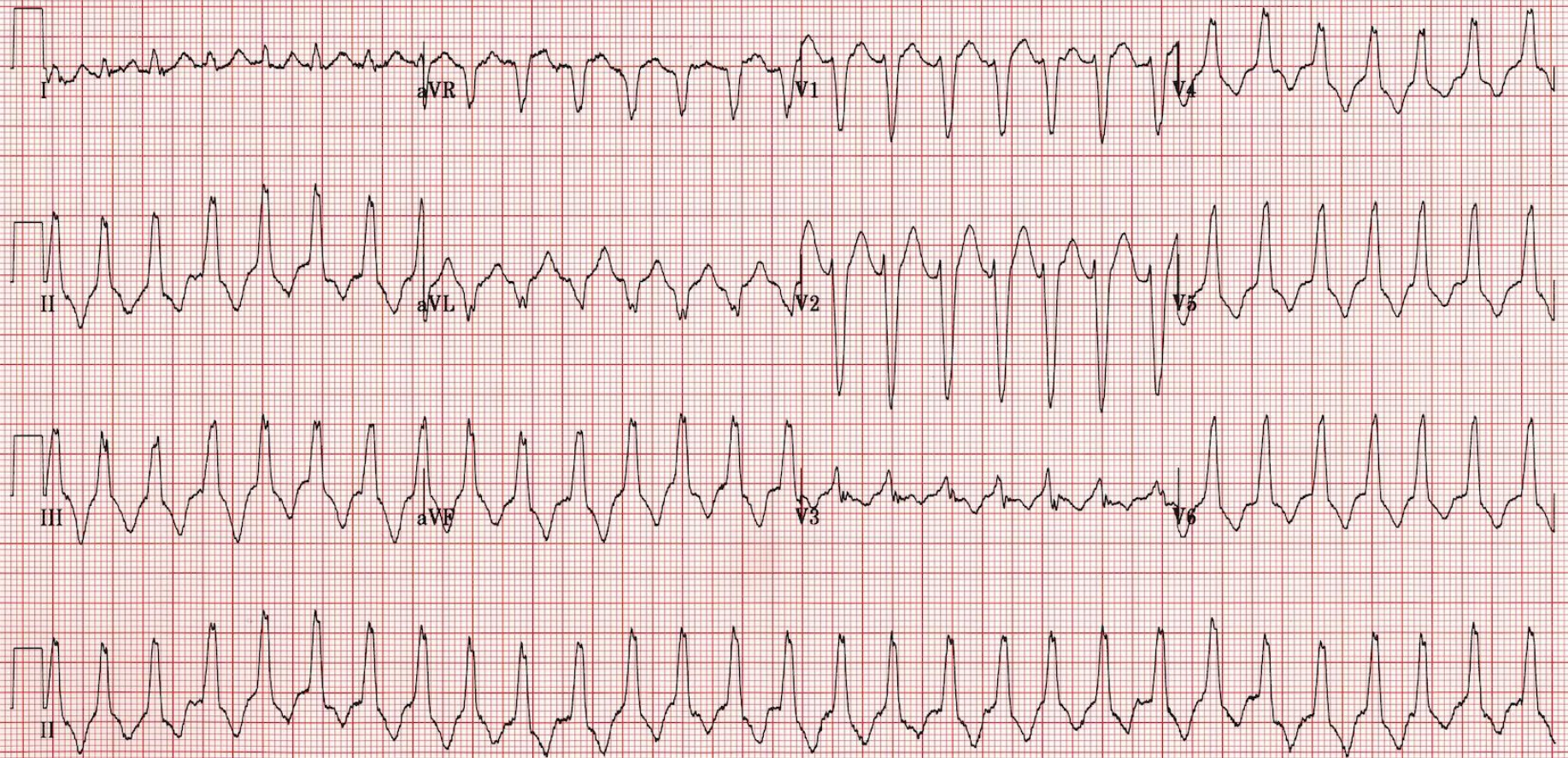


# QUIZ ?





# VT VERSUS SVT WITH ABERRANCY



150 Hz 25.0 mm/s 10.0 mm/mV

4 by 2.5s + 1 rhythm ld

MAC35 009B.1

12SL™v239



**THANKS**