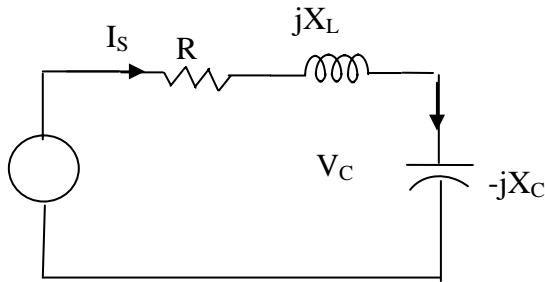


EE 201 Midterm #3

Summer Term 1427/1428

- 1) In the circuit shown above, the value of V_2 with respect to the reference is



- a) -2 V b) 5 V c) 2 V
d) -6 V e) All these answers are wrong.

- 2) In the circuit shown above, the value of V_3 with respect to the reference is

- a) -2 V b) 6 V c) 2 V
d) -6 V e) All these answers are wrong.

- 3) In the circuit shown above, the value of V_3 with respect to the reference is

- a) -2 V b) 6 V c) 2 V
d) -6 V e) All these answers are wrong.

- 4) In the circuit shown below, what is the best method to find the value of I_A .

- a) Node method b) Loop method c) Superposition
d) Thevenin method e) All these answers are wrong.

300 Ω

V_2

5) In the circuit shown above, what is the value of I_A .

- a) -2 V
- b) 6 V
- c) 2 V
- d) - 6 V
- e) All these answers are wrong.

6) Find the Thevenin's equivalent circuit external to the resistor R_L .

- a) 21.2 ohms and 11.2V
- b) 22.3 ohms and 14.3V
- c) 21.2 ohms and 14.3V
- d) 22.3 ohms and 16.3V
- e) All these answers are wrong.

7) Find the Thevenin's equivalent circuit external to the resistor R_L .

- a) 18 ohms and -75V b) 18 ohms and 75V c) 3 ohms and 15V
d) 3 ohms and -15V e) All these answers are wrong.

- a) 24V b) 20V c) 18V
d) 15V e) All these answers are wrong.
- 8)

- a) 3A b) 5A c) 4A
d) 2A e) All these answers are wrong.
- 9)

- a) 2A b) 3A c) 4A
d) 5A e) All these answers are wrong.
- 10)

- a) -1A b) 1A c) 1.5 A
d) -1.5 A e) All these answers are wrong.
- 11)

- a) 32 V b) 30 V c) 28 V
d) 34 V e) All these answers are wrong.
- 12)

- [illegible]

13) Use the circuit of problem 9 and find V_2 .

- a) 20.9V b) -20.9V c) 18.3V
d) -18.3V e) All these answers are wrong.

14) Determine the current I_A .

- a) 0 A b) 1.2 mA c) 1.2 uA
d) 2 mA e) All these answers are wrong.

15) Using the circuit for problem 11, find V_1 .

- a) 565mV b) -715mV c) 563mV
d) 642mV e) All these answers are wrong.