

Lab 3: SNMP in Windows

NET311 – Computer Network Management

Instructor: Dr. Mostafa Dahshan

Objectives

1. Install and configure SNMP service in Windows Server.
2. Use a MIB browser software to interact with Windows SNMP agent.

References

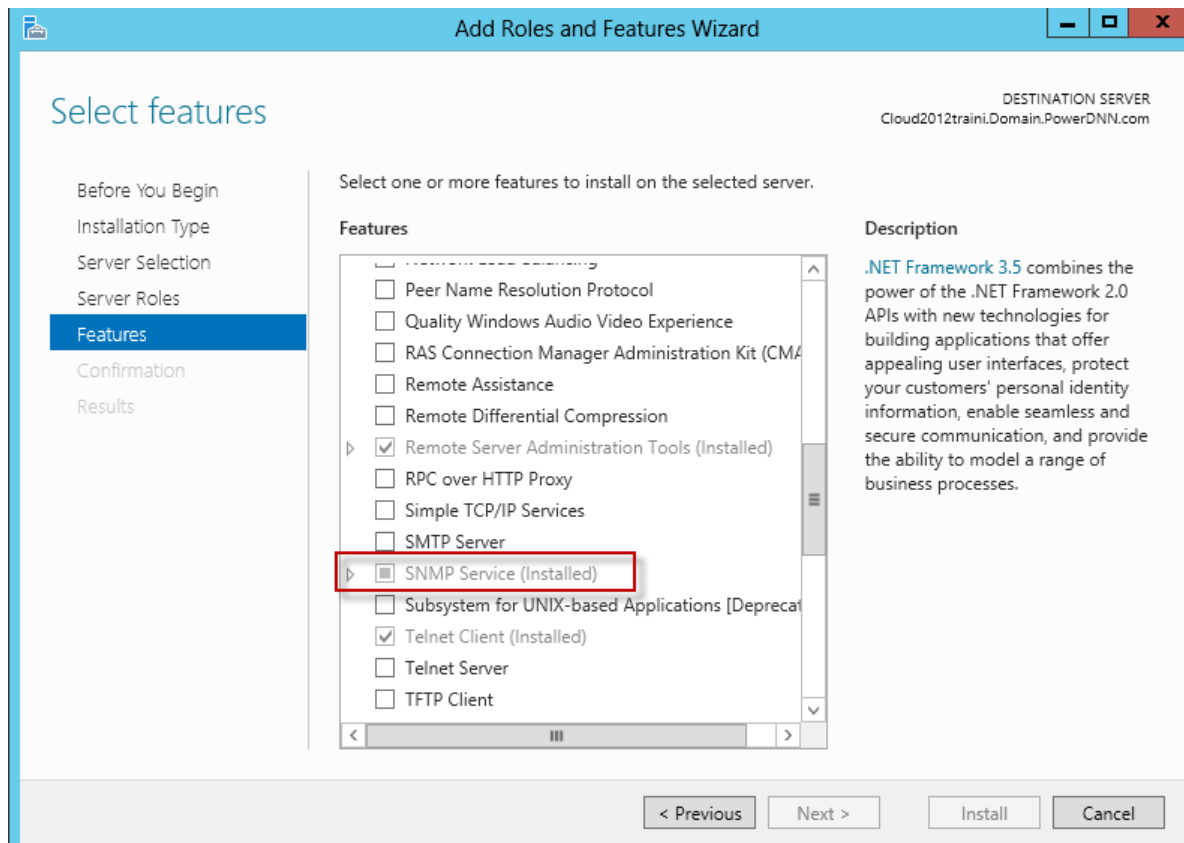
1. [How to Install SNMP and Configure the Community String](#), Managed.com.
2. [SnmpB download](#), SourceForge.net.

Instructions

1. Read the lab instructions.
2. Provide question answers and screenshots in the supplied answer sheet.
3. After finishing the lab, upload your saved answer sheet to LMS.

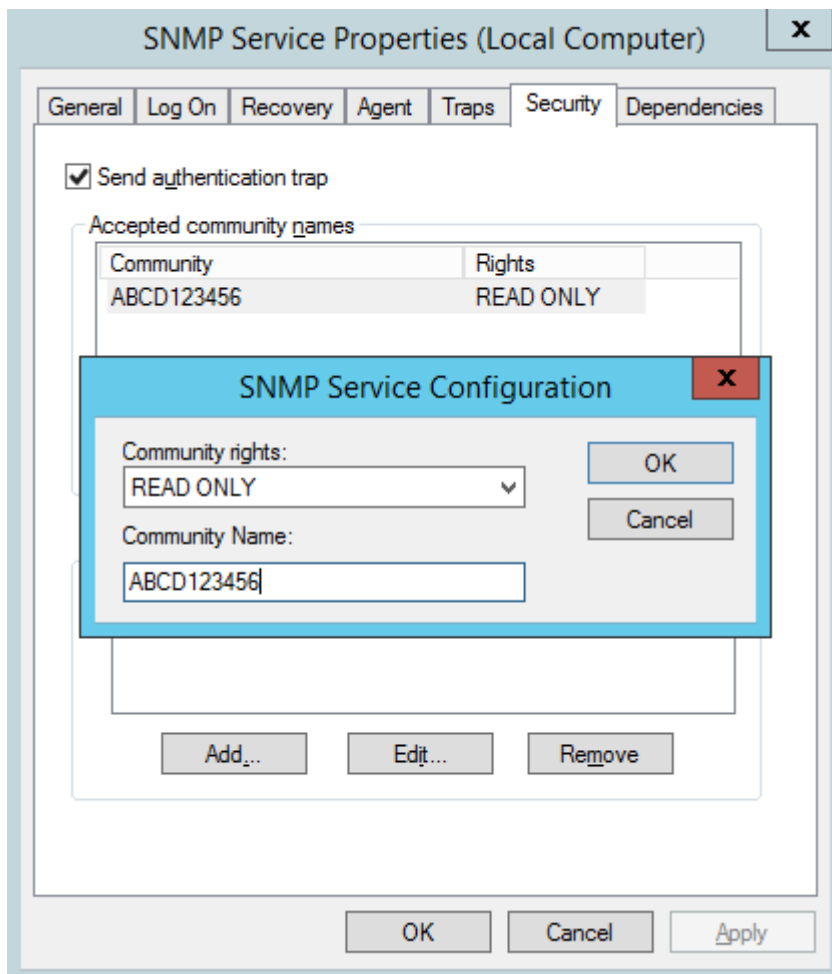
Part 1: Install and Configure SNMP Service in Windows Server

1. Log in to Windows Server.
2. Click on **Windows Key > Administrative Tools > Server Manager**.
3. Click **Manage > Add Roles and Features**.
4. Click **Next > Next > Next > Next**. Follow steps to install SNMP Service.



Lab sheet 1.1: provide a screenshot of the Add Roles and Features screen.

5. Click on **Windows Key > Administrative Tools > Services**.
6. Right click on **SNMP Service** and click on **Properties**.
7. Click on the **Security** tab.
8. Type your Community Name. Make sure it is **READ ONLY**.



Lab sheet 1.2: type the value of the Community Name.

Lab sheet 1.3: provide a screenshot of your Security configuration screen.

9. Click on the Agent tab and enter your **Contact** and **Location** information.

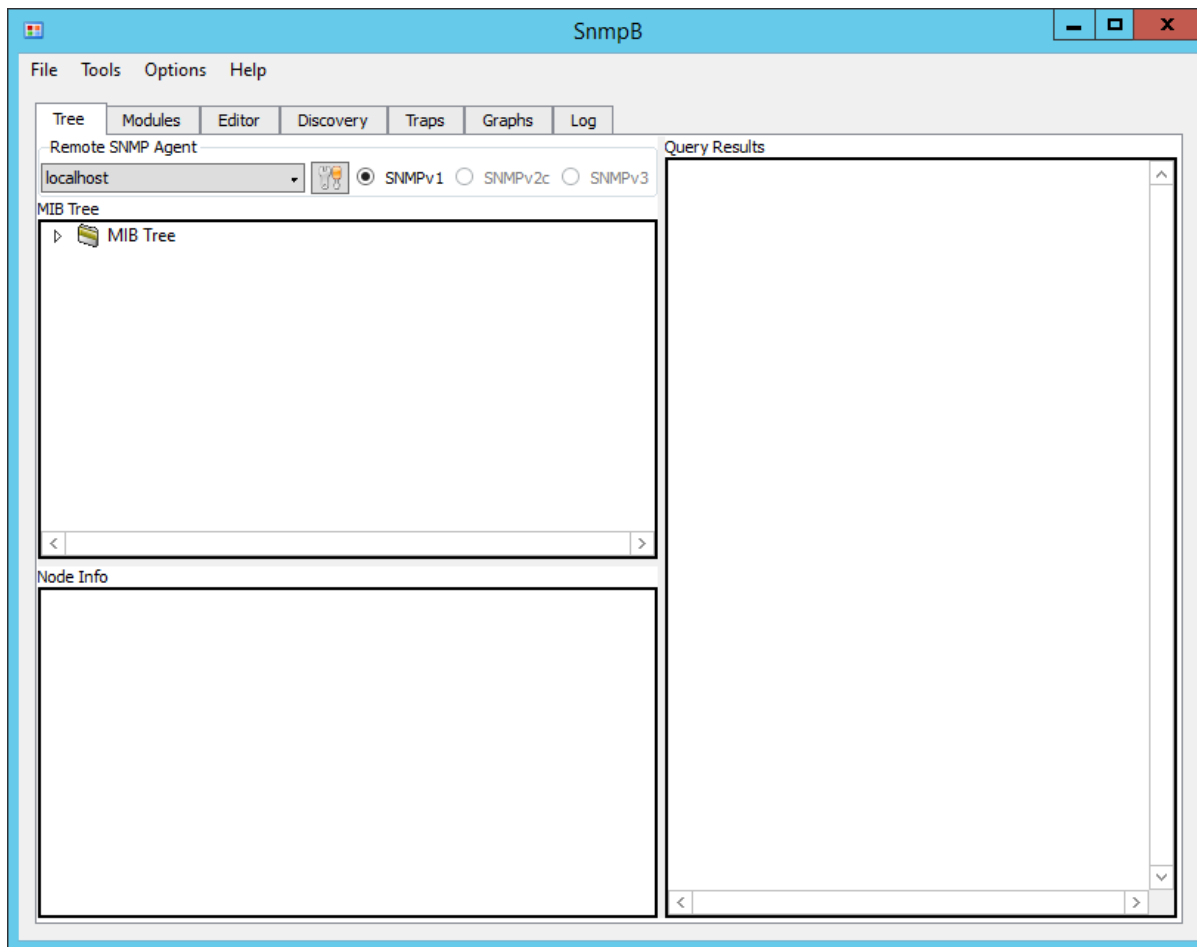
The image shows a Windows-style dialog box titled "SNMP Service Properties (Local Computer)". It has a blue title bar with a red close button. The dialog has several tabs: "General", "Log On", "Recovery", "Agent", "Traps", "Security", and "Dependencies". The "Agent" tab is selected. Inside the dialog, there is a text area with the following text: "Internet management systems may request the contact person, system location, and network services for this computer from the SNMP service." Below this text are two text input fields. The first is labeled "Contact:" and contains the text "NET311". The second is labeled "Location:" and contains the text "Lab 4". Below these fields is a group box labeled "Service" containing five checkboxes: "Physical" (unchecked), "Applications" (checked), "Datalink and subnetwork" (unchecked), "Internet" (checked), and "End-to-end" (checked). At the bottom of the dialog are three buttons: "OK", "Cancel", and "Apply".

Lab sheet 1.4: type the contact information you entered.

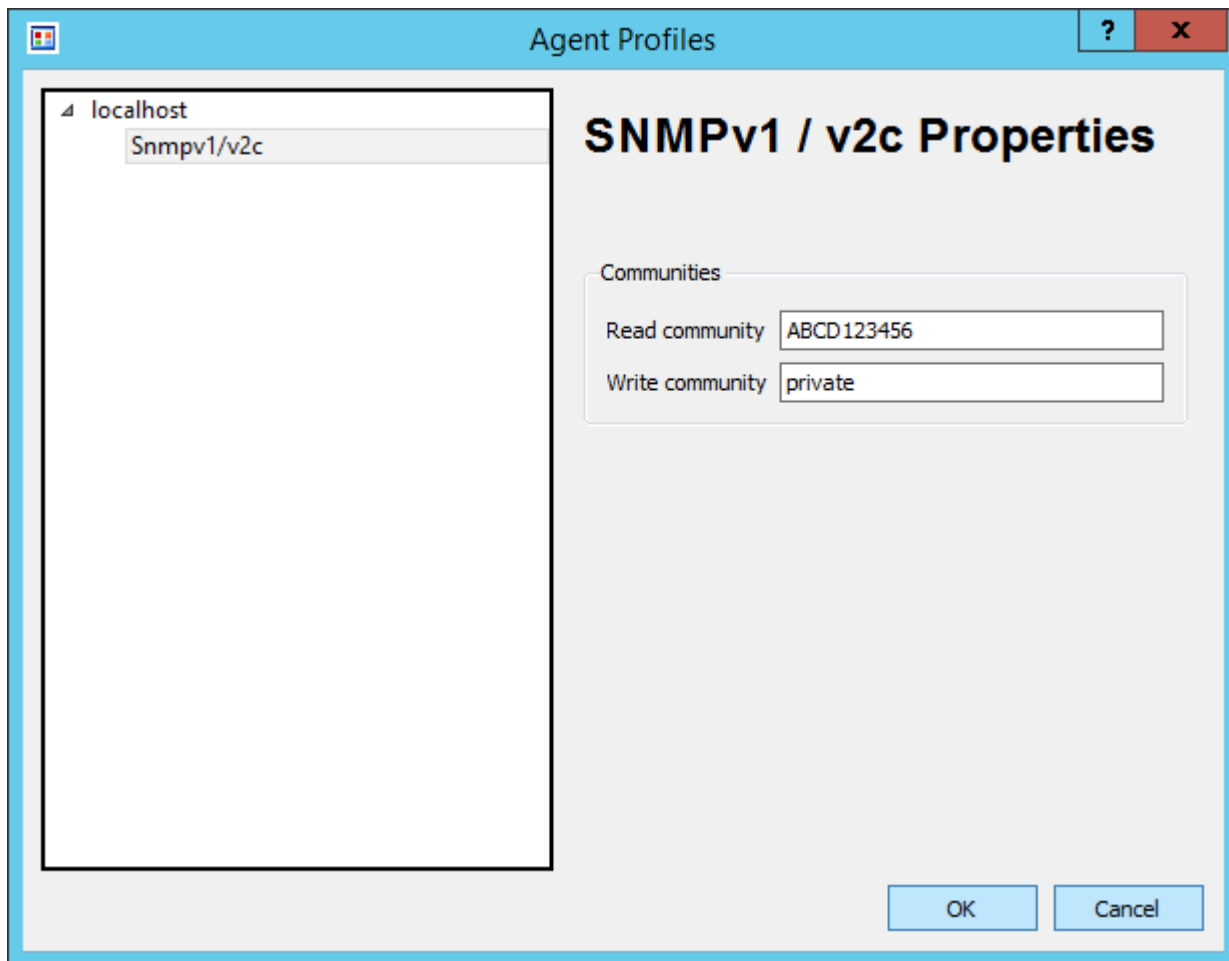
Lab sheet 1.5: provide a screenshot of your Agent configuration screen.

Part 2: Use a MIB browser to interact with Windows SNMP agent

1. Install the SnmpB software.
2. Run the SnmpB software.



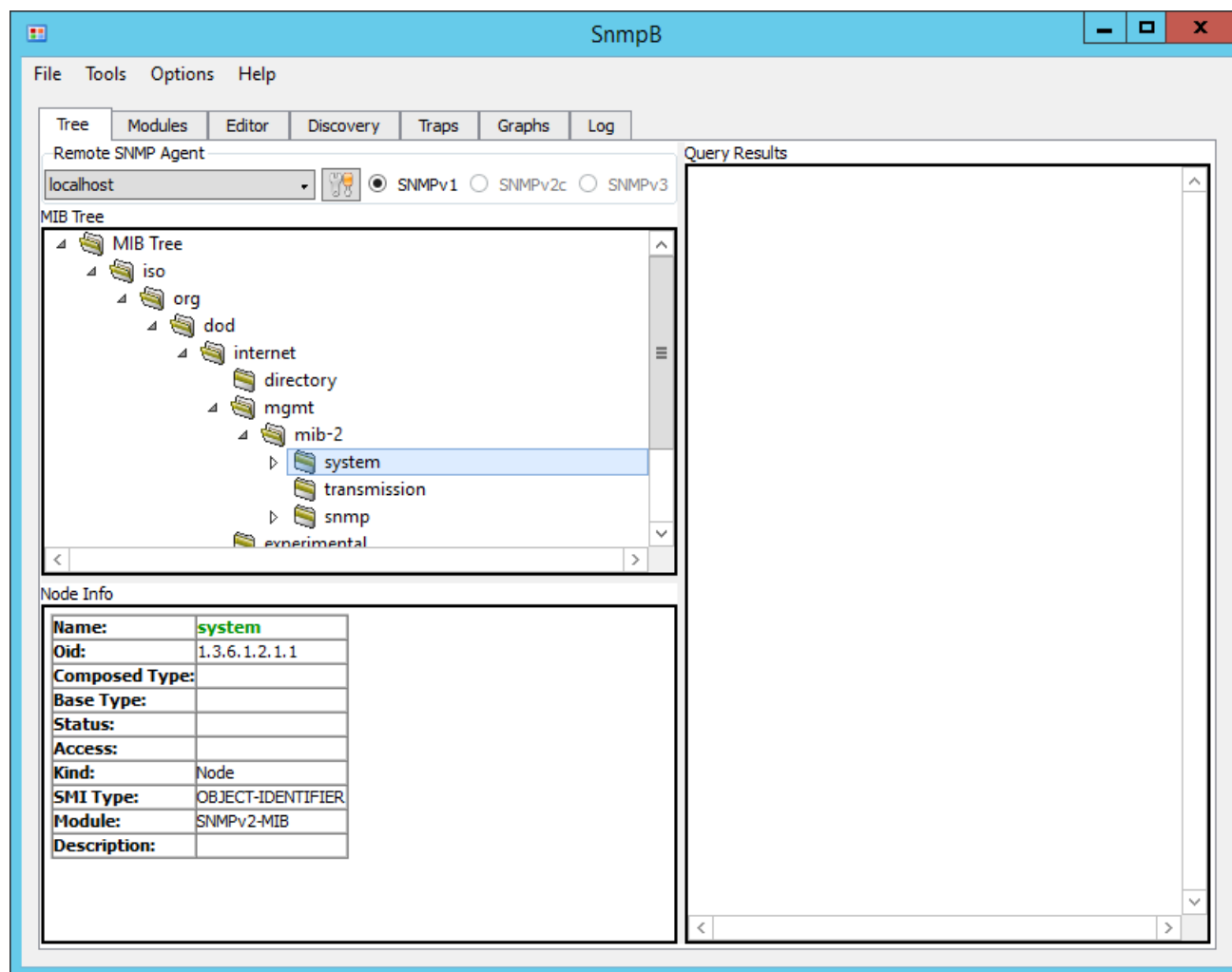
3. Click Options > Manage Agent Profiles.
4. Expand the **localhost** profile.
5. Under Snmpv1/v2c, enter the Read Community value configured in Part 1.



6. Click OK.

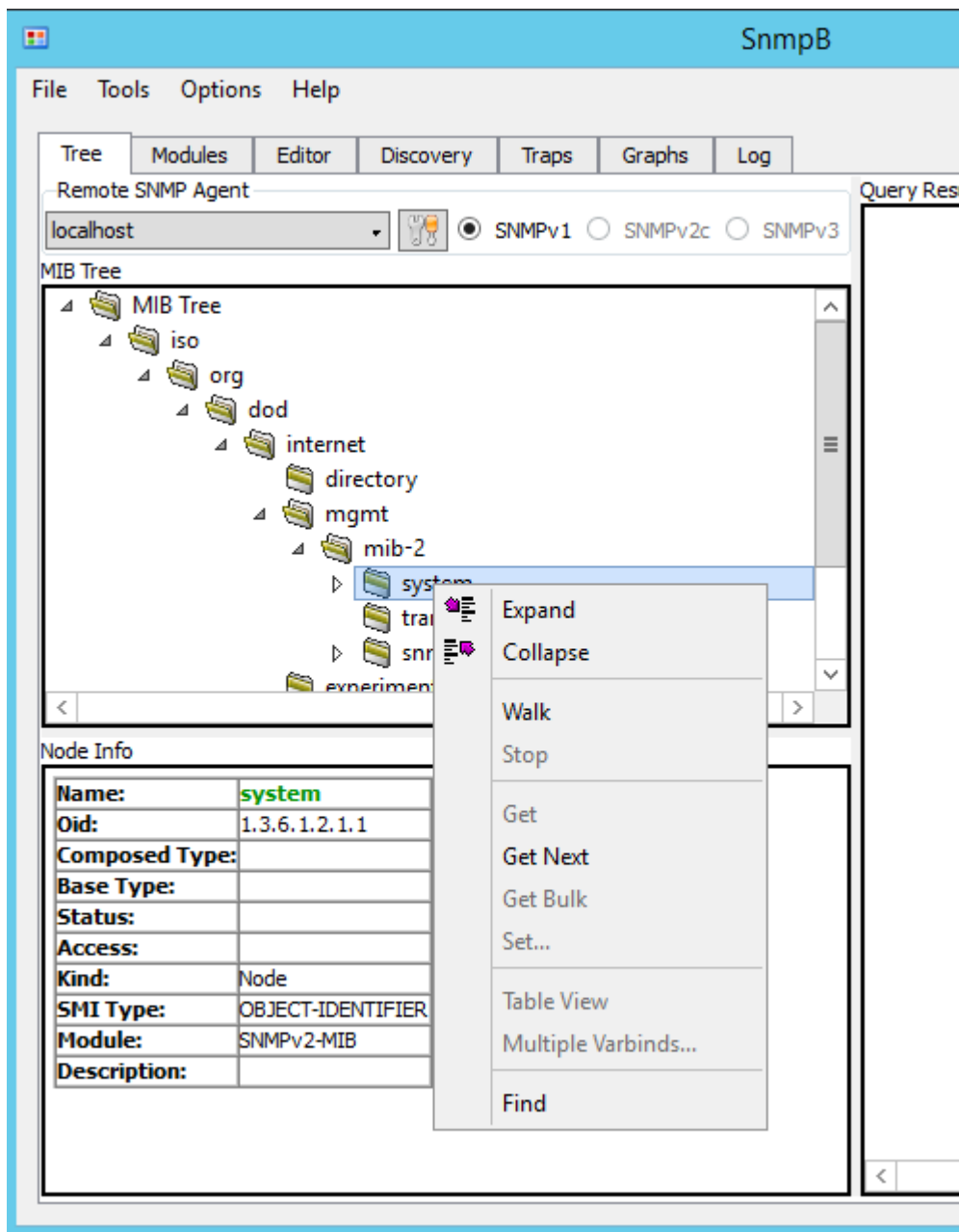
Lab sheet 2.1: provide a screenshot of the running SnmpB screen.

7. Expand the MIB Tree > iso > org > dod > internet > mgmt > mib-2 > system



Lab sheet 2.2: type the value of the OID you selected.

8. Right-click on **system**, then click on **Walk**.



The screenshot shows the SnmpB application window. The 'Remote SNMP Agent' is set to 'localhost'. The 'MIB Tree' panel shows a hierarchical structure with 'system' selected under 'mib-2'. The 'Node Info' panel displays details for the 'system' node. The 'Query Results' panel shows the output of an SNMP query.

MIB Tree

- MIB Tree
 - iso
 - org
 - dod
 - internet
 - directory
 - mgmt
 - mib-2
 - system (selected)
 - transmission
 - snmp
 - experimental

Node Info

Name:	system
Oid:	1.3.6.1.2.1.1
Composed Type:	
Base Type:	
Status:	
Access:	
Kind:	Node
SMI Type:	OBJECT-IDENTIFIER
Module:	SNMPv2-MIB
Description:	

Query Results

```

-----SNMP query started-----
1: sysDescr.0 Hardware: Intel64 Family 6 Model 58 Stepping
2: sysObjectID.0 enterprises.311.1.1.3.1.2
3: sysUpTime.0 1:37:42.51
4: sysContact.0 NET311
5: sysName.0 WIN-8R2RSS0ARM3
6: sysLocation.0 Lab 4
7: sysServices.0 76
-----SNMP query finished-----
Total # of Requests = 8
Total # of Objects = 8
  
```

Lab sheet 2.3: provide the Query Result contents (copy/paste).

Extra Tasks

Load more modules in SnmpB that can help finding more OIDs. For example, use IF-MIB to find the ifDescr.

Use alternative SNMP browser tool, such as snmputilg.