

# Plant Cell

Rana Alqusumi

# Lab 2

- **Introduction**
- **Cell Theory**
- **Definition Of Cell**
- **Example Of Cells**
- **Cell Types**
- **Plant Cell**
- **Living Contents**
- **Non-Living Ccontents**

# Introduction

- **Cells are the basic units of organisms**
- **Cells can only be observed under a microscope**

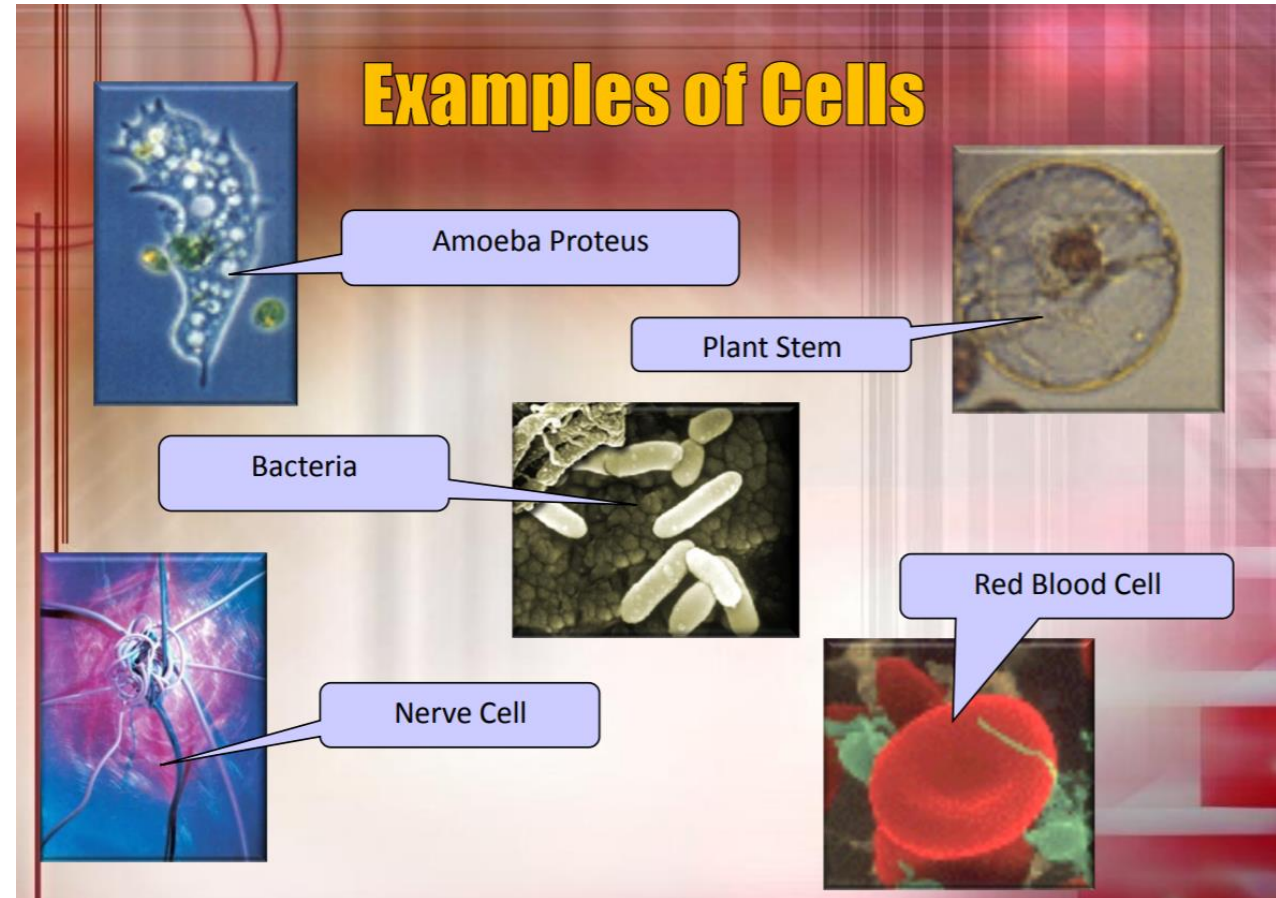
# Cell Theory

- All organisms made up of cells
- Cells are the basic unit of structure and function in an organisms (Basic unit of life)
- All cells come from cells that already exist.

## Definition Of Cell

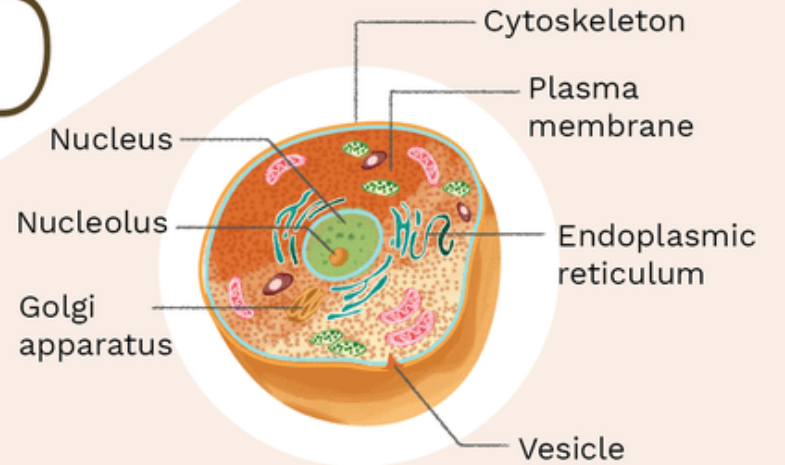
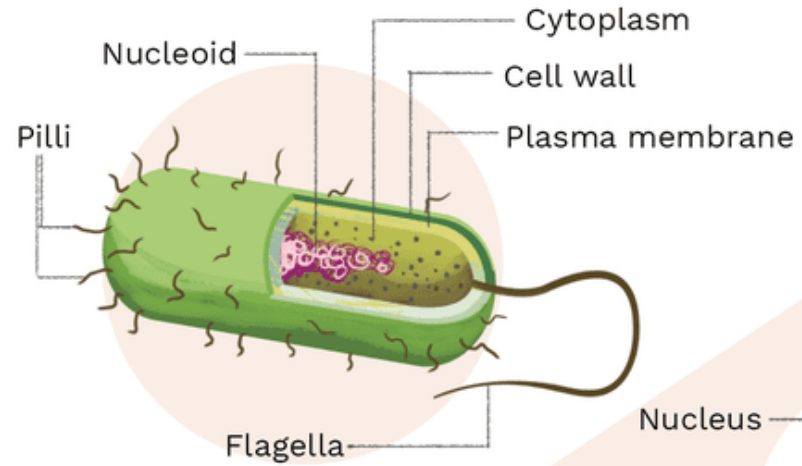
- **Cell is the smallest unit that is capable of performing life functions.**

# Examples Of cells



# Cell Types

## PROKARYOTIC CELL



## EUKARYOTIC CELL

## Plant Cell

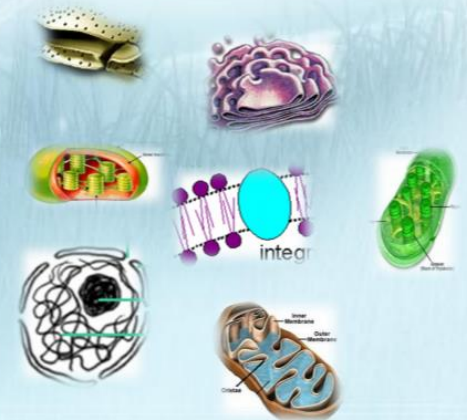
- **The unique components that the plant cell has are:**
  - 1-Cell wall that made of cellulose**
  - 2-Chloroplast that contain the chlorophyll.**



# Living contents

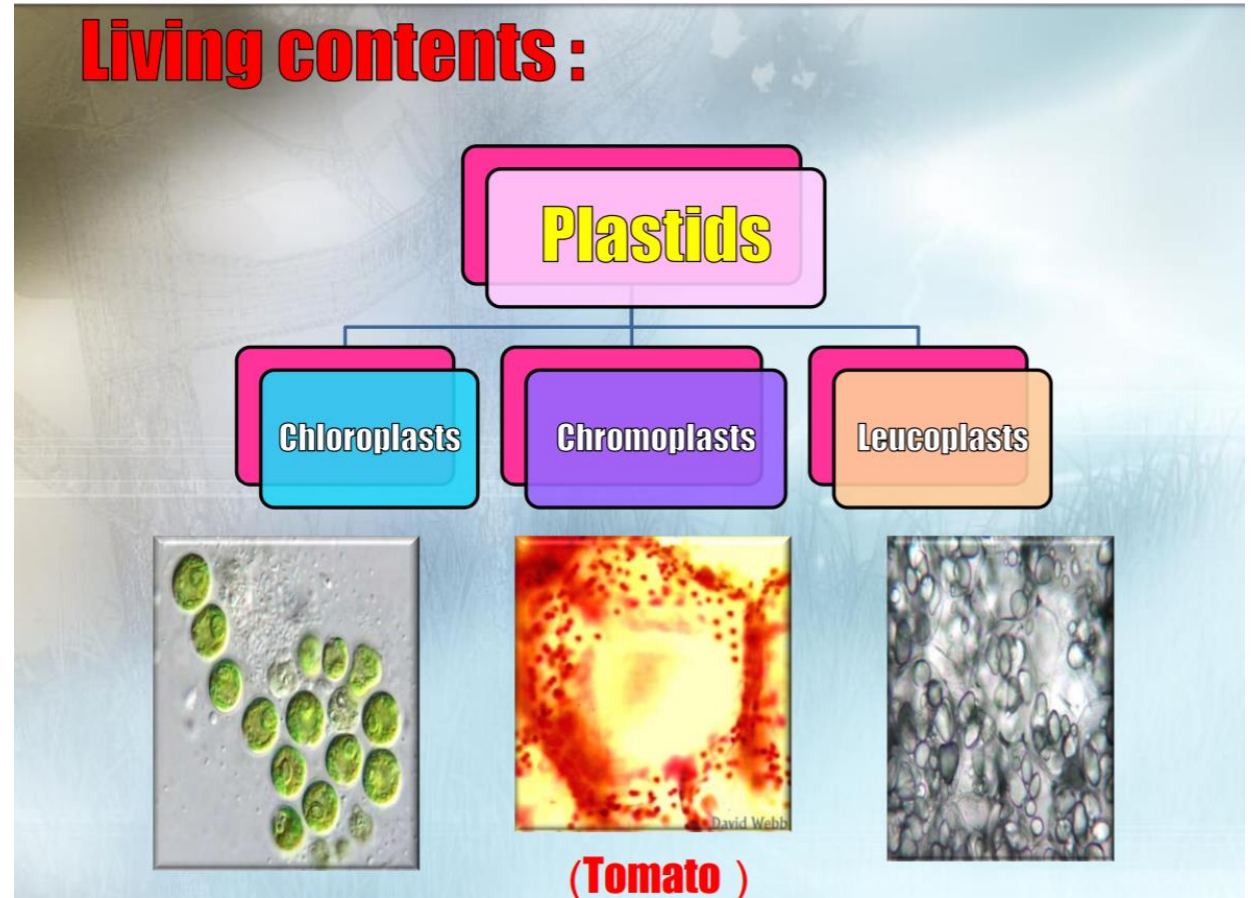
- **Living contents**

- **cytoplasm**
- **nucleus**
- **plastids** (Contain the green pigment **chlorophyll**)
- **mitochondria**
- **golgi bodies**
- **lysosome**
- **endoplasmic reticulum**
- **ribosomes**
- **microtubules**



# Living contents

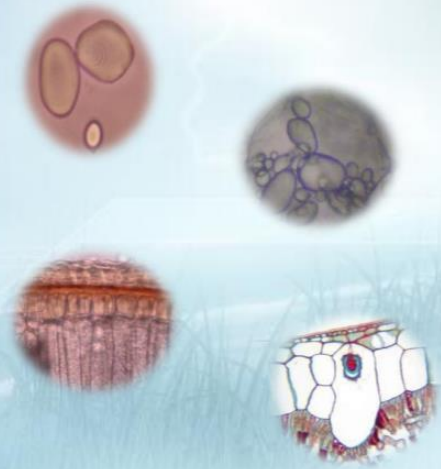
## Living contents :



# Non-living contents

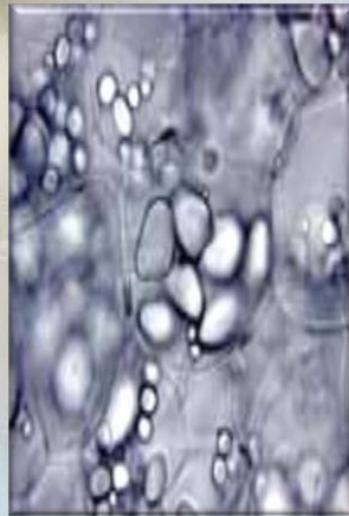
## • Non-living contents

- Starch granules
- Vacuoles
- Crystals
- Aleurone grains
- Cell wall



Non-living  
contents

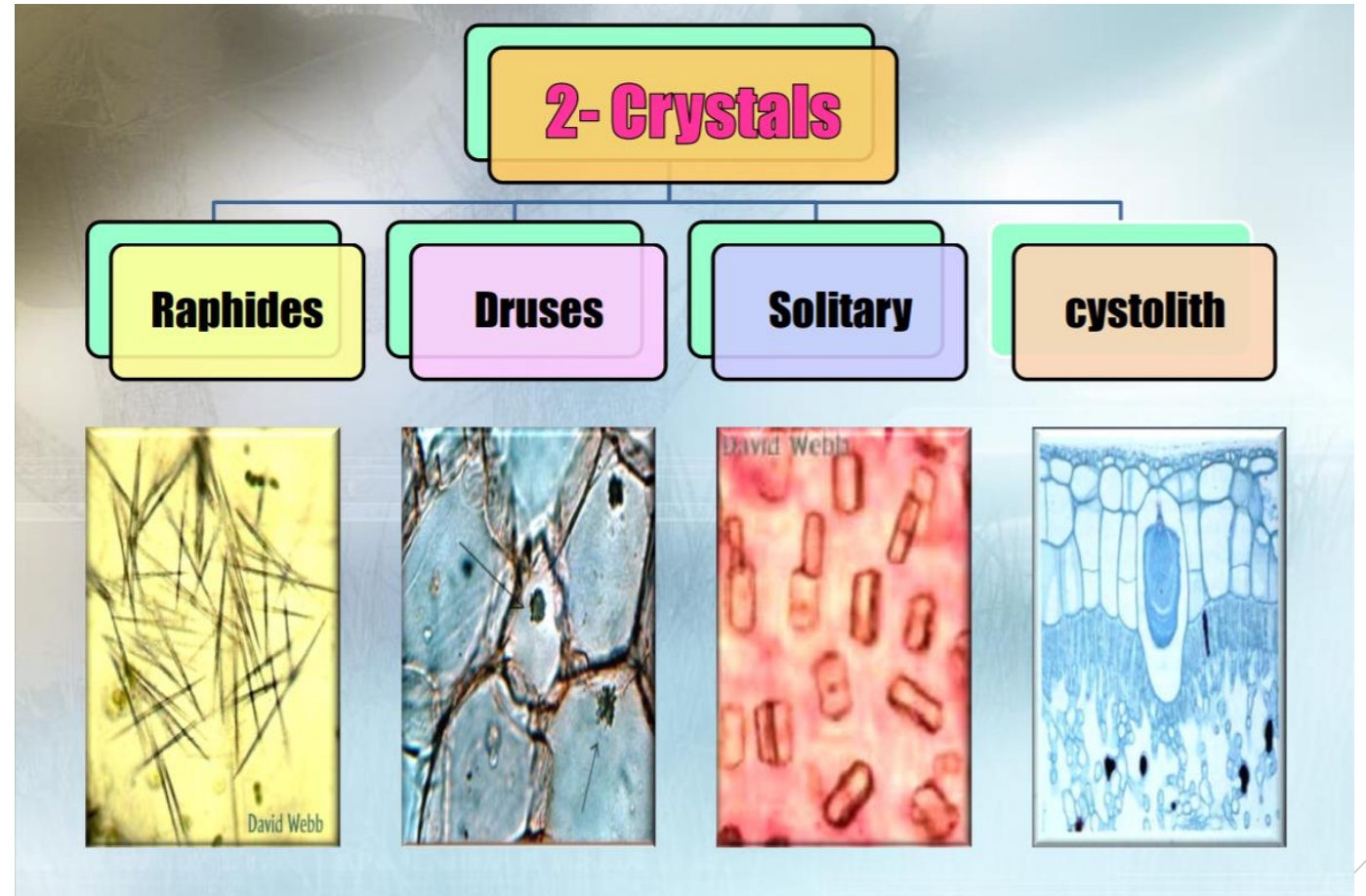
## 1-Starch grains



**Starch grains (potato)**

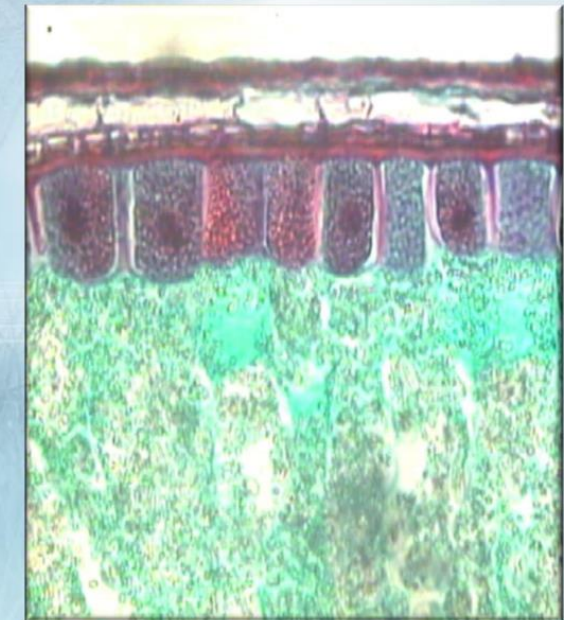
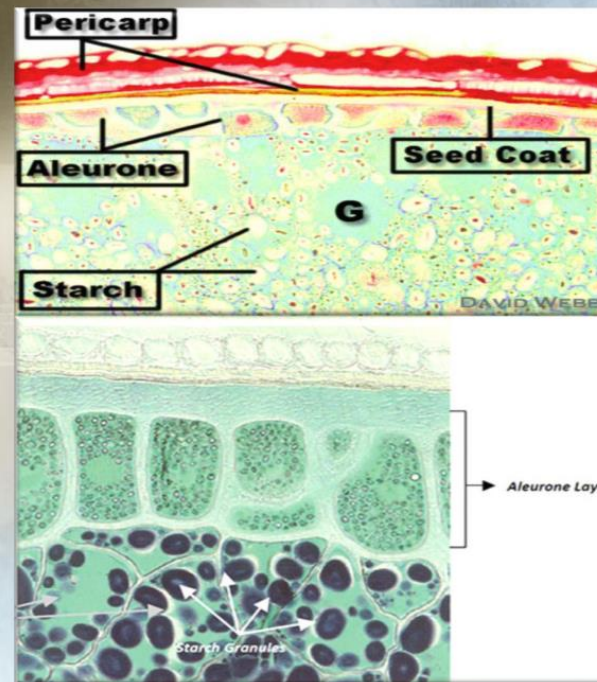


Non-living  
contents



Non-living  
contents

### 3- Aleurone grains



**Aleurone grains (Wheat )**

# Reference

- [https://fac.ksu.edu.sa/sites/default/files/lkhly\\_lnbty\\_-\\_mly\\_2\\_md1\\_0.pdf](https://fac.ksu.edu.sa/sites/default/files/lkhly_lnbty_-_mly_2_md1_0.pdf)