

280 míc

Amal AL-Garawí

aalgarawí@ksu.edu.sa

part: 2

lab:1

1-

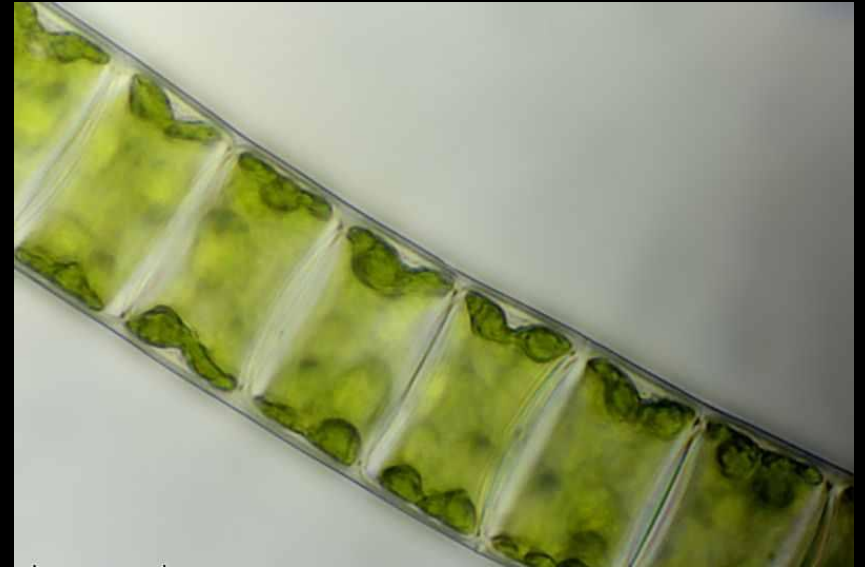
Division: Chlorophyta

Class: Chlorophyceae

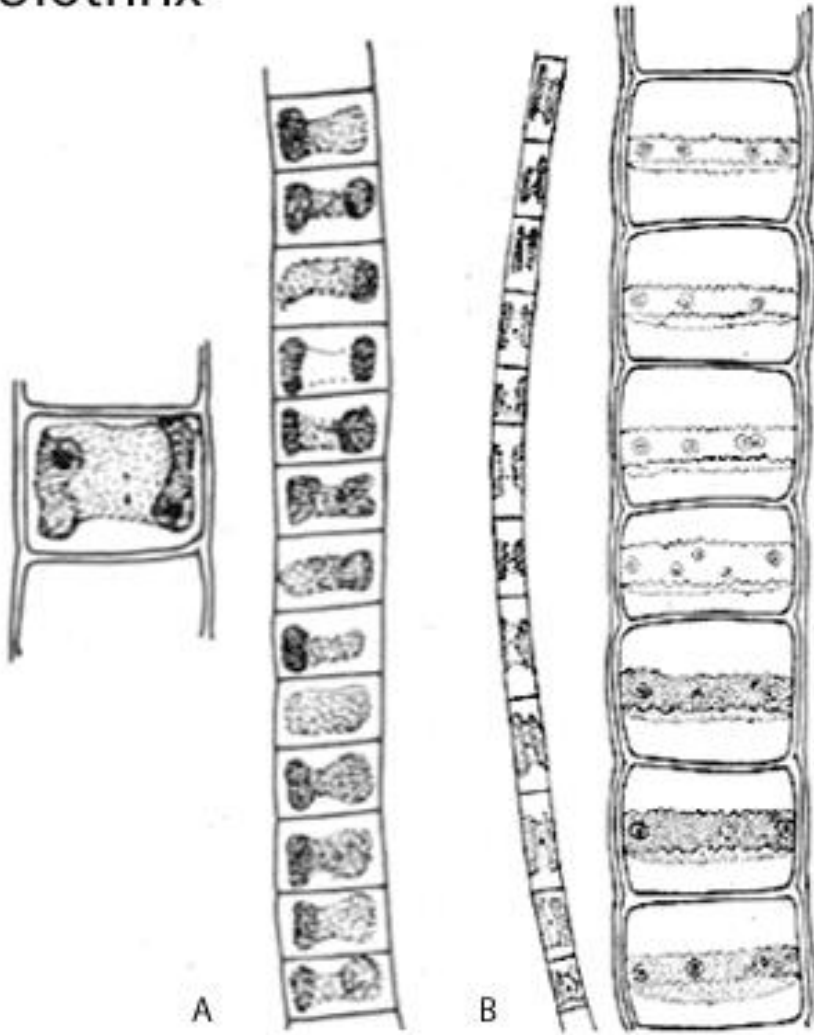
Order: Ulotrichales

Family: Ulotrichaceae

*Ulothrix*

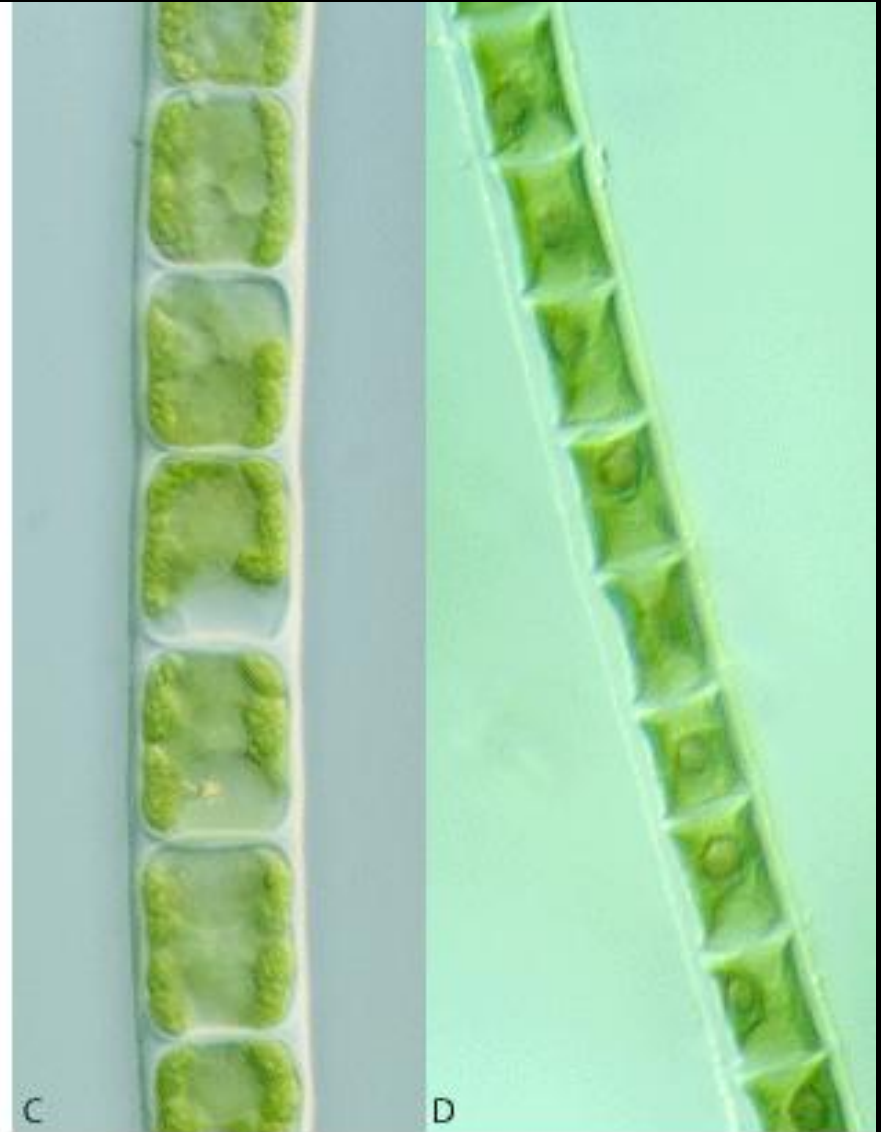


# Ulothrix



A

B



C

D

A, B after Prescott (1951)

C, D after Entwistle et al. (1997)

# *Ulothrix*

2-

**Division:** Chlorophyta

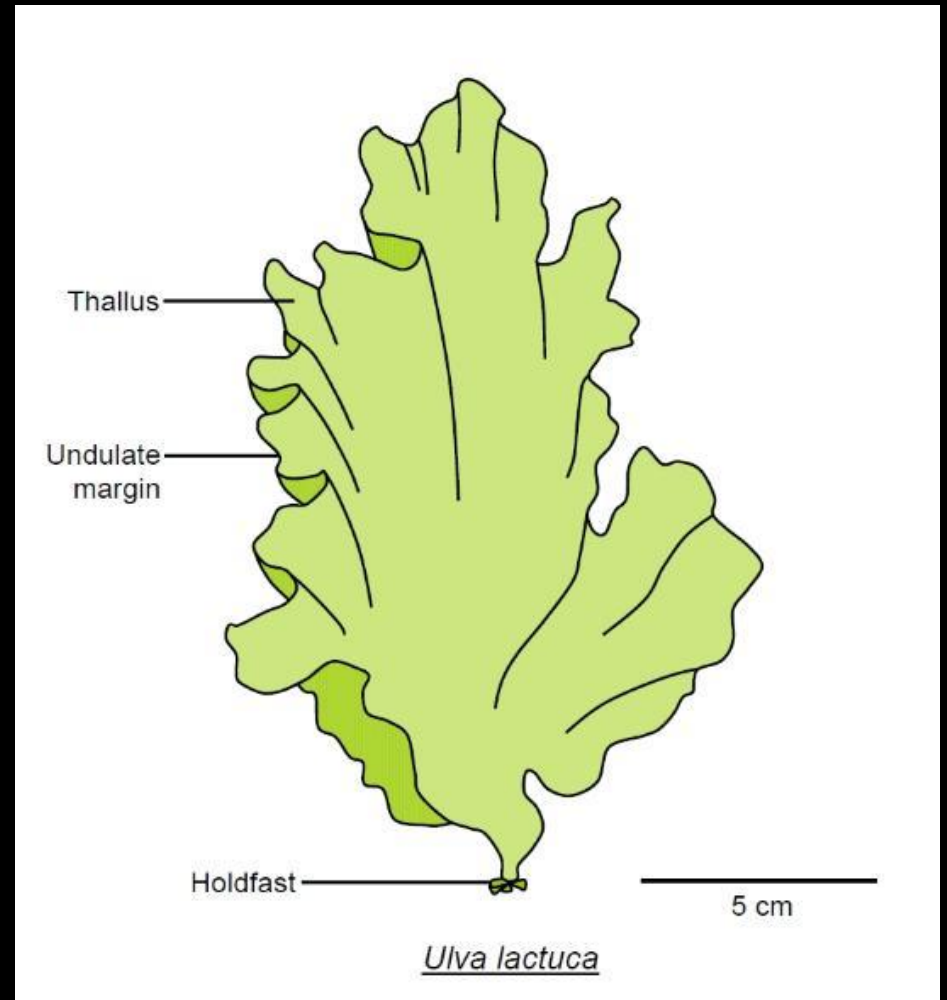
**Class:** Chlorophyceae

**Order:** Ulotrichales

**Family:** Ulvaceae

**Ulva**





*Ulva*



3-

**Division:** Chlorophyta

**Class:** Chlorophyceae

**Order:** Ulotrichales

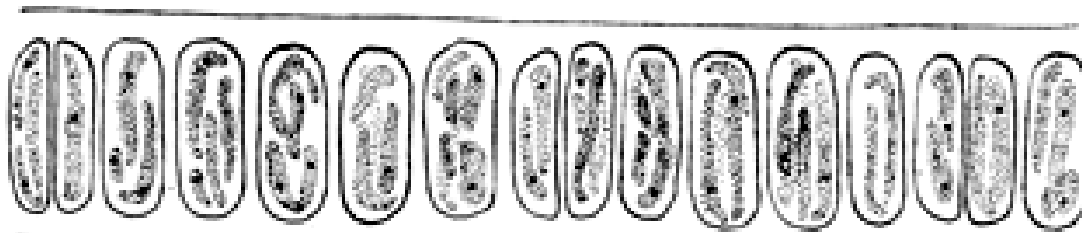
**Family:** Ulvaceae

**Enteromorpha**

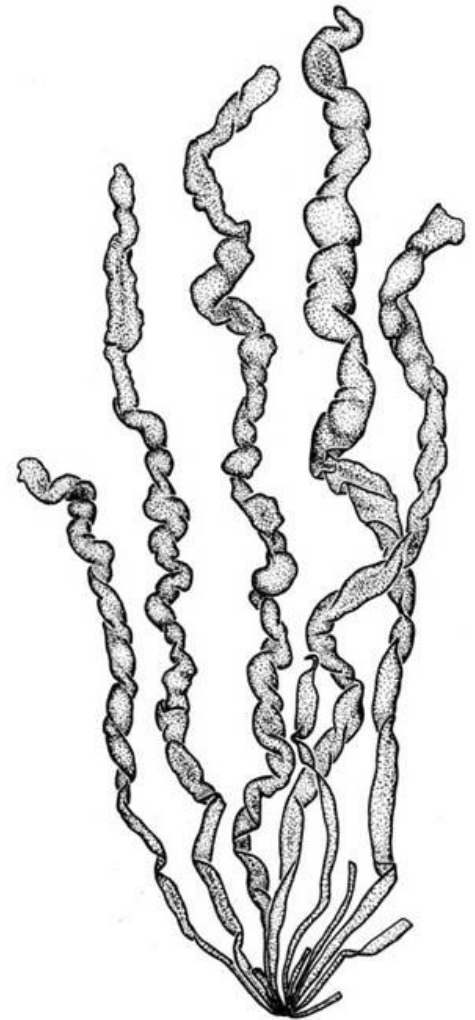


© by tom linder 2010





20  $\mu\text{m}$



# *Enteromorpha*

4-

**Division:** Chlorophyta

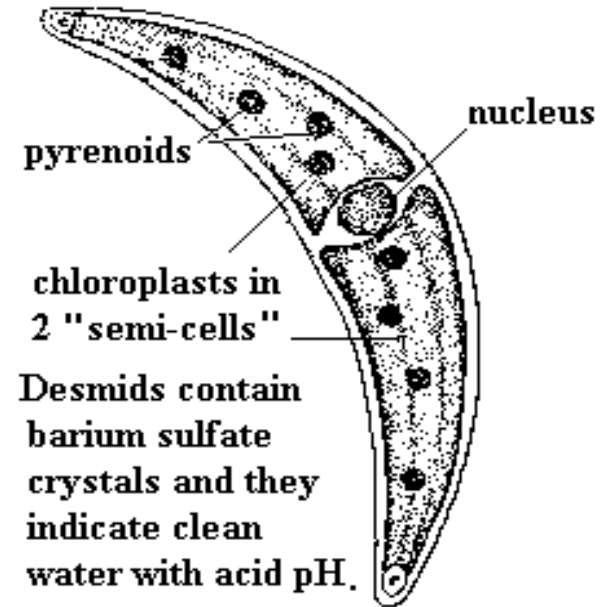
**Class:** Chlorophyceae

**Order:** Zygnematales

**Family:** Desmidiaceae

**Closterium**

9.43 *Closterium*



# *Closterium*

5-

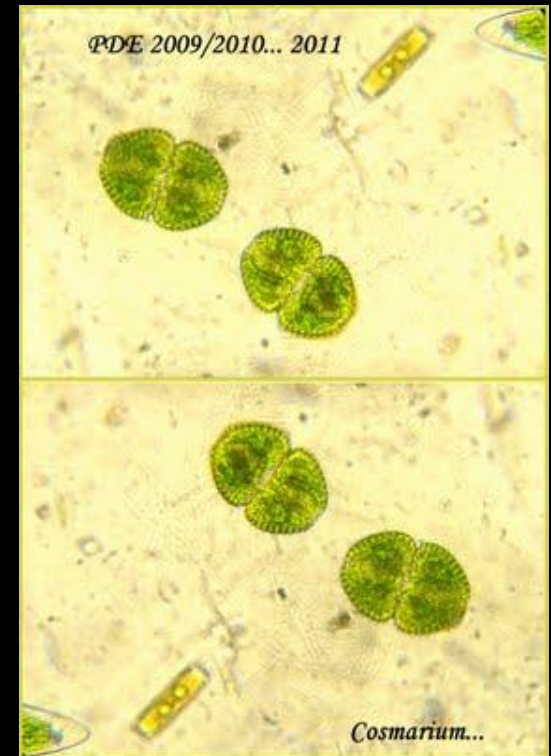
**Division:** Chlorophyta

**Class:** Chlorophyceae

**Order:** Zygnematales

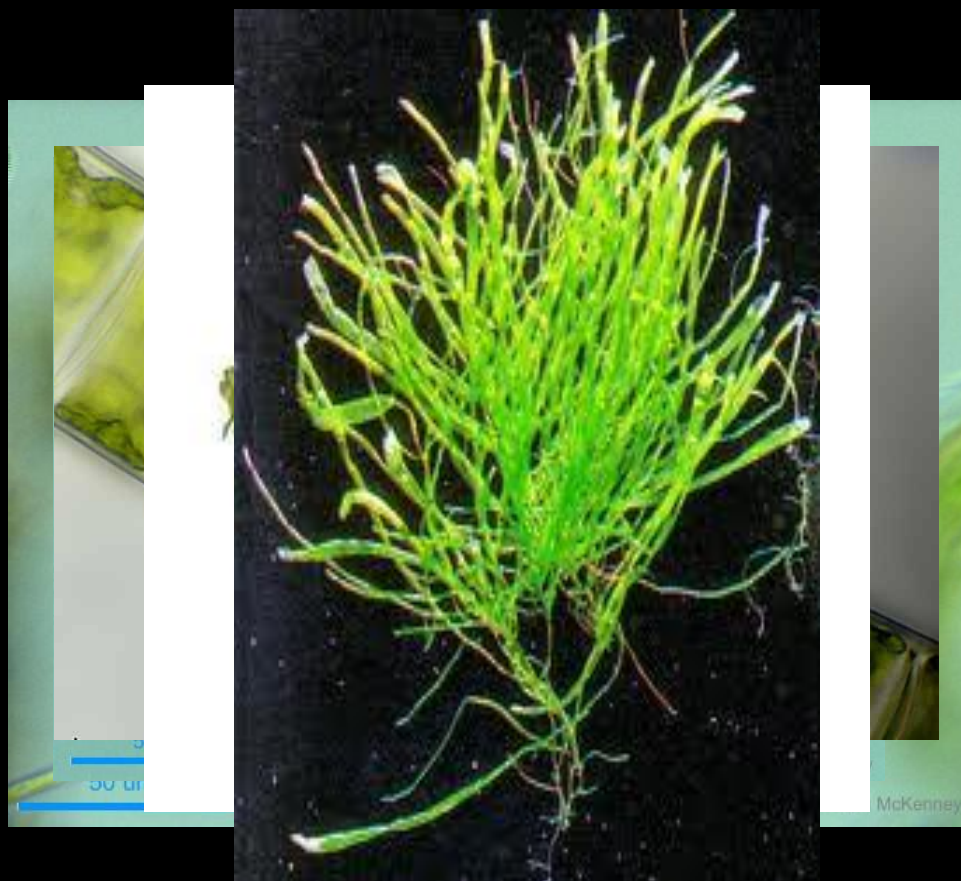
**Family:** Desmidiaceae

**Cosmarium**



# *Cosmarium*





McKenney