

280 míc

Amal AL-Qarawí

part: 2

lab:2

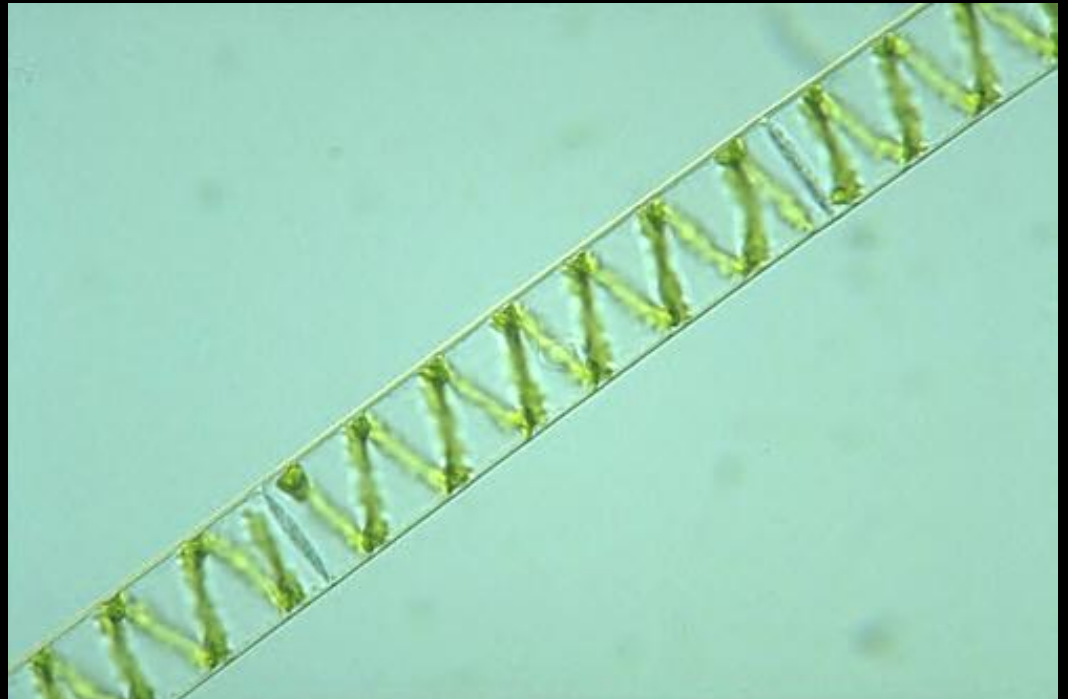
Division: Chlorophyta

Class: Chlorophyceae

Order: Zygnematales

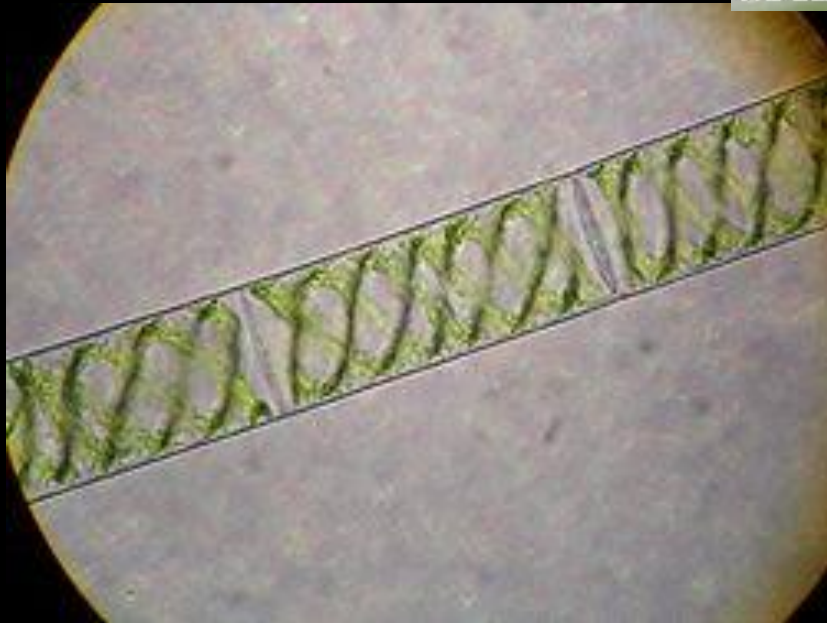
Family: Zygnemataceae

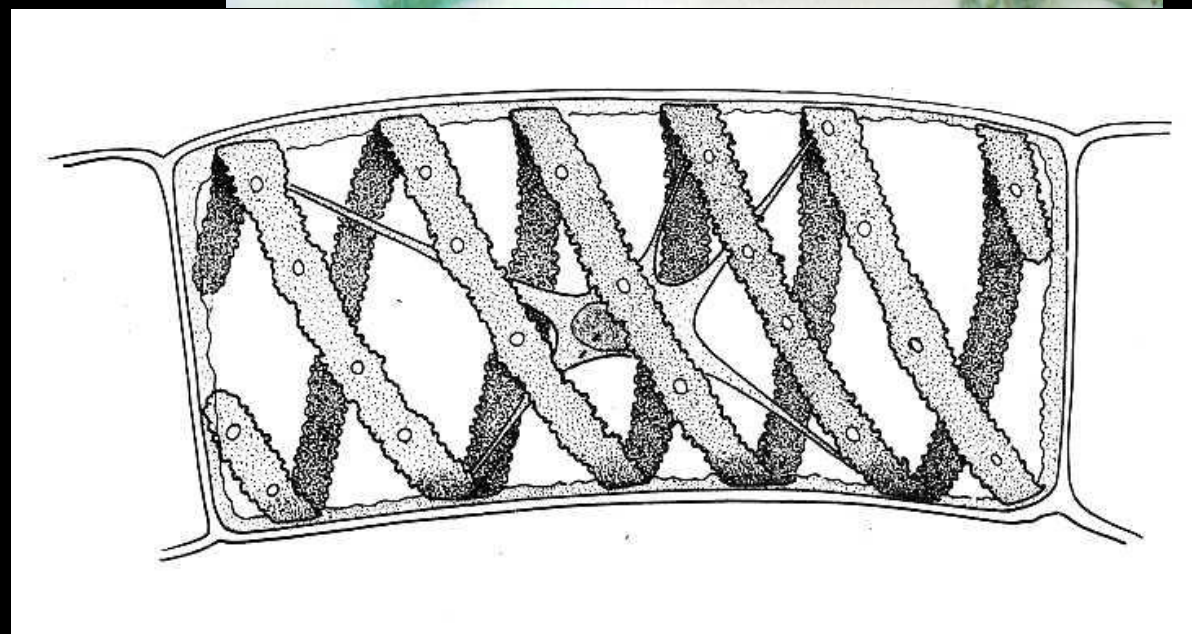
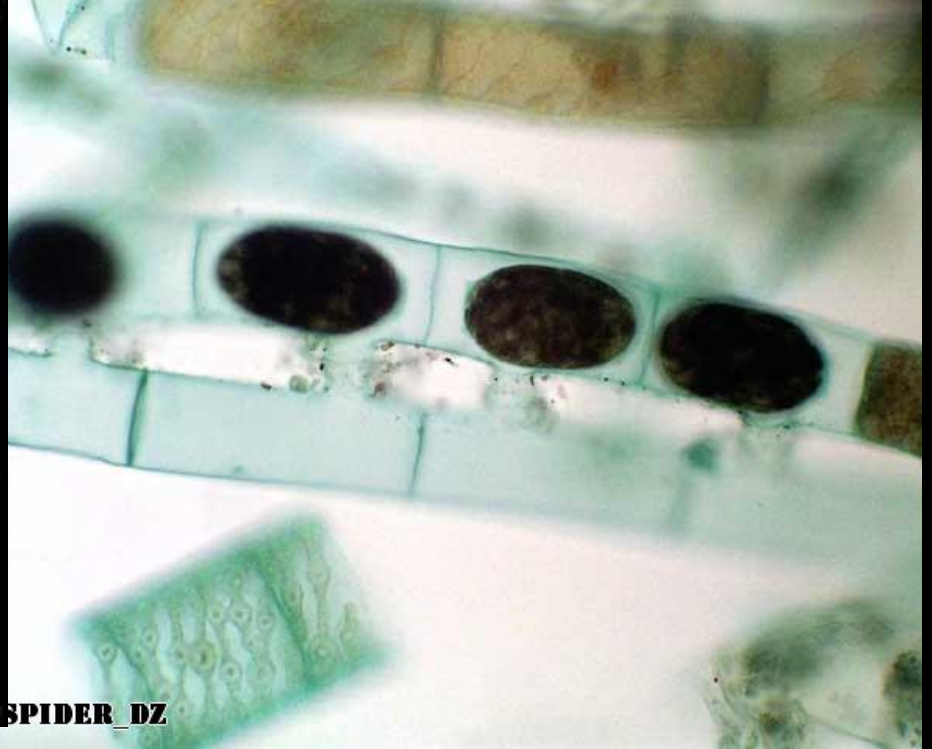
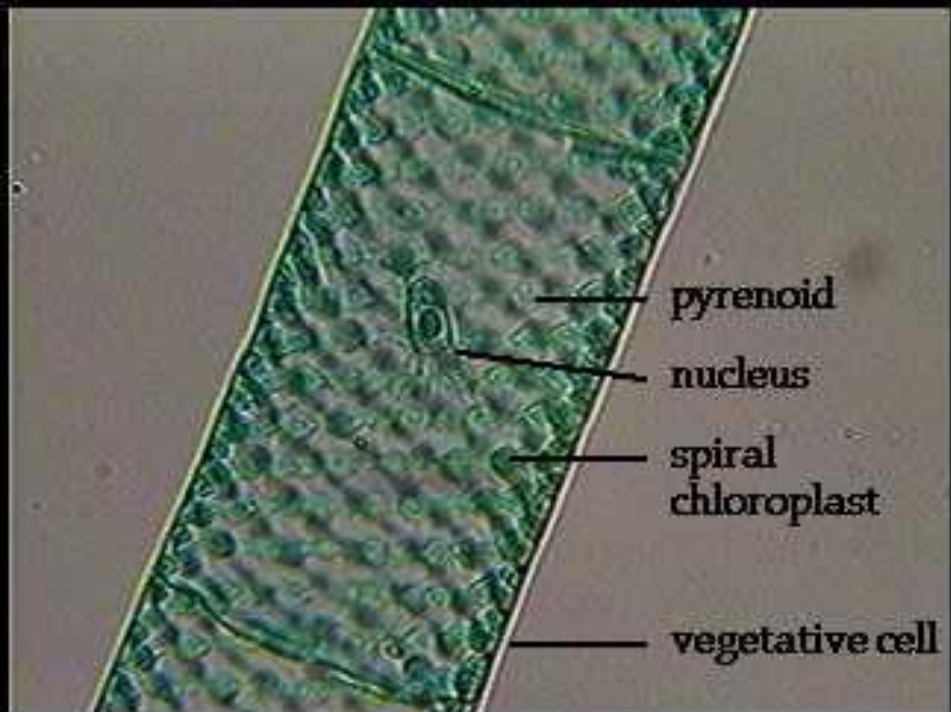
### 1- Spirogyra





**SPIDER\_DZ**





# Spirogyra



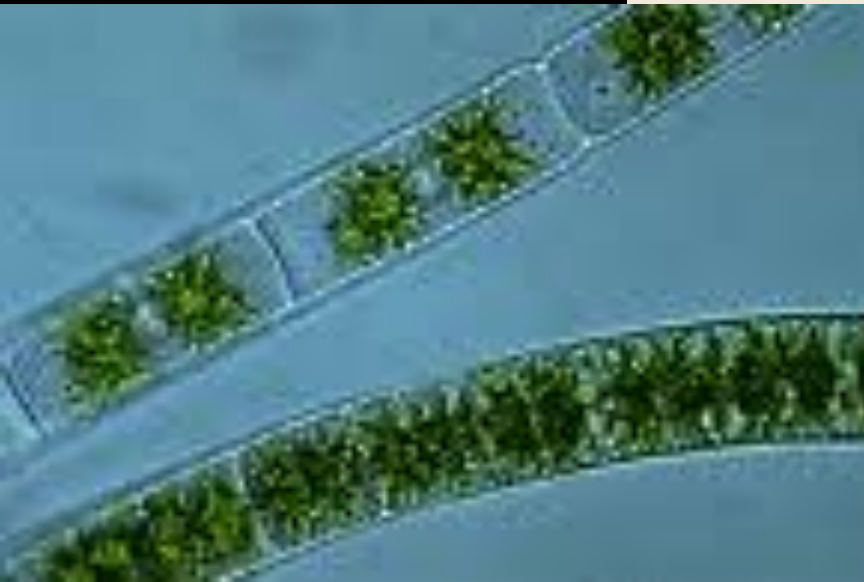
Division: Chlorophyta

Class: Chlorophyceae

Order: Zygnematales

Family: Zygnemataceae

## 2- Zygnema



# Zygnema

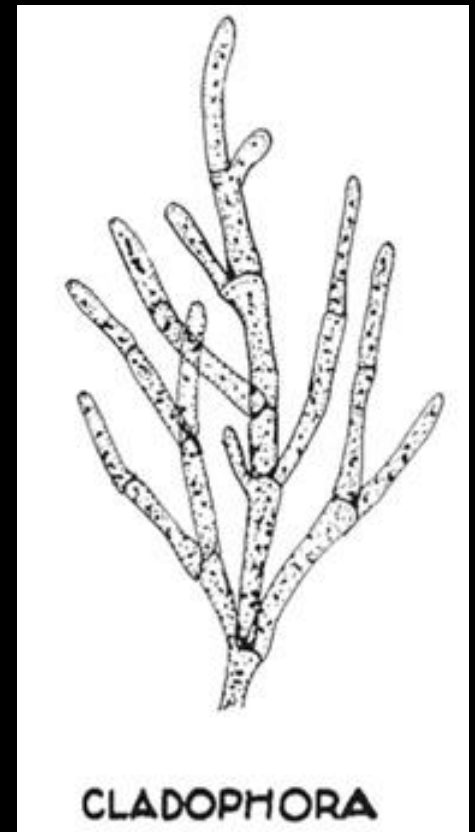
**Division:** Chlorophyta

**Class:** Chlorophyceae

**Order:** Cladophorales

**Family:** Cladophoraceae

**Cladophora**





# *Cladophora*

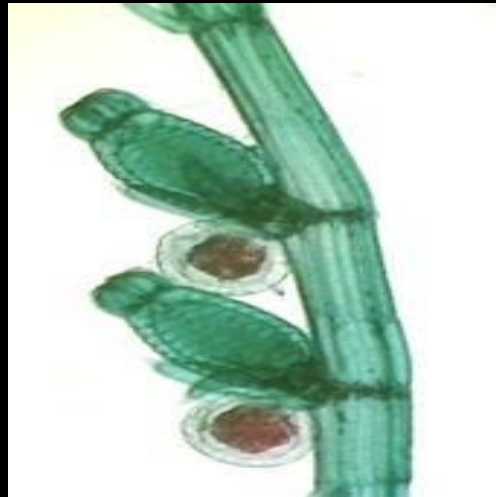
**Division:** Chlorophyta

**Class:** Chlorophyceae

**Order:** Charales

**Family:** Characeae

**Chara**



*Chara*

Division: Xanthophyta

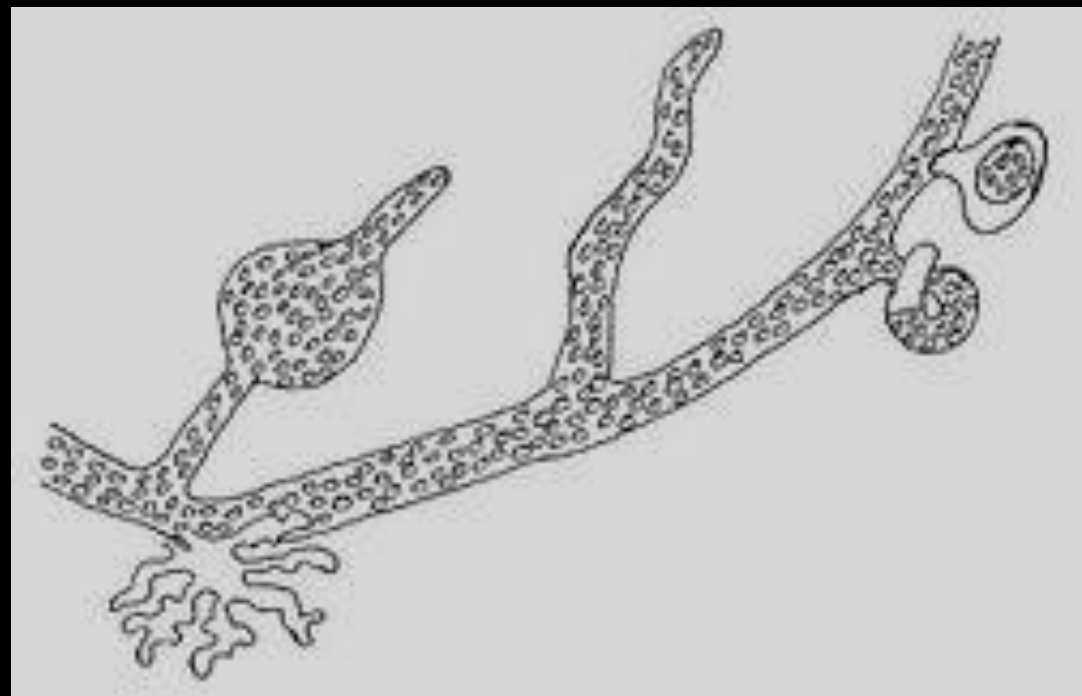
Class: Xanthophyceae

Order: Vaucheriales

Family: Vaucheriaceae

Vaucheria







# Vaucheria



A, B after Ertter et al. (1997)  
 C © Y. Tuzi, see <http://pep99.vtlib.org/pep99/pep99.html>

