

384 BOT

Lab .6

الطحالب الخضراء Chlorophyta

الطحالب الكارية Charophyta

الطحالب الذهبية Xanthophyceae

Spirogyra

Kingdom: Protista

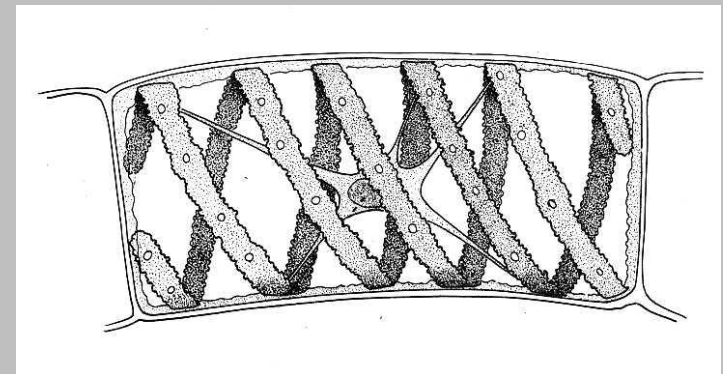
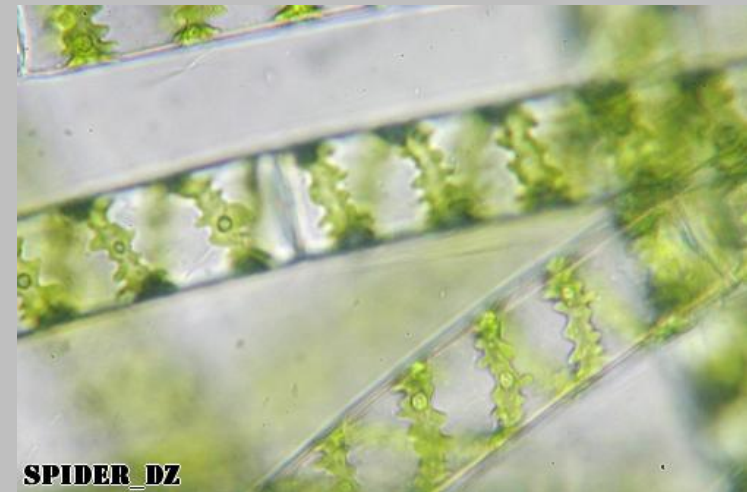
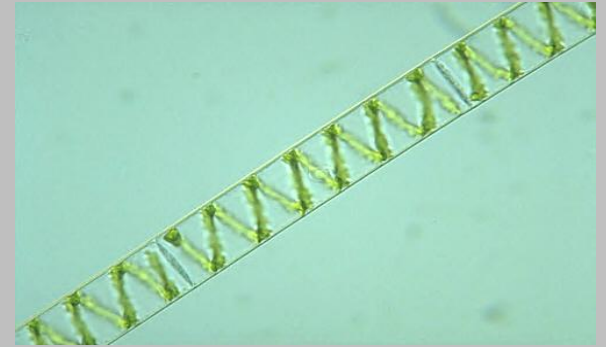
Division: Chlorophyta

Class: Chlorophyceae

Order: Zygnematales

Family: Zygnemataceae

Ex: Spirogyra



Zygnema

Kingdom: Protista

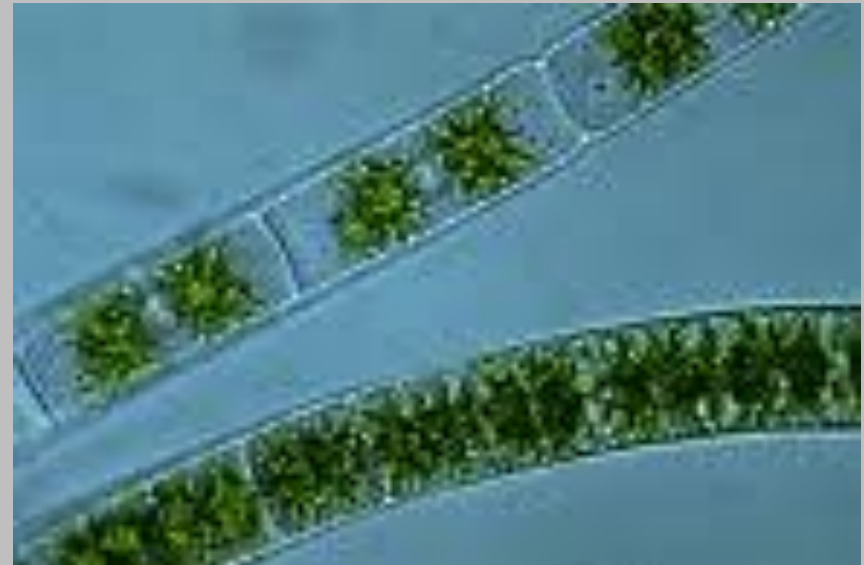
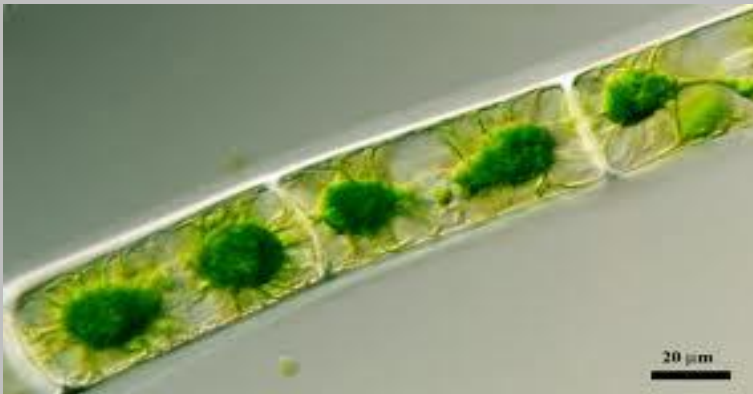
Division: Chlorophyta

Class: Chlorophyceae

Order: Zygnematales

Family: Zygnemataceae

Ex: Zygnema



Cladophora

Kingdom: Protista

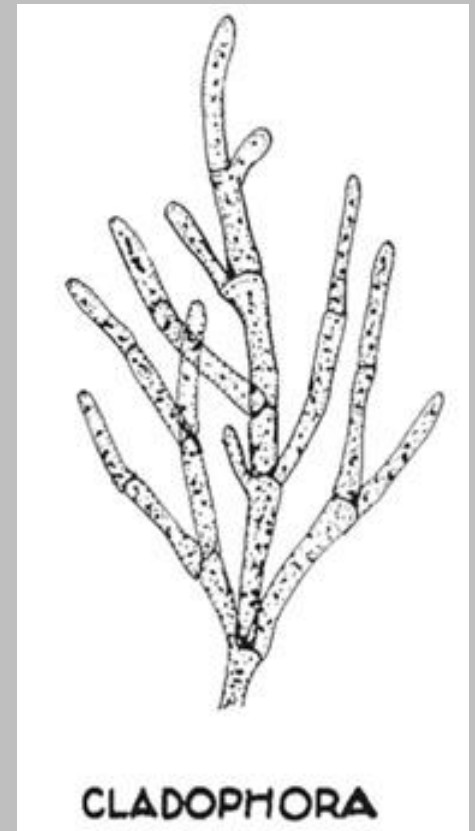
Division: Chlorophyta

Class: Chlorophyceae

Order: Cladophorales

Family: Cladophoraceae

Ex: Cladophora



Chara

Kingdom: Protista

Division: Charophyta

Class: Charophyceae

Order: Charales

Family: Characeae

Ex: Chara



Vaucheria

Kingdom: Protista

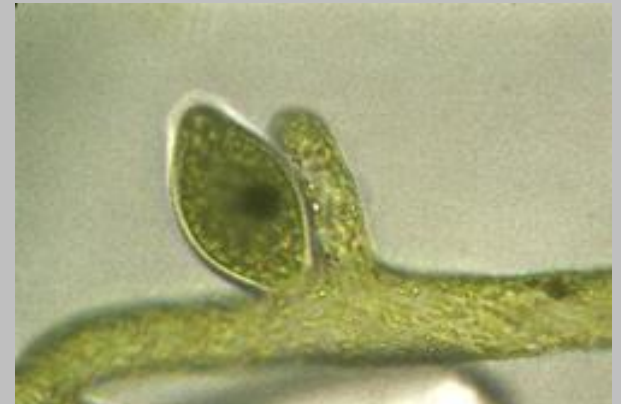
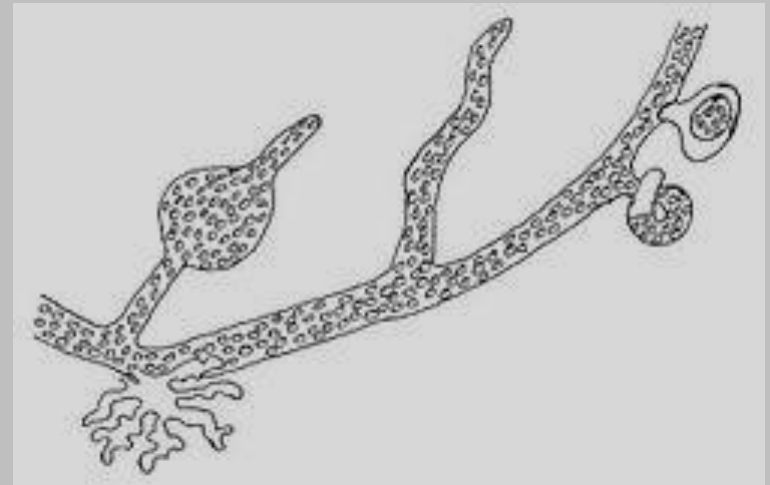
Division: Xanthophyta

Class: Xanthophyceae

Order: Vaucheriales

Family: Vaucheriaceae

Ex: Vaucheria





A, after Empson et al. (1997)
 C © Y. Tsukol, see http://pep99.vil.ihs.ac.uk/Photo_archive.html

