

Saprophytic Fungi (air contamemnat fungi)

Mrs: OHOUD ALHUM Aidan

Lecturer , clinical laboratory department ,
KSU

Saprophytic Fungi

- Saprophytic fungi feed on organic matter e,g: plant and animal remains
- Rapid growth (within 3 days) but some species are slower growing

Fungal colonies are described using the following terms:

◎ TEXTURE

- ◎ woolly ,cottony,
powdery ,fluffy ,silky,
velvety, etc...

◎ COLOR

- ◎ : black, brown , pink,
cinnamon, yellow
green, etc...

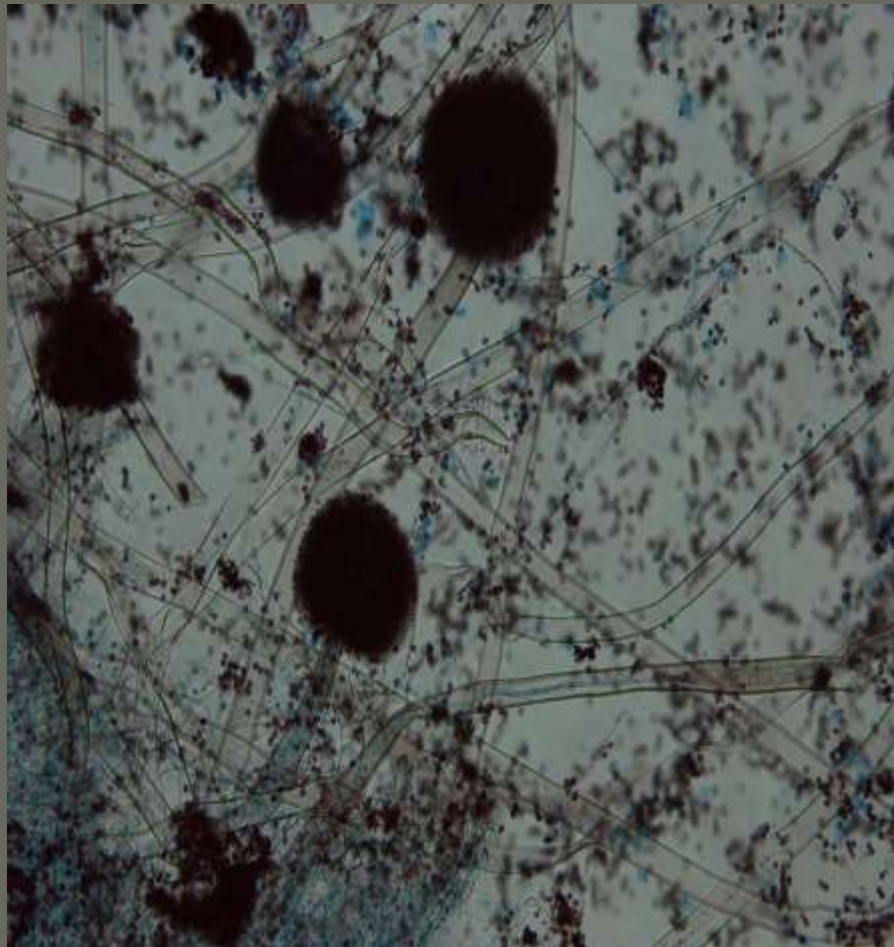
Aspergillus niger



* Colony is black powdery

Microscopic examination of saprophytic fungi

1- Aspergillus niger :



Aspergillus terreus

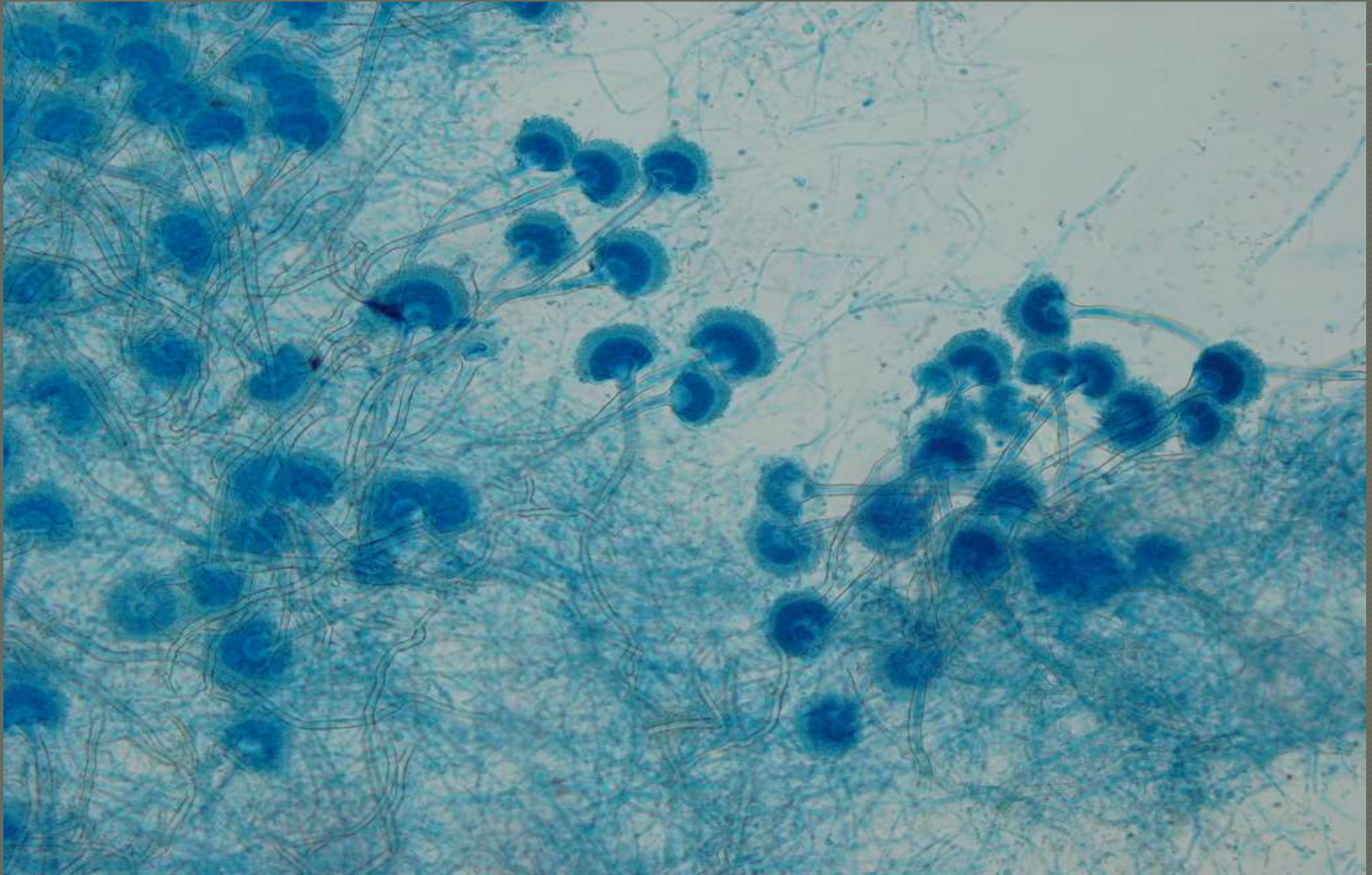


*colony velvety, brown, cinnamon in color.

Aspergillus terreus



Aspergillus terreus

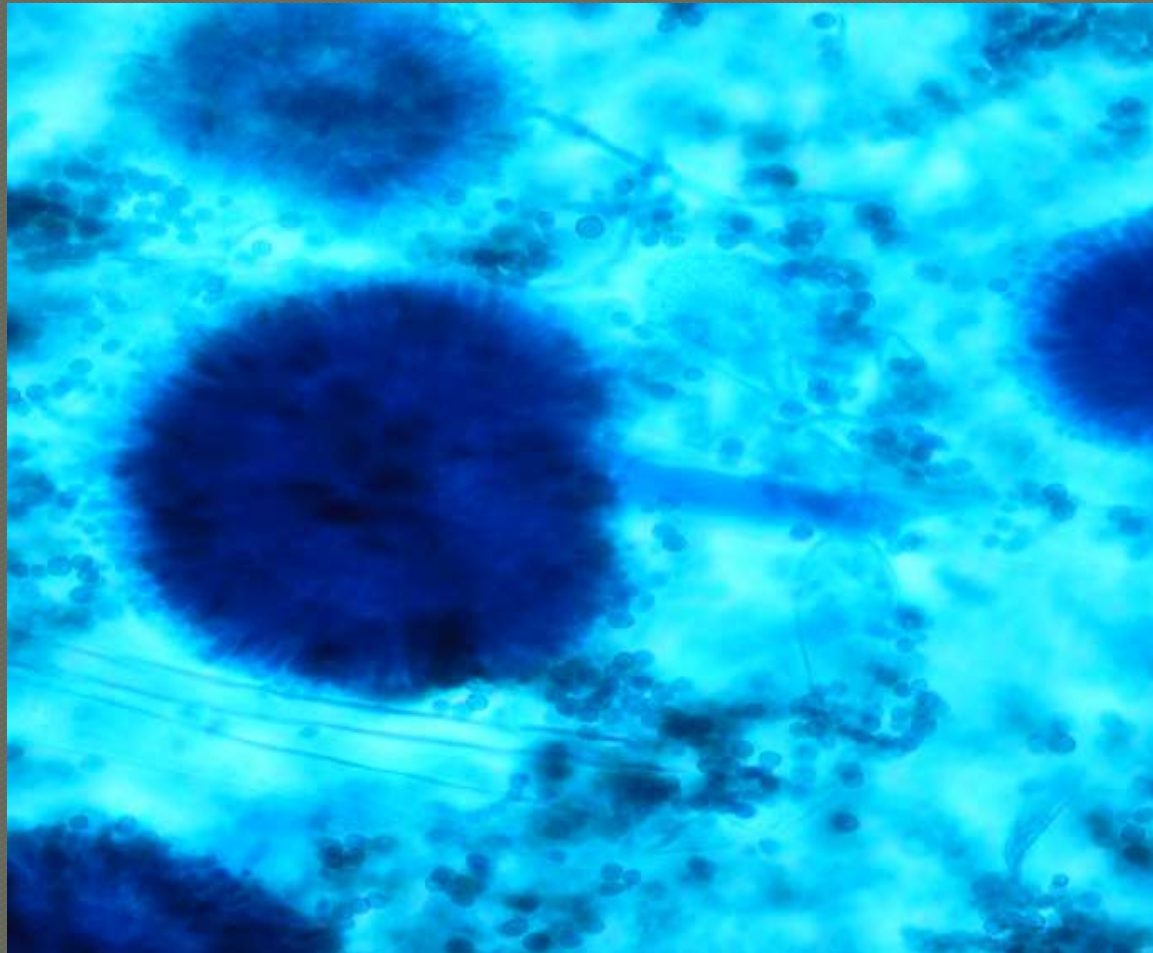


Aspergillus flavus



* Color of the colony is yellow to yellow green , velvety .

Aspergillus flavus



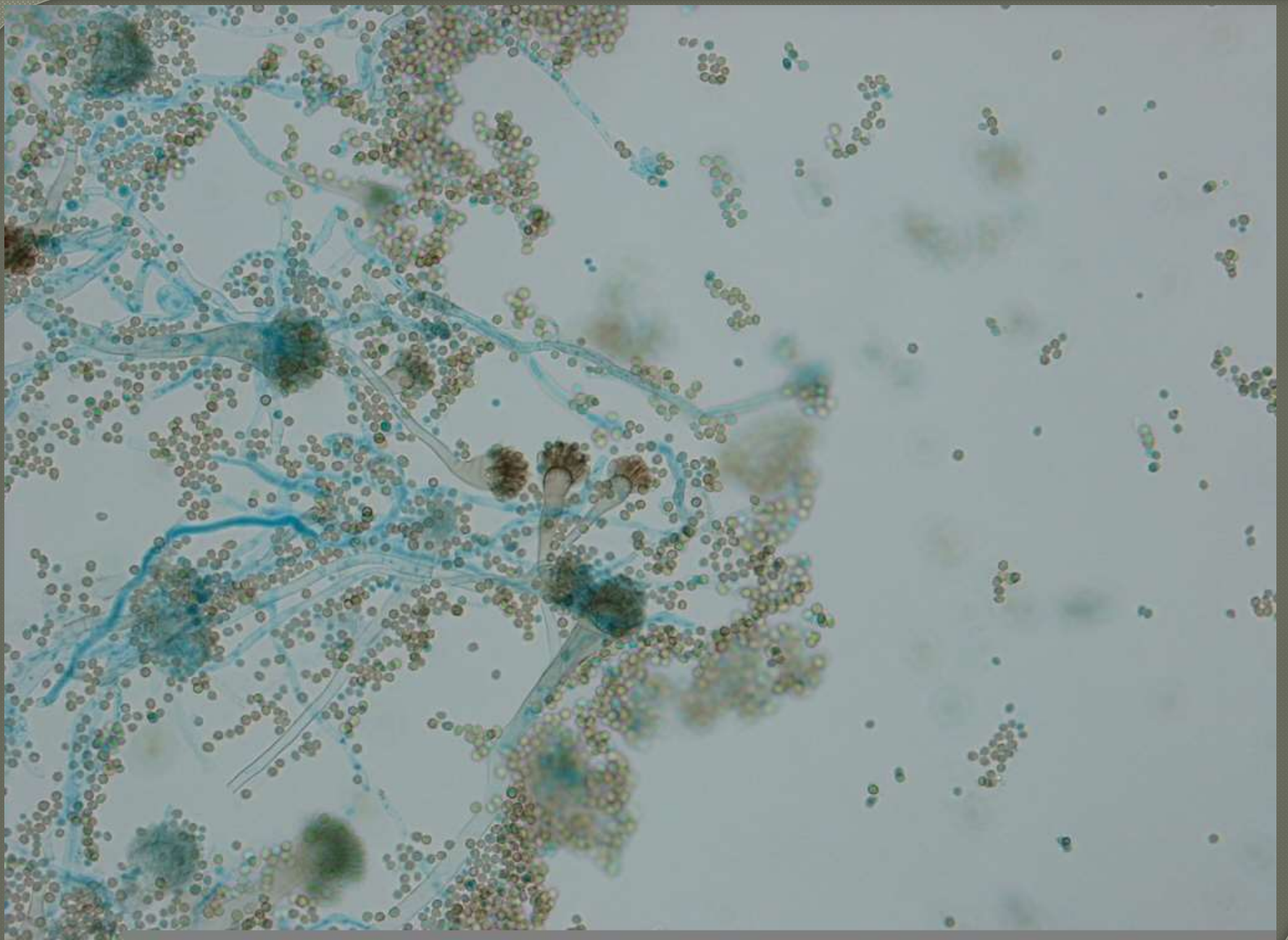
Aspergillus fumigatus



*color of the colony is green or green gray , velvety or powdery

Aspergillus fumigatus





Rhizopus sp.



*colonies are cottony and push up against under the lid of the Petridish

Rhizopus sp.



Fusarium sp.



Colony morphology at first white and cotton often quickly develops a pink or violet colour

Fusarium sp.

P: 147



Alternaria sp.



*colony dark gray-brown or green to black.

Alternaria sp.

*



Bipolaris Sp.



*colonies brownish in color. cottony

Bipolaris Sp.



Curvularia sp

(wooly colonies , dark in colore



Curvularia sp



Penicillium sp.



*colony green to yellow green and velvety to powdery.

Penicillium sp.

P:139

