

SUPEFICIAL MYCOSES

Mrs . Ohoud S. alhumaidan

Superficial Mycosis:

Fungal infections of the outer most area in the human body ◆

Effect: the outer most layer of the skin (epidermis) and Hair shaft . ◆

SUPERFICIAL MYCOSES

Superficial infections:

- 1- Pityriasis versicolor(comments one)
- 2- Tinea nigra
- 3- White piedra
- 4- black piedra

Prepared by :
Mrs. Ohoud Saud Al-Humaidan

SUPEFICIAL MYCOSES

1- *Pityriasis versicolor*:

* it is a superficial infection infecting the dead tissue of the stratum corneum (skin)

Etiological agent is : •

Malassezia furfur (lipophilic yeast)

Clinical Material: Skin scrapings. •

Pityriasis versicolor

Direct Microscopy:

(10% KOH) :

Check mycology manual

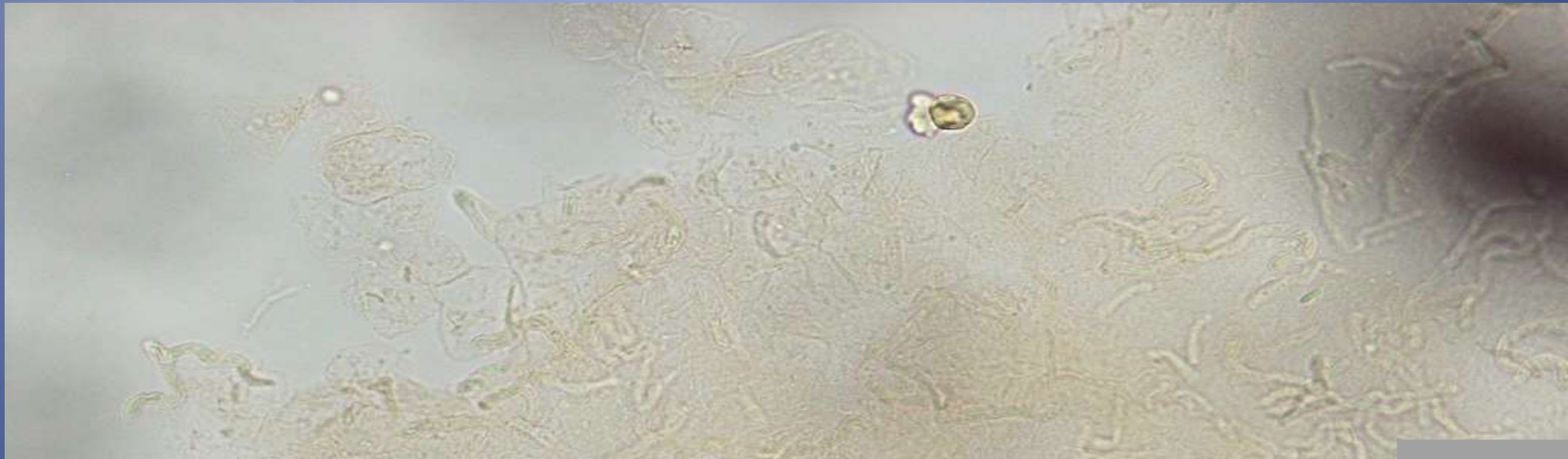
culture

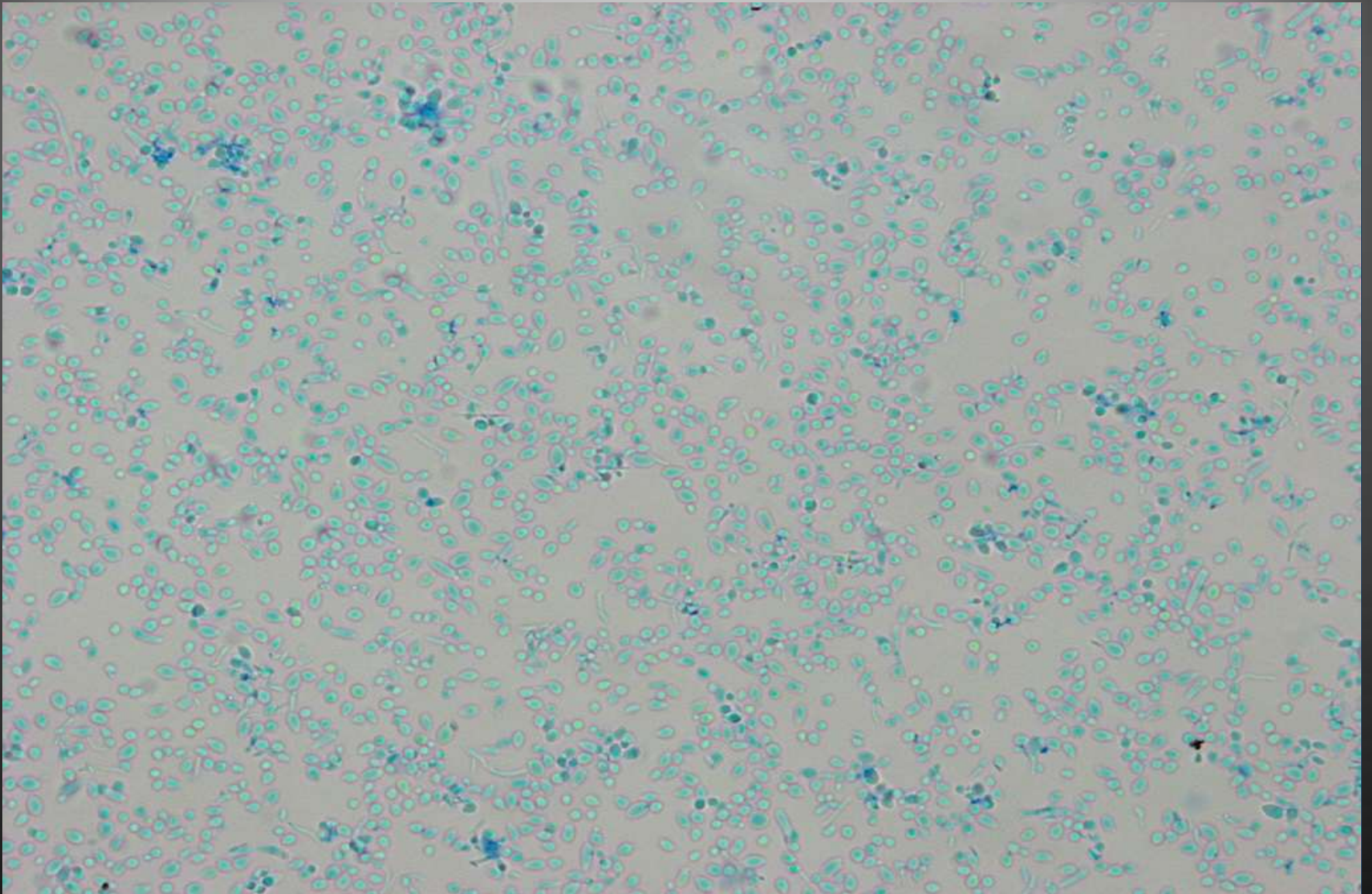
LPCB we will see :

Check mycology manual

Pityriasis versicolor

Microscopic examination of a skin scrapings mount preparation in 10% KOH





Yeast cell with LPCB

SUPERFICIAL MYCOSES

2- Tinea nigra:

It is superficial fungal infection which affect the palm of the hand or sole of the feet. ◆

◆ Etiological agent: Exophilia werneckii ◆

Clinical Material: Skin scrapings. ◆

Tinea nigra

Direct Microscopy

(10% KOH) :

Check mycology
manual

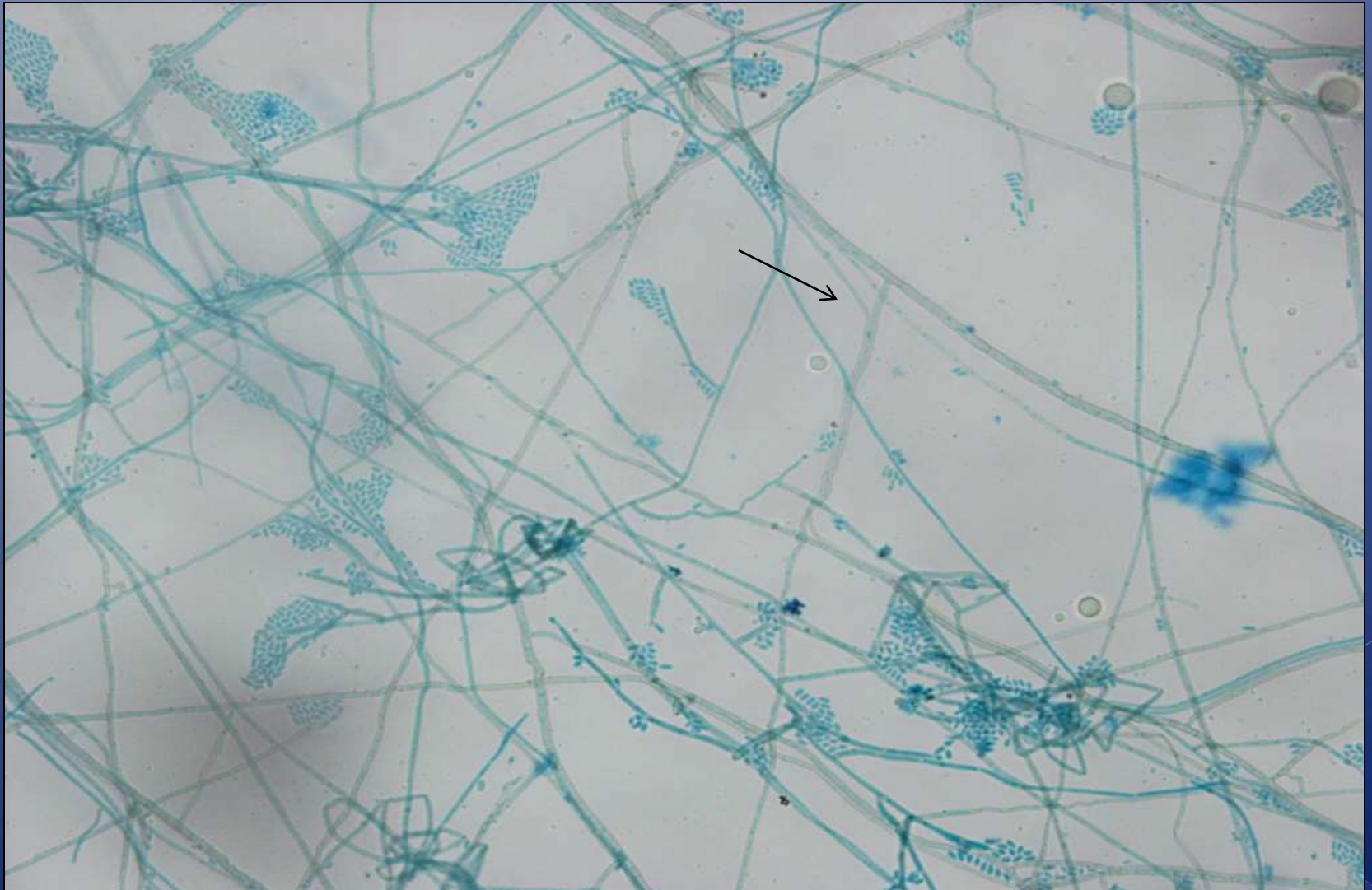
Culture

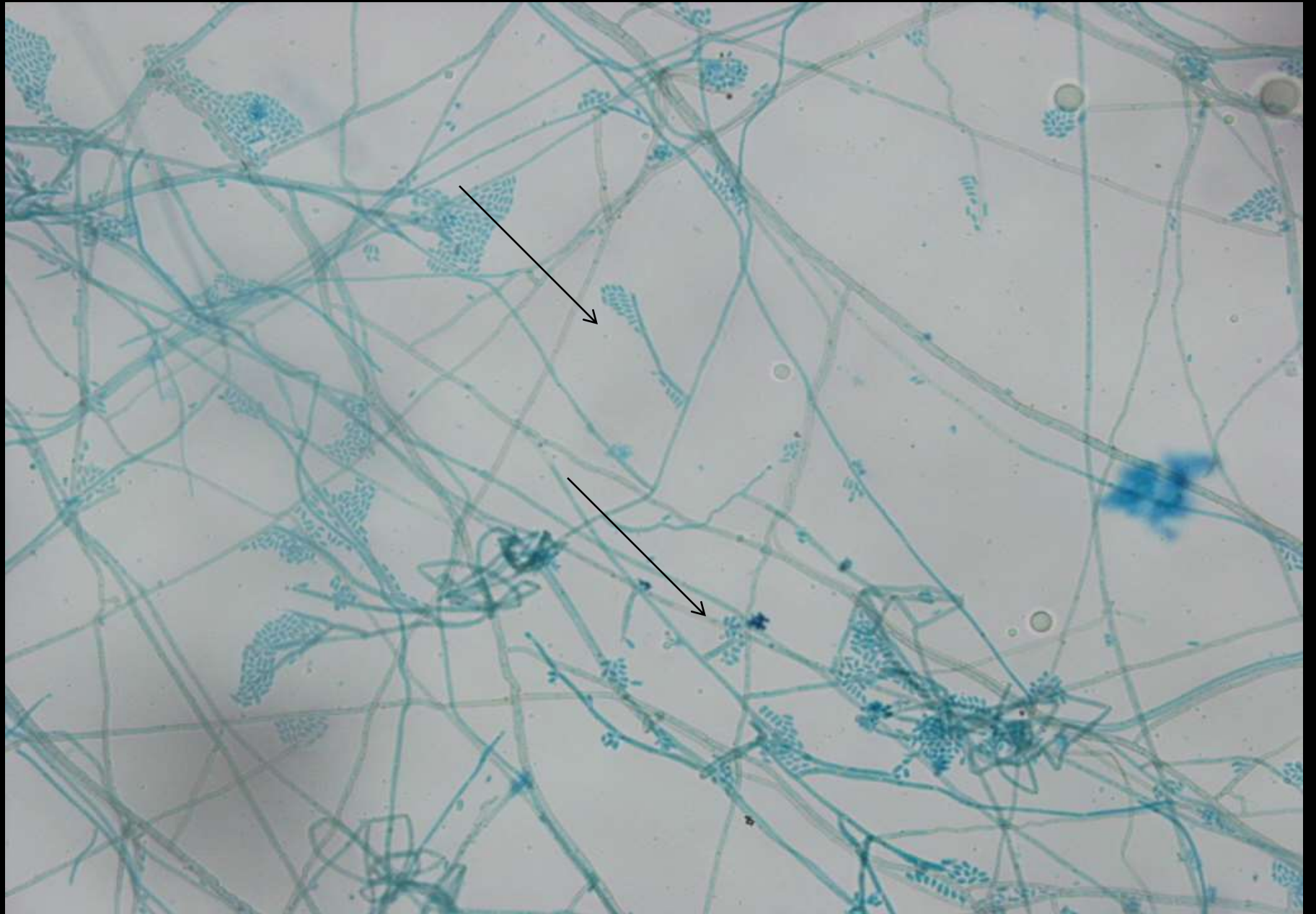
(LPCB)-

Check mycology manual ■

Tinea nigra

LPCB mount of Exophiala SP.





SUPERFICIAL MYCOSES

3- white piedra:

***This is the disease of hair characterized by forming white colored, nodules around hair shaft.**

***etiological agent: Trichosporon beigelii**

clinical Material:

hairs with white soft nodules present on the shaft

white piedra

Direct Microscopy

(10% KOH) :

Check mycology manual

Culture

(With LPCB

Check mycology manual -

white piedra



