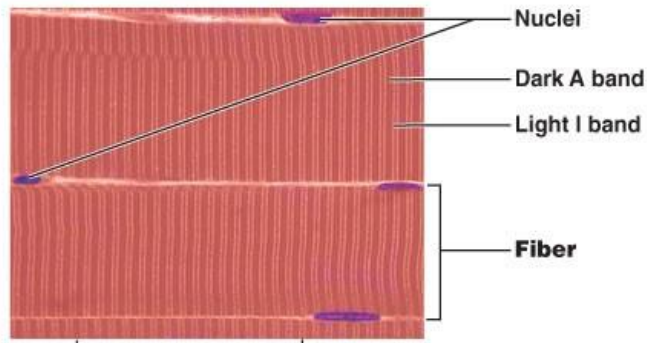
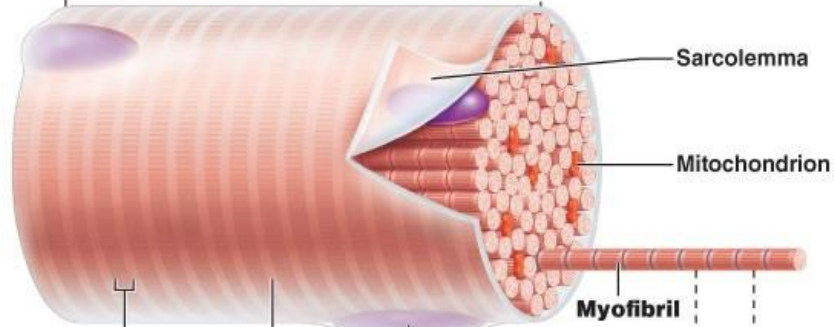


Microscopic Muscular structure

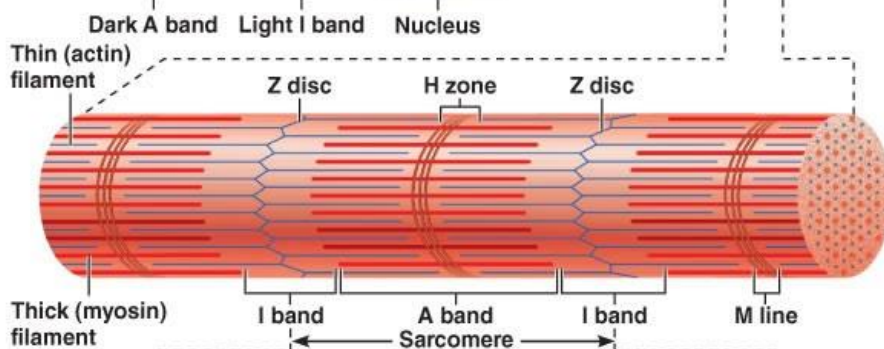
(a) Photomicrograph of portions of two isolated muscle fibers (700x). Notice the obvious striations (alternating dark and light bands).



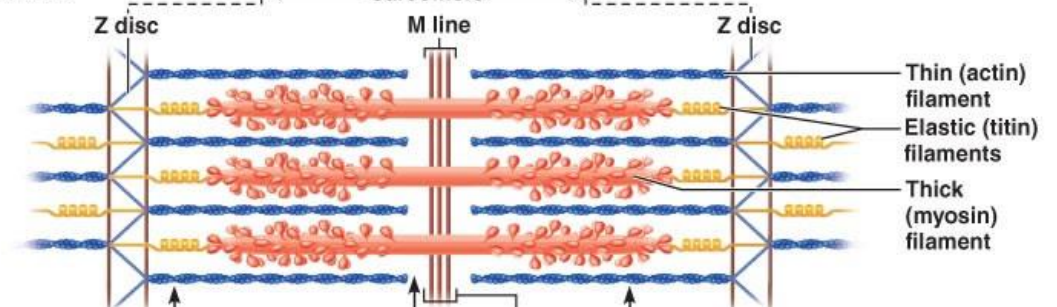
(b) Diagram of part of a muscle fiber showing the myofibrils. One myofibril extends from the cut end of the fiber.



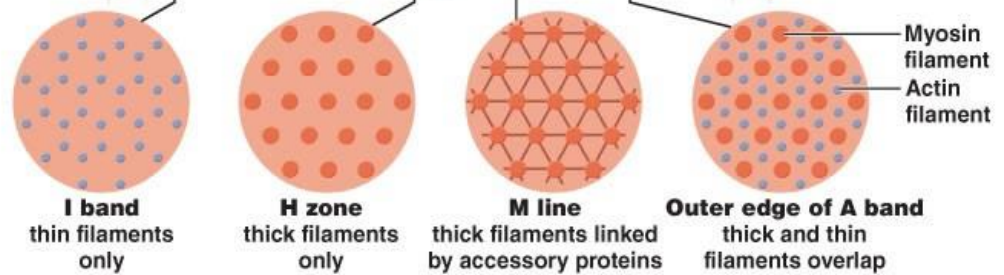
(c) Small part of one myofibril enlarged to show the myofilaments responsible for the banding pattern. Each sarcomere extends from one Z disc to the next.



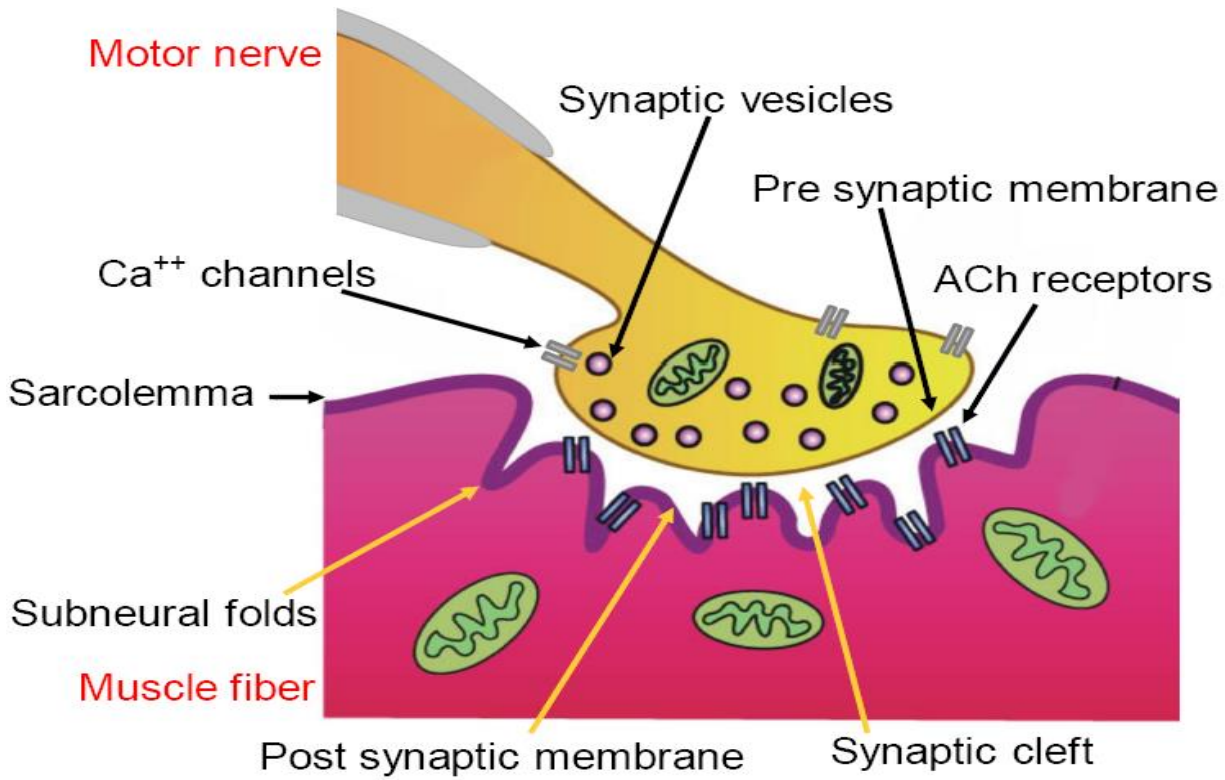
(d) Enlargement of one sarcomere (sectioned lengthwise). Notice the myosin heads on the thick filaments.



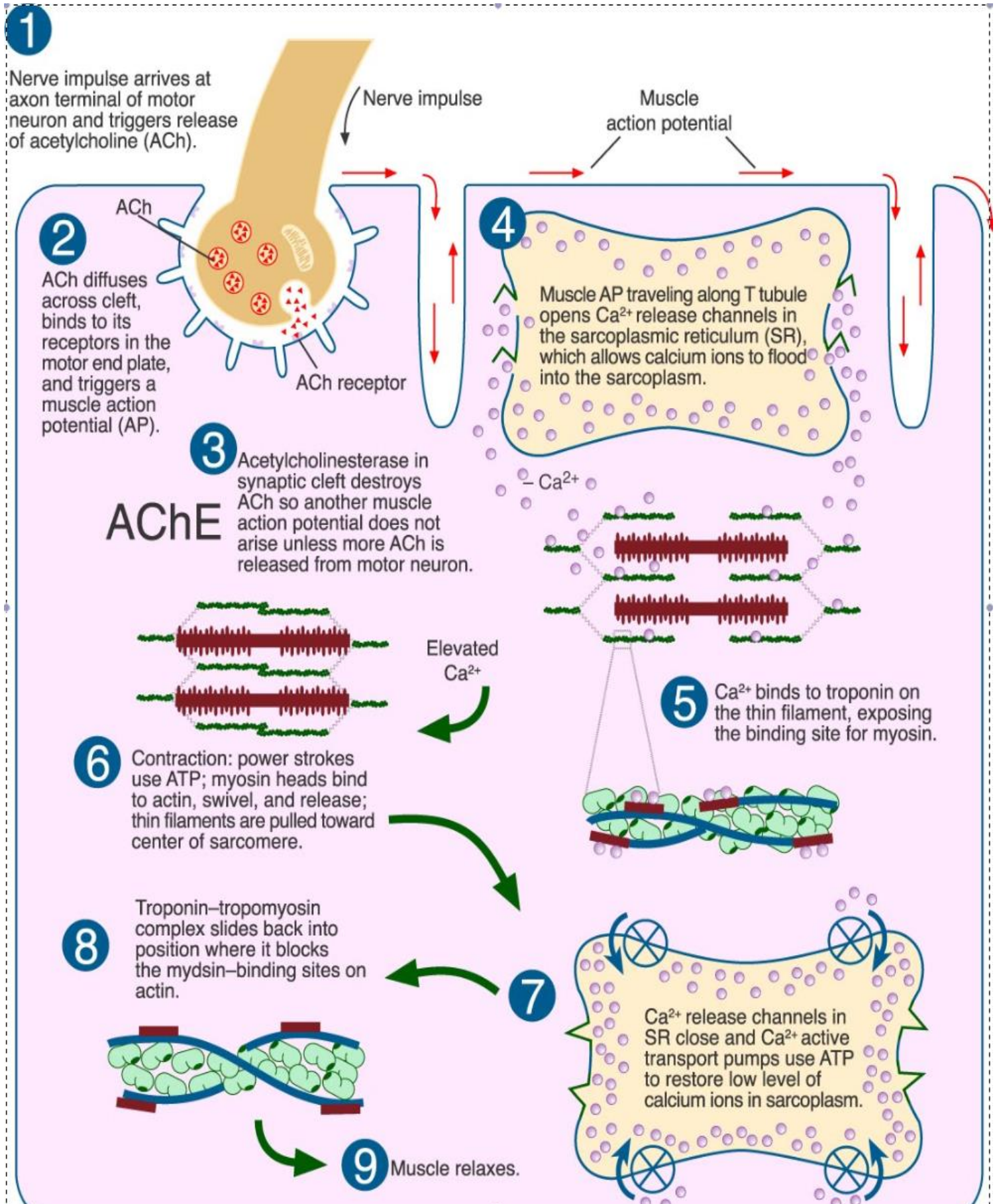
(e) Cross-sectional view of a sarcomere cut through in different locations.



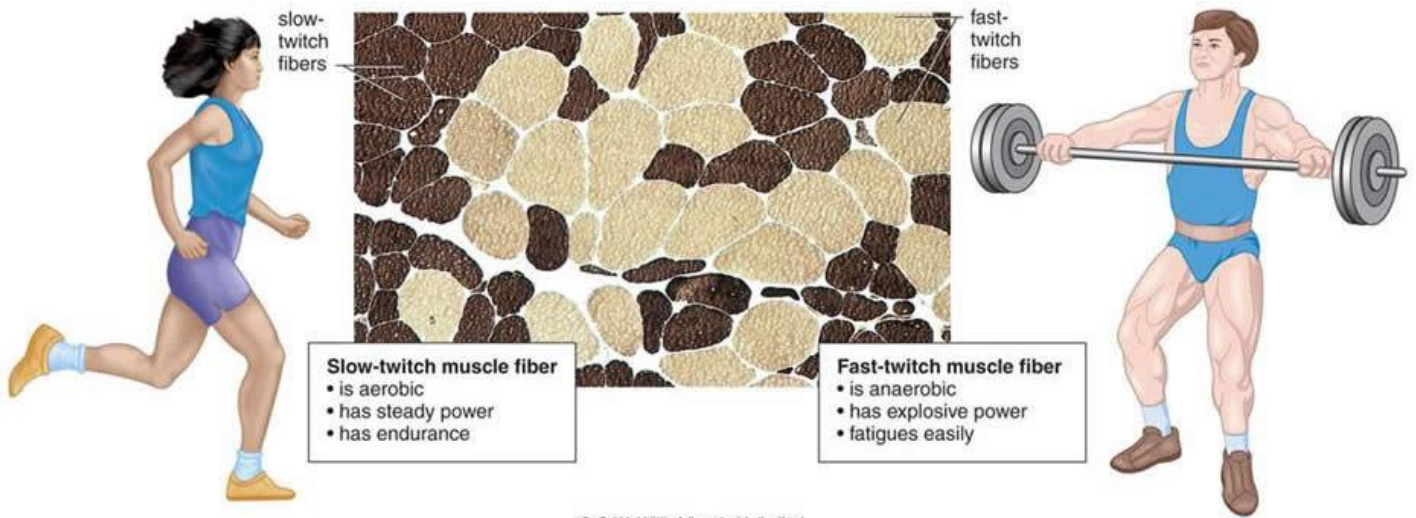
Neuromuscular junction



Mechanism of muscle contraction – sliding theory.



Types of muscle fibres



© G.W. Willis/Visuals Unlimited

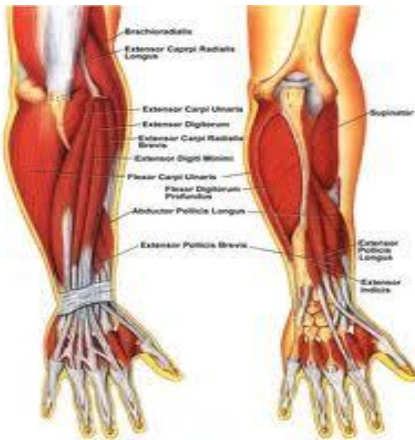
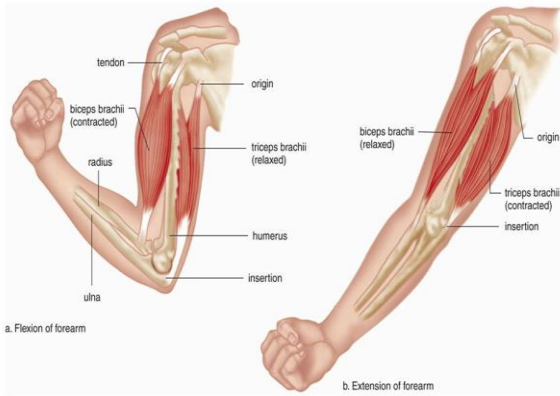
Copyright © The McGraw-Hill Companies, Inc. Permission required for reproduction or display.

Types of skeletal muscles contraction

1. Prime movers (agonists)
2. Antagonist
3. Synergists
4. Fixators

Fig. 7.10

Copyright © The McGraw-Hill Companies, Inc. Permission required for reproduction or display.



Recommended website

<http://classes.midlandstech.edu/carterp/Courses/bio110/chap07/chap07.html>

<http://mda.org/disease/myasthenia-gravis>