



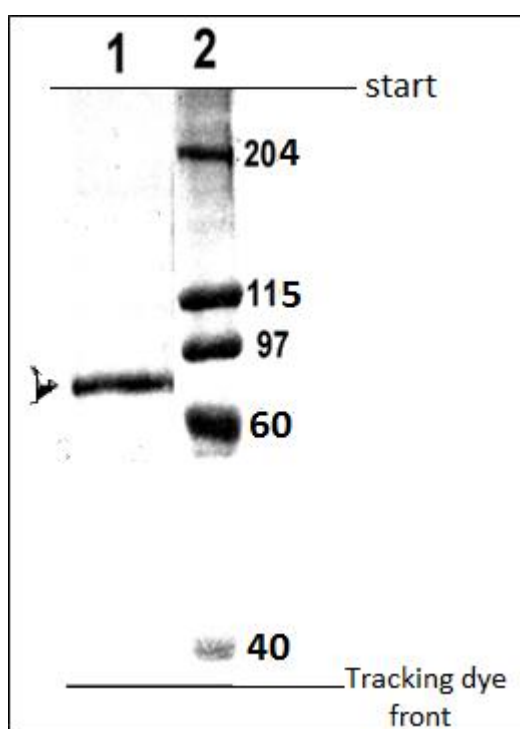
## BCH 462 - Homework

### SDS-PAGE

Name:

I.D.:

Q1-Determine the molecular weight for the protein sample in (lane 1), using the following information and draw the standard curve of known proteins molecular weights:



Note that:

[1] Protein sample with unknown molecular weight.

[2] Standard of known proteins molecular weights, see the following table:

The following table with the information which will help you draw the standard curve

Mw (Da)	Log Mw	Rf
204000		
115000		
97000		
60000		
40000		

The molecular weight of the protein sample in (Lane 1) is ?

**Q2: Why is the pH of the stacking gel different from the resolving gel?**

**Q3: Why glycine should be added in the running buffer?**