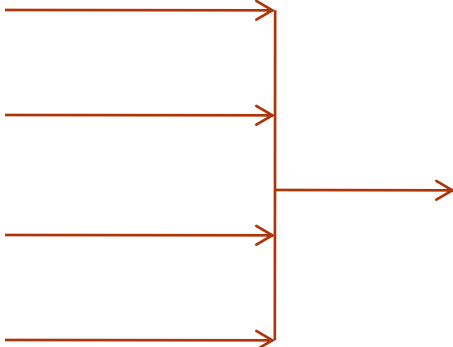
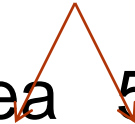


بسم الله الرحمن الرحيم

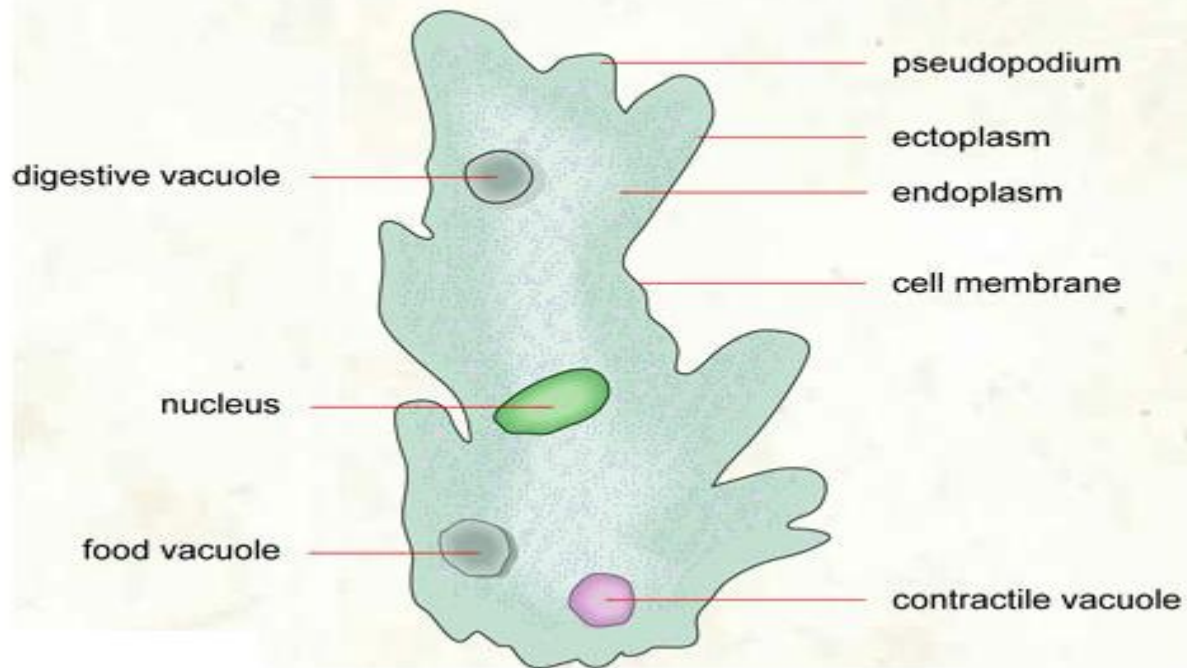
Cell Structure

Kingdoms

- 1-Animalia
 - 2-Plantae
 - 3-Fungi
 - 4-Protista
- 
- Eukaryota
- 5-prokaryota(Monera)
 - 5-1 Archaea
 - 5-2 Bacteria(staphylococcus)
- 

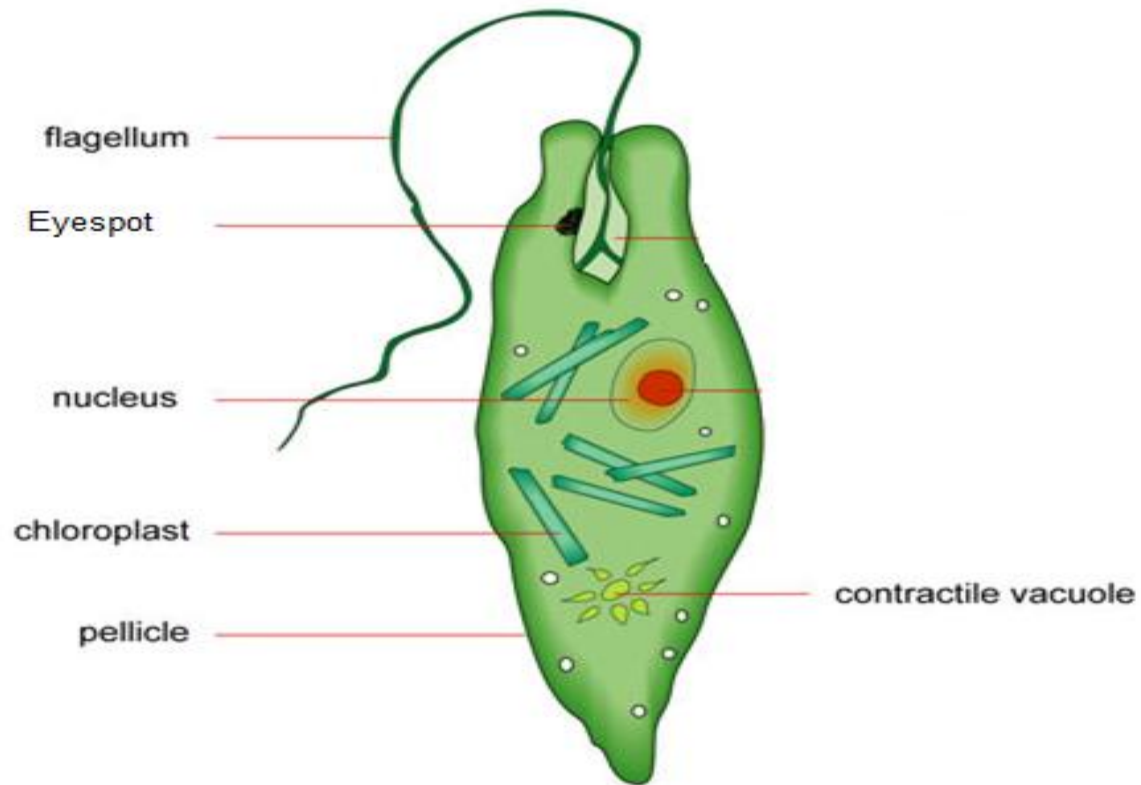
- Kingdom: Protista
- Subkingdom: Protozoa
- A-Phylum: sarcomastigophora
- 1- subphylum: Sarcodina
- Species: *Amoeba proteus*

STRUCTURE OF AN AMOEBA

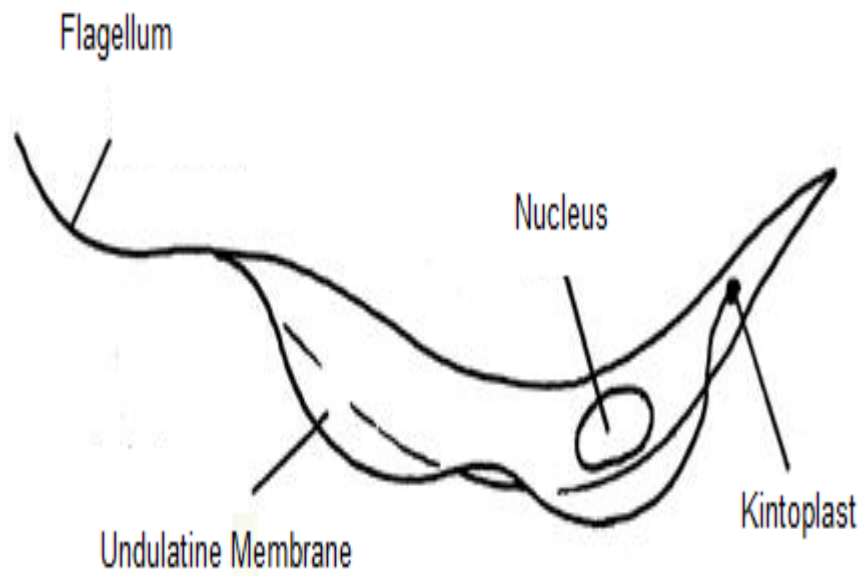


- 2- Subphylum: Mastigophora
- Genus:
- 2-1 Euglena
- 2-2 Trypanosoma

STRUCTURE OF A EUGLENA



Structure of Trypanosoma



- B-Phylum: ciliophora
- Species:
- Paramecium Caudatum

Structure of Paramecium

