

Routing

Static Routing

RIP

EIGRP

Single Area OSPF

Determine IP Routes

- Routing :

How to determine the best route to destination

What Is Routing?

Cisco.com

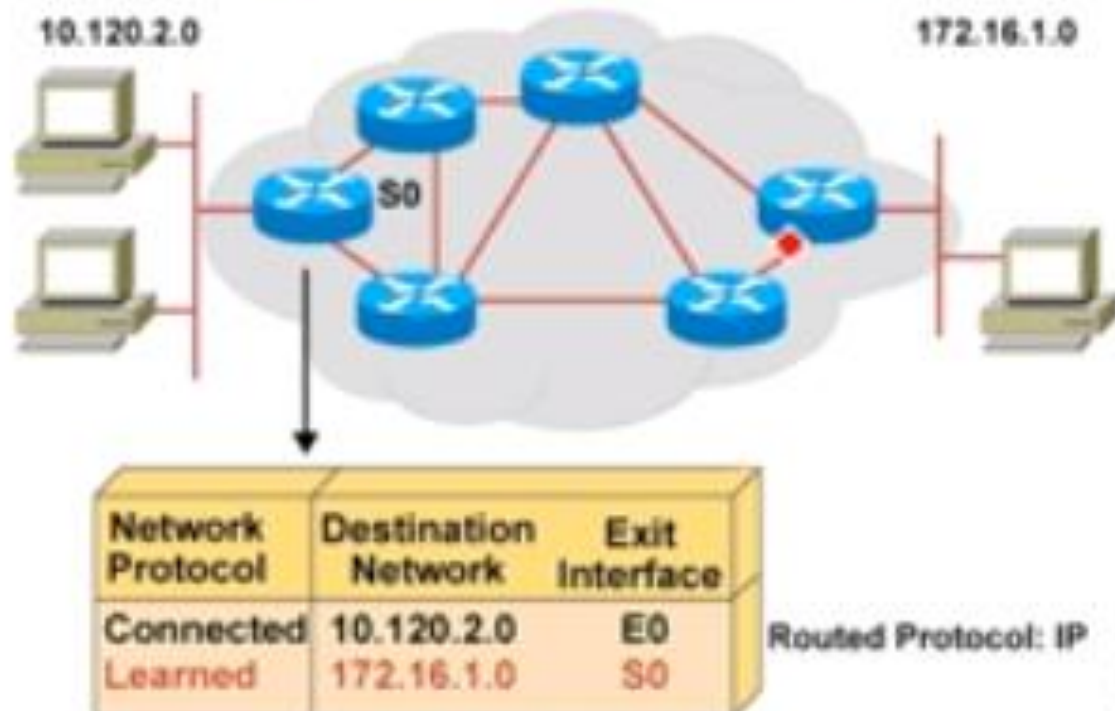


To route, a router needs to do the following:

- Know the destination address
- Identify the sources it can learn from
- Discover possible routes
- Select the best route
- Maintain and verify routing information

What Is Routing? (Cont.)

Cisco.com



- Routers must learn destinations that are not directly connected.

Identifying Static and Dynamic Routes

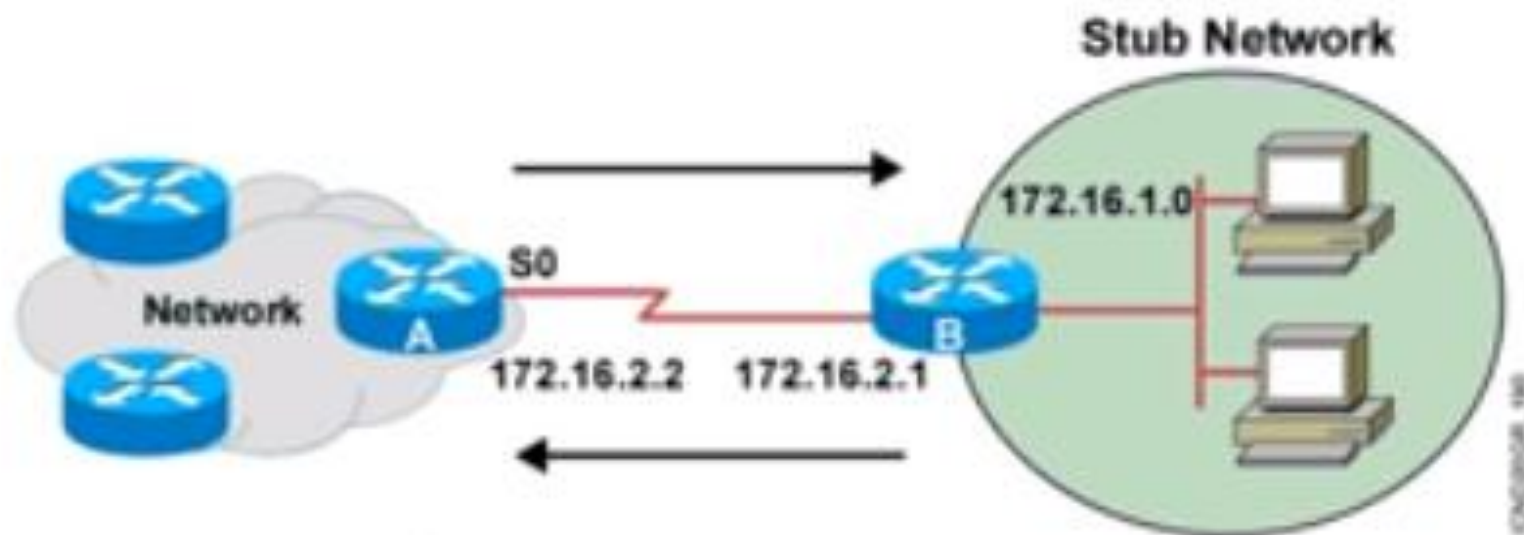
Static Route

- Uses a route that a network administrator enters into the router manually

Dynamic Route

- Uses a route that a network routing protocol adjusts automatically for topology or traffic changes

Static Routes



- Configure unidirectional static routes to and from a stub network to allow communications to occur.

Static Route Configuration

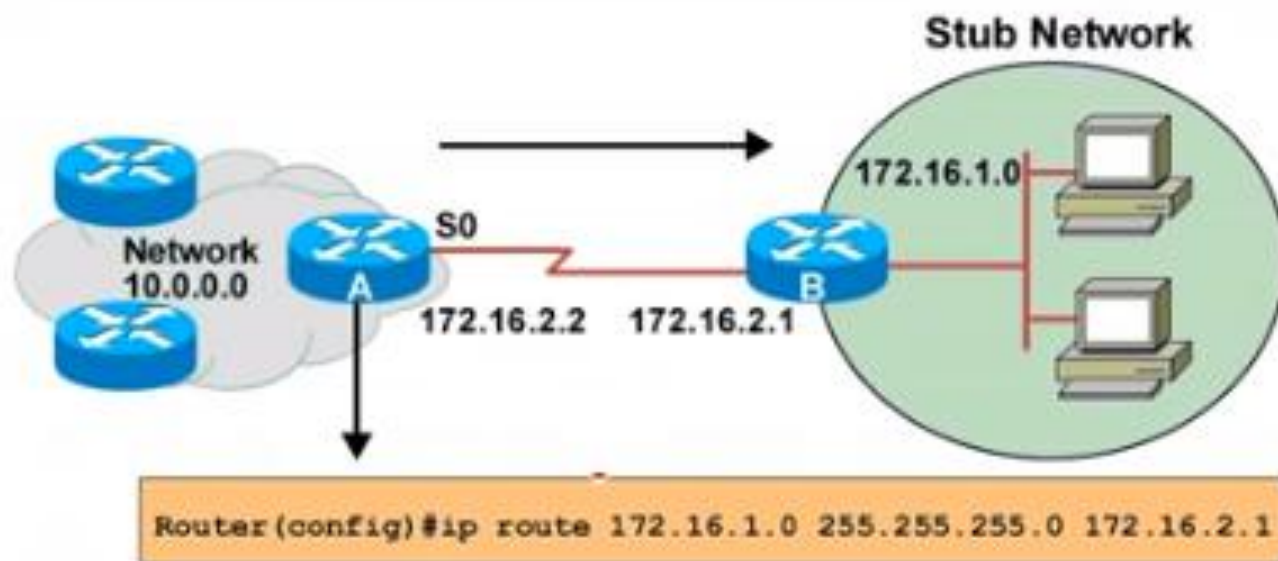
Cisco.com

```
Router(config)#ip route network [mask]  
[address | interface]
```

- Defines a path to an IP destination network or subnet or host

Static Route Example

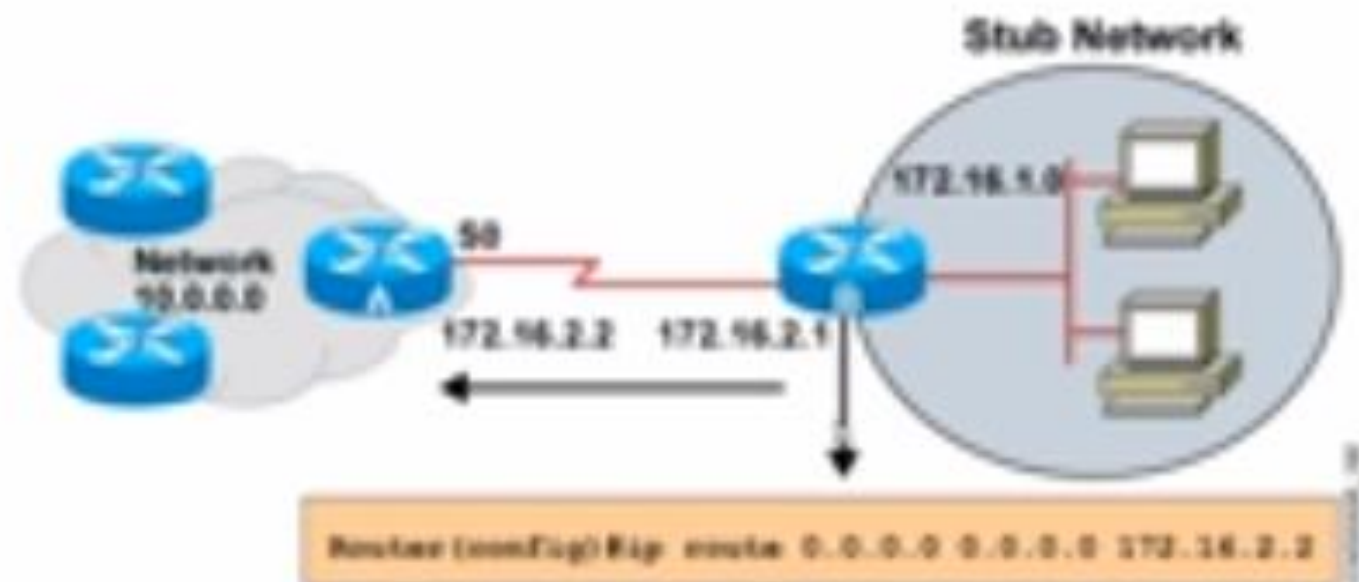
Cisco.com



- This is a unidirectional route. You must have a route configured in the opposite direction.

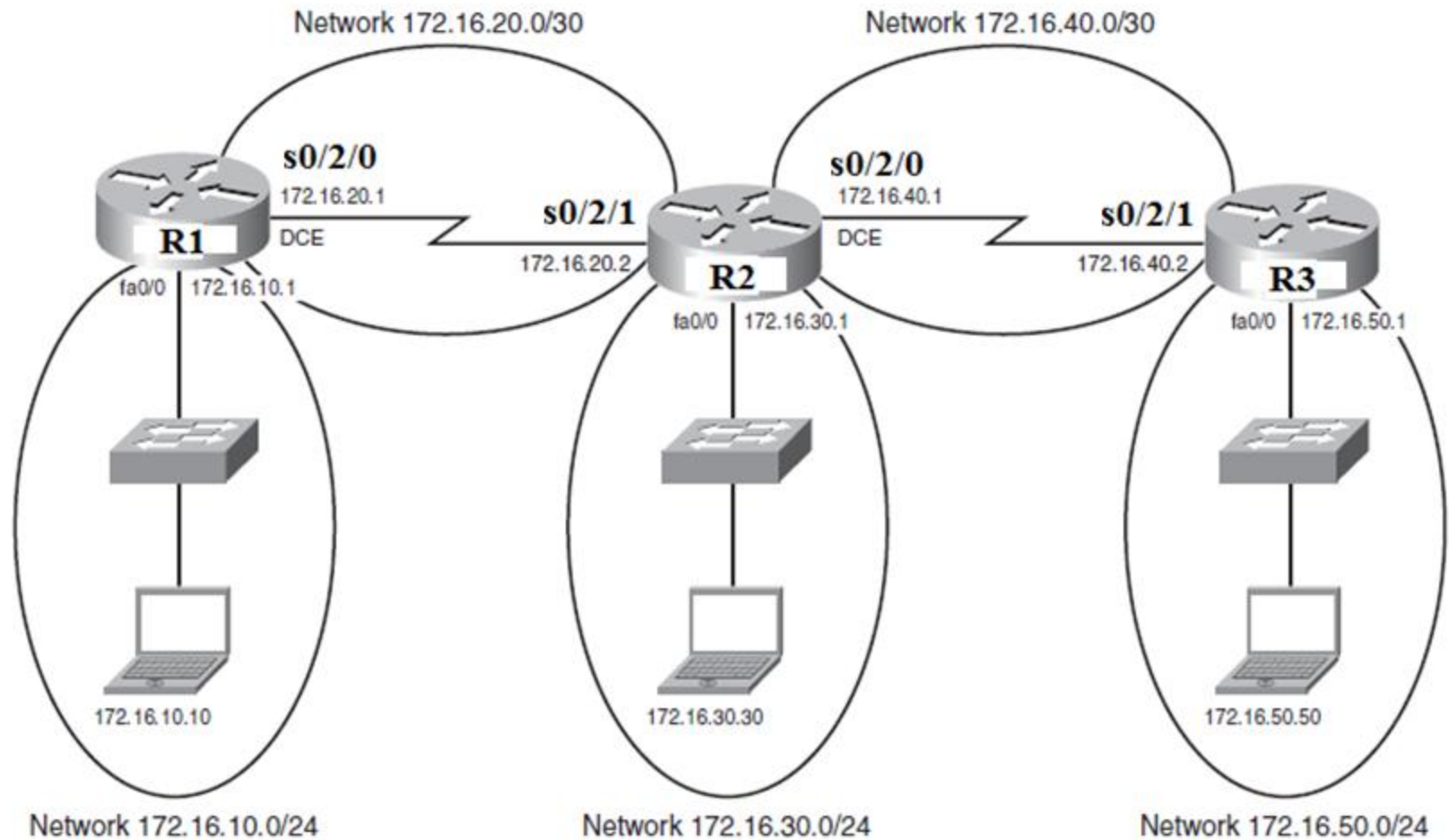
Default Routes

Cisco.com



- This route allows the stub network to reach all known networks beyond router A.

Network Topology for Static Route Configuration



Router R1

R1 >enable	Moves to privileged mode
R1 #configure terminal	Moves to global configuration mode
R1 (config)#ip route 172.16.30.0 255.255.255.0 172.16.20.2	Configures a static route using the next-hop address
R1 (config)#ip route 172.16.40.0 255.255.255.0 172.16.20.2	Configures a static route using the next-hop address
R1 (config)#ip route 172.16.50.0 255.255.255.0 172.16.20.2	Configures a static route using the next-hop address
R1 (config)#exit	Moves to privileged mode
R1 #copy running-config startup-config	Saves the configuration to NVRAM

Router R2

R2 > enable	Moves to privileged mode
R2 #configure terminal	Moves to global configuration mode
R2 (config)# ip route 172.16.10.0 255.255.255.0 serial 0/2/1	Configures a static route using the exit interface
R2 (config)# ip route 172.16.50.0 255.255.255.0 serial 0/2/0	Configures a static route using the exit interface
R2 (config)# exit	Moves to privileged mode
R2 #copy running-config startup-config	Saves the configuration to NVRAM

Router R3

R3 > enable	Moves to privileged mode
R3 #configure terminal	Moves to global configuration mode
R3 (config)# ip route 0.0.0.0 0.0.0.0 serial 0/2/1	Configures a static route using the default route
R3 (config)# exit	Moves to privileged mode
R3 #copy running-config startup-config	Saves the configuration to NVRAM