

# Types of Culture Media

## Simple

It used to Support the total flora of clinical specimen, And it can support most nonfastidious bacteria



Nutrient Agar



Peptone water

*Staphylococcus aureus*  
*Pseudomonas aeruginosa*  
*Proeius sp*

## Enriched

Addition to extra nutrien in the form blood, serum, egg eolk to a simple medium



Blood Agar

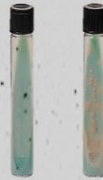


Chocolate Agar

Blood  
*Streptococcus sp*  
Chocolate  
*Haemophilus influenza*

## Selective

It allows the growth of certain types of organism, while inhibiting the growth of other organism



Lowenstein Jensen Agar

*Mycobacterium tuberculosis*

## Differential

It is used for detecting of microorganism and by molecular biologists to detect recombinant strains of bacteria



Blood Agar

Complete hemolysis  
Incomplete hymolysis  
No effect

contains inhibitors of certain bacteria such as  
: *Neisseria* and *Haemophilus*



Chocolate Agar

contains V factor and X factor

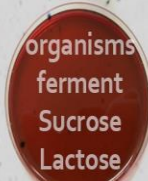
## Selective Differential

Some media considered as selective and differential media



MacConkey Agar

organisms ferment Lactose  
selective crystal violet



EMB Agar

organisms ferment Sucrose Lactose  
selective pH indecator dyes



Manitol Agar

organisms ferment manitol  
selective high NaCl 7.5%

## Transport

Allow organism to survive , so it is non-nutritive



Stuart's medium



Cary Blair medium



Virus transport medium

