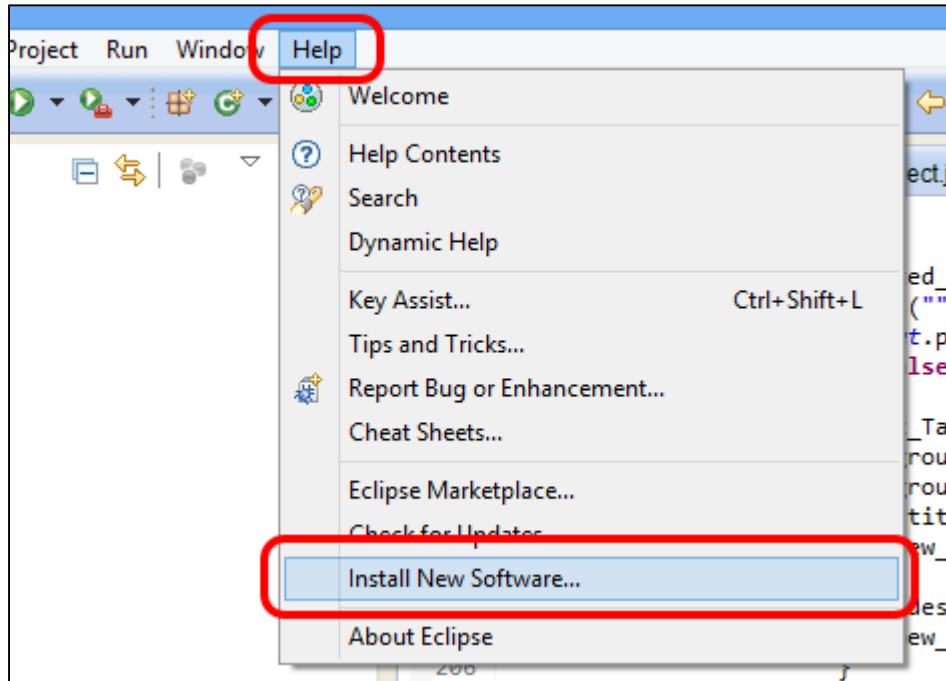


Web-CAT Plugin

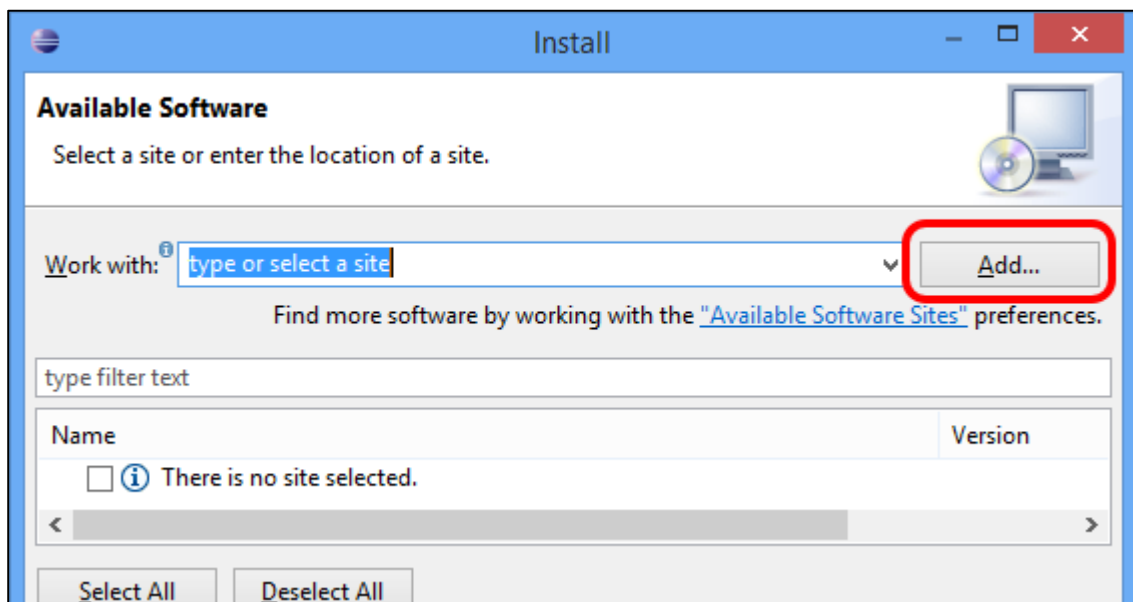
1. Installing the Web-CAT plugin

- **Open Eclipse.**

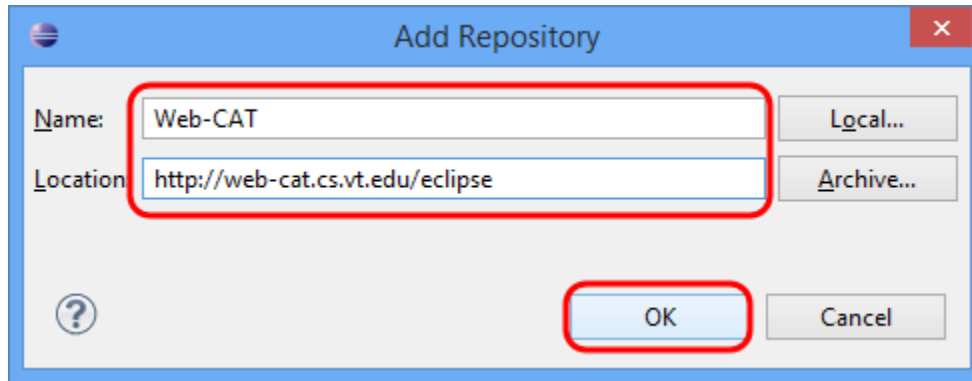
- **In Eclipse, click on Help > Install New Software... to open the Install window.**



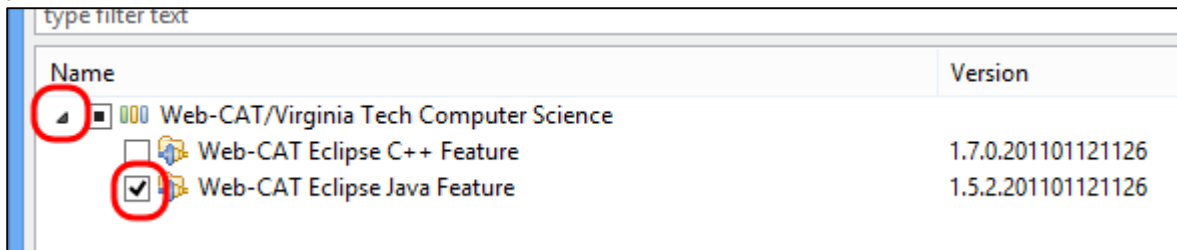
- **Click Add... in the Install window.**



- In the Add Repository window:
 - In the Name field, enter “Web-CAT”.
 - In the Location field, enter “http://web-cat.cs.vt.edu/eclipse”.
 - Then, click OK.

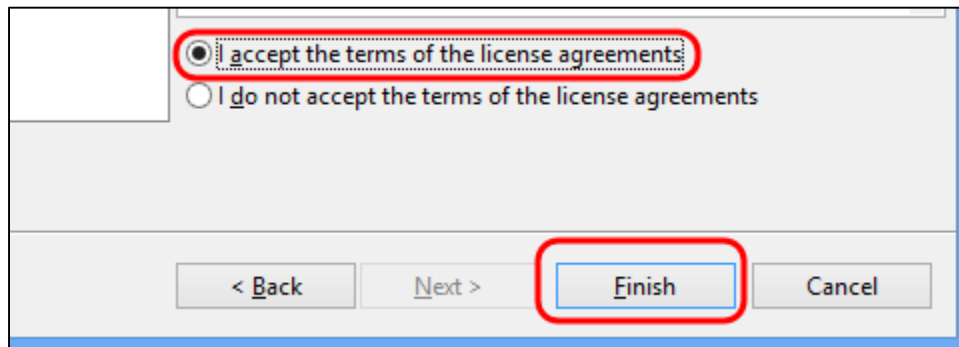


- Back to the Install window:
 - Wait until Web-CAT/Virginia Tech Computer Science item appear.
 - Expand the Web-CAT/Virginia Tech Computer Science item by clicking the white arrow next to it.
 - Check the Web-CAT Eclipse Java Feature item.
 - Then, click Next.

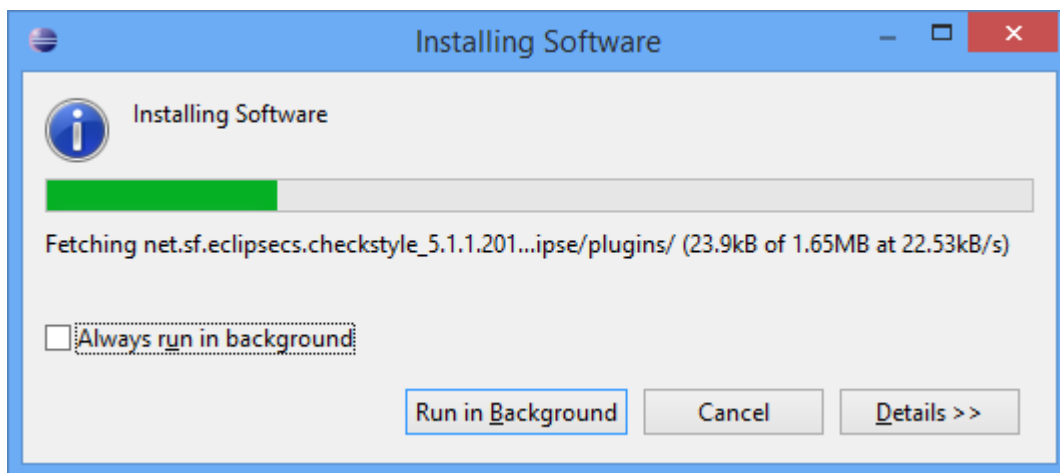


- It might take some time before going to the next screen.
- Once it is done, click Next.

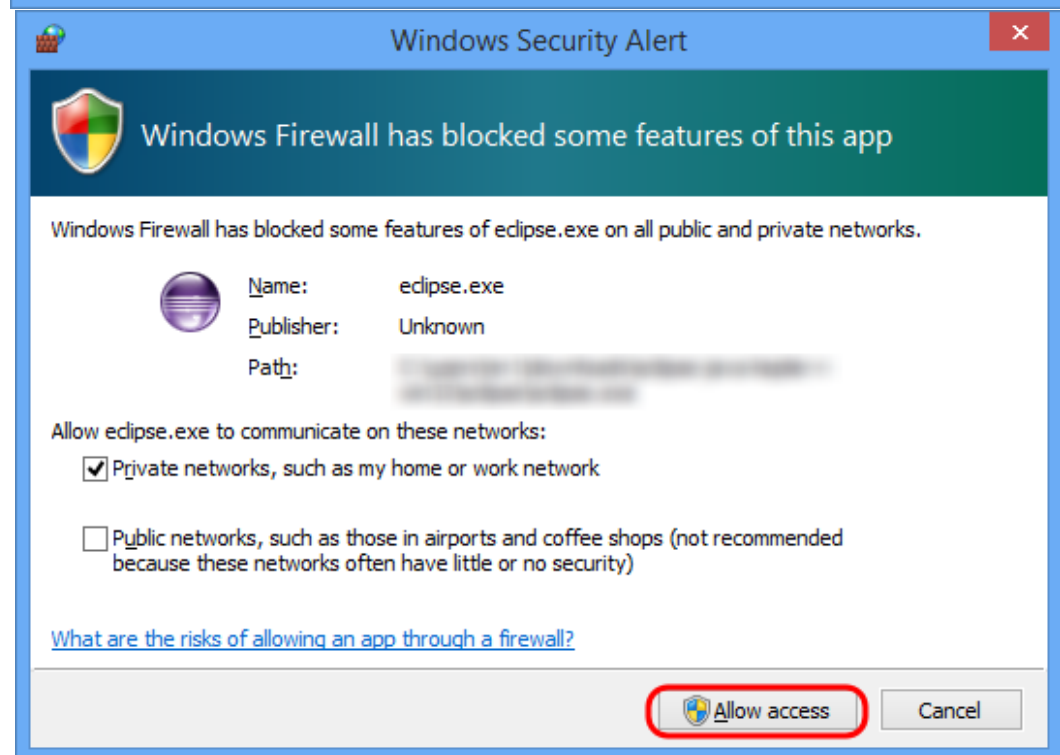
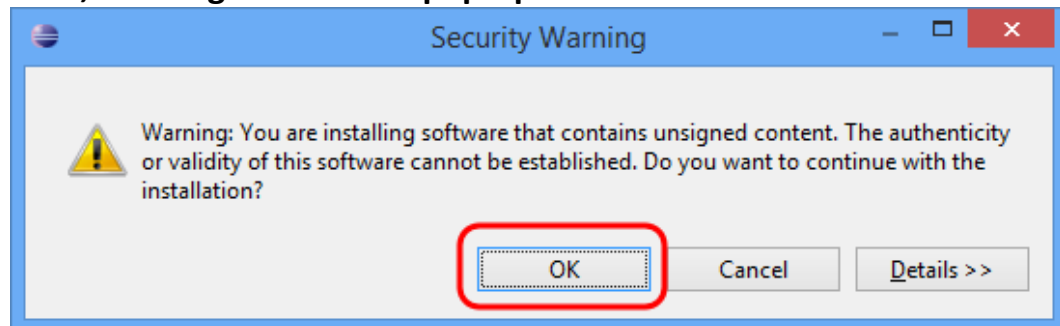
- Check “I accept the terms of the license agreements”.
- Then, click Finish.



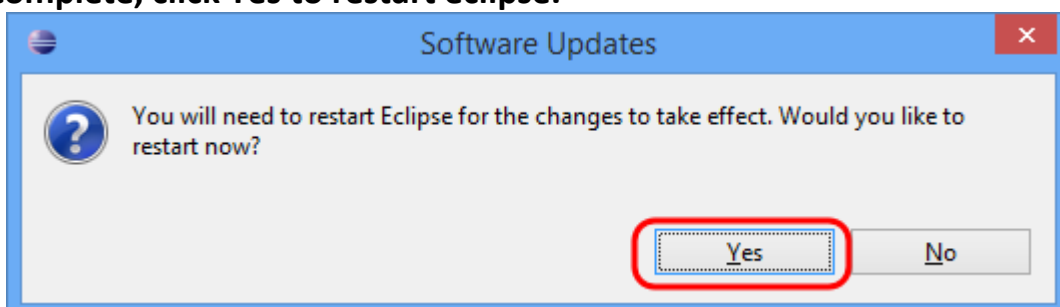
- It will start downloading and installing all the necessary files. It will take a while.



- During that time, warning screens will pop-up. Click OK to continue the installation.

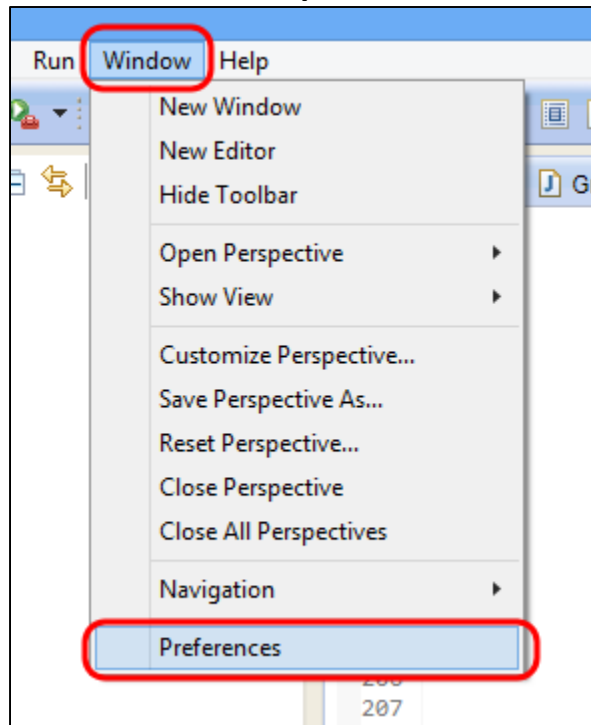


- When it is complete, click Yes to restart eclipse.

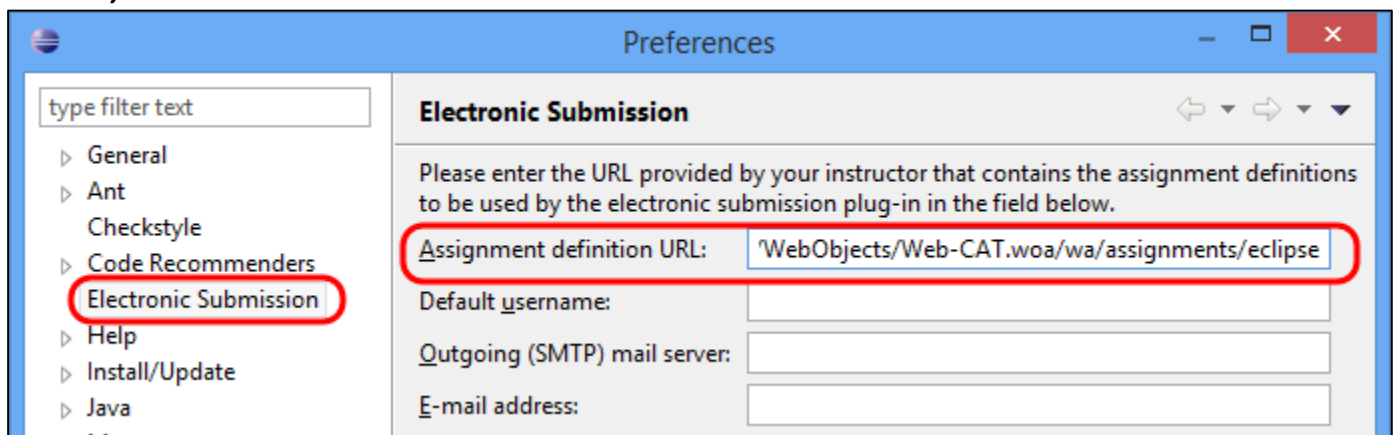


2. Adding the electronic submission URL

- **Open Eclipse.**
- **In Eclipse, click on Window > Preferences to open the Preferences window.**

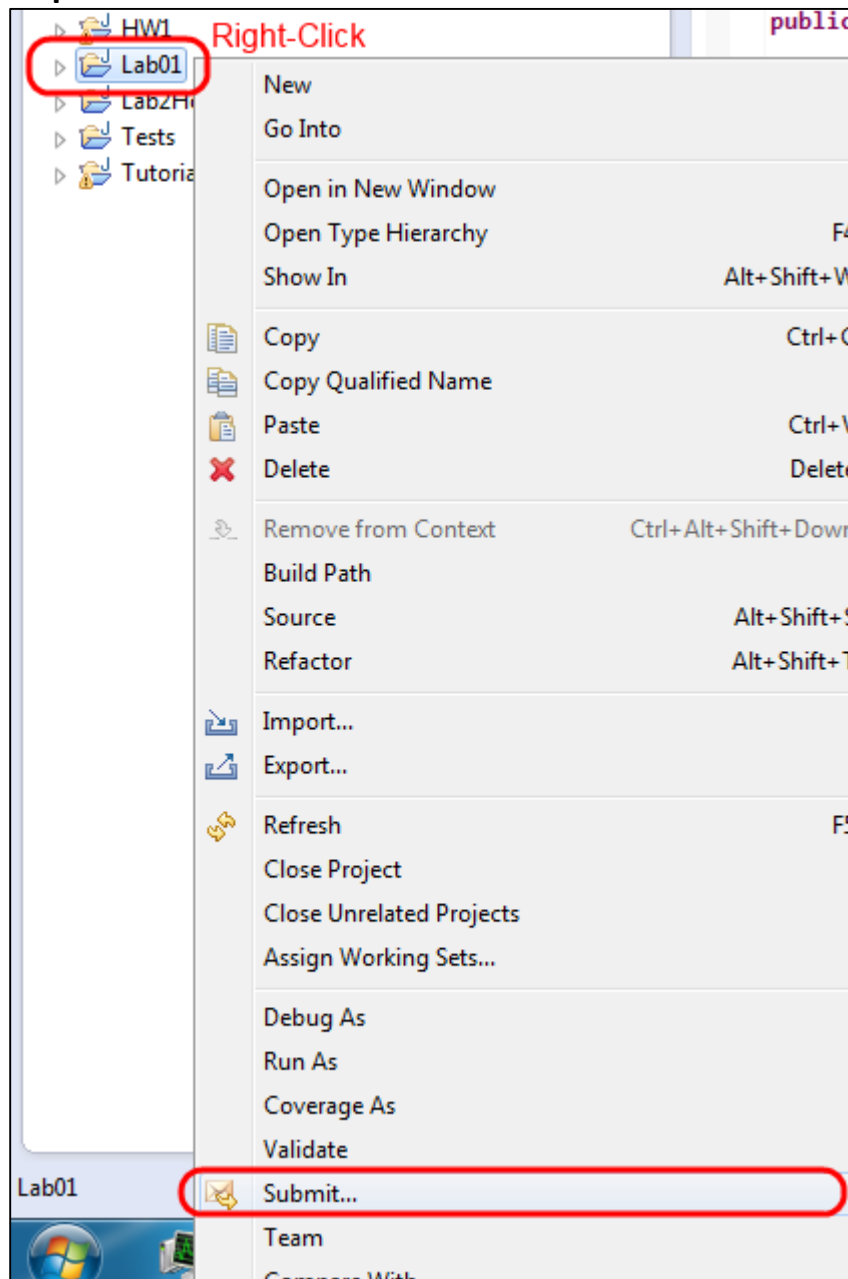


- **In the Preferences window:**
 - **Click on Electronic Submission.**
 - **In the Assignment definition URL field, enter “http://10.131.240.28:8080/Web-CAT/WebObjects/Web-CAT.woa/wa/assignments/eclipse”**
 - **Then, click OK.**



3. Submitting your code (Using KSU network only)

- Right click on your project folder in the Package Explorer.
- Click on Submit... to open the Electronic Submission window.



- In the Electronic Submission window:

- Select the Homework/Exam field for your section.
- Enter your Username and Password. Both are your University ID.
- Then, click Next

The screenshot shows a web interface for submitting an assignment. At the top, it says "Submit as:" followed by a folder icon and "CSC 111". Below this is a list of files: "Lab01-50847: HelloWorld", "50850 lab 01: 50850 lab 01 hello world", "Lab-01: Thu 1-3", "lab01: HelloWorld", "lab1: helloworld", and "Lab01-35926: HelloWorld". The last file is highlighted with a red box. Below the list, there is a red text prompt: "Select the assignment you want to submit". At the bottom, there are two input fields: "Username:" with the value "4340000000" and "Password:" with a masked password "••••••••". Both input fields are also highlighted with red boxes.

- Click Finish

- Finally, the system will grade your submission automatically.

The screenshot shows the "Your Assignment Submission Results" page. At the top, there is a header with the title "Your Assignment Submission Results" and a "Permalink" button. Below the header, there is a "Viewing:" section with three dropdown menus: "All", "CSC 111 (Wed-8am (35926))", and "Lab01-35926: HelloWorld". The main content area is titled "Result Summary" and contains two buttons: "Submit Again" and "Full Printable Report". Below these buttons, there are two tables. The first table, "Assignment", shows details for "CSC 111 (Wed-8am (35926)): Lab01-35926 try #1", including the user's name "Marwan Almaymoni (35926)", their partners "Marwan Almaymoni (35926)", the submission time "02/04/15 02:57AM, 2 days, 12 hrs, 2 mins early", and the total score "50.0/100.0". The second table, "Score Summary", shows the grading details: "Design/Readability: /50.0 <Awaiting Staff>", "Correctness/Testing: 50.0/50.0", and "Final score: 50.0/100.0". A progress bar is shown next to the final score. At the bottom of the page, there is a "Graphs" section and a "Problems" section with tabs for "Problems", "Javadoc", "Declaration", and "Console". The "Console" tab is selected, and it shows the message "No consoles to display at this time."