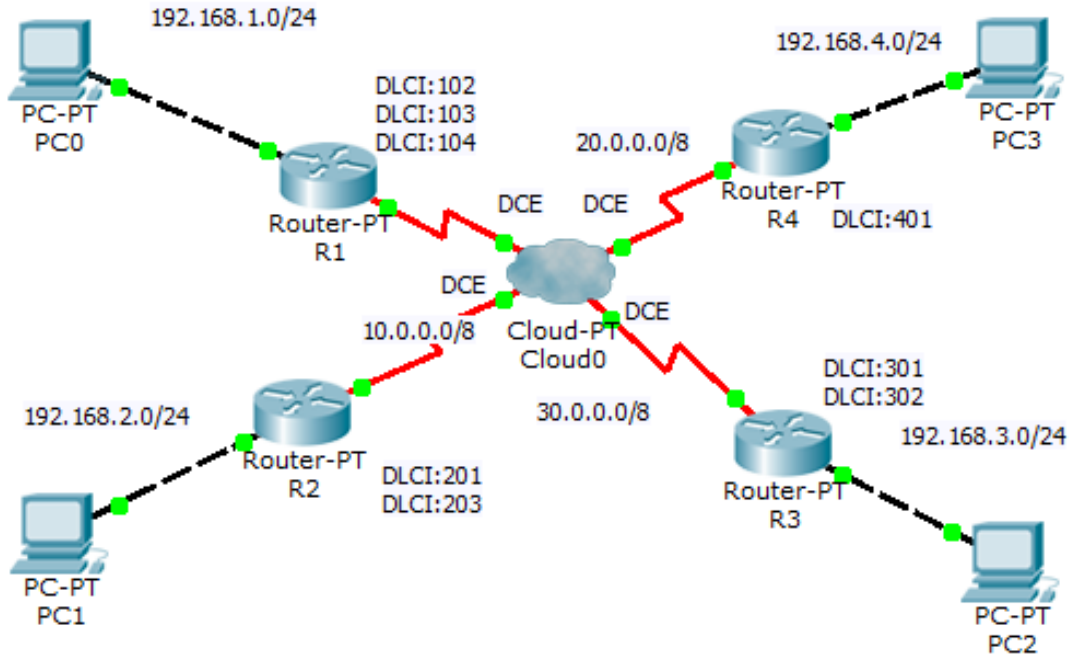


1404CT
2nd semester 1436-1437
Assignment 5

For the following network



Address table

Device	Interface	type	IP address	SubnetMask	Default Gateway
R1	Se2/0.1	Multi-point R2 and R3	10.1.1.1	255.0.0.0	N/A
	Se2/0.2	Point-to-point R4	20.1.1.1	255.0.0.0	N/A
	Fa0/0		192.168.1.1	255.255.255.0	N/A
R2	Se2/0.1	Point-to-point R1	10.2.2.2	255.0.0.0	N/A
	Se2/0.2	Point-to-point R3	30.2.2.2	255.0.0.0	N/A
	Fa0/0		192.168.2.1	255.255.255.0	N/A
R3	Se2/0.1	Point-to-point R1	10.3.3.3	255.0.0.0	N/A
	Se2/0.2	Point-to-point R2	30.3.3.3	255.0.0.0	N/A
	Fa0/0		192.168.3.1	255.255.255.0	N/A

R4	Se2/0		20.2.2.2	255.0.0.0	N/A
	Fa0/0		192.168.4.1	255.255.255.0	N/A
PC0	Fa0		192.168.1.100	255.255.255.0	192.168.1.1
PC1	Fa0		192.168.2.100	255.255.255.0	192.168.2.1
PC2	Fa0		192.168.3.100	255.255.255.0	192.168.3.1
PC3	Fa0		192.168.4.100	255.255.255.0	192.168.4.1

1. Building the network
2. Configuring the cloud (Frame Relay network)
3. Configuring the Frame Relay on the routers
4. Configure RIPv2 on the routers and configure the LAN ports as a passive interfaces.
5. Verify end-to-end connectivity