

RESEARCH

Open Access



Oral administration of potassium bromate induces neurobehavioral changes, alters cerebral neurotransmitters level and impairs brain tissue of swiss mice

Jamaan Ajarem¹, Naif G. Altoom¹, Ahmed A. Allam^{1,2}, Saleh N. Maodaa¹, Mostafa A. Abdel- Maksoud^{1*} and Billy KC. Chow³

Abstract

Background: Potassium bromate (KBrO₃) is widely used as a food additive and is a major water disinfection by-product. The present study reports the side effects of KBrO₃ administration on the brain functions and behaviour of albino mice.

Methods: Animals were divided into three groups: control, low dose KBrO₃ (100 mg/kg/day) and high dose KBrO₃ (200 mg/kg/day) groups.

Results: Administration of KBrO₃ led to a significant change in the body weight in the animals of the high dose group in the first, second and the last weeks while water consumption was not significantly changed. Neurobehavioral changes and a reduced Neurotransmitters levels were observed in both KBrO₃ groups of mice. Also, the brain level of reduced glutathione (GSH) in KBrO₃ receiving animals was decreased. Histological studies favoured these biochemical results showing extensive damage in the histological sections of brain of KBrO₃-treated animals.

Conclusions: These results show that KBrO₃ has serious damaging effects on the central nervous system and therefore, its use should be avoided.

Keywords: Organ toxicity, Dopamine, Serotonin, Acetylcholine, Reduced glutathione

Background

Potassium bromate (KBrO₃) is widely used as a flour improver that acts as a maturing agent [1]. During the last 90 years, it has been used as a food additive [2]. It acts principally in the late dough stage giving strength and elasticity to the dough during the baking process in addition to promoting the rise of bread. KBrO₃ is also used in cheese production, beer making and is commonly added to fish paste products [3]. Also, it is used in pharmaceutical and cosmetic industries and is a constituent of cold wave hair solutions [2]. Moreover, KBrO₃ can

appear as a byproduct in an ozonization of water containing bromide. As a result of KBrO₃ biotransformation, free radicals' generation can cause oxidative damage to essential cellular macro molecules, leading to marked nephrotoxicity and cancer in experimental animals [4]. Indeed, many previous reports have documented that KBrO₃ can induce multiple organ toxicity in humans and experimental animals [5–7]. KBrO₃ is highly irritating and injurious to tissues especially those of the central nervous system (CNS) and kidneys [8]. Many cases of accidental poisoning in children resulting from ingestion of bromate solution and sugar contaminated with bromate were reported as the source of mild poisoning in New Zealand [9]. Consequently, KBrO₃ has been prohibited in several countries like United Kingdom, Nigeria and Canada [2]. Toxicological studies have convincingly shown that

*Correspondence: harrany@gmail.com

¹ Department of Zoology, College of Science, King Saud University, P.O. Box 2455, Riyadh 11451, Saudi Arabia

Full list of author information is available at the end of the article

KBrO₃ affects the neurobehavioral (motor equilibrium performance and spontaneous locomotor activity) status of guinea pigs [10]. KBrO₃ induced detrimental effects on auditory brainstem response of guinea pigs whereas it caused Otto-neurotoxicity mainly through the peripheral auditory nerve [11]. Behavioral changes are usually associated with a disturbance in neurotransmitters [12]. Acetylcholine, dopamine and serotonin are common neurotransmitters that can directly or indirectly influence neurons, thereby affecting behavior [13]. Behavioral changes are also associated with oxidative stress [14]. It is known that KBrO₃ induces oxidative stress in tissues [15–18] that could be the basis of bromate-induced behavioral changes. Moreover, KBrO₃ induces hemorrhage, neuronal degeneration and vacuolation of the brain tissue sections [19]. The present study attempts to assess the effect of oral administration of KBrO₃ on the behavioral changes, neurotransmitters, antioxidant status and brain histomorphology of white albino mice using two different doses of KBrO₃ to compare their effects.

Methods

Animals

Thirty (30) adult male albino mice (*Mice musculus*) with an average weight of 30.2 ± 4.24 g were obtained from animal house- College of pharmacy- King Saud University and maintained and monitored in a specific pathogen-free environment. All animal procedures were performed in accordance with the standards set out in the Guidelines for the Care and Use of Experimental Animals issued by the Committee for the Purpose of Control and Supervision of Experiments on Animals (CPCSEA). The study protocol was approved by the Animal Ethics Committee at King Saud University. All animals were allowed to acclimatize in plastic cages inside a well-ventilated room for one week prior to the experiment. The animals were maintained under standard laboratory conditions (temperature of 23 °C, relative humidity of 60–70 % and a 12-hour light/dark cycle), fed a diet of standard commercial pellets and given water ad libitum.

Potassium bromate preparation and dosing schedule

Potassium bromate salt, a product of British drug home limited, Poole England was supplied in its white crystalline form by ASILA chemicals (Saudi Arabia). It was then dissolved in water to prepare the 100 mg/kg dose and the 200 mg/kg dose. Animals were divided into 3 groups as follows: Group (I) control group (was given distilled water); Group (II) Low dose KBrO₃ group (was given 100 mg/kg); Group (III) High dose KBrO₃ group (was given 200 mg/kg). KBrO₃ was orally administered daily through oral intubation at the two doses of 100 and 200 mg/kg/day for 42 days. The doses used in the current

study were adjusted according to the LD50 calculations carried out by Kurokawa et al. [24].

Monitoring of water consumption and body weight changes

Daily water consumption was monitored for all animals in the three groups. The animals were weighed prior to the commencement of administration and in subsequent weeks during the experiment period. At the end of administration, the mice were sacrificed by cervical dislocation.

Behavioral studies

Ten animals from each group were used in the current study. For testing, the animals were brought in a room (25 °C) of dim red light reserved for that purpose. All tests were conducted blindly by the same experimenter [20]. Except for Morris maze experiment, all experiments were carried out during the 3rd and the 6th weeks.

T-maze conducting assay

All animal's groups were deprived from food all night before this examination. The elevated T-maze consists of three closed arms to be T like structure. The main arm (100 × 10 × 20 cm) and the two lateral arms (40 × 10 × 20 cm) at an elevation of 20 cm above the floor. At the end of the right lateral arm, the rodent food was placed. Hungry animals were placed in the terminal end of the main arm of the elevated T-maze facing the passage to the two lateral arms, and left to explore the maze for one min then the animal removed from the maze and kept in its cage for 2 hrs and replaced in the same position in the main arm and the behavior analyzed for 5 min. Both of the time spent exploring the arms to reach food, and the time spent in the food arm in seconds, were determined. The frequency and time of entering the food lateral arm was considered to be memory reflector.

Grip-strength meter assay

The Ugo Basile 47,200-Grip-Strength Meter (COMERIO-Varese, Italy) is suitable for mice and can automatically measures grip-strength (i.e. peak force and time resistance) of forelimbs in mice. The aim was to assess forelimbs muscle strength. Each animal was tested three times and the peak force of each mouse was recorded. The mean of three values of each mouse was recorded.

Rota-rod assay

The Ugo Basile Rota-rod instrument (COMERIO-Varese, Italy) has been used in this test. The mouse is placed on a horizontally oriented position and mechanically rotating at 15 rpm rod. The rod is suspended above a cage floor, which is high enough for avoidance of fall. Mice naturally

try to stay on the rotating rod, or Rota-rods, and avoid falling to the ground. The length of time that a given animal stays on this rotating rod is considered as a measure of their balance, coordination, and motor-activity.

Sample collection

For histological studies, brains were removed and cut into small pieces in sterile saline solution, fixed in 10 % neutral buffered formalin and embedded in paraffin. For biochemical investigations, samples were prepared by weighing 200 mg of longitudinal brain sections into a dry and clean Teflon digestion beaker, to which, 6 ml of HNO₃, 2 ml HCl and 2 ml HF were added. Samples were digested on the hot plate at 120–150 °C for 40 min. The resulting digest was filtered through whatman filtered paper no42. The filtered digest was transferred to a 50 ml plastic volumetric flask and completed to the mark using deionized water.

Histological studies

For the histological slides preparation, left loop of cerebellum, cerebral cortex and medulla oblongata of three sacrificed animals were fixed in 20 % formalin saline for 24 h. To remove the excess of the fixative, the tissues were washed and then dehydrated in ascending grades (70, 80, 90 and 95 %) of ethanol for 45 min each, then in two changes of absolute ethanol for 30 min each. This was followed by two changes of xylene for 30 min each. The tissues were then impregnated and embedded in paraplast plus. Sections (4–5 µm) were prepared with a microtome, de-waxed, hydrated and stained in Mayer's haemalum solution for 3 min. The sections were stained in Eosin for one min, washed in tap water and dehydrated in ethanol as described above.

Neurochemical studies

Dopamine and serotonin determination

The level of dopamine and serotonin was estimated in the brain using the modified method of Patrick et al. [21]. A 10 % homogenate of the brain has been re-centrifuged at 17,000 rpm at 4 °C for 5 min. The supernatants were filtered using 0.45 µm pore filters and analyzed by high performance liquid chromatography. The mobile phase consisted of 32 mM citric acid monohydrate, 12.5 mM disodium hydrogen orthophosphate, 7 % methanol, 1 mM octane sulfonic acid and 0.05 mM EDTA. The mobile phase was filtered through 0.22 µm filter and degassed under vacuum before use. Bondpak C18 column was used at a flow rate of 1.2 ml/min and the injection volume of the sample was 20 µl. The levels of dopamine and serotonin were calculated using a calibration curve and results were expressed as ng/mg tissue weight.

Determination of acetylcholine

The level of acetylcholine was estimated in the brain using a method that has been described previously [22]. In brief, dialysate samples were injected into the liquid chromatography/electrochemistry system assisted by a chromatography manager (Millennium; Waters, Milford, MA), and analyzed for acetylcholine. Acetylcholine was separated on a coiled cation exchanger acetylcholine column (analytical column) (Sepstik 530 × 1.0 mm I.D., packed with polymeric strong exchanger, 10 µm in diameter; BAS, West Lafayette, IN), followed by the post-immobilized enzyme reactor which consisted of choline oxidase/acetylcholine esterase. Acetylcholine was hydrolyzed by acetylcholine esterase to form acetate and choline in the post-immobilized enzyme reactor, and then choline was oxidized by choline oxidase to produce betaine and hydrogen peroxide (H₂O₂). H₂O₂ is detected via oxidation of horseradish peroxidase, which in turn entrapped in the redox polymer coated on the surface of the glassy carbon electrode (MF-9080; BAS), set at +100 mV (LC-4C; BAS) versus Ag/AgCl reference electrode. This reduction was analyzed with the detector (LC-4C; BAS) as a signal indicating acetylcholine on the chromatogram.

Reduced Glutathione (GSH) assay

Reduced glutathione content was determined according to the method of Beutler et al. [23] with some modification. Briefly, 0.20 ml of tissue supernatant was mixed with 1.5 ml of the precipitating solution which contains 1.67 % glacial metaphosphoric acid, 0.20 % Na-EDTA and 30 % NaCl. The mixture was allowed to stand for 5 min at room temperature and centrifuged at 1000 rpm for 5 min. One ml clear supernatant was mixed with 4 ml 0.30 M Na₂HPO₄ and 0.50 ml DTNB reagent (40 mg 5, 5'-dithiobis-(2-nitrobenzoic acid dissolved in 1 % sodium citrate). The blank was prepared similarly whereas 0.20 ml water was used instead of the brain supernatant. The absorbance of the color was measured at 412 nm in a spectrophotometer.

Statistical analysis

Prior to further statistical analysis, the data were tested for normality using the Anderson–Darling test, as well as for homogeneity variances. The data was normally distributed and is expressed as the mean ± standard error of the mean (SEM). Significant differences among the groups were analysed by one- or two-way ANOVA followed by Tukey's post-test using SPSS software, version 17. Differences were considered statistically significant at $P < 0.05$.

Results

Effect of KBrO₃ on the body weight and water consumption of the treated mice

Figure 1a illustrates that during the first, the second and the last weeks of KBrO₃ treatment, the high dose of KBrO₃ (200 mg/kg) was accompanied with a decrease in body weight in comparison to both the control group and the low dose treated group. On the other hand, the low dose of KBrO₃ (100 mg/kg) effect on body weight decrease, was not significant. Water consumption was investigated to study its correlation with KBrO₃ dose. As illustrated in Fig. 1b, the means of water consumption were similar between all KBrO₃ exposure and control groups throughout the study.

KBrO₃ treatment can cause a disturbance in the behavior of the treated mice

When investigating the behavior of animals in the T-maze, bad memory and low smell ability of the KBrO₃

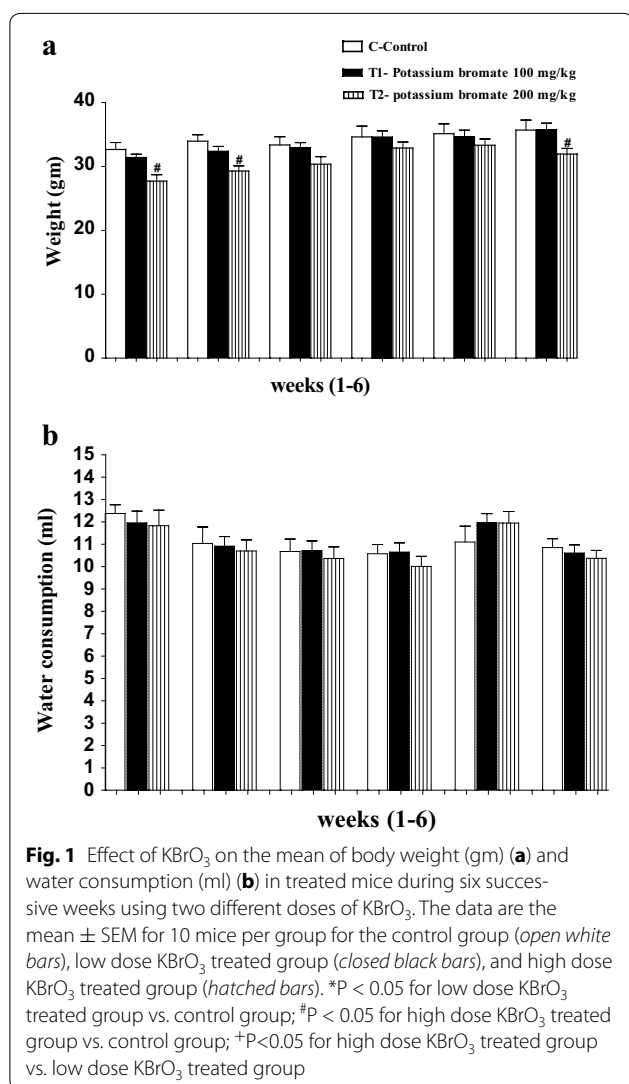
treated groups during both the 3rd week and the 6th week in comparison to the control group was recorded. This was represented in the reduction of the number of entrances to the main arm (Fig. 2a), the increase in the time consumed to reach to the food in the food arm (Fig. 2b), the decrease in both of the number of entrances to the food arm (Fig. 2c) and the number of entrances to the empty arm (Fig. 2d). Additionally, the Morris—maze examination confirmed the observed bad memory in T-maze. Learning ability was also limited in both of the KBrO₃ groups whereas they consumed much time to reach to the target (Fig. 3a) along four successive days. Still, the harmful effect of the high dose of KBrO₃ is much more significant than that of the low dose one.

The fore-limb muscles of the animals in the group of the KBrO₃ low dose recorded lower beaks in comparison to the control group in the grip strength examination scores. Moreover, the recorded beaks of the high dose KBrO₃ group appeared significantly lower than the control group during both the 3rd and the 6th weeks (Fig. 3b).

In rotator test, both of the KBrO₃ groups have exhibited a short time on the rod during both the 3rd and the 6th weeks in comparison to the animals of the control group. The staying times of the animals of the low dose KBrO₃ group on the rod were less than the time of the control group. For the high dose KBrO₃ group, the staying times of the animals on the rod were lower than that of the low dose group (Fig. 3c).

KBrO₃ treatment is associated with depletion of neurotransmitters in the brain of the treated mice

Dopamine is an important neurotransmitter that plays a number of important roles in the brain. Consequently, investigating the brain level of this molecule after KBrO₃ treatment is of special relevance. In comparison to the control group (49.089 ± 0.634), a significant ($*P < 0.05$) depletion of dopamine concentration (39.338 ± 0.533) has been detected in the low dose KBrO₃ group. Also, a highly significant ($#P < 0.05$) reduction (26.672 ± 0.672) in the dopamine level in the high dose KBrO₃ group in comparison to the control group was recorded (Fig. 4a). Another important monoamine neurotransmitter is serotonin. Here, a significant ($*P < 0.05$) reduction (2.331 ± 0.0664) in brain-serotonin concentration in the low dose KBrO₃ group in comparison to the control group (3.243 ± 0.0943) was detected. Additionally, a highly significant ($#P < 0.05$) decrease (1.756 ± 0.0525) in brain-serotonin concentration in the high dose KBrO₃ group in comparison to the control group was detected (Fig. 4b). Another organic molecule that acts as a neurotransmitter is acetylcholine. Indeed, acetylcholine



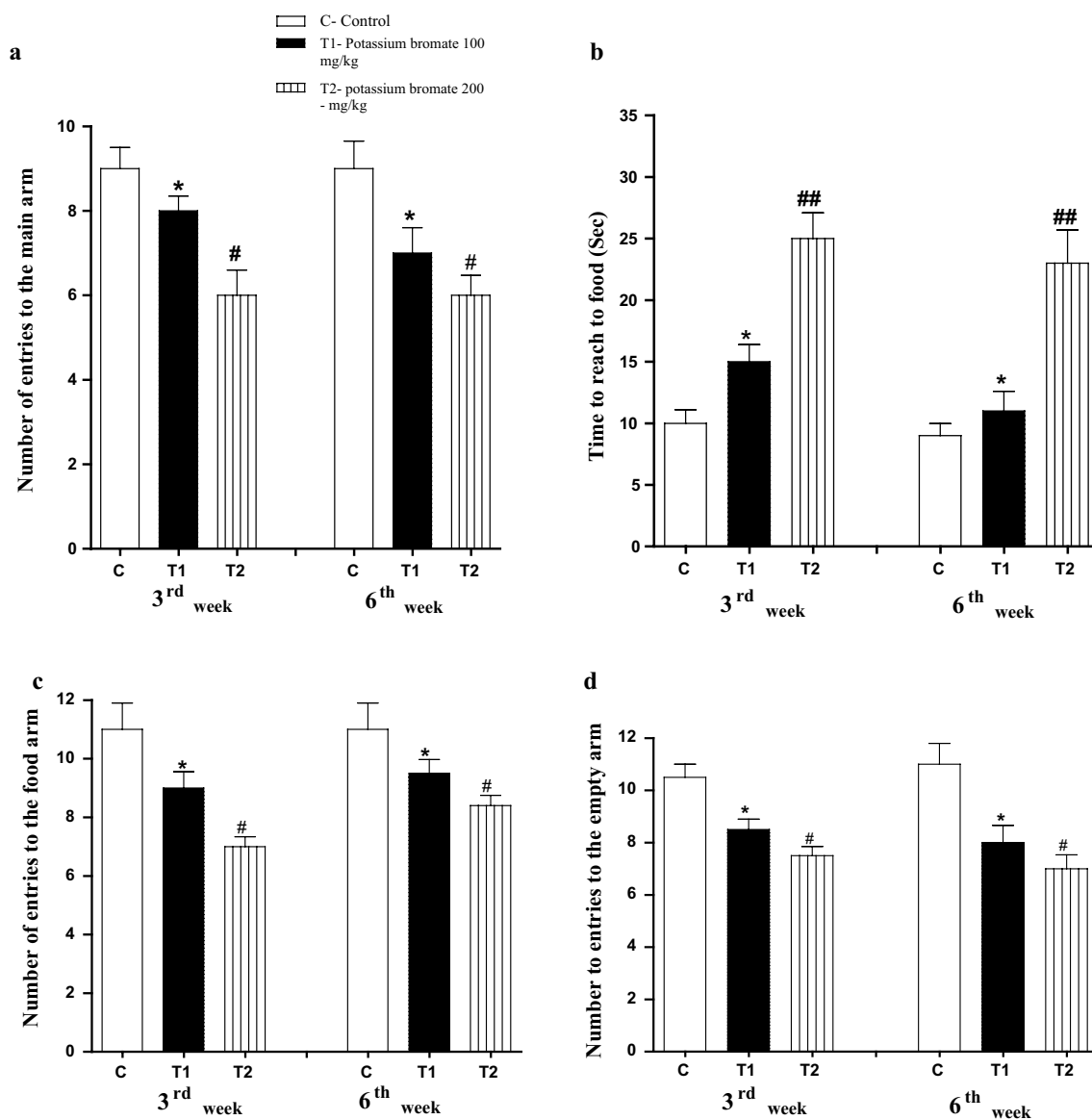


Fig. 2 Effect of KBrO_3 on the animal's behavior in T-maze. **a** The number of entrances of main arm. **b** The time consumed to reach to the food. **c** The number of entrances to the food arm. **d** The number of entrances to the empty arm. Data are expressed as mean \pm SEM for 10 mice per group

concentrations showed similar results to that of both dopamine and serotonin. In comparison to the control group (65.678 ± 0.627), acetylcholine concentration in the brain of the low dose KBrO_3 group was significantly ($*P < 0.05$) reduced (47.936 ± 0.459). Again, the brain level of acetylcholine in the high dose KBrO_3 group was significantly ($\#P < 0.05$) lower (37.16 ± 0.728) than that of both the control group and the low dose KBrO_3 group (Fig. 4c). This harmful effect of KBrO_3 was dominant during both the 3rd and the 6th weeks.

Decreased brain level of reduced glutathione (GSH) after KBrO_3 treatment in animals

Reduced glutathione (GSH) is an important antioxidant that plays a crucial role in nearly all living organisms. KBrO_3 treatment had a negative effect on the brain level of this important molecule. In the low dose KBrO_3 group, the brain level of GSH was significantly ($*P < 0.05$) reduced (250.31 ± 39.61) in comparison to the control group (420.63 ± 59.61). Also, a significant ($\#P < 0.05$) reduction in the level of this crucial molecule was detected in the high dose KBrO_3 group (110.76 ± 15.87)

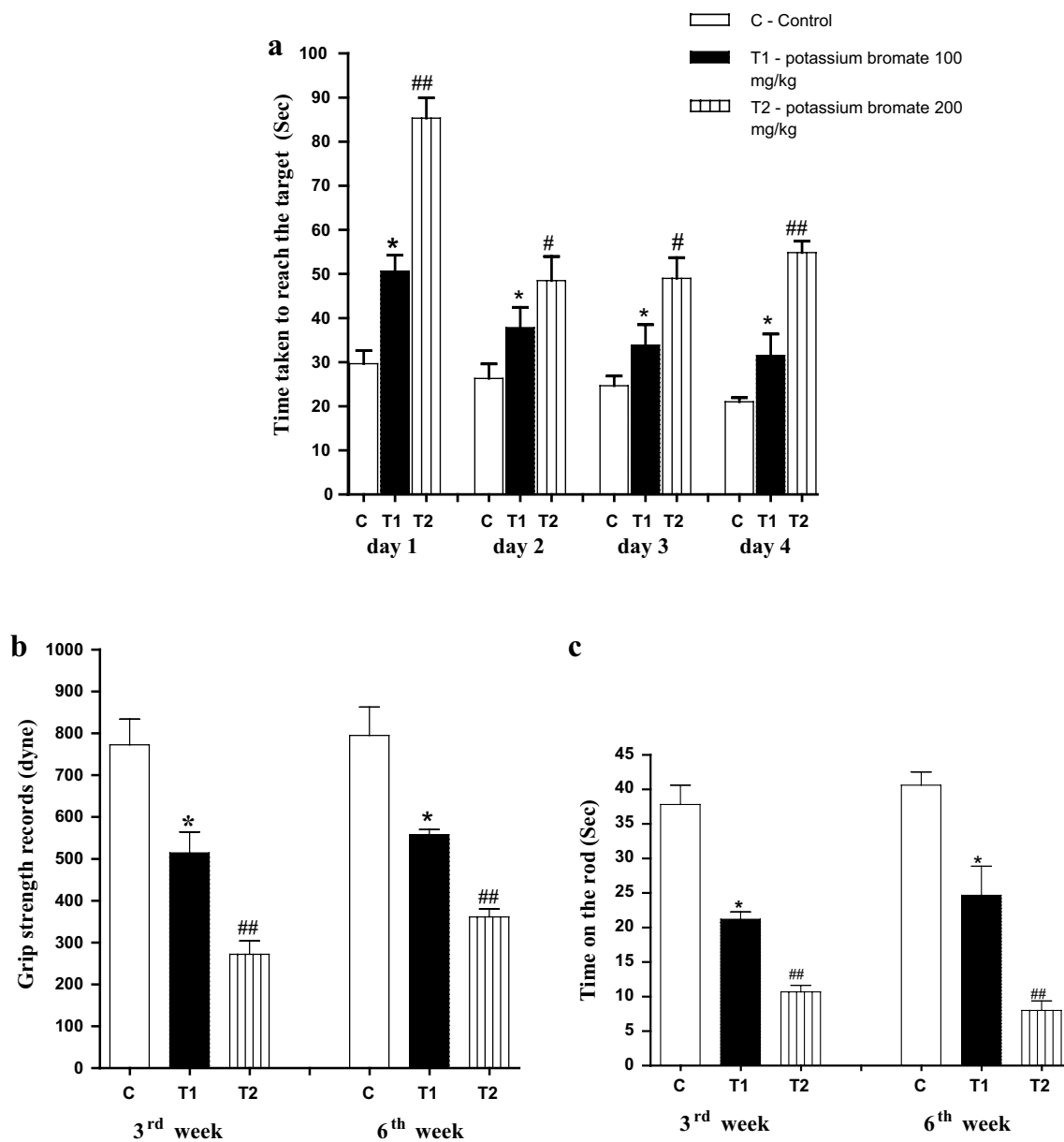


Fig. 3 Effect of KBrO₃ on **a** The animal's behavior in water maze (Morris maze), **b** the fore limb grip strength records and **c** rotarod records for the animals of each group. Data are expressed as mean \pm SEM for 10 mice per group

in comparison to either the control group or the low dose KBrO₃ group (Fig. 5). Like neurotransmitters, the reducing effect of KBrO₃ on the glutathione level, was dominant during both the 3rd and the 6th weeks.

KBrO₃ treatment has induced brain histopathological changes in mice

In the control group, the normal pyramidal neurons exhibited their general characteristic shape with rounded, large and centrally located nuclei (Fig. 6). The normal

cells of the cerebral cortex had a spherical perikaryon whose nuclei were large. Also the neurons were arranged in a regular pattern (Fig. 6a, b). In both of KBrO₃ treated groups, pyknosis and chromatolysis have been observed in the pyramidal neurons (Fig. 6c, d, e, f).

In the cerebellum, the neuronal density in the molecular layer of control group was the highest compared to KBrO₃ treated groups. The normal Purkinje cells were arranged in a single row of large neurons with pear-shaped perikaryon and large nucleus. The lateral

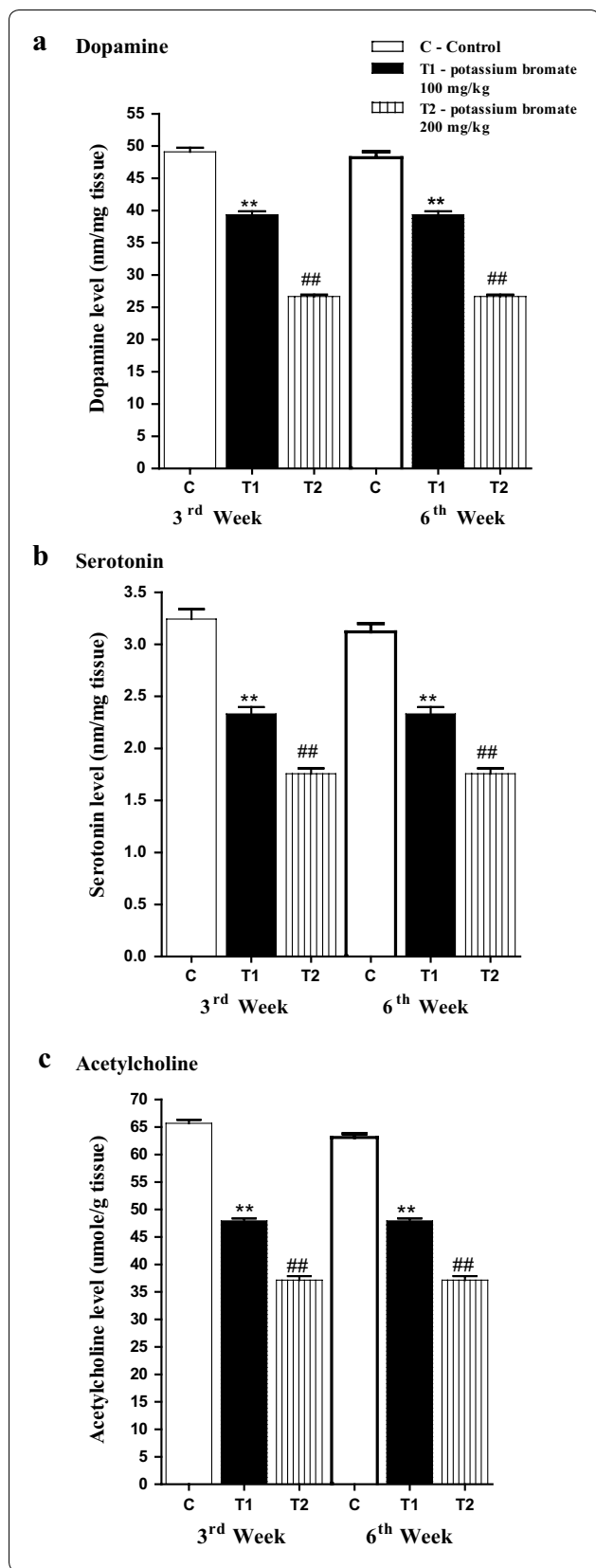


Fig. 4 Effect of KBrO₃ treatments on the level of neurotransmitters in the brain of treated mice. **a** Mean of Dopamine (nm/mg tissue) in brain tissue of treated mice during third and sixth weeks, **b** mean of Serotonin (nm/mg tissue) in brain tissue of treated mice during third and sixth weeks, **c** mean of Acetylcholine (umole/g tissue) in brain tissue of treated mice during third and sixth weeks. Data are expressed as mean ± SEM for 10 mice per group

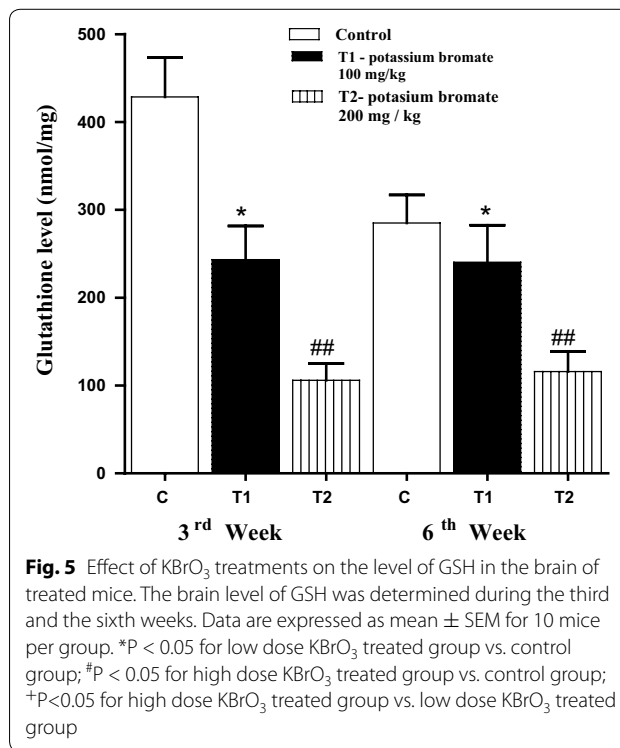


Fig. 5 Effect of KBrO₃ treatments on the level of GSH in the brain of treated mice. The brain level of GSH was determined during the third and the sixth weeks. Data are expressed as mean ± SEM for 10 mice per group. *P < 0.05 for low dose KBrO₃ treated group vs. control group; #P < 0.05 for high dose KBrO₃ treated group vs. control group; +P < 0.05 for high dose KBrO₃ treated group vs. low dose KBrO₃ treated group

processes disappeared and the apical processes formed the permanent dendritic tree (Fig. 7a, b). On the other hand, in both of KBrO₃ treated groups, some degenerated Purkinje cells were detected and some were more spindle-shaped and small (Fig. 7c, d, e, f). In control group, the normal neurons in the medulla appeared large in size, polygonal, varied in shape and had round nuclei (Fig. 8a, b). In both of KBrO₃ treated groups, most of medulla neurons appeared small and pyknotic (Fig. 8c, d, e, f). Also, degenerated medullary neurons were observed (Fig. 8 d, f).

Discussion

Potassium bromate (KBrO₃) is widely used as improving additive for bread making [7] and marketed as a neutralizer in home permanent cold wave hair kits. Several cases of accidental poisoning in children resulting from the ingestion of KBrO₃ solution, were reported [9]. Due

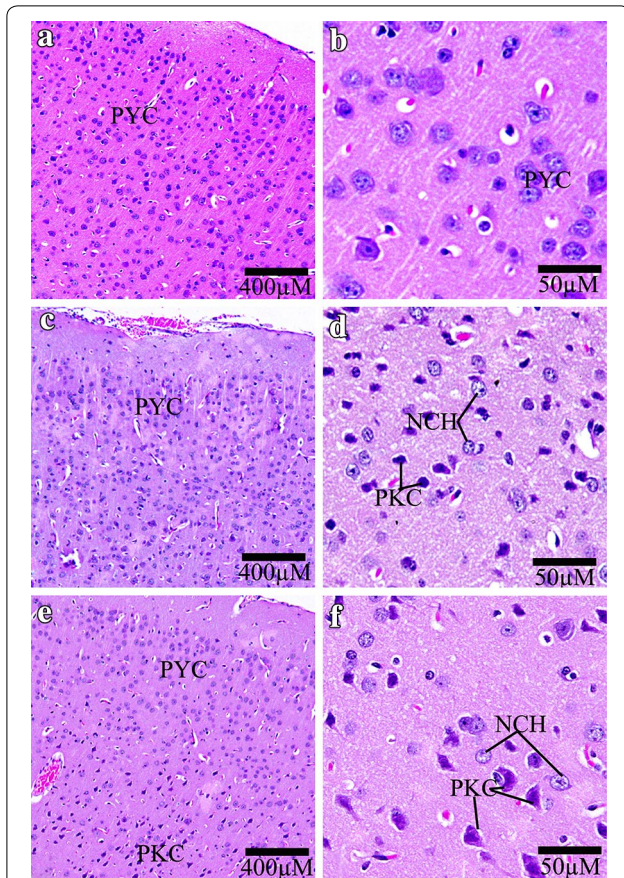


Fig. 6 Effect of KBrO_3 treatments on the Cerebral cortex of treated mice. Sagittal sections of the cerebral cortex depicting the pyramidal cell distribution (PYC), neurocytechromatolysis (NCH) and pyknosis (PKC) in the following groups: **a, b** control group, **c, d** potassium bromate 100 mg/kg group, **e, f** potassium bromate 200 mg/kg group. Scale bar 400 μm in **a, c, e** and 50 μm in **b, d, f**

to its hazardous effects, it has been forbidden in various countries [2]. Toxicity studies in animals are commonly used to assess potential health risk in humans caused by intrinsic adverse effects of chemical compounds [24]. These adverse effects may manifest significant alterations in the levels of bio molecules, normal functioning and histomorphology of the organs [3]. The current study was designed to investigate some of the behavioral and biochemical changes induced by KBrO_3 intake in albino mice. We have observed that oral intubation of KBrO_3 at the dose of 200 mg/dl was accompanied with an obvious decrease in the body weight of the animals while the lower dose cannot do this effect. This is in agreement with the results obtained by Kurokawa et al. [25] who have reported a dose-dependent inhibition of body weight increase in both male and female F344 rats after oral administration of KBrO_3 . Also, similar results were

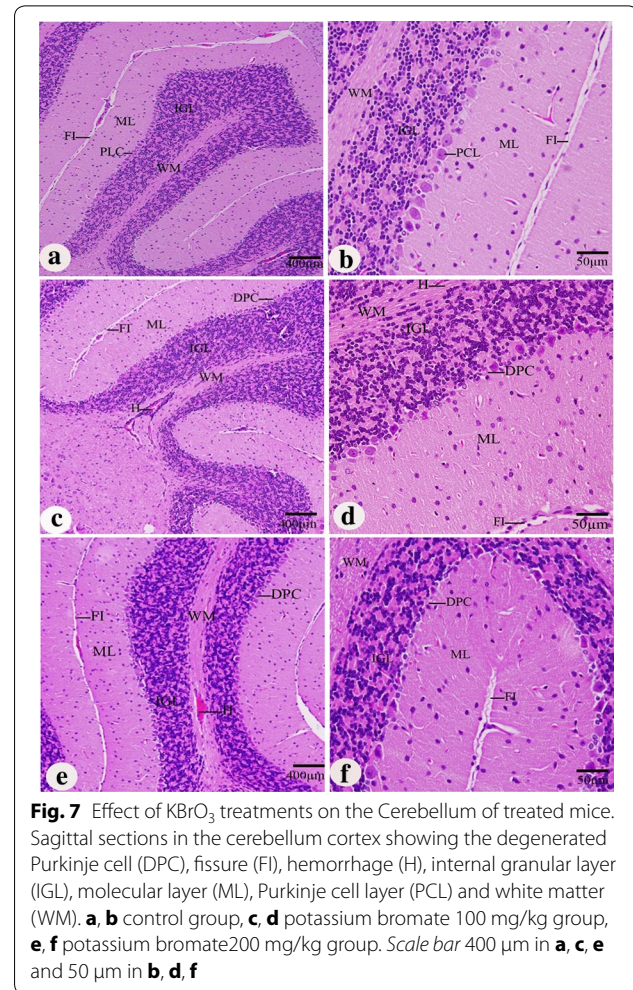
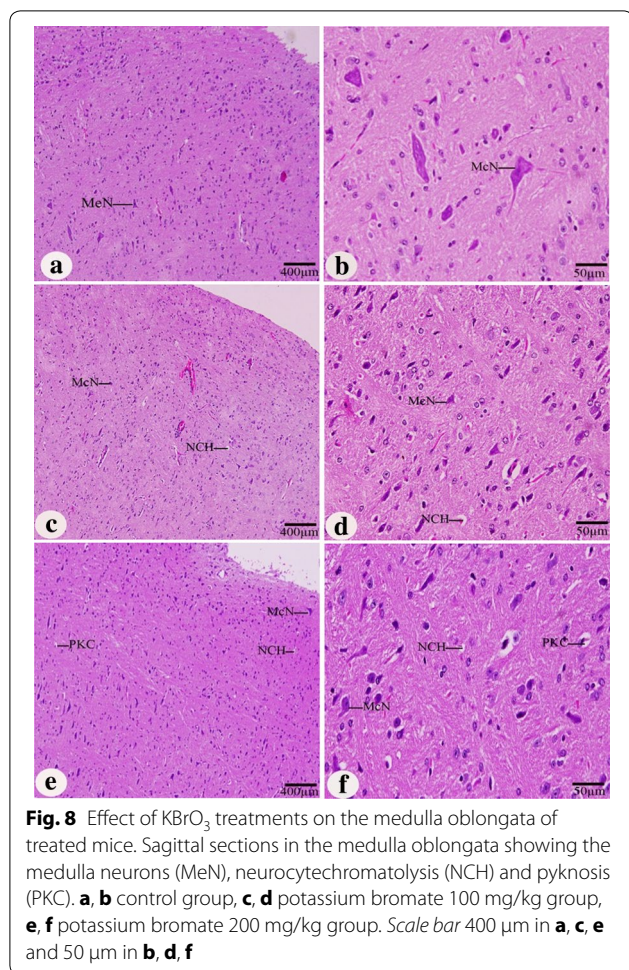


Fig. 7 Effect of KBrO_3 treatments on the Cerebellum of treated mice. Sagittal sections in the cerebellum cortex showing the degenerated Purkinje cell (DPC), fissure (FI), hemorrhage (H), internal granular layer (IGL), molecular layer (ML), Purkinje cell layer (PCL) and white matter (WM). **a, b** control group, **c, d** potassium bromate 100 mg/kg group, **e, f** potassium bromate 200 mg/kg group. Scale bar 400 μm in **a, c, e** and 50 μm in **b, d, f**

obtained with guinea pigs [11]. Water consumption was not affected by the oral administration of KBrO_3 with either the 100 or 200 mg/dl doses. These results agree with that of Dodd et al. [26] who have reported that only the 400 mg/L dose can result in a significant increase in water consumption and other lower doses cannot. Many environmental contaminants were reported to be associated with behavioral changes and this was elucidated in many studies before [27–31]. The abnormal pattern in open-field, social, learning and emotional behaviors were documented in Wister rats after receiving Sodium nitrite in the drinking water [32]. KBrO_3 -mediated behavioral changes seen in the current study may be attributed partially to the harmful effect of KBrO_3 on the brain level of neurotransmitters. It was reported that abnormalities in the regulation of neurotransmitter release and/or abnormal levels of extracellular neurotransmitter concentrations are considered as core components of hypotheses on the neuronal foundations of behavioral



and cognitive disorders and the symptoms of neuropsychiatric and neurodegenerative disorders [13]. GSH is the most abundant antioxidant molecule that is critical for protecting the brain from oxidative stress, acting as a free radical scavenger and inhibitor of lipid peroxidation. In the current study, the decrease in the brain level of the antioxidant molecule, GSH, could be considered as an important reason for the observed behavioral changes. Previous reports have documented a direct relationship between behavioral changes and oxidative stress [33, 34]. Oxidative stress can mediate neurodegeneration in hippocampus and behavioral changes of adult rats [35]. Concomitantly, KBrO_3 induced pathological changes on the histological level in the brain tissue of the treated rats which may be considered as another important causative factor for the negative behavioral changes. Previous studies have reported hemorrhage, neuronal degeneration and vacuolation of the brain tissue sections of rats after KBrO_3 treatment [19]. Taken together, our data illustrate that oral administration of KBrO_3 has a direct effect on the behavioral level, neurotransmitters content,

antioxidant status and brain histomorphology of white albino rat and that using two different doses of KBrO_3 has different outcomes.

Conclusions

Potassium bromate has deleterious effects on the central nervous system of mice. It can disturb the neurotransmitters levels, antioxidant defence molecules and induce histopathological changes in cerebral tissue. Therefore, its use in human used- products should be stopped.

Abbreviations

EDTA: ethylene diamine tetra acetic Acid; ICP-MS: inductively coupled plasma mass spectrometer; GSH: reduced glutathione; KBrO_3 : potassium bromate; CNS: central nervous system; H_2O_2 : hydrogen peroxide.

Authors' contributions

JA and NA carried out the experimental work, participated in the design of the study. AA and SN provided expertise in the HPLC-MS analysis and participated in the design and coordination of the study. MA participated in the design of the study, revised the whole Ms and performed statistical revision. All authors read and approved the final manuscript.

Author details

¹ Department of Zoology, College of Science, King Saud University, P.O. Box 2455, Riyadh 11451, Saudi Arabia. ² Department of Zoology, Faculty of Science, Beni-suef University, Beni-Suef, Egypt. ³ School of Biological Sciences, University of Hong Kong, Hong Kong, China.

Acknowledgements

We extend our appreciation to the Dean of Scientific Research, King Saud University, for funding the work through the research group project number RGP-VPP-240.

Competing interests

The authors declare no competing interests. This manuscript has not been published or submitted elsewhere. This work complies with the Ethical Policies of the Journal and has been conducted under internationally accepted ethical standards following relevant ethical review.

Received: 24 December 2015 Accepted: 8 April 2016

Published online: 12 May 2016

References

- Vadlamani KR, Seib PA. Effect of zinc and aluminium ions in bread making. *Cereal Chem.* 1999;76:355–60.
- Oloyede OB, Sunmonu TO. Potassium bromate content of selected bread samples in Ilorin, Central Nigeria and its effect on some enzymes of rat liver and kidney. *Food Chem Toxicol.* 2009;47:2067–70.
- Ahmad MK, Mahmood R. Protective effect of taurine against potassium bromate-induced hemoglobin oxidation, oxidative stress, and impairment of antioxidant defense system in blood. *Environ Toxicol.* 2014. doi:10.1002/tox.22045.
- Chipman JK, Davies JE, Parsons JL, Nair J, O'Neill G, Fawell JK. DNA oxidation by potassium bromate; a direct mechanism or linked to lipid peroxidation. *Toxicology.* 1998;126:93–102.
- Farombi EO, Alabi MC, Akuru TO. Kolaviron modulates cellular redox status and impairment of membrane protein activities induced by potassium bromate KBrO_3 in rats. *Pharmacol Res.* 2002;45:63–8.
- Kujawska M, Ignatowicz E, Ewertowska M, Adamska T, Markowski J, Jodynis-Liebert J. Attenuation of KBrO_3 -induced renal and hepatic toxicity by cloudy apple juice in rat. *Phytother Res.* 2013;27:1214–9.

7. Ahmad MK, Khan AA, Ali SN, Mahmood R. Chemoprotective effect of taurine on potassium bromate-induced DNA damage, DNA-protein cross-linking and oxidative stress in rat intestine. *PLoS One*. 2015. doi:10.1371/journal.pone.0119137.
8. Robert IA, William BC. Carcinogenicity of potassium bromate in rabbit. *Biol Edu*. 1996;34:114–20.
9. Paul AH. Chemical food poisoning by potassium bromate. *NZ Med J*. 1966;65:33–40.
10. Young YH, Chuu JJ, Liu SH, Lin-Shiau SY. Toxic effects of potassium bromate and thioglycolate on vestibule ocular reflex systems of Guinea pigs and humans. *Toxicol Appl Pharmacol*. 2001;177:103–11.
11. Chuu JJ, Hsu CJ, Lin-Shiau SY. The detrimental effects of potassium bromate and thioglycolate on auditory brainstem response of Guinea pigs. *Chin J Physiol*. 2000;43:91–6.
12. Allain H, Schuck S. Neurotransmitters and behavioral disorders. *Encephale*. 1998;1:34–7.
13. Sarter M, Bruno JP, Parikh V. Abnormal neurotransmitter release underlying behavioral and cognitive disorders: toward concepts of dynamic and function-specific dysregulation. *Neuropsychopharmacology*. 2007;32:1452–61.
14. Kita T, Miyazaki I, Asanuma M, Takeshima M, Wagner GC. Dopamine-induced behavioral changes and oxidative stress in methamphetamine-induced neurotoxicity. *Int Rev Neurobiol*. 2009;88:43–64.
15. Sai K, Takagi A, Umemura T, Hasegawa R, Kurokawa Y. Relation of 8-hydroxydeoxyguanosine formation in rat kidney to lipid peroxidation, glutathione level and relative organ weight after a single administration of potassium bromate. *J Cancer Res*. 1991;82:165–9.
16. Watanabe T, Abe T, Satoh M. Two children with bromate intoxication dueto ingestion of the second preparation for permanent hair waving. *Act Paediatr Jpn*. 1992;34:601–5.
17. Parsons JL, Chipman JK. DNA oxidation by potassium bromate: a direct mechanism or linked to peroxidation. *Toxicology*. 1992;126:93–102.
18. Parsons JL, Chipman JK. The role of glutathione in DNA damage by potassium bromate in vitro. *Mutagenesis*. 2000;15:311–6.
19. Abuelgasim A, Omer R, Elmahdi B. Serrobiochemical Effects of Potassium Bromate on Wistar Albino Rats. *Am J Food Technol*. 2008;3:303–9.
20. Ajarem JS, Ahmad M. Behavioral and biochemical consequences of perinatal exposure of mice to instant coffee: a correlative evaluation. *Pharmacol Biochem Behav*. 1991;40:847–52.
21. Patrick OE, Hirohisa M, Masahira K, Koreaki M. Central nervous system bioaminergic responses to mechanic trauma. *Surg Neurol*. 1991;35:273–9.
22. Ichikawa J, Li Z, Dai J, Meltzer HY. Atypical antipsychotic drugs, quetiapine, iloperidone, and melperone, preferentially increase dopamine and acetylcholine release in rat medial prefrontal cortex: role of 5-HT1A receptor agonism. *Brain Res*. 2002;956:349–57.
23. Beutler E, Duron O, Kelly BM. Improved method for determination of blood glutathione. *J Lab Clin Med*. 1963;61:882–8.
24. Kurokawa Y, Maekawa A, Takahashi M, Hayashi Y. Toxicity and carcinogenicity of potassium bromate—a new renal carcinogen. *Environ Health Perspect*. 1990;87:309–35.
25. Kurokawa Y, Aoki S, Matsushima Y, Takamura N, Imazawa T, Hayashi Y. Dose-response studies on the carcinogenicity of potassium bromate in F344 rats after long-term oral administration. *J Natl Cancer Inst*. 1986;77:977–82.
26. Dodd DE, Layko DK, Cantwell KE, Willson GA, Thomas RS. Subchronic toxicity evaluation of potassium bromate in Fischer 344 rats. *Environ Toxicol Pharmacol*. 2013;36:1227–34.
27. Branchi I, Capone F, Alleva E, Costa LG. Poly brominated diphenyl ethers: neurobehavioral effects following developmental exposure. *Neurotoxicology*. 2003;24:449–62.
28. Eriksson P, Jakobsson E, Fredriksson A. Brominated flame retardants: a novel class of developmental neurotoxicants in our environment. *Environ Health Perspect*. 2001;109:903–8.
29. Eriksson P, Fischer C, Fredriksson A. Polybrominateddiphenyl ethers, a group of brominated flame retardants, can interact with polychlorinated biphenyls in enhancing developmental neurobehavioral defects. *Toxicol Sci*. 2006;94:302–9.
30. Viberg H, Fredriksson A, Eriksson P. Neonatal exposure to poly brominated diphenyl ether (PBDE 153) disrupts spontaneous behaviour, impairs learning and memory, and decreases hippocampal cholinergic receptors in adult mice. *Toxicol Appl Pharmacol*. 2003;192:95–106.
31. Viberg H, Johansson N, Fredriksson A, Eriksson J, Marsh G, Eriksson P. Neonatal exposure to higher brominated diphenyl ethers, hepta-, octa-, or nonabromodiphenyl ether, impairs spontaneous behavior and learning and memory functions of adult mice. *Toxicol Sci*. 2006;92:211–8.
32. Nyakas C, Buwalda B, Markel E, Korte SM, Luiten PG. Life-spanning behavioral and adrenal dysfunction induced by prenatal hypoxia in the rat is prevented by the calcium antagonist nimodipine. *Eur J Neurosci*. 1994;6:746–53.
33. Tasset I, Peña J, Jimena I, Feijóo M, Del Carmen Muñoz M, Montilla P, Túniz I. Effect of 17beta-estradiol on olfactory bulbectomy-induced oxidative stress and behavioral changes in rats. *Neuropsychiatr Dis Treat*. 2008;4:441–9.
34. da-Rosa DD, Valvassori SS, Steckert AV, Ornell F, Ferreira CL, Lopes-Borges J, Varela RB, Dal-Pizzol F, Andersen ML, Quevedo J. Effects of lithium and valproate on oxidative stress and behavioral changes induced by administration of m-AMPH. *Psychiatry Res*. 2012;15:521–6.
35. Selvakumar K, Bavithra S, Ganesh L, Krishnamoorthy G, Venkataraman P, Arunakaran J. Polychlorinated biphenyls induced oxidative stress mediated neurodegeneration in hippocampus and behavioral changes of adult rats: anxiolytic-like effects of quercetin. *Toxicol Lett*. 2013;222:45–54.

Submit your next manuscript to BioMed Central and we will help you at every step:

- We accept pre-submission inquiries
- Our selector tool helps you to find the most relevant journal
- We provide round the clock customer support
- Convenient online submission
- Thorough peer review
- Inclusion in PubMed and all major indexing services
- Maximum visibility for your research

Submit your manuscript at
www.biomedcentral.com/submit

